

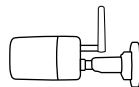
# Quick Start Guide

Apply to: B800W

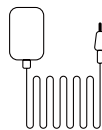
## Contents

What's in the Box .....	2
Camera Introduction .....	3
Connection Diagram .....	4
Access the NVR via Smartphone or PC .....	6
Mount Tips for the Camera .....	7
Troubleshooting .....	8
Specification .....	9
Notification of Compliance .....	9

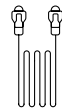
## What's in the Box



Bullet Camera



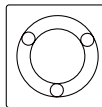
Camera Power  
Adapter



1m Ethernet  
Cable



Waterproof Lid



Mounting Hole  
Template



Surveillance  
Sticker



Pack of  
Screws

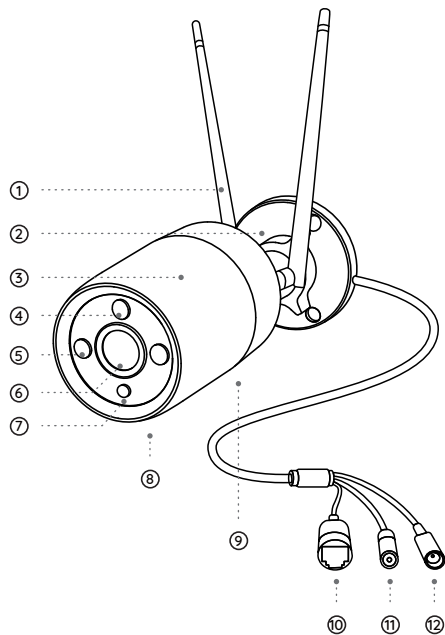


Quick Start  
Guide



Power Extension  
Cable

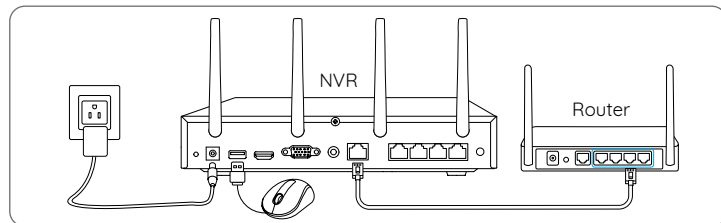
## Camera Introduction



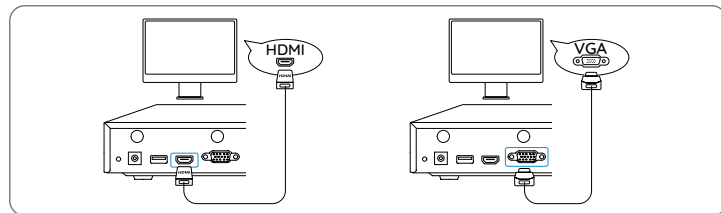
- ① Antenna
- ② Mount
- ③ Metal Aluminum Case
- ④ Spotlight
- ⑤ IR LEDs
- ⑥ High Definition Lens
- ⑦ Daylight Sensor
- ⑧ Built-in Mic
- ⑨ Speaker
- ⑩ Network Port
- ⑪ Reset Button
- ⑫ Power Port

\* Press for about 10 seconds to restore the device to factory settings.

## Connection Diagram



1. Connect the included power adapter to the NVR and a power outlet.
  2. Connect the NVR to your router with an Ethernet cable (if you hope to use it remotely).
- Next, connect the mouse to the USB port of the NVR.

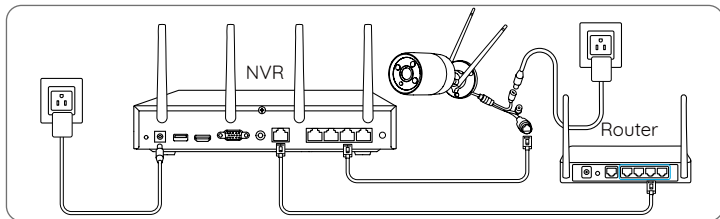


3. Connect the NVR to the monitor with a VGA or HDMI cable.

**NOTE:** There is no VGA cable and monitor included in the package.

4. Follow the steps on the monitor to complete the initial setup.

**NOTE:** In the second step, UID is disabled by default. You're recommended to enable it for remote access on smartphones or computers. Or you can set it later in "Settings > System > Info".



5. Power on your WiFi Cameras and connect them to the LAN ports (for IPC) on the NVR via Ethernet cables.

6. Click Sync WiFi Info to connect the cameras to the NVR's WiFi.



7. After the synchronization succeeded, remove the Ethernet cables and wait for a few seconds for them to be reconnected wirelessly.

8. After the wireless connection is successful, the camera can be installed at the desired location.

**NOTE:** There is no NVR included in the package.

## Access the NVR via Smartphone or PC

1. Connect the NVR to a router using the included Ethernet cable.  
2. Download and launch the Reolink App or Client and follow the instructions to access the NVR.

• On Smartphone  
Scan to download the Reolink App.

• On PC  
Download path: Go to <https://reolink.com> > Support > App & Client.



## Mount Tips for the Camera

### Installation Tips

- Do not face the camera towards any light sources.
- Do not point the camera towards a glass window. Or, it may result in poor image quality because of the window glare by infrared LEDs, ambient lights or status lights.
- Do not place the camera in a shaded area and point it towards a well-lit area. Or, it may result in poor image quality. To ensure best image quality, the lighting condition for both the camera and the capture object shall be the same.
- To ensure better image quality, it's recommended to clean the lens with a soft cloth from time to time.
- Make sure the power ports are not directly exposed to water or moisture and not blocked by dirt or other elements.
- With IP waterproof ratings, the camera can work properly under conditions like rain and snow. However, it doesn't mean the camera can work underwater.
- Do not install the camera at places where rain and snow can hit the lens directly.
- The camera may work in extreme cold conditions as low as -10°C. Because when it is powered on, the camera will produce heat. You may power on the camera indoors for a few minutes before installing it outdoors.

**NOTE:** Please install the cameras within the NVR's signal range.

## Troubleshooting

### Camera Not Displaying Images on the Monitor

#### Cause 1: Camera is not Powering on

Solutions:

- Cover the camera's IR LEDs to see if they light up.
- If you have a 12V power adapter, power up the camera with the power adapter.

#### Cause 2: Incorrect Account Name or Password

Solution:

Login to the NVR, go to Settings > Channel page and click Modify to input the correct password for the camera. If you forget your password, please reset your camera to reset the password to default (blank).

#### Cause 3: Camera is not Assigned to a Channel

Solution:

Go to Settings > Channel page, click the channel you want, and then select your camera for that channel. If all channels are already in use, please delete the offline camera from the NVR. Then the channel this camera was taken is free now.

## Cause 4: No WiFi After Removing the Ethernet Cable

Solutions:

- Connect the camera to the NVR with an Ethernet cable. Go to Network > Wi-Fi > Settings on the monitor to sync the NVR's WiFi.
- Install the camera within the NVR's signal range.
- Install antennas on the camera and the NVR.

If these won't work, please contact Reolink Support <https://support.reolink.com>

## Specification

### Camera

Operating Temperature:

-10°C to 55°C (14°F to 131°F)

Operating Humidity: 10%-90%

B800W Size:  $\Phi 67 \times 187$ mm

Weight: 485.7g, for B800W

For more Specifications, visit <https://reolink.com/>.

## Notification of Compliance

### FCC Compliance Statements

This device complies with Part 15 of the FCC Rules. Operation is subject to the following two conditions: (1) this device may not cause harmful interference, and (2) this device must accept any interference received, including interference that may cause undesired operation.

**Note:** This equipment has been tested and found to comply with the limits for a Class B digital device, pursuant to Part 15 of the FCC Rules. These limits are designed to provide reasonable protection against harmful interference in a residential installation. This equipment generates, uses and can radiate radio frequency energy and, if not installed and used in accordance with the instructions, may cause harmful interference to radio communications. However, there is no guarantee that interference will not occur in a particular installation. If this equipment does cause harmful interference to radio or television reception, which can be determined by turning the equipment off and on, the user is encouraged to try to correct the interference by one or more of the following measures:

- Reorient or relocate the receiving antenna.
- Increase the separation between the equipment and receiver.
- Connect the equipment into an outlet on a circuit different from that to which the receiver is connected.
- Consult the dealer or an experienced radio/TV technician for help.

Caution: Changes or modifications not expressly approved by the party responsible for compliance could void the user's authority to operate the equipment.

## FCC Radiation Exposure statement

This equipment complies with FCC radiation exposure limits set forth for an uncontrolled environment. This equipment should be installed and operated with minimum distance 20cm between the radiator and your body.

## ISED Compliance Statements

This device contains licence-exempt transmitter(s)/receiver(s) that comply with Innovation, Science and Economic Development Canada's licence-exempt RSS(s). Operation is subject to the following two conditions:

- (1) This device may not cause interference.
- (2) This device must accept any interference, including interference that may cause undesired operation of the device.

L' émetteur/récepteur exempt de licence contenu dans le présent appareil est conforme aux CNR d'Innovation, Sciences et Développement économique Canada applicables aux appareils radio exempts de licence.

L' exploitation est autorisée aux deux conditions suivantes :

- (1) L' appareil ne doit pas produire de brouillage;
- (2) L' appareil doit accepter tout brouillage radioélectrique subi, même si le brouillage est susceptible d'en compromettre le fonctionnement.

## ISED Radiation Exposure statement

This equipment complies with IC RSS-102 radiation exposure limits set forth for an uncontrolled environment. This equipment should be installed and operated with minimum distance 20 cm between the radiator and your body.

Cet équipement est conforme aux limites d'exposition aux radiations IC CNR-102 établies pour un environnement non contrôlé. Cet équipement doit être installé et utilisé avec une distance minimale de 20 cm entre le radiateur et votre corps. Cet émetteur ne doit pas être colocalisé ou fonctionner en conjonction avec une autre antenne ou un autre émetteur. Operation of 5150-5250 MHz is restricted to indoor use only.

Le fonctionnement de 5150-5250 MHz est limité à une utilisation en intérieur uniquement.

## Simplified EU Declaration of Conformity

Reolink declares that this device is in compliance with the essential requirements and other relevant provisions of Directive 2014/53/EU and Directive 2014/30/EU.

## WiFi Operating Frequency

OPERATING FREQUENCY :

2.4 GHz EIRP < 20dBm    5 GHz EIRP < 20dBm    5.8GHz EIRP < 14dBm



The functions of Wireless Access Systems including Radio Local Area Networks(WAS/RLANs) within the band 5150-5350 MHz for this device are restricted to indoor use only within all European

Union countries (BE/BG/CZ/DK/DE/EE/IE/EL/ES/FR/HR/ IT/CY/LV/LT/  
LU/HU/MT/NL/AT/PL/PT/RO/SI/SK/FI/SE/TR/NO/CH/IS/LI/UK(NI))

## UKCA Declaration of Conformity

Reolink declares that this product is in compliance with Electromagnetic Compatibility Regulations 2016 and Electrical Equipment Safety Regulations 2016.



## Correct Disposal of This Product

This marking indicates that this product should not be disposed with other household wastes throughout the EU. To prevent possible harm to the environment or human health from uncontrolled waste disposal, recycle it responsibly to promote the sustainable reuse of material resources. To return your used device, please use the return and collection systems or contact the retailer where the product was purchased. They can take this product for environmentally safe recycling.

## Limited Warranty

This product comes with a 2-year limited warranty that is valid only if purchased from Reolink Official Store or a Reolink authorized reseller. Learn more: <https://reolink.com/warranty-and-return/>.

## Terms and Privacy

Use of the product is subject to your agreement to the Terms of Service and Privacy Policy at [reolink.com](https://reolink.com). Keep out of reach of children.