

规格书

SPECIFICATION FOR APPROVAL

客户名称

CUSTOMER NAME: 睿联

产品名称

PRODUCT NAME: 2.4/5G 5dBi 黑色天线 SMA

客户料号



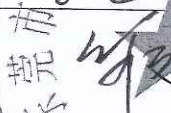
CUSTOMER P/N: 54.07.001.0097A

仁丰料号

Ren Feng P/N: U00T01S010N03637 REV: A

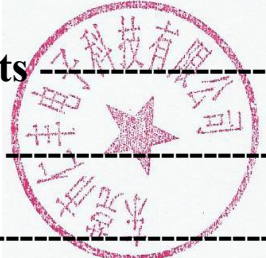
内部结构

Internal structure: PCB+弹簧

	MANUFACTURER SIGNATURE	CUSTOMER SIGNATURE
CHECKED BY:		
AUDITOR BY:		
APPROVED BY:		
DATE:	2023.07.13	

Contents

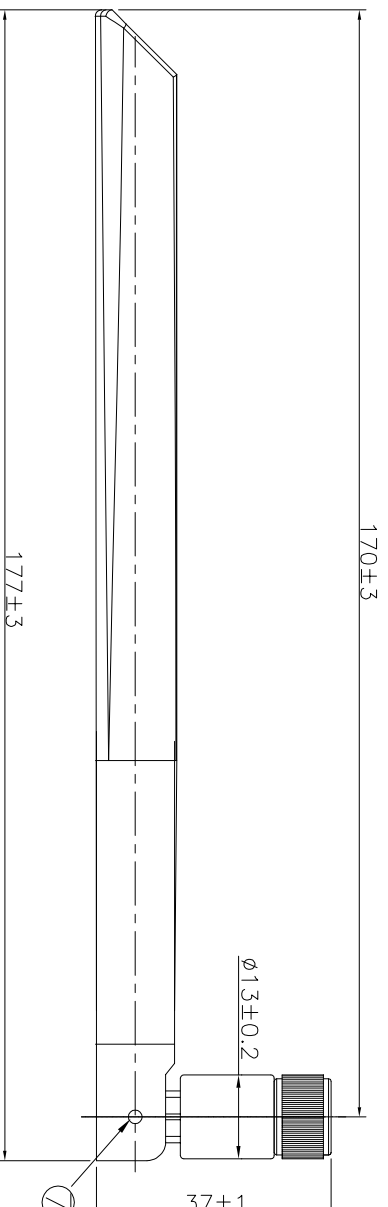
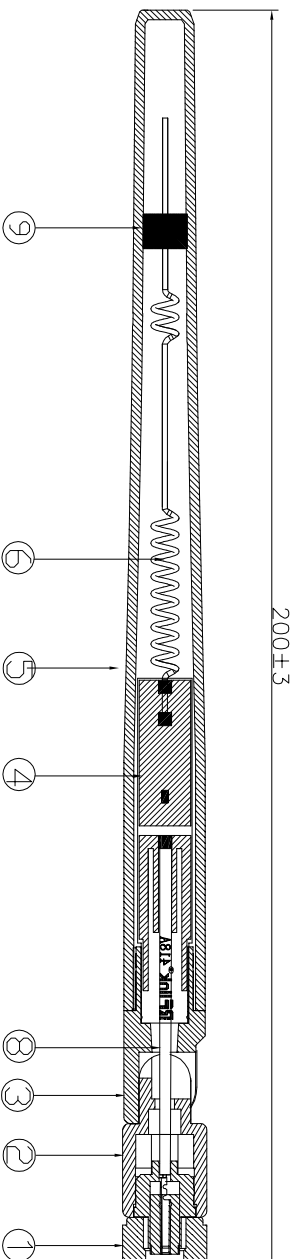
<i>Description</i>	<i>Page</i>
1、 Cover -----	
2、 Resume -----	
3、 Contents-----	
4、 Specifications sheets-----	
5、 End product chart-----	
6、 Testingreport-----	



4.Specificationsheets

Main technical specifications	
Frequency Range (MHZ)	2400-2483
	5150-5825
Impedance(Ω)	50 \pm 10
Gain(dBi)	5 \pm 0.5
ReTurnLoss(dB)	\leq -9.5
VSWR	\leq 2.0
Admitted Power	1W
Polarization	Linear, Vertical
Radiation	Omni-directional
Connector Type	SMA
Physical Properties	
Antenna Base	PP
Operating Temp	-20 $^{\circ}$ C~+60 $^{\circ}$ C
Storage Temp	-20 $^{\circ}$ C~+70 $^{\circ}$ C

REV	DATE	DESCRIPTION
A	2023-06-29	NEW ISSUE



9	foam	1	EVA,Black
8	Wire rod	1	RG178 Black
7	rivet	2	POM; Black
6	spring	1	Brass
5	Pole sleeve	1	PP; Black
4	POB	1	FR-4
3	Upper fixing	1	PC+ABS; Black
2	RF connector	1	PC+PBT; Black
1	SMA	1	SMA PLUG -PIN (F); Brass Nickel plating
NO.	DESCRIPTION	QTY	REMARK

尺寸范围 (mm)

公差 (mm)

0 < L ≤ 6 ± 0.10

6 < L ≤ 30 ± 0.10

30 < L ≤ 90 ± 0.15

90 < L ≤ 180 ± 0.20

180 < L ≤ 315 ± 0.25

315 < L ≤ 800 ± 0.35

角度 ± 0.5°

APPROVED

CHECKED

CHECKED

CHECKED

CHECKED

CHECKED

CHECKED

CUSTOMER:

PART NO :

PARTNAME : RF Antenna Assembly

R.F P/NO : U00T01S010N03637

REV UNIT SCALE SIZE SHEET

A mm 1 : 1 A4 10F1

RF link

RenFeng Electronic technology
Co., LTD.

规格 Specification:

频率 Frequency Range: 2.4~2.483GHz

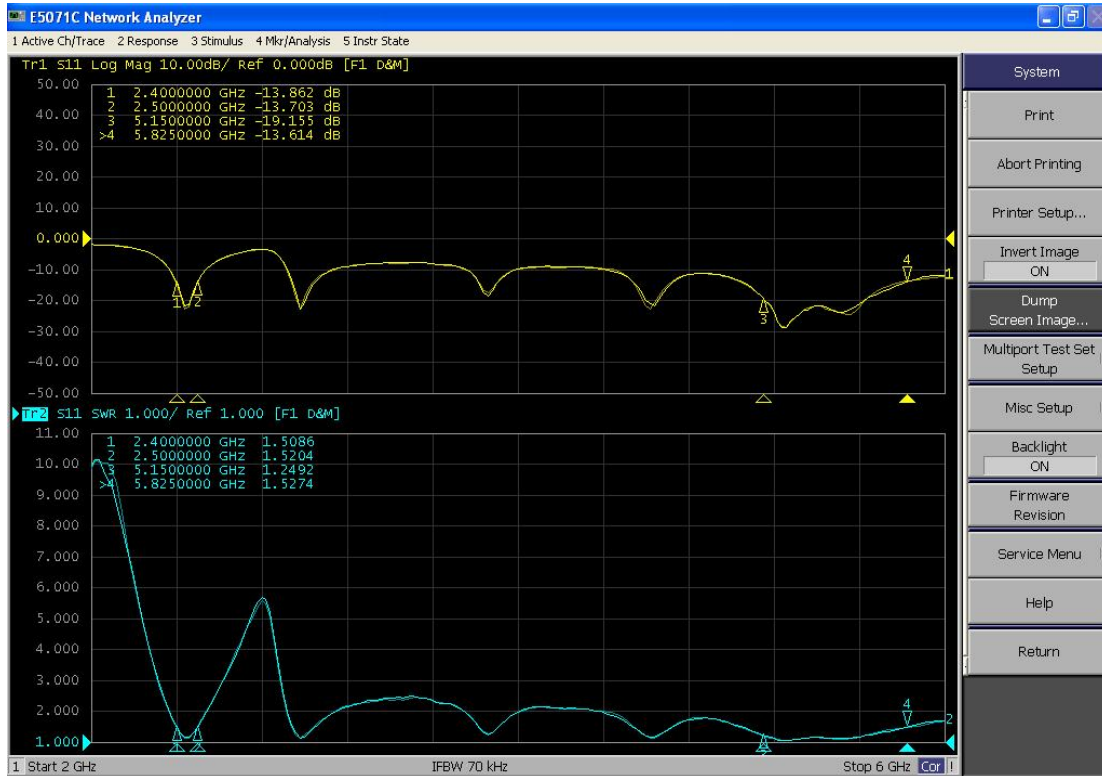
5.15~5.825GHz

回波损耗 Return loss: -9.5dB or less

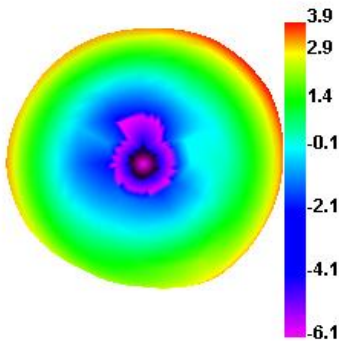
驻波比 VSWR: 2.0 max

增益 Gain (peak): 5dBi

6.1 Testing report

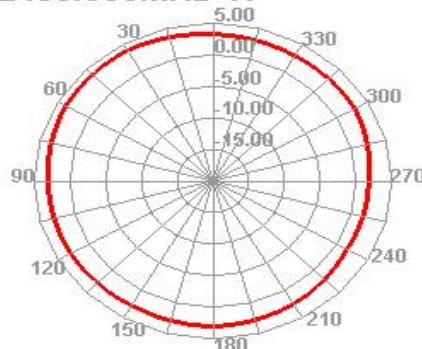


2450.000MHz

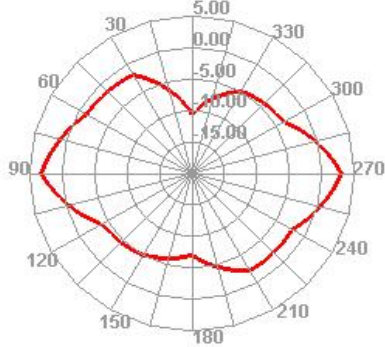


2.4G
2400MHz

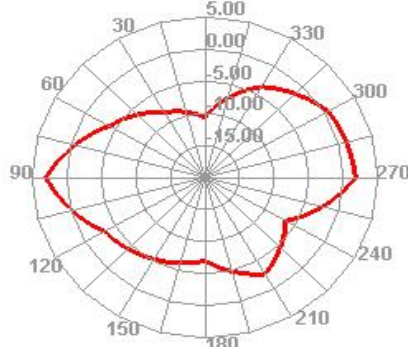
2450.000MHz H



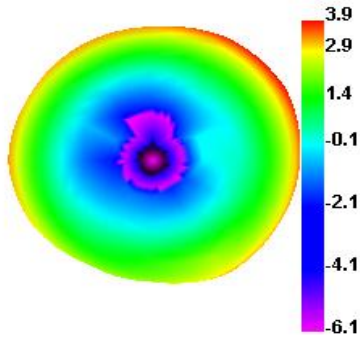
2450.000MHz E1



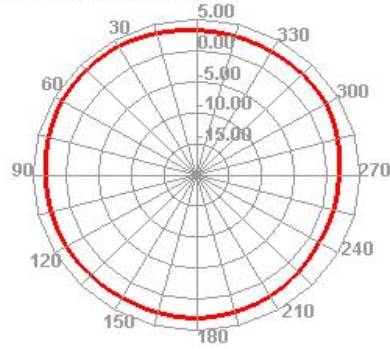
2450.000MHz E2



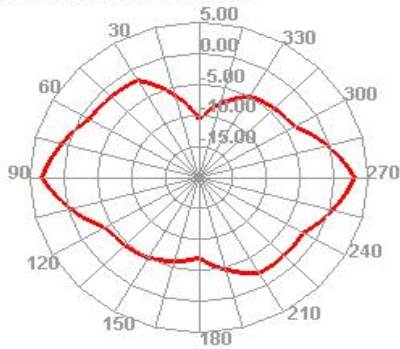
2450.000MHz



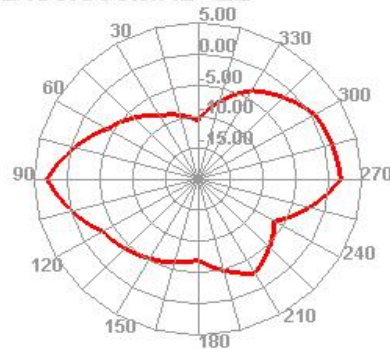
2450.000MHz H



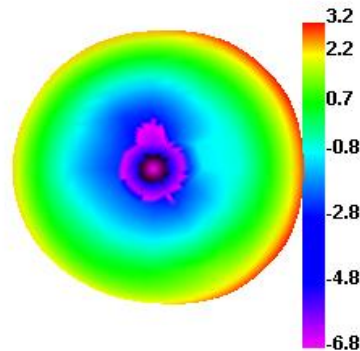
2450.000MHz E1



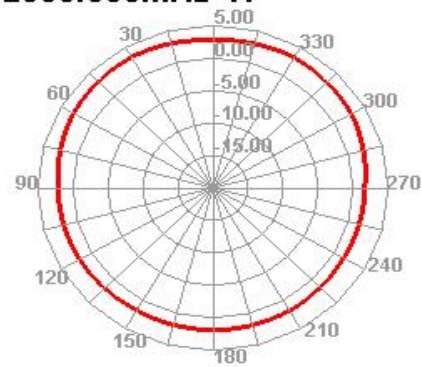
2450.000MHz E2



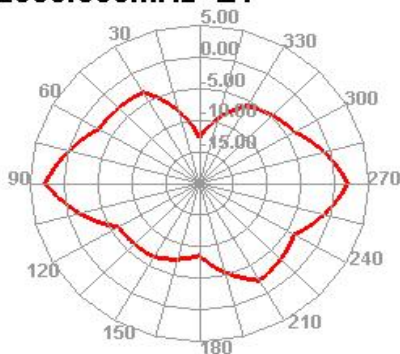
2500.000MHz



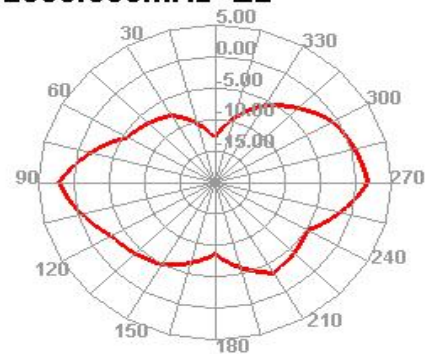
2500.000MHz H



2500.000MHz E1

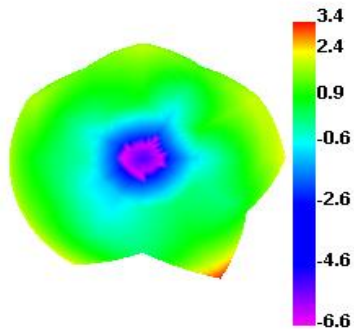


2500.000MHz E2

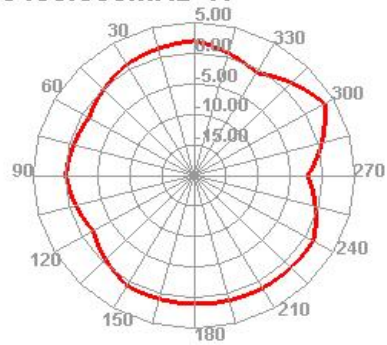


5G
5500MHz

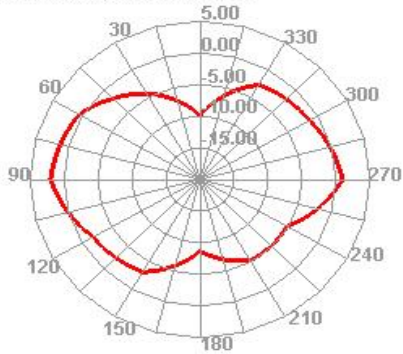
5400.000MHz



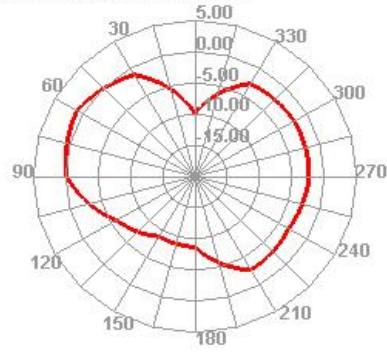
5400.000MHz H



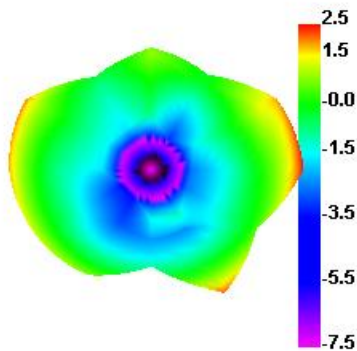
5400.000MHz E1



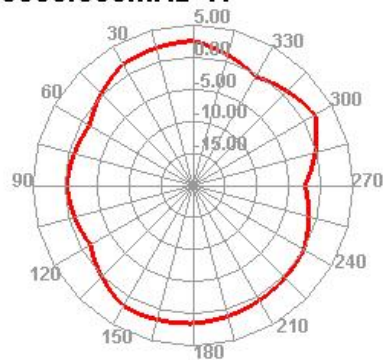
5400.000MHz E2



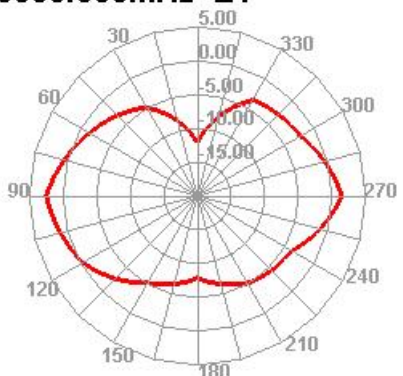
5500.000MHz



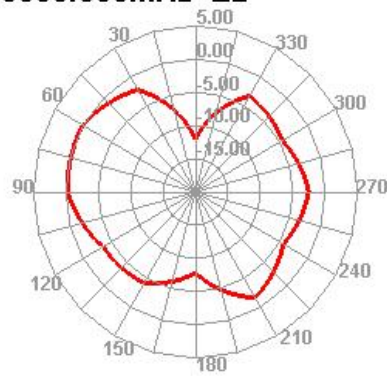
5500.000MHz H



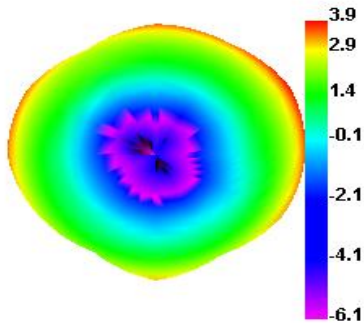
5500.000MHz E1



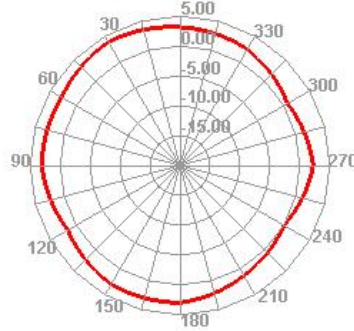
5500.000MHz E2



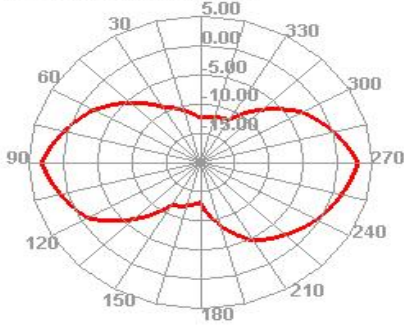
5850.000MHz



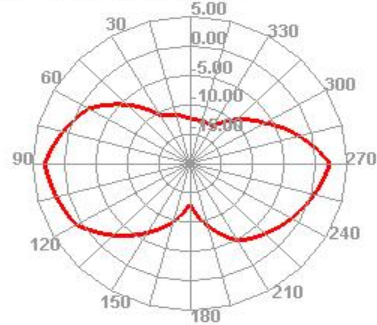
5850.000MHz H



5850.000MHz E1



5850.000MHz E2



Frequency (MHz)	ANT	
	Efficiency (%)	Peak Gain (dBi)
2400	77.21	3.43
2450	79.21	3.95
2500	82.33	3.24
5150	82.65	3.46
5500	83.15	4.27
5850	77.52	3.93