

样品承认书

Confirmation of products

客户名称 Customer	深圳市睿联技术股份有限公司				
项目名称 Project Name	B23	版本 Version	A.2	日期 Date	2023-08-11
项目料号 Project NO.	03.09.03.001	客户料号 Customer NO.	54.07.001.0090A		
频段 Frequency Range	2400~2500MHz 5100~5800MHz	备注 Notes	WIFI		
设计 Designed By					
审核 Approved By					
客户确认 Clients' Approval					

公司名称：深圳市林荣科技有限公司

Designer: SHENZHEN LINRONG TECHNOLOGY CO., LTD

地址：深圳市龙华区大浪街道华荣路联建工业园 1 栋 3 楼

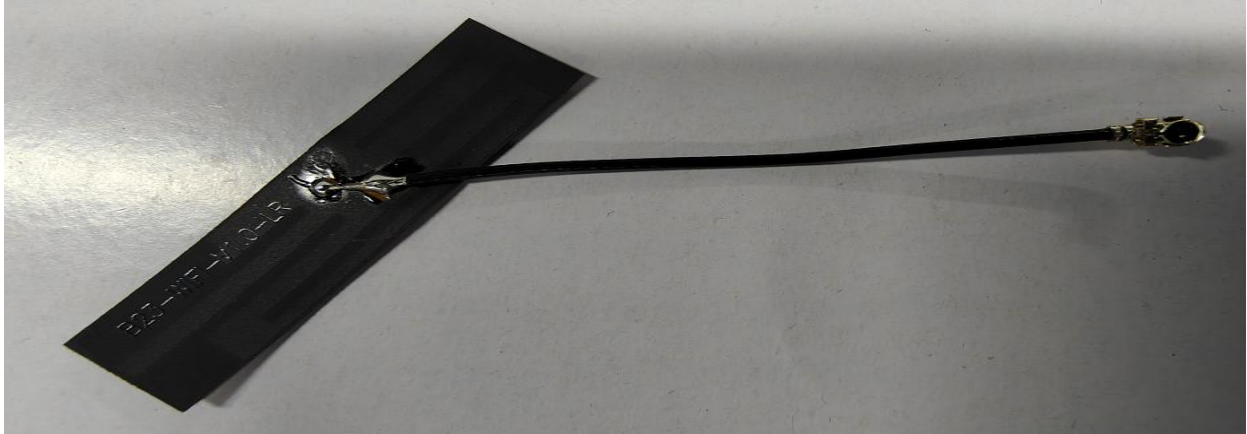
ADD: Floor 3, building 1, LianJian Industrial Park, Huarong Road, Dalang street, Longhua District, Shenzhen

Index

1. Specifications	3
2. VSWR Testing	3
2-1 Testing connection	3
2-2 VSWR	4
2-3 Testing data	4
3.Power、 Sensitivity Testing	4
3-1 Testing field	4
3-2 Testing results	5
3.3 Active testing	6
4、 Environmental treatment	6
5. Mechanical Dimension Drawing	7
6. Mechanical Dimension Testing report	8
7、 Packaging standard	9

1、 Specification

This report mainly provides the testing conditions of various electric and structural performance parameters for cell phone antenna ----B23 Picture 1 shows the antenna designed by LR.



2、 VSWR Testing

2.1 Testing connection

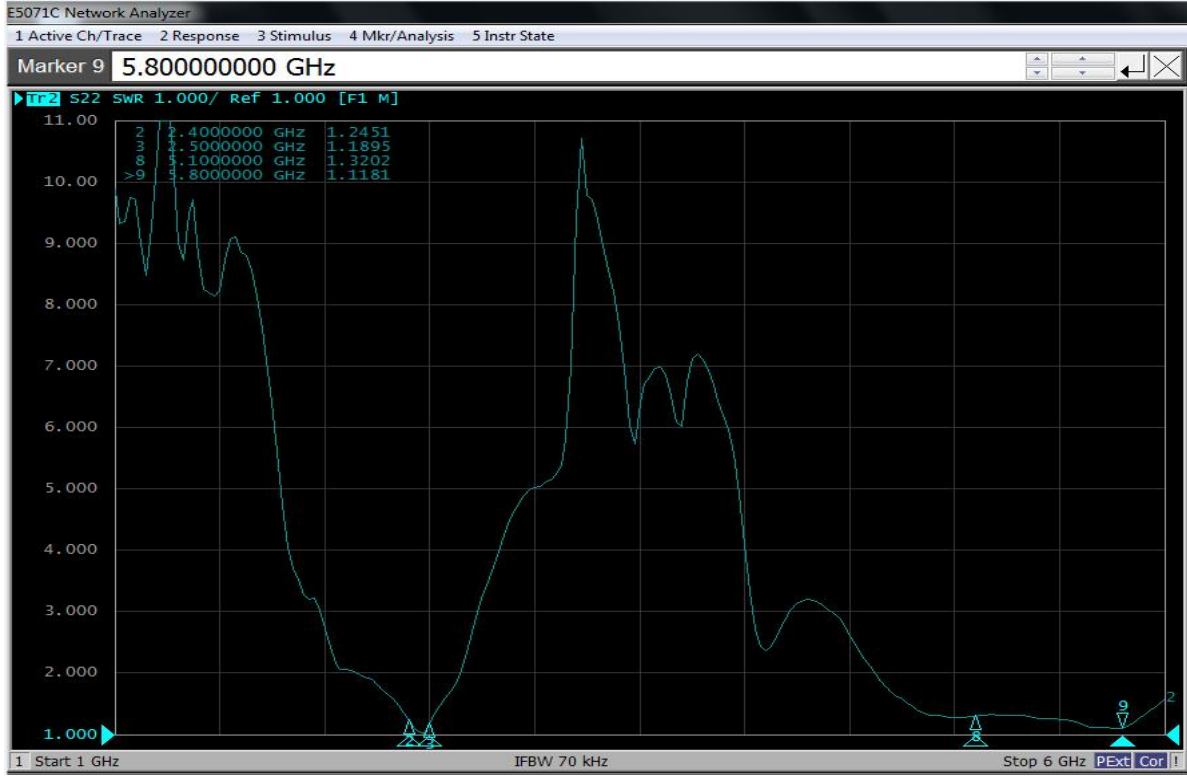
The **Return Loss** testing devices are connected in sequence: Agilent5071C Network Analyzer →Testing Cable → Customer-providing Devices.

2.2 VSWR

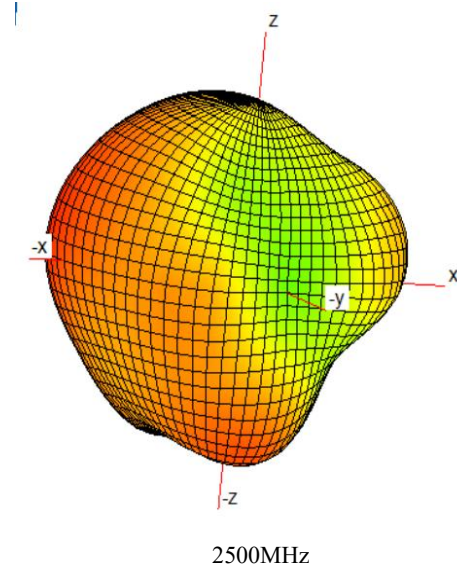
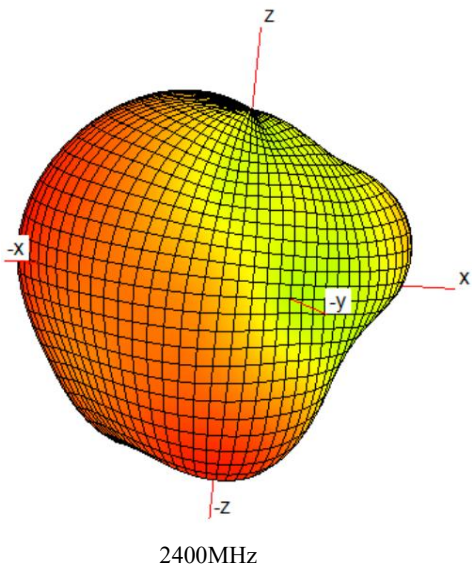
The following table expresses the VSWR value of antenna's two edges of its frequency range. With regard to the relevant diagram of VSWR

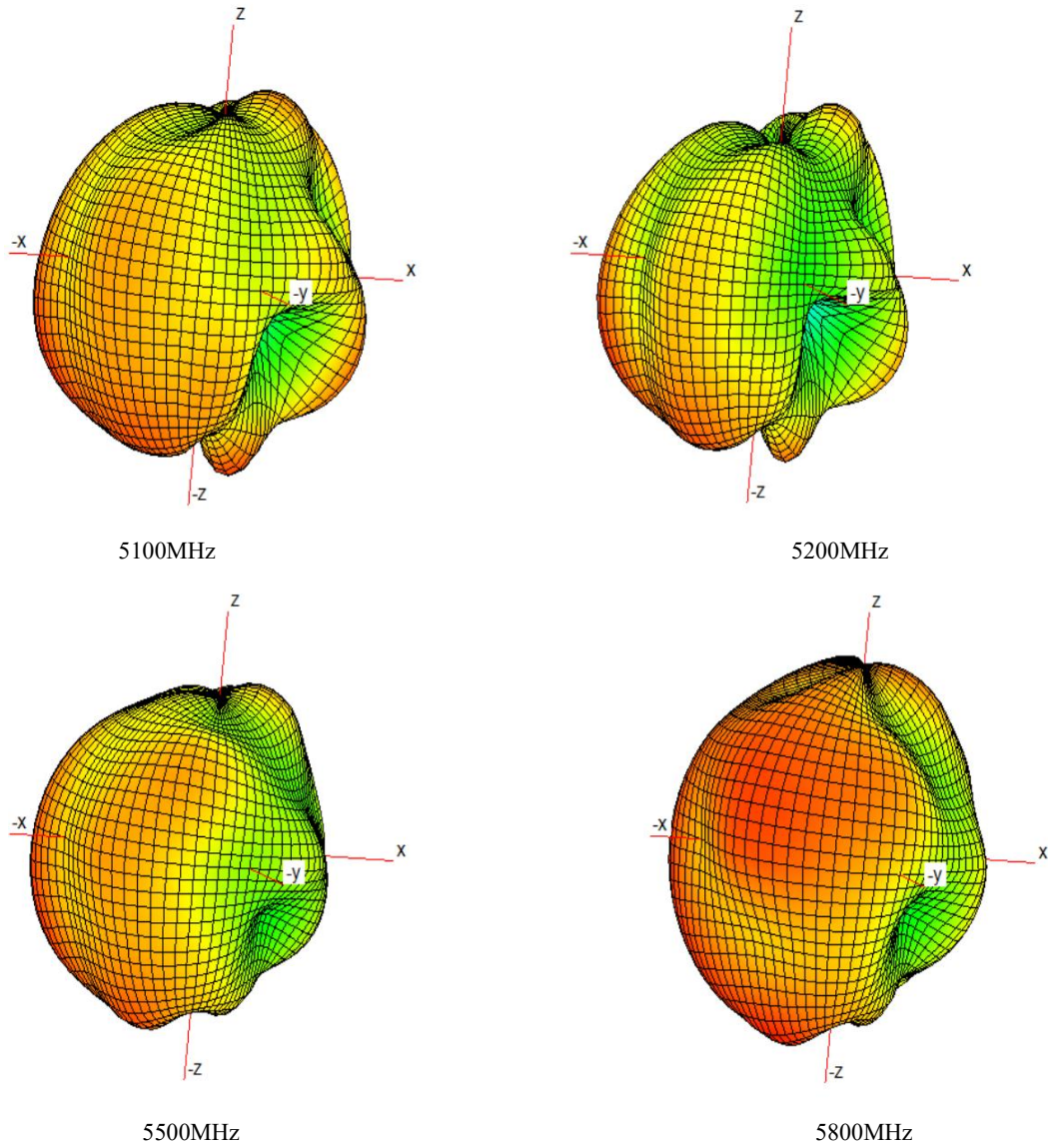
B23 WIFI VSWR					
Frequency (MHz)	2400	2450	2500	5100	5800
VSWR	1.21	1.13	1.24	1.32	1.11

2.3 Testing data

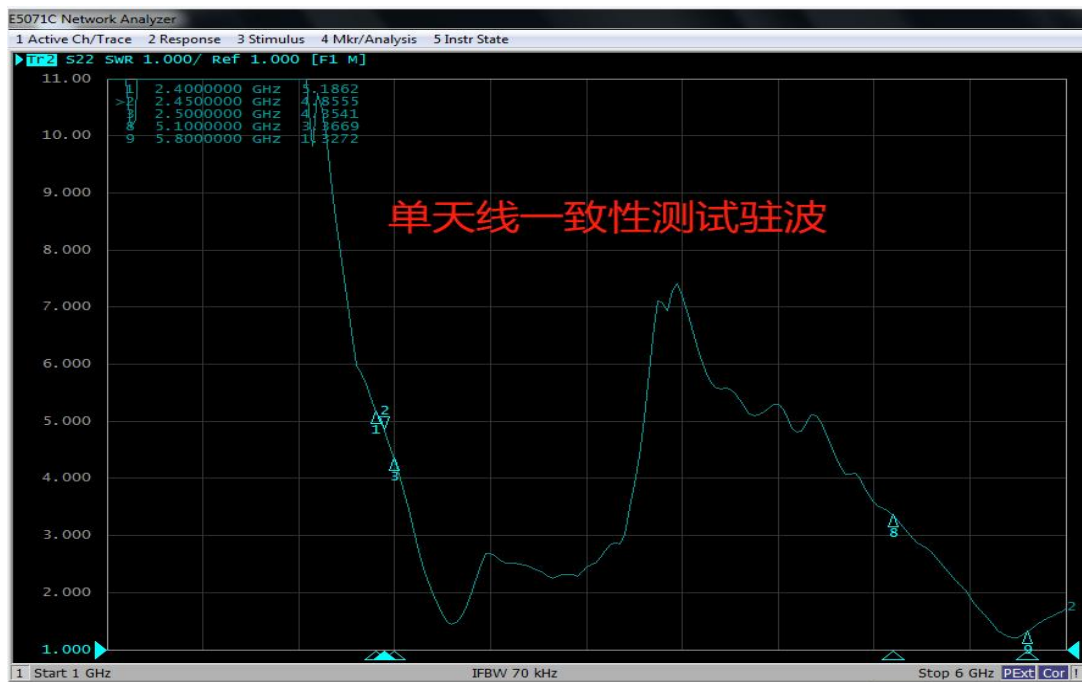


2.4+5.8G WIFI antenna VSWR





2.4 Single antenna test VSWR



3、 Power、 Sensitivity Testing

3.1 Testing field

LR Microwave Anechoic Chamber : testing frequency ranges from 400MHz to 6GHz and the 40cm diameter spherical quiet zone, the chamber provides less than -90dB reflectivity from 400MHz—6GHz.

3.2 Testing results

The following table indicates the testing results related to Power and Sensitivity in Microwave Anechoic Chamber, concerning the relative diagram.

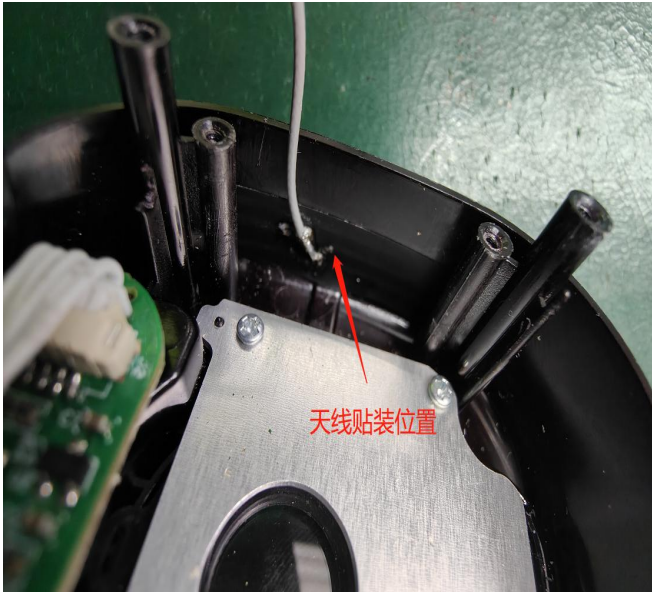
3.3 Active testing.

B23 Antenna efficiency:

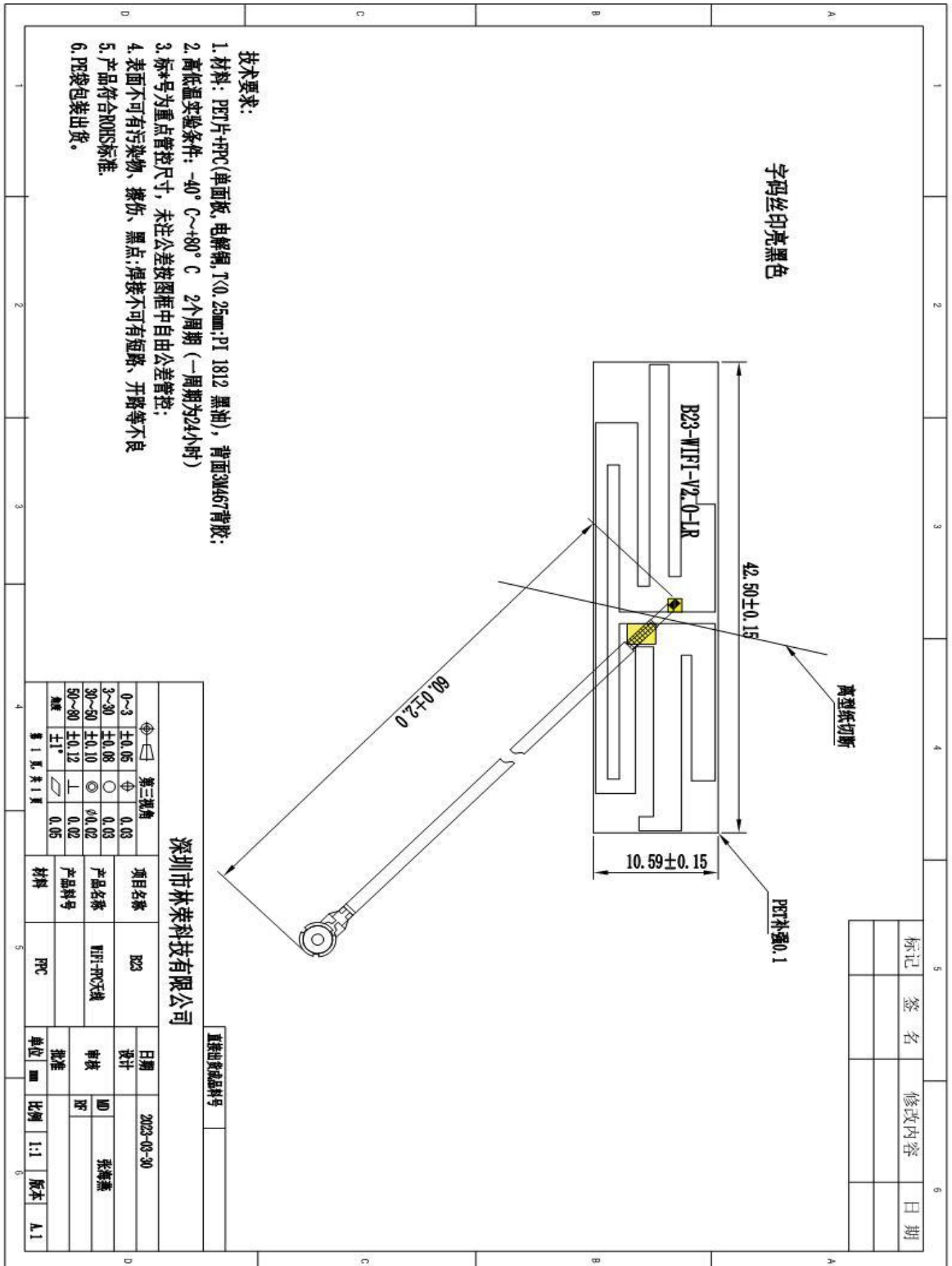
Freq	Gain	Efficiency	Freq	Gain	Efficiency
2400	2.8	59	5360	4.0	61
2410	2.8	60	5380	4.0	62
2420	2.9	61	5400	3.8	61
2430	2.9	61	5420	3.7	61
2440	3.0	62	5440	3.5	59
2450	3.0	63	5460	3.3	59
2460	2.9	63	5480	3.2	58
2470	3.0	64	5500	3.0	58
2480	3.2	65	5520	2.7	56
2490	3.4	68	5540	2.6	56
2500	3.5	69	5560	2.6	59
5100	4.4	59	5580	2.4	59
5120	4.5	60	5600	2.4	59
5140	4.6	61	5620	2.2	56
5160	4.6	62	5640	2.2	54
5180	4.4	61	5660	2.1	52
5200	4.5	63	5680	2.3	54
5220	4.5	64	5700	2.2	54
5240	4.4	62	5720	2.1	52
5260	4.4	63	5740	2.1	50
5280	4.4	63	5760	2.2	51
5300	4.3	62	5780	2.2	51
5320	4.1	59	5800	2.2	50
5340	4.2	62			

4、 Environmental treatment

Antenna mounting diagram

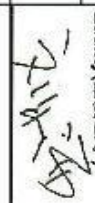


5、Mechanical Dimension Drawing



6. Mechanical Dimension Testing report

全尺寸测量报告

Vendor(供应商)		材质名称		PPC		Part NO(料号)		03.09.03.001		Tool Number (模号)		Car. Number(次数)		Unit(单位)		Quality(品质签字)								
林荣科技		/		/		Part Name (零件名称)		WiFi天线		/		Rev(版本)		A.1		<input checked="" type="checkbox"/> MILLIMETERS <input type="checkbox"/> INCHES								
日期		2023-3-30		MEASURED DIMENSION(实测尺寸)					% TOLERANCE USED (公差使用百分比)					DISPOSITION					ACCEPTABLE VARIANCE					
#	DIMENSION	DRAWING ZONE	+TOL.	-TOL.	NOTE	SAMPLE 1	SAMPLE 2	SAMPLE 3	SAMPLE 4	SAMPLE 5	UPPER	LOWER	0%-25%	25%-50%	50%-75%	75%-100%	100%+	Re-Measure	Accept	Fix Tool	Accept With Variance	DIMENSION	+TOL.	-TOL.
1	60.00		2.00	(2.00)		61.00	60.00	59.00	60.00	61.00	50%	-50%	x									60.00	61.00	59.00
2	42.50		0.15	(0.15)		42.55	42.53	42.50	42.52	42.52	33%	0%	x	x								42.50	42.55	42.50
3	10.59		0.15	(0.15)		10.60	10.61	10.60	10.58	10.62	20%	-7%	x									10.59	10.62	10.58
4	以下空白																							
6																								
7																								
8																								
9																								
10																								
11																								
12																								
13																								

备注：除了上述标注的填写内容外，须输入的内容：
 1. DIMENSION, +TOL., -TOL., SAMPLE1, SAMPLE2, SAMPLE3
 2. 注意1中描述的内容输入时，请：
 a. 在%TOLERANCEUSED(公差使用百分比)中式选择UPPER还是LOWER>100% 须：
 (1) 检查输入数据是否输入错误；(2) 测量数据是否操作有误或是仪器测量不准确；(3) 测量时间是否不适宜；(4) 排除了(1)(2)(3)外，仍然>100%，请设计师对每个尺寸的后面作出选择即从“Re-measure, Accept, Re Tool, Accept Variance”中之一，若是选Accept with variance, 必须完成后面的Dimension, +TOL, -TOL;
 b. DIMENSION栏中的即尺寸前一栏中的DIM #必须与图面上的一致；同时注意，在作Cpk的尺寸的编号与FAT全尺寸测量报告中的尺寸的编号必须是相同的，且Cpk尺寸必须被用符号标注，此标注号必须表示的意思是该尺寸为重点管控尺寸，要做Cpk!
 c. 测量工具代号Measure No.: A=callipers (0.00) B=micrometer (0.000) C=Pin Gauge (0.000) D=High Gauge (0.000) E=CMM (0.000) F=Plug Gauge (0.00) G=R Gauge (0.0) I=Deep Gauge (0.000)

7. Packaging standard

包装说明：具体包装数量以实物为准，图片只显示包装的方式，并非此项目实物。

Packaging Description: the specific packaging quantity is subject to the physical object. The picture only shows the way of packaging, not the physical object of the project



天线用 PE 袋包装

The top cover board, with PE film packaging



防潮防水 PET 袋封装，放于纸箱或胶筐内

Moistureproof waterproof PET bag packaging,
Put in the cartons



纸箱用胶带封口

Carton sealing with duct tape



包装箱整箱外观 ()

Cases appearance