

Argus PT Lite  
**Quick Start Guide**

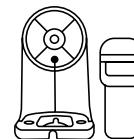
## Content

What's in the Box	2
Camera Introduction	3
Set up the Camera	4
Charge the Camera	6
Install the Camera	7
Safety Instructions of Battery Usage	12
Troubleshooting	13
Specification	14
Notification of Compliance	14

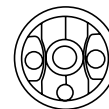
## What's in the Box



Camera



Camera Bracket



Mount Base



Type-C Cable



Antenna



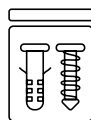
Reset Needle



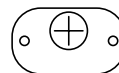
Quick Start Guide



Surveillance Sign



Pack of Screws

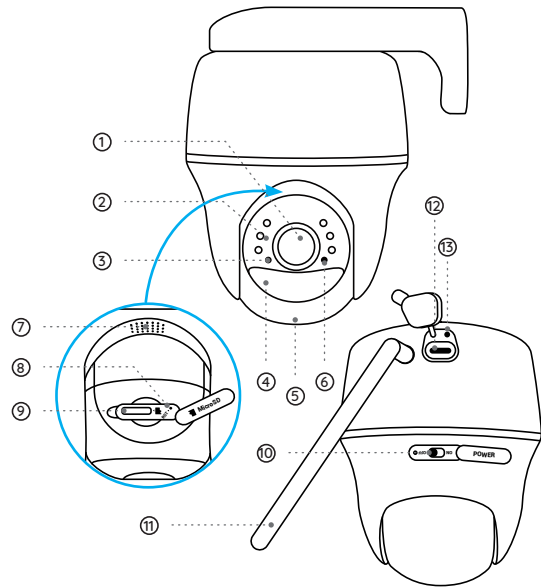


Mounting Template



Hex Key

## Camera Introduction



- ① Lens
- ② 6 IR LEDs
- ③ Daylight Sensor
- ④ Built-in PIR Sensor
- ⑤ Built-in Mic
- ⑥ Status LED
- ⑦ Speaker
- ⑧ Reset Hole  
\* Press for more than five seconds to restore the device to default settings.
- ⑨ Micro SD Card Slot  
\* Rotate the camera's lens to find the reset hole and the SD card slot.
- ⑩ Power Switch
- ⑪ Antenna
- ⑫ Charging Port
- ⑬ Battery Status LED

### Different states of the status LED:

- Red Light: WiFi connection failed
- Blue Light: WiFi connection succeeded

- Blinking: Standby status
- On: Working status

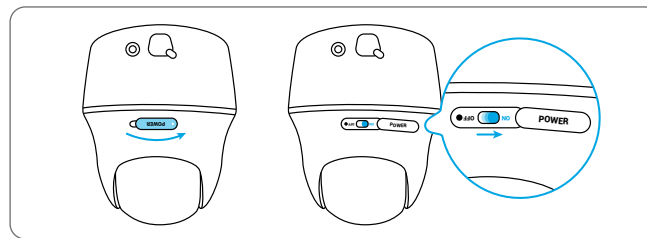
## Set up the Camera

### Set up the Camera Using a Smartphone

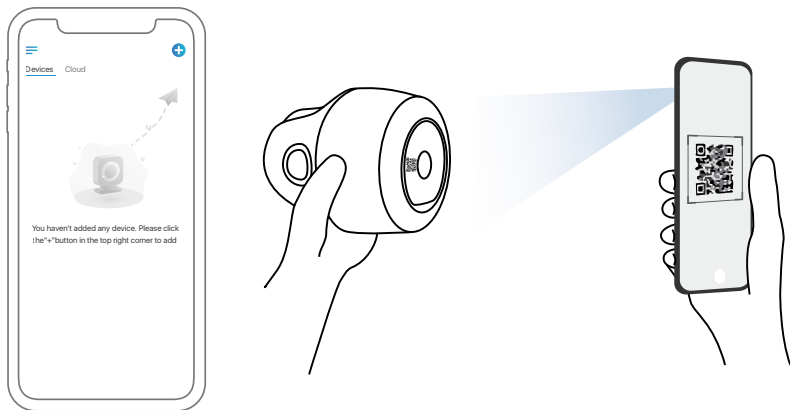
Step 1 Scan to download the Reolink App from the App Store or Google Play store.



Step 2 Turn on the power switch to power on the camera.



Step 3 Launch the Reolink App, click the “+” button in the top right corner to add the camera. Scan the QR code on the device and follow the onscreen instructions to finish initial setup.



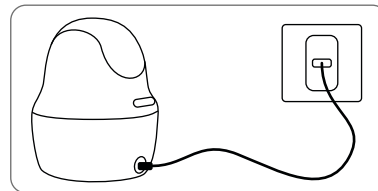
### Set up the Camera on PC (Optional)

Step 1 Download and install the Reolink Client: Go to <https://reolink.com> > Support > App&Client.

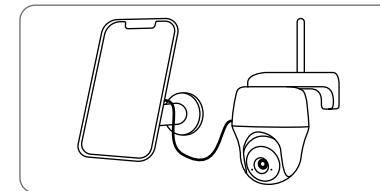
Step 2 Launch the Reolink Client, click the “+” button, input the UID code of the camera to add it and follow the onscreen instructions to finish initial setup.

## Charge the Camera

It's recommended to fully charge the battery before mounting the camera.



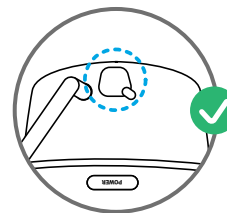
Charge the battery with a power adapter. (not included)



Charge the battery with the Reolink Solar Panel (Not included if you only purchase the camera).

Charging Indicator:

- Orange LED: Charging
- Green LED: Fully charged



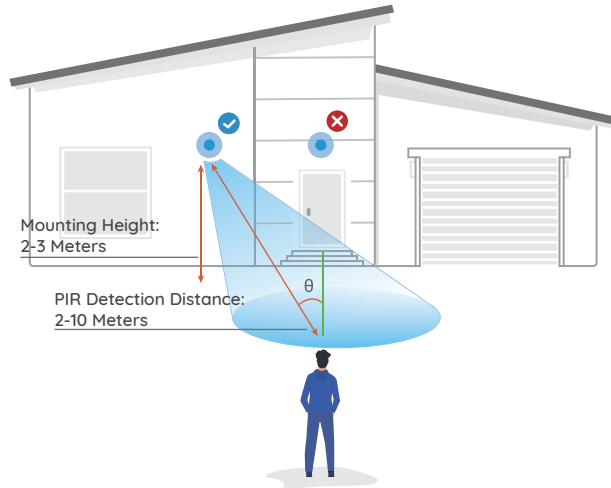
For better weatherproof performance, please always cover the charging port with the rubber plug after charging the battery.

## Install the Camera

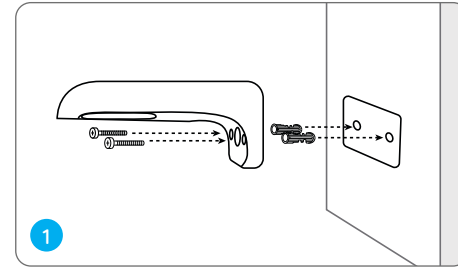
### Notes on Camera Installation Position

- The camera MUST be installed upside down for better waterproof performance and better PIR motion sensor's efficiency.
- Install the camera 2-3 meters (7-10 ft) above the ground. This height maximizes the detection range of the PIR motion sensor.
- For better motion detection performance, please install the camera angularly.

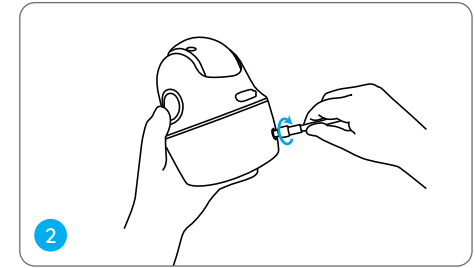
**NOTE:** If a moving object approaches the PIR sensor vertically, the camera may fail to detect motion.



### Mount the Camera

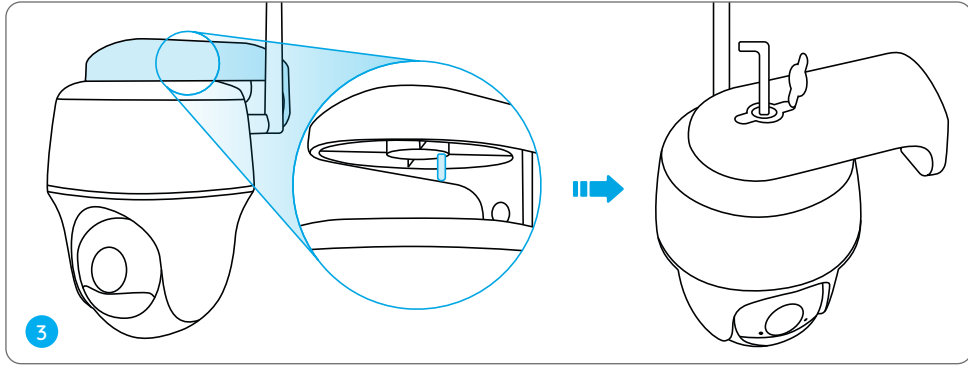


Drill holes in accordance with the mounting hole template and screw the camera bracket to the wall.



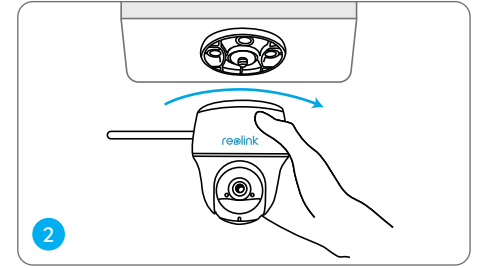
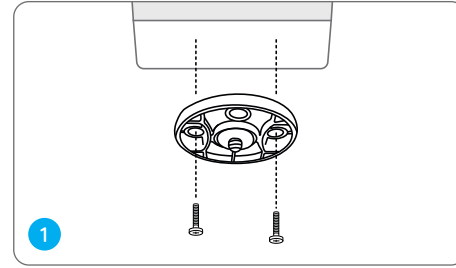
Install the antenna to the camera.

**NOTE:** Use the drywall anchors included in the package if needed.



Align the white hole on the camera top with the white hollow screw on the bracket. Use a wrench and a hex head screw provided to secure the camera into place. Then cover the rubber plug.

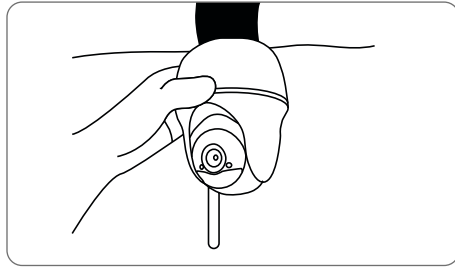
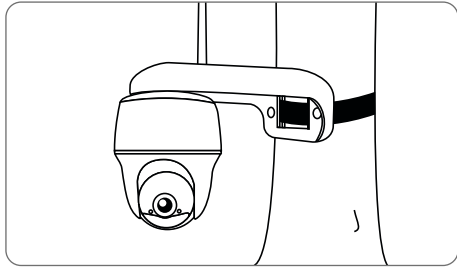
### Mount the Camera to Ceiling



Install the mount base to the ceiling. Align the camera with the mount base and turn the camera unit clockwise to lock it in position.

## Install the Camera with Loop Strap

You are allowed to strap the camera to a tree with both the security mount and ceiling bracket. Thread the provided strap to the plate and fasten it to a tree. Next, attach the camera to the plate and you are good to go.



## Safety Instructions of Battery Usage

The camera is not designed for running 24/7 at full capacity or around-the-clock live streaming. It's designed to record motion events and to live view remotely only when you need it. Learn useful tips on how to extend the battery life in this post: <https://support.reolink.com/hc/en-us/articles/360006991893>

1. Do not remove a built-in battery from the camera.
2. Charge the battery with a standard and high-quality DC 5V battery charger or Reolink solar panel. It's not compatible with solar panels from any other brands.
3. Charge the battery only if in temperatures between 0°C and 45°C. The battery is intended for use only in temperatures between -10°C and 55°C.
4. Keep the charging port dry, clean and free of any debris. Cover it with the rubber plug after the battery is fully charged.
5. Do not charge, use or store the battery next to areas that may become hot. Examples include, but are not limited to, on or near a space heater, cooking surface, cooking appliance, iron, radiator, or fireplace.
6. Do not use the battery if its case appears damaged, swollen, or compromised. Examples include, but are not limited to, leaking, odors, dents, corrosion, rust, cracks, swelling, melting, and scratches.
7. Always follow the local waste and recycling laws to dispose of used batteries.

## Troubleshooting

### Camera is Not Powering On

If your camera is not powering on, please try the following solutions:

- Make sure the power switch is turned on.
- Charge the battery with a DC 5V/2A power adapter. When the green light is on, the battery is fully charged

If these won't work, contact Reolink Support.

### Failed to Scan QR Code on the Phone

If you cannot scan the QR code on your phone, please try the following solutions:

- Remove the protective film from the camera lens.
- Wipe the camera lens with a dry paper/towel/tissue.
- Vary the distance between your camera and the mobile phone so that the camera can focus better.

- Try to scan the QR code under sufficient lighting.

If these won't work, contact Reolink Support.

## Specification

Operating Temperature:  
-10°C to 55°C (14°F to 131°F)  
Dimensions: 98 x 122mm  
Weight: 472g

For more specifications, visit the Reolink official website.

## Notification of Compliance

### CE Declaration of Conformity

Reolink declares that this device is in compliance with the essential requirements and other relevant provisions of Directive 2014/53/EU and Directive 2014/30/EU.

### UKCA Declaration of Conformity

Reolink declares that this product is in compliance with Radio Equipment Regulations 2017 and Electromagnetic Compatibility Regulations 2016.

### FCC Compliance Statements

This device complies with Part 15 of the FCC Rules. Operation is subject to the following two conditions: (1) this device may not cause harmful interference, and (2) this device must accept any interference received, including interference that may cause undesired operation.

Note: This equipment has been tested and found to comply with the limits for a Class B digital device, pursuant to Part 15 of the FCC Rules. These limits are designed to provide reasonable protection against harmful interference in a residential installation. This equipment generates, uses and can radiate radio frequency energy and, if not installed and used in accordance with the instructions, may cause harmful interference to radio communications. However, there is no guarantee that interference will not occur

in a particular installation. If this equipment does cause harmful interference to radio or television reception, which can be determined by turning the equipment off and on, the user is encouraged to try to correct the interference by one or more of the following measures:

- Reorient or relocate the receiving antenna.
- Increase the separation between the equipment and receiver.
- Connect the equipment into an outlet on a circuit different from that to which the receiver is connected.
- Consult the dealer or an experienced radio/TV technician for help.

Caution: Changes or modifications not expressly approved by the party responsible for compliance could void the user's authority to operate the equipment.



## FCC Radiation Exposure statement

This equipment complies with FCC radiation exposure limits set forth for an uncontrolled environment. This equipment should be installed and operated with minimum distance 20cm between the radiator and your body.

## ISED Compliance Statements

This device contains licence-exempt transmitter(s)/receiver(s) that comply with Innovation, Science and Economic Development Canada's licence-exempt RSS(s). Operation is subject to the following two conditions:

- (1) This device may not cause interference.
  - (2) This device must accept any interference, including interference that may cause undesired operation of the device.
- L' émetteur/récepteur exempt de licence contenu dans le présent appareil est conforme aux CNR d'Innovation, Sciences et Développement économique Canada applicables aux appareils radio exempts de licence. L' exploitation est autorisée aux deux conditions suivantes :
- (1) L' appareil ne doit pas produire de brouillage;

(2) L' appareil doit accepter tout brouillage radioélectrique subi, même si le brouillage est susceptible d'en compromettre le fonctionnement.

## ISED Radiation Exposure statement

This equipment complies with IC RSS-102 radiation exposure limits set forth for an uncontrolled environment. This equipment should be installed and operated with minimum distance 20 cm between the radiator and your body.

Cet équipement est conforme aux limites d'exposition aux radiations IC CNR-102 établies pour un environnement non contrôlé. Cet équipement doit être installé et utilisé avec une distance minimale de 20 cm entre le radiateur et votre corps. Cet émetteur ne doit pas être colocalisé ou fonctionner en conjonction avec



## Correct Disposal of This Product

This marking indicates that this product should not be disposed with other household wastes throughout the EU. To prevent possible harm to the environment or human health from uncontrolled waste disposal, recycle it responsibly to promote the sustainable reuse of material resources. To return your used device, please use the return and collection systems or contact the retailer where the product was purchased. They can take this product for environmentally safe recycling.

## Limited Warranty

This product comes with a 2-year limited warranty that is valid only if purchased from Reolink Official Store or a Reolink authorized reseller. Learn more: <https://reolink.com/warranty-and-return/>.

## Terms and Privacy

Use of the product is subject to your agreement to the Terms of Service and Privacy Policy at [reolink.com](https://reolink.com). Keep out of reach of children.

## Technical Support

If you need any technical help, please visit our official support site and contact our support team before returning the products, <https://support.reolink.com>.