

Argus PT Ultra
Quick Start Guide

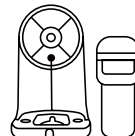
Content

What's in the Box	2
Camera Introduction	3
Set up the Camera	4
Charge the Camera	6
Install the Camera	7
Safety Instructions of Battery Usage	12
Troubleshooting	13
Specification	14
Notification of Compliance	14

What's in the Box



Camera



Camera Bracket



Mount Base



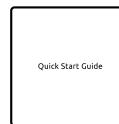
Type-C Cable



Antenna



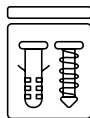
Reset Needle



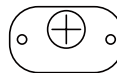
Quick Start Guide



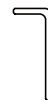
Surveillance Sign



Pack of Screws

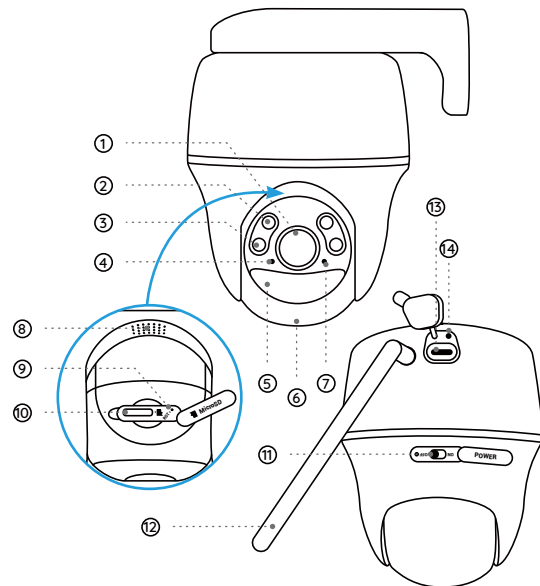


Mounting Template



Hex Key

Camera Introduction



- ① Lens
- ② IR LEDs
- ③ Spotlight
- ④ Daylight Sensor
- ⑤ Built-in PIR Sensor
- ⑥ Built-in Mic
- ⑦ Status LED
- ⑧ Speaker
- ⑨ Reset Hole
* Press for more than five seconds to restore the device to default settings.
- ⑩ Micro SD Card Slot
* Rotate the camera's lens to find the reset hole and the SD card slot.
- ⑪ Power Switch
- ⑫ Antenna
- ⑬ Charging Port
- ⑭ Battery Status LED

Different states of the status LED:

- Red Light: WiFi connection failed
- Blue Light: WiFi connection succeeded

- Blinking: Standby status
- On: Working status

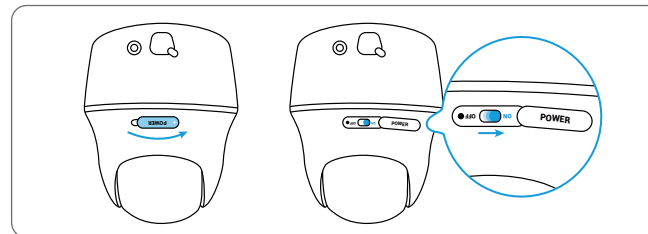
Set up the Camera

Set up the Camera Using a Smartphone

Step 1 Scan to download the Reolink App from the App Store or Google Play store.

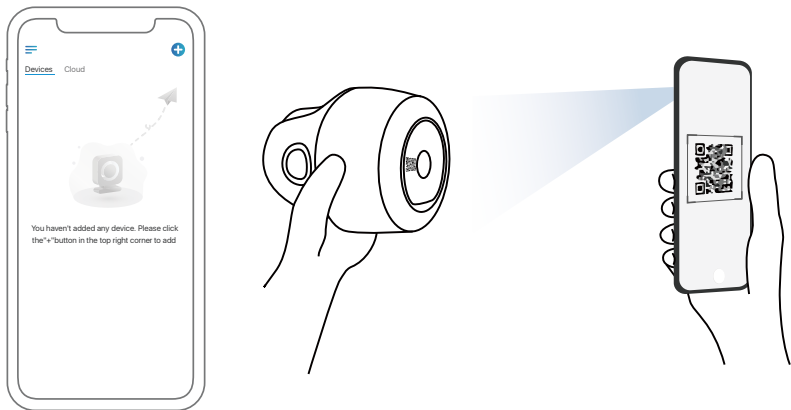


Step 2 Turn on the power switch to power on the camera.



Step 3 Launch the Reolink App, click the “+” button in the top right corner to add the camera. Scan the QR code on the device and follow the onscreen instructions to finish initial setup.

NOTE: This device supports 2.4 GHz and 5 GHz Wi-Fi networks. It is recommended to connect the device to 5 GHz Wi-Fi for a better network experience.



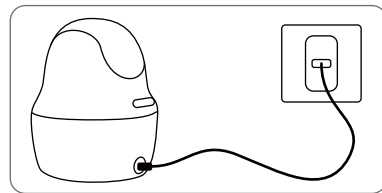
Set up the Camera on PC (Optional)

Step 1 Download and install the Reolink Client: Go to <https://reolink.com> > Support > App&Client.

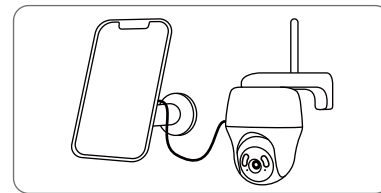
Step 2 Launch the Reolink Client, click the “+” button, input the UID code of the camera to add it and follow the onscreen instructions to finish initial setup.

Charge the Camera

It's recommend to fully charge the battery before mounting the camera.



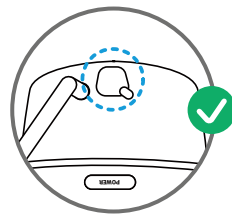
Charge the battery with a power adapter. (not included)



Charge the battery with the Reolink Solar Panel (Not included if you only purchase the camera).

Charging Indicator:

- Orange LED: Charging
- Green LED: Fully charged



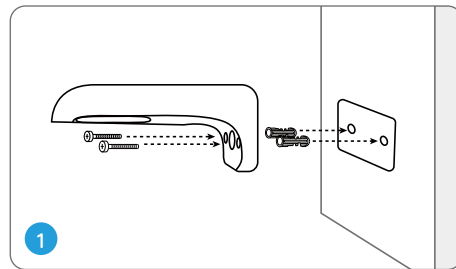
For better weatherproof performance, please always cover the charging port with the rubber plug after charging the battery.

Install the Camera

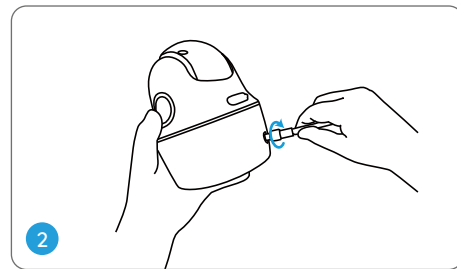
- Install the camera 2-3 meters (7-10 ft) above the ground. This height maximizes the detection range of the PIR motion sensor.
- For better motion detection performance, please install the camera angularly.

NOTE: If a moving object approaches the PIR sensor vertically, the camera may fail to detect motion.

Mount the Camera

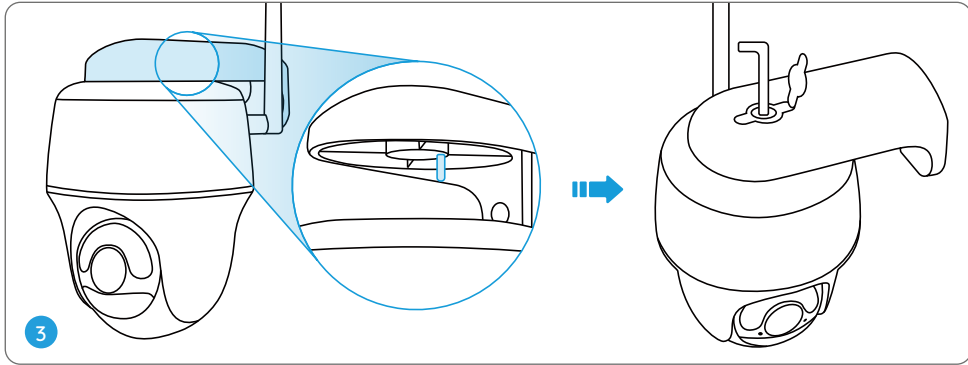


Drill holes in accordance with the mounting hole template and screw the camera bracket to the wall.



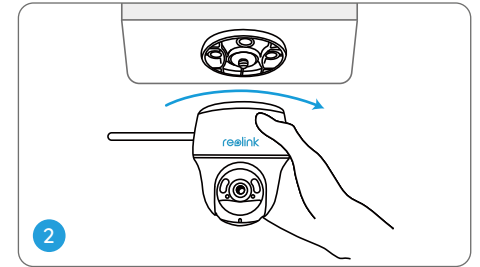
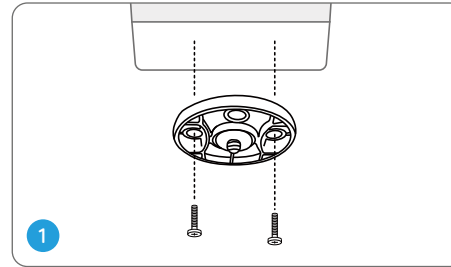
Install the antenna to the camera.

NOTE: Use the drywall anchors included in the package if needed.



Align the white hole on the camera top with the white hollow screw on the bracket. Use a wrench and a hex head screw provided to secure the camera into place. Then cover the rubber plug.

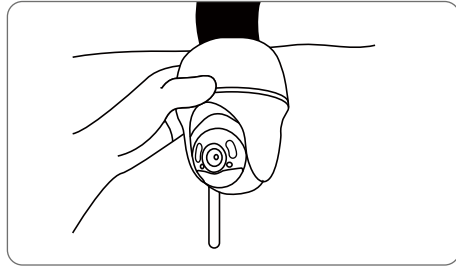
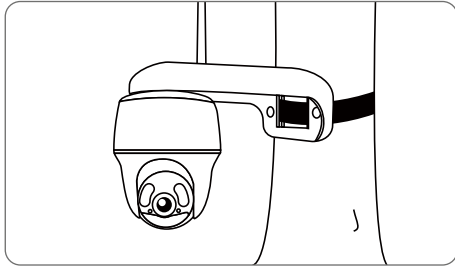
Mount the Camera to Ceiling



Install the mount base to the ceiling. Align the camera with the bracket and turn the camera unit clockwise to lock it in position.

Install the Camera with Loop Strap

You are allowed to strap the camera to a pillar with both the security mount and ceiling bracket. Thread the provided strap to the plate and fasten it to a pillar. Next, attach the camera to the plate and you are good to go.



Safety Instructions of Battery Usage

The camera is not designed for running 24/7 at full capacity or around-the-clock live streaming. It's designed to record motion events and to live view remotely only when you need it. Learn useful tips on how to extend the battery life in this post: <https://support.reolink.com/hc/en-us/articles/360006991893>

1. The battery is built-in, so do not remove it from the camera.
2. Charge the rechargeable battery with a standard and high-quality DC 5V/9V battery charger or Reolink solar panel. Do not charge the battery with solar panels from any other brands.
3. Charge the battery when temperatures are between 0°C and 45°C and always use the battery when temperatures are between -20°C and 60°C.
5. Do not charge, use or store the battery near any ignition sources, such as fire or heaters.
6. Do not use the battery if it gives off an odor, generates heat, becomes discolored or deformed, or appears abnormal in any ways. If the battery is being used or charged, remove the battery from the device or the charger immediately, and stop using it.
7. Always follow the local waste and recycle laws when you get rid of the used battery.

Troubleshooting

Camera is Not Powering On

If your camera is not powering on, please try the following solutions:

- Make sure the power switch is turned on.
- Charge the battery with a DC 5V/2A power adapter. When the green light is on, the battery is fully charged

If these won't work, contact Reolink Support.

Failed to Scan QR Code on the Phone

If you cannot scan the QR code on your phone, please try the following solutions:

- Remove the protective film from the camera lens.
- Wipe the camera lens with a dry paper/towel/tissue.
- Vary the distance between your camera and the mobile phone so that the camera can focus better.

- Try to scan the QR code under sufficient lighting.

If these won't work, contact Reolink Support.

Specification

Operating Temperature:
-10°C to 55°C (14°F to 131°F)

Size: 98 x 112 mm
Weight (Battery included): 481g

For more specifications, visit the Reolink official website.

Notification of Compliance

CE Declaration of Conformity

Hereby, Reolink declares that the radio equipment type - Argus PT Ultra is in compliance with Directive 2014/53/EU. The full text of the EU declaration of conformity is available at a paper copy provided with the shipped product.

UKCA Declaration of Conformity

Hereby, Reolink declares that the radio equipment type-Argus PT Ultra is in compliance with UK Radio Equipment Regulation 2017. The full text of the UK declaration of conformity is available at a paper copy provided with the shipped product.

FCC Compliance Statements

This device complies with Part 15 of the FCC Rules. Operation is subject to the following two conditions: (1) this device may not cause harmful interference, and (2) this device must accept any interference received, including interference that may cause undesired operation.

Note: This equipment has been tested and found to comply with the limits for a Class B digital device, pursuant to Part 15 of the FCC Rules. These limits are designed to provide reasonable protection against harmful interference in a residential installation. This equipment generates, uses and can radiate radio frequency energy and, if not installed and used in accordance with the instructions, may cause harmful interference to radio communications. However, there is no guarantee that interference will not occur in a particular installation. If this equipment does cause harmful interference to radio or television reception, which can be determined by turning the equipment off and on, the user is encouraged to try to correct the interference by one or more of the following measures:

- Reorient or relocate the receiving antenna.

- Increase the separation between the equipment and receiver.
- Connect the equipment into an outlet on a circuit different from that to which the receiver is connected.
- Consult the dealer or an experienced radio/TV technician for help.

Caution: Changes or modifications not expressly approved by the party responsible for compliance could void the user's authority to operate the equipment.

FCC Radiation Exposure statement

This equipment complies with FCC radiation exposure limits set forth for an uncontrolled environment. This equipment should be installed and operated with minimum distance 20cm between the radiator and your body.

ISED Compliance Statements

This device contains licence-exempt transmitter(s)/receiver(s) that comply with Innovation, Science and Economic Development Canada's licence-exempt RSS(s). Operation is subject to the following two conditions:

- (1) This device may not cause interference.

(2) This device must accept any interference, including interference that may cause undesired operation of the device.

L' émetteur/récepteur exempt de licence contenu dans le présent appareil est conforme aux CNR d'Innovation, Sciences et Développement économique Canada applicables aux appareils radio exempts de licence. L' exploitation est autorisée aux deux conditions suivantes :

- (1) L' appareil ne doit pas produire de brouillage;
- (2) L' appareil doit accepter tout brouillage radioélectrique subi, même si le brouillage est susceptible d'en compromettre le fonctionnement.

ISED Radiation Exposure statement

This equipment complies with IC RSS-102 radiation exposure limits set forth for an uncontrolled environment. This equipment should be installed and operated with minimum distance 20 cm between the radiator and your body.

Cet équipement est conforme aux limites d'exposition aux radiations IC CNR-102 établies pour un environnement non contrôlé. Cet équipement doit être installé et utilisé avec une distance minimale de 20 cm entre le radiateur et votre corps. Cet émetteur ne doit pas être colocalisé ou fonctionner en conjonction avec une autre antenne ou un autre émetteur.

Note: Operation of 5150-5250 MHz is restricted to indoor use only in Canada.

Le fonctionnement de 5150-5250 MHz est limité à une utilisation en intérieur uniquement.

Limited Warranty

This product comes with a 2-year limited warranty that is valid only if purchased from Reolink Official Store or a Reolink authorized reseller. Learn more: <https://reolink.com/warranty-and-return/>.

Terms and Privacy

Use of the product is subject to your agreement to the Terms of Service and Privacy Policy at reolink.com. Keep out of reach of children.

WiFi Operating Frequency

OPERATING FREQUENCY :
 (the maximum transmitted power)
 2.4GHz: 2412MHz-2472MHz
 (EIRP:17.52dBm) (Only for EU/UK)
 5GHz: 5180MHz-5240MHz
 5260MHz-5320MHz
 5500MHz-5700MHz

(EIRP:13.87dBm) (Only for EU/UK)5.8GHz:
 5745MHz-5825MHz (EIRP:13.98dBm) (Only for EU/UK)



The functions of Wireless Access Systems including Radio Local Area Networks(WAS/RLANs) within the band 5150-5350 MHz for this device are restricted to indoor use only within all European Union countries (BE/BG/CZ/DK/DE/EE/IE/EL/ES/FR/HR/IT/CY/LV/LT/LU/HU/MT/NL/AT/PL/PT/RO/SI/SK/FI/SE/TR/N O/CH/IS/LI/UK(NI))



Correct Disposal of This Product

This marking indicates that this product should not be disposed with other household wastes throughout the EU. To prevent possible harm to the environment or human health from uncontrolled waste disposal, recycle it responsibly to promote the sustainable reuse of material resources. To return your used device, please use the return and collection systems or contact the retailer where the product was purchased. They can take this product for environmentally safe recycling.

The user manual for LE-LAN devices shall contain instructions related to the restrictions mentioned in the above sections, namely that:

i. the device for operation in the band 5150–5250 MHz is only for indoor use to reduce the potential for harmful interference to co-channel mobile satellite systems;

ii. for devices with detachable antenna(s), the maximum antenna gain permitted for devices in the bands 5250-5350 MHz and 5470-5725 MHz shall be such that the equipment still complies with the e.i.r.p. limit;

iii. for devices with detachable antenna(s), the maximum antenna gain permitted for devices in the band 5725-5850 MHz shall be such that the equipment still complies with the e.i.r.p. limits as appropriate; and

iv. le dispositif utilisé dans la bande 5150-5250 MHz est réservé à une utilisation en intérieur afin de réduire le risque de brouillage préjudiciable aux systèmes mobiles par satellite dans le même canal;

v. pour les dispositifs à antenne (s) détachable (s), le gain d'antenne maximal autorisé pour les dispositifs dans les bandes 5250-5350 MHz et 5470-5725 MHz doit être tel que l'équipement soit toujours conforme à la norme e.i.r.p. limite;

vi. pour les dispositifs à antenne (s) détachable (s), le gain d'antenne maximal autorisé pour les dispositifs de la bande 5725-5850 MHz doit être tel que l'équipement soit toujours conforme à la norme e.i.r.p. les limites, le cas échéant; et

Statement

This radio transmitter [26839-2302A] has been approved by Innovation, Science and Economic Development Canada to operate with the antenna types listed below, with the maximum permissible gain indicated. Antenna types not included in this list that have a gain greater than the maximum gain indicated for any type listed are strictly prohibited for use with this device.

Le présent émetteur radio [26839-2302A] a été approuvé par Innovation, Sciences et Développement économique Canada pour fonctionner avec les types d'antenne énumérés ci-dessous et ayant un gain admissible maximal. Les types d'antenne non inclus dans cette liste, et dont le gain est supérieur au gain maximal indiqué pour tout type figurant sur la liste, sont strictement interdits pour l'exploitation de l'émetteur.

Technical Support

If you need any technical help, please visit our official support site and contact our support team before returning the products, <https://support.reolink.com>.

Product Ident GmbH

Hoferstasse 9B, 71636 Ludwigsburg, Germany
Email: prodsg@libelleconsulting.com

APEX CE SPECIALISTS LIMITED

89 Princess Street, Manchester, M14HT, UK
Email: info@apex-ce.com