

Examining Report

Customer name: IRay Technology Co., Ltd.

Kexin wireless material number: AG-040033-1321

Specification description: WIFI built-in antenna (FPC 259) -Black
1.13-line-terminal (4 generation), L=120mm

Factory signature:

Edit	Check	Approve
Qiu Cuiping	He Xing	Hu Chong

Client

signature:

Edit	Check	Approve

Shenzhen Kexin wireless contact information

Factory address: Shenzhen OFFICE: 501,5th Floor, Shunfu Science Park, No.28, Jinfeng Road, Longgang Street, Longgang District, Shenzhen		
Tel: 0755-28220572 Fax: 0755-28483275		
Website: http:// www.kxwxjs.com		
Business contact person: Hua Yanhong		Mobile phone: 13543293770
Technical contact person: Wang Fei		Mobile phone: 15220065137
Quality contact person: Li Bin		Mobile phone: 13828867780

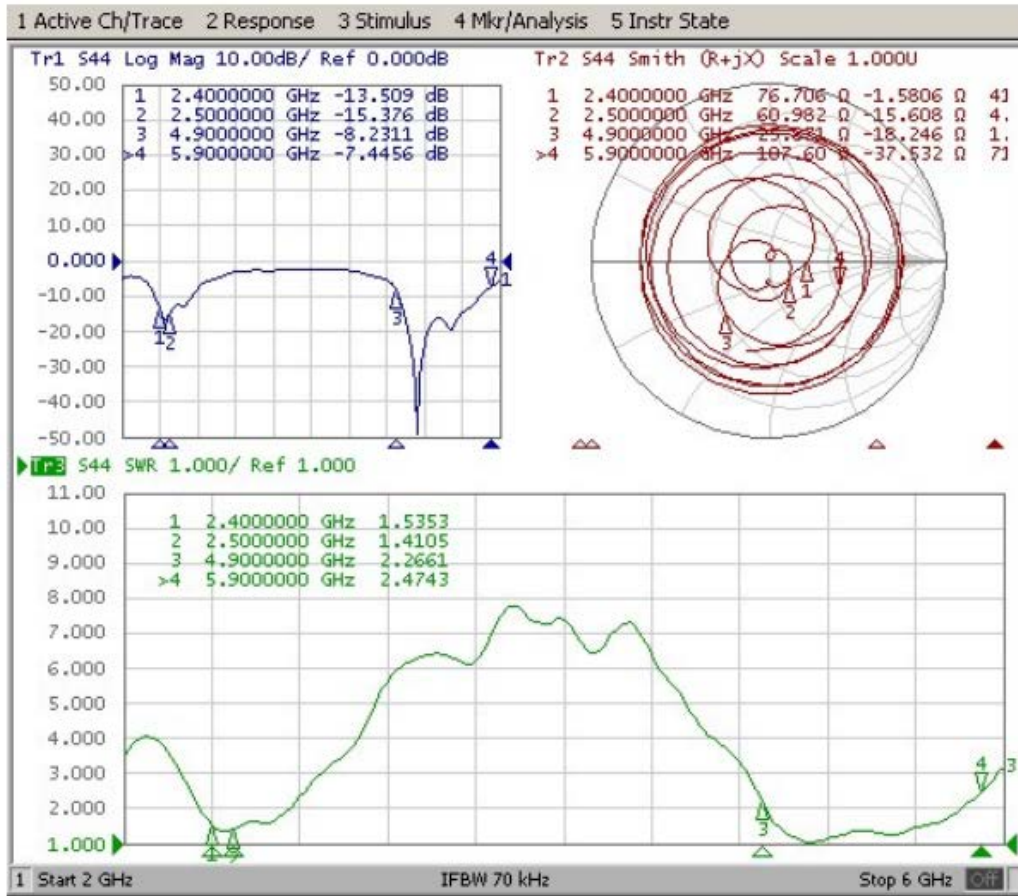
Catalogue

1. Cover.....	1
2.....	3
3. The product map.....	4
4.performance parameters.....	5
5. Electrical performance test report.....	6

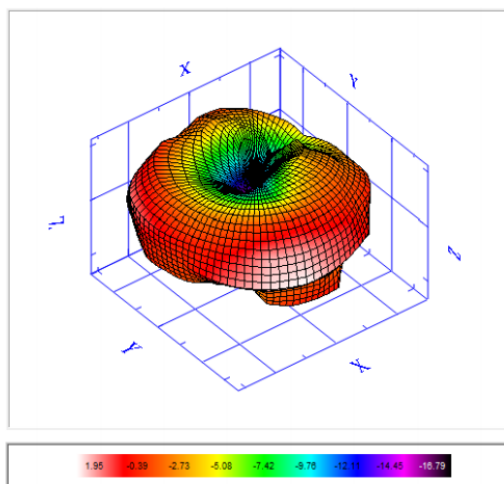
4. Performance parameters

Electrical parameters	
frequency range	2400-2500/4900-5900MHz
input impedance	50Ω
standing-wave ratio	Control the seal of the project
maximum gain	/
power capacity	1w
Through the test	thoroughfare
Polarization mode	linear
radiation direction	omnidirectional
Connector model	terminal
Mechanical parameters	
wire length	120±3mm
maintenance energy	1KG
coax	Black 1.13 line
Salt Spray Test	24H
environmental parameter	
working temperature	-20°C~40°C
Storage temperature	-20°C~40°C

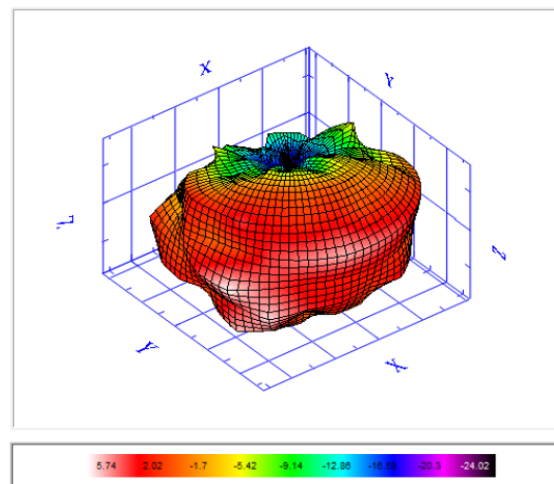
5. Electrical performance test report



Frequency	5150	5250	5350	5470	5600	5700	5725	5785	5800	5850
E-Total Peak Gain (dBi)	5.43	5.28	6.07	5.74	5.32	5.9	6.17	6.95	6.73	6.29
Efficiency (%)	65.61	65.77	71.9	65.94	64.75	60.43	72.92	75.56	72.47	77.89
Average Gain (dB)	-1.83	-1.82	-1.43	-1.81	-1.89	-2.19	-1.37	-1.22	-1.4	-1.09
Frequency	2400	2410	2420	2430	2440	2450	2460	2470	2480	2500
E-Total Peak Gain (dBi)	1.78	1.79	1.77	1.91	1.71	1.95	2.06	2.29	2.47	2.31
Efficiency (%)	52.03	52.9	55.32	53.97	50.38	50.26	51.78	55.93	61.1	59.06
Average Gain (dB)	-2.84	-2.77	-2.57	-2.68	-2.98	-2.99	-2.86	-2.52	-2.14	-2.29



2450MHz



5850MHz