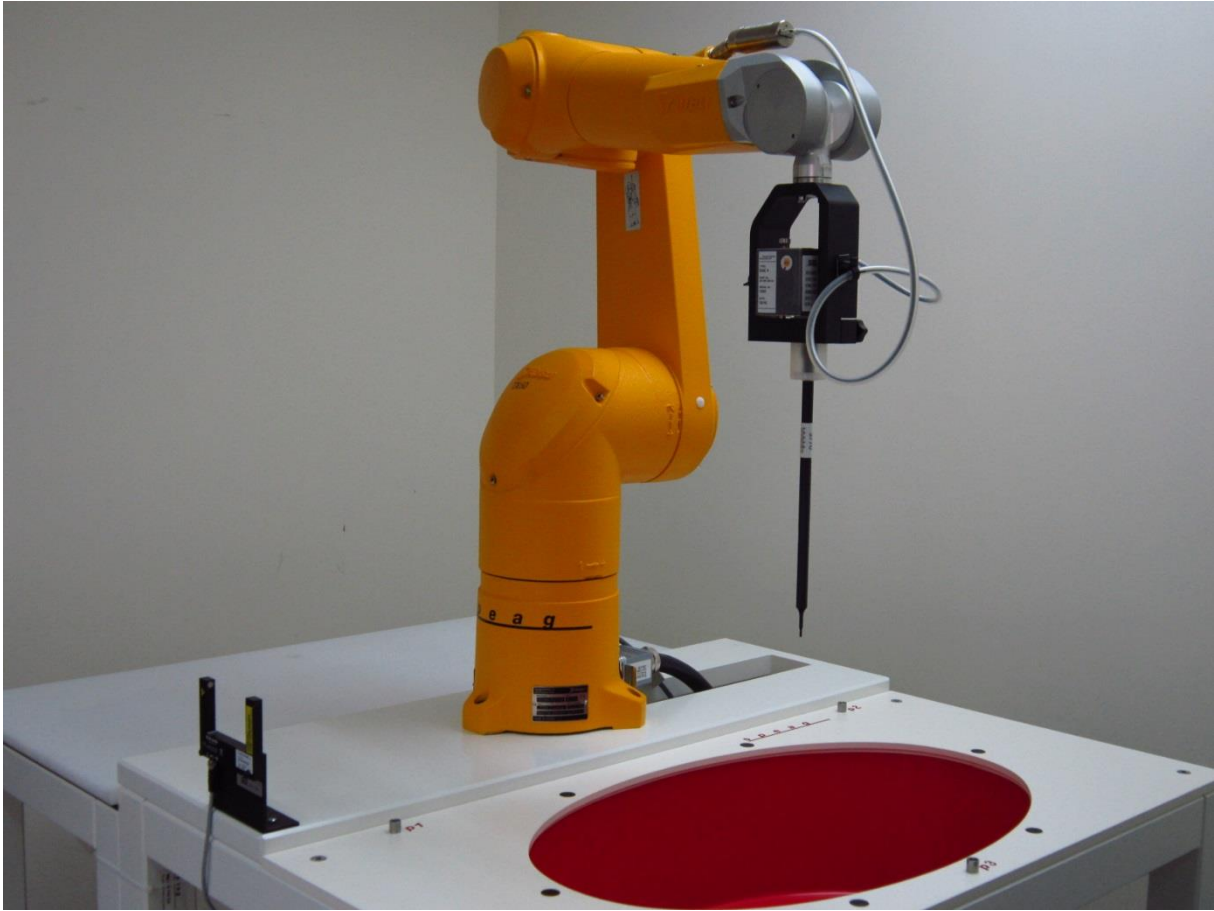


Appendix D for KSCR230800154002

Photographs

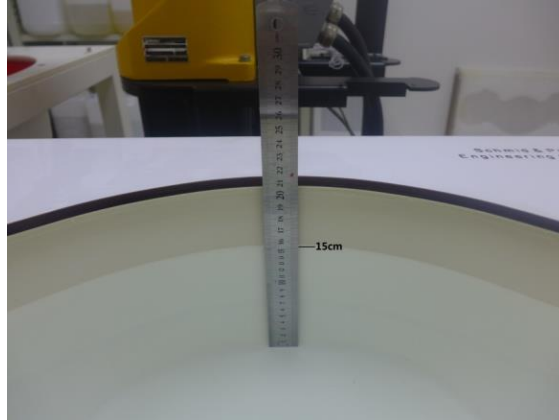
1. SAR measurement System
2. Photographs of Tissue Simulate Liquid
3. Photographs of EUT test position
4. EUT Antenna Locations
5. EUT Constructional Details

1. SAR measurement System



2. Photographs of Tissue Simulate Liquid

Tissue Simulant Liquid for Head 2450



3. Photographs of EUT test position

Front side 0mm	Back Side 0mm
 A photograph showing the front side of a black and red iRay APT-10000 EUT test probe. The probe is mounted on a black stand and is positioned against a white surface. The iRay logo and model number are visible on the side of the probe.	 A photograph showing the back side of the EUT test probe. A white label with the text 'Ad: EUT' and 'ISE 1000112' is attached to the back of the probe. The probe is mounted on a black stand and is positioned against a white surface.
Left Side 0mm	Right Side 0mm
 A photograph showing the left side of the EUT test probe. The probe is mounted on a black stand and is positioned against a white surface.	 A photograph showing the right side of the EUT test probe. The probe is mounted on a black stand and is positioned against a white surface.

Top Side 0mm



4. EUT Antenna Locations



5. EUT Constructional Details

Details please Refer to Appendix –

Photographs of EUT Constructional Details for KSCR2308001540AT.