



PRODUCT MANUAL

Intelligence, technology, security



V380 Pro

When you unbox the device, your first step should be to use the included AC adapter and Micro-USB cable to plug your V380 camera in, and follow these steps to complete your setup.

Note: The camera requires a SD card to store video recordings, accessories do NOT include any SD cards, please purchase one separately.

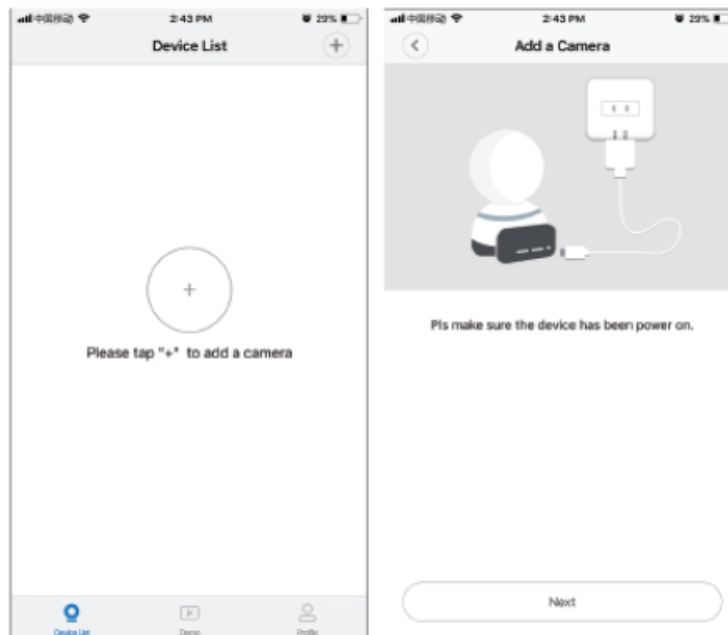
Getting started

Scan the below QR code with mobile phone to download "V380 Pro" , besides, it's available to install "V380 Pro" through Google Play Store or App Store.

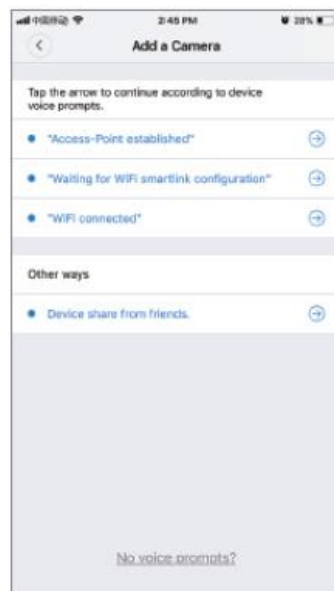


Once the camera is power on, follow the steps below to complete the setup:

1. Tap " + " and then tap " Next ".



2. Wait until you hear "Access-Point established" or "Waiting for WiFi smartlink configuration", now you can start connecting the camera to Wi-Fi.



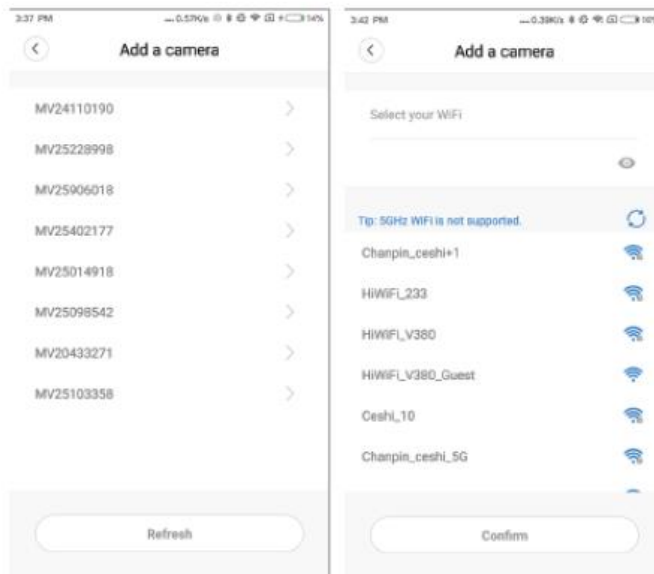
3. If you hear the camera voice prompt "Access-Point established", choose method **A** or **B** to configure the camera.

4. If you hear the camera voice prompt "Waiting for WiFi smartlink configuration", choose method **C** to configure the camera.

A.AP quick configuration

Android:

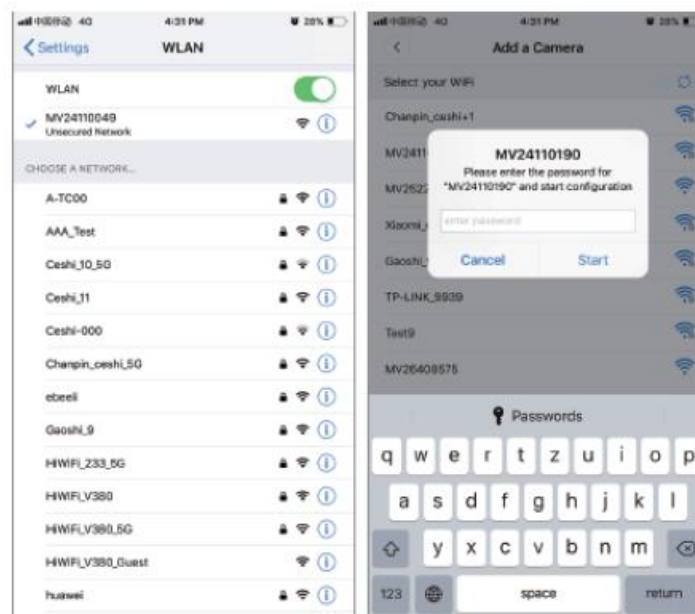
- Tap "Access-Point established", MV+ID will be shown, tap it to proceed.
- Choose your Wi-Fi network, enter the password, tap "Confirm", and the camera will start connecting Wi-Fi.
- Once you hear the camera voice prompt "WiFi connected", it will be shown on device list.
- The last step for setting up your camera is to set a password for the camera.



iOS:

- Tap "Access-Point established" , go to your Phone settings, tap "Wi-Fi" and connect "MV+ID" .
- Wait for the status bar to display "wifi" icon, and then return to the App, tap "Next" .

- Choose your Wi-Fi network, enter the password, tap "Confirm", and the camera will start connecting Wi-Fi.
- Once you hear the camera voice prompt "WiFi connected", it will be shown on device list.
- The last step for setting up your camera is to set a password for the camera.

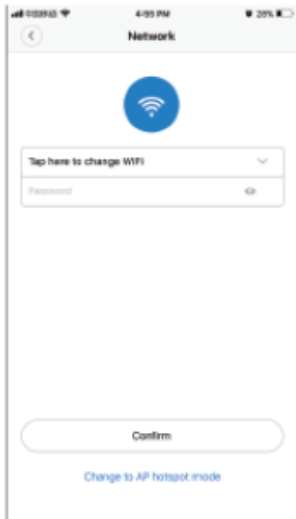
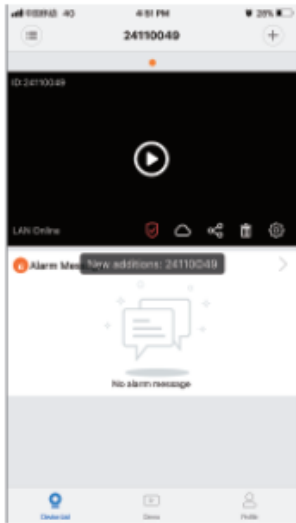


B.AP Hot spot configuration

- Go to your phone settings, tap "Wi-Fi" and connect "MV+ID" .
- Wait for the status bar to display "wifi" icon, and then return to the App, pull down the device list, the device will be shown on the list.
- You are now able to view live stream on LAN, but in order to achieve remote view, you need to proceed the following steps:

Tap "setttings" — "network" — "change to wi-fi station mode" , then choose your Wi-Fi network, enter the password, tap "confirm" , and the camera will start connecting Wi-Fi.

- Once you hear the camera voice prompt "WiFi connected" , the camera is ready to use.



Note:

This equipment has been tested and found to comply with the limits for a Class B digital device, pursuant to part 15 of the FCC Rules. These limits are designed to provide reasonable protection against harmful interference in a residential installation. This equipment generates uses and can radiate radio frequency energy and, if not installed and used in accordance with the instructions, may cause harmful interference to radio communications.

However , there is no guarantee that interference will not occur in a particular installation. If this equipment does cause harmful interference to radio or television reception, which can be determined by turning the equipment off and on, the user is encouraged to try to correct the interference by one or more of the following measures:

- Reorient or relocate the receiving antenna.
- Increase the separation between the equipment and receiver.
- Connect the equipment into an outlet on a circuit different from that to which the receiver is connected.
- Consult the dealer or an experienced radio/TV technician for help.

This equipment complies with FCC radiation exposure limits set forth for an uncontrolled environment. This equipment should be installed and operated with minimum distance 20cm between the radiator & your body.