

# Appendix for 5G NR n71

Model: LGE-NX9

BTL-FCCP-7-2203G019

<b>Table of Contents</b>	<b>Page</b>
<b>1 . APPENDIX A - EFFECTIVE (ISOTROPIC) RADIATED POWER OUTPUT DATA FOR SA</b>	<b>3</b>
1.1 TEST RESULTS	3
<b>2 . APPENDIX B - PEAK-TO-AVERAGE RATIO FOR SA</b>	<b>6</b>
2.1 TEST RESULTS	6
<b>3 . APPENDIX C - MODULATION CHARACTERISTICS FOR SA</b>	<b>7</b>
3.1 TEST RESULTS	7
3.2 TEST PLOTS	8
3.2.1 CHANNEL BANDWIDTH=20MHZ	8
<b>4 . APPENDIX D - 26DB BANDWIDTH AND OCCUPIED BANDWIDTH FOR SA10</b>	
4.1 TEST RESULTS	10
4.2 TEST PLOTS	14
4.2.1 CHANNEL BANDWIDTH=5MHZ	14
4.2.2 CHANNEL BANDWIDTH=10MHZ	19
4.2.3 CHANNEL BANDWIDTH=15MHZ	24
4.2.4 CHANNEL BANDWIDTH=20MHZ	29
<b>5 . APPENDIX E - BAND EDGE FOR SA</b>	<b>34</b>
5.1 TEST RESULTS	34
5.2 TEST PLOTS	38
5.2.1 CHANNEL BANDWIDTH=5MHZ	38
5.2.2 CHANNEL BANDWIDTH=20MHZ	48
<b>6 . APPENDIX F - CONDUCTED SPURIOUS EMISSION FOR SA</b>	<b>57</b>
6.1 TEST RESULTS	57
6.2 TEST PLOTS	58
6.2.1 CHANNEL BANDWIDTH=5MHZ	58
6.2.2 CHANNEL BANDWIDTH=15MHZ	66
6.2.3 CHANNEL BANDWIDTH=20MHZ	74
<b>7 . APPENDIX G - FREQUENCY STABILITY FOR SA</b>	<b>82</b>
7.1 TEST RESULTS	82
7.1.1 FREQUENCY ERROR VS. VOLTAGE	82
7.1.2 FREQUENCY ERROR VS. TEMPERATURE	82

## 1. APPENDIX A - EFFECTIVE (ISOTROPIC) RADIATED POWER OUTPUT DATA FOR SA

### 1.1 TEST RESULTS

NR Band	SCS [kHz]	BW [MHz]	Channel	Freq [MHz]	Modulation	RB Config	Power [dBm]	ERP [dBm]	Limit [dBm]	Verdict
N71	15	5	L	665.5	DFT-PI/2BPSK	Inner_Full	22.26	9.11	34.77	PASS
N71	15	5	L	665.5	DFT-PI/2BPSK	Inner_1RB_Left	22.17	9.02	34.77	PASS
N71	15	5	L	665.5	DFT-PI/2BPSK	Inner_1RB_Right	22.14	8.99	34.77	PASS
N71	15	5	L	665.5	DFT-PI/2BPSK	Outer_Full	22.16	9.01	34.77	PASS
N71	15	5	L	665.5	DFT-QPSK	Inner_Full	22.18	9.03	34.77	PASS
N71	15	5	L	665.5	DFT-QPSK	Inner_1RB_Left	22.11	8.96	34.77	PASS
N71	15	5	L	665.5	DFT-QPSK	Inner_1RB_Right	22.17	9.02	34.77	PASS
N71	15	5	L	665.5	DFT-QPSK	Outer_Full	22.18	9.03	34.77	PASS
N71	15	5	L	665.5	DFT-16QAM	Inner_Full	22.43	9.28	34.77	PASS
N71	15	5	L	665.5	DFT-16QAM	Inner_1RB_Left	22.39	9.24	34.77	PASS
N71	15	5	L	665.5	DFT-16QAM	Inner_1RB_Right	22.37	9.22	34.77	PASS
N71	15	5	L	665.5	DFT-16QAM	Outer_Full	22.37	9.22	34.77	PASS
N71	15	5	M	680.5	DFT-PI/2BPSK	Inner_Full	22.18	9.03	34.77	PASS
N71	15	5	M	680.5	DFT-PI/2BPSK	Inner_1RB_Left	22.04	8.89	34.77	PASS
N71	15	5	M	680.5	DFT-PI/2BPSK	Inner_1RB_Right	22.08	8.93	34.77	PASS
N71	15	5	M	680.5	DFT-PI/2BPSK	Outer_Full	22.05	8.9	34.77	PASS
N71	15	5	M	680.5	DFT-QPSK	Inner_Full	22.09	8.94	34.77	PASS
N71	15	5	M	680.5	DFT-QPSK	Inner_1RB_Left	22.06	8.91	34.77	PASS
N71	15	5	M	680.5	DFT-QPSK	Inner_1RB_Right	21.99	8.84	34.77	PASS
N71	15	5	M	680.5	DFT-QPSK	Outer_Full	22.04	8.89	34.77	PASS
N71	15	5	M	680.5	DFT-16QAM	Inner_Full	22.25	9.1	34.77	PASS
N71	15	5	M	680.5	DFT-16QAM	Inner_1RB_Left	22.29	9.14	34.77	PASS
N71	15	5	M	680.5	DFT-16QAM	Inner_1RB_Right	22.29	9.14	34.77	PASS
N71	15	5	M	680.5	DFT-16QAM	Outer_Full	22.34	9.19	34.77	PASS
N71	15	5	H	695.5	DFT-PI/2BPSK	Inner_Full	21.98	8.83	34.77	PASS
N71	15	5	H	695.5	DFT-PI/2BPSK	Inner_1RB_Left	21.99	8.84	34.77	PASS
N71	15	5	H	695.5	DFT-PI/2BPSK	Inner_1RB_Right	21.93	8.78	34.77	PASS
N71	15	5	H	695.5	DFT-PI/2BPSK	Outer_Full	22.09	8.94	34.77	PASS
N71	15	5	H	695.5	DFT-QPSK	Inner_Full	21.97	8.82	34.77	PASS
N71	15	5	H	695.5	DFT-QPSK	Inner_1RB_Left	21.90	8.75	34.77	PASS
N71	15	5	H	695.5	DFT-QPSK	Inner_1RB_Right	21.95	8.8	34.77	PASS
N71	15	5	H	695.5	DFT-QPSK	Outer_Full	22.04	8.89	34.77	PASS
N71	15	5	H	695.5	DFT-16QAM	Inner_Full	22.18	9.03	34.77	PASS
N71	15	5	H	695.5	DFT-16QAM	Inner_1RB_Left	22.19	9.04	34.77	PASS
N71	15	5	H	695.5	DFT-16QAM	Inner_1RB_Right	22.19	9.04	34.77	PASS
N71	15	5	H	695.5	DFT-16QAM	Outer_Full	22.20	9.05	34.77	PASS

NR Band	SCS [kHz]	BW [MHz]	Channel	Freq [MHz]	Modulation	RB Config	Power [dBm]	ERP [dBm]	Limit [dBm]	Verdict
N71	15	15	L	670.5	DFT-PI/2BPSK	Inner_Full	22.34	9.19	34.77	PASS
N71	15	15	L	670.5	DFT-PI/2BPSK	Inner_1RB_Left	22.30	9.15	34.77	PASS
N71	15	15	L	670.5	DFT-PI/2BPSK	Inner_1RB_Right	22.24	9.09	34.77	PASS
N71	15	15	L	670.5	DFT-PI/2BPSK	Outer_Full	22.35	9.2	34.77	PASS
N71	15	15	L	670.5	DFT-QPSK	Inner_Full	22.30	9.15	34.77	PASS
N71	15	15	L	670.5	DFT-QPSK	Inner_1RB_Left	22.07	8.92	34.77	PASS
N71	15	15	L	670.5	DFT-QPSK	Inner_1RB_Right	22.16	9.01	34.77	PASS
N71	15	15	L	670.5	DFT-QPSK	Outer_Full	22.33	9.18	34.77	PASS
N71	15	15	L	670.5	DFT-16QAM	Inner_Full	22.57	9.42	34.77	PASS
N71	15	15	L	670.5	DFT-16QAM	Inner_1RB_Left	22.46	9.31	34.77	PASS
N71	15	15	L	670.5	DFT-16QAM	Inner_1RB_Right	22.39	9.24	34.77	PASS
N71	15	15	L	670.5	DFT-16QAM	Outer_Full	22.63	9.48	34.77	PASS
N71	15	15	M	680.5	DFT-PI/2BPSK	Inner_Full	22.34	9.19	34.77	PASS
N71	15	15	M	680.5	DFT-PI/2BPSK	Inner_1RB_Left	22.08	8.93	34.77	PASS
N71	15	15	M	680.5	DFT-PI/2BPSK	Inner_1RB_Right	22.22	9.07	34.77	PASS
N71	15	15	M	680.5	DFT-PI/2BPSK	Outer_Full	22.19	9.04	34.77	PASS
N71	15	15	M	680.5	DFT-QPSK	Inner_Full	22.21	9.06	34.77	PASS
N71	15	15	M	680.5	DFT-QPSK	Inner_1RB_Left	22.09	8.94	34.77	PASS
N71	15	15	M	680.5	DFT-QPSK	Inner_1RB_Right	22.12	8.97	34.77	PASS
N71	15	15	M	680.5	DFT-QPSK	Outer_Full	22.21	9.06	34.77	PASS
N71	15	15	M	680.5	DFT-16QAM	Inner_Full	22.46	9.31	34.77	PASS
N71	15	15	M	680.5	DFT-16QAM	Inner_1RB_Left	22.22	9.07	34.77	PASS
N71	15	15	M	680.5	DFT-16QAM	Inner_1RB_Right	22.18	9.03	34.77	PASS
N71	15	15	M	680.5	DFT-16QAM	Outer_Full	22.40	9.25	34.77	PASS
N71	15	15	H	690.5	DFT-PI/2BPSK	Inner_Full	22.17	9.02	34.77	PASS
N71	15	15	H	690.5	DFT-PI/2BPSK	Inner_1RB_Left	22.24	9.09	34.77	PASS
N71	15	15	H	690.5	DFT-PI/2BPSK	Inner_1RB_Right	21.92	8.77	34.77	PASS
N71	15	15	H	690.5	DFT-PI/2BPSK	Outer_Full	22.16	9.01	34.77	PASS
N71	15	15	H	690.5	DFT-QPSK	Inner_Full	22.25	9.1	34.77	PASS
N71	15	15	H	690.5	DFT-QPSK	Inner_1RB_Left	22.13	8.98	34.77	PASS
N71	15	15	H	690.5	DFT-QPSK	Inner_1RB_Right	21.92	8.77	34.77	PASS
N71	15	15	H	690.5	DFT-QPSK	Outer_Full	22.12	8.97	34.77	PASS
N71	15	15	H	690.5	DFT-16QAM	Inner_Full	22.35	9.2	34.77	PASS
N71	15	15	H	690.5	DFT-16QAM	Inner_1RB_Left	22.36	9.21	34.77	PASS
N71	15	15	H	690.5	DFT-16QAM	Inner_1RB_Right	22.17	9.02	34.77	PASS
N71	15	15	H	690.5	DFT-16QAM	Outer_Full	22.28	9.13	34.77	PASS

NR Band	SCS [kHz]	BW [MHz]	Channel	Freq [MHz]	Modulation	RB Config	Power [dBm]	ERP [dBm]	Limit [dBm]	Verdict
N71	15	20	L	673.0	DFT-PI/2BPSK	Inner_Full	22.34	9.19	34.77	PASS
N71	15	20	L	673.0	DFT-PI/2BPSK	Inner_1RB_Left	22.24	9.09	34.77	PASS
N71	15	20	L	673.0	DFT-PI/2BPSK	Inner_1RB_Right	22.27	9.12	34.77	PASS
N71	15	20	L	673.0	DFT-PI/2BPSK	Outer_Full	22.43	9.28	34.77	PASS
N71	15	20	L	673.0	DFT-QPSK	Inner_Full	22.22	9.07	34.77	PASS
N71	15	20	L	673.0	DFT-QPSK	Inner_1RB_Left	22.15	9	34.77	PASS
N71	15	20	L	673.0	DFT-QPSK	Inner_1RB_Right	22.18	9.03	34.77	PASS
N71	15	20	L	673.0	DFT-QPSK	Outer_Full	22.34	9.19	34.77	PASS
N71	15	20	L	673.0	DFT-16QAM	Inner_Full	22.51	9.36	34.77	PASS
N71	15	20	L	673.0	DFT-16QAM	Inner_1RB_Left	22.73	9.58	34.77	PASS
N71	15	20	L	673.0	DFT-16QAM	Inner_1RB_Right	22.74	9.59	34.77	PASS
N71	15	20	L	673.0	DFT-16QAM	Outer_Full	22.51	9.36	34.77	PASS
N71	15	20	M	680.5	DFT-PI/2BPSK	Inner_Full	22.33	9.18	34.77	PASS
N71	15	20	M	680.5	DFT-PI/2BPSK	Inner_1RB_Left	22.21	9.06	34.77	PASS
N71	15	20	M	680.5	DFT-PI/2BPSK	Inner_1RB_Right	22.13	8.98	34.77	PASS
N71	15	20	M	680.5	DFT-PI/2BPSK	Outer_Full	22.21	9.06	34.77	PASS
N71	15	20	M	680.5	DFT-QPSK	Inner_Full	22.21	9.06	34.77	PASS
N71	15	20	M	680.5	DFT-QPSK	Inner_1RB_Left	22.19	9.04	34.77	PASS
N71	15	20	M	680.5	DFT-QPSK	Inner_1RB_Right	22.05	8.9	34.77	PASS
N71	15	20	M	680.5	DFT-QPSK	Outer_Full	22.19	9.04	34.77	PASS
N71	15	20	M	680.5	DFT-16QAM	Inner_Full	22.39	9.24	34.77	PASS
N71	15	20	M	680.5	DFT-16QAM	Inner_1RB_Left	22.73	9.58	34.77	PASS
N71	15	20	M	680.5	DFT-16QAM	Inner_1RB_Right	22.52	9.37	34.77	PASS
N71	15	20	M	680.5	DFT-16QAM	Outer_Full	22.38	9.23	34.77	PASS
N71	15	20	H	688.0	DFT-PI/2BPSK	Inner_Full	22.22	9.07	34.77	PASS
N71	15	20	H	688.0	DFT-PI/2BPSK	Inner_1RB_Left	22.28	9.13	34.77	PASS
N71	15	20	H	688.0	DFT-PI/2BPSK	Inner_1RB_Right	22.01	8.86	34.77	PASS
N71	15	20	H	688.0	DFT-PI/2BPSK	Outer_Full	22.23	9.08	34.77	PASS
N71	15	20	H	688.0	DFT-QPSK	Inner_Full	22.13	8.98	34.77	PASS
N71	15	20	H	688.0	DFT-QPSK	Inner_1RB_Left	22.08	8.93	34.77	PASS
N71	15	20	H	688.0	DFT-QPSK	Inner_1RB_Right	21.93	8.78	34.77	PASS
N71	15	20	H	688.0	DFT-QPSK	Outer_Full	22.20	9.05	34.77	PASS
N71	15	20	H	688.0	DFT-16QAM	Inner_Full	22.40	9.25	34.77	PASS
N71	15	20	H	688.0	DFT-16QAM	Inner_1RB_Left	22.66	9.51	34.77	PASS
N71	15	20	H	688.0	DFT-16QAM	Inner_1RB_Right	22.42	9.27	34.77	PASS
N71	15	20	H	688.0	DFT-16QAM	Outer_Full	22.28	9.13	34.77	PASS

## 2. APPENDIX B - PEAK-TO-AVERAGE RATIO FOR SA

### 2.1 TEST RESULTS

NR Band	SCS [kHz]	BW [MHz]	Channel	Freq [MHz]	Modulation	RB Config	Measured [dBm]	Limit [dBm]	Verdict
N71	15	5	M	680.5	DFT-PI/2BPSK	Outer_Full	6.45	≤13	PASS
N71	15	5	M	680.5	DFT-QPSK	Outer_Full	5.96	≤13	PASS
N71	15	5	M	680.5	DFT-16QAM	Outer_Full	7.22	≤13	PASS
N71	15	5	M	680.5	DFT-64QAM	Outer_Full	6.86	≤13	PASS
N71	15	5	M	680.5	DFT-256QAM	Outer_Full	7.01	≤13	PASS
N71	15	5	M	680.5	CP-QPSK	Outer_Full	8.13	≤13	PASS
N71	15	5	M	680.5	CP-16QAM	Outer_Full	8.31	≤13	PASS
N71	15	5	M	680.5	CP-64QAM	Outer_Full	8.59	≤13	PASS
N71	15	5	M	680.5	CP-256QAM	Outer_Full	8.48	≤13	PASS
N71	15	15	M	680.5	DFT-PI/2BPSK	Outer_Full	9.28	≤13	PASS
N71	15	15	M	680.5	DFT-QPSK	Outer_Full	7.35	≤13	PASS
N71	15	15	M	680.5	DFT-16QAM	Outer_Full	7.94	≤13	PASS
N71	15	15	M	680.5	DFT-64QAM	Outer_Full	8.20	≤13	PASS
N71	15	15	M	680.5	DFT-256QAM	Outer_Full	7.87	≤13	PASS
N71	15	15	M	680.5	CP-QPSK	Outer_Full	8.37	≤13	PASS
N71	15	15	M	680.5	CP-16QAM	Outer_Full	8.58	≤13	PASS
N71	15	15	M	680.5	CP-64QAM	Outer_Full	8.67	≤13	PASS
N71	15	15	M	680.5	CP-256QAM	Outer_Full	8.66	≤13	PASS
N71	15	20	M	680.5	DFT-PI/2BPSK	Outer_Full	8.15	≤13	PASS
N71	15	20	M	680.5	DFT-QPSK	Outer_Full	7.78	≤13	PASS
N71	15	20	M	680.5	DFT-16QAM	Outer_Full	7.93	≤13	PASS
N71	15	20	M	680.5	DFT-64QAM	Outer_Full	8.10	≤13	PASS
N71	15	20	M	680.5	DFT-256QAM	Outer_Full	8.12	≤13	PASS
N71	15	20	M	680.5	CP-QPSK	Outer_Full	8.69	≤13	PASS
N71	15	20	M	680.5	CP-16QAM	Outer_Full	8.47	≤13	PASS
N71	15	20	M	680.5	CP-64QAM	Outer_Full	8.43	≤13	PASS
N71	15	20	M	680.5	CP-256QAM	Outer_Full	8.38	≤13	PASS

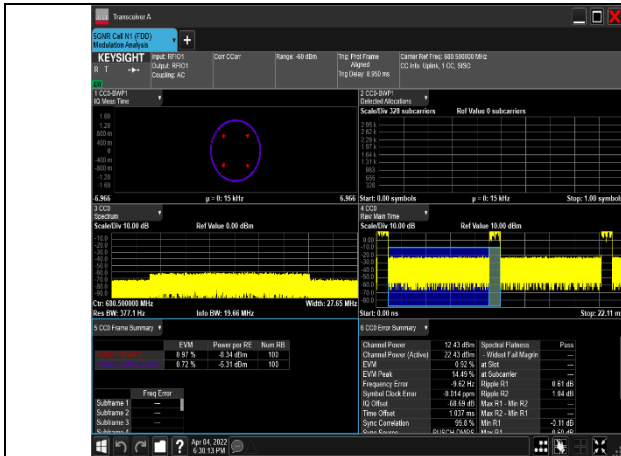
### 3. APPENDIX C - MODULATION CHARACTERISTICS FOR SA

#### 3.1 TEST RESULTS

NR Band	SCS [kHz]	BW [MHz]	Channel	Freq [MHz]	Modulation	RB config	Verdict
N71	15	20	M	680.5	DFT-PI/2BPSK	Outer_Full	PASS
N71	15	20	M	680.5	DFT-QPSK	Outer_Full	PASS
N71	15	20	M	680.5	DFT-16QAM	Outer_Full	PASS
N71	15	20	M	680.5	DFT-64QAM	Outer_Full	PASS
N71	15	20	M	680.5	DFT-256QAM	Outer_Full	PASS
N71	15	20	M	680.5	CP-QPSK	Outer_Full	PASS
N71	15	20	M	680.5	CP-16QAM	Outer_Full	PASS
N71	15	20	M	680.5	CP-64QAM	Outer_Full	PASS
N71	15	20	M	680.5	CP-256QAM	Outer_Full	PASS

## 3.2 TEST PLOTS

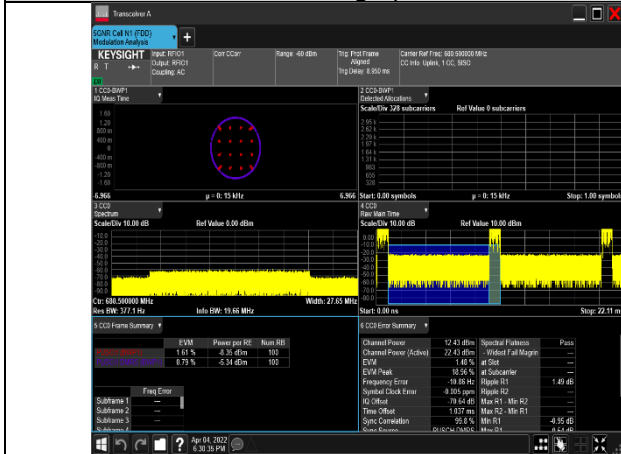
### 3.2.1 CHANNEL BANDWIDTH=20MHZ



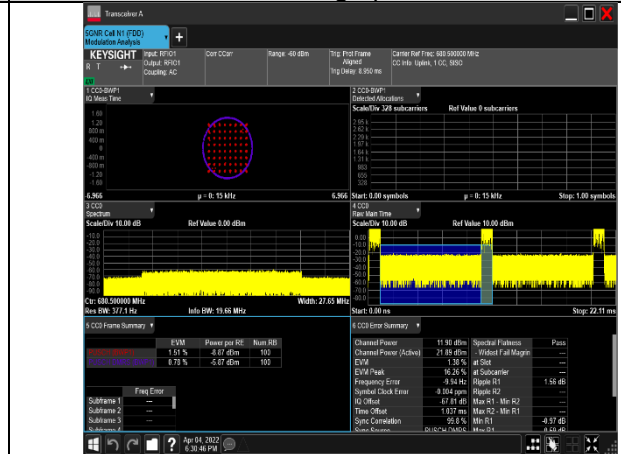
1-N71-PC3-15-20-M-1-DFT-PI/2BPSK-Outer\_Full-100@0-Ant1-see graph-PASS



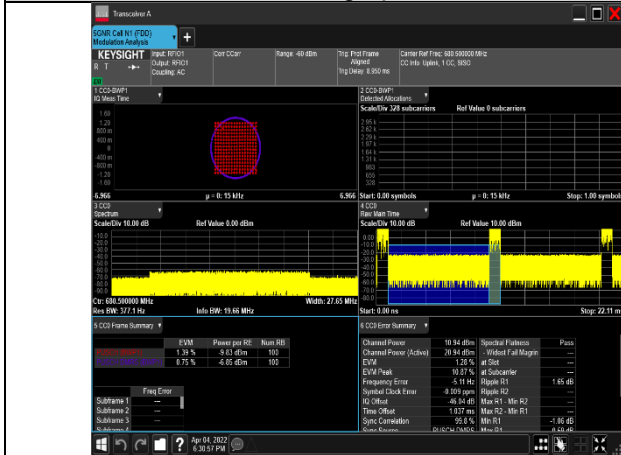
1-N71-PC3-15-20-M-2-DFT-QPSK-Outer\_Full-100@0-Ant1-see graph-PASS



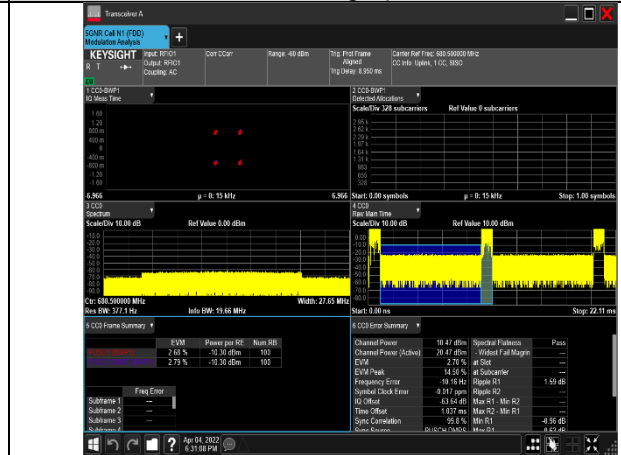
1-N71-PC3-15-20-M-3-DFT-16QAM-Outer\_Full-100@0-Ant1-see graph-PASS



1-N71-PC3-15-20-M-4-DFT-64QAM-Outer\_Full-100@0-Ant1-see graph-PASS

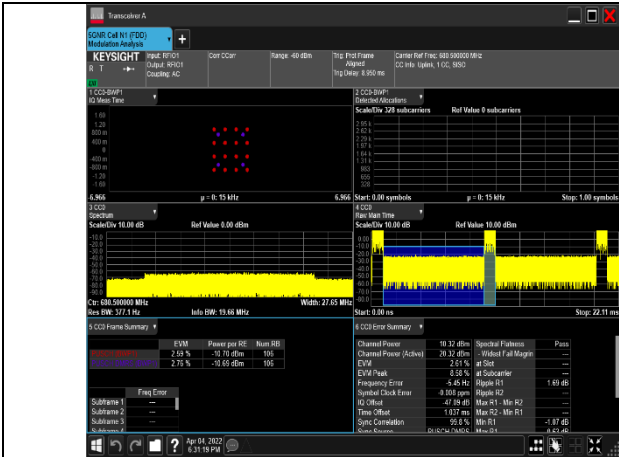


1-N71-PC3-15-20-M-5-DFT-256QAM-Outer\_Full-100@0-Ant1-see graph-PASS

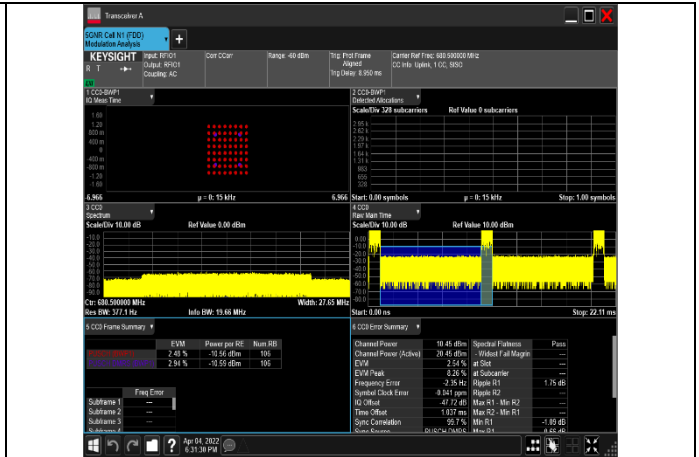


1-N71-PC3-15-20-M-6-CP-QPSK-Outer\_Full-106@0-Ant1-see graph-PASS

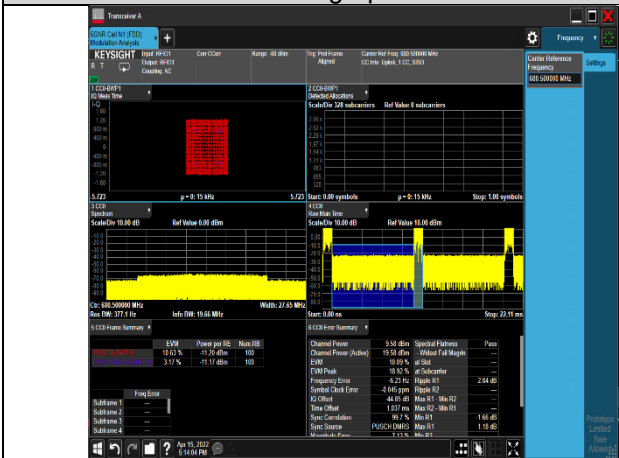




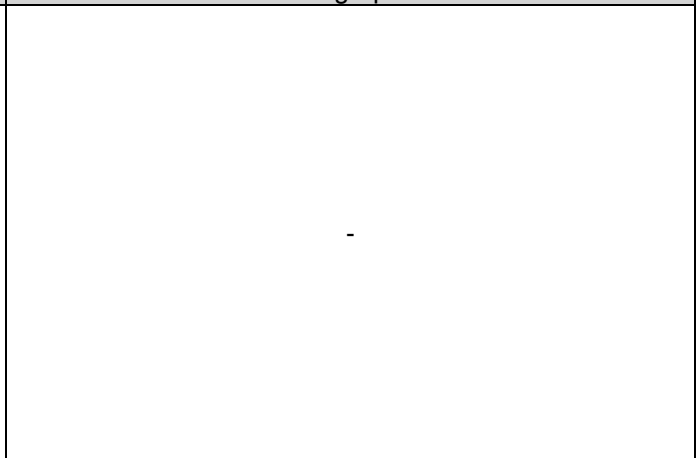
1-N71-PC3-15-20-M-7-CP-16QAM-Outer\_Full-106@0-Ant1-see graph-PASS



1-N71-PC3-15-20-M-8-CP-64QAM-Outer\_Full-106@0-Ant1-see graph-PASS



1-N71-PC3-15-20-M-9-CP-256QAM-Outer\_Full-106@0-Ant1-see graph-PASS



-

## 4. APPENDIX D - 26DB BANDWIDTH AND OCCUPIED BANDWIDTH FOR SA

### 4.1 TEST RESULTS

NR Band	SCS [kHz]	BW [MHz]	Channel	Freq [Mhz]	Modulation	RB config	Occupied Bandwidth [MHz]	Emission Bandwidth [MHz]	Verdict
N71	15	5	L	665.5	CP-QPSK	Outer_Full	4.416	4.610	PASS
N71	15	5	L	665.5	CP-16QAM	Outer_Full	4.412	4.620	PASS
N71	15	5	L	665.5	CP-64QAM	Outer_Full	4.466	4.830	PASS
N71	15	5	L	665.5	CP-256QAM	Outer_Full	4.457	4.810	PASS
N71	15	5	L	665.5	DFT-PI/2BPSK	Outer_Full	4.484	4.820	PASS
N71	15	5	L	665.5	DFT-QPSK	Outer_Full	4.46	4.790	PASS
N71	15	5	L	665.5	DFT-16QAM	Outer_Full	4.477	4.960	PASS
N71	15	5	L	665.5	DFT-64QAM	Outer_Full	4.445	4.660	PASS
N71	15	5	L	665.5	DFT-256QAM	Outer_Full	4.466	4.930	PASS
N71	15	5	M	680.5	CP-QPSK	Outer_Full	4.444	4.900	PASS
N71	15	5	M	680.5	CP-16QAM	Outer_Full	4.406	4.610	PASS
N71	15	5	M	680.5	CP-64QAM	Outer_Full	4.418	4.650	PASS
N71	15	5	M	680.5	CP-256QAM	Outer_Full	4.488	5.130	PASS
N71	15	5	M	680.5	DFT-PI/2BPSK	Outer_Full	4.454	4.830	PASS
N71	15	5	M	680.5	DFT-QPSK	Outer_Full	4.464	5.070	PASS
N71	15	5	M	680.5	DFT-16QAM	Outer_Full	4.412	4.620	PASS
N71	15	5	M	680.5	DFT-64QAM	Outer_Full	4.436	4.670	PASS
N71	15	5	M	680.5	DFT-256QAM	Outer_Full	4.469	4.670	PASS
N71	15	5	H	695.5	CP-QPSK	Outer_Full	4.467	4.620	PASS
N71	15	5	H	695.5	CP-16QAM	Outer_Full	4.454	4.740	PASS
N71	15	5	H	695.5	CP-64QAM	Outer_Full	4.421	4.620	PASS
N71	15	5	H	695.5	CP-256QAM	Outer_Full	4.47	4.800	PASS
N71	15	5	H	695.5	DFT-PI/2BPSK	Outer_Full	4.387	4.610	PASS
N71	15	5	H	695.5	DFT-QPSK	Outer_Full	4.341	4.610	PASS
N71	15	5	H	695.5	DFT-16QAM	Outer_Full	4.498	4.860	PASS
N71	15	5	H	695.5	DFT-64QAM	Outer_Full	4.562	5.040	PASS
N71	15	5	H	695.5	DFT-256QAM	Outer_Full	4.461	4.680	PASS

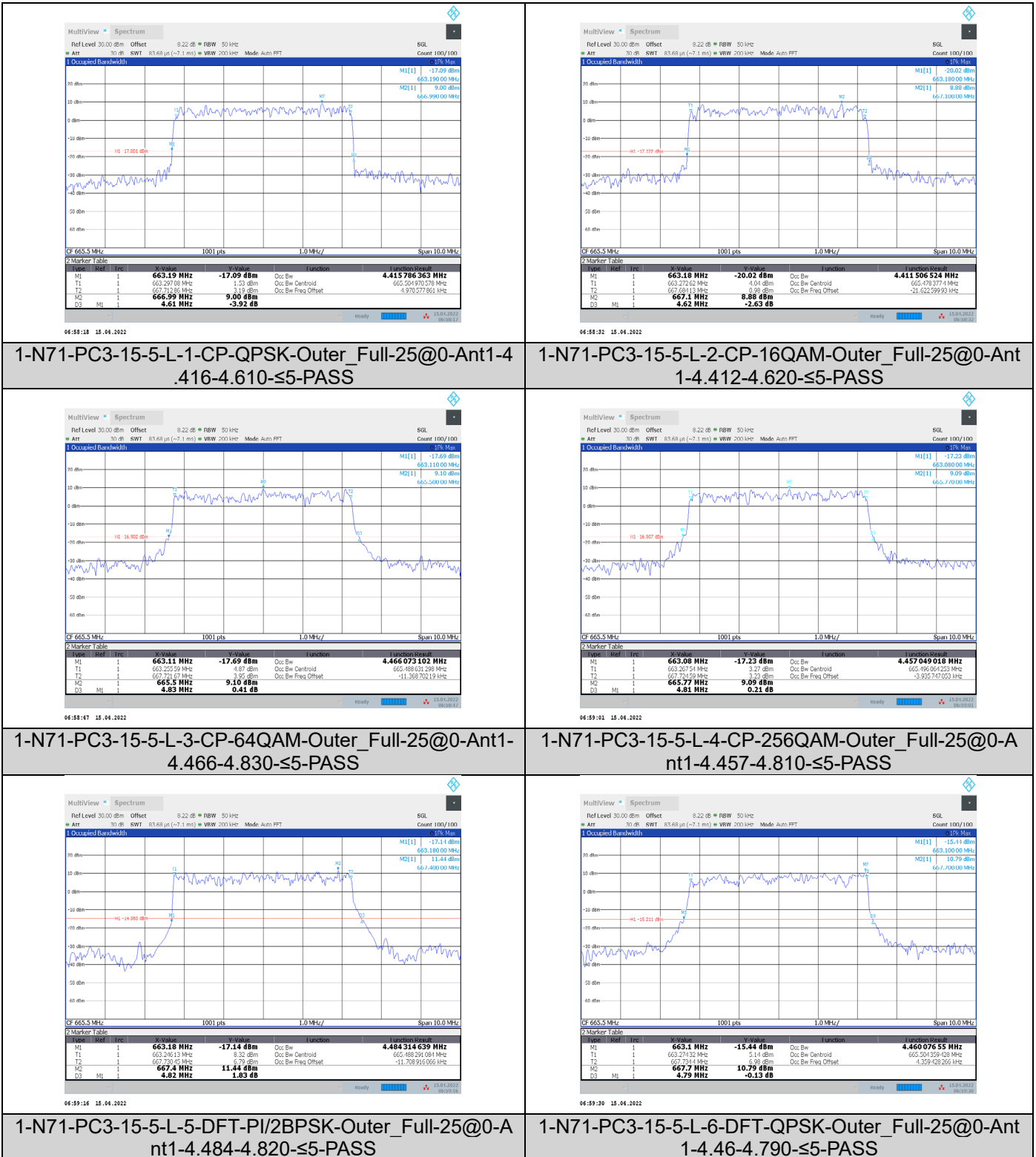
NR Band	SCS [kHz]	BW [MHz]	Channel	Freq [Mhz]	Modulation	RB config	Occupied Bandwidth [MHz]	Emission Bandwidth [MHz]	Verdict
N71	15	10	L	668.0	CP-QPSK	Outer_Full	8.885	9.420	PASS
N71	15	10	L	668.0	CP-16QAM	Outer_Full	9.177	9.600	PASS
N71	15	10	L	668.0	CP-64QAM	Outer_Full	9.203	9.860	PASS
N71	15	10	L	668.0	CP-256QAM	Outer_Full	9.28	9.740	PASS
N71	15	10	L	668.0	DFT-PI/2BPSK	Outer_Full	8.839	9.220	PASS
N71	15	10	L	668.0	DFT-QPSK	Outer_Full	8.917	9.540	PASS
N71	15	10	L	668.0	DFT-16QAM	Outer_Full	8.86	9.320	PASS
N71	15	10	L	668.0	DFT-64QAM	Outer_Full	8.728	9.300	PASS
N71	15	10	L	668.0	DFT-256QAM	Outer_Full	8.922	9.460	PASS
N71	15	10	M	680.5	CP-QPSK	Outer_Full	8.912	9.300	PASS
N71	15	10	M	680.5	CP-16QAM	Outer_Full	9.256	9.640	PASS
N71	15	10	M	680.5	CP-64QAM	Outer_Full	9.231	9.980	PASS
N71	15	10	M	680.5	CP-256QAM	Outer_Full	9.263	9.700	PASS
N71	15	10	M	680.5	DFT-PI/2BPSK	Outer_Full	8.919	9.520	PASS
N71	15	10	M	680.5	DFT-QPSK	Outer_Full	8.931	9.300	PASS
N71	15	10	M	680.5	DFT-16QAM	Outer_Full	8.814	9.320	PASS
N71	15	10	M	680.5	DFT-64QAM	Outer_Full	8.846	9.540	PASS
N71	15	10	M	680.5	DFT-256QAM	Outer_Full	8.951	9.400	PASS
N71	15	10	H	693.0	CP-QPSK	Outer_Full	8.889	9.300	PASS
N71	15	10	H	693.0	CP-16QAM	Outer_Full	9.282	9.740	PASS
N71	15	10	H	693.0	CP-64QAM	Outer_Full	9.212	9.620	PASS
N71	15	10	H	693.0	CP-256QAM	Outer_Full	9.253	9.800	PASS
N71	15	10	H	693.0	DFT-PI/2BPSK	Outer_Full	8.921	9.340	PASS
N71	15	10	H	693.0	DFT-QPSK	Outer_Full	8.917	9.460	PASS
N71	15	10	H	693.0	DFT-16QAM	Outer_Full	8.884	9.240	PASS
N71	15	10	H	693.0	DFT-64QAM	Outer_Full	8.882	9.320	PASS
N71	15	10	H	693.0	DFT-256QAM	Outer_Full	8.914	9.340	PASS

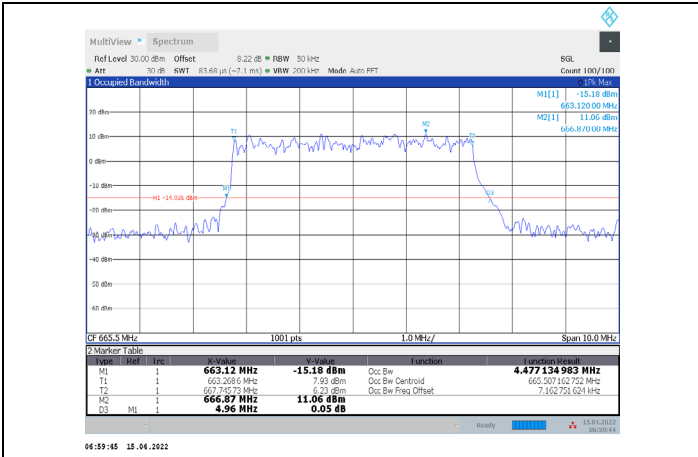
NR Band	SCS [kHz]	BW [MHz]	Channel	Freq [Mhz]	Modulation	RB config	Occupied Bandwidth [MHz]	Emission Bandwidth [MHz]	Verdict
N71	15	15	L	670.5	CP-QPSK	Outer_Full	13.305	14.010	PASS
N71	15	15	L	670.5	CP-16QAM	Outer_Full	14.015	14.790	PASS
N71	15	15	L	670.5	CP-64QAM	Outer_Full	14.053	14.700	PASS
N71	15	15	L	670.5	CP-256QAM	Outer_Full	14.098	14.910	PASS
N71	15	15	L	670.5	DFT-PI/2BPSK	Outer_Full	13.35	14.250	PASS
N71	15	15	L	670.5	DFT-QPSK	Outer_Full	13.401	14.010	PASS
N71	15	15	L	670.5	DFT-16QAM	Outer_Full	13.388	14.310	PASS
N71	15	15	L	670.5	DFT-64QAM	Outer_Full	13.342	14.250	PASS
N71	15	15	L	670.5	DFT-256QAM	Outer_Full	13.372	14.160	PASS
N71	15	15	M	680.5	CP-QPSK	Outer_Full	13.334	13.980	PASS
N71	15	15	M	680.5	CP-16QAM	Outer_Full	14.024	14.700	PASS
N71	15	15	M	680.5	CP-64QAM	Outer_Full	14.059	14.700	PASS
N71	15	15	M	680.5	CP-256QAM	Outer_Full	14.054	14.700	PASS
N71	15	15	M	680.5	DFT-PI/2BPSK	Outer_Full	13.397	14.040	PASS
N71	15	15	M	680.5	DFT-QPSK	Outer_Full	13.455	14.130	PASS
N71	15	15	M	680.5	DFT-16QAM	Outer_Full	13.401	13.980	PASS
N71	15	15	M	680.5	DFT-64QAM	Outer_Full	13.295	14.190	PASS
N71	15	15	M	680.5	DFT-256QAM	Outer_Full	13.437	14.040	PASS
N71	15	15	H	690.5	CP-QPSK	Outer_Full	13.293	14.160	PASS
N71	15	15	H	690.5	CP-16QAM	Outer_Full	14.024	14.730	PASS
N71	15	15	H	690.5	CP-64QAM	Outer_Full	14.123	14.730	PASS
N71	15	15	H	690.5	CP-256QAM	Outer_Full	14.103	14.700	PASS
N71	15	15	H	690.5	DFT-PI/2BPSK	Outer_Full	13.469	14.130	PASS
N71	15	15	H	690.5	DFT-QPSK	Outer_Full	13.344	13.980	PASS
N71	15	15	H	690.5	DFT-16QAM	Outer_Full	13.376	14.250	PASS
N71	15	15	H	690.5	DFT-64QAM	Outer_Full	13.339	14.070	PASS
N71	15	15	H	690.5	DFT-256QAM	Outer_Full	13.439	14.010	PASS

NR Band	SCS [kHz]	BW [MHz]	Channel	Freq [Mhz]	Modulation	RB config	Occupied Bandwidth [MHz]	Emission Bandwidth [MHz]	Verdict
N71	15	20	L	673.0	CP-QPSK	Outer_Full	17.756	18.600	PASS
N71	15	20	L	673.0	CP-16QAM	Outer_Full	18.867	19.600	PASS
N71	15	20	L	673.0	CP-64QAM	Outer_Full	18.611	19.560	PASS
N71	15	20	L	673.0	CP-256QAM	Outer_Full	18.803	21.640	PASS
N71	15	20	L	673.0	DFT-PI/2BPSK	Outer_Full	17.822	18.520	PASS
N71	15	20	L	673.0	DFT-QPSK	Outer_Full	17.701	18.640	PASS
N71	15	20	L	673.0	DFT-16QAM	Outer_Full	17.771	18.600	PASS
N71	15	20	L	673.0	DFT-64QAM	Outer_Full	17.629	18.480	PASS
N71	15	20	L	673.0	DFT-256QAM	Outer_Full	17.854	18.520	PASS
N71	15	20	M	680.5	CP-QPSK	Outer_Full	17.901	18.600	PASS
N71	15	20	M	680.5	CP-16QAM	Outer_Full	18.856	19.560	PASS
N71	15	20	M	680.5	CP-64QAM	Outer_Full	18.848	19.560	PASS
N71	15	20	M	680.5	CP-256QAM	Outer_Full	18.799	19.600	PASS
N71	15	20	M	680.5	DFT-PI/2BPSK	Outer_Full	17.839	18.480	PASS
N71	15	20	M	680.5	DFT-QPSK	Outer_Full	17.866	18.600	PASS
N71	15	20	M	680.5	DFT-16QAM	Outer_Full	17.805	18.560	PASS
N71	15	20	M	680.5	DFT-64QAM	Outer_Full	17.792	18.600	PASS
N71	15	20	M	680.5	DFT-256QAM	Outer_Full	17.844	18.480	PASS
N71	15	20	H	688.0	CP-QPSK	Outer_Full	17.805	18.520	PASS
N71	15	20	H	688.0	CP-16QAM	Outer_Full	18.81	19.800	PASS
N71	15	20	H	688.0	CP-64QAM	Outer_Full	18.839	21.880	PASS
N71	15	20	H	688.0	CP-256QAM	Outer_Full	18.837	19.720	PASS
N71	15	20	H	688.0	DFT-PI/2BPSK	Outer_Full	17.863	18.840	PASS
N71	15	20	H	688.0	DFT-QPSK	Outer_Full	17.893	18.480	PASS
N71	15	20	H	688.0	DFT-16QAM	Outer_Full	17.747	18.520	PASS
N71	15	20	H	688.0	DFT-64QAM	Outer_Full	17.755	18.800	PASS
N71	15	20	H	688.0	DFT-256QAM	Outer_Full	17.86	18.640	PASS

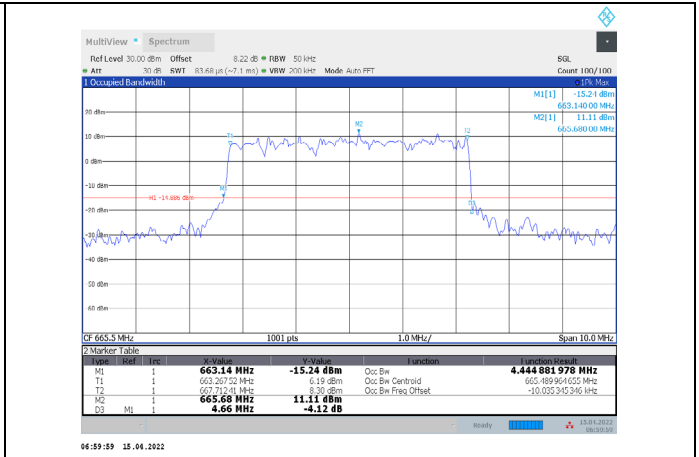
## 4.2 TEST PLOTS

### 4.2.1 CHANNEL BANDWIDTH=5MHZ

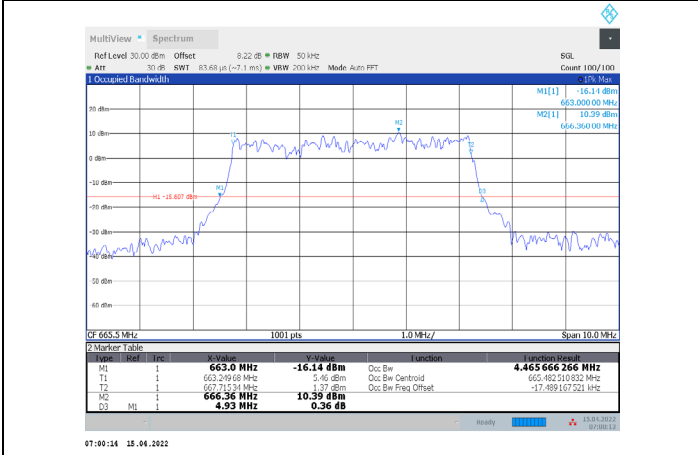




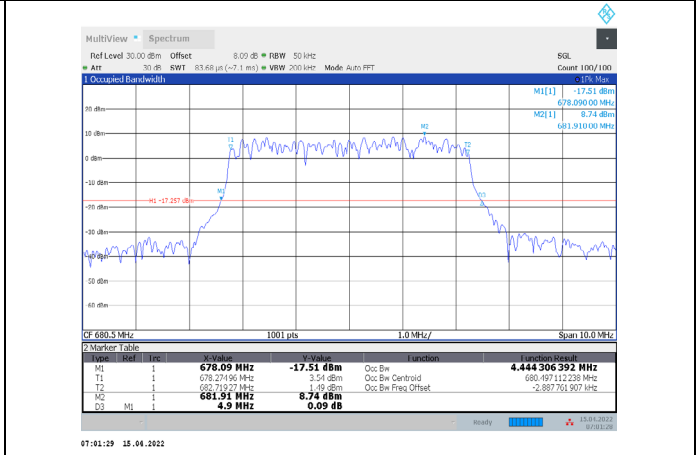
1-N71-PC3-15-5-L-7-DFT-16QAM-Outer\_Full-25@0-Ant  
1-4.477-4.960-≤5-PASS



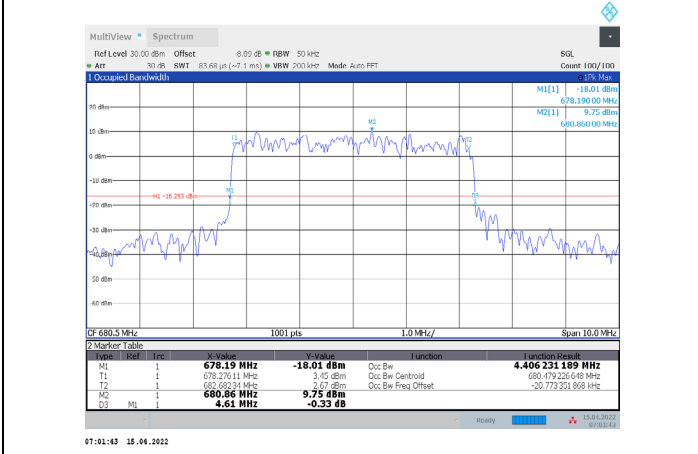
1-N71-PC3-15-5-L-8-DFT-64QAM-Outer\_Full-25@0-An  
t1-4.445-4.660-≤5-PASS



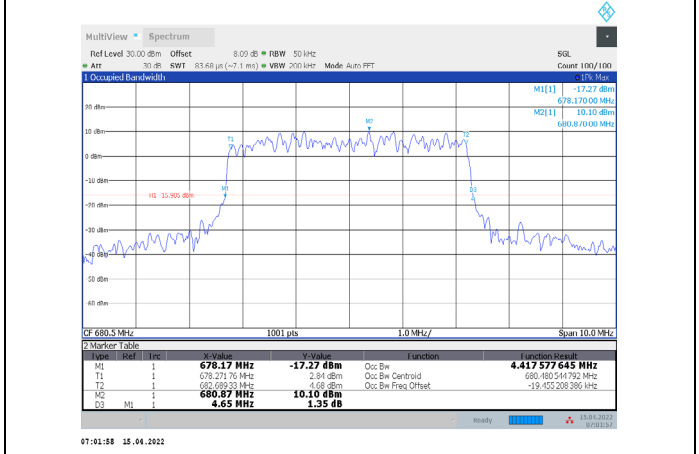
1-N71-PC3-15-5-L-9-DFT-256QAM-Outer\_Full-25@0-A  
nt1-4.466-4.930-≤5-PASS



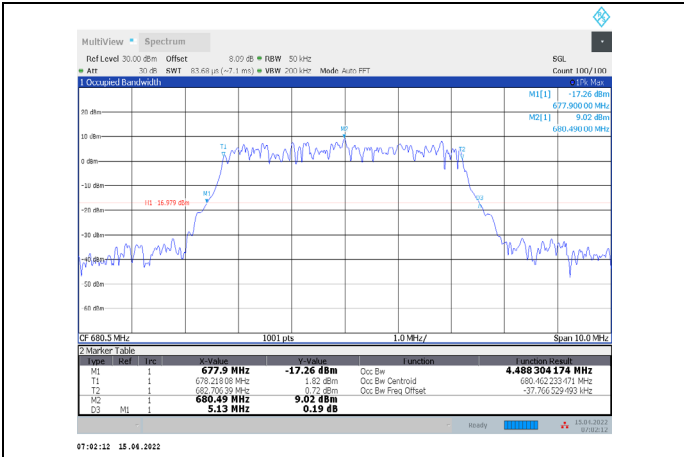
1-N71-PC3-15-5-M-1-CP-QPSK-Outer\_Full-25@0-Ant1  
-4.444-4.900-≤5-PASS



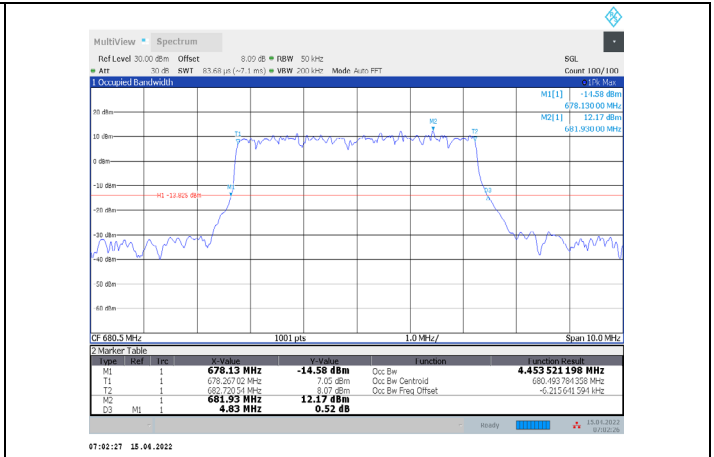
1-N71-PC3-15-5-M-2-CP-16QAM-Outer\_Full-25@0-Ant  
1-4.406-4.610-≤5-PASS



1-N71-PC3-15-5-M-3-CP-64QAM-Outer\_Full-25@0-Ant  
1-4.418-4.650-≤5-PASS



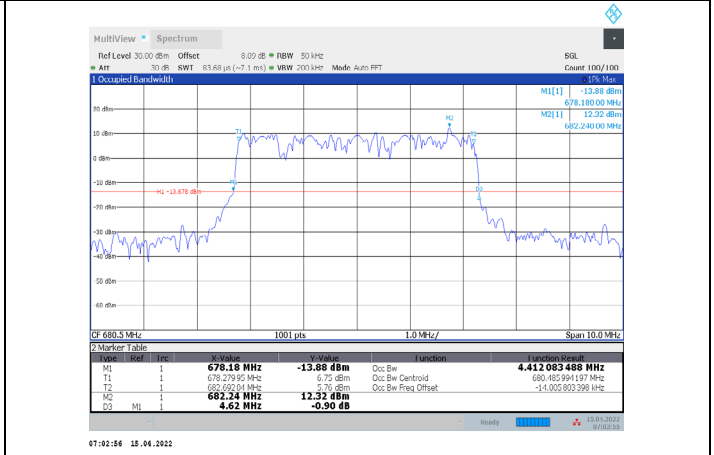
1-N71-PC3-15-5-M-4-CP-256QAM-Outer\_Full-25@0-A  
nt1-4.488-5.130-≤5-PASS



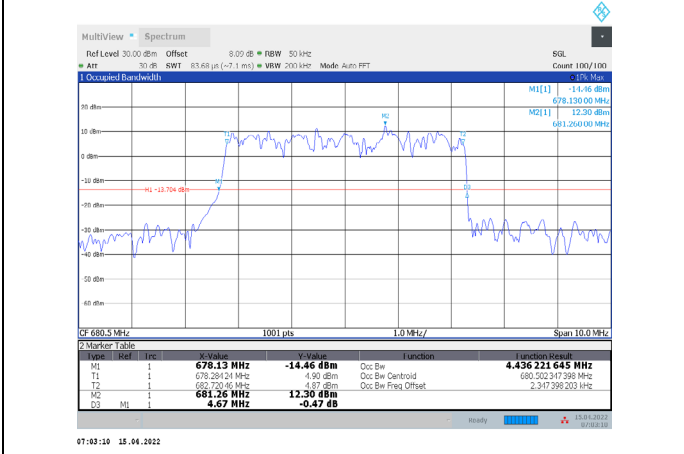
1-N71-PC3-15-5-M-5-DFT-PI/2BPSK-Outer\_Full-25@0-A  
Ant1-4.454-4.830-≤5-PASS



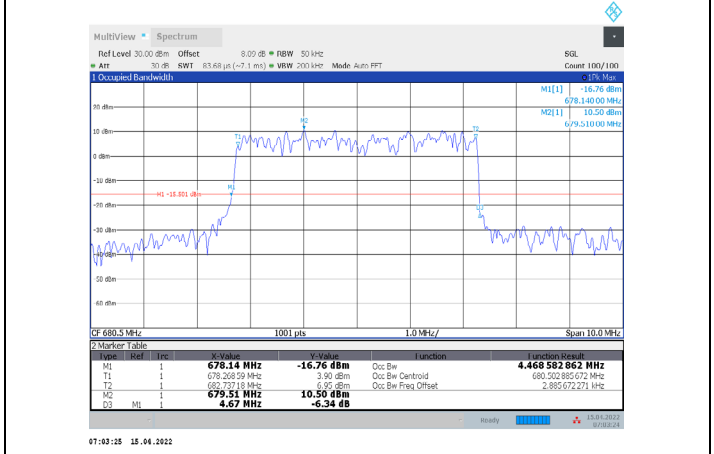
1-N71-PC3-15-5-M-6-DFT-QPSK-Outer\_Full-25@0-A  
t1-4.464-5.070-≤5-PASS



1-N71-PC3-15-5-M-7-DFT-16QAM-Outer\_Full-25@0-A  
nt1-4.412-4.620-≤5-PASS

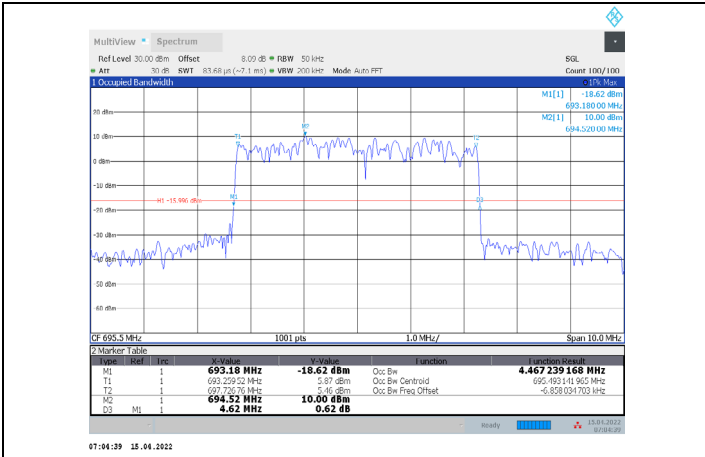


1-N71-PC3-15-5-M-8-DFT-64QAM-Outer\_Full-25@0-A  
nt1-4.436-4.670-≤5-PASS

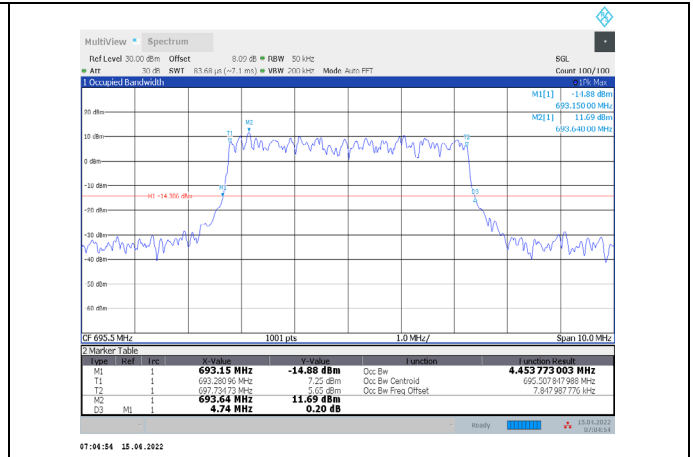


1-N71-PC3-15-5-M-9-DFT-256QAM-Outer\_Full-25@0-A  
nt1-4.469-4.670-≤5-PASS

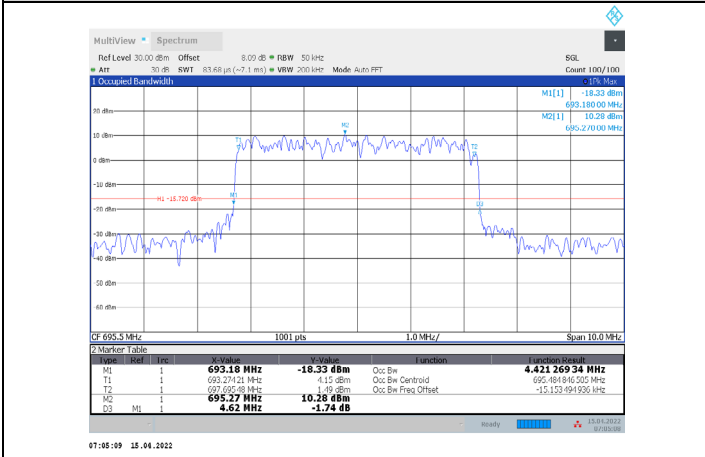




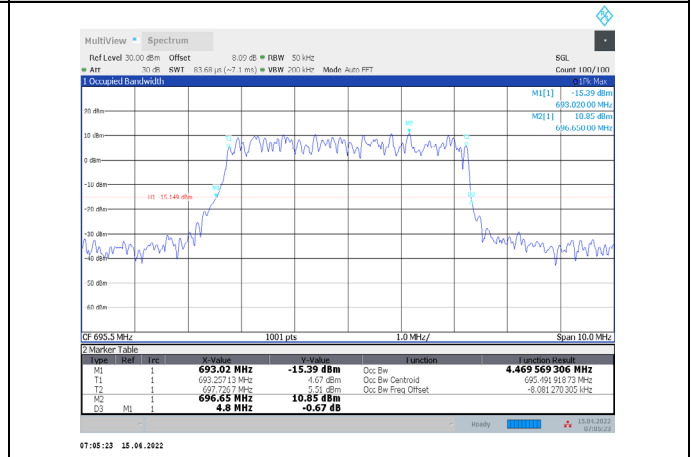
1-N71-PC3-15-5-H-1-CP-QPSK-Outer\_Full-25@0-Ant1-4.467-4.620-≤5-PASS



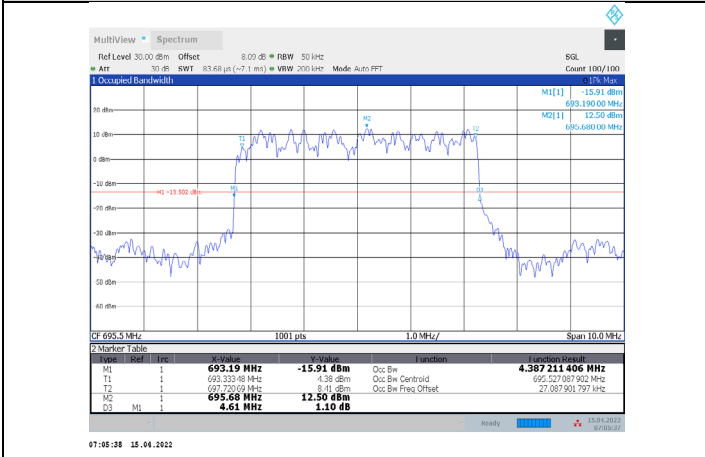
1-N71-PC3-15-5-H-2-CP-16QAM-Outer\_Full-25@0-An t1-4.454-4.740-≤5-PASS



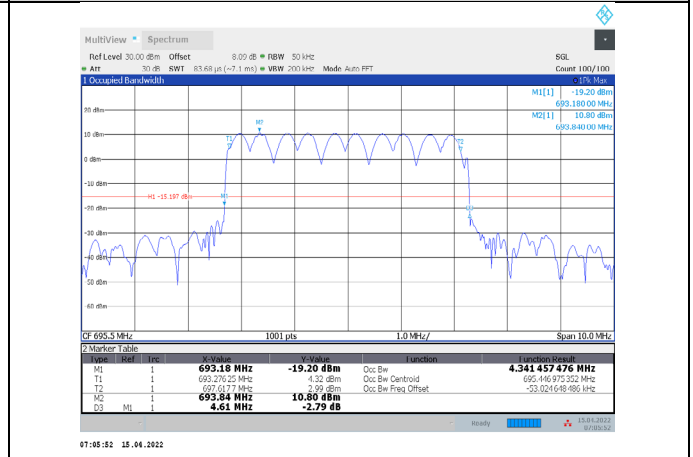
1-N71-PC3-15-5-H-3-CP-64QAM-Outer\_Full-25@0-Ant1-4.421-4.620-≤5-PASS



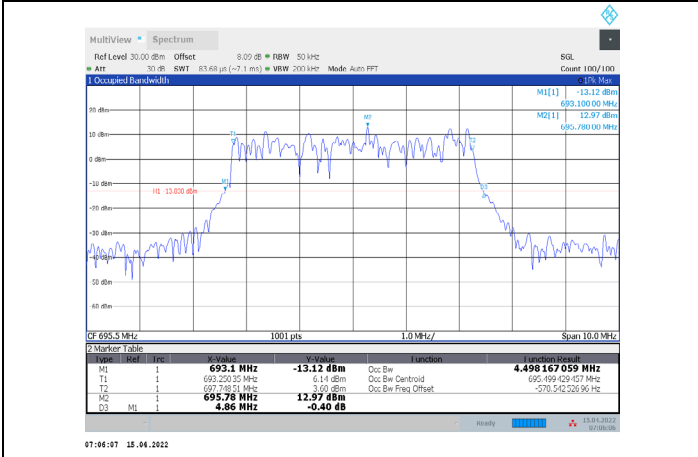
1-N71-PC3-15-5-H-4-CP-256QAM-Outer\_Full-25@0-A nt1-4.47-4.800-≤5-PASS



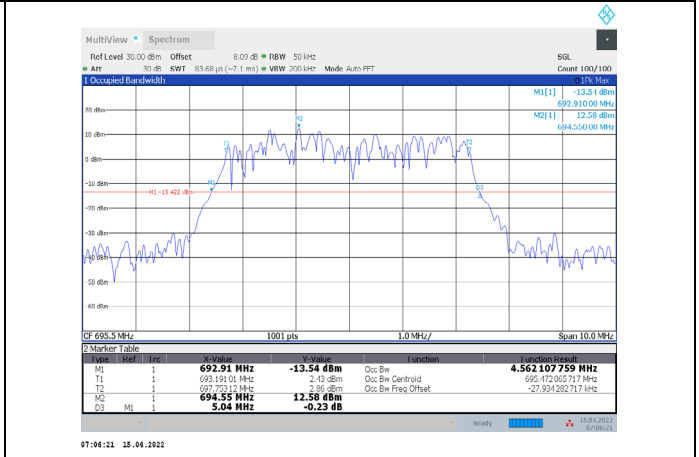
1-N71-PC3-15-5-H-5-DFT-PI/2BPSK-Outer\_Full-25@0-A nt1-4.387-4.610-≤5-PASS



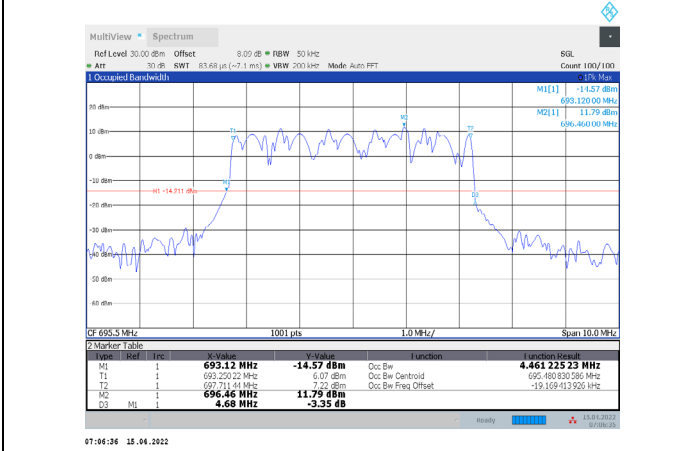
1-N71-PC3-15-5-H-6-DFT-QPSK-Outer\_Full-25@0-An t1-4.341-4.610-≤5-PASS



1-N71-PC3-15-5-H-7-DFT-16QAM-Outer\_Full-25@0-Ant  
1-4.498-4.860-≤5-PASS



1-N71-PC3-15-5-H-8-DFT-64QAM-Outer\_Full-25@0-A  
nt1-4.562-5.040-≤5-PASS

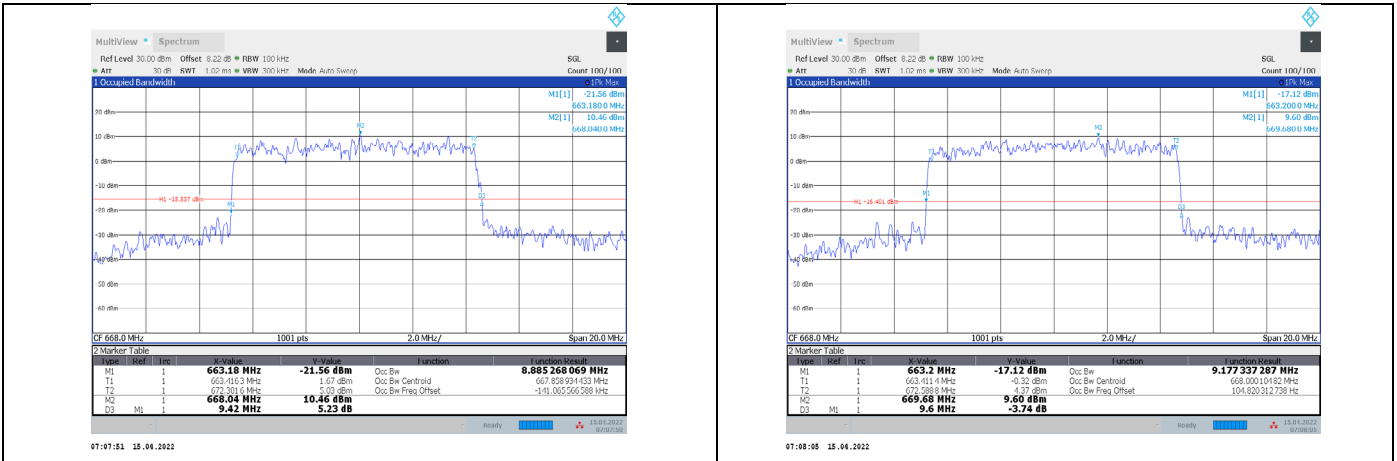


1-N71-PC3-15-5-H-9-DFT-256QAM-Outer\_Full-25@0-A  
nt1-4.461-4.680-≤5-PASS



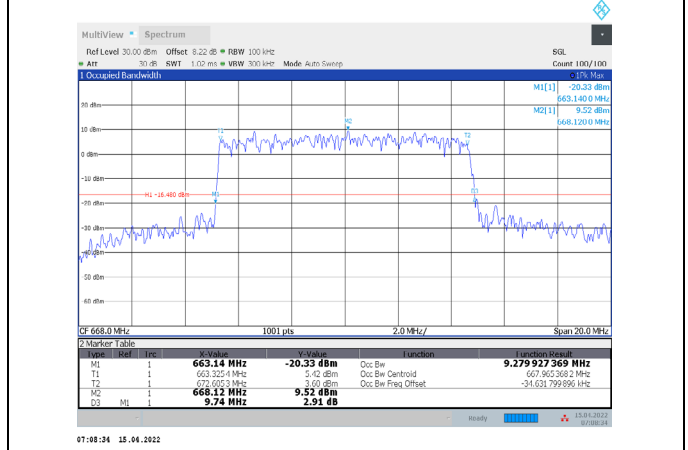
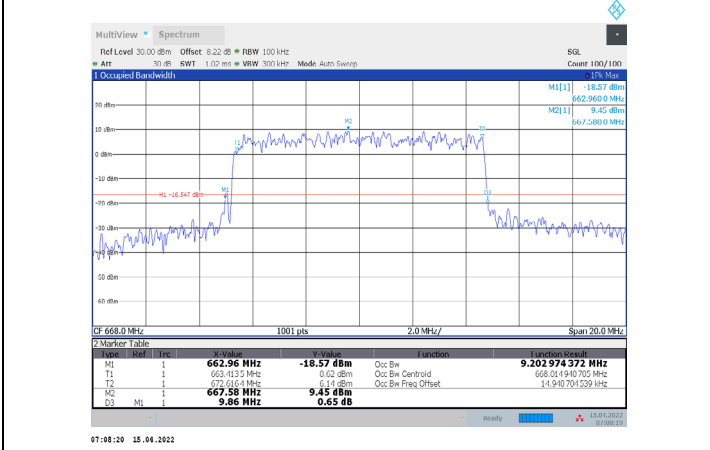
-

## 4.2.2 CHANNEL BANDWIDTH=10MHZ



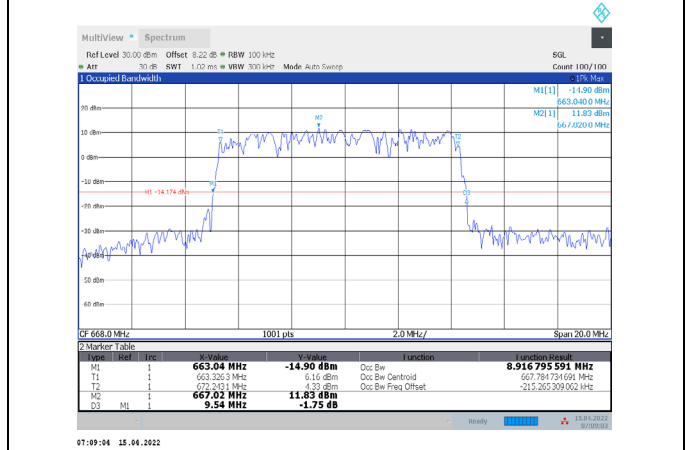
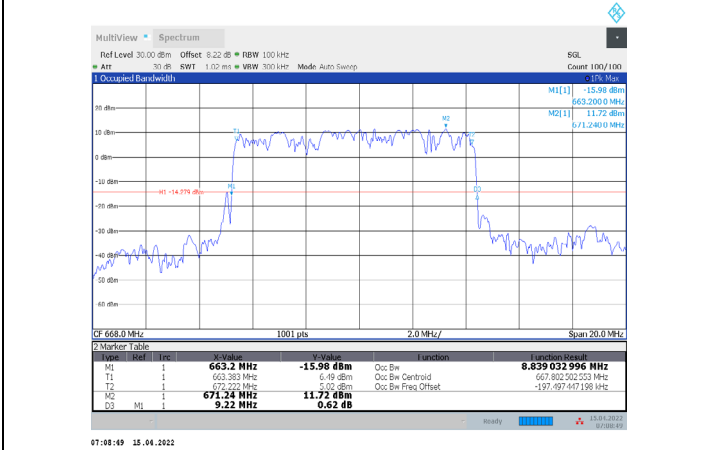
1-N71-PC3-15-10-L-1-CP-QPSK-Outer\_Full-50@0-Ant1-8.885-9.420-≤10-PASS

1-N71-PC3-15-10-L-2-CP-16QAM-Outer\_Full-52@0-Ant1-9.177-9.600-≤10-PASS



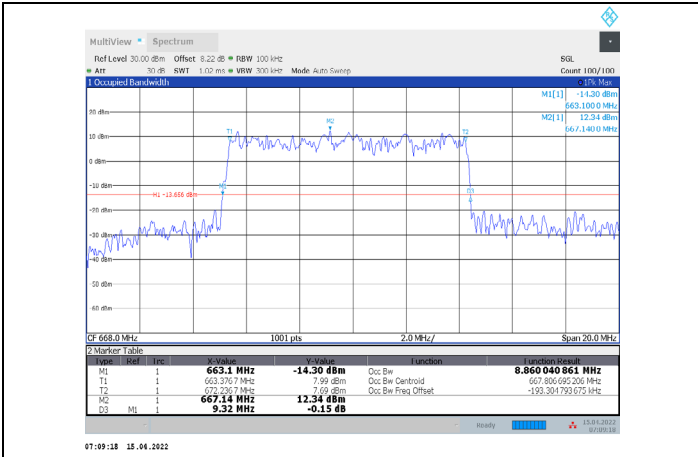
1-N71-PC3-15-10-L-3-CP-64QAM-Outer\_Full-52@0-Ant1-9.203-9.860-≤10-PASS

1-N71-PC3-15-10-L-4-CP-256QAM-Outer\_Full-52@0-Ant1-9.28-9.740-≤10-PASS

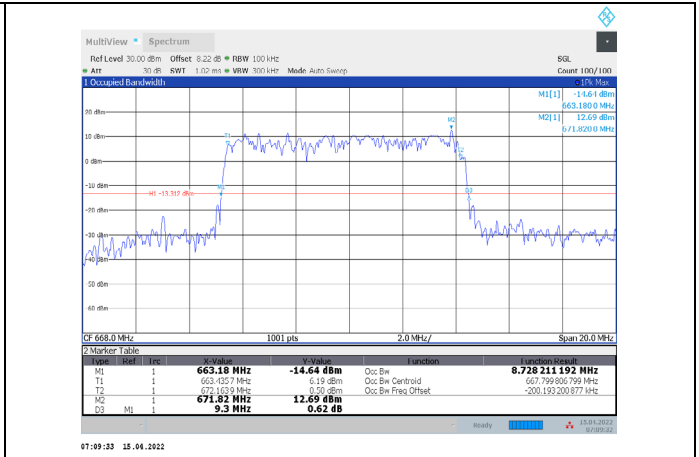


1-N71-PC3-15-10-L-5-DFT-PI/2BPSK-Outer\_Full-50@0-Ant1-8.839-9.220-≤10-PASS

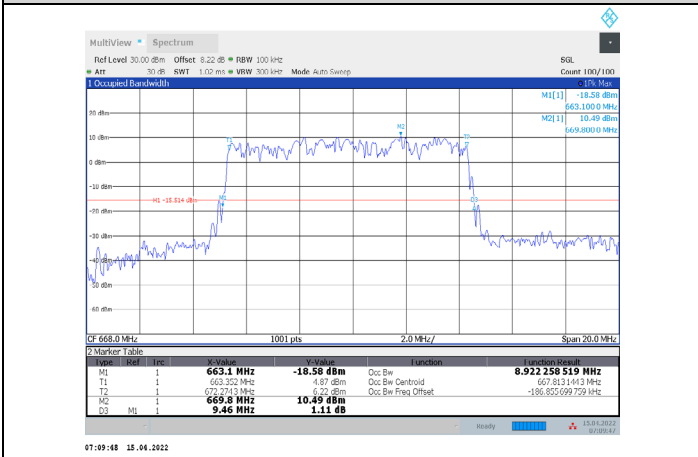
1-N71-PC3-15-10-L-6-DFT-QPSK-Outer\_Full-50@0-Ant1-8.917-9.540-≤10-PASS



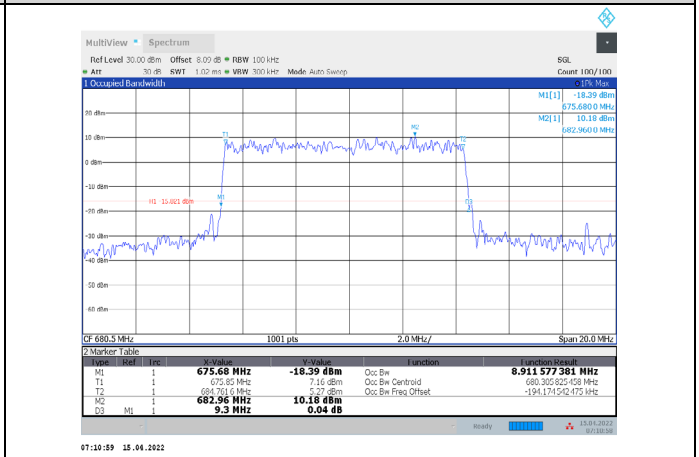
1-N71-PC3-15-10-L-7-DFT-16QAM-Outer\_Full-50@0-A  
nt1-8.86-9.320-≤10-PASS



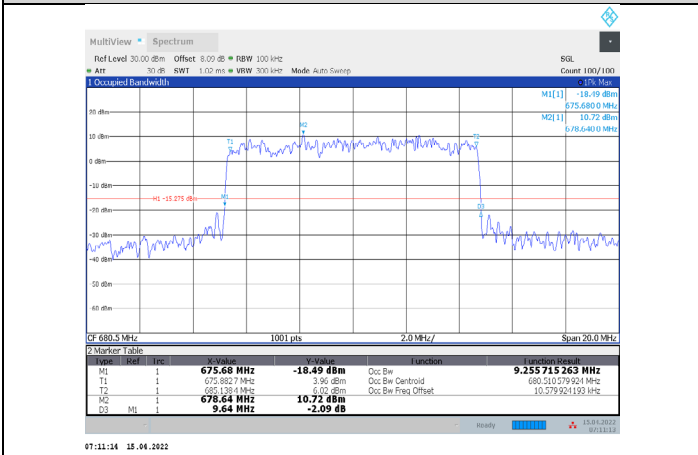
1-N71-PC3-15-10-L-8-DFT-64QAM-Outer\_Full-50@0-A  
nt1-8.728-9.300-≤10-PASS



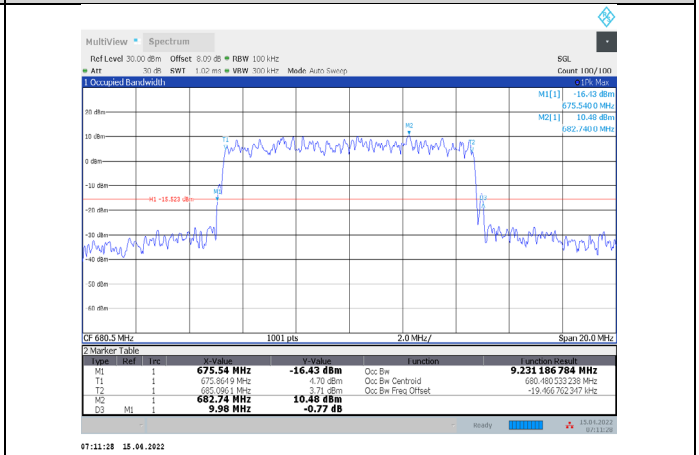
1-N71-PC3-15-10-L-9-DFT-256QAM-Outer\_Full-50@0-A  
Ant1-8.922-9.460-≤10-PASS



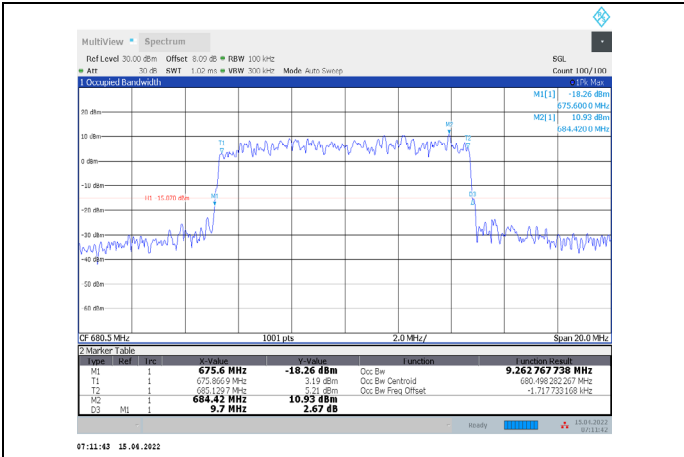
1-N71-PC3-15-10-M-1-CP-QPSK-Outer\_Full-50@0-Ant  
1-8.912-9.300-≤10-PASS



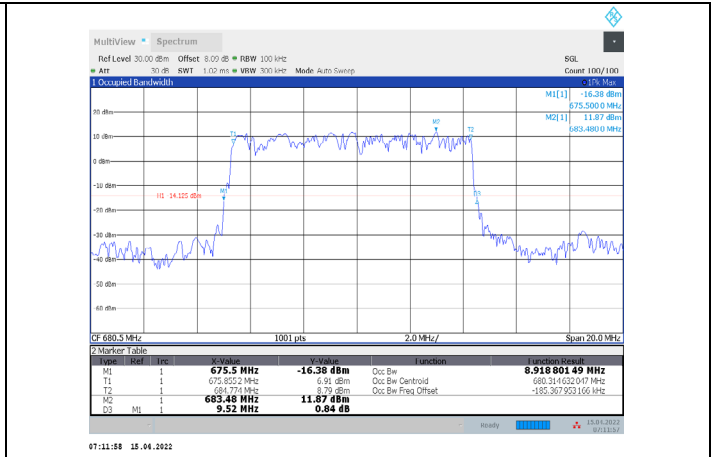
1-N71-PC3-15-10-M-2-CP-16QAM-Outer\_Full-52@0-Ant  
t1-9.256-9.640-≤10-PASS



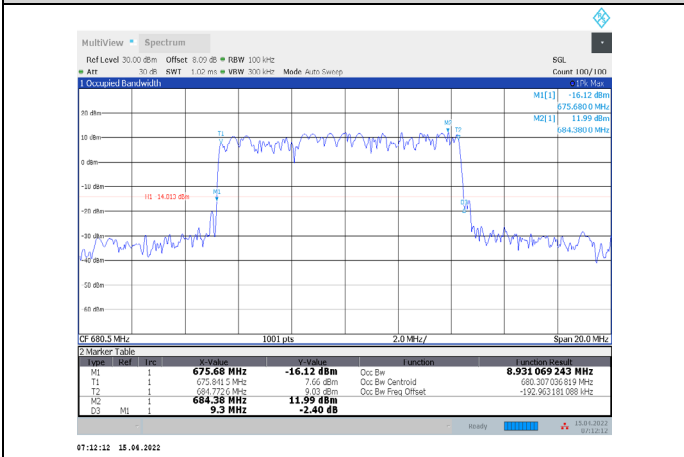
1-N71-PC3-15-10-M-3-CP-64QAM-Outer\_Full-52@0-A  
nt1-9.231-9.980-≤10-PASS



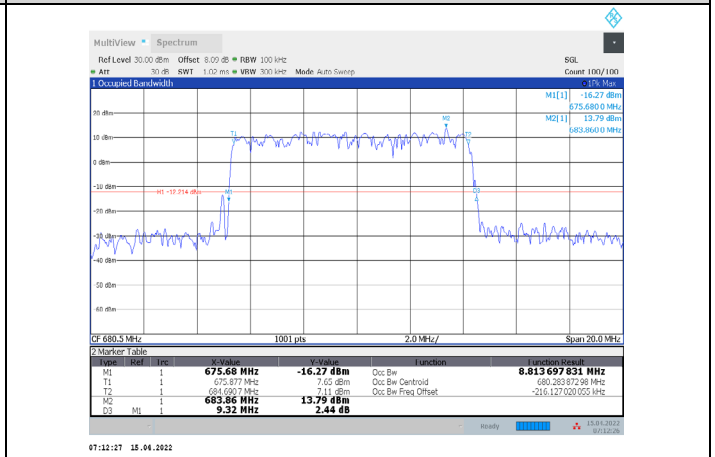
1-N71-PC3-15-10-M-4-CP-256QAM-Outer\_Full-52@0-Ant1-9.263-9.700-≤10-PASS



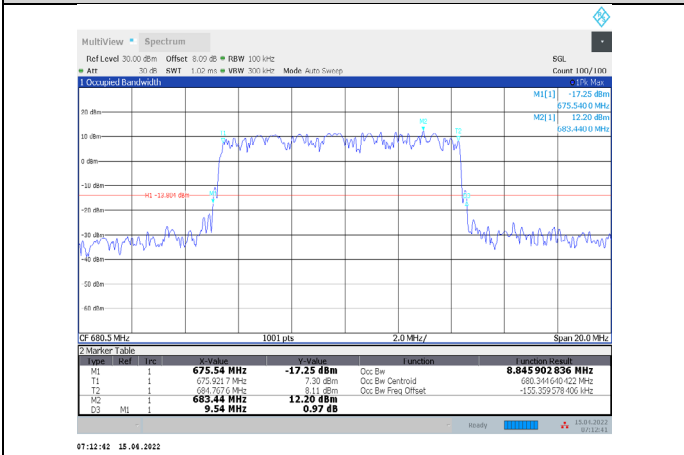
1-N71-PC3-15-10-M-5-DFT-PI/2BPSK-Outer\_Full-50@0-Ant1-8.919-9.520-≤10-PASS



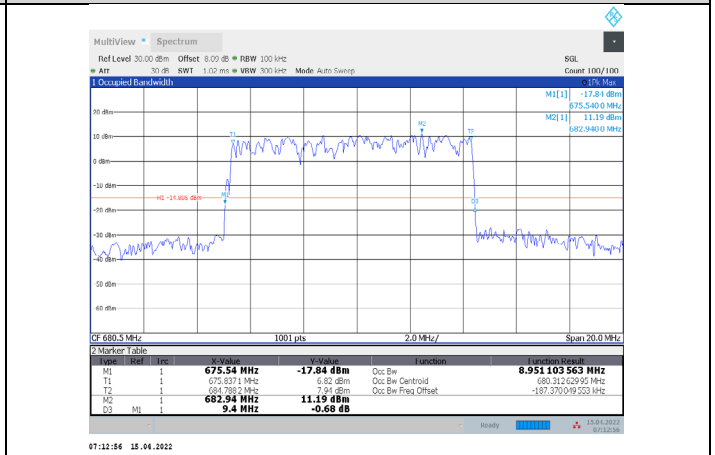
1-N71-PC3-15-10-M-6-DFT-QPSK-Outer\_Full-50@0-Ant1-8.931-9.300-≤10-PASS



1-N71-PC3-15-10-M-7-DFT-16QAM-Outer\_Full-50@0-Ant1-8.814-9.320-≤10-PASS



1-N71-PC3-15-10-M-8-DFT-64QAM-Outer\_Full-50@0-Ant1-8.846-9.540-≤10-PASS



1-N71-PC3-15-10-M-9-DFT-256QAM-Outer\_Full-50@0-Ant1-8.951-9.400-≤10-PASS