

Appendix for 5G NR n2

Model: LGE-NX9

BTL-FCCP-6-2203G019

CONTENT

1	Appendix A: Effective (Isotropic) Radiated Power Output Data for SA.....	3
1.1	Test Result.....	3
2	Appendix B: Peak-to-Average Ratio for SA.....	6
2.1	Test Result.....	6
3	Appendix C: Modulation characteristics for SA.....	7
3.1	Test Result.....	7
3.2	Test Plots.....	8
3.2.1	Channel bandwidth=20MHz.....	8
4	Appendix D: 26dB Bandwidth and Occupied Bandwidth for SA.....	10
4.1	Test Result.....	10
4.2	Test Plots.....	13
4.2.1	Channel bandwidth=5MHz.....	13
4.2.2	Channel bandwidth=10MHz.....	18
4.2.3	Channel bandwidth=15MHz.....	22
4.2.4	Channel bandwidth=20MHz.....	28
5	Appendix E: Band Edge for SA.....	33
5.1	Test Result.....	33
5.2	Test Plots.....	36
5.2.1	Channel bandwidth=5MHz.....	36
5.2.2	Channel bandwidth=20MHz.....	45
6	Appendix F: Conducted Spurious Emission for SA.....	54
6.1	Test Result.....	54
6.2	Test Plots.....	55
6.2.1	Channel bandwidth=5MHz.....	55
6.2.2	Channel bandwidth=15MHz.....	64
6.2.3	Channel bandwidth=20MHz.....	73
7	Appendix G: Frequency Stability for SA.....	82
7.1	Test Result.....	82
7.1.1	Frequency Error VS. Voltage.....	82
7.1.2	Frequency Error VS. Temperature.....	82

1 Appendix A: Effective (Isotropic) Radiated Power Output Data for SA

1.1 Test Result

NR Band	SCS [kHz]	BW [MHz]	Channel	Freq [MHz]	Modulation	RB Config	Power [dBm]	EIRP [dBm]	Limit [dBm]	Verdict
N2	15	5	L	1852.5	DFT-PI/2BPSK	Edge_1RB_Left	23.33	20.13	33.00	PASS
N2	15	5	L	1852.5	DFT-PI/2BPSK	Edge_1RB_Right	23.34	20.14	33.00	PASS
N2	15	5	L	1852.5	DFT-PI/2BPSK	Inner_Full	23.27	20.07	33.00	PASS
N2	15	5	L	1852.5	DFT-PI/2BPSK	Outer_Full	23.34	20.14	33.00	PASS
N2	15	5	L	1852.5	DFT-QPSK	Inner_1RB_Left	23.32	20.12	33.00	PASS
N2	15	5	L	1852.5	DFT-QPSK	Inner_1RB_Right	23.37	20.17	33.00	PASS
N2	15	5	L	1852.5	DFT-QPSK	Outer_Full	23.13	19.93	33.00	PASS
N2	15	5	L	1852.5	DFT-QPSK	Outer_Full	23.25	20.05	33.00	PASS
N2	15	5	L	1852.5	DFT-16QAM	Inner_Full	23.30	20.1	33.00	PASS
N2	15	5	L	1852.5	DFT-16QAM	Inner_1RB_Left	23.73	20.53	33.00	PASS
N2	15	5	L	1852.5	DFT-16QAM	Inner_1RB_Right	23.63	20.43	33.00	PASS
N2	15	5	L	1852.5	DFT-16QAM	Outer_Full	22.79	19.59	33.00	PASS
N2	15	5	M	1880	DFT-PI/2BPSK	Inner_1RB_Left	23.22	20.02	33.00	PASS
N2	15	5	M	1880	DFT-PI/2BPSK	Inner_1RB_Right	23.22	20.02	33.00	PASS
N2	15	5	M	1880	DFT-PI/2BPSK	Inner_Full	23.02	19.82	33.00	PASS
N2	15	5	M	1880	DFT-PI/2BPSK	Outer_Full	23.25	20.05	33.00	PASS
N2	15	5	M	1880	DFT-QPSK	Inner_1RB_Left	23.22	20.02	33.00	PASS
N2	15	5	M	1880	DFT-QPSK	Inner_1RB_Right	23.09	19.89	33.00	PASS
N2	15	5	M	1880	DFT-QPSK	Inner_Full	22.99	19.79	33.00	PASS
N2	15	5	M	1880	DFT-QPSK	Outer_Full	23.24	20.04	33.00	PASS
N2	15	5	M	1880	DFT-16QAM	Inner_Full	23.05	19.85	33.00	PASS
N2	15	5	M	1880	DFT-16QAM	Inner_1RB_Left	23.57	20.37	33.00	PASS
N2	15	5	M	1880	DFT-16QAM	Inner_1RB_Right	23.38	20.18	33.00	PASS
N2	15	5	M	1880	DFT-16QAM	Outer_Full	22.55	19.35	33.00	PASS
N2	15	5	H	1907.5	DFT-PI/2BPSK	Inner_1RB_Left	22.97	19.77	33.00	PASS
N2	15	5	H	1907.5	DFT-PI/2BPSK	Inner_1RB_Right	23.11	19.91	33.00	PASS
N2	15	5	H	1907.5	DFT-PI/2BPSK	Inner_Full	23.09	19.89	33.00	PASS
N2	15	5	H	1907.5	DFT-PI/2BPSK	Outer_Full	23.10	19.9	33.00	PASS
N2	15	5	H	1907.5	DFT-QPSK	Inner_1RB_Left	23.08	19.88	33.00	PASS
N2	15	5	H	1907.5	DFT-QPSK	Inner_1RB_Right	22.99	19.79	33.00	PASS
N2	15	5	H	1907.5	DFT-QPSK	Inner_Full	22.97	19.77	33.00	PASS
N2	15	5	H	1907.5	DFT-QPSK	Outer_Full	23.03	19.83	33.00	PASS
N2	15	5	H	1907.5	DFT-16QAM	Inner_Full	22.84	19.64	33.00	PASS
N2	15	5	H	1907.5	DFT-16QAM	Inner_1RB_Left	22.88	19.68	33.00	PASS
N2	15	5	H	1907.5	DFT-16QAM	Inner_1RB_Right	22.71	19.51	33.00	PASS
N2	15	5	H	1907.5	DFT-16QAM	Outer_Full	22.36	19.16	33.00	PASS
N2	15	15	L	1857.5	DFT-PI/2BPSK	Inner_1RB_Left	23.25	20.05	33.00	PASS
N2	15	15	L	1857.5	DFT-PI/2BPSK	Inner_1RB_Right	23.34	20.14	33.00	PASS

NR Band	SCS [kHz]	BW [MHz]	Channel	Freq [MHz]	Modulation	RB Config	Power [dBm]	EIRP [dBm]	Limit [dBm]	Verdict
N2	15	15	L	1857.5	DFT-PI/2BPSK	Inner_Full	23.30	20.1	33.00	PASS
N2	15	15	L	1857.5	DFT-PI/2BPSK	Outer_Full	23.47	20.27	33.00	PASS
N2	15	15	L	1857.5	DFT-QPSK	Inner_1RB_Left	23.35	20.15	33.00	PASS
N2	15	15	L	1857.5	DFT-QPSK	Inner_1RB_Right	23.25	20.05	33.00	PASS
N2	15	15	L	1857.5	DFT-QPSK	Inner_Full	23.31	20.11	33.00	PASS
N2	15	15	L	1857.5	DFT-QPSK	Outer_Full	23.40	20.2	33.00	PASS
N2	15	15	L	1857.5	DFT-16QAM	Inner_Full	23.36	20.16	33.00	PASS
N2	15	15	L	1857.5	DFT-16QAM	Inner_1RB_Left	23.63	20.43	33.00	PASS
N2	15	15	L	1857.5	DFT-16QAM	Inner_1RB_Right	23.51	20.31	33.00	PASS
N2	15	15	L	1857.5	DFT-16QAM	Outer_Full	22.87	19.67	33.00	PASS
N2	15	15	M	1880	DFT-PI/2BPSK	Inner_1RB_Left	23.17	19.97	33.00	PASS
N2	15	15	M	1880	DFT-PI/2BPSK	Inner_1RB_Right	23.24	20.04	33.00	PASS
N2	15	15	M	1880	DFT-PI/2BPSK	Inner_Full	23.16	19.96	33.00	PASS
N2	15	15	M	1880	DFT-PI/2BPSK	Outer_Full	23.26	20.06	33.00	PASS
N2	15	15	M	1880	DFT-QPSK	Inner_1RB_Left	23.18	19.98	33.00	PASS
N2	15	15	M	1880	DFT-QPSK	Inner_1RB_Right	23.24	20.04	33.00	PASS
N2	15	15	M	1880	DFT-QPSK	Inner_Full	23.10	19.9	33.00	PASS
N2	15	15	M	1880	DFT-QPSK	Outer_Full	23.25	20.05	33.00	PASS
N2	15	15	M	1880	DFT-16QAM	Inner_Full	23.24	20.04	33.00	PASS
N2	15	15	M	1880	DFT-16QAM	Inner_1RB_Left	23.49	20.29	33.00	PASS
N2	15	15	M	1880	DFT-16QAM	Inner_1RB_Right	23.34	20.14	33.00	PASS
N2	15	15	M	1880	DFT-16QAM	Outer_Full	22.71	19.51	33.00	PASS
N2	15	15	H	1902.5	DFT-PI/2BPSK	Inner_1RB_Left	23.08	19.88	33.00	PASS
N2	15	15	H	1902.5	DFT-PI/2BPSK	Inner_1RB_Right	23.10	19.9	33.00	PASS
N2	15	15	H	1902.5	DFT-PI/2BPSK	Inner_Full	23.08	19.88	33.00	PASS
N2	15	15	H	1902.5	DFT-PI/2BPSK	Outer_Full	23.11	19.91	33.00	PASS
N2	15	15	H	1902.5	DFT-QPSK	Inner_1RB_Left	23.11	19.91	33.00	PASS
N2	15	15	H	1902.5	DFT-QPSK	Inner_1RB_Right	23.13	19.93	33.00	PASS
N2	15	15	H	1902.5	DFT-QPSK	Inner_Full	23.09	19.89	33.00	PASS
N2	15	15	H	1902.5	DFT-QPSK	Outer_Full	23.22	20.02	33.00	PASS
N2	15	15	H	1902.5	DFT-16QAM	Inner_Full	23.05	19.85	33.00	PASS
N2	15	15	H	1902.5	DFT-16QAM	Inner_1RB_Left	23.29	20.09	33.00	PASS
N2	15	15	H	1902.5	DFT-16QAM	Inner_1RB_Right	23.17	19.97	33.00	PASS
N2	15	15	H	1902.5	DFT-16QAM	Outer_Full	22.52	19.32	33.00	PASS
N2	15	20	L	1860	DFT-PI/2BPSK	Inner_1RB_Left	23.36	20.16	33.00	PASS
N2	15	20	L	1860	DFT-PI/2BPSK	Inner_1RB_Right	23.36	20.16	33.00	PASS
N2	15	20	L	1860	DFT-PI/2BPSK	Inner_Full	23.26	20.06	33.00	PASS
N2	15	20	L	1860	DFT-PI/2BPSK	Outer_Full	23.45	20.25	33.00	PASS
N2	15	20	L	1860	DFT-QPSK	Inner_1RB_Left	23.38	20.18	33.00	PASS
N2	15	20	L	1860	DFT-QPSK	Inner_1RB_Right	23.17	19.97	33.00	PASS

NR Band	SCS [kHz]	BW [MHz]	Channel	Freq [MHz]	Modulation	RB Config	Power [dBm]	EIRP [dBm]	Limit [dBm]	Verdict
N2	15	20	L	1860	DFT-QPSK	Inner_Full	23.22	20.02	33.00	PASS
N2	15	20	L	1860	DFT-QPSK	Outer_Full	23.38	20.18	33.00	PASS
N2	15	20	L	1860	DFT-16QAM	Inner_Full	23.40	20.2	33.00	PASS
N2	15	20	L	1860	DFT-16QAM	Inner_1RB_Left	23.65	20.45	33.00	PASS
N2	15	20	L	1860	DFT-16QAM	Inner_1RB_Right	23.57	20.37	33.00	PASS
N2	15	20	L	1860	DFT-16QAM	Outer_Full	22.89	19.69	33.00	PASS
N2	15	20	M	1880	DFT-PI/2BPSK	Inner_1RB_Left	23.19	19.99	33.00	PASS
N2	15	20	M	1880	DFT-PI/2BPSK	Inner_1RB_Right	23.20	20	33.00	PASS
N2	15	20	M	1880	DFT-PI/2BPSK	Inner_Full	23.07	19.87	33.00	PASS
N2	15	20	M	1880	DFT-PI/2BPSK	Outer_Full	23.20	20	33.00	PASS
N2	15	20	M	1880	DFT-QPSK	Inner_1RB_Left	23.19	19.99	33.00	PASS
N2	15	20	M	1880	DFT-QPSK	Inner_1RB_Right	23.17	19.97	33.00	PASS
N2	15	20	M	1880	DFT-QPSK	Inner_Full	23.10	19.9	33.00	PASS
N2	15	20	M	1880	DFT-QPSK	Outer_Full	23.30	20.1	33.00	PASS
N2	15	20	M	1880	DFT-16QAM	Inner_Full	23.29	20.09	33.00	PASS
N2	15	20	M	1880	DFT-16QAM	Inner_1RB_Left	23.52	20.32	33.00	PASS
N2	15	20	M	1880	DFT-16QAM	Inner_1RB_Right	23.32	20.12	33.00	PASS
N2	15	20	M	1880	DFT-16QAM	Outer_Full	22.70	19.5	33.00	PASS
N2	15	20	H	1900	DFT-PI/2BPSK	Inner_1RB_Left	23.13	19.93	33.00	PASS
N2	15	20	H	1900	DFT-PI/2BPSK	Inner_1RB_Right	23.13	19.93	33.00	PASS
N2	15	20	H	1900	DFT-PI/2BPSK	Inner_Full	23.00	19.8	33.00	PASS
N2	15	20	H	1900	DFT-PI/2BPSK	Outer_Full	23.14	19.94	33.00	PASS
N2	15	20	H	1900	DFT-QPSK	Inner_1RB_Left	23.05	19.85	33.00	PASS
N2	15	20	H	1900	DFT-QPSK	Inner_1RB_Right	22.93	19.73	33.00	PASS
N2	15	20	H	1900	DFT-QPSK	Inner_Full	22.99	19.79	33.00	PASS
N2	15	20	H	1900	DFT-QPSK	Outer_Full	23.17	19.97	33.00	PASS
N2	15	20	H	1900	DFT-16QAM	Inner_Full	23.08	19.88	33.00	PASS
N2	15	20	H	1900	DFT-16QAM	Inner_1RB_Left	23.30	20.1	33.00	PASS
N2	15	20	H	1900	DFT-16QAM	Inner_1RB_Right	23.20	20	33.00	PASS
N2	15	20	H	1900	DFT-16QAM	Outer_Full	22.58	19.38	33.00	PASS

2 Appendix B: Peak-to-Average Ratio for SA

2.1 Test Result

NR Band	SCS [kHz]	BW [MHz]	Channel	Freq [MHz]	Modulation	RB Config	Measured [dBm]	Limit [dBm]	Verdict
N2	15	5	M	1880	DFT-PI/2BPSK	Outer_Full	8.20	≤13	PASS
N2	15	5	M	1880	DFT-QPSK	Outer_Full	8.21	≤13	PASS
N2	15	5	M	1880	DFT-16QAM	Outer_Full	8.26	≤13	PASS
N2	15	5	M	1880	DFT-64QAM	Outer_Full	8.25	≤13	PASS
N2	15	5	M	1880	DFT-256QAM	Outer_Full	8.28	≤13	PASS
N2	15	5	M	1880	CP-QPSK	Outer_Full	8.18	≤13	PASS
N2	15	5	M	1880	CP-16QAM	Outer_Full	8.18	≤13	PASS
N2	15	5	M	1880	CP-64QAM	Outer_Full	8.23	≤13	PASS
N2	15	5	M	1880	CP-256QAM	Outer_Full	8.25	≤13	PASS
N2	15	15	M	1880	DFT-PI/2BPSK	Outer_Full	8.27	≤13	PASS
N2	15	15	M	1880	DFT-QPSK	Outer_Full	8.26	≤13	PASS
N2	15	15	M	1880	DFT-16QAM	Outer_Full	8.25	≤13	PASS
N2	15	15	M	1880	DFT-64QAM	Outer_Full	8.30	≤13	PASS
N2	15	15	M	1880	DFT-256QAM	Outer_Full	8.24	≤13	PASS
N2	15	15	M	1880	CP-QPSK	Outer_Full	8.27	≤13	PASS
N2	15	15	M	1880	CP-16QAM	Outer_Full	8.26	≤13	PASS
N2	15	15	M	1880	CP-64QAM	Outer_Full	8.23	≤13	PASS
N2	15	15	M	1880	CP-256QAM	Outer_Full	8.27	≤13	PASS
N2	15	20	M	1880	DFT-PI/2BPSK	Outer_Full	8.28	≤13	PASS
N2	15	20	M	1880	DFT-QPSK	Outer_Full	8.29	≤13	PASS
N2	15	20	M	1880	DFT-16QAM	Outer_Full	8.29	≤13	PASS
N2	15	20	M	1880	DFT-64QAM	Outer_Full	8.26	≤13	PASS
N2	15	20	M	1880	DFT-256QAM	Outer_Full	8.26	≤13	PASS
N2	15	20	M	1880	CP-QPSK	Outer_Full	8.31	≤13	PASS
N2	15	20	M	1880	CP-16QAM	Outer_Full	8.31	≤13	PASS
N2	15	20	M	1880	CP-64QAM	Outer_Full	8.25	≤13	PASS
N2	15	20	M	1880	CP-256QAM	Outer_Full	8.27	≤13	PASS

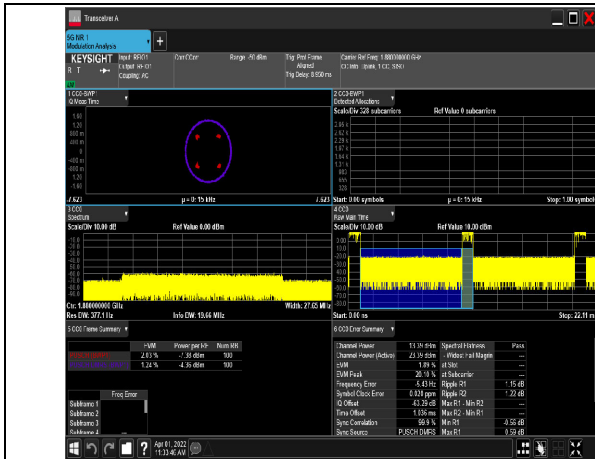
3 Appendix C: Modulation characteristics for SA

3.1 Test Result

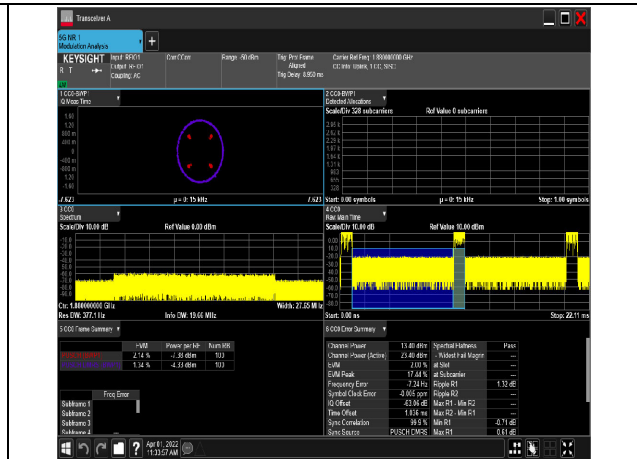
NR Band	SCS [kHz]	BW [MHz]	Channel	Freq [MHz]	Modulation	RB config	Verdict
N2	15	20	M	1880	DFT-PI/2BPSK	Outer_Full	PASS
N2	15	20	M	1880	DFT-QPSK	Outer_Full	PASS
N2	15	20	M	1880	DFT-16QAM	Outer_Full	PASS
N2	15	20	M	1880	DFT-64QAM	Outer_Full	PASS
N2	15	20	M	1880	DFT-256QAM	Outer_Full	PASS
N2	15	20	M	1880	CP-QPSK	Outer_Full	PASS
N2	15	20	M	1880	CP-16QAM	Outer_Full	PASS
N2	15	20	M	1880	CP-64QAM	Outer_Full	PASS
N2	15	20	M	1880	CP-256QAM	Outer_Full	PASS

3.2 Test Plots

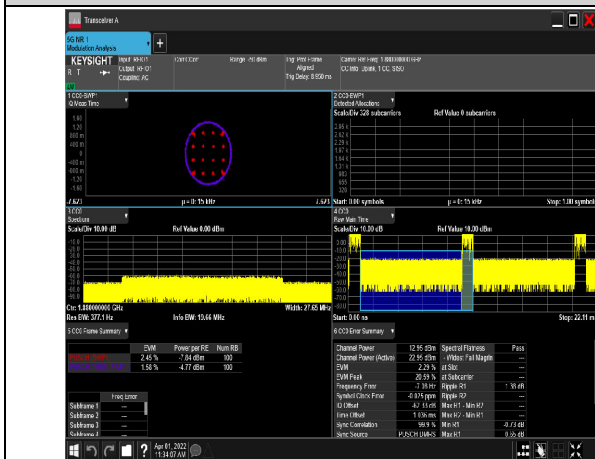
3.2.1 Channel bandwidth=20MHz



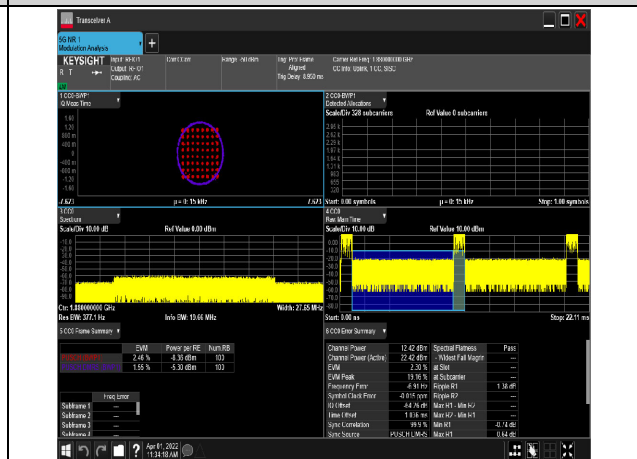
1-N2-PC3-15-20-M-1-DFT-PI/2BPSK-Outer_Full-100 @0-Ant1-see graph-PASS



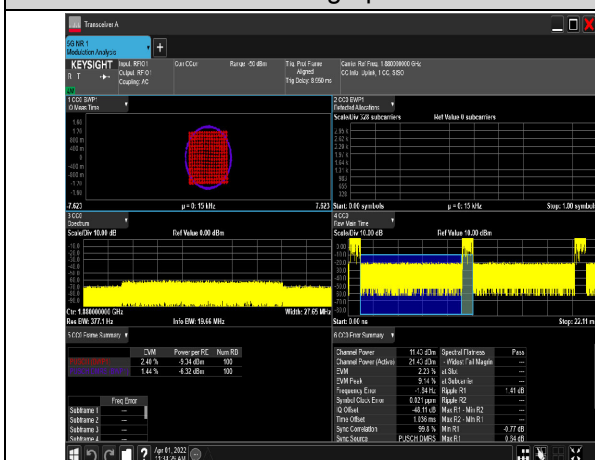
1-N2-PC3-15-20-M-2-DFT-QPSK-Outer_Full-100 @0-Ant1-see graph-PASS



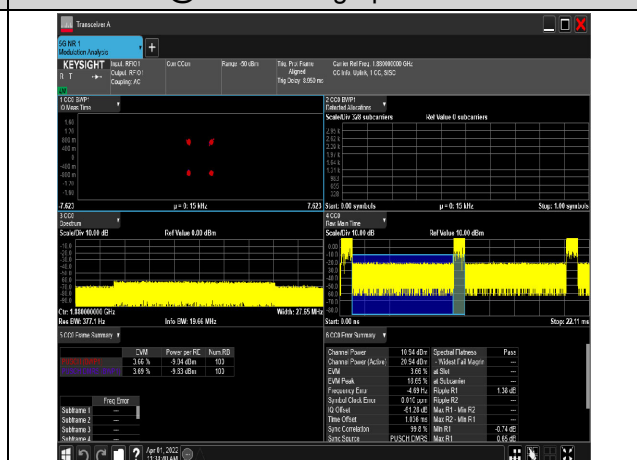
1-N2-PC3-15-20-M-3-DFT-16QAM-Outer_Full-100@0-Ant1-see graph-PASS



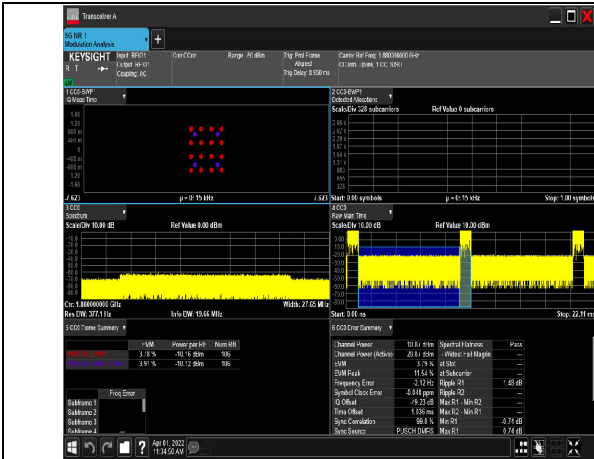
1-N2-PC3-15-20-M-4-DFT-64QAM-Outer_Full-100@0-Ant1-see graph-PASS



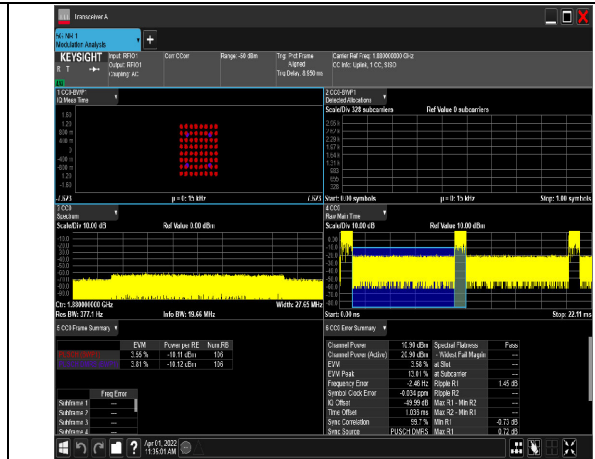
1-N2-PC3-15-20-M-5-DFT-256QAM-Outer_Full-100@0-Ant1-see graph-PASS



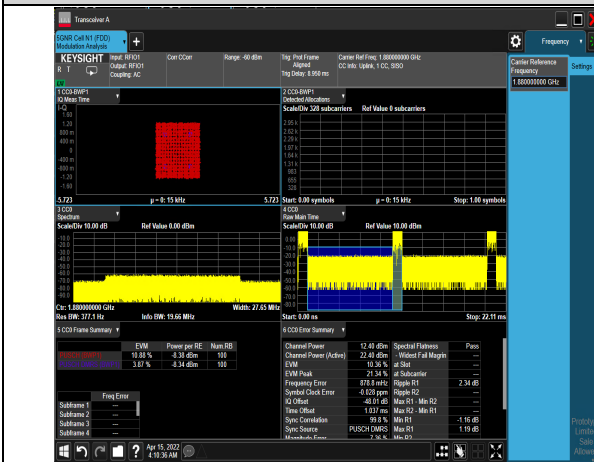
1-N2-PC3-15-20-M-6-CP-QPSK-Outer_Full-106@0-Ant1-see graph-PASS



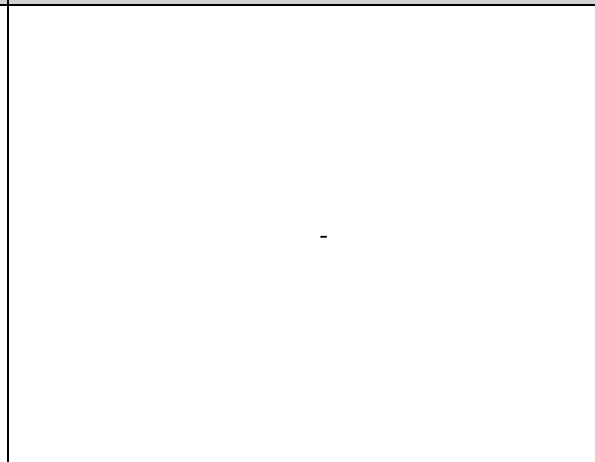
1-N2-PC3-15-20-M-7-CP-16QAM-Outer_Full-106@
@0-Ant1-see graph-PASS



1-N2-PC3-15-20-M-7-CP-64QAM-Outer_Full-106
@0-Ant1-see graph-PASS



1-N2-PC3-15-20-M-7-CP-256QAM-Outer_Full-106
@0-Ant1-see graph-PASS



4 Appendix D: 26dB Bandwidth and Occupied Bandwidth for SA

4.1 Test Result

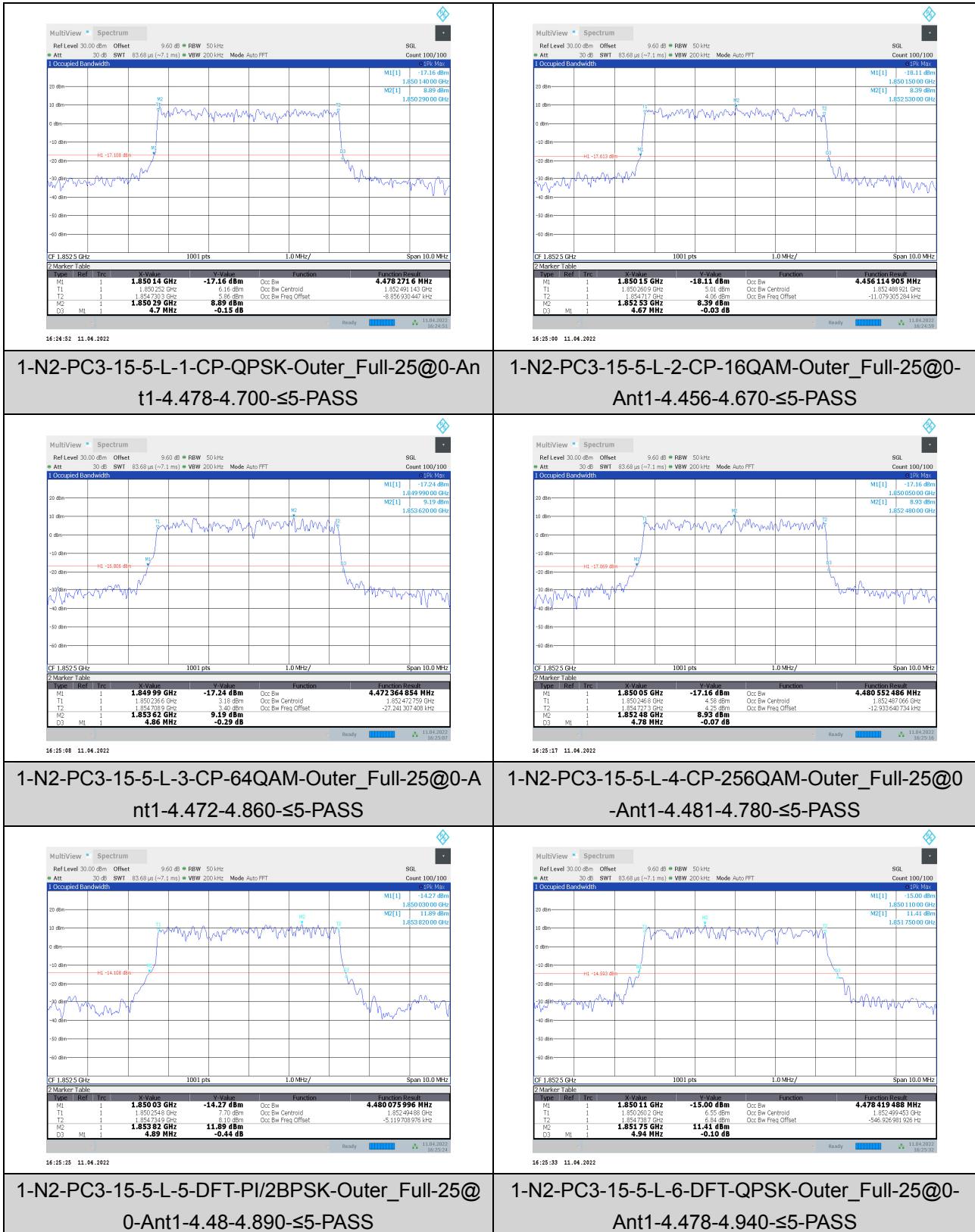
NR Band	SCS [kHz]	BW [MHz]	Channel	Freq [MHz]	Modulation	RB config	Occupied Bandwidth [MHz]	Emission Bandwidth [MHz]	Verdict
N2	15	5	L	1852.5	CP-QPSK	Outer_Full	4.478	4.700	PASS
N2	15	5	L	1852.5	CP-16QAM	Outer_Full	4.456	4.670	PASS
N2	15	5	L	1852.5	CP-64QAM	Outer_Full	4.472	4.860	PASS
N2	15	5	L	1852.5	CP-256QAM	Outer_Full	4.481	4.780	PASS
N2	15	5	L	1852.5	DFT-PI/2BPSK	Outer_Full	4.48	4.890	PASS
N2	15	5	L	1852.5	DFT-QPSK	Outer_Full	4.478	4.940	PASS
N2	15	5	L	1852.5	DFT-16QAM	Outer_Full	4.432	4.610	PASS
N2	15	5	L	1852.5	DFT-64QAM	Outer_Full	4.438	4.620	PASS
N2	15	5	L	1852.5	DFT-256QAM	Outer_Full	4.469	4.830	PASS
N2	15	5	M	1880	CP-QPSK	Outer_Full	4.464	4.850	PASS
N2	15	5	M	1880	CP-16QAM	Outer_Full	4.479	4.620	PASS
N2	15	5	M	1880	CP-64QAM	Outer_Full	4.432	4.620	PASS
N2	15	5	M	1880	CP-256QAM	Outer_Full	4.458	4.810	PASS
N2	15	5	M	1880	DFT-PI/2BPSK	Outer_Full	4.423	4.840	PASS
N2	15	5	M	1880	DFT-QPSK	Outer_Full	4.431	4.630	PASS
N2	15	5	M	1880	DFT-16QAM	Outer_Full	4.45	4.610	PASS
N2	15	5	M	1880	DFT-64QAM	Outer_Full	4.505	4.980	PASS
N2	15	5	M	1880	DFT-256QAM	Outer_Full	4.456	4.830	PASS
N2	15	5	H	1907.5	CP-QPSK	Outer_Full	4.479	4.910	PASS
N2	15	5	H	1907.5	CP-16QAM	Outer_Full	4.472	4.880	PASS
N2	15	5	H	1907.5	CP-64QAM	Outer_Full	4.452	4.700	PASS
N2	15	5	H	1907.5	CP-256QAM	Outer_Full	4.454	4.740	PASS
N2	15	5	H	1907.5	DFT-PI/2BPSK	Outer_Full	4.485	5.010	PASS
N2	15	5	H	1907.5	DFT-QPSK	Outer_Full	4.438	4.840	PASS
N2	15	5	H	1907.5	DFT-16QAM	Outer_Full	4.501	4.900	PASS
N2	15	5	H	1907.5	DFT-64QAM	Outer_Full	4.546	5.220	PASS
N2	15	5	H	1907.5	DFT-256QAM	Outer_Full	4.454	4.830	PASS
N2	15	10	L	1855	CP-QPSK	Outer_Full	8.95	9.300	PASS
N2	15	10	L	1855	CP-16QAM	Outer_Full	9.308	9.700	PASS
N2	15	10	L	1855	CP-64QAM	Outer_Full	9.209	9.800	PASS
N2	15	10	L	1855	CP-256QAM	Outer_Full	9.284	9.800	PASS
N2	15	10	L	1855	DFT-PI/2BPSK	Outer_Full	8.902	9.420	PASS
N2	15	10	L	1855	DFT-QPSK	Outer_Full	8.922	9.340	PASS
N2	15	10	L	1855	DFT-16QAM	Outer_Full	8.947	9.260	PASS
N2	15	10	L	1855	DFT-64QAM	Outer_Full	8.837	9.540	PASS

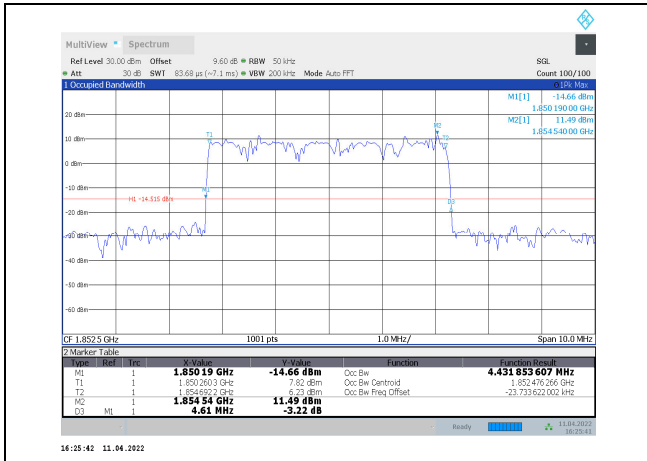
NR Band	SCS [kHz]	BW [MHz]	Channel	Freq [MHz]	Modulation	RB config	Occupied Bandwidth [MHz]	Emission Bandwidth [MHz]	Verdict
N2	15	10	L	1855	DFT-256QAM	Outer_Full	8.968	9.260	PASS
N2	15	10	M	1880	CP-QPSK	Outer_Full	8.968	9.440	PASS
N2	15	10	M	1880	CP-16QAM	Outer_Full	9.254	9.620	PASS
N2	15	10	M	1880	CP-64QAM	Outer_Full	9.262	10.000	PASS
N2	15	10	M	1880	CP-256QAM	Outer_Full	9.264	9.780	PASS
N2	15	10	M	1880	DFT-PI/2BPSK	Outer_Full	8.925	9.460	PASS
N2	15	10	M	1880	DFT-QPSK	Outer_Full	8.937	9.400	PASS
N2	15	10	M	1880	DFT-16QAM	Outer_Full	8.868	9.240	PASS
N2	15	10	M	1880	DFT-64QAM	Outer_Full	8.914	9.500	PASS
N2	15	10	M	1880	DFT-256QAM	Outer_Full	8.916	9.380	PASS
N2	15	10	H	1905	CP-QPSK	Outer_Full	8.938	9.500	PASS
N2	15	10	H	1905	CP-16QAM	Outer_Full	9.262	9.580	PASS
N2	15	10	H	1905	CP-64QAM	Outer_Full	9.3	9.740	PASS
N2	15	10	H	1905	CP-256QAM	Outer_Full	9.292	9.640	PASS
N2	15	10	H	1905	DFT-PI/2BPSK	Outer_Full	8.923	9.540	PASS
N2	15	10	H	1905	DFT-QPSK	Outer_Full	8.887	9.240	PASS
N2	15	10	H	1905	DFT-16QAM	Outer_Full	8.934	9.320	PASS
N2	15	10	H	1905	DFT-64QAM	Outer_Full	8.928	9.480	PASS
N2	15	10	H	1905	DFT-256QAM	Outer_Full	8.899	9.380	PASS
N2	15	15	L	1857.5	CP-QPSK	Outer_Full	13.367	14.070	PASS
N2	15	15	L	1857.5	CP-16QAM	Outer_Full	14.072	14.760	PASS
N2	15	15	L	1857.5	CP-64QAM	Outer_Full	14.143	14.670	PASS
N2	15	15	L	1857.5	CP-256QAM	Outer_Full	14.094	14.760	PASS
N2	15	15	L	1857.5	DFT-PI/2BPSK	Outer_Full	13.371	14.220	PASS
N2	15	15	L	1857.5	DFT-QPSK	Outer_Full	13.455	14.190	PASS
N2	15	15	L	1857.5	DFT-16QAM	Outer_Full	13.43	14.160	PASS
N2	15	15	L	1857.5	DFT-64QAM	Outer_Full	13.297	13.980	PASS
N2	15	15	L	1857.5	DFT-256QAM	Outer_Full	13.484	14.280	PASS
N2	15	15	M	1880	CP-QPSK	Outer_Full	13.307	14.010	PASS
N2	15	15	M	1880	CP-16QAM	Outer_Full	14.13	14.760	PASS
N2	15	15	M	1880	CP-64QAM	Outer_Full	14.122	15.030	PASS
N2	15	15	M	1880	CP-256QAM	Outer_Full	14.048	14.940	PASS
N2	15	15	M	1880	DFT-PI/2BPSK	Outer_Full	13.385	14.010	PASS
N2	15	15	M	1880	DFT-QPSK	Outer_Full	13.354	14.280	PASS
N2	15	15	M	1880	DFT-16QAM	Outer_Full	13.352	13.980	PASS
N2	15	15	M	1880	DFT-64QAM	Outer_Full	13.434	14.130	PASS
N2	15	15	M	1880	DFT-256QAM	Outer_Full	13.344	14.250	PASS
N2	15	15	H	1902.5	CP-QPSK	Outer_Full	13.41	14.190	PASS
N2	15	15	H	1902.5	CP-16QAM	Outer_Full	14.07	14.670	PASS

NR Band	SCS [kHz]	BW [MHz]	Channel	Freq [MHz]	Modulation	RB config	Occupied Bandwidth [MHz]	Emission Bandwidth [MHz]	Verdict
N2	15	15	H	1902.5	CP-64QAM	Outer_Full	14.17	14.730	PASS
N2	15	15	H	1902.5	CP-256QAM	Outer_Full	14.123	14.700	PASS
N2	15	15	H	1902.5	DFT-PI/2BPSK	Outer_Full	13.435	14.040	PASS
N2	15	15	H	1902.5	DFT-QPSK	Outer_Full	13.46	14.160	PASS
N2	15	15	H	1902.5	DFT-16QAM	Outer_Full	13.348	13.920	PASS
N2	15	15	H	1902.5	DFT-64QAM	Outer_Full	13.347	14.190	PASS
N2	15	15	H	1902.5	DFT-256QAM	Outer_Full	13.405	14.160	PASS
N2	15	20	L	1860	CP-QPSK	Outer_Full	17.886	18.680	PASS
N2	15	20	L	1860	CP-16QAM	Outer_Full	18.924	19.760	PASS
N2	15	20	L	1860	CP-64QAM	Outer_Full	18.998	19.760	PASS
N2	15	20	L	1860	CP-256QAM	Outer_Full	18.898	20.480	PASS
N2	15	20	L	1860	DFT-PI/2BPSK	Outer_Full	17.73	18.520	PASS
N2	15	20	L	1860	DFT-QPSK	Outer_Full	17.801	18.480	PASS
N2	15	20	L	1860	DFT-16QAM	Outer_Full	17.893	18.520	PASS
N2	15	20	L	1860	DFT-64QAM	Outer_Full	17.964	18.600	PASS
N2	15	20	L	1860	DFT-256QAM	Outer_Full	17.898	18.560	PASS
N2	15	20	M	1880	CP-QPSK	Outer_Full	17.859	18.600	PASS
N2	15	20	M	1880	CP-16QAM	Outer_Full	18.943	19.760	PASS
N2	15	20	M	1880	CP-64QAM	Outer_Full	18.83	19.760	PASS
N2	15	20	M	1880	CP-256QAM	Outer_Full	18.886	19.680	PASS
N2	15	20	M	1880	DFT-PI/2BPSK	Outer_Full	17.879	18.520	PASS
N2	15	20	M	1880	DFT-QPSK	Outer_Full	17.755	18.520	PASS
N2	15	20	M	1880	DFT-16QAM	Outer_Full	17.81	18.560	PASS
N2	15	20	M	1880	DFT-64QAM	Outer_Full	17.754	18.720	PASS
N2	15	20	M	1880	DFT-256QAM	Outer_Full	17.888	18.560	PASS
N2	15	20	H	1900	CP-QPSK	Outer_Full	17.898	18.520	PASS
N2	15	20	H	1900	CP-16QAM	Outer_Full	18.905	19.720	PASS
N2	15	20	H	1900	CP-64QAM	Outer_Full	18.842	21.680	PASS
N2	15	20	H	1900	CP-256QAM	Outer_Full	18.999	19.680	PASS
N2	15	20	H	1900	DFT-PI/2BPSK	Outer_Full	17.883	18.800	PASS
N2	15	20	H	1900	DFT-QPSK	Outer_Full	17.864	18.520	PASS
N2	15	20	H	1900	DFT-16QAM	Outer_Full	17.851	18.600	PASS
N2	15	20	H	1900	DFT-64QAM	Outer_Full	17.843	18.880	PASS
N2	15	20	H	1900	DFT-256QAM	Outer_Full	17.869	18.720	PASS

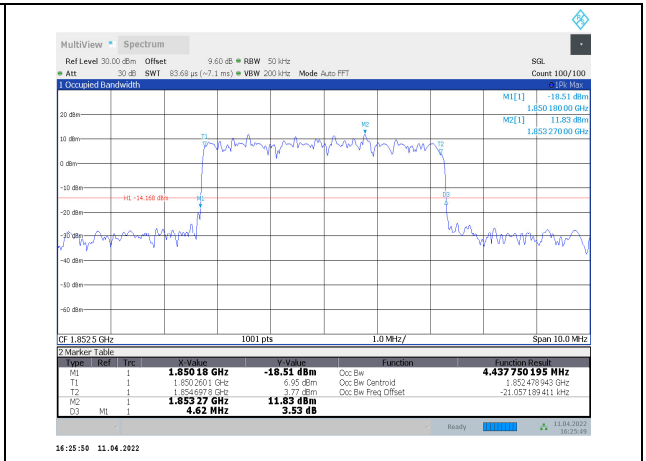
4.2 Test Plots

4.2.1 Channel bandwidth=5MHz

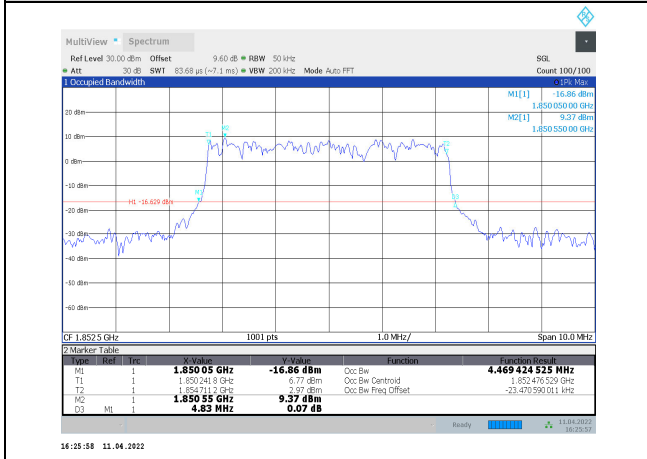




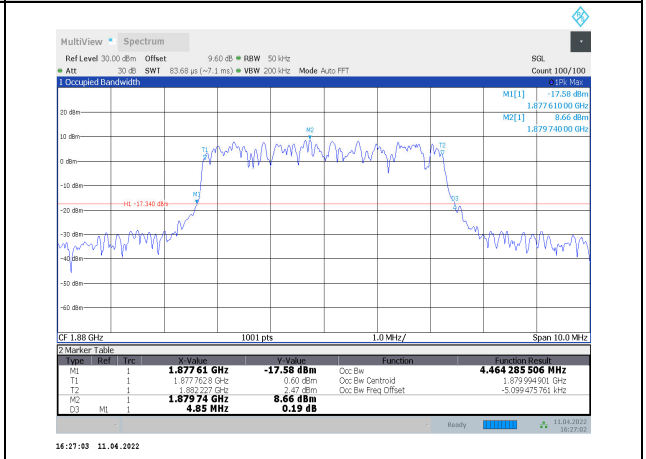
1-N2-PC3-15-5-L-7-DFT-16QAM-Outer_Full-25@0-Ant1-4.432-4.610-≤5-PASS



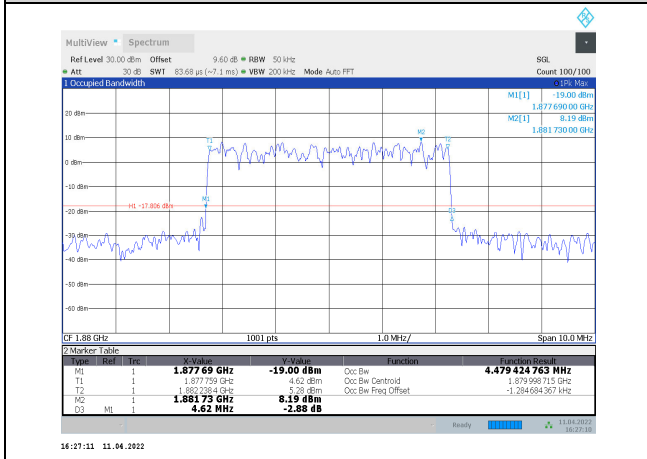
1-N2-PC3-15-5-L-8-DFT-64QAM-Outer_Full-25@0-Ant1-4.438-4.620-≤5-PASS



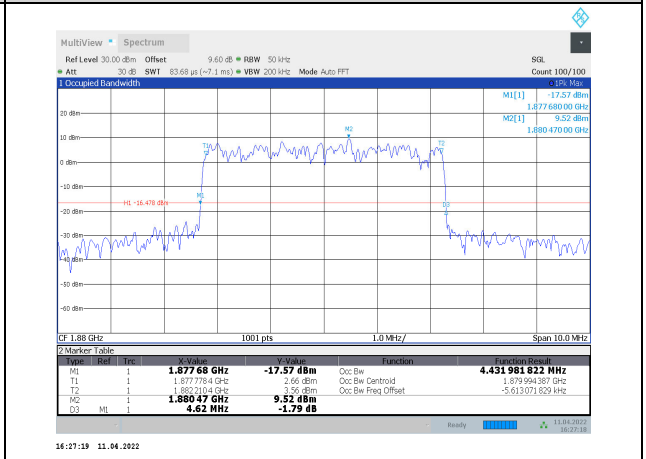
1-N2-PC3-15-5-L-9-DFT-256QAM-Outer_Full-25@0-Ant1-4.469-4.830-≤5-PASS



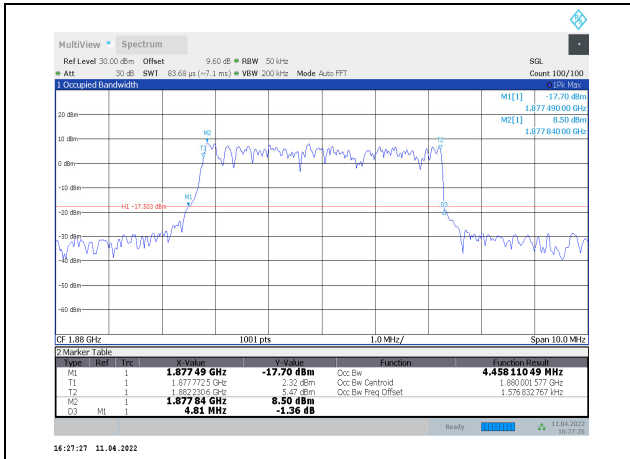
1-N2-PC3-15-5-M-1-CP-QPSK-Outer_Full-25@0-Ant1-4.464-4.850-≤5-PASS



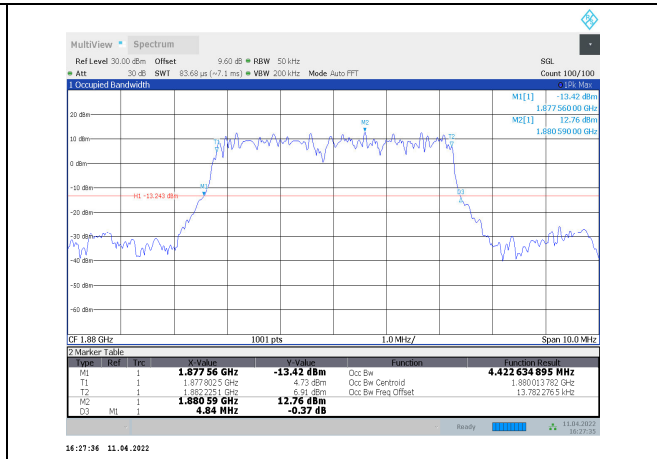
1-N2-PC3-15-5-M-2-CP-16QAM-Outer_Full-25@0-Ant1-4.479-4.620-≤5-PASS



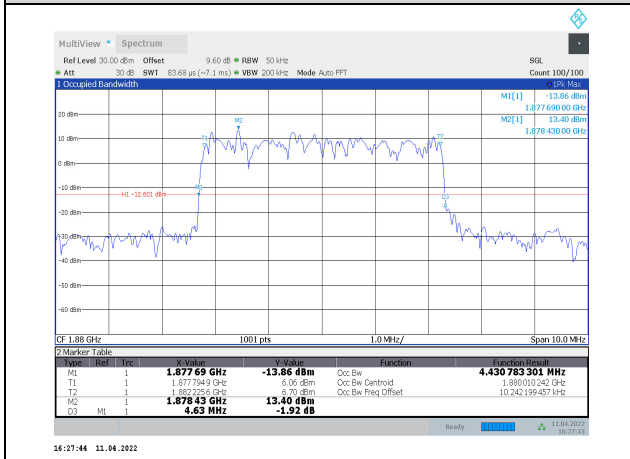
1-N2-PC3-15-5-M-3-CP-64QAM-Outer_Full-25@0-Ant1-4.432-4.620-≤5-PASS



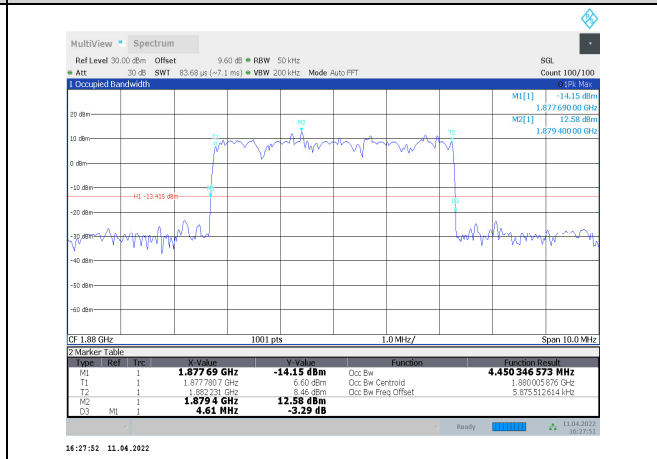
1-N2-PC3-15-5-M-4-CP-256QAM-Outer_Full-25@
0-Ant1-4.458-4.810-≤ 5-PASS



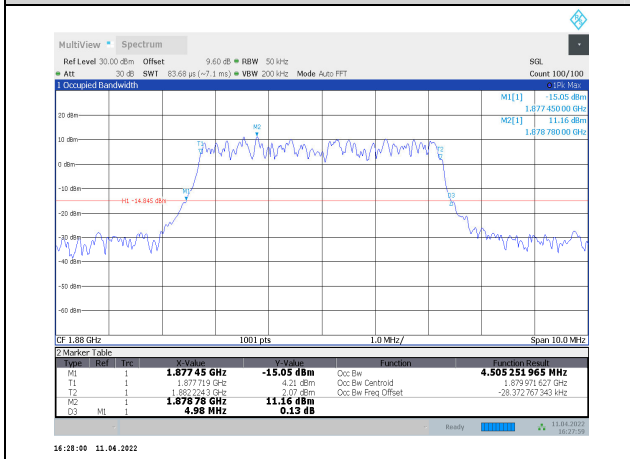
1-N2-PC3-15-5-M-5-DFT-PI/2BPSK-Outer_Full-25@
0-Ant1-4.423-4.840-≤ 5-PASS



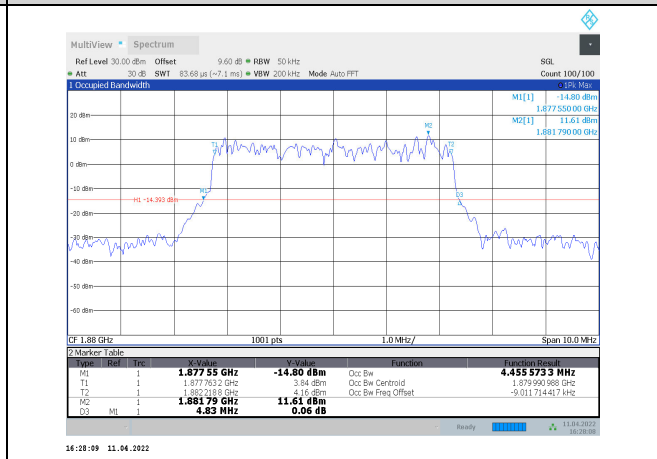
1-N2-PC3-15-5-M-6-DFT-QPSK-Outer_Full-25@0-
Ant1-4.431-4.630-≤ 5-PASS



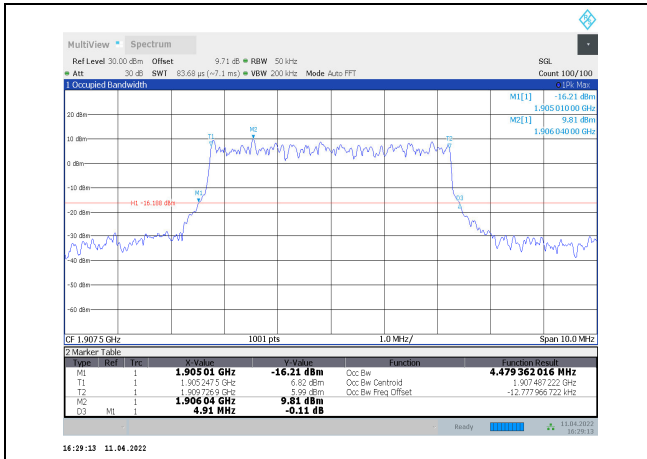
1-N2-PC3-15-5-M-7-DFT-16QAM-Outer_Full-25@0-
Ant1-4.45-4.610-≤ 5-PASS



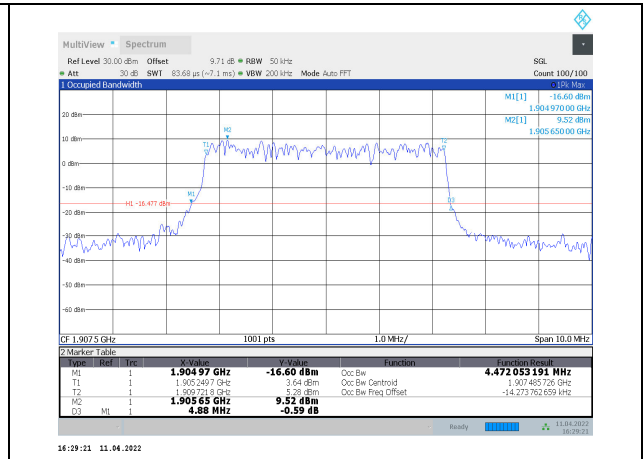
1-N2-PC3-15-5-M-8-DFT-64QAM-Outer_Full-25@
0-Ant1-4.505-4.980-≤ 5-PASS



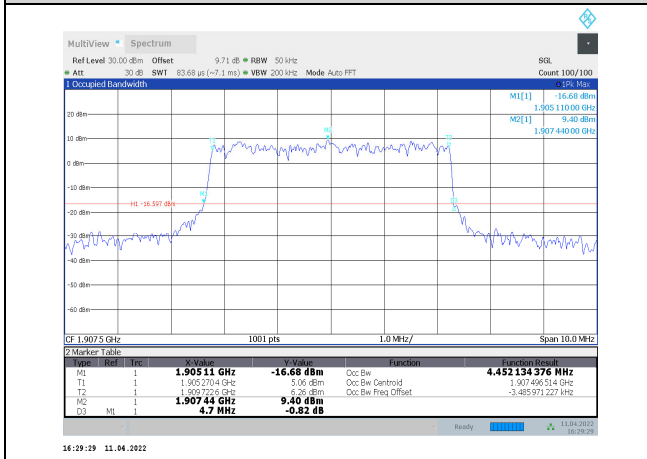
1-N2-PC3-15-5-M-9-DFT-256QAM-Outer_Full-25@
0-Ant1-4.456-4.830-≤ 5-PASS



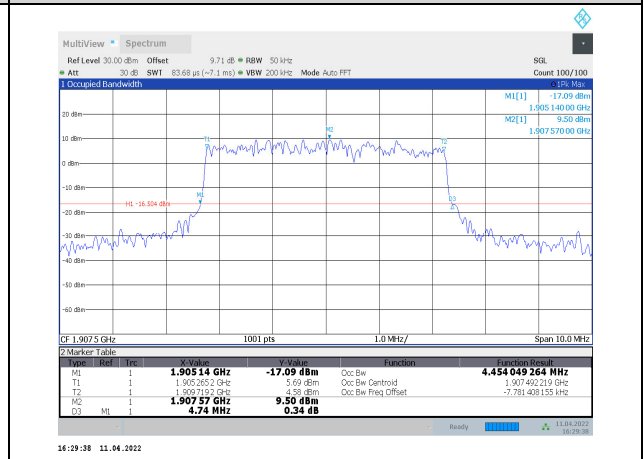
1-N2-PC3-15-5-H-1-CP-QPSK-Outer_Full-25@0-Ant1-4.479-4.910- ≤ 5 -PASS



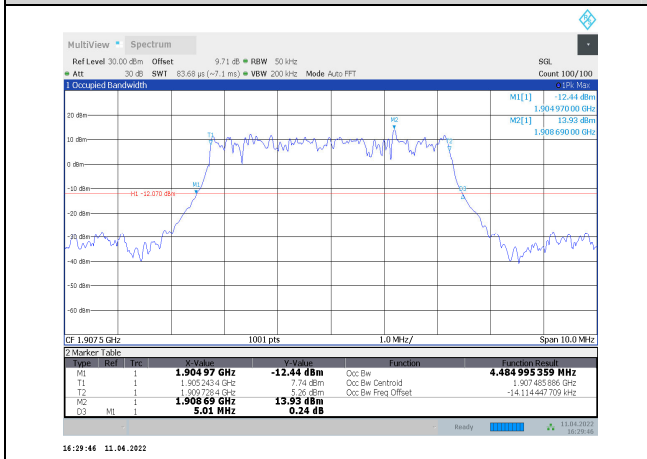
1-N2-PC3-15-5-H-2-CP-16QAM-Outer_Full-25@0-Ant1-4.472-4.880- ≤ 5 -PASS



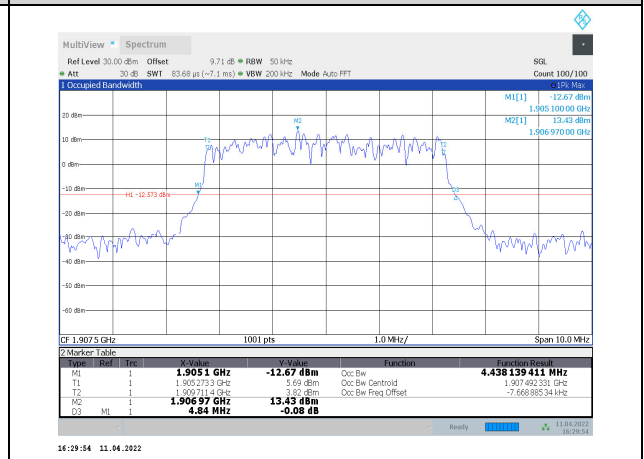
1-N2-PC3-15-5-H-3-CP-64QAM-Outer_Full-25@0-Ant1-4.452-4.700- ≤ 5 -PASS



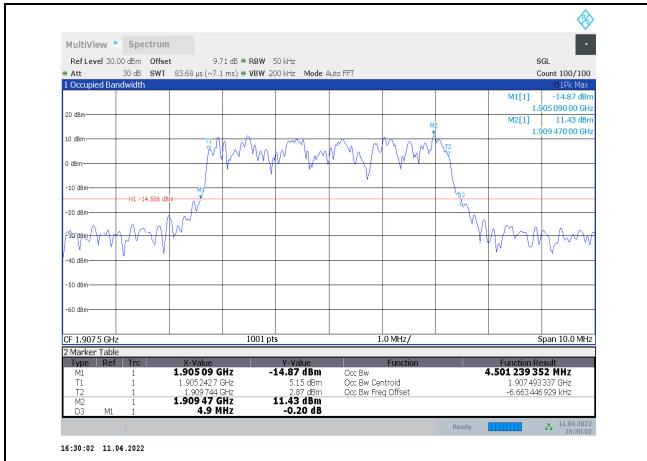
1-N2-PC3-15-5-H-4-CP-256QAM-Outer_Full-25@0-Ant1-4.454-4.740- ≤ 5 -PASS



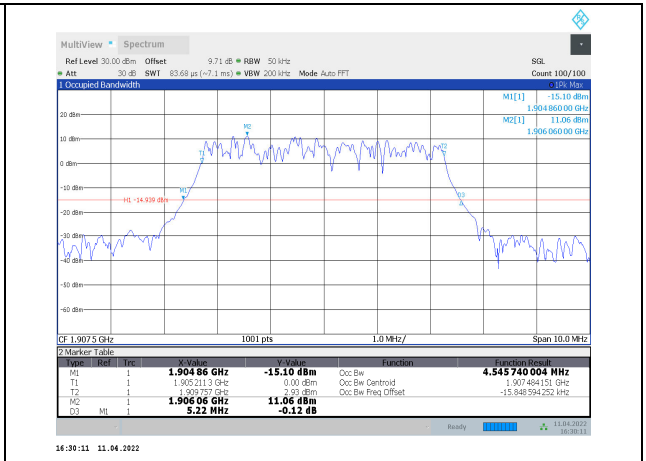
1-N2-PC3-15-5-H-5-DFT-PI/2BPSK-Outer_Full-25@0-Ant1-4.485-5.010- ≤ 5 -PASS



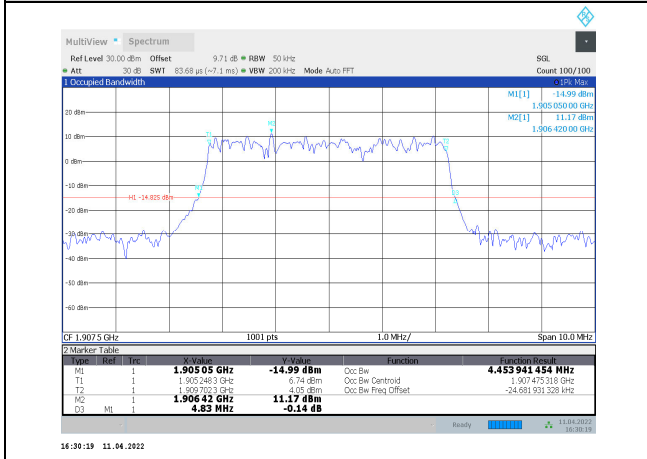
1-N2-PC3-15-5-H-6-DFT-QPSK-Outer_Full-25@0-Ant1-4.438-4.840- ≤ 5 -PASS



1-N2-PC3-15-5-H-7-DFT-16QAM-Outer_Full-25@0-Ant1-4.501-4.900-≤ 5-PASS



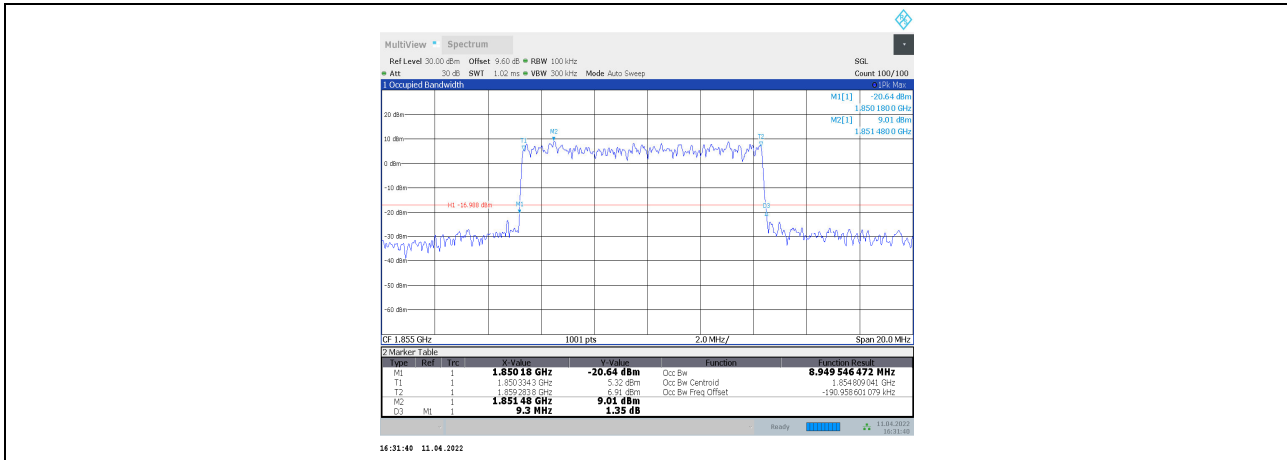
1-N2-PC3-15-5-H-8-DFT-64QAM-Outer_Full-25@0-Ant1-4.546-5.220-≤ 5-PASS



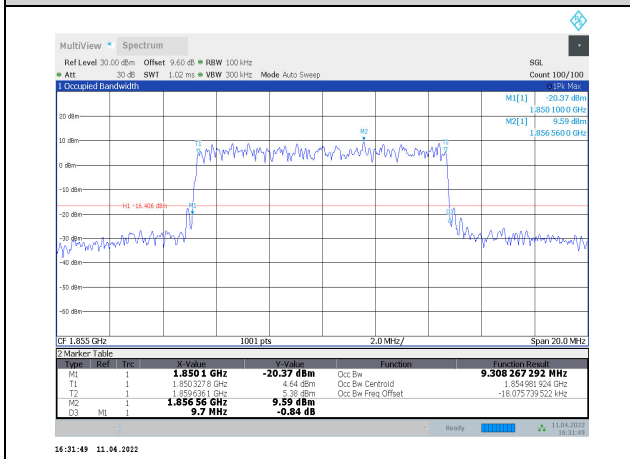
1-N2-PC3-15-5-H-9-DFT-256QAM-Outer_Full-25@0-Ant1-4.454-4.830-≤ 5-PASS



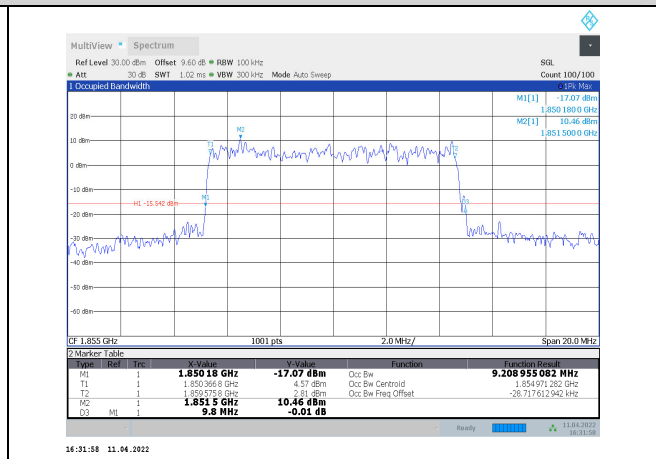
4.2.2 Channel bandwidth=10MHz



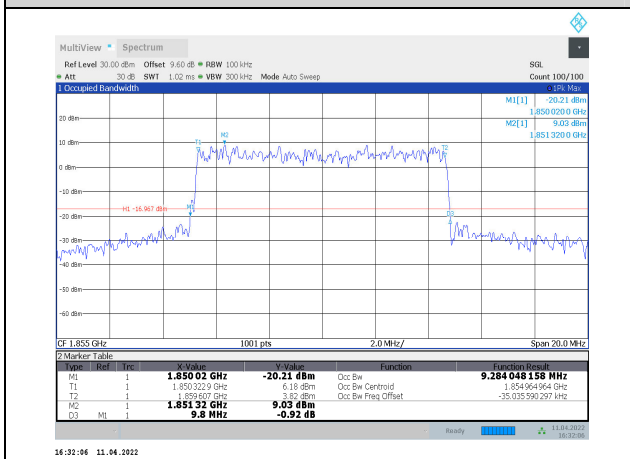
1-N2-PC3-15-10-L-1-CP-QPSK-Outer_Full-50@0-Ant1-8.95-9.300-≤10-PASS



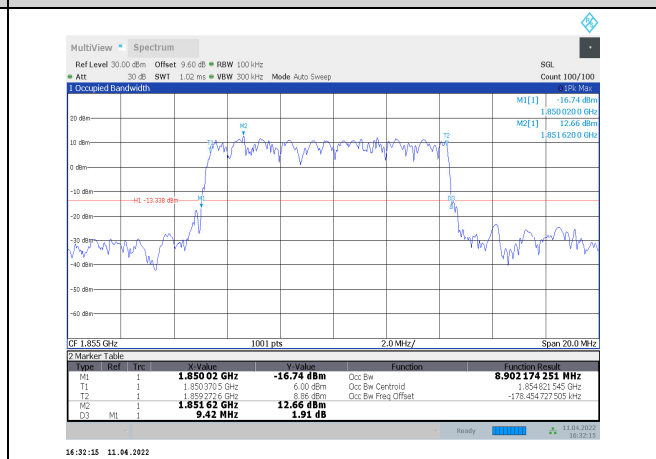
1-N2-PC3-15-10-L-2-CP-16QAM-Outer_Full-52@0-Ant1-9.308-9.700-≤10-PASS



1-N2-PC3-15-10-L-3-CP-64QAM-Outer_Full-52@0-Ant1-9.209-9.800-≤10-PASS



1-N2-PC3-15-10-L-4-CP-256QAM-Outer_Full-52@0-Ant1-9.284-9.800-≤10-PASS



1-N2-PC3-15-10-L-5-DFT-PI/2BPSK-Outer_Full-50@0-Ant1-8.902-9.420-≤10-PASS