

# HANDHELD THERMAL IMAGING



## XS SERIES INSTRUCTION MANUAL

Shenzhen Shi Yutong Technology Co., LTD



1、Lens Cover	2、Objective Focusing Ring	3、Power on/Standby Button
4、Navigation UP Button	5、MENU Button	6、Navigation DOWN Button
7、LED Indicator (GREEN = POWER On, RED = Charging)	8、Eyepiece Focusing Ring	9、Red Laser Pointer
10、Storage Card Compartment	11、Hand Strap	12、Objective Lens
13、Eyepiece Lens	14、Battery Cap	

# | In The Box

- XS HANDHELD THERMAL IMAGING
- 18650 Lithium Battery
- Type-C Cable
- 5V2A Adapter
- Manual
- Hand Strap

# | Quick Start

## Power On and Image Settings

- Hold the power (ON/OFF) button (3) for 3 seconds to power on.
- Rotate the eyepiece focusing ring (8) to get a clear image of the icons on the display.
- Rotate the lens focusing ring (2) to get a clear image of the observed object.
- Press the navigation UP button (4) to select the operating modes (White Hot, Sky Mode, Black Hot, Red Hot, Fusion).
- Press the navigation DOWN button (6) to select digital magnification (1x, 2x, 4x, 8x).
- Press the MENU button (5) to enter the menu to select the appropriate parameter.
- Hold the power (ON/OFF) button (3) for 3 seconds to power off. The LED indicator will be turned off after the device is powered off.

# Button



## Power (ON/OFF) Button

Hold the power (ON/OFF) button (3) for 3 seconds to power off. The LED indicator will be turned off after power off.

Hold the power (ON/OFF) button (3) for 1-2 seconds to go into sleep mode. The LED indicator will be green when the device is in sleep mode. Wake the device by pressing the power (ON/OFF) button.

*\*Press the power button to refresh the device.*



## ↑ Navigation UP button

In menu mode:

Press to switch menu items upwards.

When not in menu mode:

Press to change the operating modes.

Hold to take a picture



## MENU Button

In menu mode:

Press to confirm selection.

Hold to exit main menu or submenu.

When not in menu mode:

Press to enter menu mode.

Hold to turn on or off the red laser pointer.



## ↓ Navigation DOWN Button

In menu mode:

Press to switch menu items downwards.

When not in menu mode:

Press to change set-up zoom 1x,2x,4x,8x

Hold to take a video.

# Menu Function

## XS Detailed Functions

### 1. Operating Mode

Options: "White Hot"/"Sky Mode"/"Black Hot"/"Red Hot"/"Fusion"

Default mode is "White Hot"



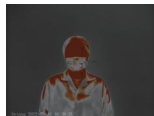
White Hot



Sky Mode



Black Hot



Red Hot



Fusion

### 2. Video Output

The video output function of the CVBS is enabled or disabled

### 3. WiFi

Options: "On"/"Off"

Turn on WiFi on both the device's Menu and user's phone.

On user's phone, find and connect to "APPshow-XS-XXX" WiFi network with password 12345678.

Live image will be displayed on the App after the phone is connected to the device's WiFi.

## 4.OLED Brightness

Select "OLED Brightness" in the main menu, press MENU button to set the screen brightness from "Super Dark" / "Dark" / "Normal" / "Bright" / "Super Bright". The default mode is "Normal".

## 5.Target Brightness

Find the "Target Brightness" in the main menu. Press MENU button to choose from the 5 brightness levels (1-5).

## 6.Contrast Ratio

Press the MENU button to enter the main menu and select "Contrast Ratio". There are 10 options (1-10).

## 7.Image Detail Boost

Press the MENU button to enter the main menu and select the "Image Detail Boost" function. Image resolution will vary according to each option. Press MENU button to choose your option

## 8.Date/Time

Move the options by pressing the MENU button. Change the value using the UP/DOWN button. Confirm the values by pressing the MENU button. Quit by holding the MENU button.

## 9.Language

Enter the language menu setting. Save the settings by pressing the MENU button.

## 10.Record Audio

Select "Record Audio" and press MENU button. Select "On"/"Off".

## 11.Format

Select "Format" under main menu, press the MENU button to format the memory storage in the device.  
Attention! Data cannot be recovered after formatting!

## 12.Auto Power-Off

Select "Auto Power Off" under main menu, short press MENU button to set the mode between "3 Min", "5 Min" and "Off".  
The default mode is "Off".

## 13.Default Setting

Find default settings under main menu, short press MENU button to enter the submenu.  
Select "Confirm" to save the default settings. Attention ! Factory default settings will be saved after confirmation.

## **14.Pixel Fix**

Select "Pixel Fix" and press MENU button to get to the sub menu. The lens should be covered with lens cover before performing the pixel fix. Press the MENU button and follow the prompts to fix the bad pixels. After repair, please remember to save it.

Navigation key up/down move cursor, power button to switch options, short press M key to save.

## **15.Image Correction**

Enter the menu of image correction. If image correction is required, select and confirm, close the lens cover, and press "M" to correct the background image uniformity. After correction, it will automatically save and exit.

## **16.Version**

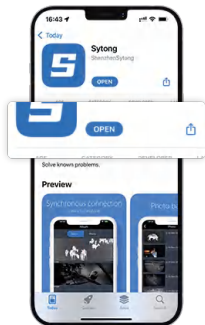
Select "Version" to view the device's software version.



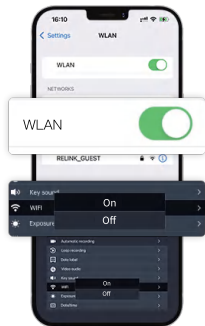
# APP Connection



Download APP by Scanning the QR code according to the mobile phone system.



Download the APP



Turn on WiFi on XS and phone



Enter into APP



choose WiFi "Sytong ..." to connect WiFi  
(password: **12345678**)

# XS03

## XS03 Data Sheet

### Sensor (Military Grade)

Type	Uncooled	Resolution	384x288 Super Sensitive
Frame Rate	50 Hz	Pixel Size	12µm
NETD	<25mk		

### Optical Characteristics

Objective Lens	f15/19/25/35mm, F/1.0	Magnification	1.2x/1.5x/2.0x/2.8x
Digital Zoom	1x / 2x / 4 x/ 8x	Eye Relief	30 mm
Dioptre Adjustment	+5/-5 D	Close-up Range	5m-∞
FOV	17.5°X13.1° / 13.8°X10.4° / 10.5°X7.9° / 7.5°X5.7°		

### Display

Operating Mode	White Hot, Black Hot, Sky Mode, Red Hot, Fusion	Type / Resolution	0.39 inch / OLED / 1024X768
----------------	--	-------------------	-----------------------------

## Operational Characteristics

Power Supply	3-4.2 V	Waterproof Rating	IP66
External Power Supply	5V (USB)	Battery	18650 /3200mAh
Operating Temperature	- 20°C to + 50°C	Dimensions	156X54X75mm
Weight(Without Battery /Mount)	308g	Operating Time (At Temperature Of 22°C)	5 hours

## Video Recorder

Video / Photo Resolution	1024x768	Video / Photo Format	.mp4 / .jpg
Supported Memory Type	Built-in 32G Memory Card		

## Wifi Channel

Frequency	2.4GHz	Standard	802.11 b/g
WiFi Signal Range	15m	Detection Distance (Target Size : 1.7m x 0.5m)	750m/955m/1250m/1750m

# XS06

## XS06 Data Sheet

### Sensor (Military Grade)

Type	Uncooled	Resolution	640x512 Super Sensitive
Frame Rate	50 Hz	Pixel Size	12µm
NETD	<25mk		

### Optical Characteristics

Objective Lens	f19/25/35mm, F/1.0	Magnification	0.9x/1.2x/1.7x
Digital Zoom	1x / 2x / 4 x/ 8x	Eye Relief	30 mm
Dioptre Adjustment	+5/-5 D	Close-up Range	5m-∞
FOV	22.9°X18.4° / 17.5°X13.1° / 12.5°X9.4°		

### Display

Operating Mode	White Hot, Black Hot, Sky Mode, Red Hot, Fusion	Type / Resolution	0.39 inch / OLED / 1024X768
----------------	--	-------------------	-----------------------------

## Operational Characteristics

Power Supply	3-4.2 V	Waterproof Rating	IP66
External Power Supply	5V (USB)	Battery	18650 /3200mAh
Operating Temperature	- 20°C to + 50°C	Dimensions	156X54X75mm
Weight(Without Battery /Mount)	308g	Operating Time (At Temperature Of 22°C)	5 hours

## Video Recorder

Video / Photo Resolution	1024x768	Video / Photo Format	.mp4 / .jpg
Supported Memory Type	Built-in 32G Memory Card		

## Wifi Channel

Frequency	2.4GHz	Standard	802.11 b/g
WiFi Signal Range	15m	Detection Distance (Target Size : 1.7m x 0.5m)	955m/1250m/1750m

# **Notice!**

## Operating Instructions For Accessories

### **Power Adapter**

Used only to charge batteries equal to or below 5V/2A.

### **Red Laser Pointer Adjustment**

Hold the MENU button to turn on/off the red laser pointer. Adjust the position of the red laser pointer by using an inner hexagon wrench.



Follow Sytong official account to learn more  
Website: <https://www.sytong2013.com>

**Sytong**



**FCC Warning Statement: Changes or modifications to this unit not expressly approved by the party responsible for compliance could void the user's authority to operate the equipment. This equipment has been tested and found to comply with the limits for a Class B digital device, pursuant to Part 15 of the FCC Rules. These limits are designed to provide reasonable protection against harmful interference in a residential installation. This equipment generates, uses and can radiate radio frequency energy and, if not installed and used in accordance with the instructions, may cause harmful interference to radio communications.**

**However, there is no guarantee that interference will not occur in a particular installation. If this equipment does cause harmful interference to radio or television reception, which can be determined by turning the equipment off and on, the user is encouraged to try to correct the interference by one or more of the following measures:**

- **Reorient or relocate the receiving antenna.**
- **Increase the separation between the equipment and receiver.**
- **Connect the equipment into an outlet on a circuit different from that to which the receiver is connected.**
- **Consult the dealer or an experienced radio/TV technician for help.**

**This device complies with Part 15 of the FCC Rules. Operation is subject to the following two conditions: (1) this device may not cause harmful interference, and (2) this device must accept any interference received, including interference that may cause undesired operation.**

#### **FCC Radiation Exposure Statement**

**The device has been evaluated to meet general RF exposure requirement. The device can be used in portable exposure condition without restriction.**