



Report No.: EA21090477F00101

1 of 40

**ELECTROMAGNETIC EMISSIONS COMPLIANCE
REPORT UNINTENTIONAL RADIATORS CERTIFICATION TO
FCC PART 15 SUBPART B REQUIREMENT**

for

LED Ceiling Light

**Model No.: PLU01R-0509T-YX, 5FLPR-SPX-XXXXXX, PLU01R-0712T-YX,
7FLPR-SPX-XXXXXX, PLU01R-0918T-YX, 9FLPR-SPX-XXXXXX,
PLU01R-1224T-YX, 12FLPR-SPX-XXXXXX**
(‘XY’, ‘XXXXXX’ are variables, please refer to page 6 for specific meanings)

Trademark:  

FCC ID: 2AYFP-PLU01R

Report No.: EA21090477F00101

Issue Date: Oct. 22, 2021

Prepared for

ARTIKA FOR LIVING INC

1756 50th avenue, Lachine, Quebec, Canada, H8T 2V5

Prepared by

Dong Guan Anci Electronic Technology Co., Ltd.

**1-2 Floor, Building A, No.11, Headquarters 2 Road, Songshan, Lake Hi-tech
Industrial Development Zone, Dongguan City, Guangdong Pr., China.**

**This report shall not be reproduced, except in full, without the written approval of
Dong Guan Anci Electronic Technology Co., Ltd.**



TABLE OF CONTENT

Test Report Description	Page
1. SUMMARY OF TEST RESULTS.....	5
2. GENERAL INFORMATION.....	6
2.1. Description of Device (EUT).....	6
2.2. Input / Output Ports.....	6
2.3. Independent Operation Modes.....	7
2.4. Test Manner.....	7
2.5. Description of Test Facility.....	8
2.6. Test Software.....	8
2.7. Description of Support Device.....	8
2.8. Measurement Uncertainty.....	8
3. MEASURING DEVICE AND TEST EQUIPMENT.....	9
3.1. For Power Line Conducted Emission Measurement.....	9
3.2. For Radiated Emission Measurement.....	9
4. POWER LINE CONDUCTED EMISSION MEASUREMENT.....	10
4.1. Block Diagram of Test Setup.....	10
4.2. Limits.....	10
4.3. Test Procedure.....	10
4.4. Measuring Results.....	11
5. RADIATED EMISSION MEASUREMENT (UP TO 1GHZ).....	20
5.1. Block Diagram of Test Setup.....	20
5.2. Radiated Limit.....	20
5.3. Test Procedure.....	20
5.4. Measuring Results.....	21
6. PHOTOGRAPHS.....	30
6.1. Photos of Conducted Emission Measurement.....	30
6.2. Photos of Radiation Emission Measurement.....	30
APPENDIX A: Photos of EUT (10 Pages)	

TEST REPORT DESCRIPTION

Applicant : ARTIKA FOR LIVING INC
Manufacturer : ZHEJIANG TWINSEL ELECTRONIC TECHNOLOGY CO.,LTD
Factory : ZHEJIANG SHUANGYU ELECTRONIC TECHNOLOGY CO.,LTD
Trade Mark : 
EUT : LED Ceiling Light
Model No. : PLU01R-0509T-YX, 5FLPR-SPX-XXXXXX, PLU01R-0712T-YX, 7FLPR-SPX-XXXXXX, PLU01R-0918T-YX, 9FLPR-SPX-XXXXXX, PLU01R-1224T-YX, 12FLPR-SPX-XXXXXX, ('XY', 'XXXXXX' are variables, please refer to page 6 for specific meanings)
Power Supply : AC 120V/60Hz

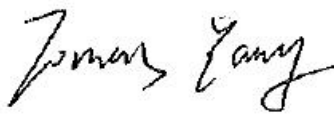
Measurement Procedure Used:

CFR 47, FCC Part 15 Subpart B
ANSI C63.4-2014

The device described above is tested by Dong Guan Anci Electronic Technology Co., Ltd. to determine the maximum emission levels emanating from the device and the severe levels of the device can endure and its performance criterion. The measurement results are contained in this test report and Dong Guan Anci Electronic Technology Co., Ltd. is assumed full of responsibility for the accuracy and completeness of these measurements. Also, this report shows that the EUT (Equipment Under Test) is technically compliant with the FCC requirements.

This report applies to above tested sample only and shall not be reproduced in part without written approval of Dong Guan Anci Electronic Technology Co., Ltd.

Date of Test : Sept. 27, 2021 to Oct. 21, 2021

Prepared by : 
Tomas Yang/Supervisor

Approved & Authorized Signer : 
Alan He/Manager





Modified Information

Version	Report No.	Revision Data	Summary
Ver.1.0	EA21090477F00101	/	Original Version

1. SUMMARY OF TEST RESULTS

EMISSION		
Description of Test Item	Standard & Limits	Results
Conducted Emission at Mains Terminals	FCC Part 15, Subpart B, Class B ANSI C63.4-2014	Pass
Radiated Emission	FCC Part 15, Subpart B, Class B ANSI C63.4-2014	Pass

2. GENERAL INFORMATION

2.1. Description of Device (EUT)

EUT	: LED Ceiling Light
Model Number	: PLU01R-0509T-YX, 5FLPR-SPX-XXXXXX, PLU01R-0712T-YX, 7FLPR-SPX-XXXXXX, PLU01R-0918T-YX, 9FLPR-SPX-XXXXXX, PLU01R-1224T-YX, 12FLPR-SPX-XXXXXX Please refer to the following model difference table
Test Model	: PLU01R-0509T-950, PLU01R-0712T-950, PLU01R-0918T-950, PLU01R-1224T-950
Test Voltage	: AC 120V/60Hz
Applicant	: ARTIKA FOR LIVING INC
Address	: 1756 50th avenue, Lachine, Quebec, Canada, H8T 2V5
Manufacturer	: ZHEJIANG TWINSEL ELECTRONIC TECHNOLOGY CO.,LTD
Address	: Tashan Industry Zone, Meilin Street, Ninghai County, Ningbo City, 315609, Zhejiang, P.R.China
Date of Received	: Sept. 27, 2021
Date of Test	: Sept. 27, 2021 to Oct. 21, 2021

Model difference table:

Size	Model	Customer model	Number of lamp beads	Input	Power	PCB Model	CCT
5 inch	PLU01R-0509T-YX	5FLPR-SPX-XXXXXX	45	120V/60Hz, 75mA	9W	SY-2016012-F-REV0.1	3000K/3500K/4000K/5000K
7 inch	PLU01R-0712T-YX	7FLPR-SPX-XXXXXX	45	120V/60Hz, 102mA	12W	SY-2016011-F-REV0.1	3000K/3500K/4000K/5000K
9 inch	PLU01R-0918T-YX	9FLPR-SPX-XXXXXX	56	120/60Hz, 154mA	18W	SY-2016010-F-REV0.1	3000K/3500K/4000K/5000K
12 inch	PLU01R-1224T-YX	12FLPR-SPX-XXXXXX	70	120/60Hz, 215mA	24W	SY-2016009-F-REV0.1	3000K/3500K/4000K/5000K

Note 1 : YX in the model designation could be any numbers, where each Y could be one number to indicate Color Rendering Index (like 8 represents CRI 80, 9 represents CRI 90), each X could be two numbers or two number ranges to indicate color temperature (like 30 represents 3000K, 50 represents 5000K).

Note 2: XXXXXX in the model designation could be any numbers or letters, which indicates customer code.

Note 3: All models have the same circuit principle, the difference is that the secondary components of the circuit are different, resulting in different power and product sizes in the series. We choose to test the maximum color temperature model of each size for testing.

2.2. Input / Output Ports

Port #	Name	Type*	Cable Max. >3m	Cable Shielded	Comments
0	Enclosure	N/E	--	--	None
1	AC Input port	AC	--	--	1 Port
2	USB Port	I/O	--	--	None
3	Aux Port	I/O	--	--	None
4	Earphone	I/O	--	--	None

* Note: Use abbreviations:

AC= AC Power Port

DC= DC Power Port

N/E= Non-Electrical

I/O= Signal Input or Output Port (Not Involved in Process Control)

TP= Telecommunication Ports

2.3. Independent Operation Modes

A. On

B. Off

2.4. Test Manner

Test Items	Test Voltage	Operation Modes	Worst case
Conducted Emission	AC 120V/60Hz	Mode A	On
Radiated Emission	AC 120V/60Hz	Mode A	On

2.5. Description of Test Facility

Site Description EMC Lab.	: Accredited by CNAS, 2017.06.26 The certificate is valid until 2022.10.28 The Laboratory has been assessed and proved to be in compliance with CNAS-CL01:2006 (identical to ISO/IEC 17025:2005) The Certificate Registration Number is L0468.
	Accredited by A2LA, 2018.03.15 The Certificate Number is 4422.01.
Name of Firm	: Dong Guan Anci Electronic Technology Co., Ltd.
Site Location	: Bldg 69, Majialong Industry Zone, Nanshan District, Shenzhen, Guangdong, China.

2.6. Test Software

Item Conducted Emission	Software : EZ-EMC Ver:ANCI-3A1
-------------------------------	-----------------------------------

Radiated Emission : EZ-EMC Ver:ANCI-3A1

2.7. Description of Support Device

N/A

2.8. Measurement Uncertainty

Test Item	Uncertainty
Conducted Emission Uncertainty	: 2.96dB(9k~150kHz Conduction 1#) 2.74dB(150k-30MHz Conduction 1#)
Radiated Emission Uncertainty (3m Chamber)	: 3.78dB (30M~1GHz Polarize: H) 4.27dB (30M~1GHz Polarize: V)

3. MEASURING DEVICE AND TEST EQUIPMENT

3.1. For Power Line Conducted Emission Measurement

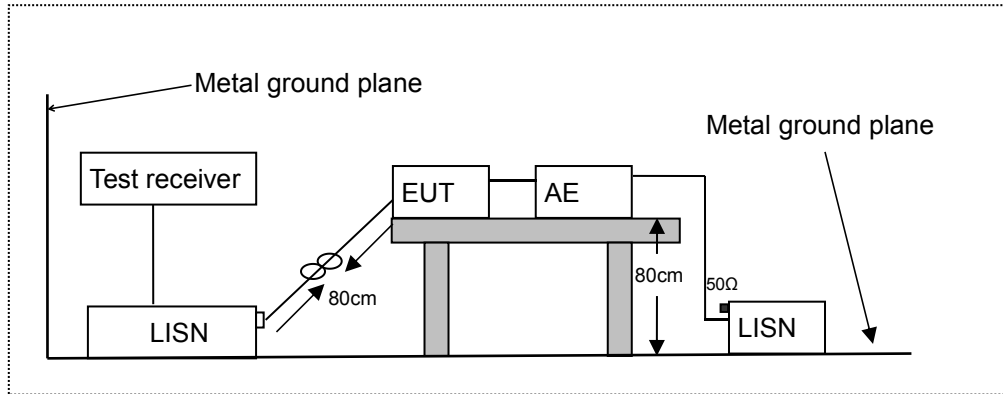
Item	EQUIPMENT TYPE	MFR	MODEL NUMBER	SERIAL NUMBER	Calibrated until
1.	L.I.S.N	SCHWARZBECK	NSLK 8127	8127-669	2022-05-22
2.	10 db attenuator	JFW	50FP-010-H4	4360846-427-1	2022-05-22
3.	RF Cable	N/A	N/A	2#	2022-05-22
4.	EMI Test Receiver	ROHDE&SCHWARZ	ESCI	101358	2022-05-22

3.2. For Radiated Emission Measurement

Item	Equipment	Manufacturer	Model No.	Serial No.	Calibrated until
5.	EMI Test Receiver	Rohde & Schwarz	ESPI	100502	2021-11-19
6.	Pre-Amplifier	HP	8447D	2727A06172	2022-05-22
7.	Bilog Antenna	Schwarzbeck	VULB9163	VULB9163-588	2022-05-22
8.	Loop Antenna	Schwarzbeck	FMZB 1516	1516-141	2022-05-22
9.	RF Cable	Gigalink Microwave	ZT40-2.92J-2.92 J-2m	N/A	2022-05-22
10.	RF Cable	Gigalink Microwave	ZT40-2.92J-2.92 J-0.3m	N/A	2022-05-22
11.	RF Cable	N/A	N/A	6#	2022-05-22
12.	3m Semi-anechoic Chamber	chengyu	9m*6m*6m	N/A	2022-05-22
13.	Test Software	Farad	EZ-EMC Ver:ANCI-3A1	N/A	N/A

4. POWER LINE CONDUCTED EMISSION MEASUREMENT

4.1. Block Diagram of Test Setup



LISN: Line Impedance Stabilization Network
 AE: Associated equipment
 EUT: Equipment under test

4.2. Limits

FCC Part 15, Subpart B, Class B

Frequency (MHz)	Limit (dB μ V)	
	Quasi-peak Level	Average Level
0.15 ~ 0.50	66.0 ~ 56.0 *	56.0 ~ 46.0 *
0.50 ~ 5.00	56.0	46.0
5.00 ~ 30.00	60.0	50.0

NOTE1-The lower limit shall apply at the transition frequencies.
 NOTE2-The limit decreases linearly with the logarithm of the frequency in the range 0.15MHz to 0.50MHz.

4.3. Test Procedure

The EUT was placed on a desk 0.8 m height from the metal ground plane and 0.4 m from the conducting wall of the shielding room and it was kept at least 0.8 m from any other grounded conducting surface. The size of the table will nominally be 1.5 m x1.0 m.

The rear of the arrangement shall be flush with the back of the supporting tabletop unless that would not be possible or typical of normal use.

All units of equipment forming the system under test (includes the EUT as well as connected peripherals and associated equipment or devices) shall be arranged such that a nominal 0.1 m separation is achieved between the neighboring units.

Connect EUT to the power mains through a line impedance stabilization network (LISN). Where the mains cable supplied by the manufacturer is longer than 1 m, the excess should be folded at the centre into a bundle no longer than 0.4 m, so that its length is shortened to 1 m.

All the support units are connecting to the other LISN.

The LISN provides 50 ohm coupling impedance for the measuring instrument.

Both sides of AC line were checked for maximum conducted interference.

The frequency range from 150 kHz to 30 MHz was sweep.

Set the test-receiver system to quasi peak detect function and average detect function, and to

measure the conducted emissions values.

Test results were obtained from the following equation:

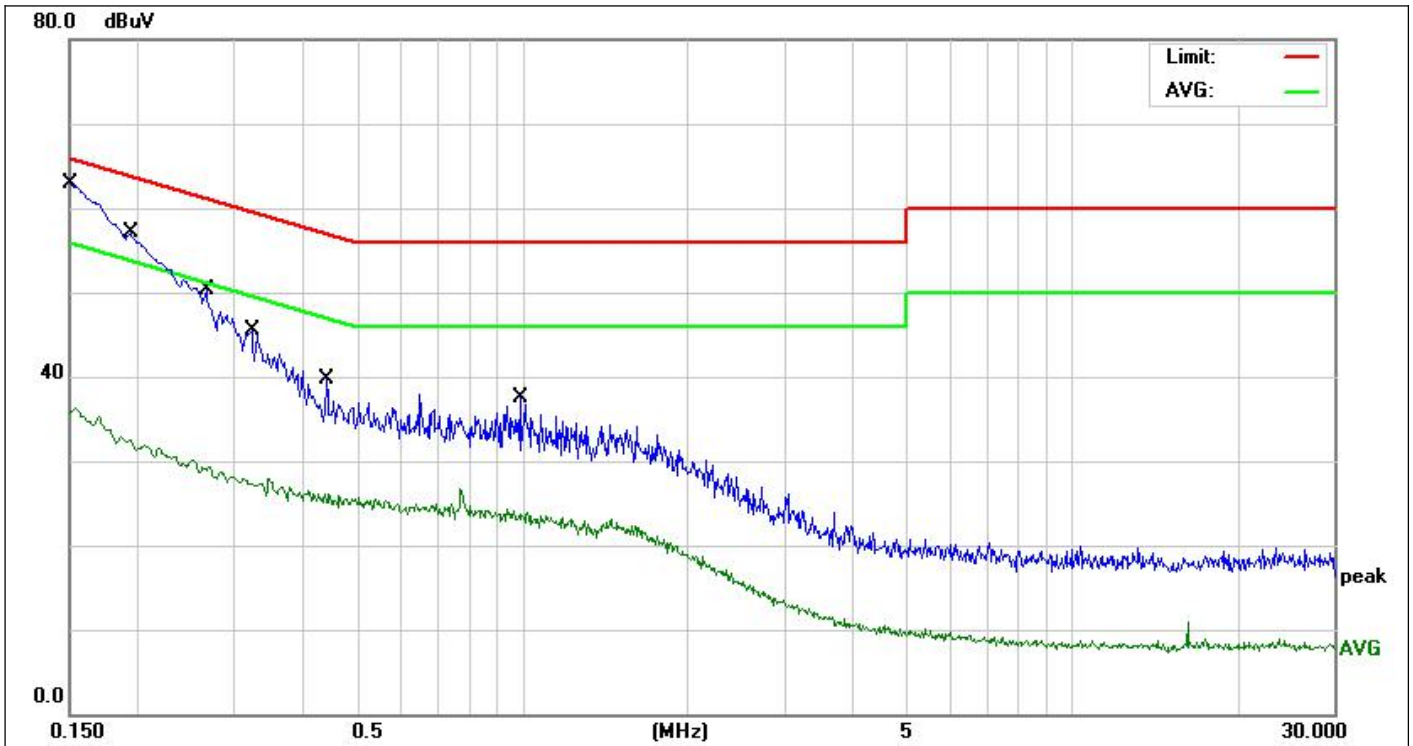
Emission Level (dB μ V) = LISN Factor (dB) + Cable Loss (dB) + Reading (dB μ V)

Margin (dB) = Emission Level (dB μ V) - Limit (dB μ V)

4.4. Measuring Results

PASS.

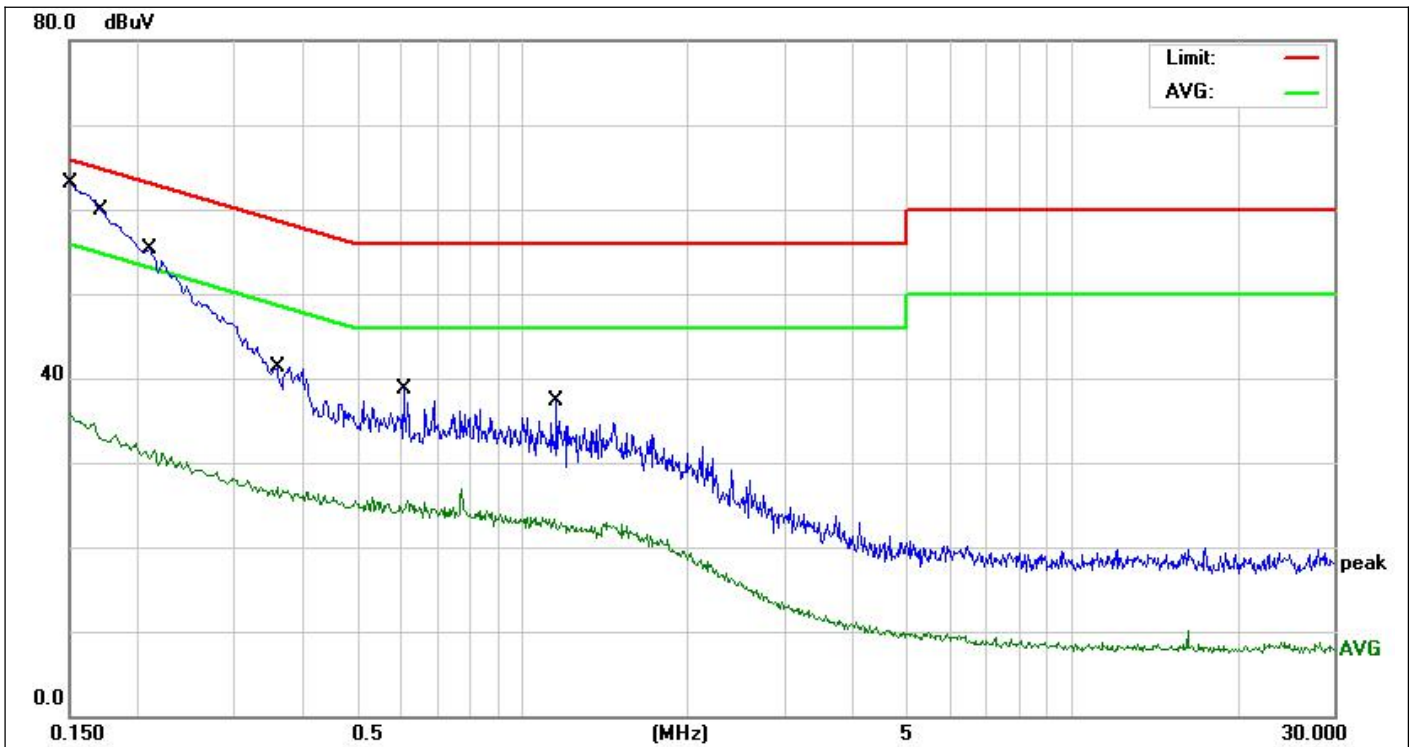
Please refer to following pages.



Site:	843	Phase:	L1	Temperature(C):	26(C)
Limit:	FCC PART 15B Conduction(QP)	Test Time:	2021-10-20	Humidity(%):	60%
EUT:	LED Ceiling Light	Power Rating:	AC 120V/60Hz	Test Engineer:	Jack
M/N.:	PLU01R-0509T-950	Note:			
Mode:	ON				

No.	Frequency (MHz)	Reading Level(dBuV)	Factor (dB)	Measurement(dBuV)	Limit (dBuV)	Over (dB)	Detector	Comment
1 *	0.1500	46.96	9.64	56.60	65.99	-9.39	QP	
2	0.1500	26.10	9.64	35.74	55.99	-20.25	AVG	
3	0.1940	40.54	9.66	50.20	63.86	-13.66	QP	
4	0.1940	22.91	9.66	32.57	53.86	-21.29	AVG	
5	0.2660	40.54	9.66	50.20	61.24	-11.04	QP	
6	0.2660	19.64	9.66	29.30	51.24	-21.94	AVG	
7	0.3220	35.87	9.68	45.55	59.65	-14.10	QP	
8	0.3220	17.66	9.68	27.34	49.65	-22.31	AVG	
9	0.4420	30.03	9.72	39.75	57.02	-17.27	QP	
10	0.4420	16.38	9.72	26.10	47.02	-20.92	AVG	
11	0.9940	27.70	9.82	37.52	56.00	-18.48	QP	
12	0.9940	14.07	9.82	23.89	46.00	-22.11	AVG	

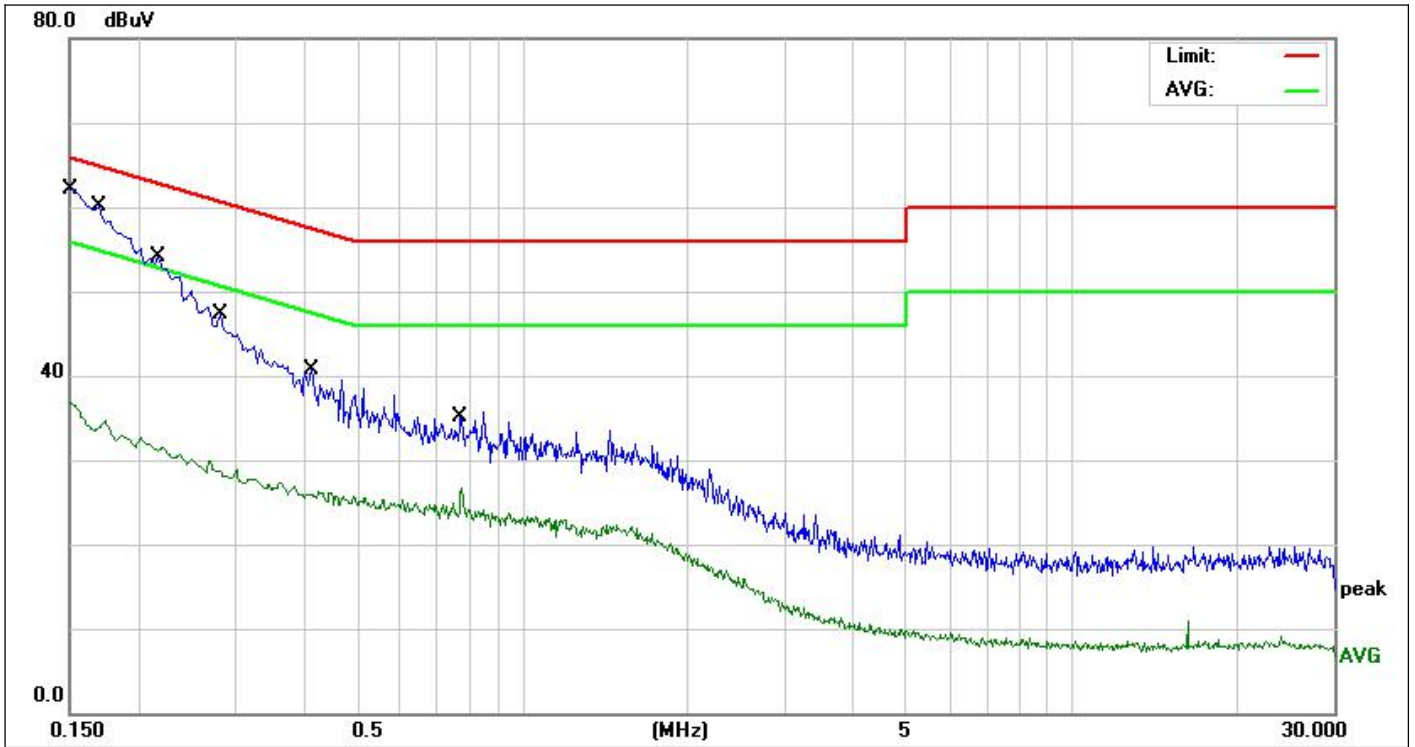
*:Maximum data x:Over limit !:over margin



Site:	843	Phase:	N	Temperature(C):	26(C)
Limit:	FCC PART 15B Conduction(QP)	Test Time:	2021-10-20	Humidity(%):	60%
EUT:	LED Ceiling Light	Power Rating:	AC 120V/60Hz		
M/N.:	PLU01R-0509T-950	Test Engineer:	Jack		
Mode:	ON				
Note:					

No.	Frequency (MHz)	Reading Level(dBuV)	Factor (dB)	Measurement(dBuV)	Limit (dBuV)	Over (dB)	Detector	Comment
1 *	0.1500	46.86	9.64	56.50	65.99	-9.49	QP	
2	0.1500	26.17	9.64	35.81	55.99	-20.18	AVG	
3	0.1722	43.25	9.65	52.90	64.85	-11.95	QP	
4	0.1722	23.72	9.65	33.37	54.85	-21.48	AVG	
5	0.2100	38.44	9.66	48.10	63.20	-15.10	QP	
6	0.2100	21.75	9.66	31.41	53.20	-21.79	AVG	
7	0.3580	31.60	9.70	41.30	58.77	-17.47	QP	
8	0.3580	17.44	9.70	27.14	48.77	-21.63	AVG	
9	0.6100	28.99	9.75	38.74	56.00	-17.26	QP	
10	0.6100	15.68	9.75	25.43	46.00	-20.57	AVG	
11	1.1580	27.45	9.86	37.31	56.00	-18.69	QP	
12	1.1580	13.50	9.86	23.36	46.00	-22.64	AVG	

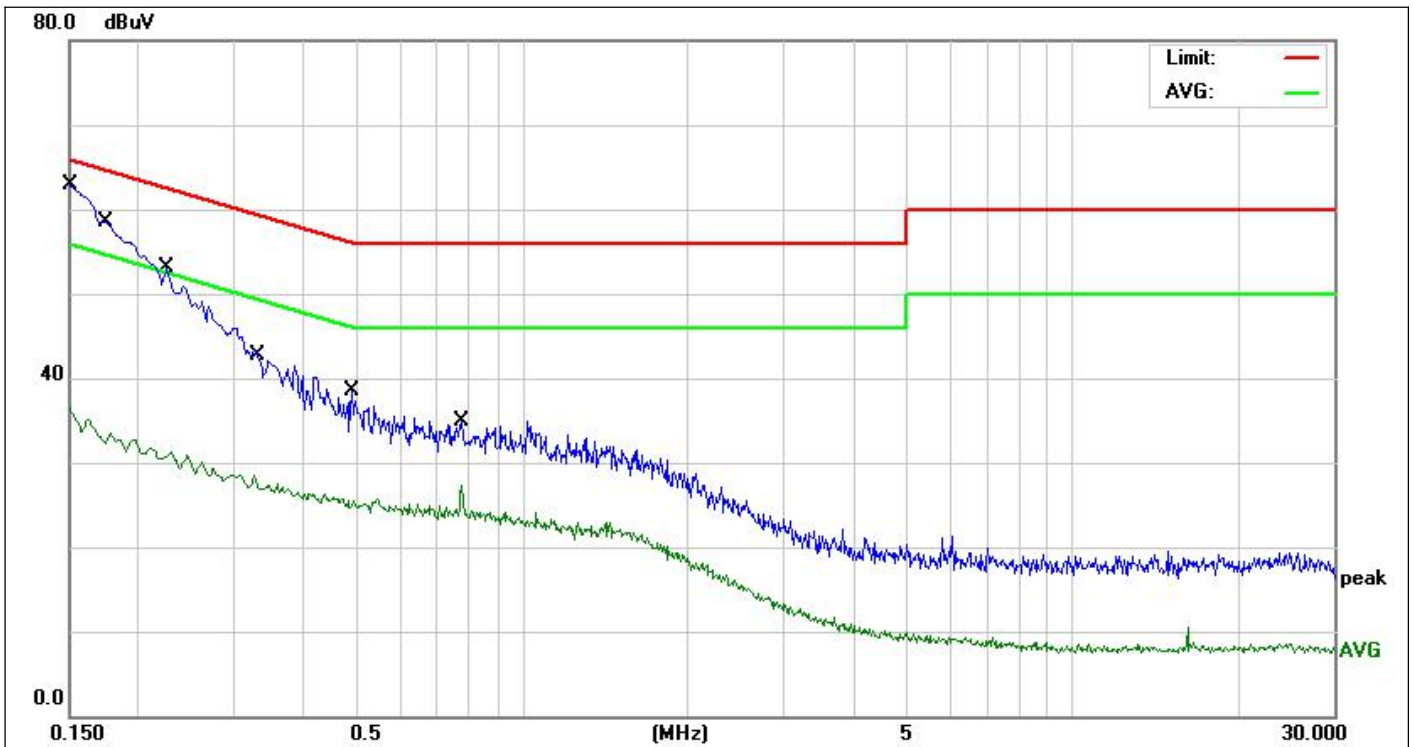
*:Maximum data x:Over limit !:over margin



Site:	843	Phase:	L1	Temperature(C):	26(C)
Limit:	FCC PART 15B Conduction(QP)	Test Time:	2021-10-20	Humidity(%):	60%
EUT:	LED Ceiling Light	Power Rating:	AC 120V/60Hz	Test Engineer:	Jack
M/N.:	PLU01R-0712T-950				
Mode:	ON				
Note:					

No.	Frequency (MHz)	Reading Level(dBuV)	Factor (dB)	Measurement(dBuV)	Limit (dBuV)	Over (dB)	Detector	Comment
1 *	0.1500	46.43	9.64	56.07	65.99	-9.92	QP	
2	0.1500	26.05	9.64	35.69	55.99	-20.30	AVG	
3	0.1700	42.83	9.65	52.48	64.96	-12.48	QP	
4	0.1700	23.95	9.65	33.60	54.96	-21.36	AVG	
5	0.2180	36.72	9.66	46.38	62.89	-16.51	QP	
6	0.2180	21.13	9.66	30.79	52.89	-22.10	AVG	
7	0.2819	30.59	9.66	40.25	60.76	-20.51	QP	
8	0.2819	18.77	9.66	28.43	50.76	-22.33	AVG	
9	0.4140	23.10	9.71	32.81	57.57	-24.76	QP	
10	0.4140	16.21	9.71	25.92	47.57	-21.65	AVG	
11	0.7740	20.64	9.79	30.43	56.00	-25.57	QP	
12	0.7740	15.87	9.79	25.66	46.00	-20.34	AVG	

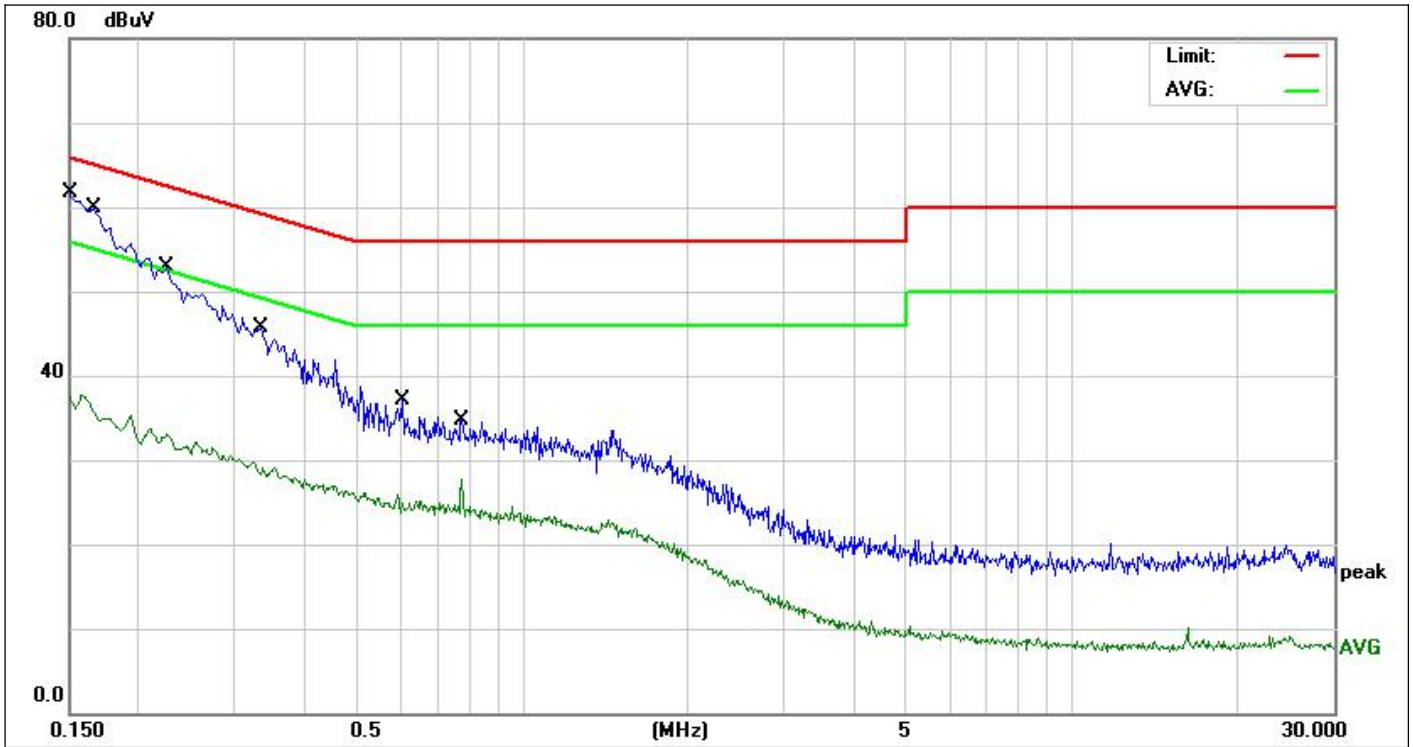
*:Maximum data x:Over limit !:over margin



Site:	843	Phase:	N	Temperature(C):	26(C)
Limit:	FCC PART 15B Conduction(QP)	Test Time:	2021-10-20	Humidity(%):	60%
EUT:	LED Ceiling Light	Power Rating:	AC 120V/60Hz		
M/N.:	PLU01R-0712T-950	Test Engineer:	Jack		
Mode:	ON				
Note:					

No.	Frequency (MHz)	Reading Level(dBuV)	Factor (dB)	Measurement(dBuV)	Limit (dBuV)	Over (dB)	Detector	Comment
1 *	0.1500	46.36	9.64	56.00	65.99	-9.99	QP	
2	0.1500	25.90	9.64	35.54	55.99	-20.45	AVG	
3	0.1758	42.03	9.65	51.68	64.68	-13.00	QP	
4	0.1758	23.53	9.65	33.18	54.68	-21.50	AVG	
5	0.2260	35.89	9.66	45.55	62.59	-17.04	QP	
6	0.2260	20.89	9.66	30.55	52.59	-22.04	AVG	
7	0.3321	26.99	9.69	36.68	59.40	-22.72	QP	
8	0.3321	17.56	9.69	27.25	49.40	-22.15	AVG	
9	0.4900	22.81	9.73	32.54	56.17	-23.63	QP	
10	0.4900	17.75	9.73	27.48	46.17	-18.69	AVG	
11	0.7780	21.06	9.79	30.85	56.00	-25.15	QP	
12	0.7780	16.29	9.79	26.08	46.00	-19.92	AVG	

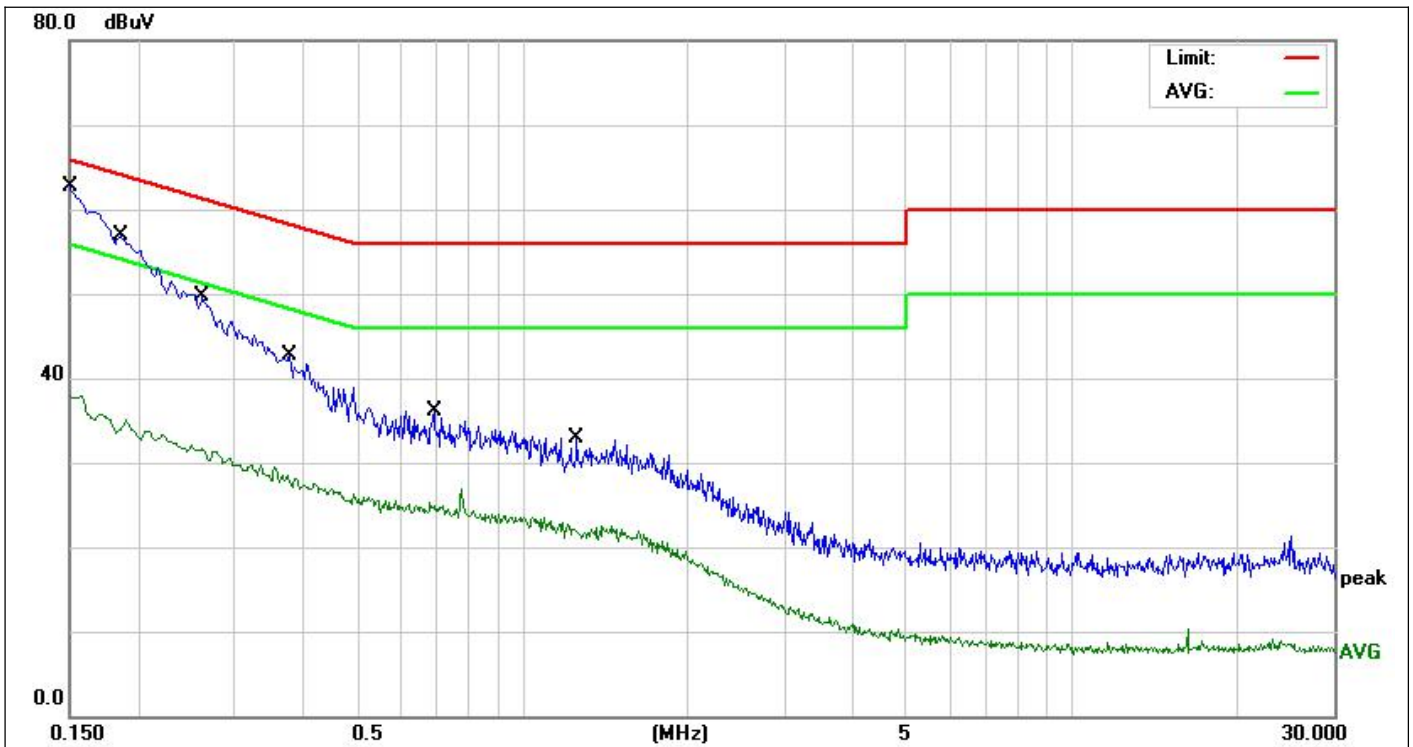
*:Maximum data x:Over limit !:over margin



Site:	843	Phase:	L1	Temperature(C):	26(C)
Limit:	FCC PART 15B Conduction(QP)	Test Time:	2021-10-20	Humidity(%):	60%
EUT:	LED Ceiling Light	Power Rating:	AC 120V/60Hz		
M/N.:	PLU01R-0918T-950	Test Engineer:	Jack		
Mode:	ON				
Note:					

No.	Frequency (MHz)	Reading Level(dBuV)	Factor (dB)	Measurement(dBuV)	Limit (dBuV)	Over (dB)	Detector	Comment
1 *	0.1500	45.47	9.64	55.11	65.99	-10.88	QP	
2	0.1500	27.71	9.64	37.35	55.99	-18.64	AVG	
3	0.1660	42.77	9.65	52.42	65.15	-12.73	QP	
4	0.1660	25.85	9.65	35.50	55.15	-19.65	AVG	
5	0.2260	35.71	9.66	45.37	62.59	-17.22	QP	
6	0.2260	22.40	9.66	32.06	52.59	-20.53	AVG	
7	0.3339	28.39	9.69	38.08	59.35	-21.27	QP	
8	0.3339	18.95	9.69	28.64	49.35	-20.71	AVG	
9	0.6060	20.13	9.75	29.88	56.00	-26.12	QP	
10	0.6060	14.94	9.75	24.69	46.00	-21.31	AVG	
11	0.7780	21.16	9.79	30.95	56.00	-25.05	QP	
12	0.7780	16.42	9.79	26.21	46.00	-19.79	AVG	

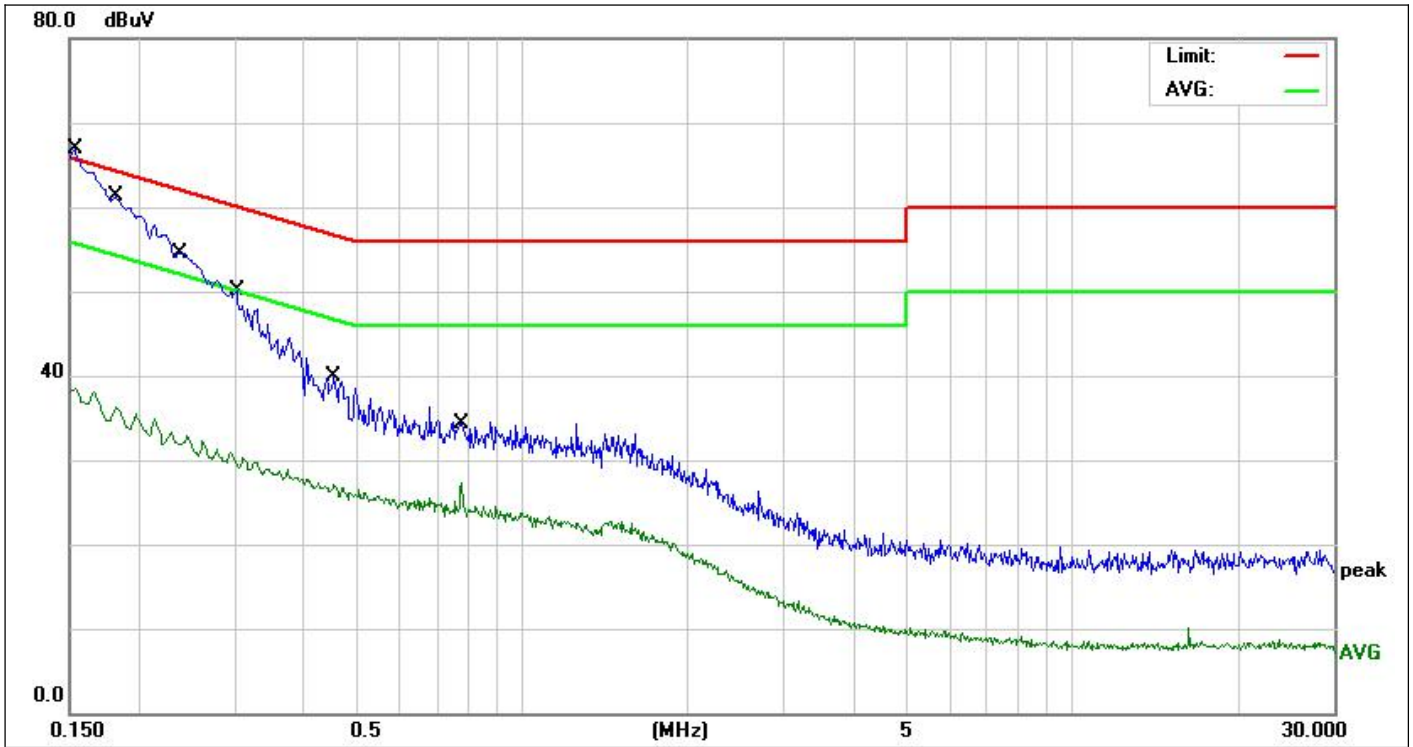
*:Maximum data x:Over limit !:over margin



Site:	843	Phase:	N	Temperature(C):	26(C)
Limit:	FCC PART 15B Conduction(QP)	Test Time:	2021-10-20	Humidity(%):	60%
EUT:	LED Ceiling Light	Power Rating:	AC 120V/60Hz		
M/N.:	PLU01R-0918T-950	Test Engineer:	Jack		
Mode:	ON				
Note:					

No.	Frequency (MHz)	Reading Level(dBuV)	Factor (dB)	Measurement(dBuV)	Limit (dBuV)	Over (dB)	Detector	Comment
1 *	0.1500	45.78	9.64	55.42	65.99	-10.57	QP	
2	0.1500	27.74	9.64	37.38	55.99	-18.61	AVG	
3	0.1860	39.96	9.66	49.62	64.21	-14.59	QP	
4	0.1860	24.28	9.66	33.94	54.21	-20.27	AVG	
5	0.2620	32.72	9.66	42.38	61.36	-18.98	QP	
6	0.2620	21.10	9.66	30.76	51.36	-20.60	AVG	
7	0.3780	26.30	9.71	36.01	58.32	-22.31	QP	
8	0.3780	17.95	9.71	27.66	48.32	-20.66	AVG	
9	0.6900	19.62	9.76	29.38	56.00	-26.62	QP	
10	0.6900	14.56	9.76	24.32	46.00	-21.68	AVG	
11	1.2620	17.05	9.88	26.93	56.00	-29.07	QP	
12	1.2620	11.99	9.88	21.87	46.00	-24.13	AVG	

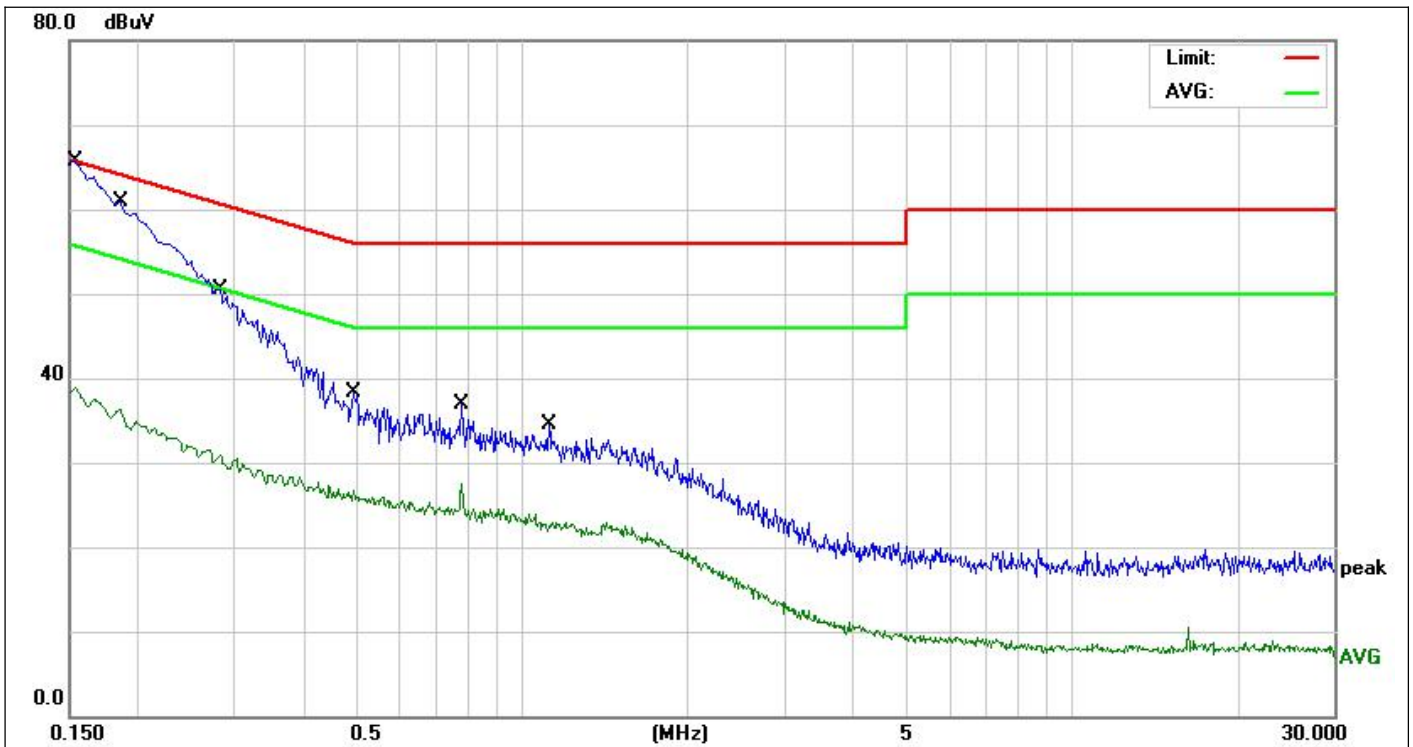
*:Maximum data x:Over limit !:over margin



Site:	843	Phase:	L1	Temperature(C):	26(C)
Limit:	FCC PART 15B Conduction(QP)	Test Time:	2021-10-20	Humidity(%):	60%
EUT:	LED Ceiling Light	Power Rating:	AC 120V/60Hz	Test Engineer:	Jack
M/N.:	PLU01R-1224T-950	Mode:	ON	Note:	

No.	Frequency (MHz)	Reading Level(dBuV)	Factor (dB)	Measurement(dBuV)	Limit (dBuV)	Over (dB)	Detector	Comment
1 *	0.1539	49.50	9.64	59.14	65.78	-6.64	QP	
2	0.1539	28.39	9.64	38.03	55.78	-17.75	AVG	
3	0.1819	44.82	9.65	54.47	64.39	-9.92	QP	
4	0.1819	25.65	9.65	35.30	54.39	-19.09	AVG	
5	0.2380	38.26	9.66	47.92	62.16	-14.24	QP	
6	0.2380	22.43	9.66	32.09	52.16	-20.07	AVG	
7	0.3020	31.95	9.66	41.61	60.19	-18.58	QP	
8	0.3020	20.02	9.66	29.68	50.19	-20.51	AVG	
9	0.4540	22.95	9.72	32.67	56.80	-24.13	QP	
10	0.4540	16.65	9.72	26.37	46.80	-20.43	AVG	
11	0.7780	21.46	9.79	31.25	56.00	-24.75	QP	
12	0.7780	16.56	9.79	26.35	46.00	-19.65	AVG	

*:Maximum data x:Over limit !:over margin



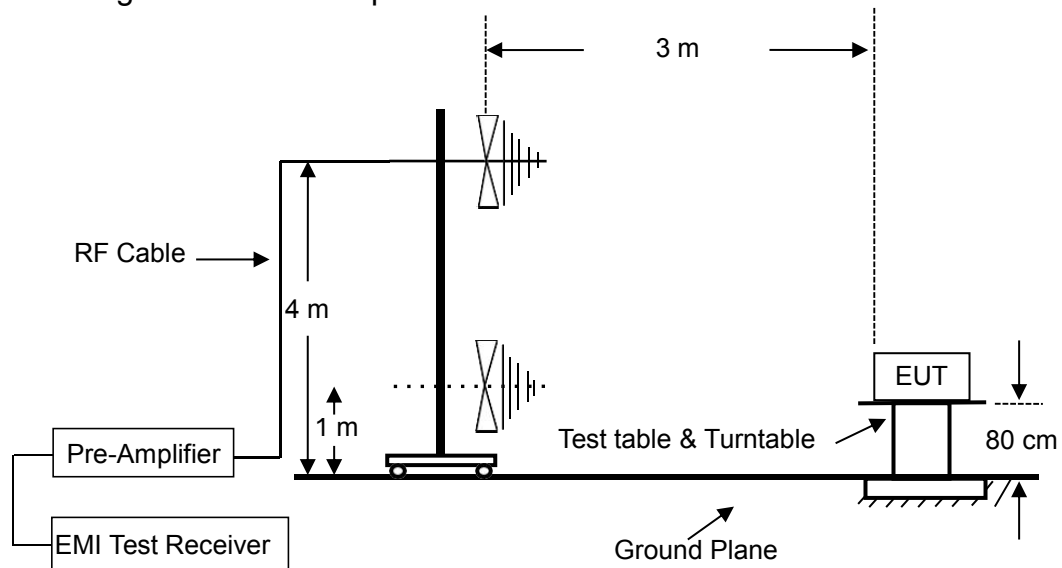
Site:	843	Phase:	N	Temperature(C):	26(C)
Limit:	FCC PART 15B Conduction(QP)	Test Time:	2021-10-20	Humidity(%):	60%
EUT:	LED Ceiling Light	Power Rating:	AC 120V/60Hz		
M/N.:	PLU01R-1224T-950	Test Engineer:	Jack		
Mode:	ON				
Note:					

No.	Frequency (MHz)	Reading Level(dBuV)	Factor (dB)	Measurement(dBuV)	Limit (dBuV)	Over (dB)	Detector	Comment
1 *	0.1539	49.28	9.64	58.92	65.78	-6.86	QP	
2	0.1539	28.21	9.64	37.85	55.78	-17.93	AVG	
3	0.1860	44.01	9.66	53.67	64.21	-10.54	QP	
4	0.1860	25.42	9.66	35.08	54.21	-19.13	AVG	
5	0.2819	33.57	9.66	43.23	60.76	-17.53	QP	
6	0.2819	20.62	9.66	30.28	50.76	-20.48	AVG	
7	0.4940	23.65	9.73	33.38	56.10	-22.72	QP	
8	0.4940	18.59	9.73	28.32	46.10	-17.78	AVG	
9	0.7780	21.33	9.79	31.12	56.00	-24.88	QP	
10	0.7780	16.44	9.79	26.23	46.00	-19.77	AVG	
11	1.1180	17.63	9.85	27.48	56.00	-28.52	QP	
12	1.1180	12.52	9.85	22.37	46.00	-23.63	AVG	

*:Maximum data x:Over limit !:over margin

5. RADIATED EMISSION MEASUREMENT (UP TO 1GHz)

5.1. Block Diagram of Test Setup



5.2. Radiated Limit

FCC Part 15, Subpart B, Class B

Frequency MHz	Distance Meters	Field Strengths Limit	
		$\mu\text{V}/\text{m}$	$\text{dB}(\mu\text{V})/\text{m}$
30 ~ 88	3	100	40.0
88 ~ 216	3	150	43.5
216 ~ 960	3	200	46.0
960 ~ 1000	3	500	54.0

5.3. Test Procedure

The EUT was placed on a non-conductive table whose total height equaled 80cm. All units of equipment forming the system under test (includes the EUT as well as connected peripherals and associated equipment or devices) shall be arranged such that a nominal 0.1 m separation is achieved between the neighboring units. Where the mains cable supplied by the manufacturer is longer than 1 m, the excess should be folded at the centre into a bundle no longer than 0.4 m, so that its length is shortened to 1 m.

The EUT was set 3 meters away from the receiving antenna that was mounted on a non-conductive mast. The antenna can move up and down between 1 to 4 meters to find out the maximum emission level.

The turntable can rotate 360 degree to determine the position of the maximum emission level.

The initial testing identified the frequency that has the highest disturbance relative to the limit while operating the EUT in typical modes of operation and cable positions in a test setup representative of typical system configuration.

The identification of the frequency of highest emission with respect to the limit was found by investigating emissions at a number of significant frequencies. The probable frequency of maximum emission had been found and that the associated cable and EUT configuration and mode of operation had been identified.

The bandwidth of the Receiver is set at 120 kHz.

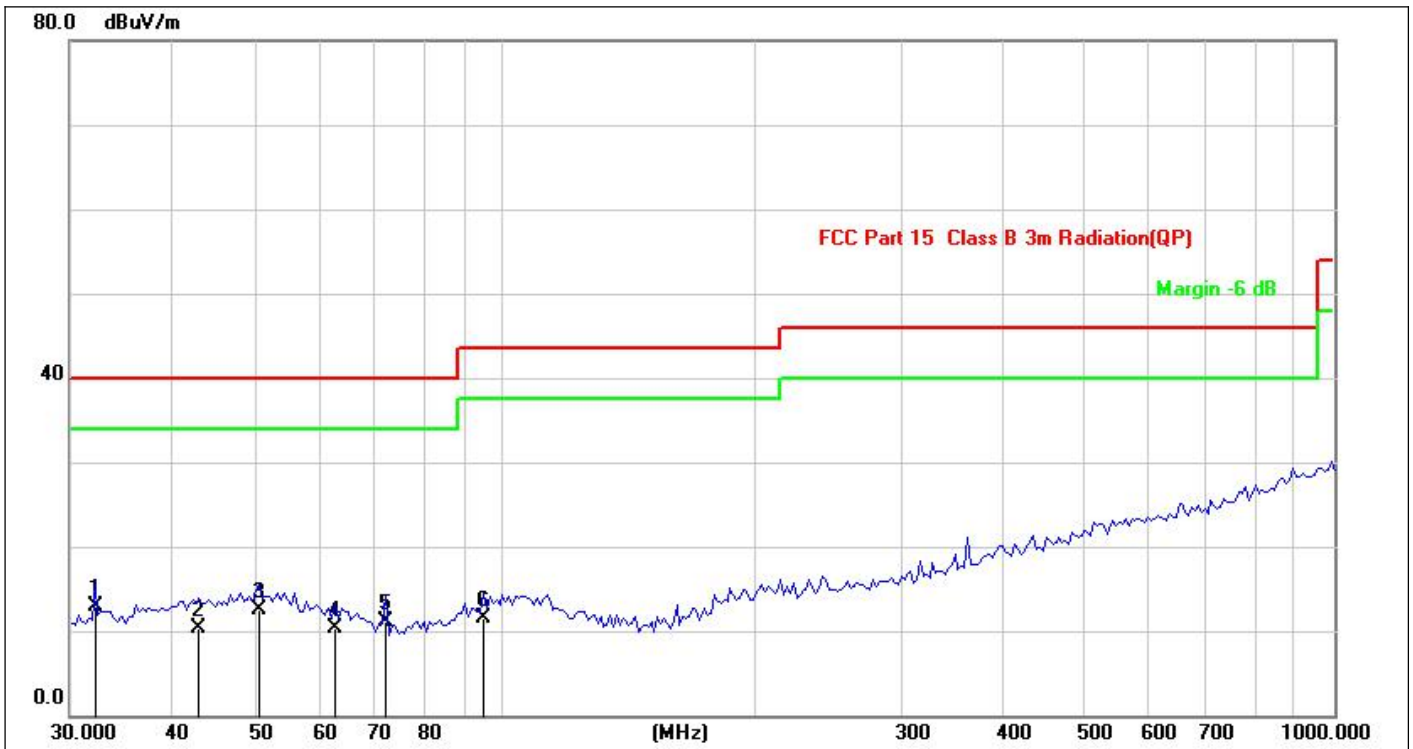


Test results were obtained from the following equation:
Emission level (dB μ V/m) = Antenna Factor - Amp Factor + Cable Loss + Reading
Margin (dB) = Emission Level (dB μ V/m) - Limit (dB μ V/m)

5.4. Measuring Results

PASS.

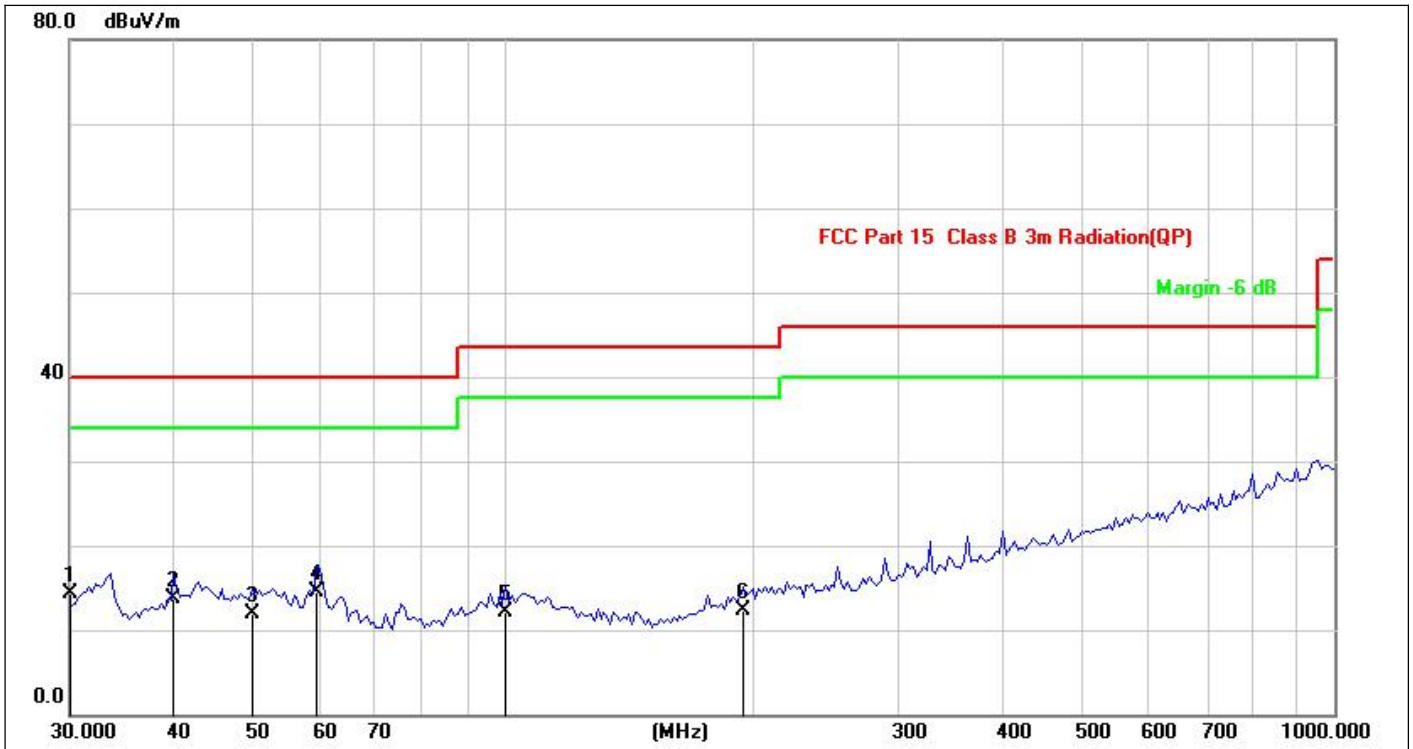
Please refer to following pages.



Site:	843.3	Antenna::	Horizontal	Temperature(C)::	26(C)
Limit:	FCC Part 15 B Radiation(QP)	Test Time:		Humidity(%)::	60%
EUT:	LED Ceiling Light	Power Rating:		Test Engineer:	Bast
M/N.:	PLU01R-0509T-950				
Mode:	ON				
Note:					

No.	Frequency (MHz)	Reading Level(dBuV)	Factor (dB)	Measurement(dBuV)	Limit (dBuV)	Over (dB)	Detector	Comment
1 *	32.1795	27.33	-14.37	12.96	40.00	-27.04	QP	
2	42.9750	22.94	-12.69	10.25	40.00	-29.75	QP	
3	50.7637	24.21	-11.76	12.45	40.00	-27.55	QP	
4	62.6507	23.91	-13.61	10.30	40.00	-29.70	QP	
5	72.0843	26.20	-15.05	11.15	40.00	-28.85	QP	
6	94.5941	24.25	-12.65	11.60	43.50	-31.90	QP	

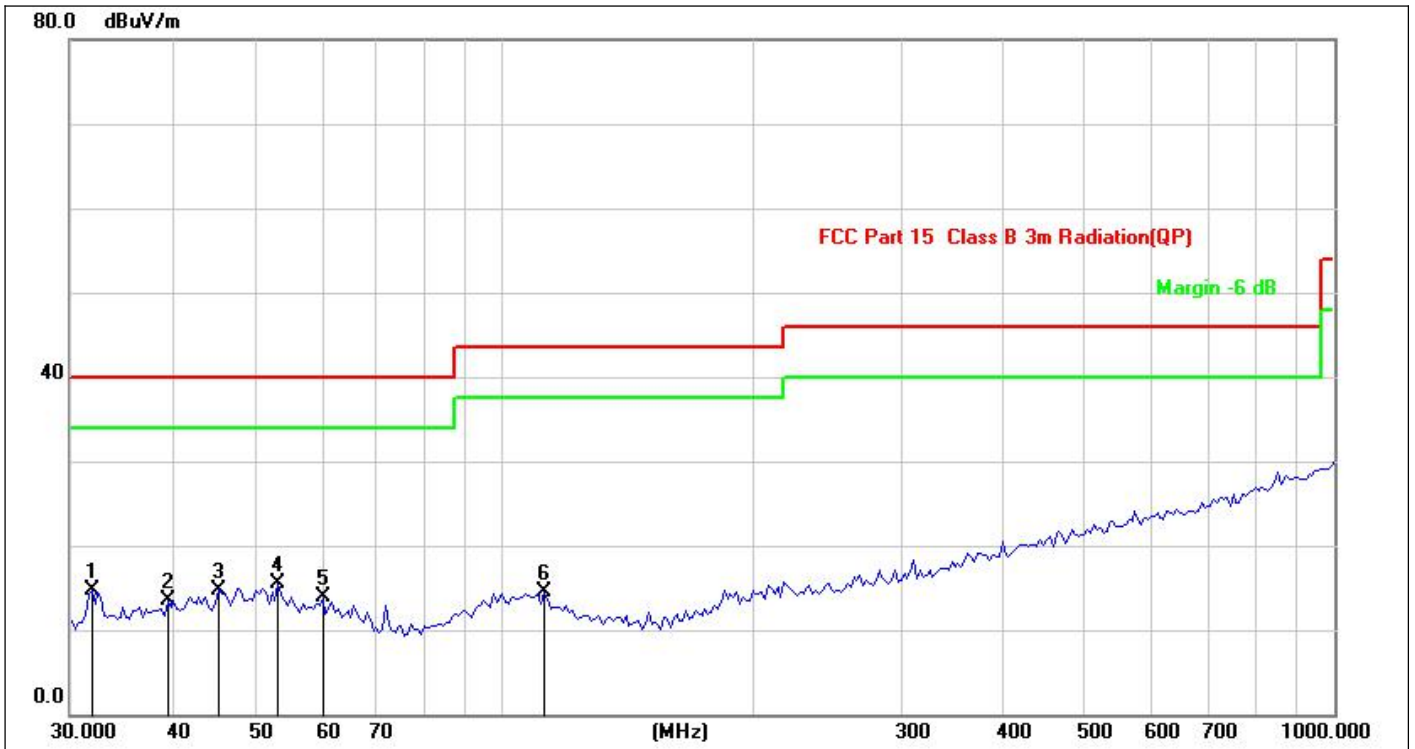
*:Maximum data x:Over limit !:over margin



Site:	843.3	Antenna::Vertical	Temperature(C):26(C)
Limit:	FCC Part 15 B Radiation(QP)		Humidity(%):60%
EUT:	LED Ceiling Light	Test Time:	2021-10-21
M/N.:	PLU01R-0509T-950	Power Rating:	AC 120V/60Hz
Mode:	ON	Test Engineer:	Bast
Note:			

No.	Frequency (MHz)	Reading Level(dBuV)	Factor (dB)	Measurement(dBuV)	Limit (dBuV)	Over (dB)	Detector	Comment
1	30.0000	28.96	-14.71	14.25	40.00	-25.75	QP	
2	40.0644	26.87	-13.12	13.75	40.00	-26.25	QP	
3	49.8814	23.52	-11.67	11.85	40.00	-28.15	QP	
4 *	59.4405	27.57	-13.03	14.54	40.00	-25.46	QP	
5	100.5806	23.82	-11.77	12.05	43.50	-31.45	QP	
6	194.1128	23.50	-11.25	12.25	43.50	-31.25	QP	

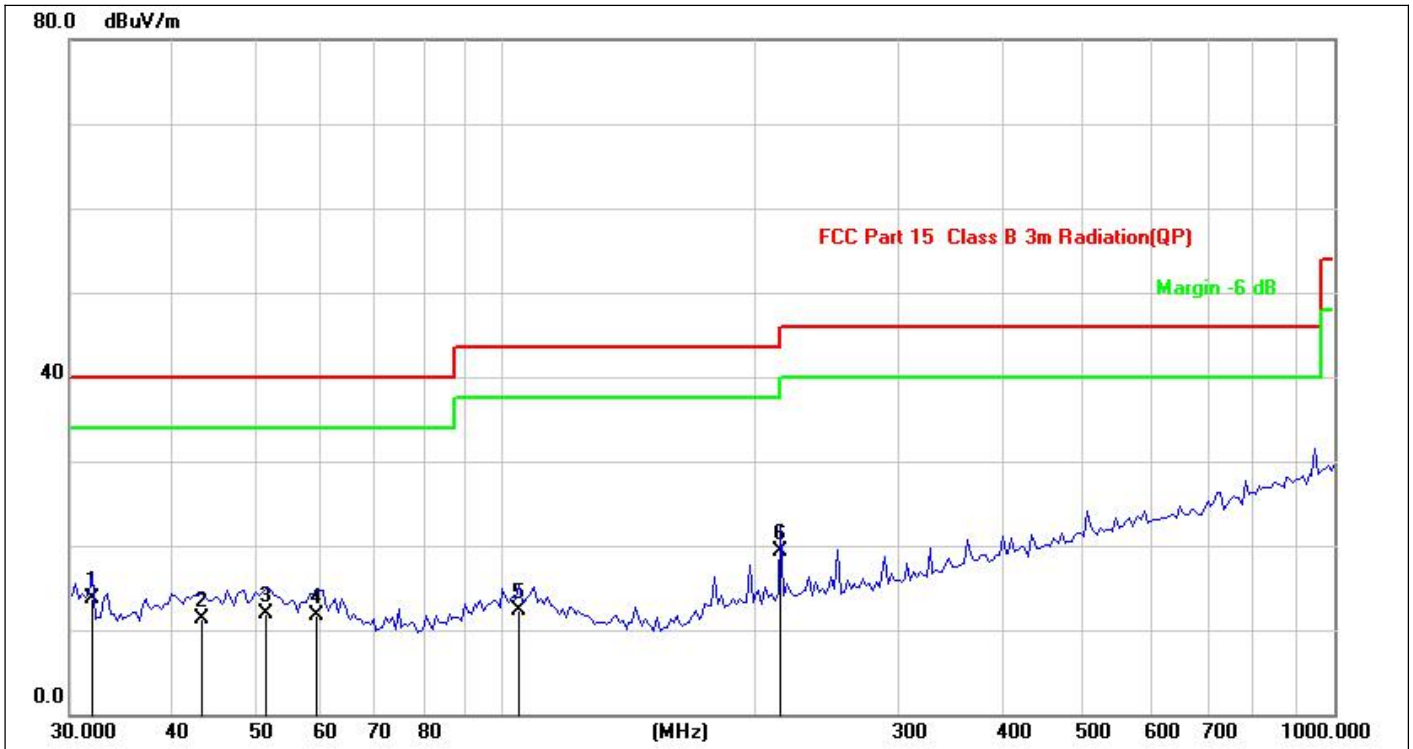
*:Maximum data x:Over limit !:over margin



Site:	843.3	Antenna::Horizontal	Temperature(C):26(C)
Limit:	FCC Part 15 B Radiation(QP)		Humidity(%):60%
EUT:	LED Ceiling Light	Test Time:	2021-10-21
M/N.:	PLU01R-0712T-950	Power Rating:	AC 120V/60Hz
Mode:	ON	Test Engineer:	Bast
Note:			

No.	Frequency (MHz)	Reading Level(dBuV)	Factor (dB)	Measurement(dBuV)	Limit (dBuV)	Over (dB)	Detector	Comment
1	31.8986	29.16	-14.41	14.75	40.00	-25.25	QP	
2	39.3681	26.69	-13.23	13.46	40.00	-26.54	QP	
3	45.2960	27.14	-12.34	14.80	40.00	-25.20	QP	
4 *	53.5052	27.71	-12.16	15.55	40.00	-24.45	QP	
5	60.4919	27.01	-13.20	13.81	40.00	-26.19	QP	
6	111.7380	26.58	-12.04	14.54	43.50	-28.96	QP	

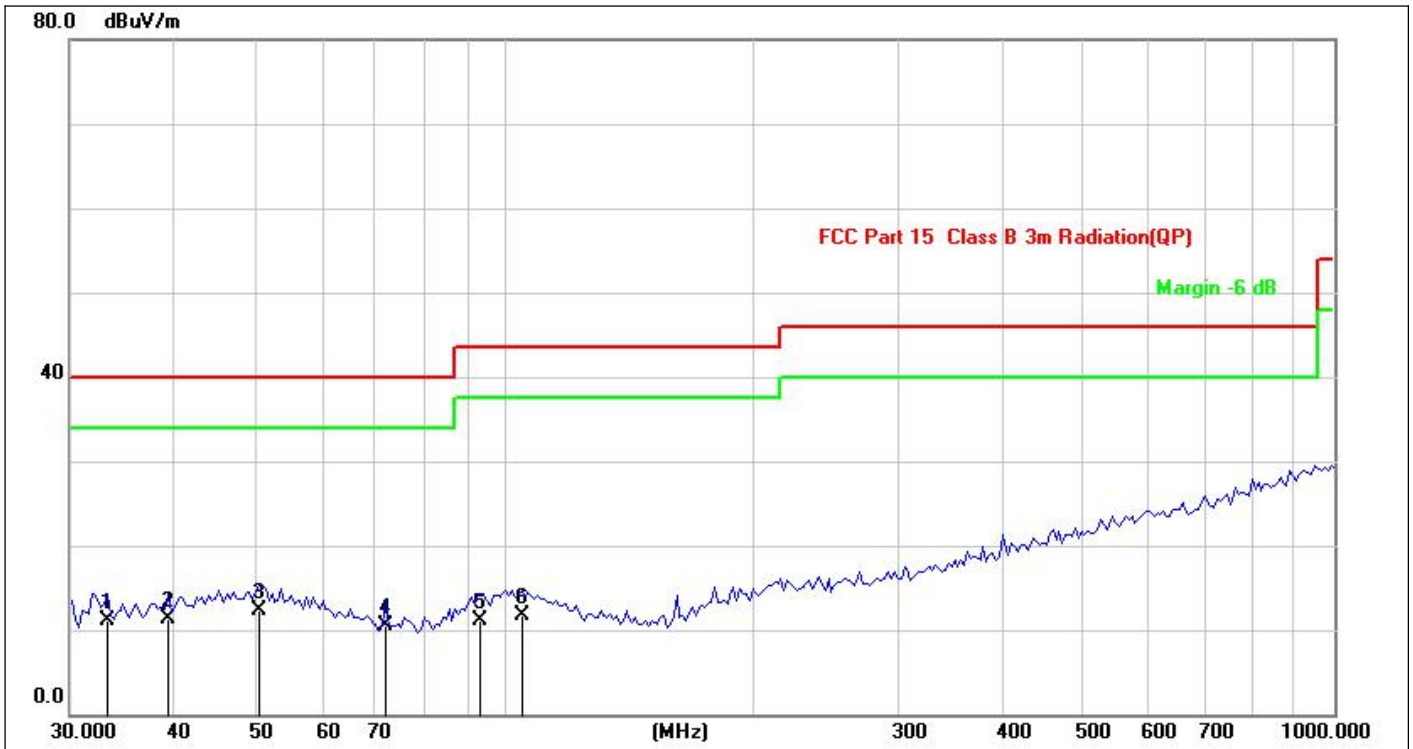
*:Maximum data x:Over limit !:over margin



Site:	843.3	Antenna::Vertical	Temperature(C):26(C)
Limit:	FCC Part 15 B Radiation(QP)		Humidity(%):60%
EUT:	LED Ceiling Light	Test Time:	2021-10-21
M/N.:	PLU01R-0712T-950	Power Rating:	AC 120V/60Hz
Mode:	ON	Test Engineer:	Bast
Note:			

No.	Frequency (MHz)	Reading Level(dBuV)	Factor (dB)	Measurement(dBuV)	Limit (dBuV)	Over (dB)	Detector	Comment
1	31.8986	28.18	-14.41	13.77	40.00	-26.23	QP	
2	43.3534	23.98	-12.63	11.35	40.00	-28.65	QP	
3	51.6616	23.75	-11.90	11.85	40.00	-28.15	QP	
4	59.4405	24.74	-13.03	11.71	40.00	-28.29	QP	
5	104.1701	23.99	-11.74	12.25	43.50	-31.25	QP	
6 *	215.6456	30.01	-10.71	19.30	43.50	-24.20	QP	

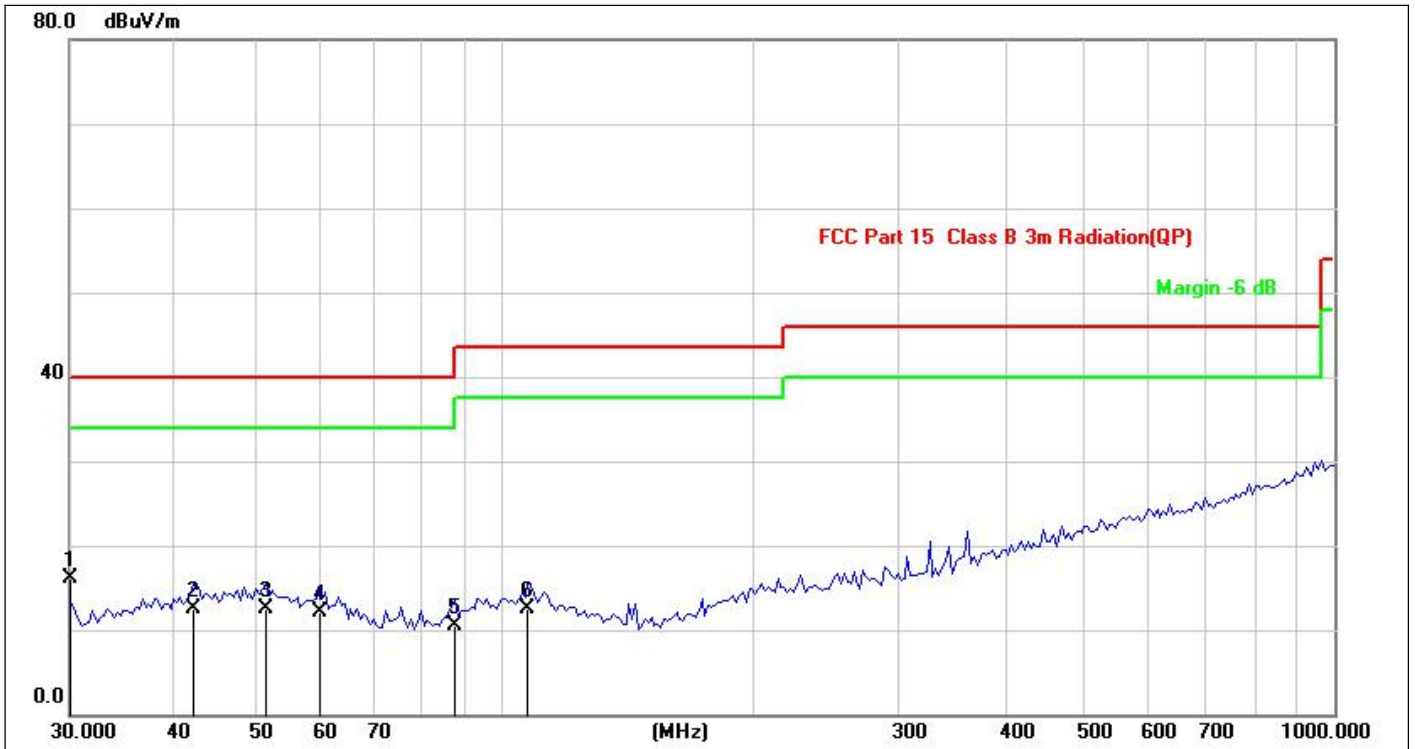
*:Maximum data x:Over limit !:over margin



Site:	843.3	Antenna::Horizontal	Temperature(C):26(C)
Limit:	FCC Part 15 B Radiation(QP)		Humidity(%):60%
EUT:	LED Ceiling Light	Test Time:	2021-10-21
M/N.:	PLU01R-0918T-950	Power Rating:	AC 120V/60Hz
Mode:	ON	Test Engineer:	Bast
Note:			

No.	Frequency (MHz)	Reading Level(dBuV)	Factor (dB)	Measurement(dBuV)	Limit (dBuV)	Over (dB)	Detector	Comment
1	33.3279	25.22	-14.18	11.04	40.00	-28.96	QP	
2	39.3681	24.57	-13.23	11.34	40.00	-28.66	QP	
3 *	50.7637	24.05	-11.76	12.29	40.00	-27.71	QP	
4	72.0843	25.52	-15.05	10.47	40.00	-29.53	QP	
5	93.7685	23.98	-12.78	11.20	43.50	-32.30	QP	
6	105.0873	23.38	-11.75	11.63	43.50	-31.87	QP	

*:Maximum data x:Over limit !:over margin



Site:	843.3	Antenna::Vertical	Temperature(C):26(C)
Limit:	FCC Part 15 B Radiation(QP)		Humidity(%):60%
EUT:	LED Ceiling Light	Test Time:	2021-10-21
M/N.:	PLU01R-0918T-950	Power Rating:	AC 120V/60Hz
Mode:	ON	Test Engineer:	Bast
Note:			

No.	Frequency (MHz)	Reading Level(dBuV)	Factor (dB)	Measurement(dBuV)	Limit (dBuV)	Over (dB)	Detector	Comment
1 *	30.0000	30.91	-14.71	16.20	40.00	-23.80	QP	
2	42.2281	25.27	-12.80	12.47	40.00	-27.53	QP	
3	51.6616	24.39	-11.90	12.49	40.00	-27.51	QP	
4	59.9639	25.16	-13.10	12.06	40.00	-27.94	QP	
5	87.4177	24.33	-13.90	10.43	40.00	-29.57	QP	
6	106.9461	24.28	-11.74	12.54	43.50	-30.96	QP	

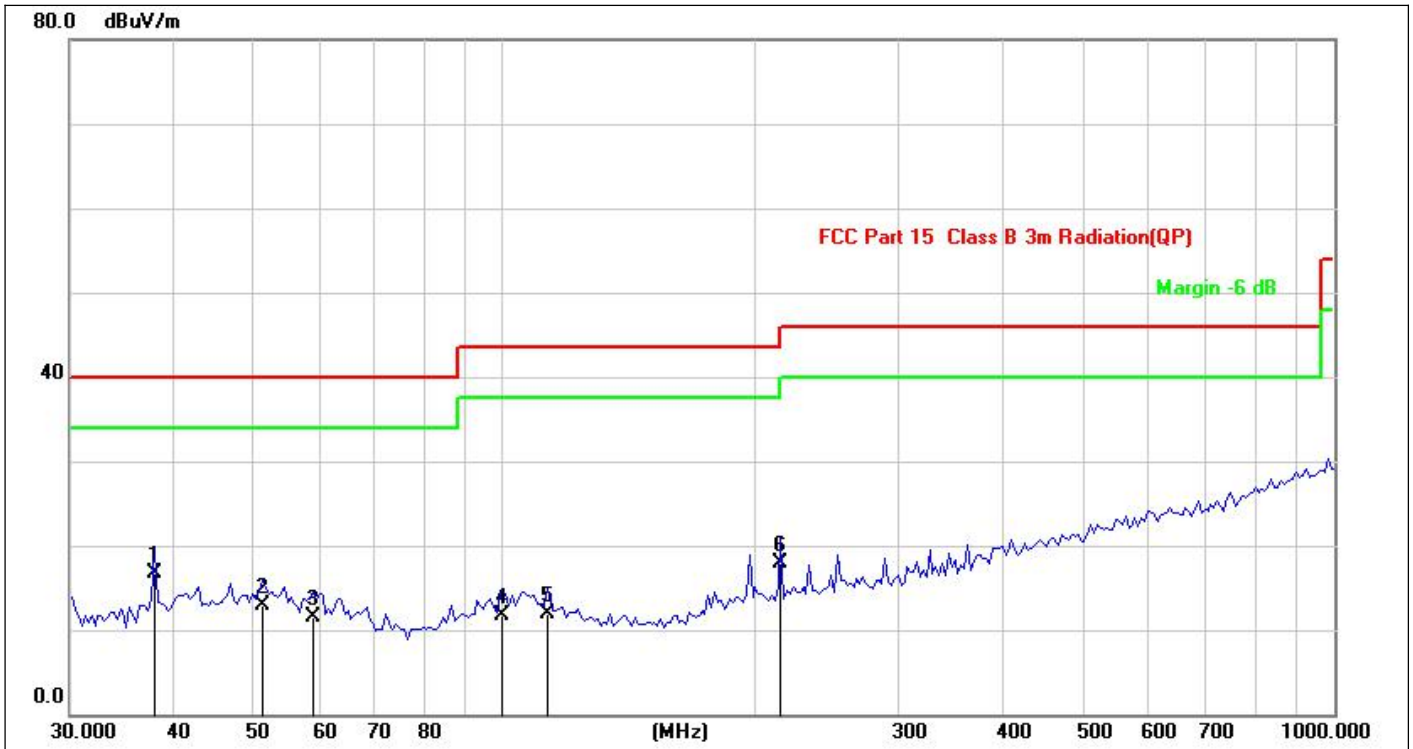
*:Maximum data x:Over limit !:over margin



Site:	843.3	Antenna::Horizontal	Temperature(C):26(C)
Limit:	FCC Part 15 B Radiation(QP)		Humidity(%):60%
EUT:	LED Ceiling Light	Test Time:	2021-10-21
M/N.:	PLU01R-1224T-950	Power Rating:	AC 120V/60Hz
Mode:	ON	Test Engineer:	Bast
Note:			

No.	Frequency (MHz)	Reading Level(dBuV)	Factor (dB)	Measurement(dBuV)	Limit (dBuV)	Over (dB)	Detector	Comment
1	33.0370	25.89	-14.23	11.66	40.00	-28.34	QP	
2	39.3681	24.15	-13.23	10.92	40.00	-29.08	QP	
3	46.0971	23.86	-12.23	11.63	40.00	-28.37	QP	
4 *	52.5753	24.63	-12.02	12.61	40.00	-27.39	QP	
5	62.6507	24.23	-13.61	10.62	40.00	-29.38	QP	
6	107.8877	23.90	-11.74	12.16	43.50	-31.34	QP	

*:Maximum data x:Over limit !:over margin



Site:	843.3	Antenna::Vertical	Temperature(C):26(C)
Limit:	FCC Part 15 B Radiation(QP)		Humidity(%):60%
EUT:	LED Ceiling Light	Test Time:	2021-10-21
M/N.:	PLU01R-1224T-950	Power Rating:	AC 120V/60Hz
Mode:	ON	Test Engineer:	Bast
Note:			

No.	Frequency (MHz)	Reading Level(dBuV)	Factor (dB)	Measurement(dBuV)	Limit (dBuV)	Over (dB)	Detector	Comment
1 *	38.0115	30.22	-13.45	16.77	40.00	-23.23	QP	
2	51.2106	24.70	-11.83	12.87	40.00	-27.13	QP	
3	58.9217	24.44	-12.96	11.48	40.00	-28.52	QP	
4	99.7028	23.44	-11.80	11.64	43.50	-31.86	QP	
5	112.7218	24.06	-12.22	11.84	43.50	-31.66	QP	
6	215.6456	28.62	-10.71	17.91	43.50	-25.59	QP	

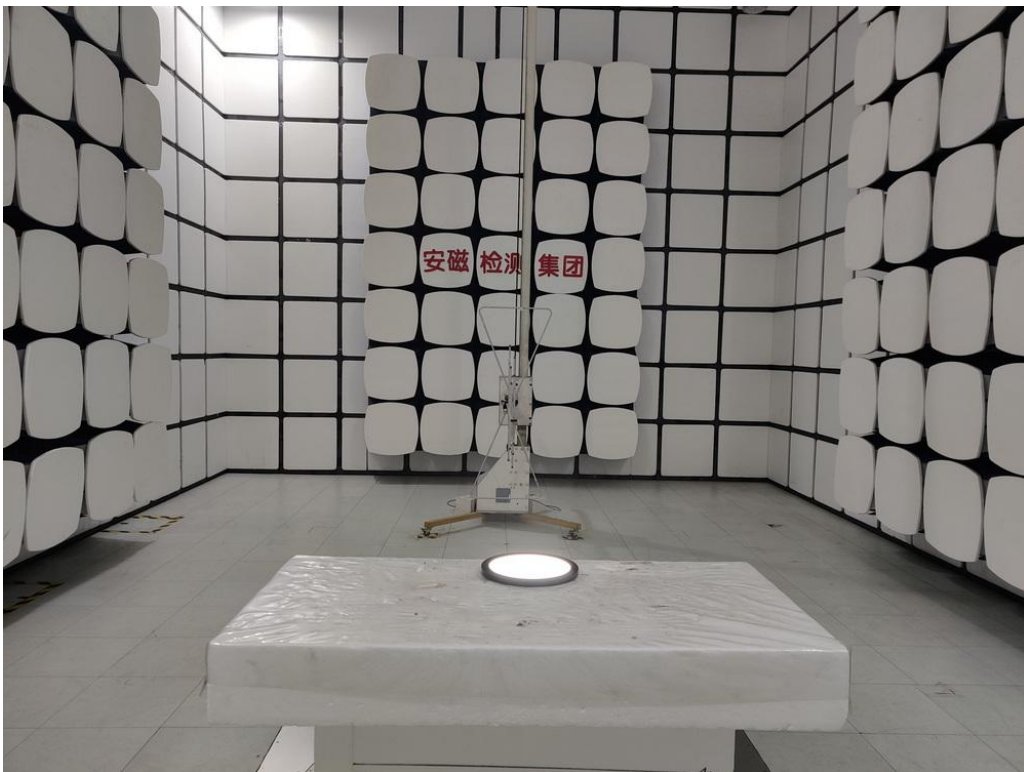
*:Maximum data x:Over limit !:over margin

6. PHOTOGRAPHS

6.1. Photos of Conducted Emission Measurement

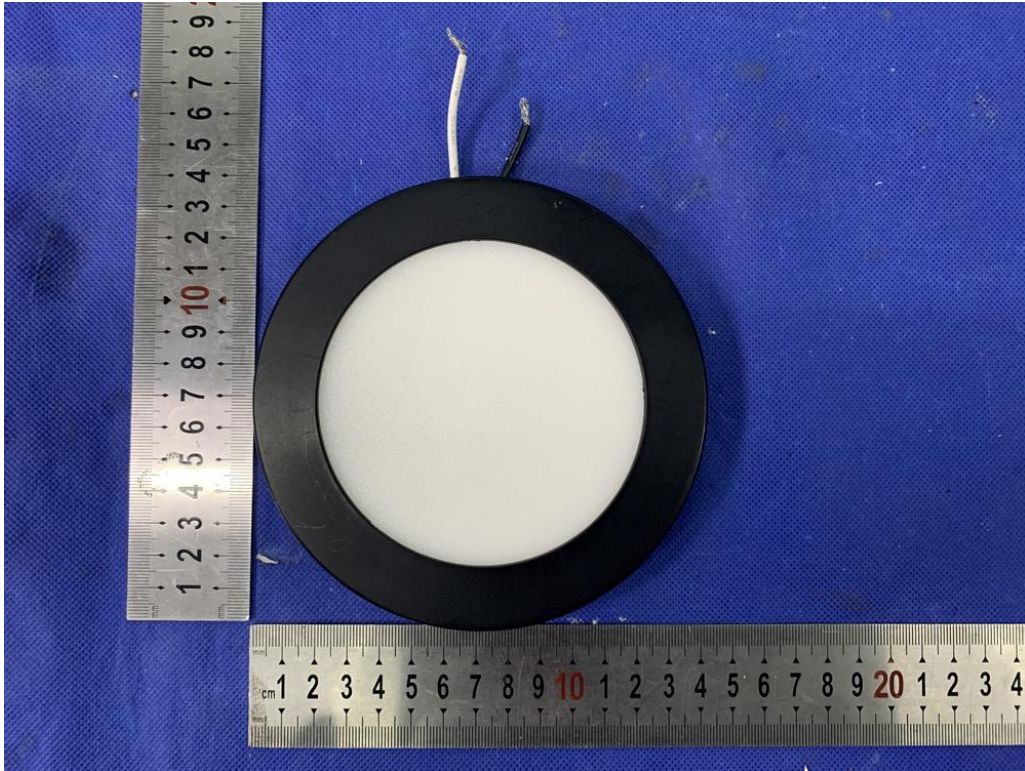


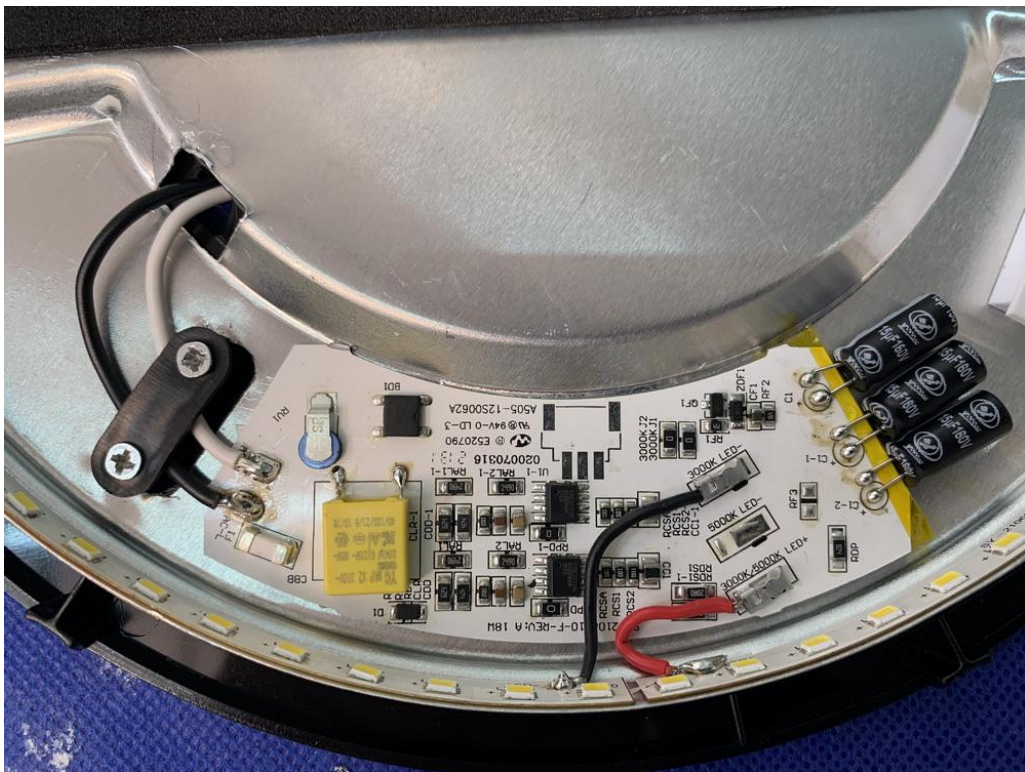
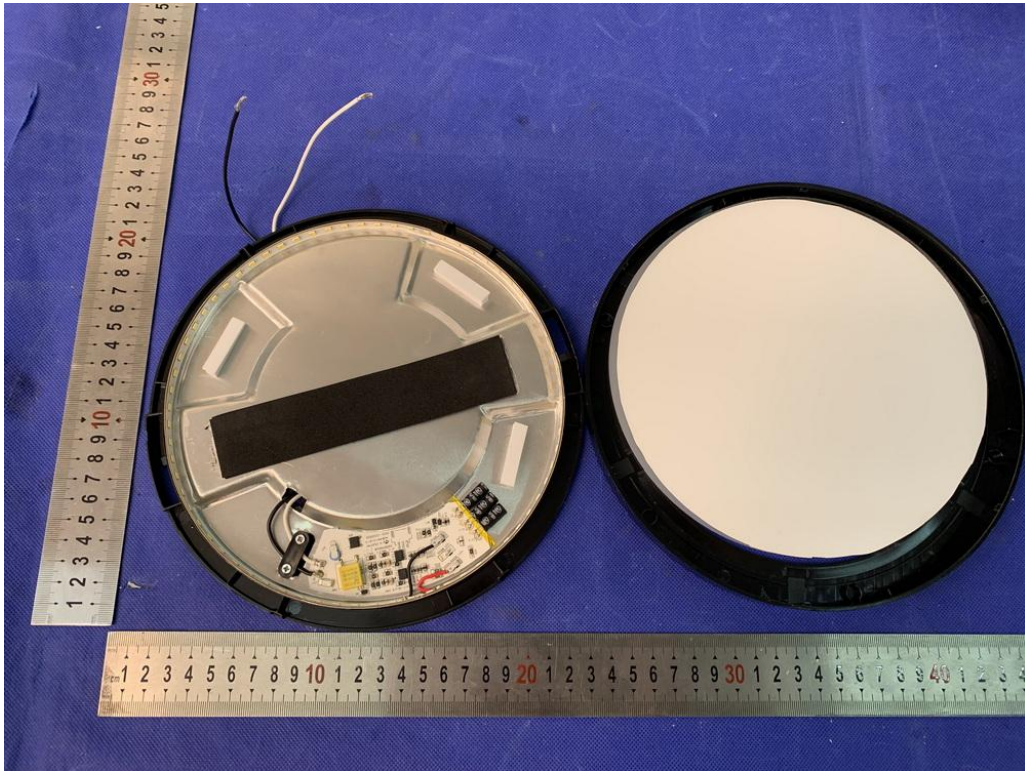
6.2. Photos of Radiation Emission Measurement

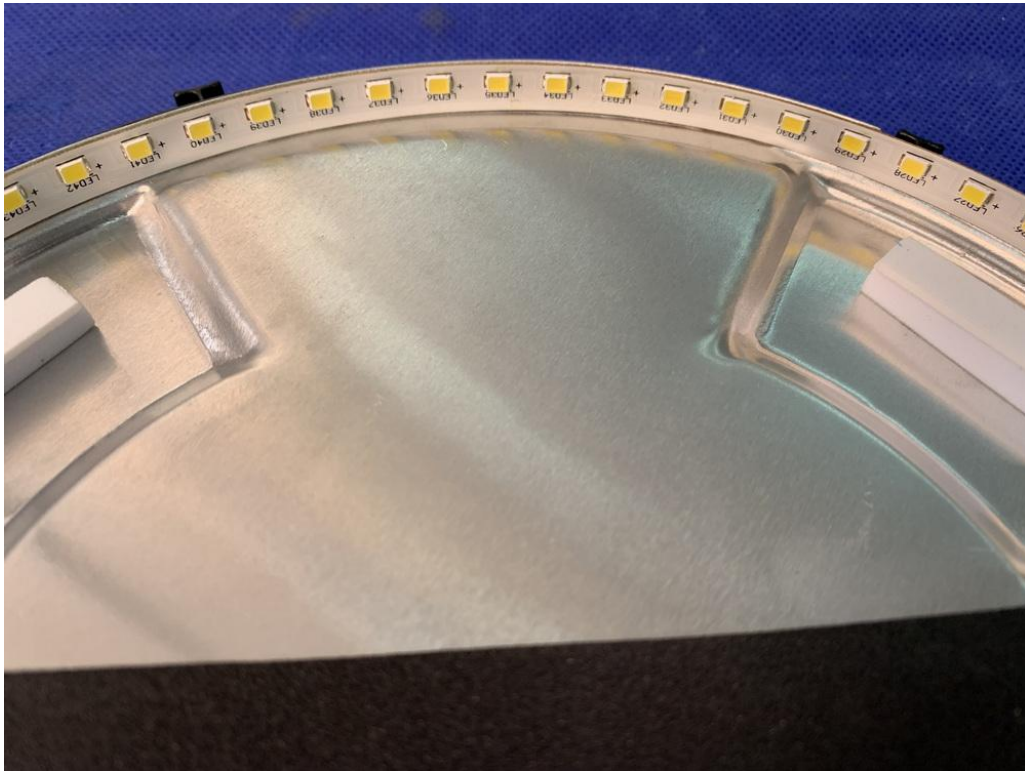


APPENDIX A: Photos of EUT

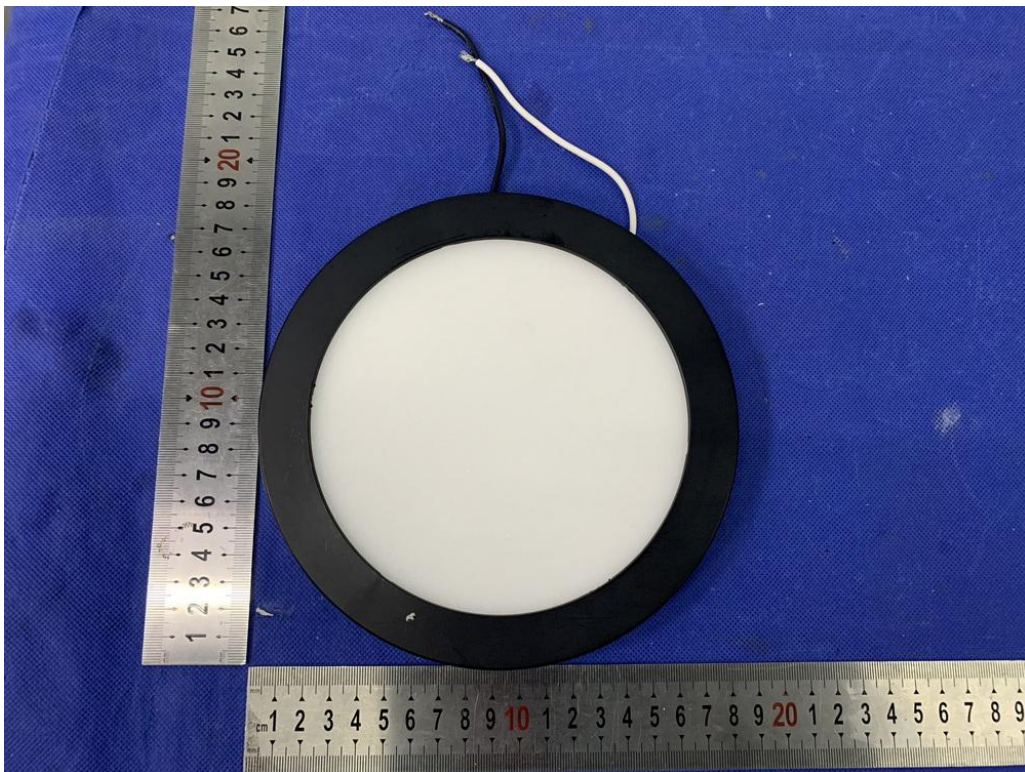
Model : PLU01R-0509T-950

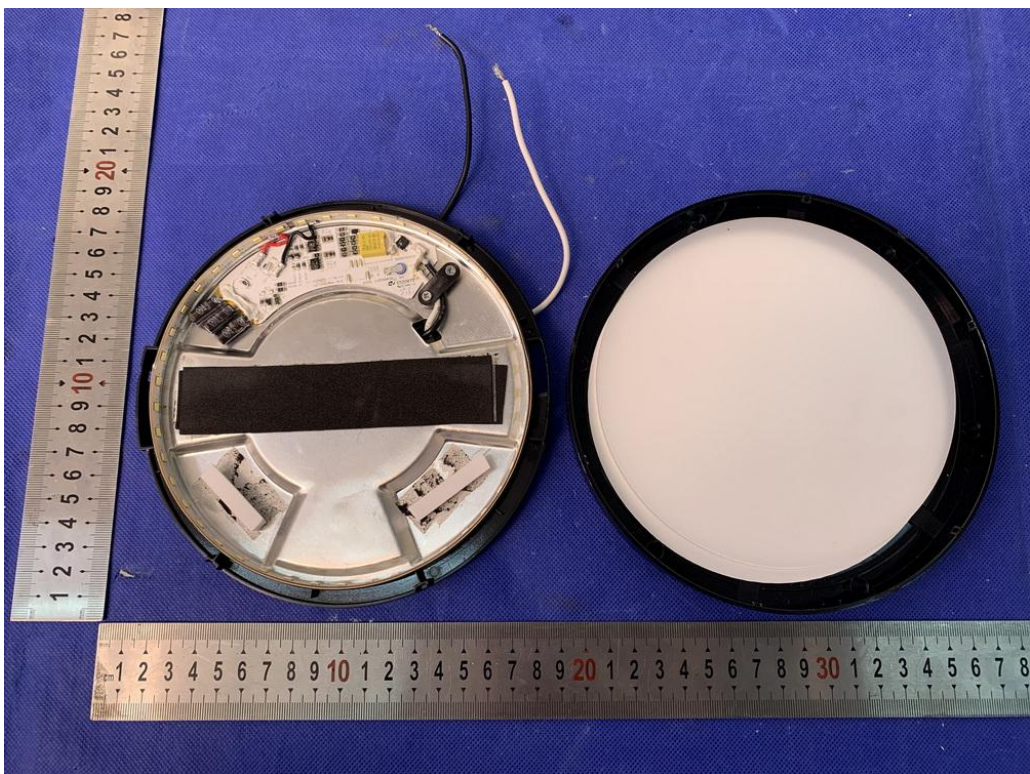
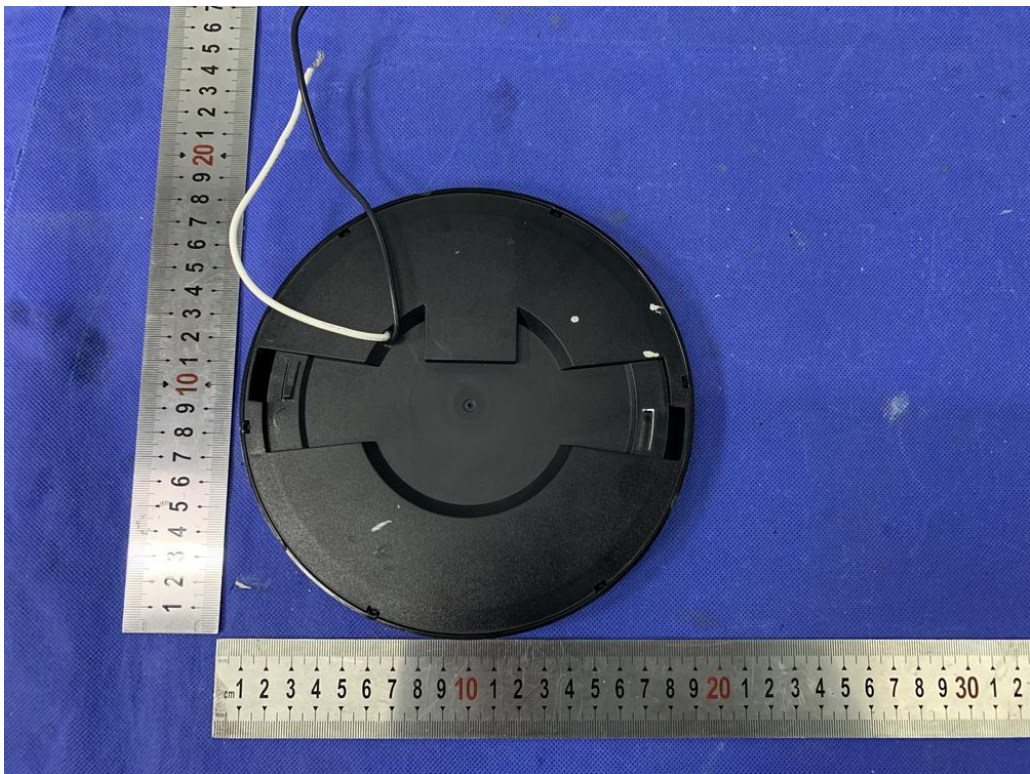


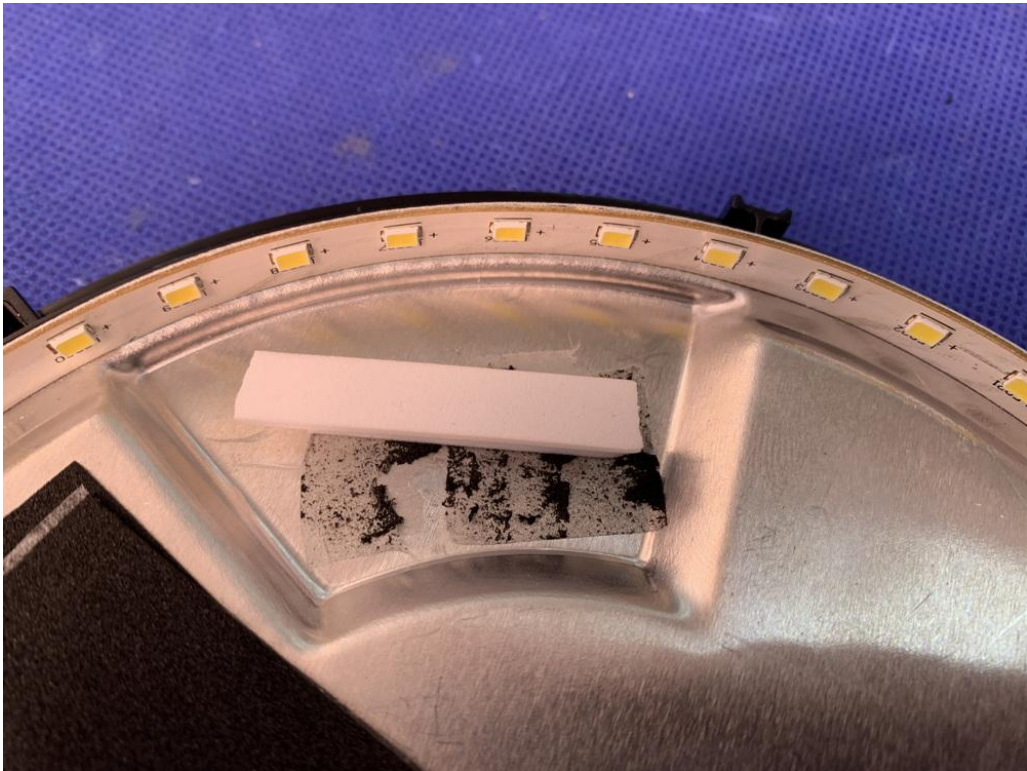
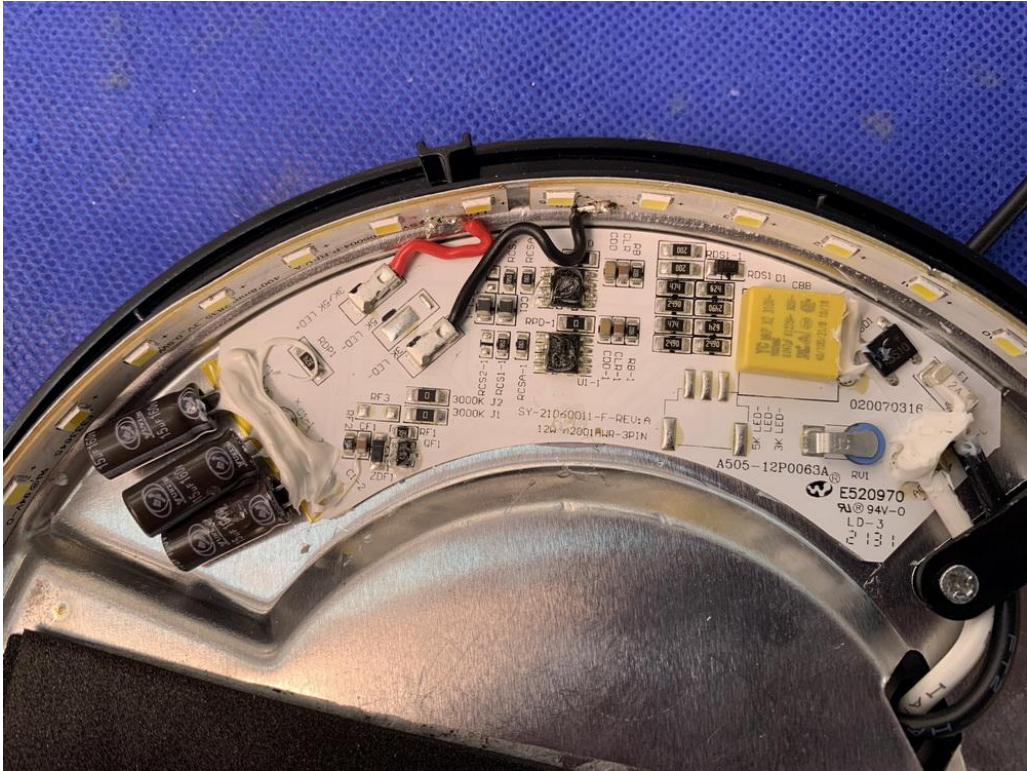




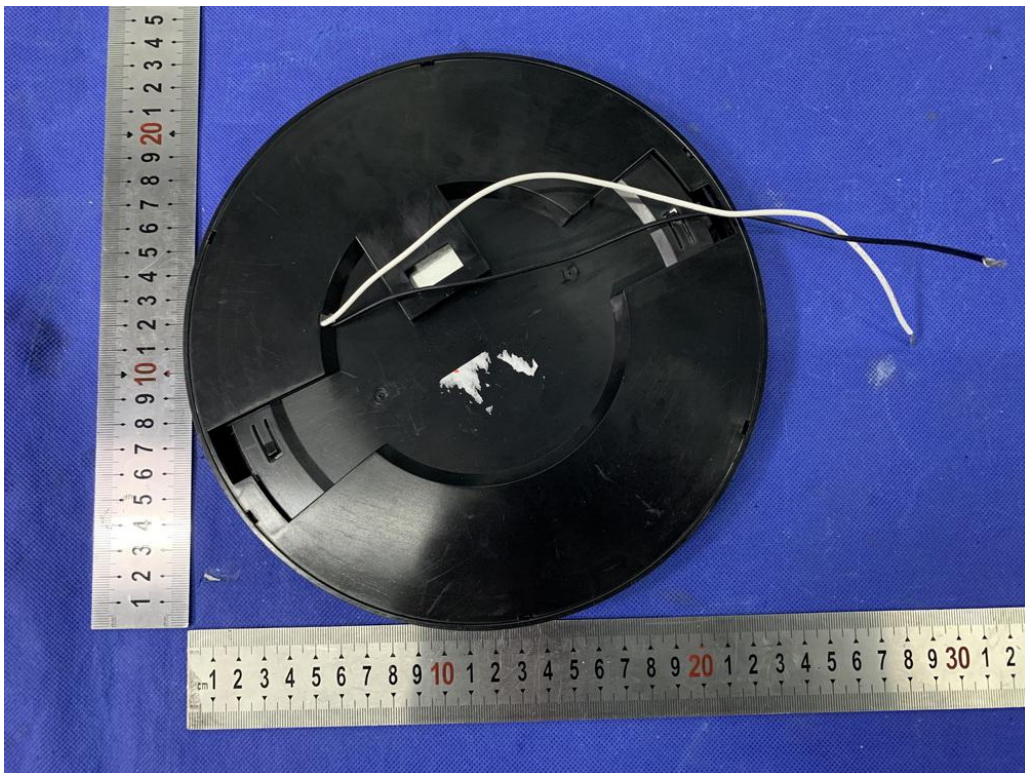
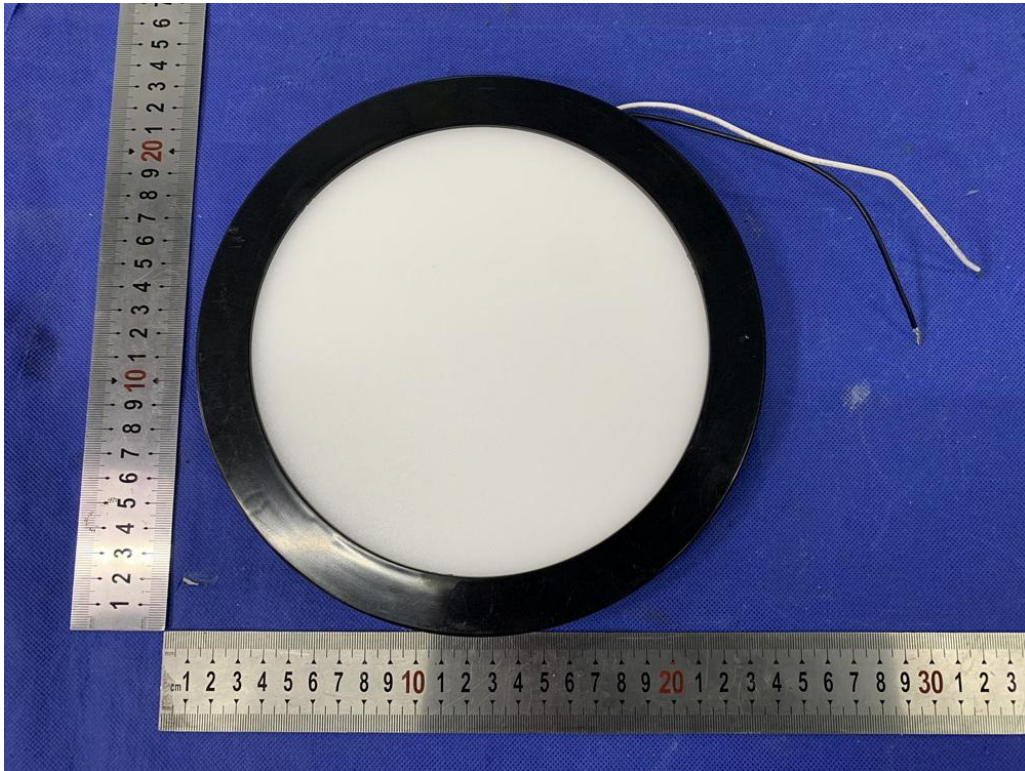
Model : PLU01R-0712T-950

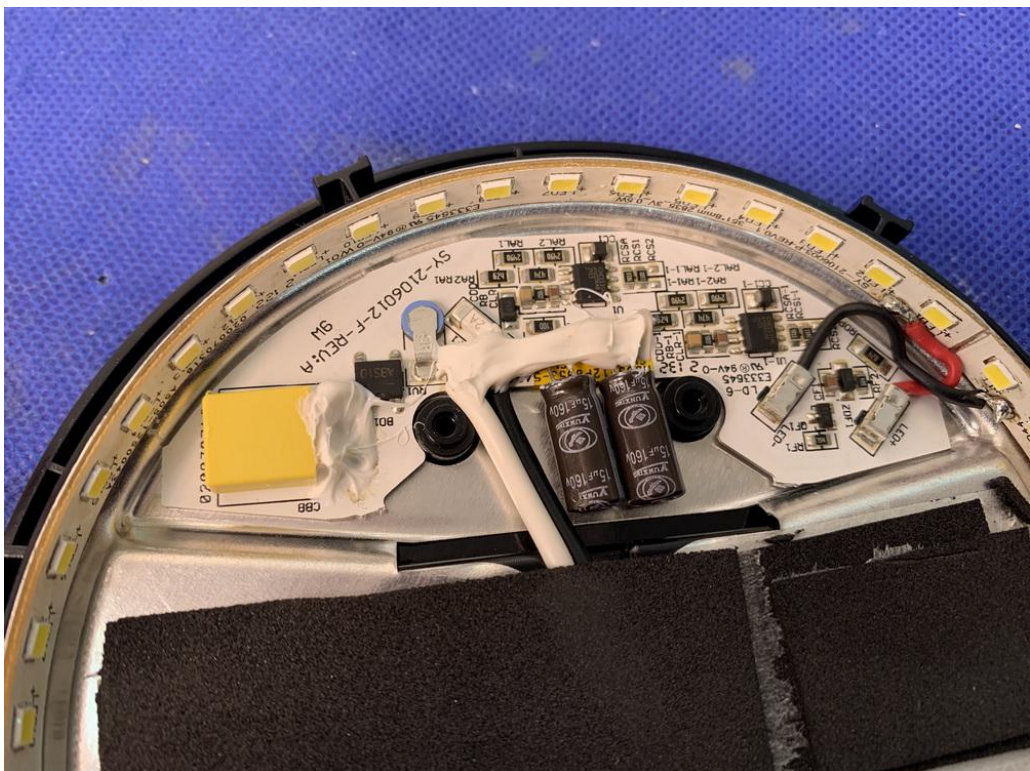
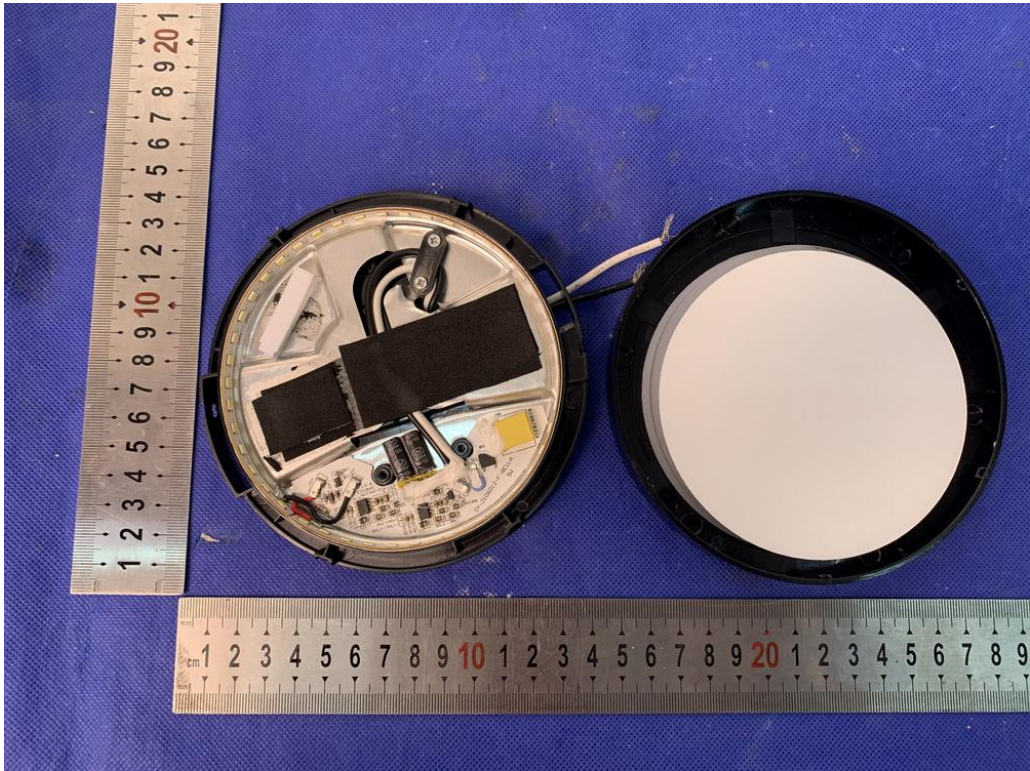


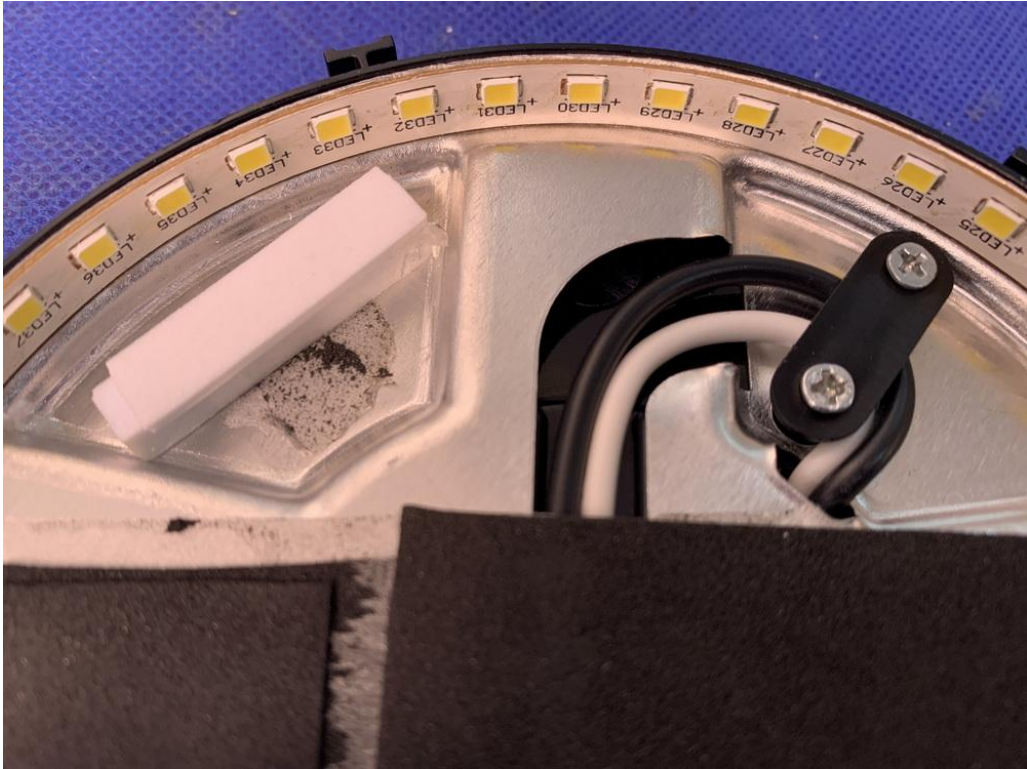




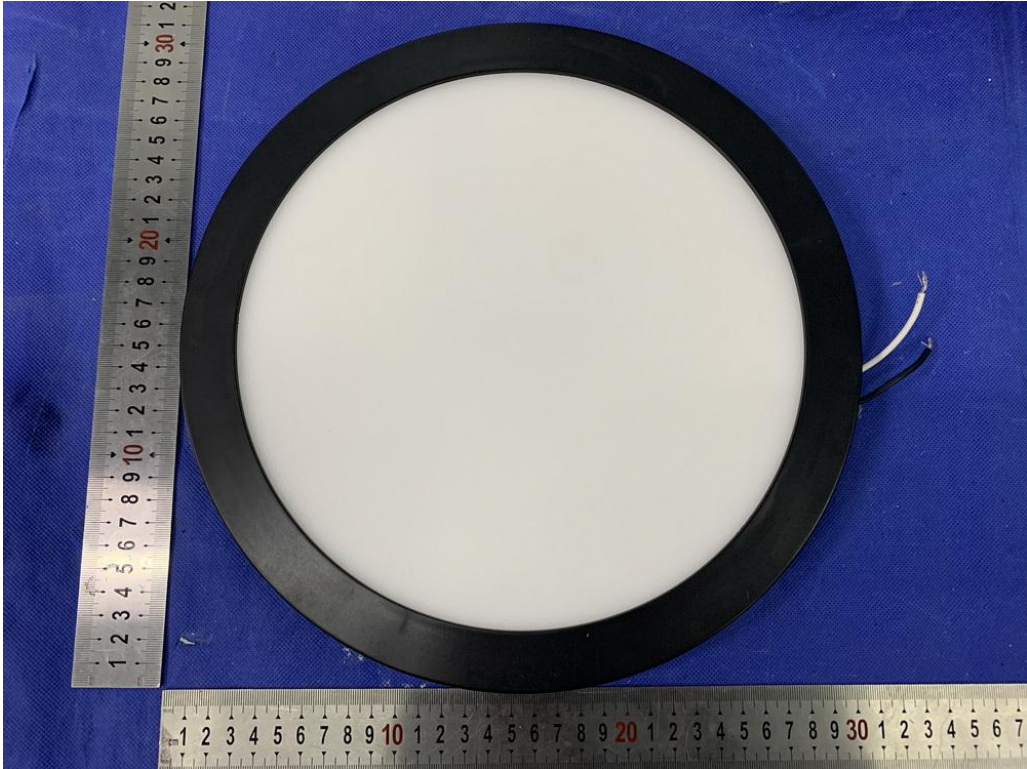
Model : PLU01R-0918T-950

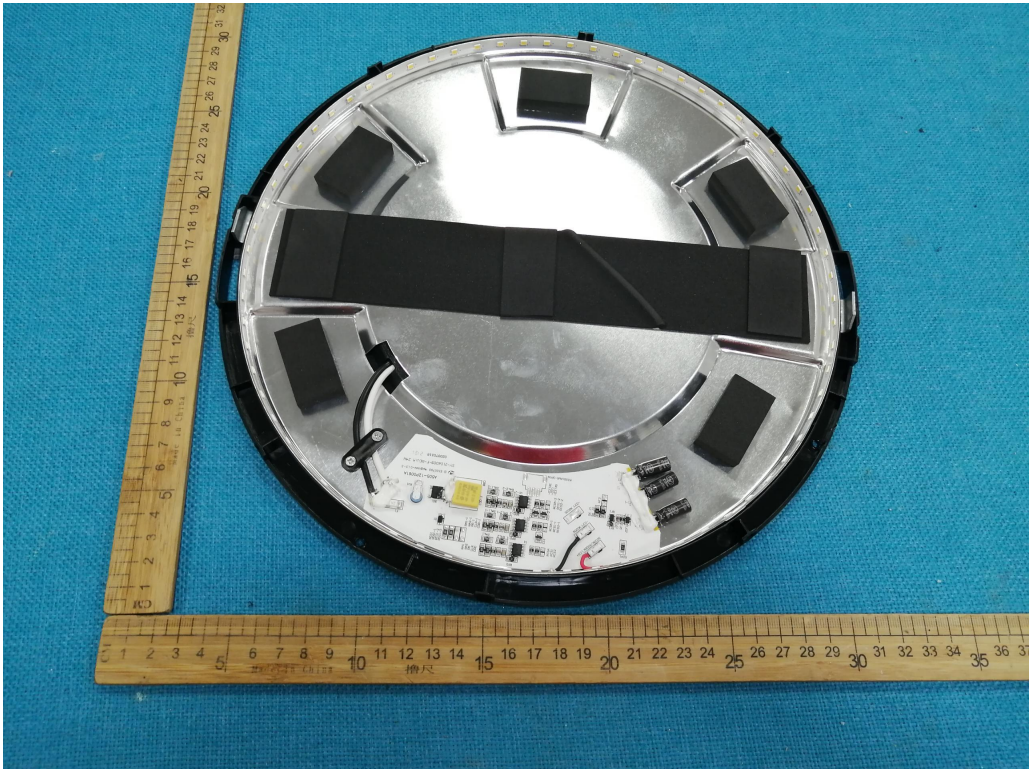
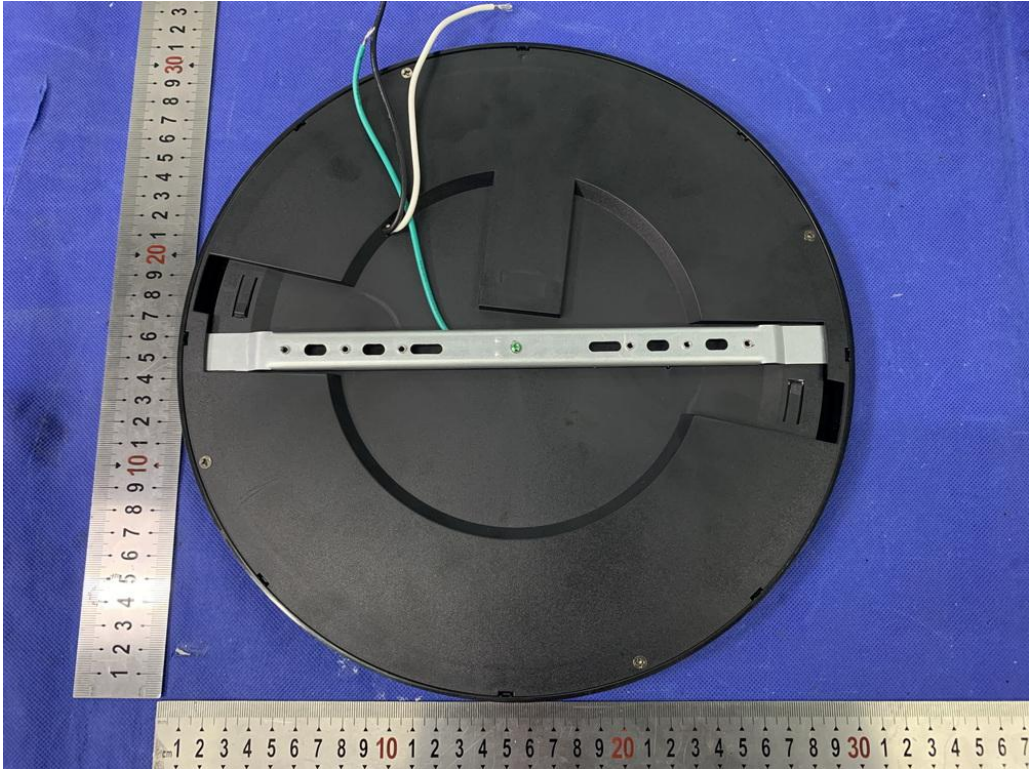


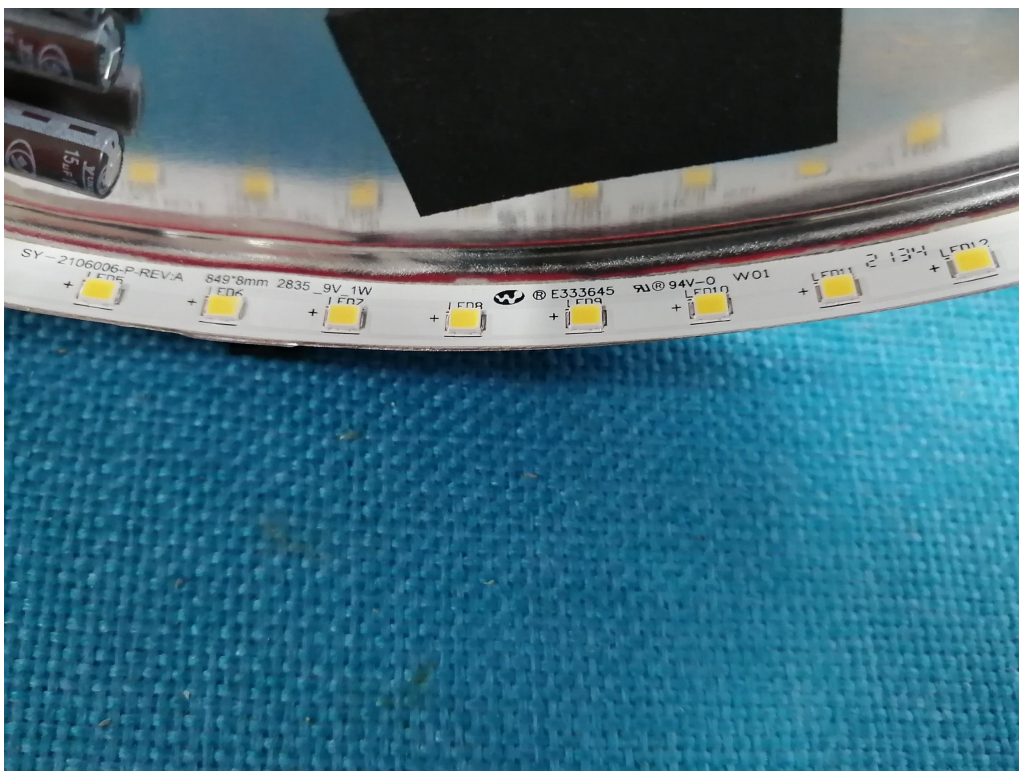
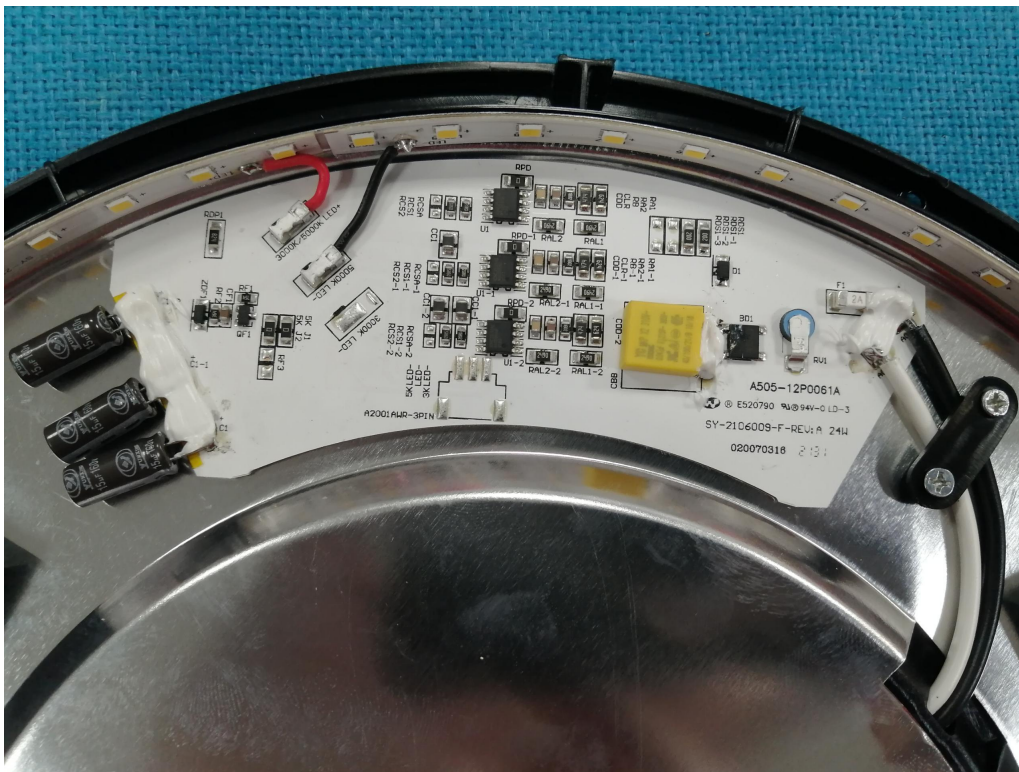




Model : PLU01R-1224T-950







-----The end-----