

FCC Part 15, Subpart B, Class B

ARTIKA FOR LIVING INC

Swirl LED Pendant Fixture

Test Model: PDT-SWR

Additional Model No.: PDT-SWR-XXXXXX

("XXXXXX" can be A to Z and/or 0 to 9 and/or blank (commercial code))

Prepared for : ARTIKA FOR LIVING INC
Address : 1756 50th avenue, Lachine, Québec, Canada H8T 2V5

Prepared by : Shenzhen LCS Compliance Testing Laboratory Ltd.
Address : Room 101, 201, Building A and Room 301, Building C,
Juji Industrial Park, Yabianxueziwei, Shajing Street,
Bao'an District, Shenzhen, Guangdong, China

Tel : (+86)755-82591330
Fax : (+86)755-82591332
Web : www.LCS-cert.com
Mail : webmaster@LCS-cert.com

Date of receipt of test sample : November 16, 2020
Number of tested samples : 1
Sample No. : 201102346A-1
Serial number : Prototype
Date of Test : November 16, 2020 ~ November 20, 2020
Date of Report : November 25, 2020



**FCC Part 15, Subpart B, Class B
FCC 47 CFR Part 15 Subpart B, Class B, ANSI C63.4 -2014**

Report Reference No. : LCS201102346AE

Date Of Issue : November 25, 2020

Testing Laboratory Name : Shenzhen LCS Compliance Testing Laboratory Ltd.

Address : Room 101, 201, Building A and Room 301, Building C, Juji Industrial Park, Yabianxueziwei, Shajing Street, Bao'an District, Shenzhen, Guangdong, China

Testing Location/ Procedure... : Full application of Harmonised standards
Partial application of Harmonised standards
Other standard testing method

Applicant's Name..... : ARTIKA FOR LIVING INC

Address : 1756 50th avenue, Lachine, Québec, Canada H8T 2V5

Test Specification

Standard..... : FCC 47 CFR Part 15 Subpart B, Class B, ANSI C63.4 -2014

Test Report Form No..... : LCSEMC-1.0

TRF Originator..... : Shenzhen LCS Compliance Testing Laboratory Ltd.

Master TRF..... : Dated 2011-03

SHENZHEN LCS COMPLIANCE TESTING LABORATORY LTD. All rights reserved.

This publication may be reproduced in whole or in part for non-commercial purposes as long as the SHENZHEN LCS COMPLIANCE TESTING LABORATORY LTD. is acknowledged as copyright owner and source of the material. SHENZHEN LCS COMPLIANCE TESTING LABORATORY LTD. takes no responsibility for and will not assume liability for damages resulting from the reader's interpretation of the reproduced material due to its placement and context.

Test Item Description..... : Swirl LED Pendant Fixture

Test Model : PDT-SWR

Trade Mark : Artika

Ratings : Input: AC 100-135V, 50-60Hz, 0.6A Max
Output: DC 33-48V, 28.8W Max

Result : Positive

Compiled by:

Vera Deng

Supervised by:

Jin Wang

Approved by:

Gavin Liang

Vera Deng/ File administrators

Jin Wang/ Technique principal

Gavin Liang/ Manager

FCC -- TEST REPORT**Test Report No. : LCS201102346AE**November 25, 2020

Date of issue

Test Model : PDT-SWR

EUT..... : Swirl LED Pendant Fixture

Applicant..... : ARTIKA FOR LIVING INC

Address..... : 1756 50th avenue, Lachine, Québec, Canada H8T 2V5

Telephone..... : /

Fax..... : /

Manufacturer..... : ZHONGSHAN C5 LIGHTING CO. LTDAddress..... : 1# Henglong Road, Tongyi Industrial Area, Cao San,
Guzhen, Zhongshan, Guangdong, China.

Telephone..... : /

Fax..... : /

Factory..... : ZHONGSHAN C5 LIGHTING CO. LTDAddress..... : 1# Henglong Road, Tongyi Industrial Area, Cao San,
Guzhen, Zhongshan, Guangdong, China.

Telephone..... : /

Fax..... : /

Test Result according to the standards on page 6: **Positive**

The test report merely corresponds to the test sample.

It is not permitted to copy extracts of these test result without the written permission of the test laboratory.

Revision History

Revision	Issue Date	Revisions	Revised By
000	November 25, 2020	Initial Issue	Gavin Liang

TABLE OF CONTENTS

Test Report Description	Page
1. SUMMARY OF STANDARDS AND RESULTS	6
1.1. Description of Standards and Results	6
2. GENERAL INFORMATION	7
2.1. Description of Device (EUT)	7
2.2. Support Equipment List.....	7
2.3. Description of Test Facility	7
2.4. Statement of the Measurement Uncertainty	8
2.5. Measurement Uncertainty.....	8
3. TEST RESULTS	9
3.1. POWER LINE CONDUCTED EMISSION MEASUREMENT	9
3.2. Radiated emission Measurement	13
4. PHOTOGRAPH	17
5. EXTERNAL AND INTERNAL PHOTOS OF THE EUT.....	18

1. SUMMARY OF STANDARDS AND RESULTS

1.1. Description of Standards and Results

The EUT have been tested according to the applicable standards as referenced below.

EMISSION			
Description of Test Item	Standard	Limits	Results
Conducted disturbance at mains terminals	FCC 47 CFR Part 15 Subpart B, Class B, ANSI C63.4 -2014	Class B	PASS
Radiated disturbance	FCC 47 CFR Part 15 Subpart B, Class B, ANSI C63.4 -2014	Class B	PASS
N/A is an abbreviation for Not Applicable.			

Test mode:

Mode	Working	Record
------	---------	--------

***Note: All test modes were tested, but we only recorded the worst case in this report.

2. GENERAL INFORMATION

2.1. Description of Device (EUT)

EUT	: Swirl LED Pendant Fixture
Trade Mark	: Artika
Test Model	: PDT-SWR
Additional Model	: PDT-SWR-XXXXXX("XXXXXX" can be A to Z and/or 0 to 9 and/or blank (commercial code))
Model Declaration	: PCB board, structure and internal of these model(s) are the same, So no additional models were tested
Power Supply	: Input: AC 100-135V, 50-60Hz, 0.6A Max Output: DC 33-48V, 28.8W Max

Highest internal frequency (Fx)	Highest measured frequency
Fx ≤ 108 MHz	1 GHz
108 MHz < Fx ≤ 500 MHz	2 GHz
500 MHz < Fx ≤ 1 GHz	5 GHz
Fx > 1 GHz	5 × Fx up to a maximum of 6 GHz

NOTE 1 For FM and TV broadcast receivers, Fx is determined from the highest frequency generated or used excluding the local oscillator and tuned frequencies.
Where Fx is unknown, the radiated emission measurements shall be performed up to 6 GHz.

2.2. Support Equipment List

Name	Manufacturers	M/N	S/N
--	--	--	--

2.3. Description of Test Facility

Site Description	
EMC Lab.	: NVLAP Accreditation Code is 600167-0. FCC Designation Number is CN5024. CAB identifier is CN0071. CNAS Registration Number is L4595.

2.4. Statement of the Measurement Uncertainty

The data and results referenced in this document are true and accurate. The reader is cautioned that there may be errors within the calibration limits of the equipment and facilities. The measurement uncertainty was calculated for all measurements listed in this test report acc. To CISPR 16 – 4 “Specification for radio disturbance and immunity measuring apparatus and methods – Part 4: Uncertainty in EMC Measurements” and is documented in the LCS quality system acc. To DIN EN ISO/IEC 17025. Furthermore, component and process variability of devices similar to that tested may result in additional deviation. The manufacturer has the sole responsibility of continued compliance of the device.

2.5. Measurement Uncertainty

Test	Parameters	Expanded Uncertainty (Ulab)	Expanded Uncertainty (Ucisp)
Conducted Emission	Level accuracy (9kHz to 150kHz) (150kHz to 30MHz)	± 2.63 dB ± 2.35 dB	± 3.8 dB ± 3.4 dB
Radiated Emission	Level accuracy (30MHz to 1000MHz)	± 3.48 dB	± 5.3 dB
Radiated Emission	Level accuracy (above 1000MHz)	± 3.90 dB	± 5.2 dB

(1) Where relevant, the following measurement uncertainty levels have been estimated for tests performed on the apparatus.

(2) The reported expanded uncertainty of measurement is stated as the standard uncertainty of measurement multiplied by the coverage factor of $k=2$, which for a normal distribution corresponds to a coverage probability of approximately 95%.

2.6. Test Sample

The application provides 1 samples to meet requirement;

Sample Number	Description
Sample 2(201102346A-1)	Normal sample – Intermittent transmit

3. TEST RESULTS

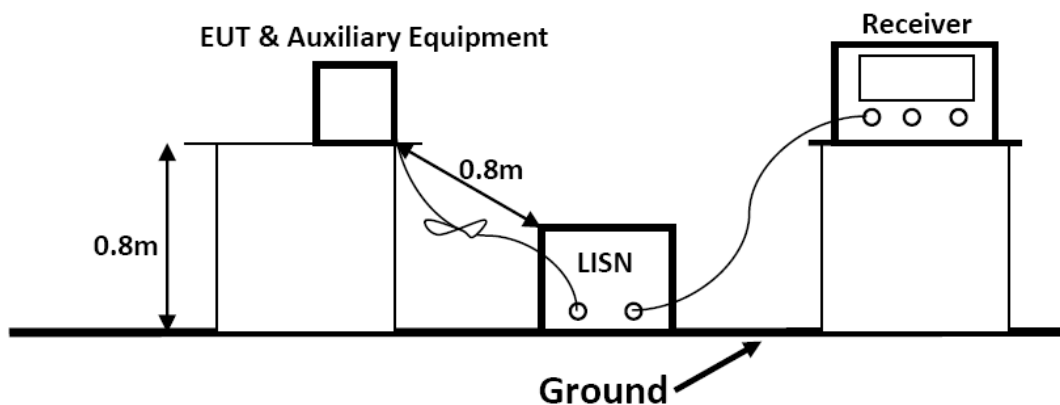
3.1. POWER LINE CONDUCTED EMISSION MEASUREMENT

3.1.1. Test Equipment

The following test equipments are used during the power line conducted measurement:

Item	Equipment	Manufacturer	Model No.	Serial No.	Cal Date	Due Date
1	EMI Test Software	EZ	EZ-EMC	/	N/A	N/A
2	EMI Test Receiver	R&S	ESPI	101840	2020-06-22	2021-06-21
3	Artificial Mains	R&S	ENV216	101288	2020-06-22	2021-06-21
4	10dB Attenuator	SCHWARZB ECK	MTS-IMP-136	261115-001-0 032	2020-06-22	2021-06-21
5	Impedance Stabilization Network	TESEQ	ISN T800	45130	2020-10-20	2021-10-19

3.1.2. Block Diagram of Test Setup



3.1.3. Test Standard

Power Line Conducted Emission Limits (Class B)

Frequency (MHz)			Limit (dB μ V)	
			Quasi-peak Level	Average Level
0.15	~	0.50	66.0 ~ 56.0 *	56.0 ~ 46.0 *
0.50	~	5.00	56.0	46.0
5.00	~	30.00	60.0	50.0

NOTE1-The lower limit shall apply at the transition frequencies.

NOTE2-The limit decreases linearly with the logarithm of the frequency in the range 0.15MHz to 0.50MHz.

3.1.4. EUT Configuration on Test

The following equipments are installed on Power Line Conducted Emission Measurement to meet the commission requirement and operating regulations in a manner, which tends to maximize its emission characteristics in a normal application.

3.1.5. Operating Condition of EUT

3.1.5.1. Setup the EUT as shown on Section 3.1.2

3.1.5.2. Turn on the power of all equipments.

3.1.5.3. Let the EUT work in measuring Working and measure it.

3.1.6. Test Procedure

The EUT system is connected to the power mains through a line impedance stabilization network (L.I.S.N.). This provides 50ohm coupling impedance for the EUT system. Please refer the block diagram of the test setup and photographs. Both sides of AC line are checked to find out the maximum conducted emission. In order to find the maximum emission levels, the relative positions of equipment and all of the interface cables shall be changed according to FCC/ANSI C63.4-2014 on Conducted Emission Measurement.

The bandwidth of the test receiver is set at 9kHz.

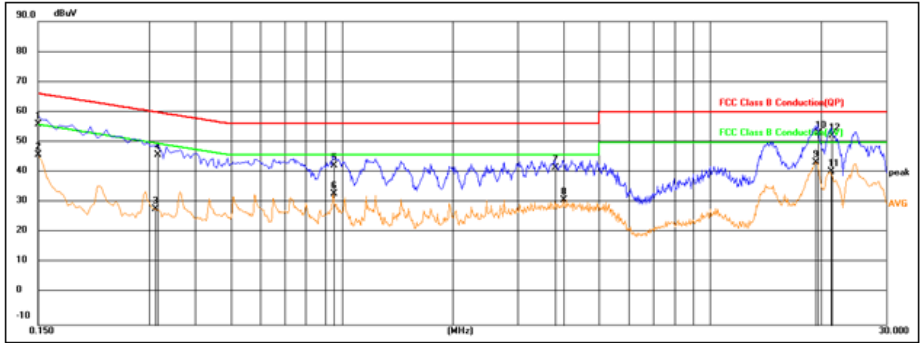
The frequency range from 150kHz to 30MHz is investigated

3.1.7. Test Results

PASS.

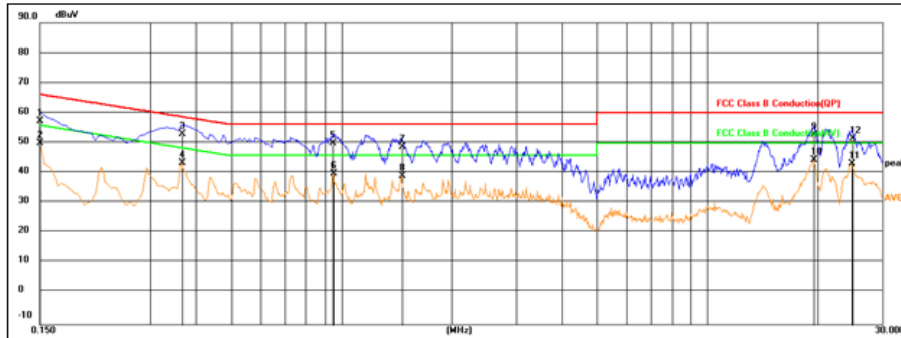
The test result please refer to the next page.

Test Model	PDT-SWR	Test Mode	Working
Environmental Conditions	23.3°C, 53.7% RH	Test Engineer	Ben Jin
Pol	Line	Test Voltage	AC 120V/60Hz



No.	Frequency (MHz)	Reading (dBuV)	Correct (dB)	Result (dBuV)	Limit (dBuV)	Margin (dB)	Remark
1	0.1500	36.88	19.14	56.02	66.00	-9.98	QP
2	0.1500	26.91	19.14	46.05	56.00	-9.95	AVG
3	0.3120	8.97	19.28	28.25	49.92	-21.67	AVG
4	0.3166	26.72	19.28	46.00	59.80	-13.80	QP
5	0.9509	23.19	19.29	42.48	56.00	-13.52	QP
6	0.9509	13.82	19.29	33.11	46.00	-12.89	AVG
7	3.7860	22.18	19.47	41.65	56.00	-14.35	QP
8	4.0020	11.66	19.47	31.13	46.00	-14.87	AVG
9	19.3110	23.30	20.31	43.61	50.00	-6.39	AVG
10	19.5765	32.70	20.31	53.01	60.00	-6.99	QP
11	21.1740	20.25	20.29	40.54	50.00	-9.46	AVG
12	21.3134	31.94	20.29	52.23	60.00	-7.77	QP

Test Model	PDT-SWR	Test Mode	Working
Environmental Conditions	23.3°C, 53.7% RH	Test Engineer	Ben Jin
Pol	Neutral	Test Voltage	AC 120V/60Hz



No.	Frequency (MHz)	Reading (dBuV)	Correct (dB)	Result (dBuV)	Limit (dBuV)	Margin (dB)	Remark
1	0.1500	38.25	19.14	57.39	66.00	-8.61	QP
2	0.1500	30.89	19.14	50.03	56.00	-5.97	AVG
3	0.3659	33.90	19.31	53.21	58.59	-5.38	QP
4	0.3659	24.20	19.31	43.51	48.59	-5.08	AVG
5	0.9464	30.90	19.29	50.19	56.00	-5.81	QP
6	0.9508	20.77	19.29	40.06	46.00	-5.94	AVG
7	1.4594	29.57	19.33	48.90	56.00	-7.10	QP
8	1.4594	19.93	19.33	39.26	46.00	-6.74	AVG
9	19.4819	32.62	20.30	52.92	60.00	-7.08	QP
10	19.4819	24.31	20.30	44.61	50.00	-5.39	AVG
11	24.7154	23.12	20.23	43.35	50.00	-6.65	AVG
12	24.8144	31.27	20.23	51.50	60.00	-8.50	QP

Note: Pre-Scan all mode, Thus record worse case mode result in this report.

Result=Reading + Correct

Margin=Measured Level- Limit

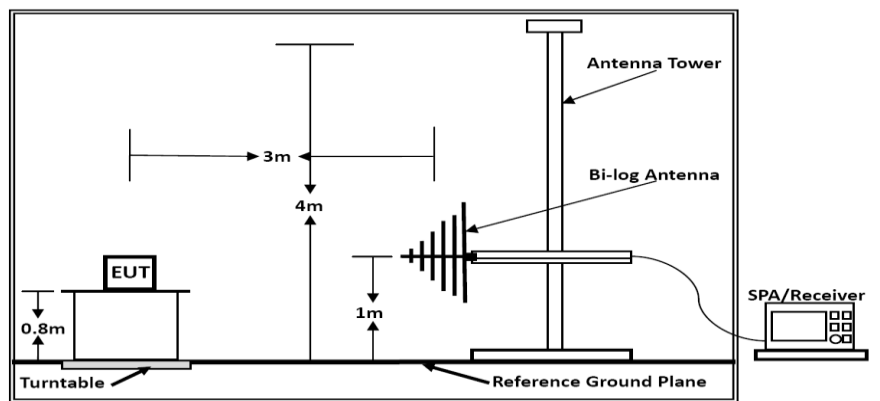
3.2. Radiated emission Measurement

3.2.1. Test Equipment

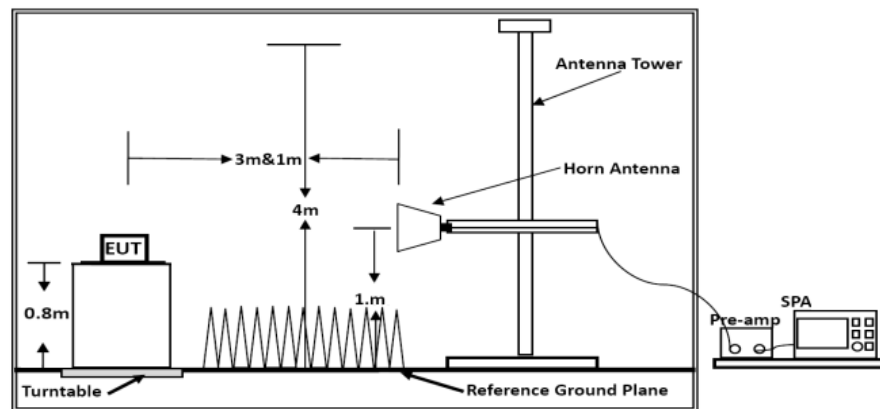
The following test equipments are used during the radiated emission measurement:

Item	Equipment	Manufacturer	Model No.	Serial No.	Cal Date	Due Date
1	EMI Test Software	EZ	EZ-EMC	/	N/A	N/A
2	By-log Antenna	SCHWARZBECK	VULB9163	9163-470	2018-07-26	2021-07-25
3	Horn Antenna	SCHWARZBECK	BBHA 9120D	9120D-1925	2018-07-02	2021-07-01
4	EMI Test Receiver	R&S	ESR 7	101181	2020-06-22	2021-06-21
5	Broadband Preamplifier	/	BP-01M18G	P190501	2020-06-22	2021-06-21

3.2.2. Block Diagram of Test Setup



Below 1GHz



Above 1GHz

3.2.3. Radiated Emission Limit (Class B)

Limits for Radiated Disturbance Below 1GHz

FREQUENCY MHz	DISTANCE Meters	FIELD STRENGTHS LIMIT	
		$\mu\text{V}/\text{m}$	$\text{dB}(\mu\text{V})/\text{m}$
30 ~ 88	3	100	40
88 ~ 216	3	150	43.5
216 ~ 960	3	200	46
960 ~ 1000	3	500	54
Remark: (1) Emission level $(\text{dB})\mu\text{V} = 20 \log$ Emission level $\mu\text{V}/\text{m}$ (2) The smaller limit shall apply at the cross point between two frequency bands. (3) Distance is the distance in meters between the measuring instrument, antenna and the closest point of any part of the device or system.			
Limits for Radiated Emission Above 1GHz			
Frequency (MHz)	Distance (Meters)	Peak Limit ($\text{dB}\mu\text{V}/\text{m}$)	Average Limit ($\text{dB}\mu\text{V}/\text{m}$)
Above 1000	3	74	54
***Note: The lower limit applies at the transition frequency.			

3.2.4. EUT Configuration on Measurement

The following equipment are installed on Radiated Emission Measurement to meet the commission requirements and operating regulations in a manner which tends to maximize its emission characteristics in normal application.

3.2.5. Operating Condition of EUT

3.2.5.1. Setup the EUT as shown in Section 3.2.2.

3.2.5.2. Let the EUT work in test Working and measure it.

3.2.6. Test Procedure

EUT and its simulators are placed on a turntable, which is 0.8 meter high above ground. The turntable can rotate 360 degrees to determine the position of the maximum emission level. EUT is set 3.0 meters away from the receiving antenna, which is mounted on an antenna tower. The antenna can be moved up and down between 1.0 meter and 4 meters to find out the maximum emission level. Broadband antenna (calibrated by-log antenna) is used as receiving antenna. Both horizontal and vertical polarization of the antenna is set on measurement. In order to find the maximum emission levels, all of the interface cables must be manipulated according to ANSI C63.4-2014 on radiated emission measurement.

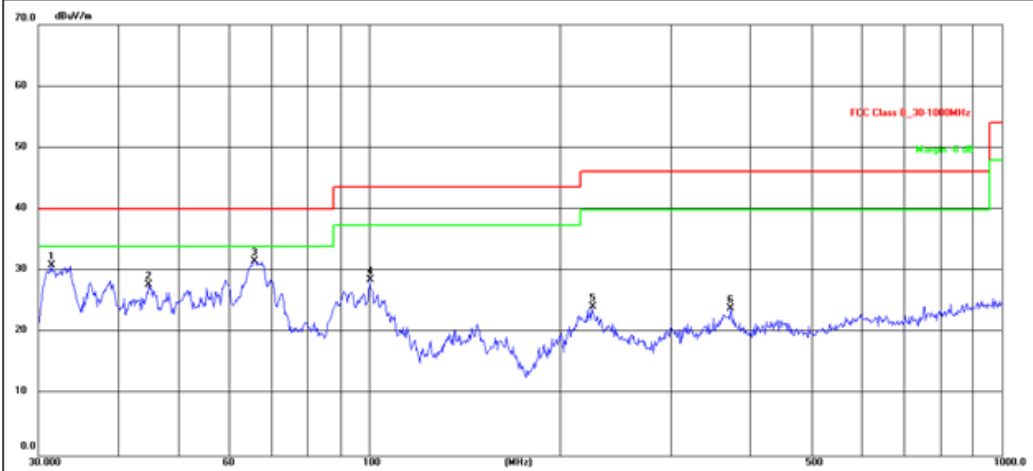
The bandwidth of the EMI test receiver is set at 120kHz, 300kHz.
The frequency range from 30MHz to 1000MHz is checked.

3.2.7. Radiated Emission Noise Measurement Result

PASS.

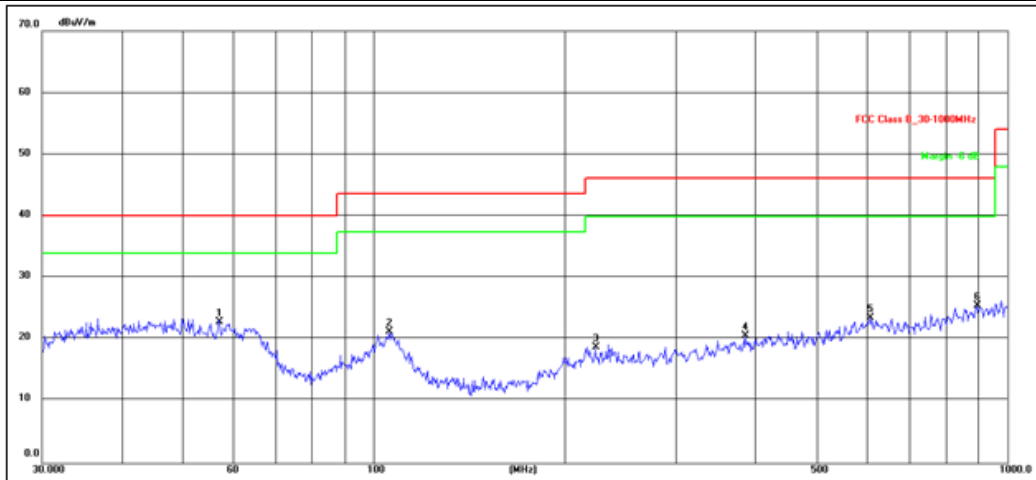
The scanning waveforms please refer to the next page.

Test Model	PDT-SWR	Test Mode	Working
Environmental Conditions	24.6°C, 54.1% RH	Detector Function	Quasi-peak
Pol	Vertical	Distance	3m
Test Engineer	Ben Jin	Test Voltage	AC 120V/60Hz



No.	Frequency (MHz)	Reading (dBuV)	Factor (dB/m)	Level (dBuV/m)	Limit (dBuV/m)	Margin (dB)	Det.
1	31.5095	61.20	-30.29	30.91	40.00	-9.09	QP
2	44.9006	55.97	-28.21	27.76	40.00	-12.24	QP
3	66.0342	62.97	-31.39	31.58	40.00	-8.42	QP
4	100.2286	58.67	-30.11	28.56	43.50	-14.94	QP
5	225.3080	53.39	-29.16	24.23	46.00	-21.77	QP
6	373.3112	49.57	-25.57	24.00	46.00	-22.00	QP

Test Model	PDT-SWR	Test Mode	Working
Environmental Conditions	24.6°C, 54.1% RH	Detector Function	Quasi-peak
Pol	Horizontal	Distance	3m
Test Engineer	Ben Jin	Test Voltage	AC 120V/60Hz



No.	Frequency (MHz)	Reading (dBuV)	Factor (dB/m)	Level (dBuV/m)	Limit (dBuV/m)	Margin (dB)	Det.
1	57.1914	51.95	-29.09	22.86	40.00	-17.14	QP
2	106.0126	51.75	-30.39	21.36	43.50	-22.14	QP
3	223.7334	48.03	-29.21	18.82	46.00	-27.18	QP
4	386.6338	45.92	-25.25	20.67	46.00	-25.33	QP
5	607.7867	44.60	-21.02	23.58	46.00	-22.42	QP
6	893.8567	44.40	-18.87	25.53	46.00	-20.47	QP

Note: Pre-Scan all mode, Thus record worse case mode result in this report.
 Corrected Reading: Factor + Reading = Level, Level - Limit =Margin.

4. PHOTOGRAPH



Photo of Power Line Conducted Measurement



Photo of Radiated Measurement

5. EXTERNAL AND INTERNAL PHOTOS OF THE EUT



Fig. 1



Fig. 2



Fig. 3



Fig. 4



Fig. 5



Fig. 6



Fig. 7

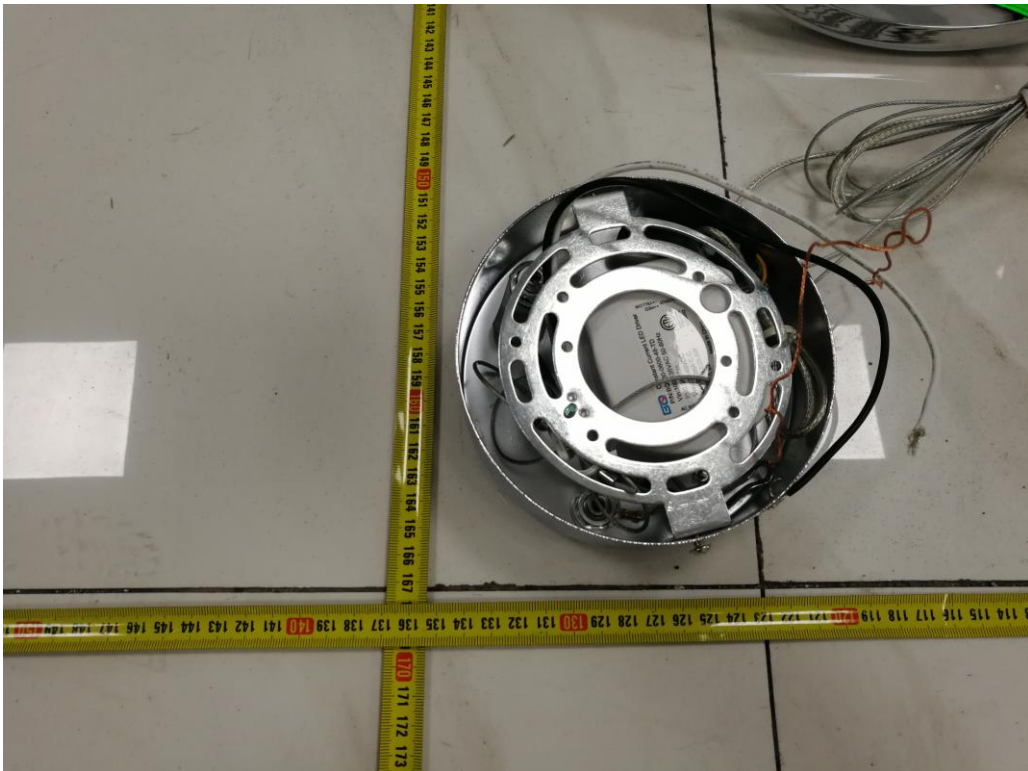


Fig. 8

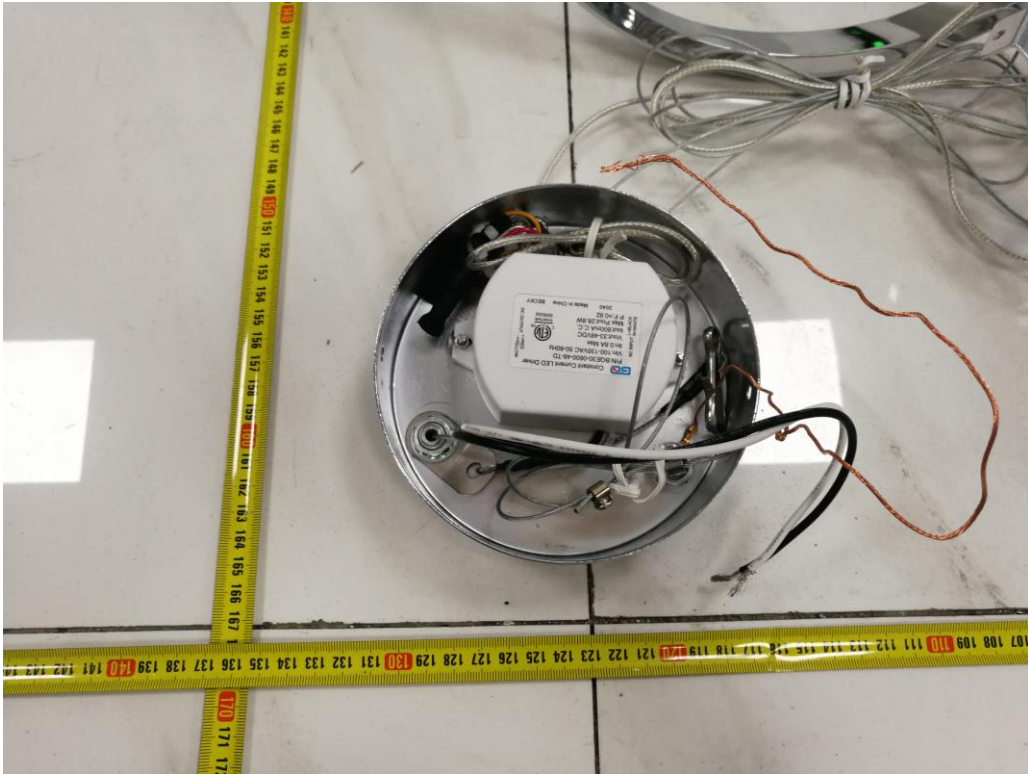


Fig. 9

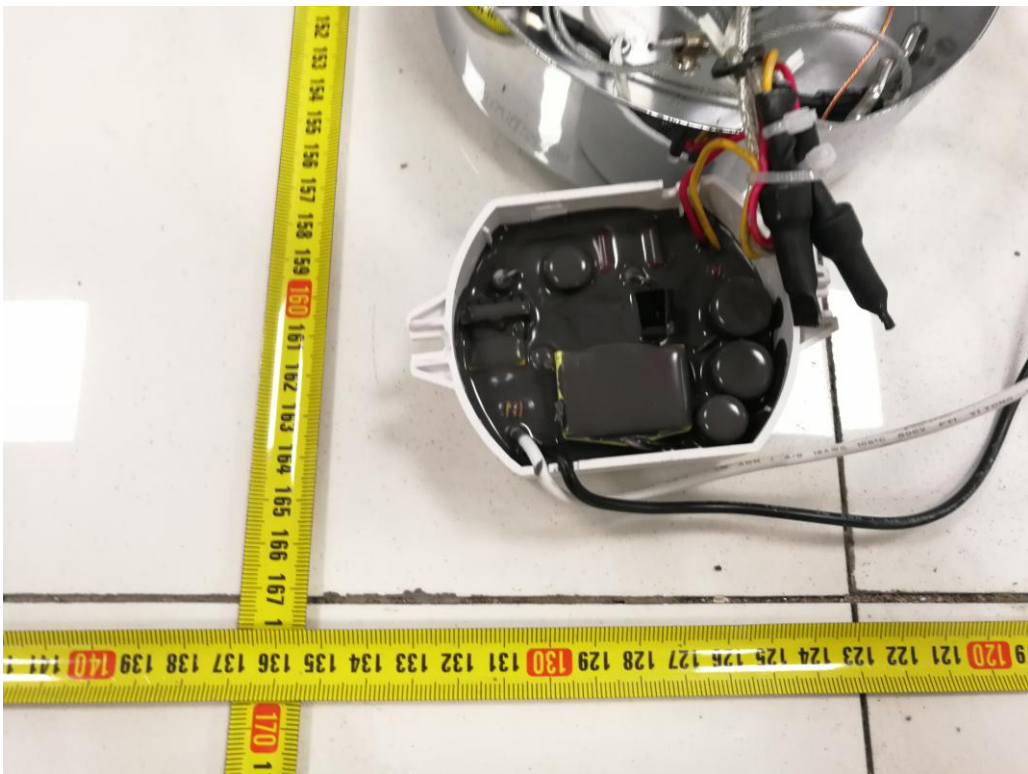


Fig. 10

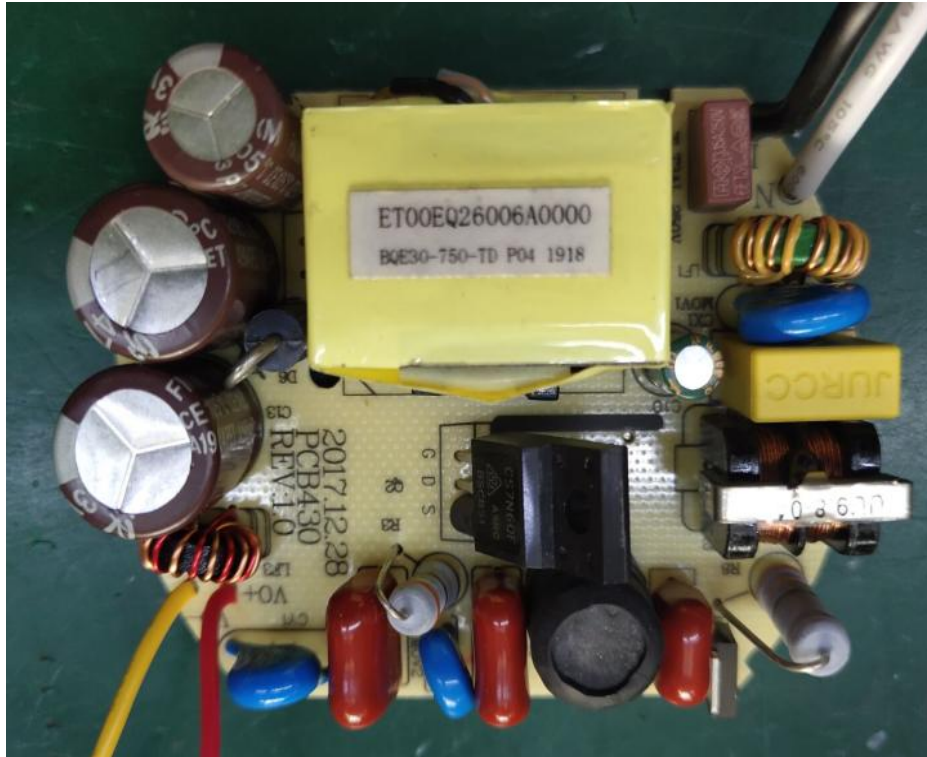


Fig. 11

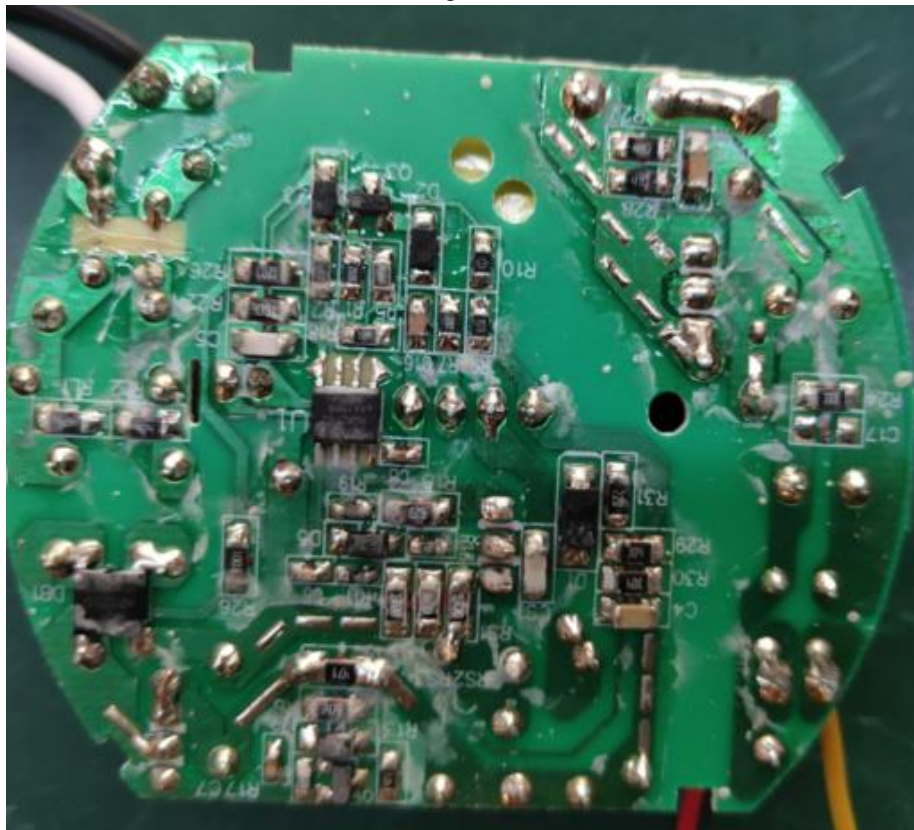


Fig. 12

-----THE END OF TEST REPORT-----