



# EMC TEST REPORT

**Report No.:** 20230517G05491X-W1

**Product Name:** Smart LTE Terminal

**FCC ID:** 2AYEZ-TE620G

**Model No. :** TE620,TELOX-TE620,Telo-TE620,TE620A,TE620B,TE620C,TE620D,TE620E,TE620F,TELOX\_TE620G,TE620H,TE620J,TE620K,TE620L,TE620M,TE620Q,TE620R,TE620S,TE620T,TE620U,TE620V,TE620X,TE620Y

**Applicant:** Telo Communication (Shenzhen) Co., Ltd

**Address:** 6/F, No.42 Liuxian 1st Road, Bao'an District, Shenzhen, China

**Received Date:** 2023.07.18

**Dates of Testing:** 2023.07.18~2023.07.21

**Issued by:** CCIC Southern Testing Co., Ltd.

**Lab Location:** Electronic Testing Building, No. 43 Shahe Road, Xili Street,  
Nanshan District, Shenzhen, Guangdong, China.

**Tel:** 86 755 26627338    **Fax:** 86 755 26627238

This test report consists of **43** pages in total. It may be duplicated completely for legal use with the approval of the applicant. It should not be reproduced except in full, without the written approval of our laboratory. The client should not use it to claim product endorsement by CCIC-SET. The test results in the report only apply to the tested sample. The test report shall be invalid without all the signatures of testing engineers, reviewer and approver. Any objections must be raised to CCIC-SET within 15 days since the date when the report is received. It will not be taken into consideration beyond this limit.



### Test Report

**Product Name**..... Telo Communication (Shenzhen) Co., Ltd

**Model No.** ..... TE620,TELOX-TE620,Telo-TE620,TE620A,TE620B,TE620C,TE620D,TE620E,TE620F,TELOX\_TE620G,TE620H,TE620J,TE620K,TE620L,TE620M,TE620Q,TE620R,TE620S,TE620T,TE620U,TE620V,TE620X,TE620Y

**Trade name**..... TELOX

**Applicant**..... Telo Communication (Shenzhen) Co., Ltd

**Applicant Address**..... 6/F, No.42 Liuxian 1st Road, Bao'an District, Shenzhen, China

**Manufacturer** ..... Telo Communication (Shenzhen) Co., Ltd

**Manufacturer Address** .... 6/F, No.42 Liuxian 1st Road, Bao'an District, Shenzhen, China

**Test Standards**..... 47 CFR Part 15 Subpart B

**Test Result**..... PASS

**Tested by** ..... Ruihong Xie  
Ruihong Xie Test Engineer 2023.08.18

**Reviewed by** ..... Chris You  
Chris You Senior Engineer 2023.08.18

**Approved by** ..... Yang Fan  
Yang Fan, Manager 2023.08.18



### TABLE OF CONTENTS

- 1. GENERAL INFORMATION .....4**
- 1.1 EUT Description .....4**
- 1.2 Test Standards and Results .....5**
- Facilities and Accreditations .....6**
- 1.2.1 Facilities .....6
- 1.2.2 Test Environment Conditions .....6
- 1.2.3 Measurement Uncertainty .....6
- 2. TEST CONDITIONS SETTING .....7**
- 2.1 Test Peripherals .....7**
- 2.2 Test Mode .....7**
- 2.3 Test Setup and Equipments List .....8**
- 2.3.1 Conducted Emission .....8
- 2.3.2 Radiated Emission .....9
- 3. 47 CFR PART 15B REQUIREMENTS ..... 11**
- 3.1 Conducted Emission ..... 11**
- 3.1.1 Requirement ..... 11
- 3.1.2 Test Description ..... 11
- 3.1.3 Test Result ..... 11
- 3.2 Radiated Emission .....14**
- 3.2.1 Requirement .....14
- 3.2.2 Test Description ..... 15
- 3.2.3 Test Result ..... 15
- APPENDIX I: PHOTOGRAPHS OF THE EUT .....20**
- APPENDIX II: PHOTOGRAPHS OF EMC TEST CONFIGURATION .....42**

Change History		
Issue	Date	Reason for change
1.0	2023.08.18	First edition



# 1. GENERAL INFORMATION

## 1.1 EUT Description

EUT Name ..... : Smart LTE Terminal  
 Trade Name..... : TELOX

Brand Name..... : TELOX  
 Hardware Version..... : N/A  
 Software Version ..... : N/A  
 Power supply..... : Battery

Brand Name: TELOX  
 Model No.: TSRB-5000(M)  
 Capacitance: 5000mAh  
 Rated Voltage: 4.35V  
 Manufacturer : ShenZhen Wintide Technology Co.,Ltd DongGuan Branch

Adapter1#  
 Model No.: MR-0502000US  
 I/p: 100-240V~50/60Hz , 300mA  
 O/p: 5.0V---2000mA  
 Manufacturer: Shen zhen Mao Two Power Co.,Ltd  
 Model No.: MR-0502000EU Model No.: MR-0502000US  
 I/p: 100-240V~50/60Hz , 300mA  
 O/p: 5.0V---2000mA  
 Manufacturer: Shen zhen Mao Two Power Co.,Ltd  
 I/p: 100-240V~50/60Hz , 300mA  
 O/p: 5.0V---2000mA  
 Manufacturer: Shen zhen Mao Two Power Co.,Ltd

*Note1:*The EUT is a Smart LTE Terminal;

*Note2 :*For a more detailed description, please refer to Specification or User’s Manual supplied by the applicant and/or manufacturer.



## 1.2 Test Standards and Results

The objective of the report is to perform testing according to 47 CFR Part 15 Subpart B:

No.	Identity	Document Title
1	47 CFR Part 15 Subpart B	Radio Frequency Devices

Test detailed items/section required by FCC rules and results are as below:

No.	Section	Description	Result
1	15.107	Conducted Emission	PASS
2	15.109	Radiated Emission	PASS

NOTE:

- (1) The EUT has been tested according to 47 CFR Part 15 Subpart B, Class B. The test procedure is according to ANSI C63.4:2014.



## Facilities and Accreditations

### 1.2.1 Facilities

#### **FCC-Registration No.: CN1283**

CCIC Southern Testing Co., Ltd EMC Laboratory has been registered and fully described in a report filed with the FCC (Federal Communications Commission). The acceptance letter from the FCC is maintained in our files. Designation Number: CN1283, valid time is until Sep.30, 2023.

#### **ISED Registration: 11185A-1**

CCIC Southern Testing Co., Ltd. EMC Laboratory has been registered by Certification and Engineering Bureau of Industry Canada for the performance of radiated measurements with Registration No. 11185A-1 on Aug. 04, 2016, valid time is until Sep.30, 2023.

#### **A2LA Code: 5721.01**

CCIC-SET is a third party testing organization accredited by A2LA according to ISO/IEC 17025. The accreditation certificate number is 5721.01.

### 1.2.2 Test Environment Conditions

During the measurement, the environmental conditions were within the listed ranges:

Temperature (°C):	15°C - 35°C
Relative Humidity (%):	25% -75%
Atmospheric Pressure (kPa):	86kPa-106kPa

### 1.2.3 Measurement Uncertainty

The uncertainty is calculated using the methods suggested in the "Guide to the Expression of Uncertainty in Measurement" (GUM) published by ISO.

Uncertainty of Conducted Emission:	Uc = 3.2 dB (k=2)
Uncertainty of Radiated Emission: (30MHz~1GHz)	Uc = 5.8 dB (k=2)
Uncertainty of Radiated Emission: (1~6GHz)	Uc = 5.1 dB (k=2)
Uncertainty of Radiated Emission: (6~18GHz)	Uc = 5.5 dB (k=2)



## 2. TEST CONDITIONS SETTING

### 2.1 Test Peripherals

The following is a listing of the EUT and peripherals utilized during the performance of EMC test:

#### Support Equipment:

Description	Brand name	Model	Serial No.	FCCID
Notebook	Lenovo	X240	/	/
Mouse	Lenovo	MO20BOA	/	/

#### Support Cable:

Description	Shield Type	Ferrite Core	Length
USB Cable	Un- shielding	/	0.8m

### 2.2 Test Mode

The EUT have the following typical setups during the test:

Setup1: EUT+ Charger;

Setup2: EUT+ Battery

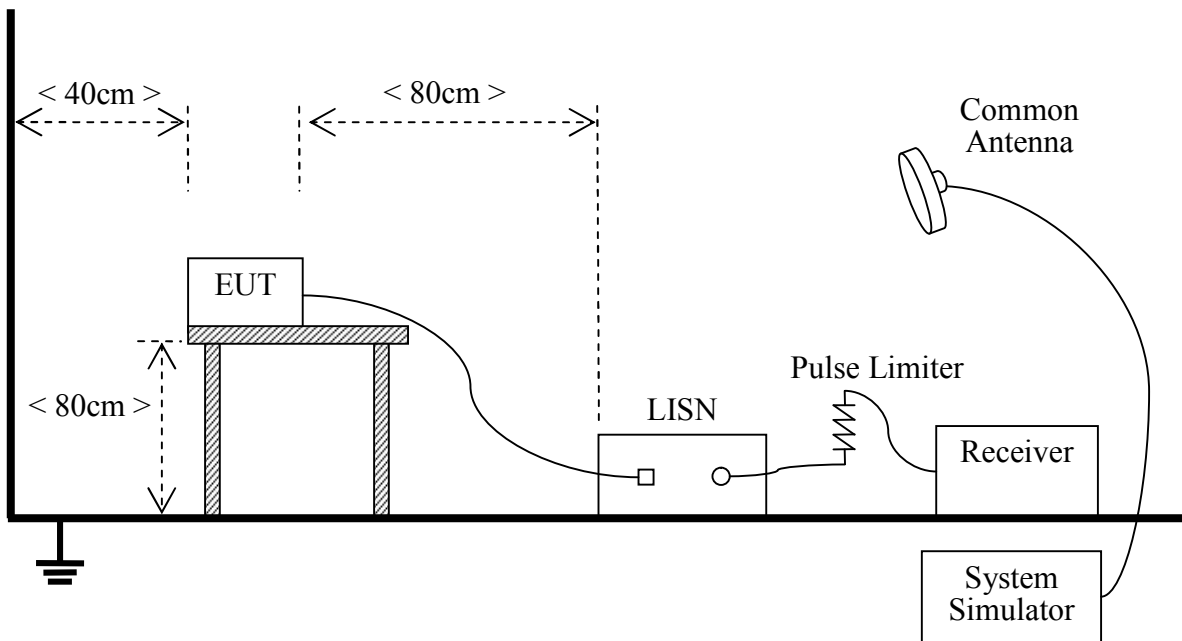
Setup3: EUT + Notebook PC+DATA;

Note1: Model difference: each type is named only.

## 2.3 Test Setup and Equipments List

### 2.3.1 Conducted Emission

#### A. Test Setup:



The EUT is placed on a 0.8m high insulating table, which stands on the grounded conducting floor, and keeps 0.4m away from the grounded conducting wall. The EUT is connected to the power mains through a LISN which provides  $50\Omega/50\mu\text{H}$  of coupling impedance for the measuring instrument. The Common Antenna is used for the call between the EUT and the System Simulator (SS). A Pulse Limiter is used to protect the measuring instrument. The factors of the whole test system are calibrated to correct the reading.

#### B. Equipments List:

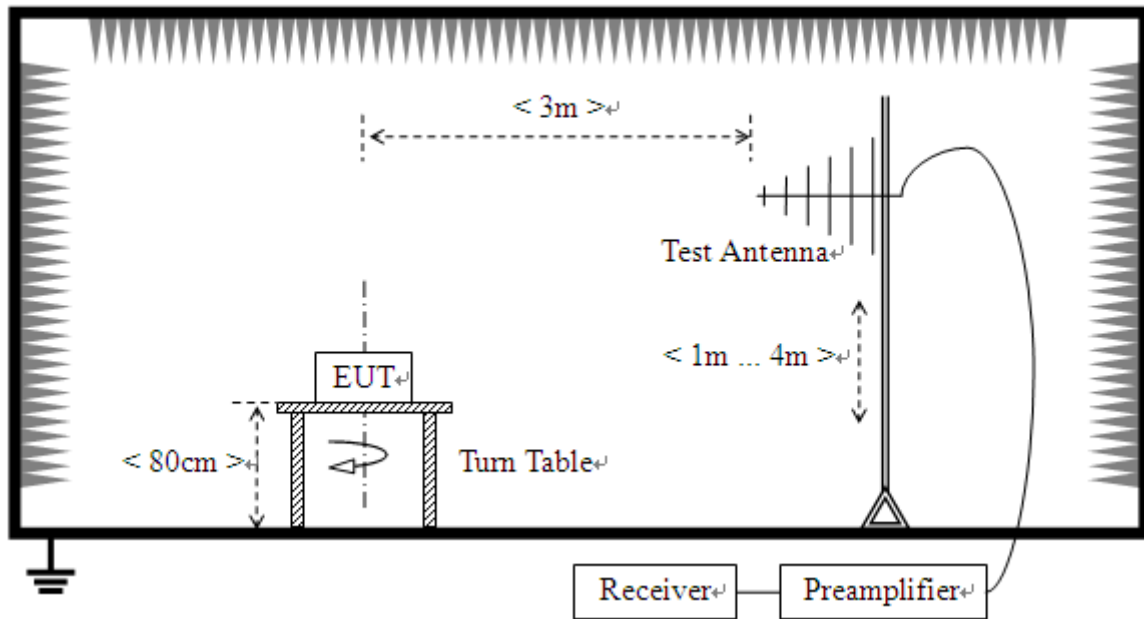
Description	Manufacturer	Model	Serial No.	Calibration Date	Calibration Due. Date
Test Receiver	KEYSIGHT	N9038A	A141202036	2023.06.13	2024.06.12
LISN	ROHDE&SCHWARZ	ENV216	A140701847	2023.06.09	2024.06.08
Cable	MATCHING PAD	W7	/	2023.08.02	2024.08.02



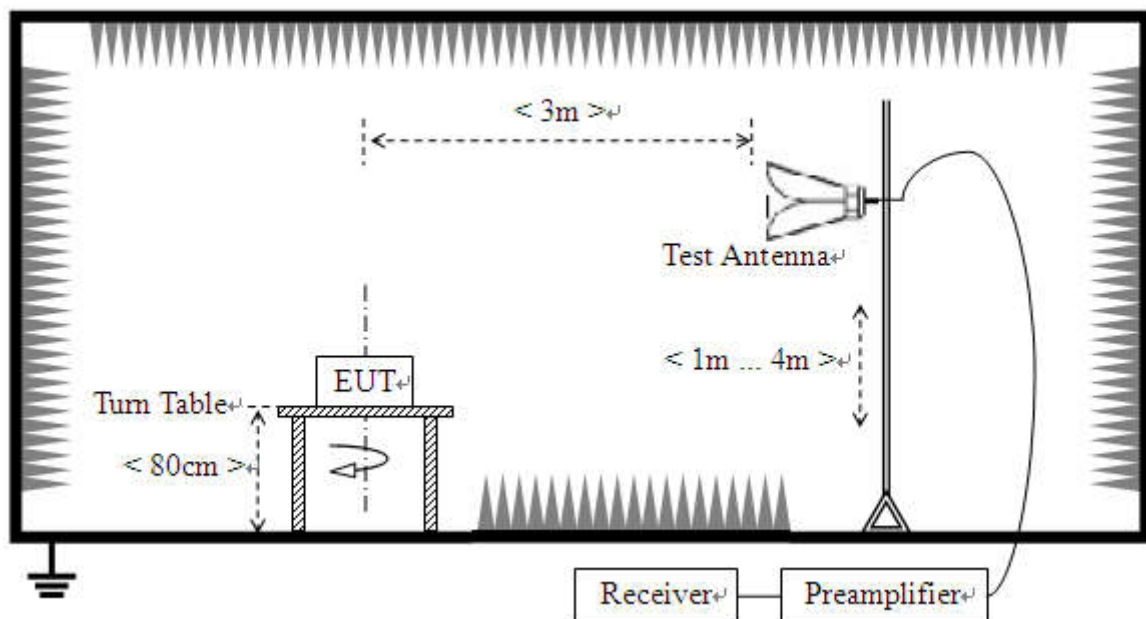
### 2.3.2 Radiated Emission

#### A. Test Setup:

- 1) For radiated emissions from 30MHz to 1GHz



- 2) For radiated emissions above 1GHz



**B. Test Procedure**

The test is performed in a 3m Semi-Anechoic Chamber; the antenna factor, cable loss and so on of the site (factors) is calculated to correct the reading. The EUT is placed on a 0.8m high insulating Turn Table, and keeps 3m away from the Test Antenna, which is mounted on a variable-height antenna master tower.

For the test Antenna:

- 1) In the frequency range above 30MHz, Bi-Log Test Antenna (30MHz to 1GHz) and Horn Test Antenna (above 1GHz) are used. Test Antenna is 3m away from the EUT. Test Antenna height is varied from 1m to 4m above the ground to determine the maximum value of the field strength. The emission levels at both horizontal and vertical polarizations should be tested.

**C. Equipments List:**

Description	Manufacturer	Model	Serial No.	Calibration Date	Calibration Due. Date
EMI Test Receiver	ROHDE&SCHWARZ	ESIB7	A0501375	2023.03.16	2024.03.15
Broadband Ant.	2786	ETC	A150402239	2021.03.04	2024.03.03
3M Anechoic Chamber	Albatross	SAC-3MAC 9*6*6m	A0412375	2021.03.26	2024.03.25
EMI Test Receiver	ROHDE&SCHWARZ	ESW26	A180502935	2023.06.08	2024.06.07
5M Anechoic Chamber	Albatross	SAC-5MAC 12.8x6.8x6.4m	A0304210	2022.03.25	2025.06.07
EMI Horn Ant.	ROHDE&SCHWARZ	HF906	A0304225	2022.04.12	2025.04.11



### 3. 47 CFR PART 15B REQUIREMENTS

#### 3.1 Conducted Emission

##### 3.1.1 Requirement

According to FCC section 15.107, the radio frequency voltage that is conducted back onto the AC power line on any frequency within the band 150kHz to 30MHz shall not exceed the limits in the following table, as measured using a 50 $\mu$ H/50 $\Omega$  line impedance stabilization network (LISN).

Frequency range (MHz)	Conducted Limit (dB $\mu$ V)	
	Quasi-peak	Average
0.15 - 0.50	66 to 56	56 to 46
0.50 - 5	56	46
5 - 30	60	50

**Note:**

- The limit subjects to the Class B digital device.
- The lower limit shall apply at the band edges.
- The limit decreases linearly with the logarithm of the frequency in the range 0.15 - 0.50MHz.

##### 3.1.2 Test Description

See section 2.3.1 of this report.

##### 3.1.3 Test Result

The maximum conducted interference is searched using Peak (PK), Quasi-peak (QP) and Average (AV) detectors; the emission levels more than the AV and QP limits, and that have narrow margins from the AV and QP limits will be re-measured with AV and QP detectors. Tests for both L phase and N phase lines of the power mains connected to the EUT are performed. All test modes are considered, refer to recorded points and plots below.

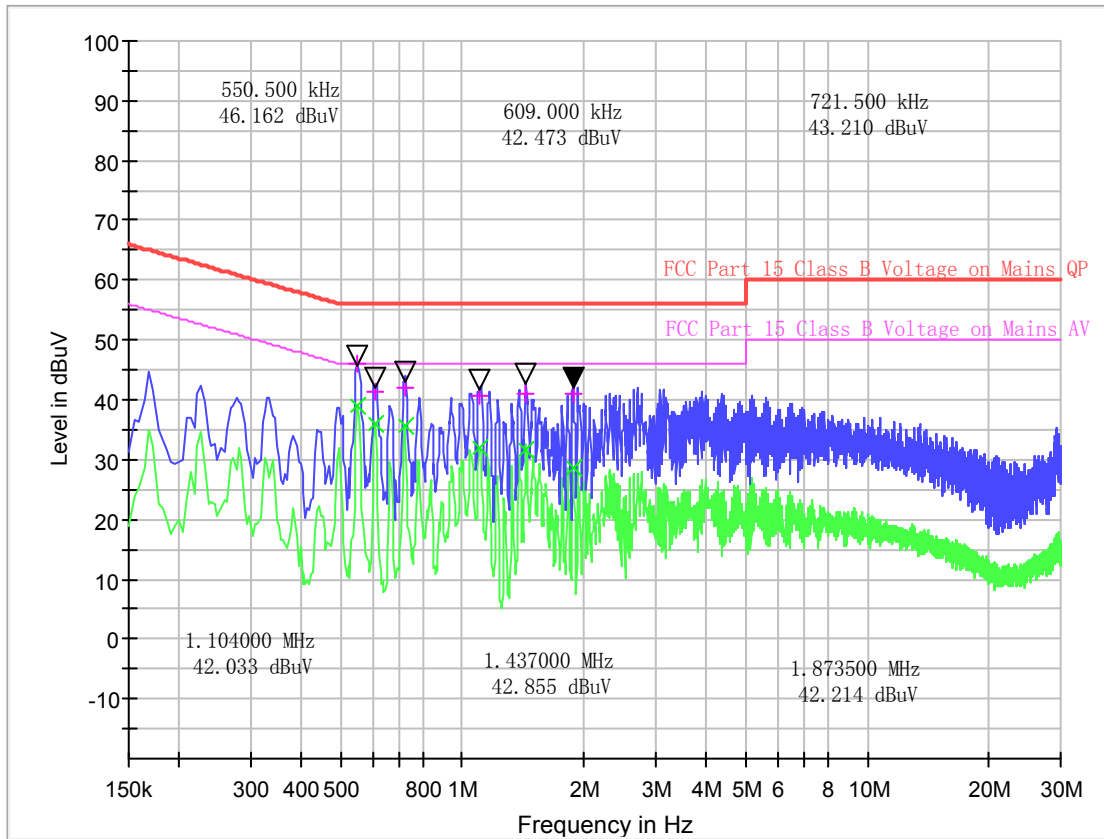
**Note:**

Devices subject to Part 15 must be tested for all available U.S. voltages and frequencies (such as a Nominal 120V AC,50/60Hz) for which the device is capable of operation. A device rated for 50/60 Hz operation need not be tested at both frequencies provided the radiated and line conducted emissions are the same at both frequencies.



**Test voltage and frequency (120V AC,60Hz)**

**A. Mains terminal disturbance voltage, L phase,Setup 3**

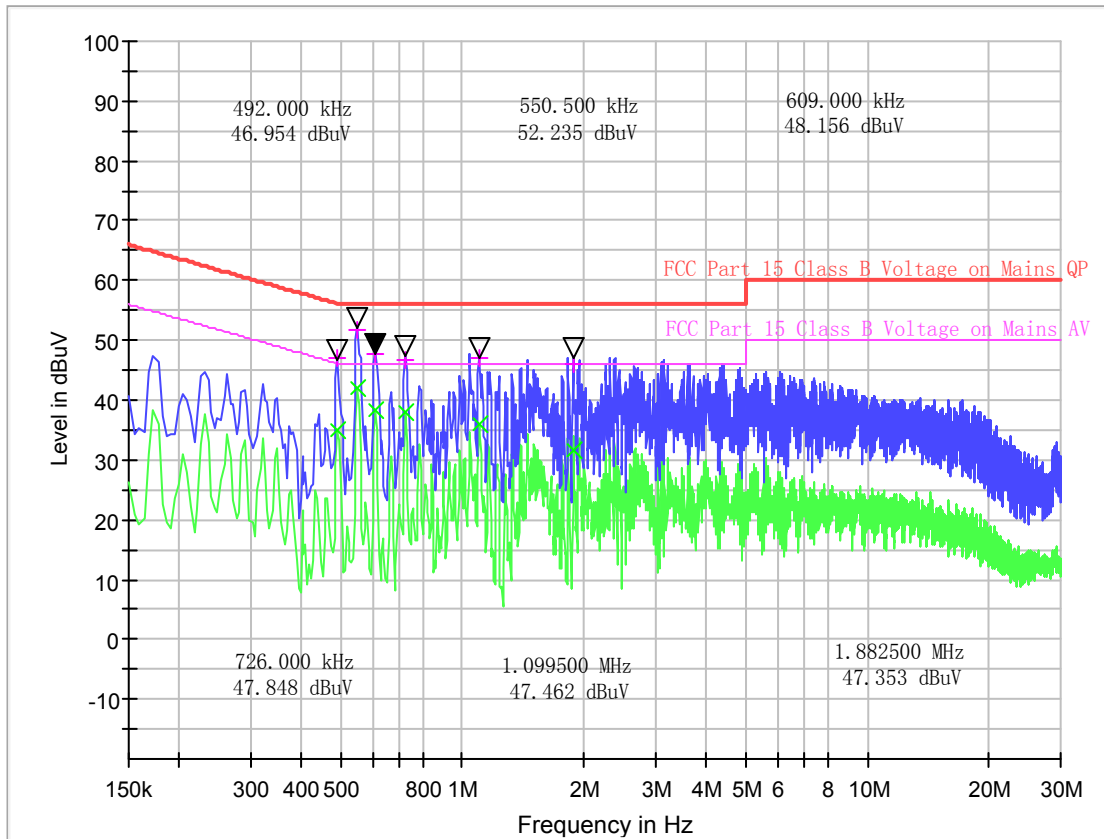


(Plot A: L Phase)

Frequency (MHz)	QuasiPeak (dB $\mu$ V)	CAverage (dB $\mu$ V)	Cabel Loss (dB)	Corr. (dB)	Margin - QPK	Limit - QPK	Margin - AV	Limit - AV (dB $\mu$ V)
0.550500	46.20	38.95	0.1	10.4	9.80	56.0	7.05	46.0
0.609000	41.49	35.88	0.1	10.4	14.51	56.0	10.12	46.0
0.721500	42.10	35.62	0.1	10.4	13.90	56.0	10.38	46.0
1.104000	40.62	32.03	0.2	10.4	15.38	56.0	13.97	46.0
1.437000	40.94	31.59	0.2	10.4	15.06	56.0	14.41	46.0
1.873500	40.94	28.60	0.2	10.4	15.06	56.0	17.40	46.0



**B. Mains terminal disturbance voltage, N phase, Setup 3**



(Plot B: N Phase)

Frequency (MHz)	QuasiPeak (dB $\mu$ V)	CAverage (dB $\mu$ V)	Cabel Loss (dB)	Corr. (dB)	Margin - QPK	Limit - QPK	Margin - AV	Limit - AV (dB $\mu$ V)
0.492000	46.95	35.02	0.1	10.5	9.18	56.1	11.11	46.1
0.550500	51.71	42.12	0.1	10.5	4.29	56.0	3.88	46.0
0.609000	47.56	38.40	0.1	10.5	8.44	56.0	7.60	46.0
0.726000	46.56	38.13	0.1	10.6	9.44	56.0	7.87	46.0
1.099500	47.02	36.00	0.2	10.5	8.98	56.0	10.00	46.0
1.882500	45.99	31.57	0.2	10.5	10.01	56.0	14.43	46.0



## 3.2 Radiated Emission

### 3.2.1 Requirement

According to FCC section 15.109, the field strength of radiated emissions from unintentional radiators at a distance of 3 meters shall not exceed the following values:

Frequency range (MHz)	Field Strength		Field Strength Limitation at 3m Measurement Dist	
	$\mu\text{V/m}$	Dist	( $\text{uV/m}$ )	( $\text{dBuV/m}$ )
30.0 - 88.0	100	3m	100	20log 100
88.0 - 216.0	150	3m	150	20log 150
216.0 - 960.0	200	3m	200	20log 200
Above 960.0	500	3m	500	20log 500

- a) For frequencies above 1000MHz, the field strength limits are based on average detector. When average radiated emission measurements are specified in this part, including emission measurements below 1000MHz, there also is a limit on the radio frequency emissions, as measured using instrumentation with a peak detector function, corresponding to 20dB above the maximum permitted average limit for the frequency being investigated unless a different peak emission limit is otherwise specified in the rules.
- b) Test Antenna is 3m away from the EUT. Test Antenna height is varied from 1m to 4m above the ground to determine the maximum value of the field strength.
- c) For below 1G :QP detector RBW 120kHz ,VBW 300kHz.

For Above 1G: PK detector RBW 1MHz,VBW 3MHz for PK value ;AV detector RBW 1MHz, VBW 10Hz for AV value.

#### Note:

- 1) The tighter limit shall apply at the boundary between two frequency range.
- 2) Limitation expressed in  $\text{dBuV/m}$  is calculated by  $20\log \text{Emission Level}(\text{uV/m})$ .
- 3) If measurement is made at 3m distance, then F.S Limitation at 3m distance is adjusted by using the formula of  $Ld1 = Ld2 * (d2/d1)^2$

Example:

F.S Limit at 30m distance is  $30\text{uV/m}$ , then F.S Limitation at 3m distance is adjusted as

$$Ld1 = L1 = 30\text{uV/m} * (10)^2 = 100 * 30\text{uV/m}.$$



### **3.2.2 Test Description**

See section 2.3.2 of this report.

### **3.2.3 Test Result**

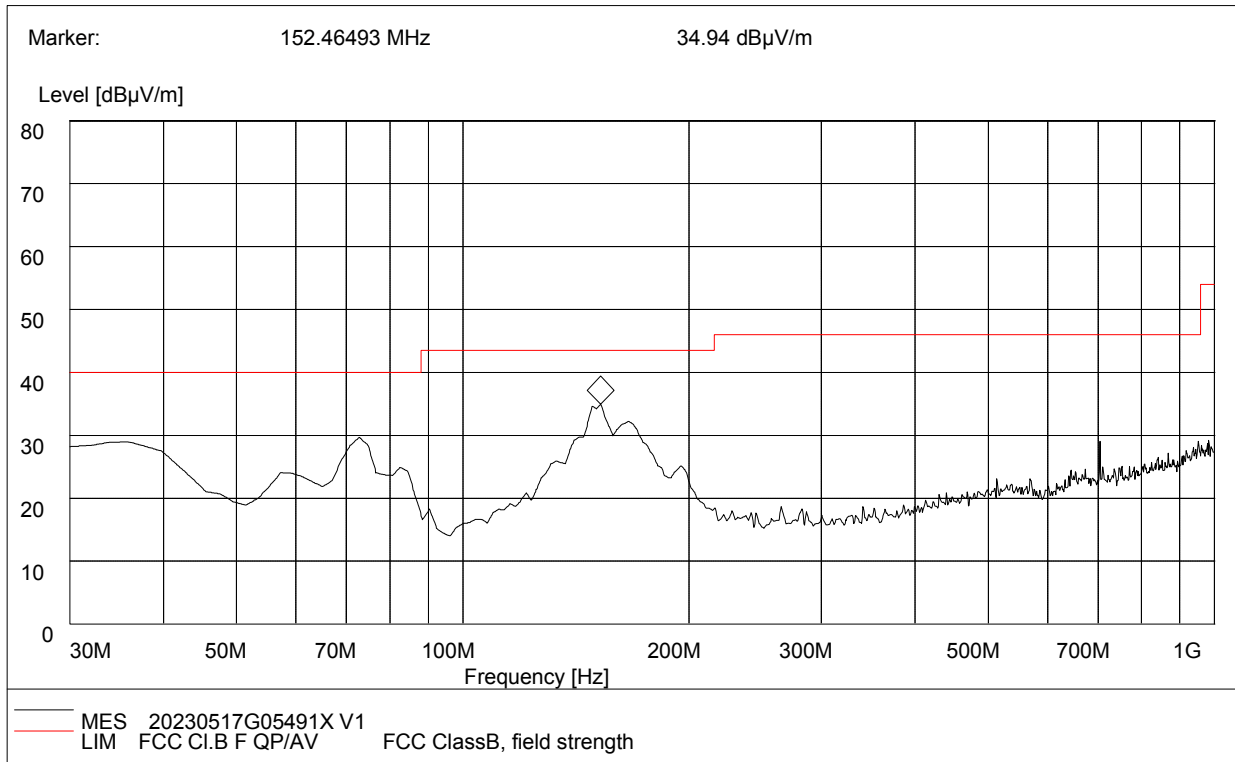
The maximum radiated emission is searched using PK, QP and AV detectors; the emission levels more than the limits, and that have narrow margins from the limits will be re-measured with AV and QP detectors. Both the vertical and the horizontal polarizations of the Test Antenna are considered to perform the tests. All test modes are considered, refer to recorded points and plots below.

The amplitude of spurious emissions which are attenuated more than 20 dB below the permissible value need not be reported.

Note: All radiated emission tests were performed in X, Y, Z axis direction, and only the worst axis test condition was recorded in this test report.



**A.Radiation disturbances, antenna polarization:Vertical,Setup1**



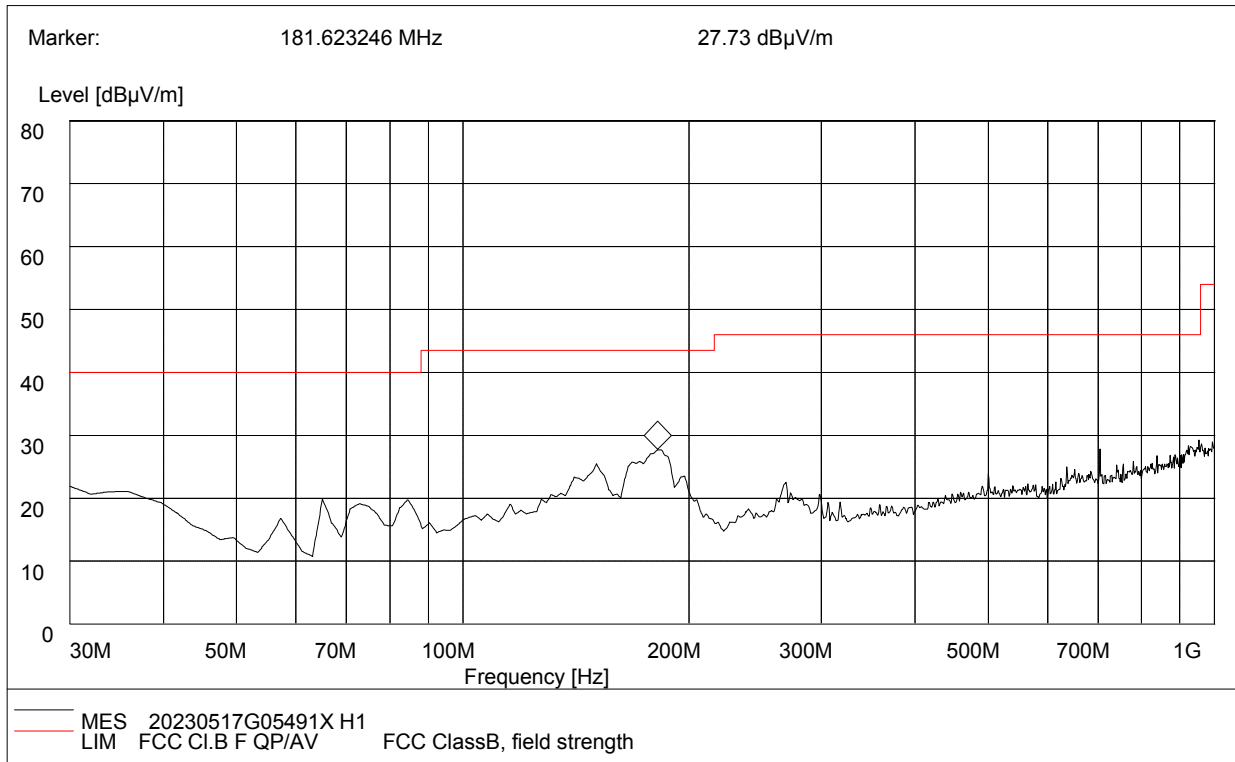
(Plot C: Test Antenna Vertical 30M - 1G)

Frequency (MHz)	QuasiPeak (dBµV/m)	Bandwidth (kHz)	Antenna height (cm)	Limit (dBµV/m)	Margin (dB)	Antenna	Cable Loss(dB)	ANT. Factor(dB )	Verdict
35.83	27.97	120.000	101	40.00	27.97	Vertical	0.5	16.2	Pass
72.76	28.67	120.000	104	40.00	28.67	Vertical	0.8	6.2	Pass
152.46	33.94	120.000	103	43.50	33.94	Vertical	1	11.3	Pass
166.07	31.19	120.000	103	43.50	31.19	Vertical	1.2	11.6	Pass
568.45	22.04	120.000	102	46.00	22.04	Vertical	1.5	18.3	Pass
704.58	28.07	120.000	105	46.00	28.07	Vertical	1.8	19.7	Pass





**B.Radiation disturbances, antenna polarization: Horizontal,Setup1**

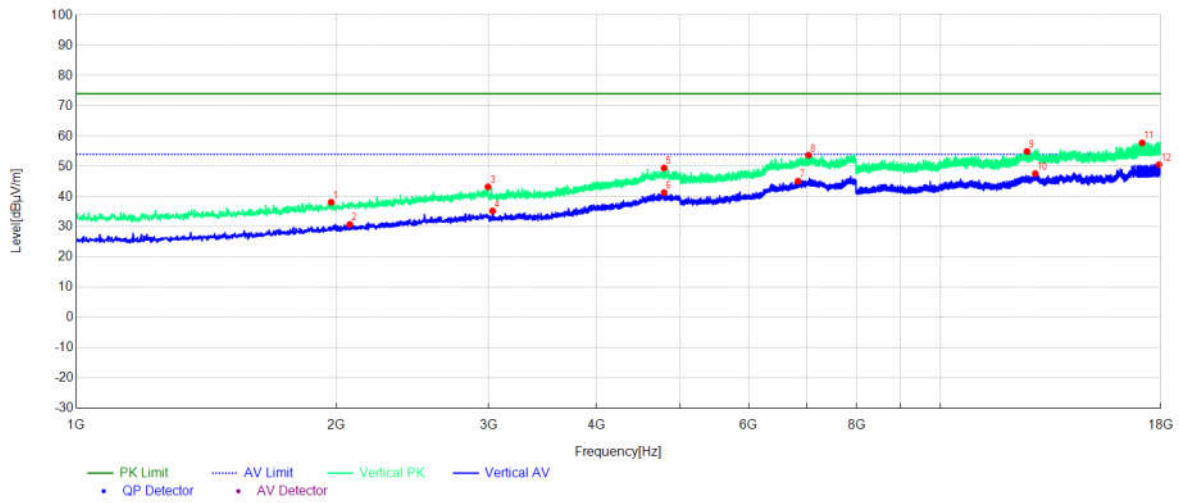


(Plot D: Test Antenna Horizontal 30M - 1G)

Frequency (MHz)	QuasiPeak (dBµV/m)	Bandwidth (kHz)	Antenna height (cm)	Limit (dBµV/m)	Margin (dB)	Antenna	Cable Loss(dB)	ANT. Factor(dB)	Verdict
30.00	20.87	120.000	104	40.00	19.13	Horizontal	0.5	18.8	Pass
64.98	18.90	120.000	104	40.00	21.10	Horizontal	0.8	5.6	Pass
150.52	24.51	120.000	106	43.50	18.99	Horizontal	1	11.4	Pass
181.63	26.73	120.000	107	43.50	16.77	Horizontal	1.2	9.9	Pass
269.09	21.52	120.000	103	46.00	24.48	Horizontal	1.2	13.4	Pass
704.54	26.84	120.000	101	46.00	19.16	Horizontal	1.8	20.1	Pass



**A.Radiation disturbances, antenna polarization: Horizontal,Setup1**

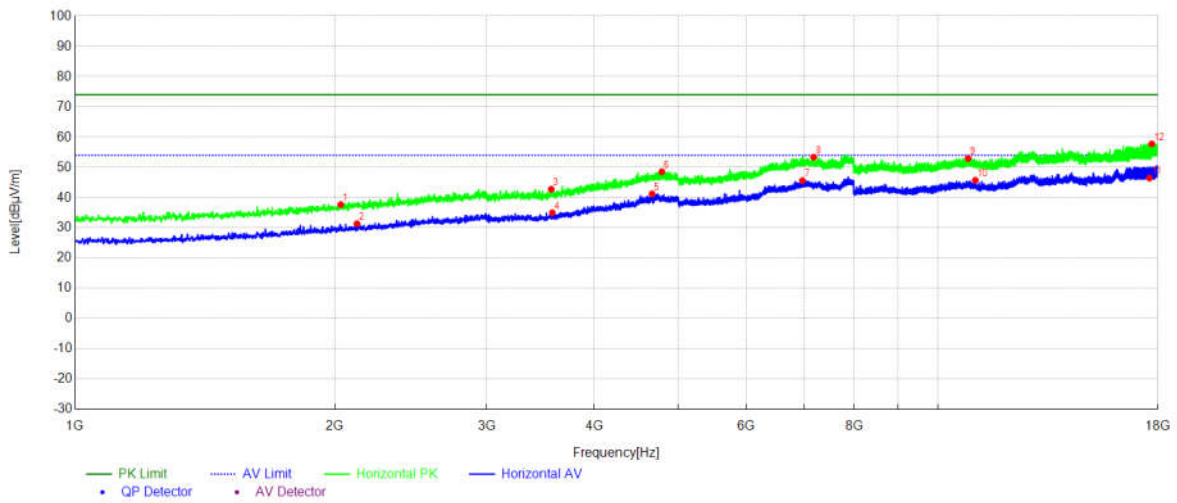


(Plot M: Test Antenna Horizontal 1G – 18G)

N O	Freq. [MHz]	Level [dBµV/m]	Factor [dB]	Limit [dBµV/m]	Margin[dB µV/m]	Trace	Height [cm]	Angle [°]	Polarity
1	1972.50	38.14	-11.99	74.00	35.86	PK	106	232	Vertical
2	2072.81	30.79	-11.70	54.00	23.21	AV	109	220	Vertical
3	2996.00	43.22	-8.62	74.00	30.78	PK	109	323	Vertical
4	3033.40	35.25	-8.51	54.00	18.75	AV	100	65	Vertical
5	4789.68	49.43	-0.85	74.00	24.57	PK	102	347	Vertical
6	4789.68	41.34	-0.85	54.00	12.66	AV	103	342	Vertical
7	6843.48	45.10	3.07	54.00	8.90	AV	106	89	Vertical
8	7037.30	53.68	3.37	74.00	20.32	PK	104	124	Vertical
9	12596.86	54.93	7.34	74.00	19.07	PK	107	256	Vertical
1	12877.39	47.59	7.97	54.00	6.41	AV	108	27	Vertical
1	17121.01	57.76	11.90	74.00	16.24	PK	104	273	Vertical
1	17903.09	50.57	14.67	54.00	3.43	AV	105	45	Vertical



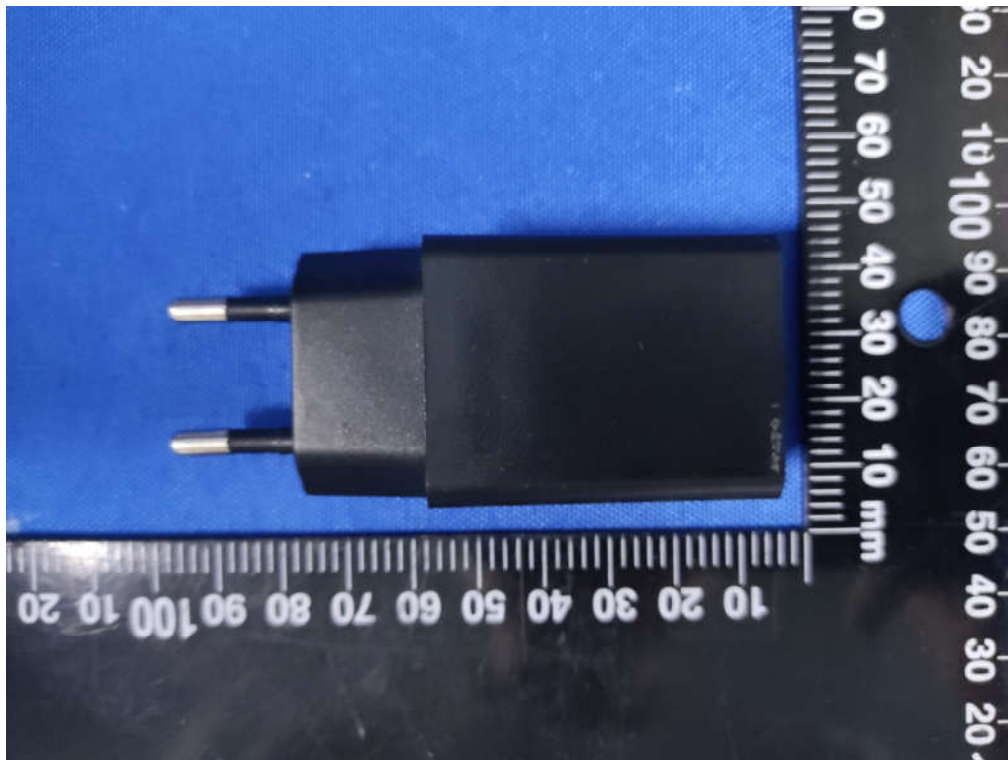
**B.Radiation disturbances, antenna polarization: Vertical,Setup1**

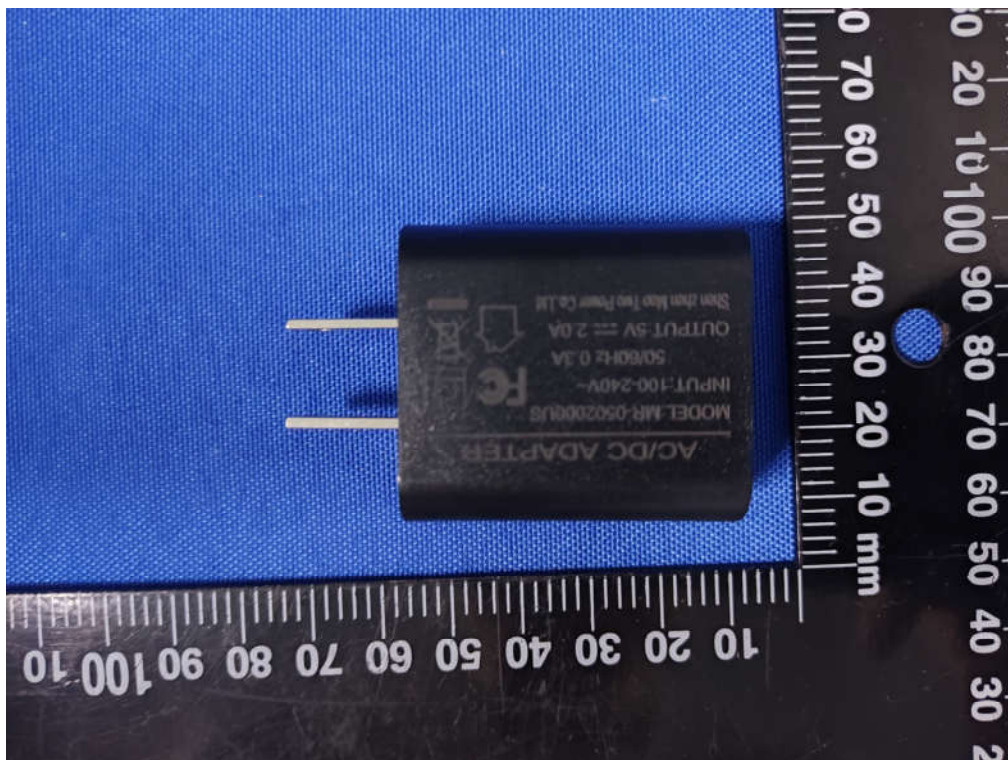


(Plot N: Test Antenna Vertical 1G – 18G)

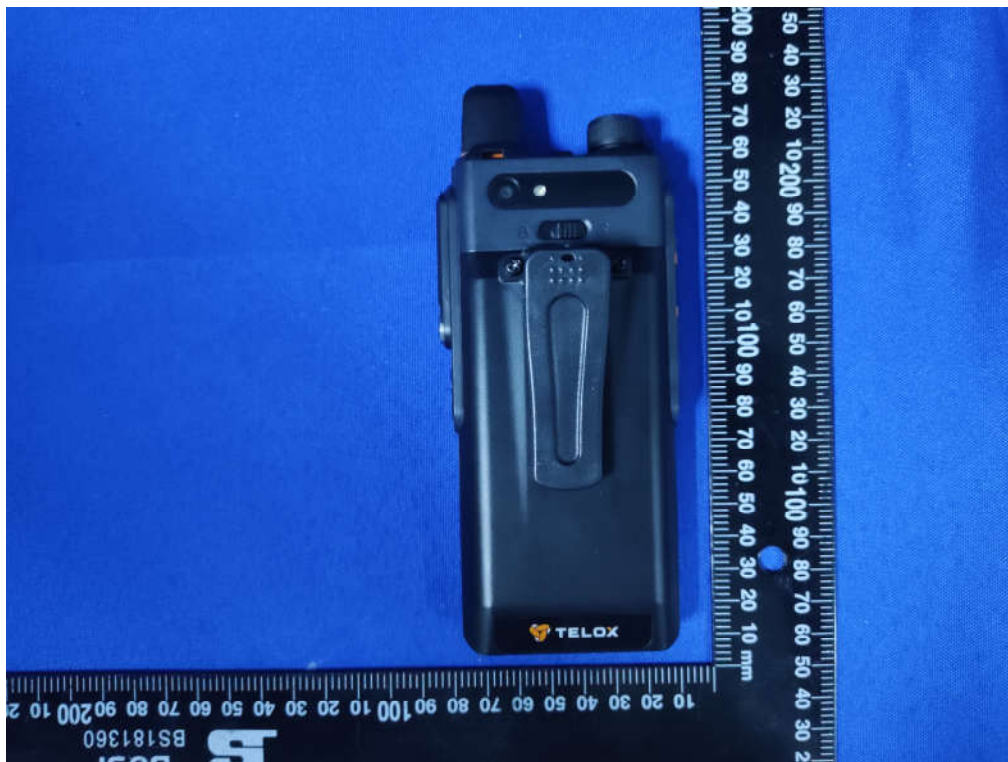
NO.	Freq. [MHz]	Level [dBµV/m]	Factor [dB]	Limit [dBµV/m]	Margin[dB µV/m]	Trace	Height [cm]	Angle [°]	Polarity
1	2032.00	37.69	-11.81	74.00	36.31	PK	103	291	Horizontal
2	2122.11	31.37	-11.56	54.00	22.63	AV	107	263	Horizontal
3	3563.86	42.76	-6.94	74.00	31.24	PK	104	70	Horizontal
4	3574.06	34.99	-6.88	54.00	19.01	AV	104	107	Horizontal
5	4663.87	41.24	-1.24	54.00	12.76	AV	108	49	Horizontal
6	4787.98	48.56	-0.86	74.00	25.44	PK	106	73	Horizontal
7	6967.60	45.59	3.29	54.00	8.41	AV	105	224	Horizontal
8	7180.12	53.36	3.47	74.00	20.64	PK	100	220	Horizontal
9	10843.98	52.92	6.52	74.00	21.08	PK	104	315	Horizontal
10	11053.11	45.73	6.61	54.00	8.27	AV	106	187	Horizontal
11	17591.96	46.46	12.79	54.00	3.23	AV	103	124	Horizontal
12	17702.47	57.74	13.68	74.00	16.26	PK	108	123	Horizontal

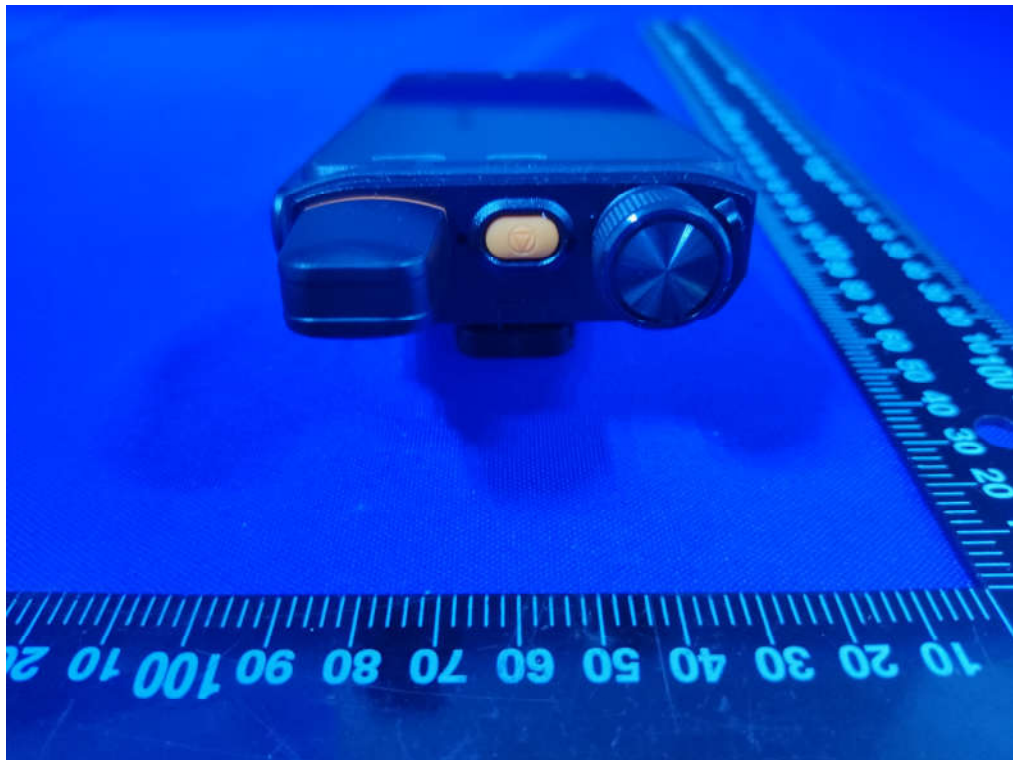
### Appendix I: Photographs of the EUT



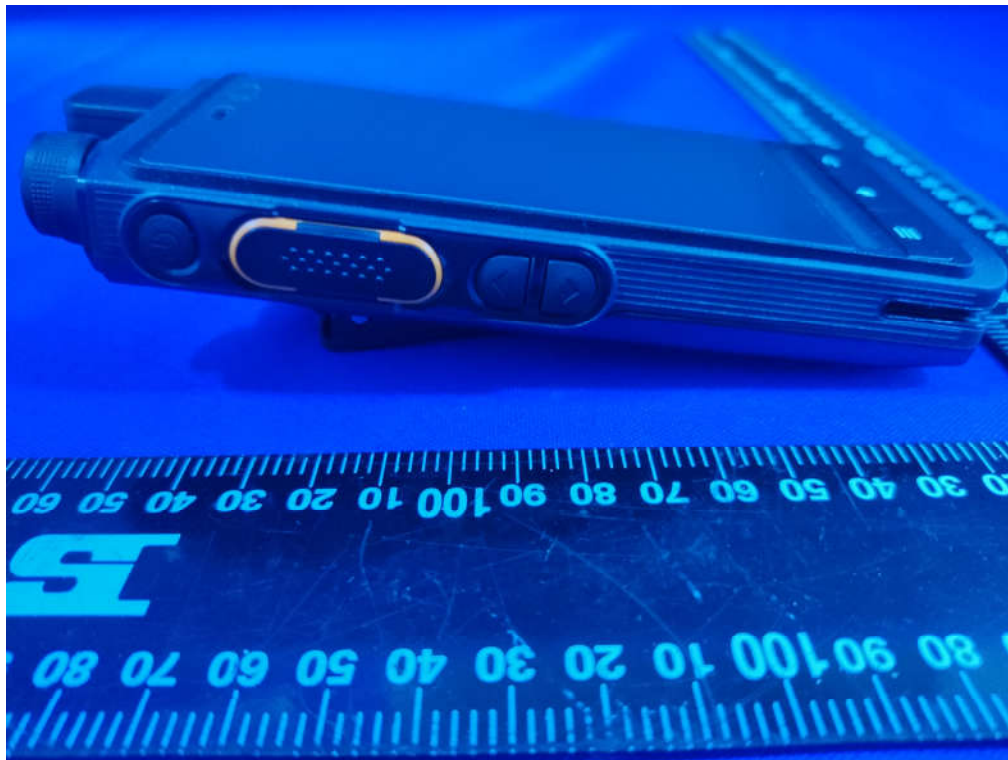


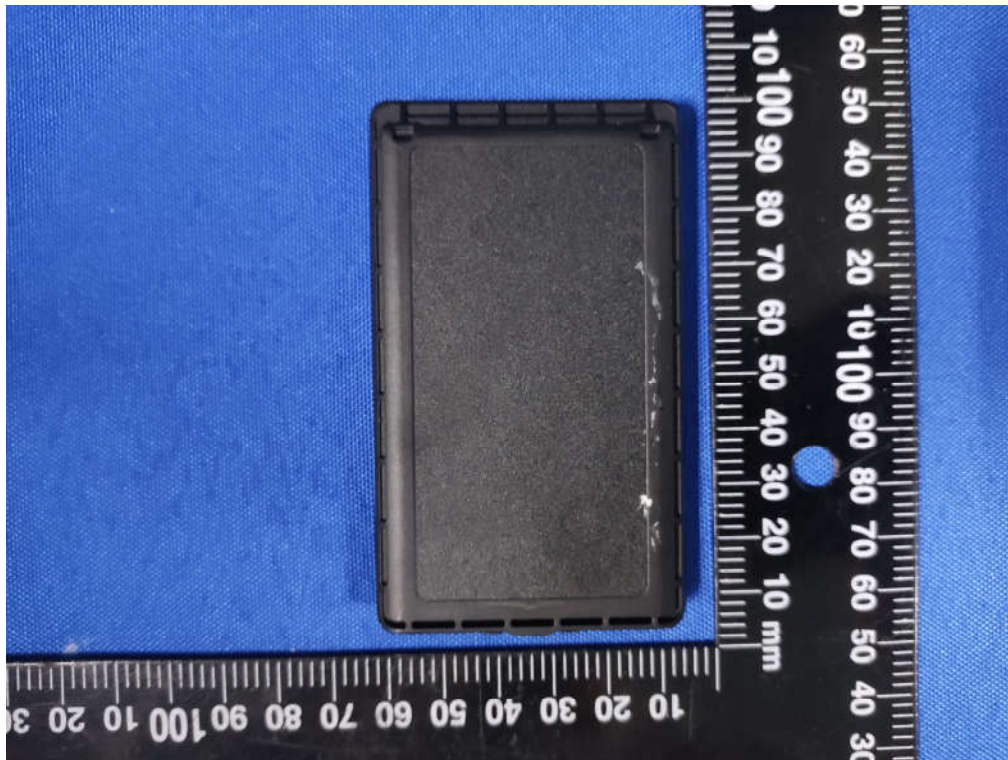


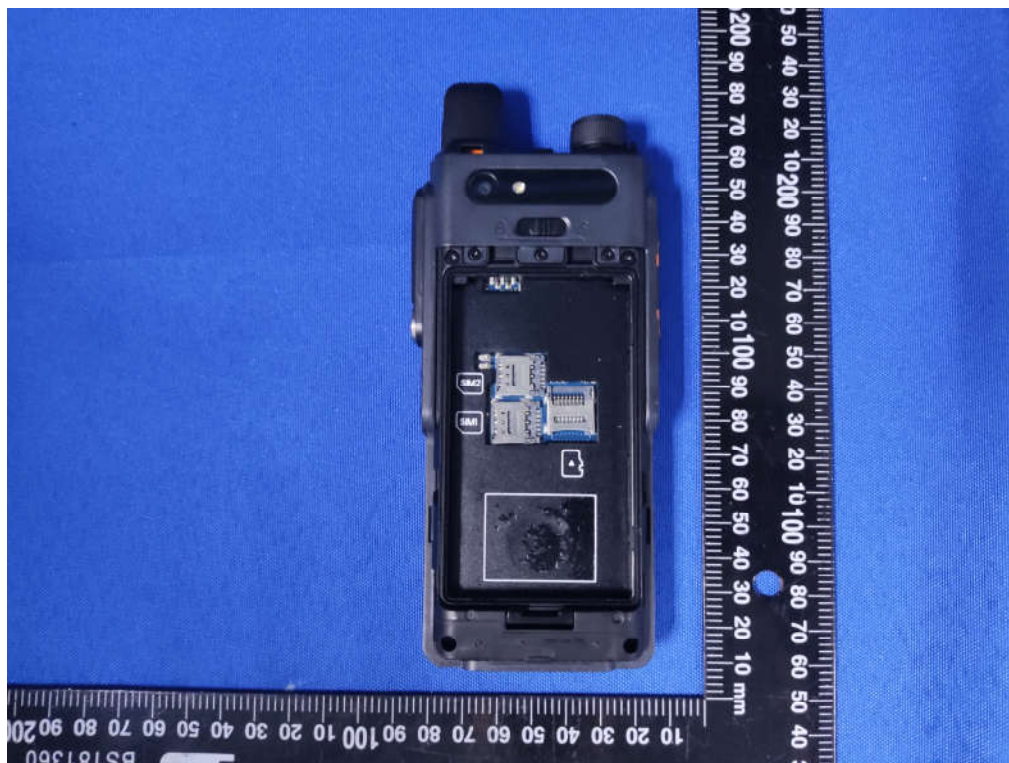
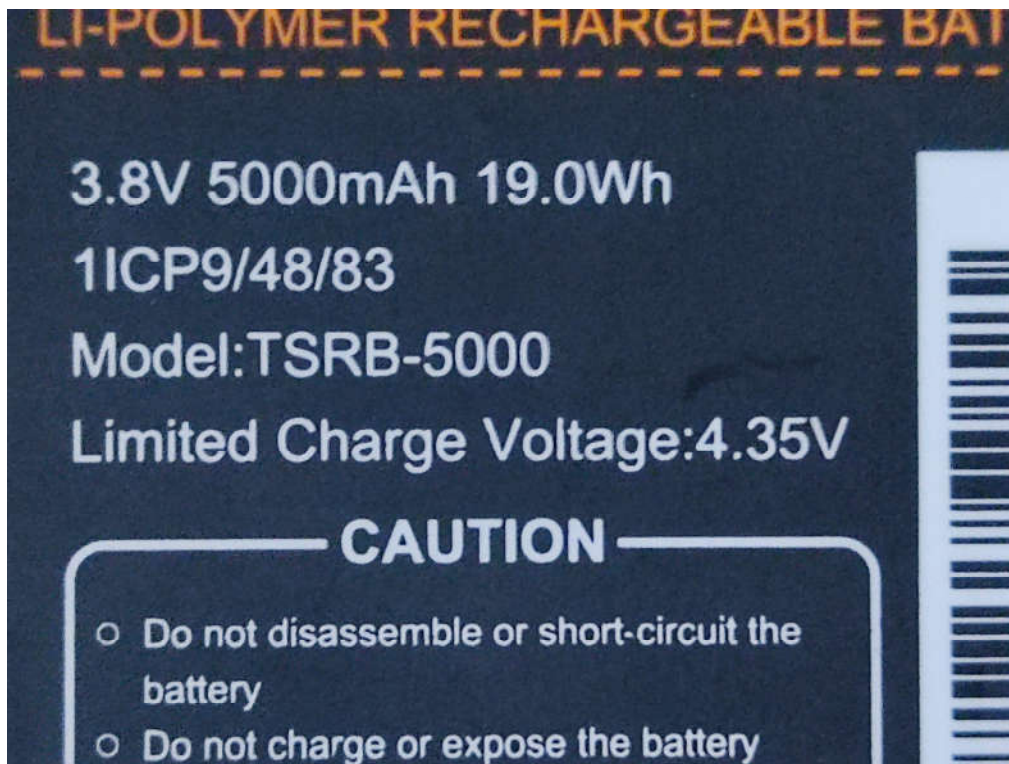


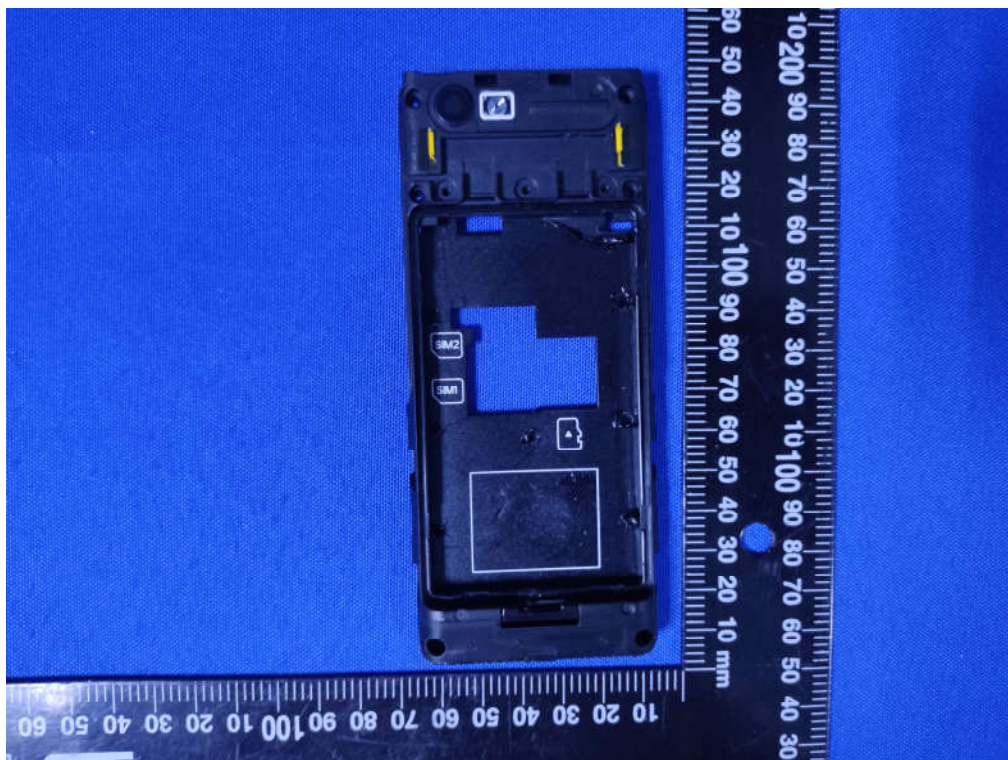


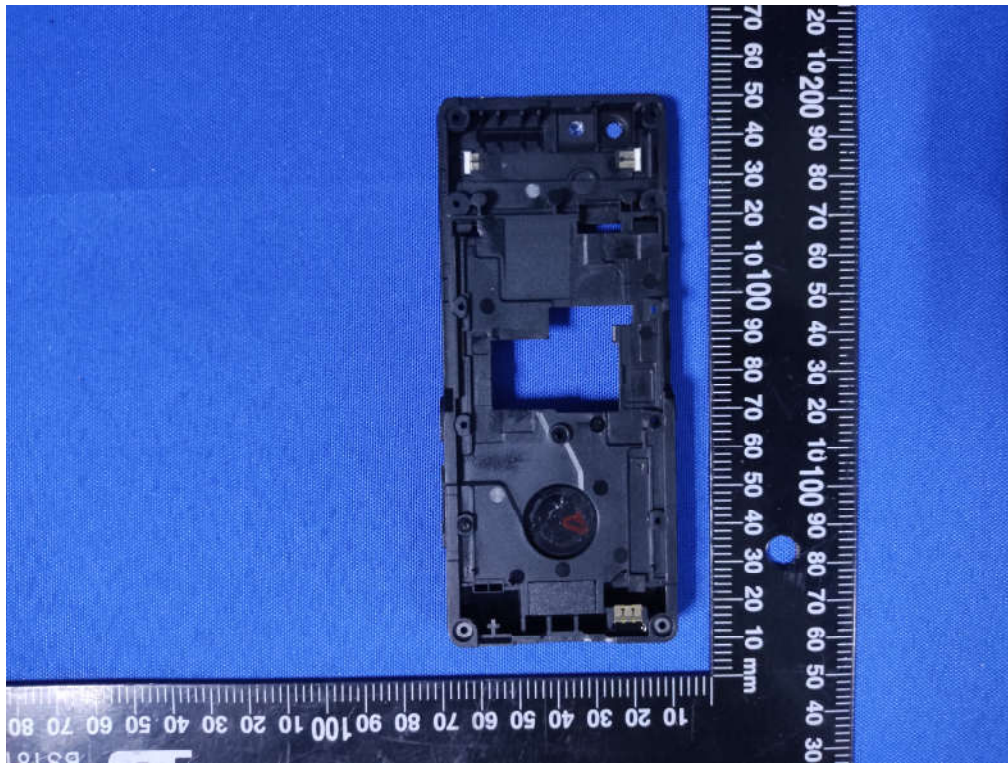




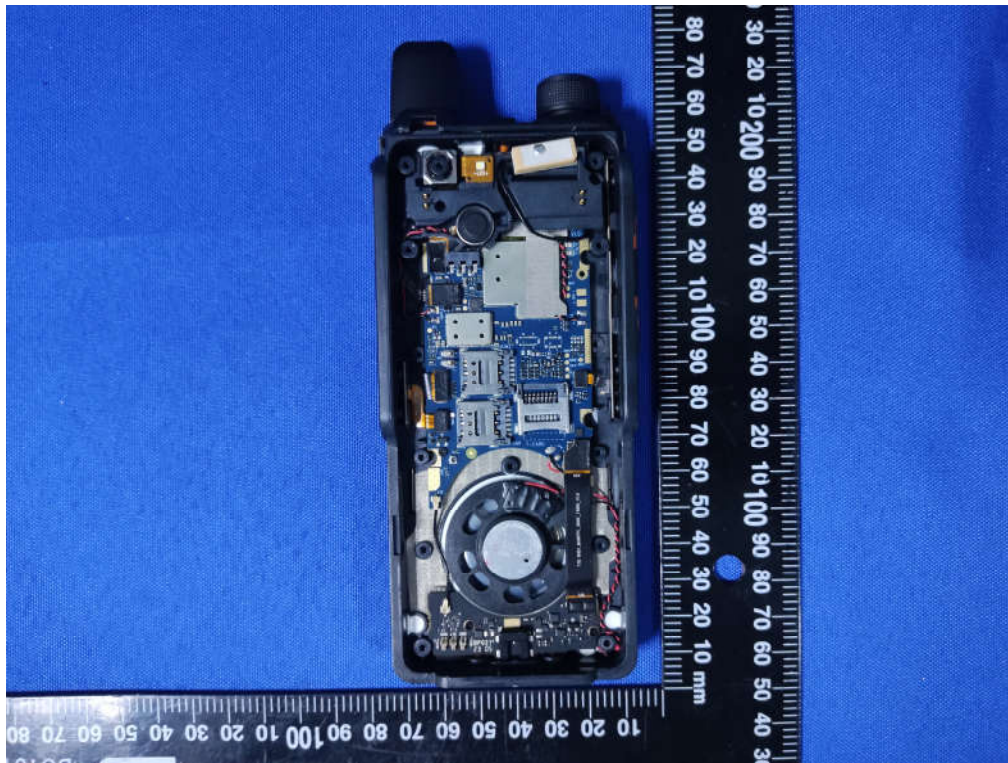


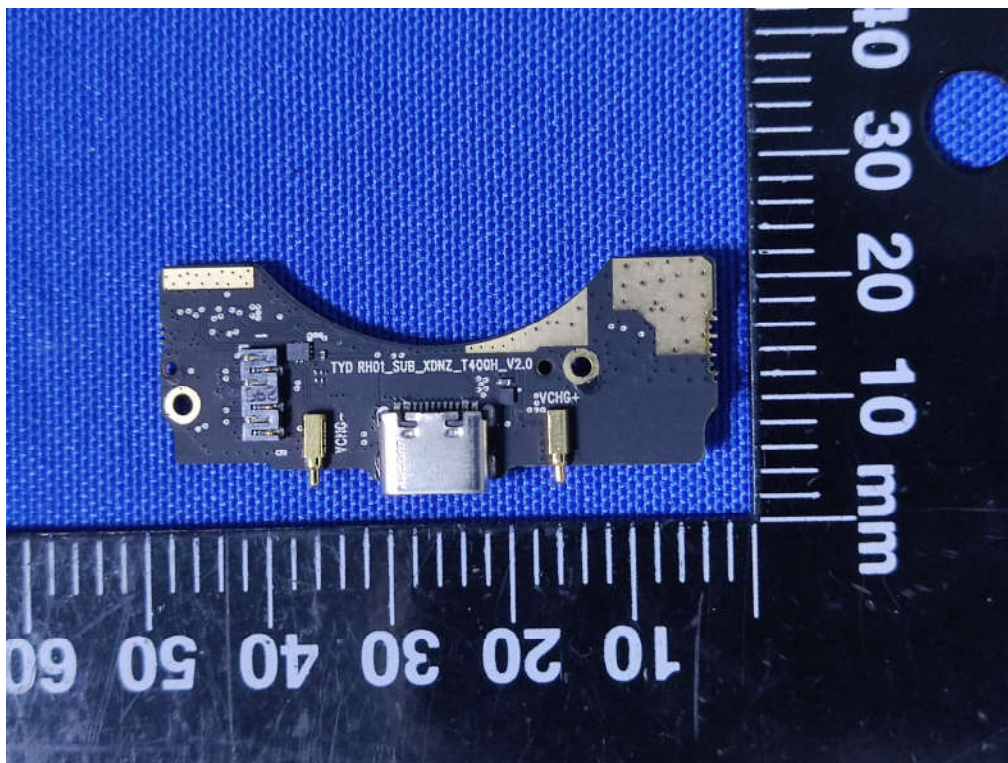
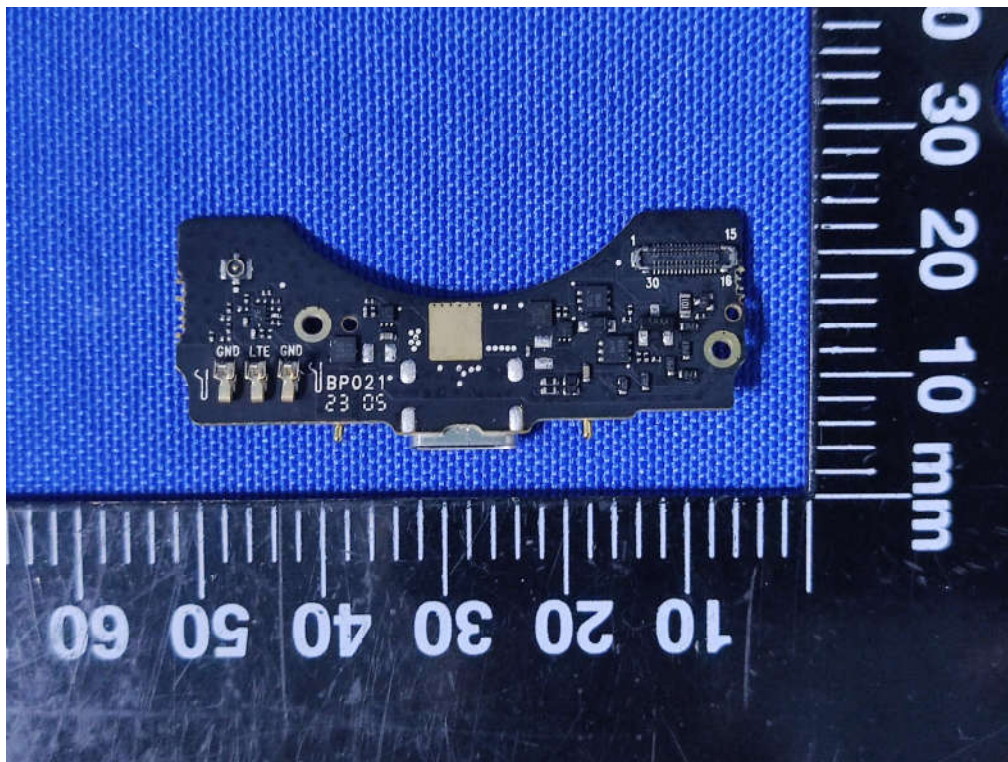




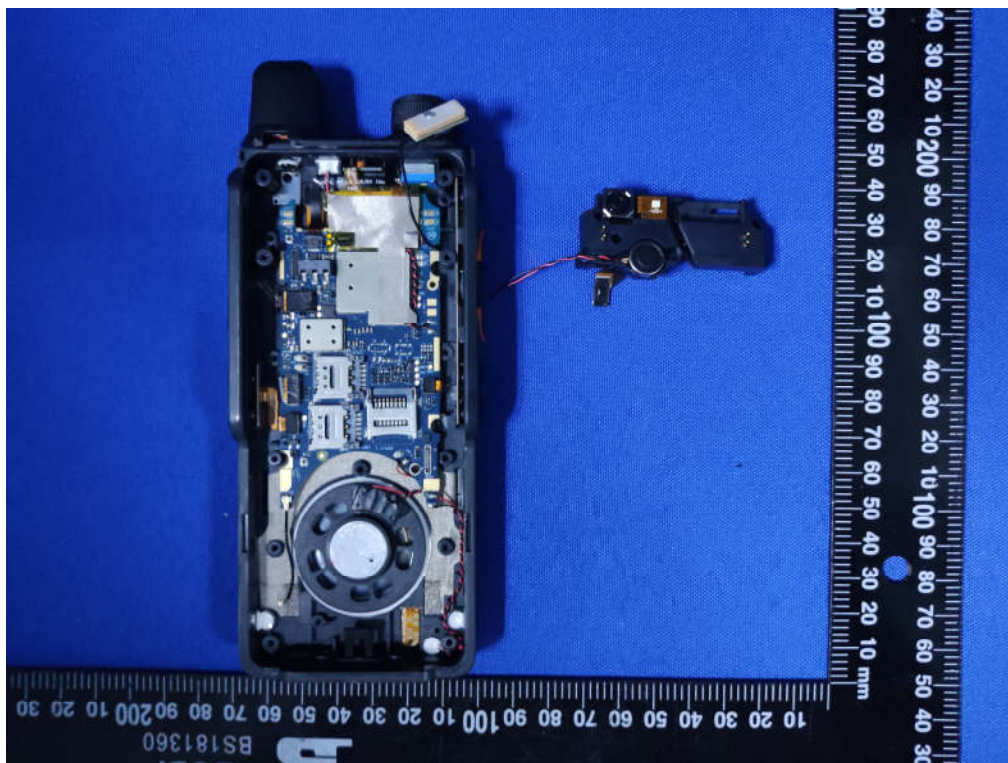
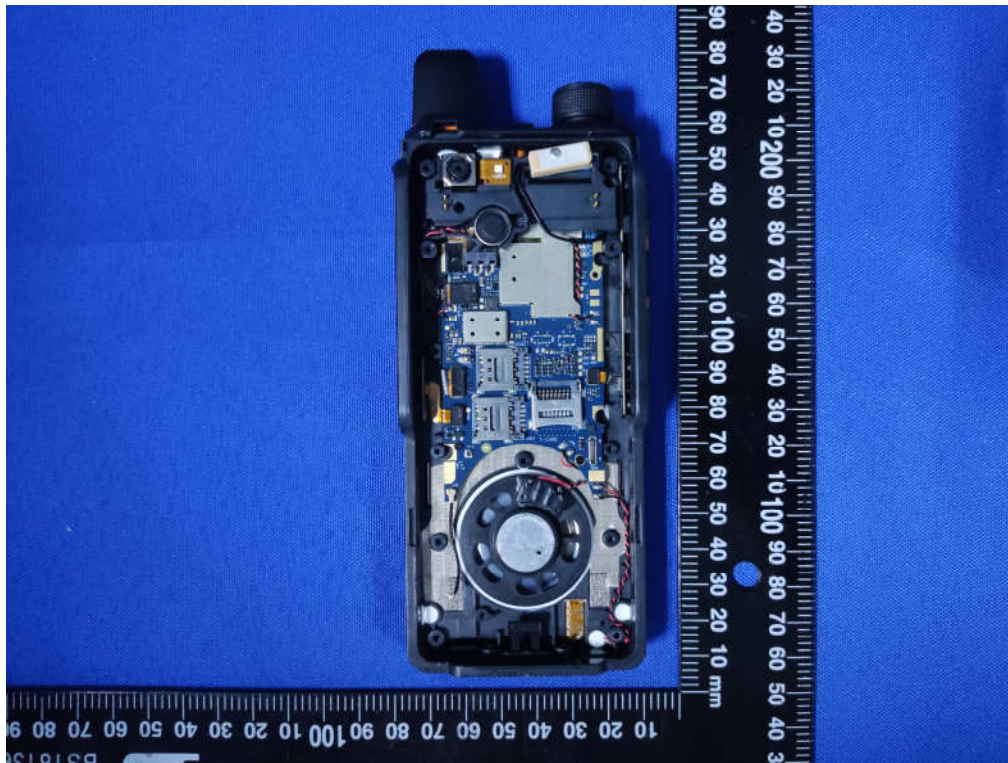


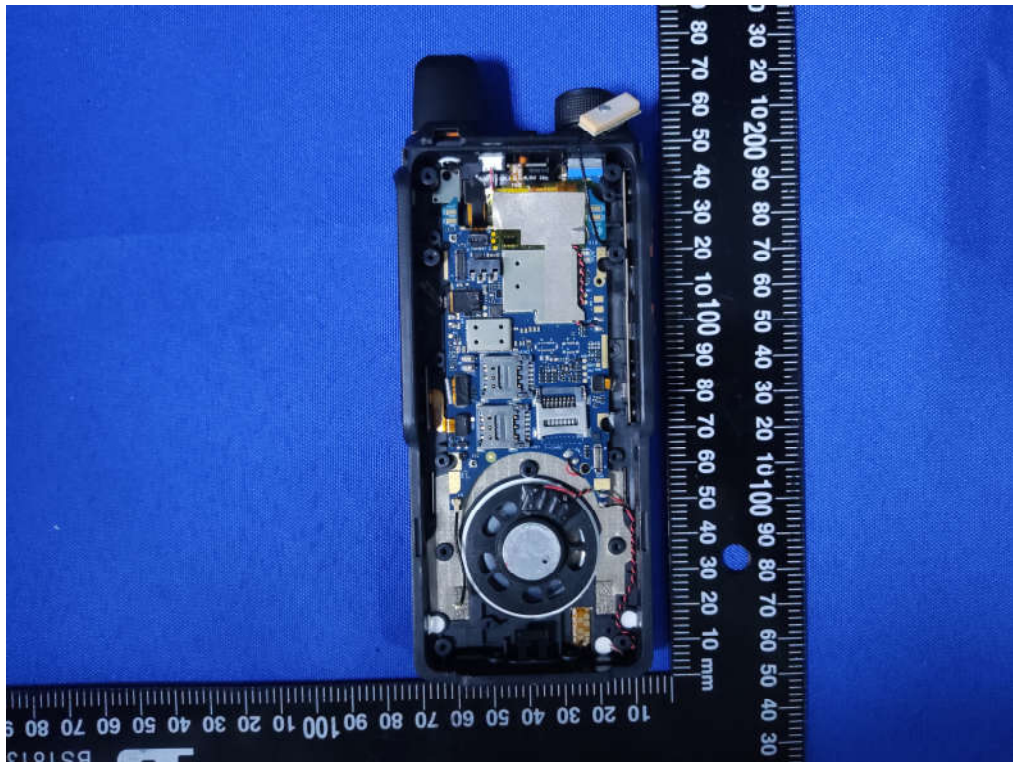
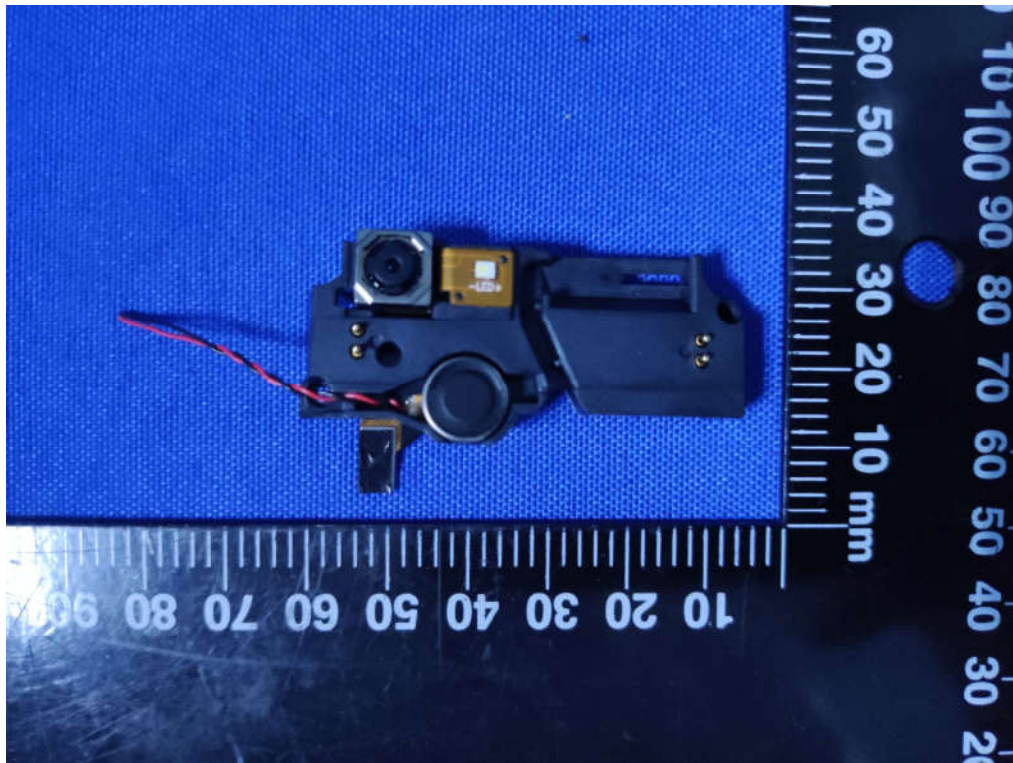


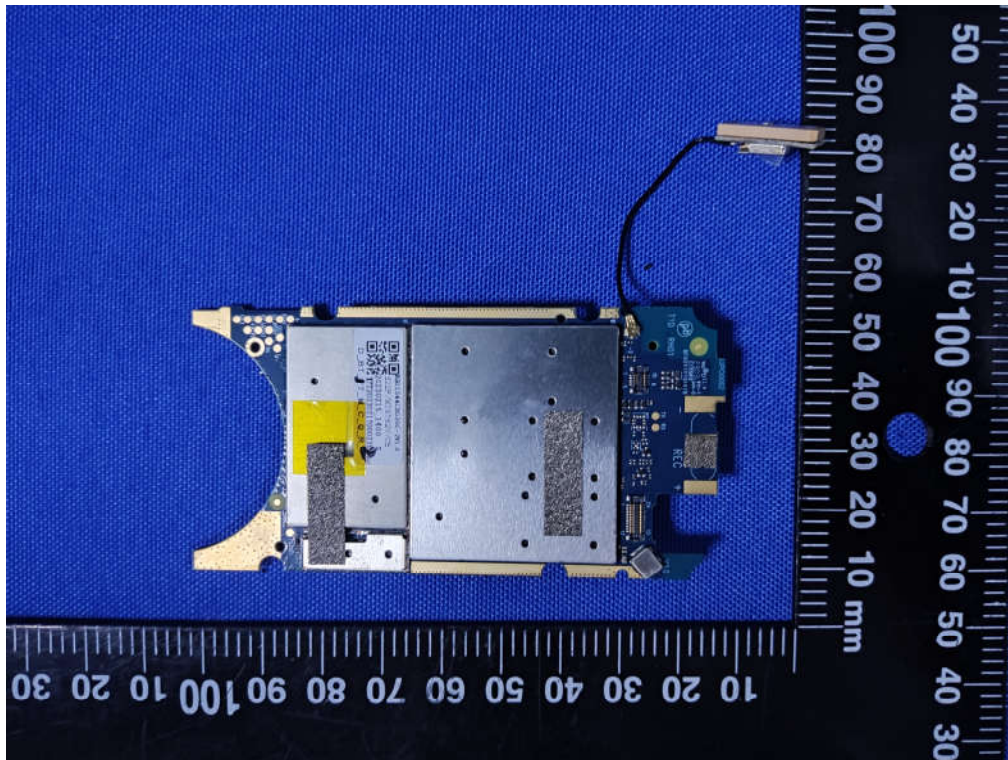
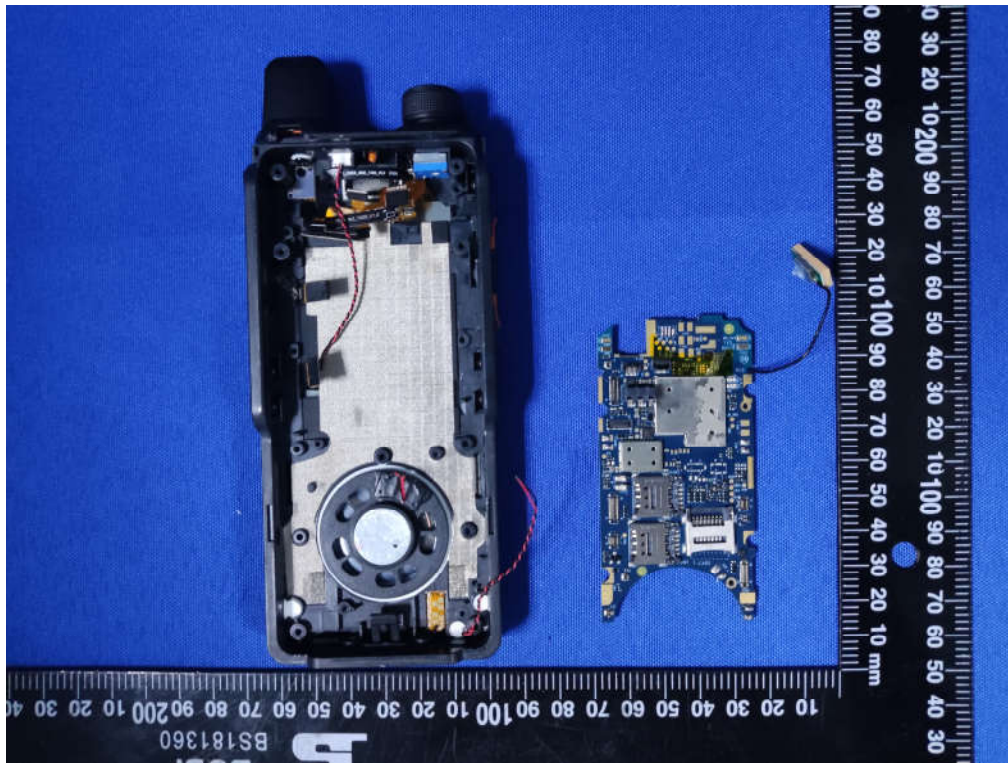


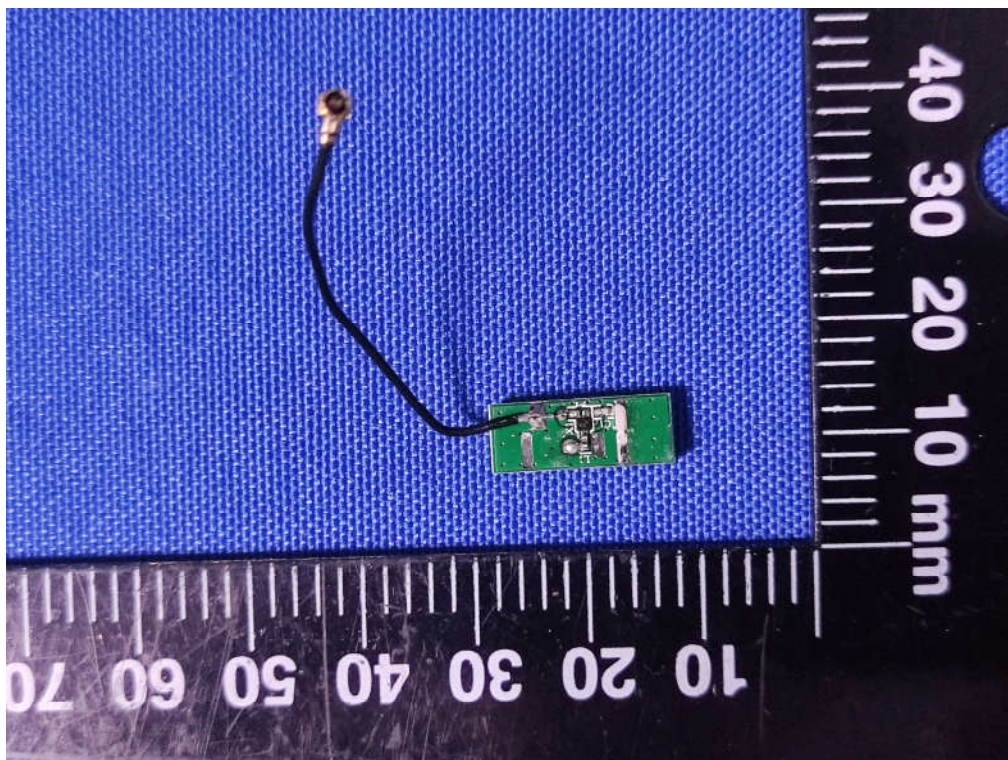
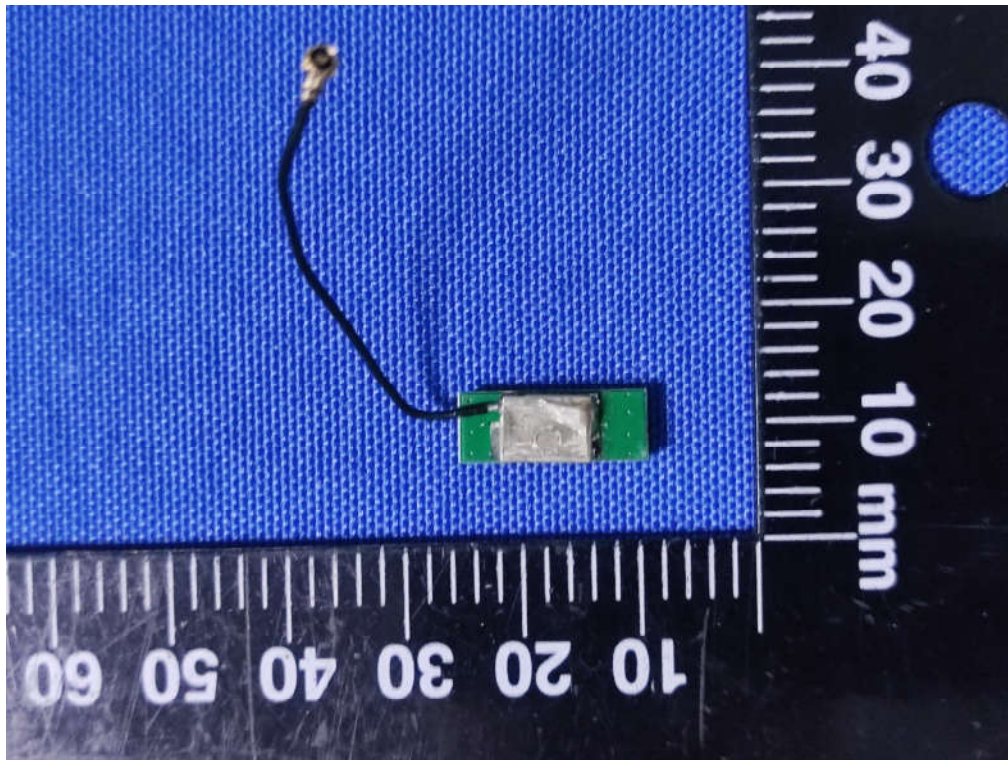


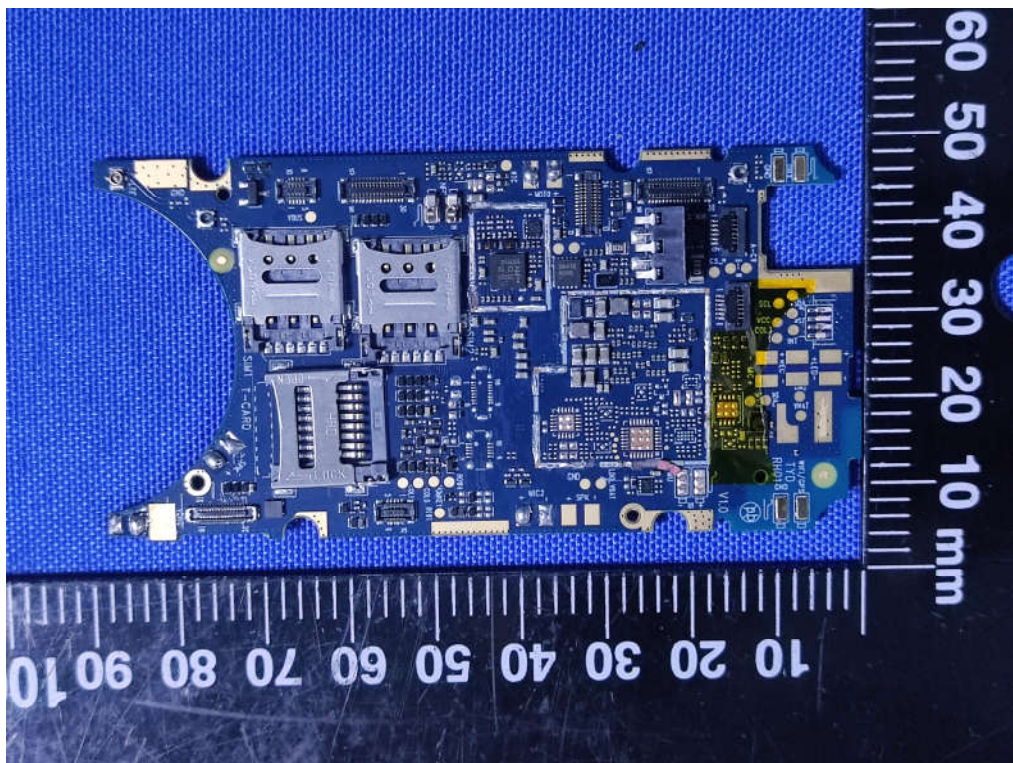
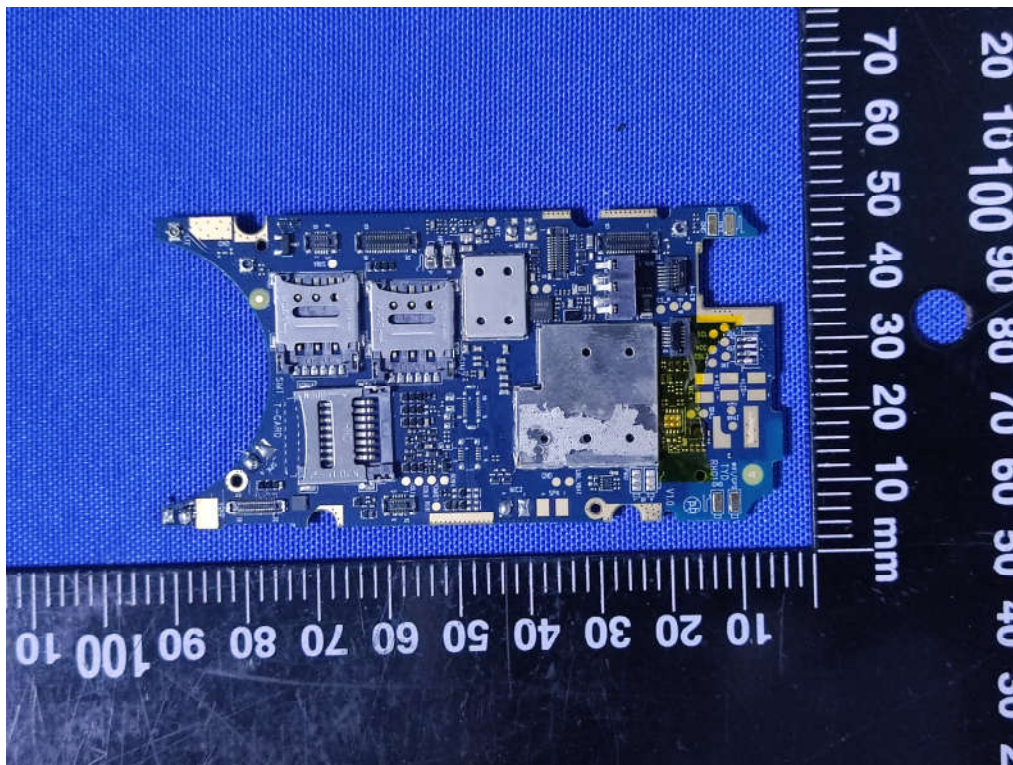


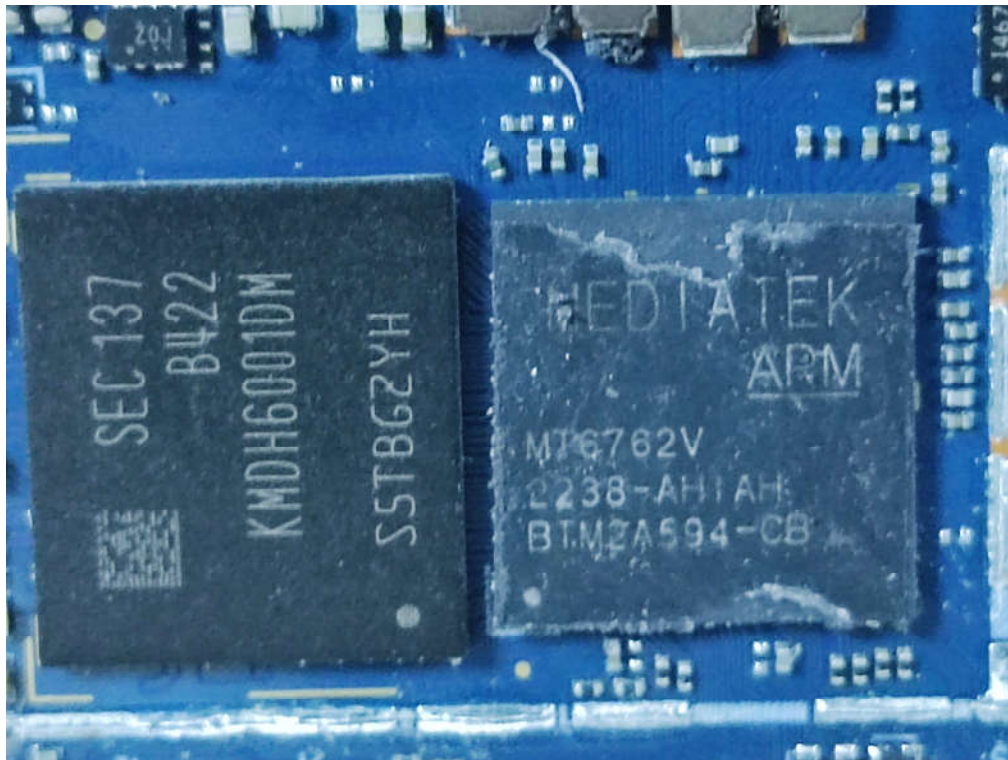
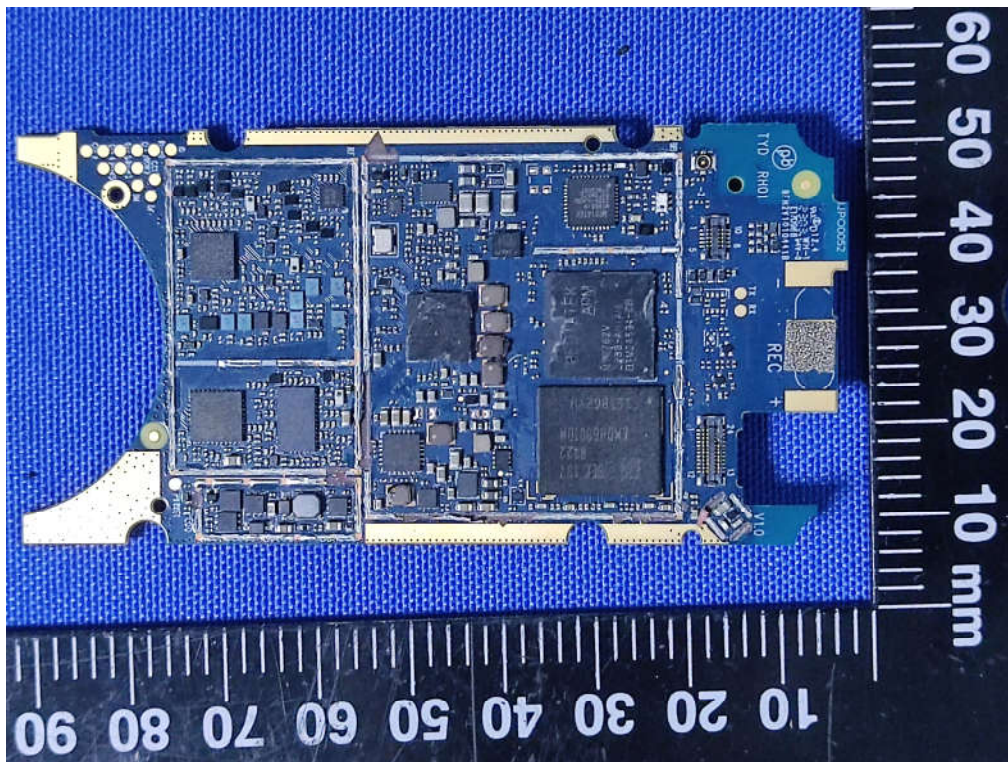


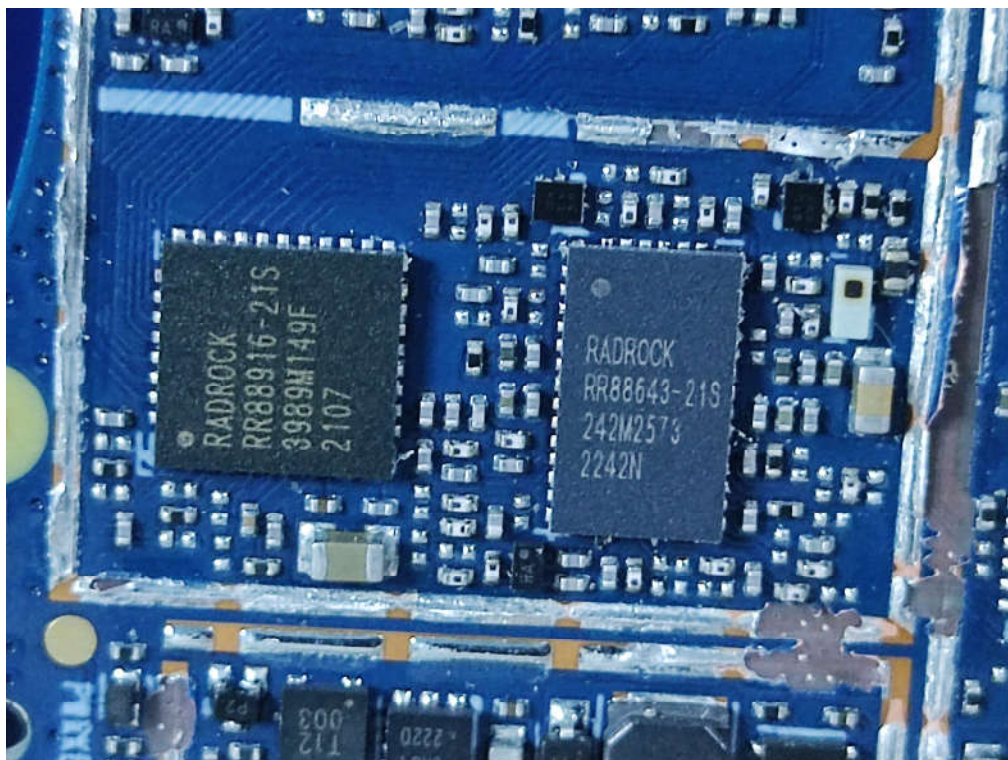
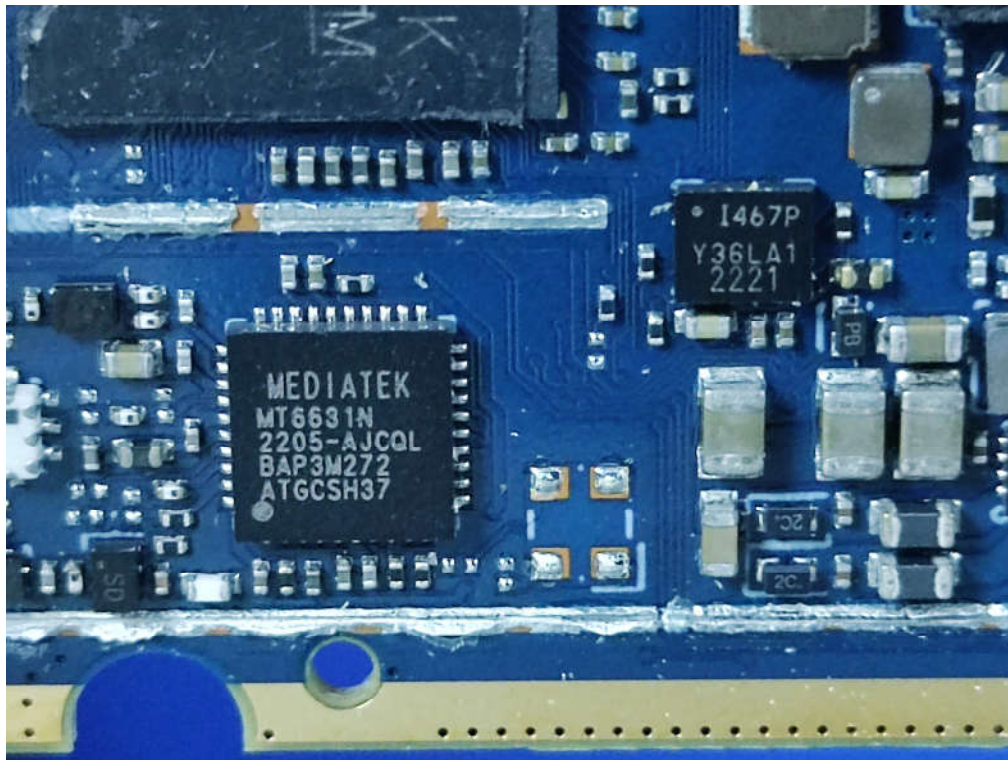


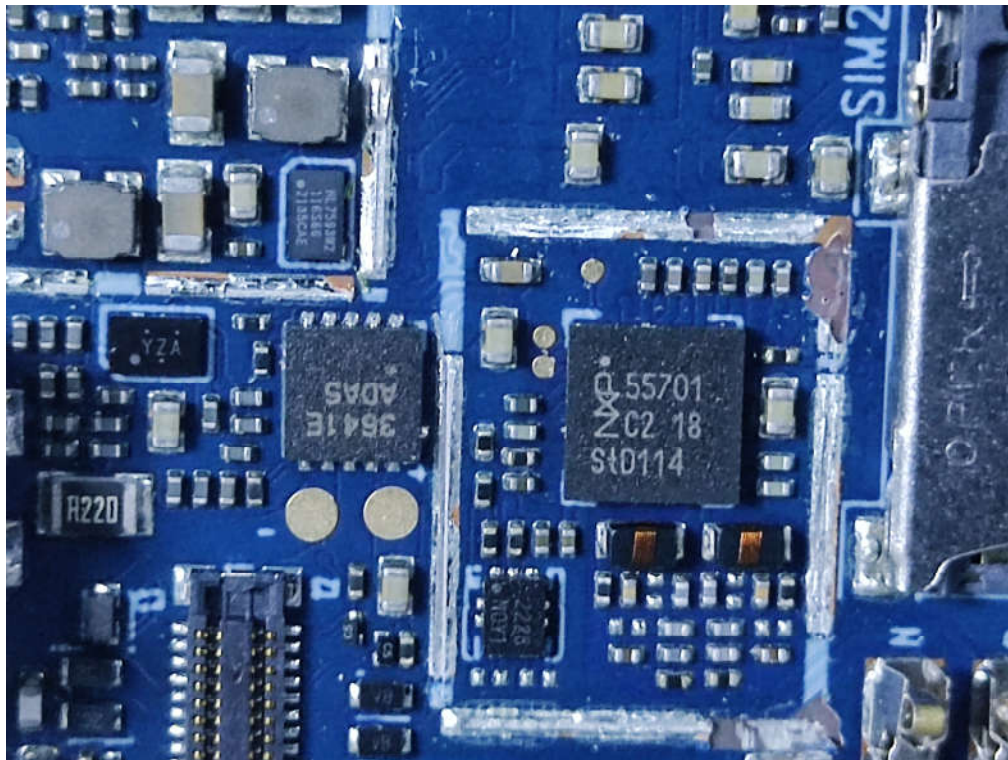
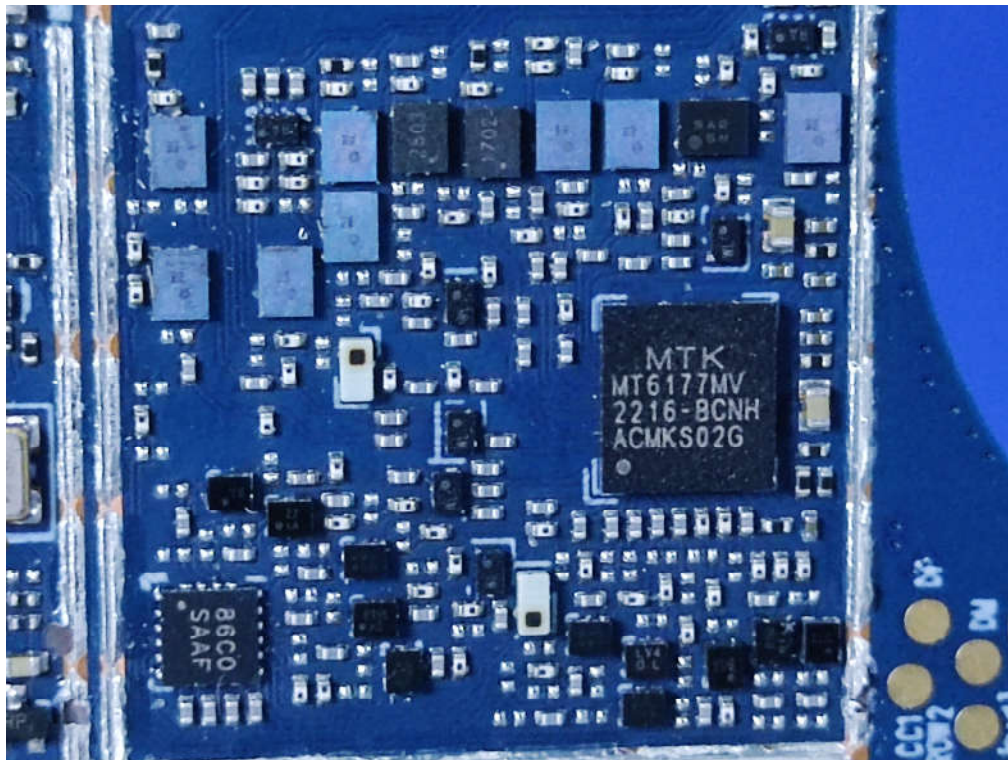




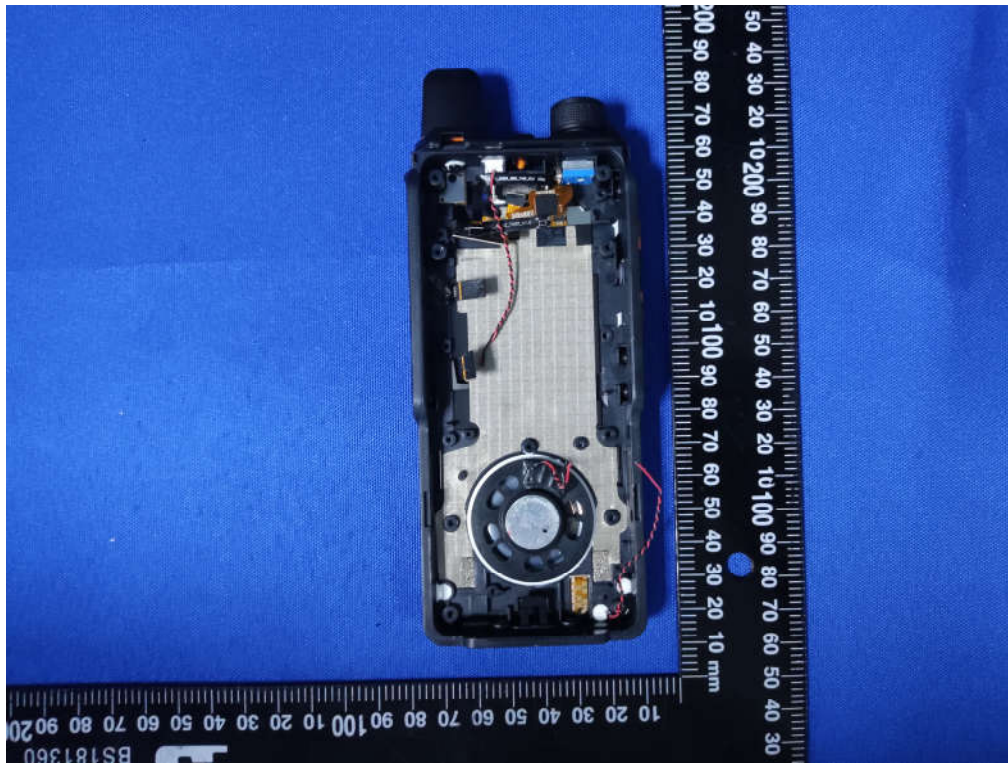






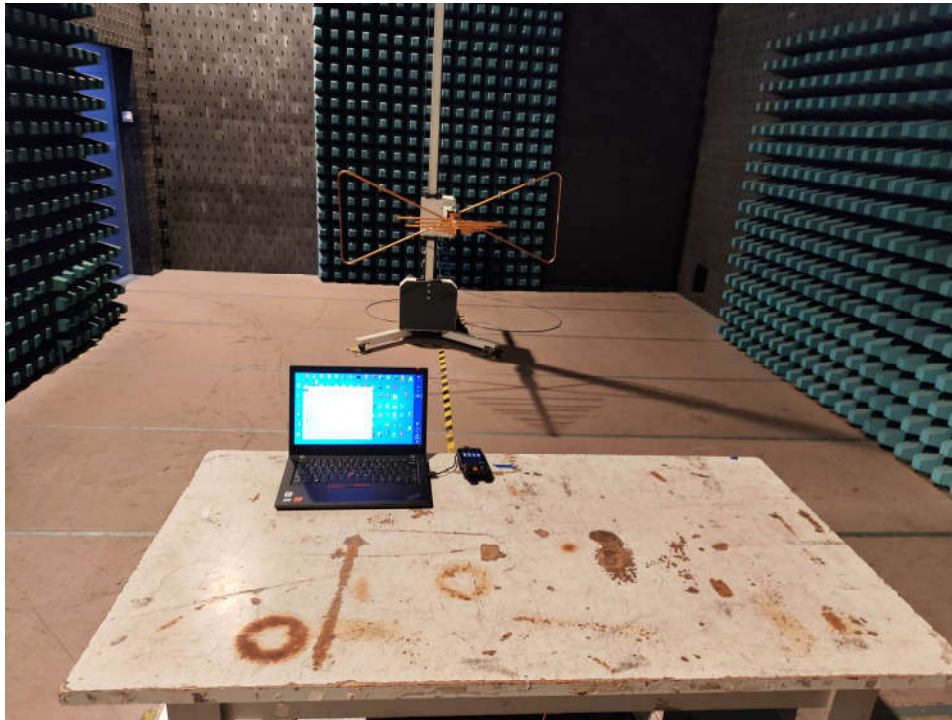






## Appendix II: Photographs of EMC Test Configuration

### 1. Radiated Emission Measurement below 1GHz



### 2. Radiated Emission Measurement above 1GHz



### 3. Conducted emission at AC mains input/output port Measurement



-----End of Report-----