

Test Laboratory: Huatongwei International Inspection Co., Ltd., SAR Lab

Date: 8/30/2024

**LTE Band 5 Body-worn&Hotspot**

Communication System: UID 0, Generic LTE-FDD (0); Frequency: 836.5 MHz; Duty Cycle: 1:1

Medium parameters used (interpolated):  $f = 836.5$  MHz;  $\sigma = 0.902$  S/m;  $\epsilon_r = 42.298$ ;  $\rho = 1000$  kg/m<sup>3</sup>

Phantom section: Flat Section

Ambient Temperature: 23.4°C; Liquid Temperature: 22.5°C

DASY Configuration:

- Probe: EX3DV4 - SN7494; ConvF(10.38, 10.38, 10.38) @ 836.5 MHz; Calibrated: 6/7/2024
- Sensor-Surface: 1.4mm (Mechanical Surface Detection)
- Electronics: DAE4 Sn1549; Calibrated: 4/16/2024
- Phantom: ELI V8.0 ; Type: QD OVA 004 AA ; Serial: 2078
- DASY52 52.10.2(1495); SEMCAD X 14.6.12(7450)

**Back 10mm/CH20525/Area Scan (7x11x1):** Measurement grid: dx=15mm, dy=15mm[Info: Interpolated medium parameters used for SAR evaluation.](#)

Maximum value of SAR (measured) = 0.519 W/kg

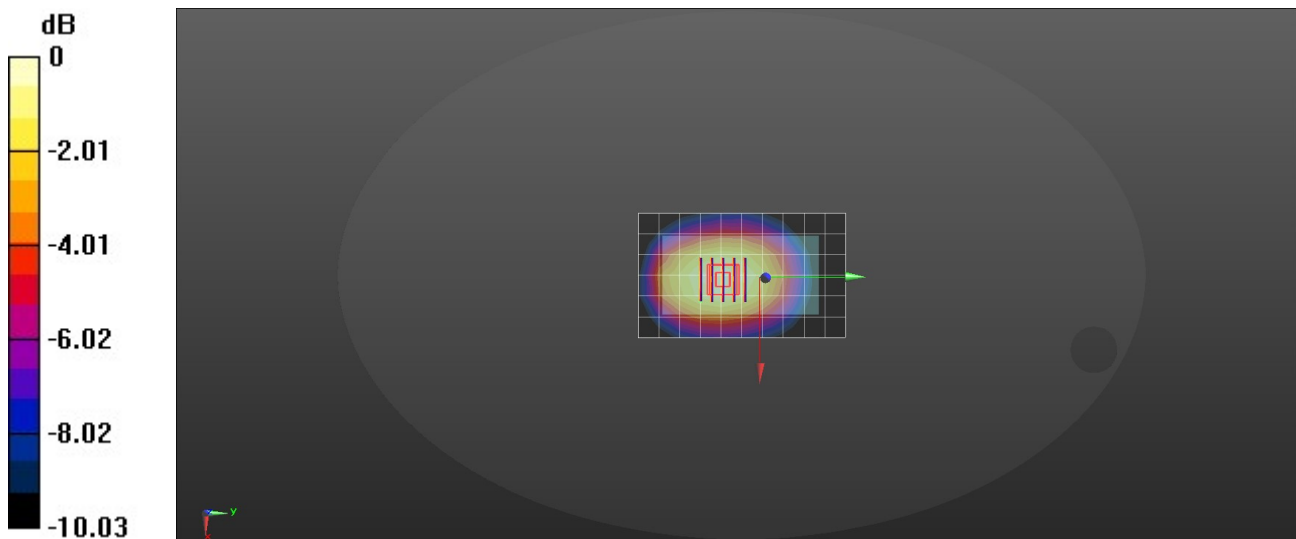
**Back 10mm/CH20525/Zoom Scan (5x5x7)/Cube 0:** Measurement grid: dx=8mm, dy=8mm, dz=5mm

Reference Value = 23.58 V/m; Power Drift = -0.03 dB

Peak SAR (extrapolated) = 0.629 W/kg

**SAR(1 g) = 0.403 W/kg; SAR(10 g) = 0.285 W/kg**[Info: Interpolated medium parameters used for SAR evaluation.](#)

Maximum value of SAR (measured) = 0.536 W/kg



0 dB = 0.536 W/kg = -2.71 dBW/kg

Test Laboratory: Huatongwei International Inspection Co., Ltd., SAR Lab

Date: 9/4/2024

**LTE Band 7 Body-worn&Hotspot**

Communication System: UID 0, Generic LTE-FDD (0); Frequency: 2510 MHz; Duty Cycle: 1:1  
 Medium parameters used:  $f = 2510$  MHz;  $\sigma = 1.86$  S/m;  $\epsilon_r = 39.132$ ;  $\rho = 1000$  kg/m<sup>3</sup>

Phantom section: Flat Section

Ambient Temperature: 23.4°C; Liquid Temperature: 22.2°C

DASY Configuration:

- Probe: EX3DV4 - SN7494; ConvF(8.13, 8.13, 8.13) @ 2510 MHz; Calibrated: 6/7/2024
- Sensor-Surface: 1.4mm (Mechanical Surface Detection)
- Electronics: DAE4 Sn1549; Calibrated: 4/16/2024
- Phantom: ELI V8.0 ; Type: QD OVA 004 AA ; Serial: 2078
- DASY52 52.10.2(1495); SEMCAD X 14.6.12(7450)

**Back 10mm/CH20850/Area Scan (8x13x1):** Measurement grid: dx=12mm, dy=12mm  
 Maximum value of SAR (measured) = 0.873 W/kg

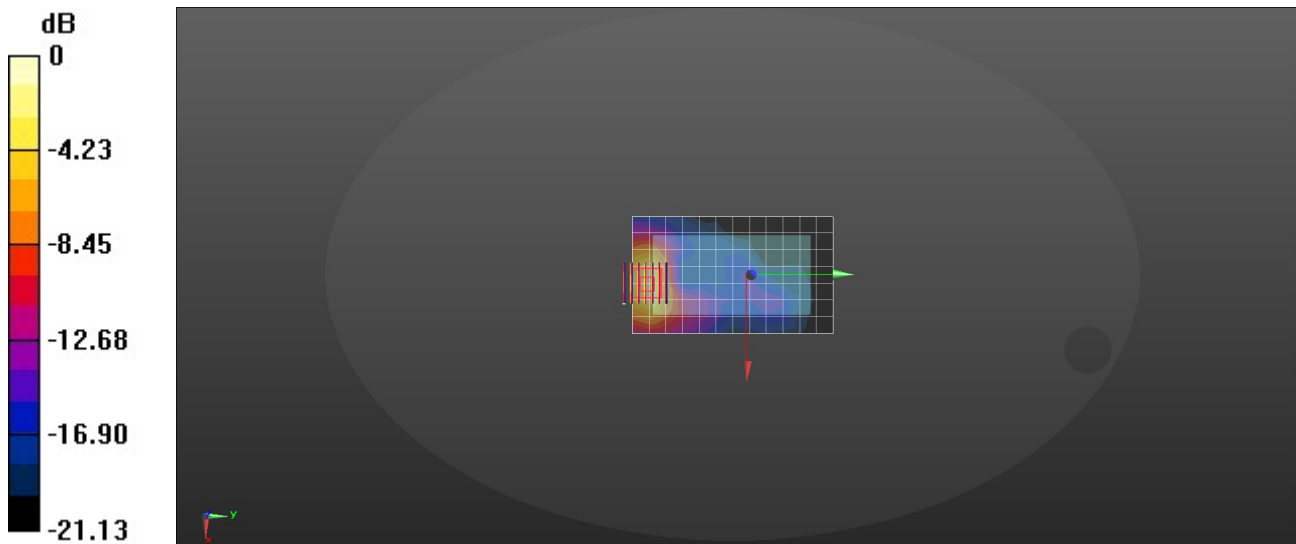
**Back 10mm/CH208500/Zoom Scan (7x7x7)/Cube 0:** Measurement grid: dx=5mm, dy=5mm, dz=5mm

Reference Value = 6.279 V/m; Power Drift = -0.01 dB

Peak SAR (extrapolated) = 1.22 W/kg

**SAR(1 g) = 0.671 W/kg; SAR(10 g) = 0.435 W/kg**

Maximum value of SAR (measured) = 0.869 W/kg



0 dB = 0.869 W/kg = 0.830 dBW/kg

Test Laboratory: Huatongwei International Inspection Co., Ltd., SAR Lab

Date: 8/29/2024

**LTE Band 12 Body-worn&Hotspot**

Communication System: UID 0, Generic LTE-FDD (0); Frequency: 707.5 MHz; Duty Cycle: 1:1

Medium parameters used (interpolated):  $f = 707.5$  MHz;  $\sigma = 0.898$  S/m;  $\epsilon_r = 42.778$ ;  $\rho = 1000$  kg/m<sup>3</sup>

Phantom section: Flat Section

Ambient Temperature: 23.5°C; Liquid Temperature: 22.6°C

DASY Configuration:

- Probe: EX3DV4 - SN7494; ConvF(10.74, 10.74, 10.74) @ 707.5 MHz; Calibrated: 6/7/2024
- Sensor-Surface: 1.4mm (Mechanical Surface Detection)
- Electronics: DAE4 Sn1549; Calibrated: 4/16/2024
- Phantom: ELI V8.0 ; Type: QD OVA 004 AA ; Serial: 2078
- DASY52 52.10.2(1495); SEMCAD X 14.6.12(7450)

**Back 10mm/CH23095/Area Scan (7x11x1):** Measurement grid: dx=15mm, dy=15mm[Info: Interpolated medium parameters used for SAR evaluation.](#)

Maximum value of SAR (measured) = 0.0411 W/kg

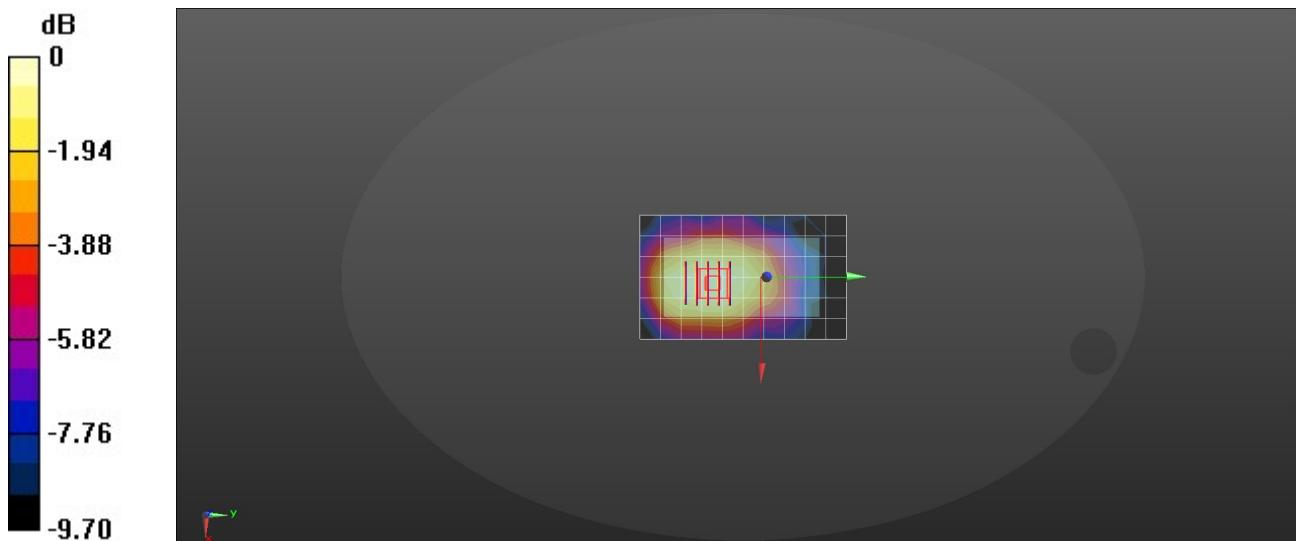
**Back 10mm/CH23095/Zoom Scan (5x5x7)/Cube 0:** Measurement grid: dx=8mm, dy=8mm, dz=5mm

Reference Value = 6.224 V/m; Power Drift = -0.11 dB

Peak SAR (extrapolated) = 0.0480 W/kg

**SAR(1 g) = 0.031 W/kg; SAR(10 g) = 0.023 W/kg**[Info: Interpolated medium parameters used for SAR evaluation.](#)

Maximum value of SAR (measured) = 0.0407 W/kg



0 dB = 0.0407 W/kg = -13.90 dBW/kg

### LTE Band 13 Body-worn&Hotspot

Communication System: UID 0, Generic LTE-FDD (0); Frequency: 782 MHz; Duty Cycle: 1:1

Medium parameters used (interpolated):  $f = 782$  MHz;  $\sigma = 0.881$  S/m;  $\epsilon_r = 42.519$ ;  $\rho = 1000$  kg/m<sup>3</sup>

Phantom section: Flat Section

Ambient Temperature: 23.5°C; Liquid Temperature: 22.6°C

DASY Configuration:

- Probe: EX3DV4 - SN7494; ConvF(10.74, 10.74, 10.74) @ 782 MHz; Calibrated: 6/7/2024
- Sensor-Surface: 1.4mm (Mechanical Surface Detection)
- Electronics: DAE4 Sn1549; Calibrated: 4/16/2024
- Phantom: ELI V8.0 ; Type: QD OVA 004 AA ; Serial: 2078
- DASY52 52.10.2(1495); SEMCAD X 14.6.12(7450)

**Back 10mm/CH23230/Area Scan (7x11x1):** Measurement grid: dx=15mm, dy=15mm

[Info: Interpolated medium parameters used for SAR evaluation.](#)

Maximum value of SAR (measured) = 0.188 W/kg

**Back 10mm/CH23230/Zoom Scan (5x5x7)/Cube 0:** Measurement grid: dx=8mm, dy=8mm, dz=5mm

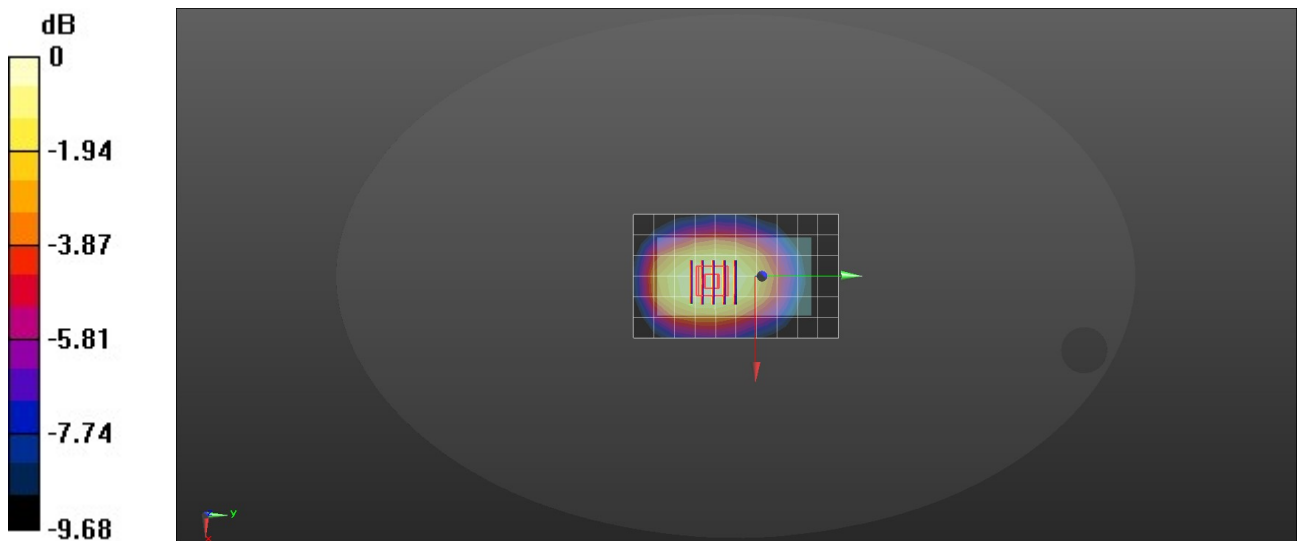
Reference Value = 14.25 V/m; Power Drift = -0.02 dB

Peak SAR (extrapolated) = 0.228 W/kg

**SAR(1 g) = 0.147 W/kg; SAR(10 g) = 0.105 W/kg**

[Info: Interpolated medium parameters used for SAR evaluation.](#)

Maximum value of SAR (measured) = 0.194 W/kg



0 dB = 0.194 W/kg = -7.12 dBW/kg

**LTE Band 17 Body-worn&Hotspot**

Communication System: UID 0, Generic LTE-FDD (0); Frequency: 710 MHz; Duty Cycle: 1:1

Medium parameters used:  $f = 710$  MHz;  $\sigma = 0.899$  S/m;  $\epsilon_r = 42.77$ ;  $\rho = 1000$  kg/m<sup>3</sup>

Phantom section: Flat Section

Ambient Temperature: 23.5°C; Liquid Temperature: 22.6°C

DASY Configuration:

- Probe: EX3DV4 - SN7494; ConvF(10.74, 10.74, 10.74) @ 710 MHz; Calibrated: 6/7/2024
- Sensor-Surface: 1.4mm (Mechanical Surface Detection)
- Electronics: DAE4 Sn1549; Calibrated: 4/16/2024
- Phantom: ELI V8.0 ; Type: QD OVA 004 AA ; Serial: 2078
- DASY52 52.10.2(1495); SEMCAD X 14.6.12(7450)

**Back 10mm/CH23790/Area Scan (7x11x1):** Measurement grid: dx=15mm, dy=15mm

Maximum value of SAR (measured) = 0.0429 W/kg

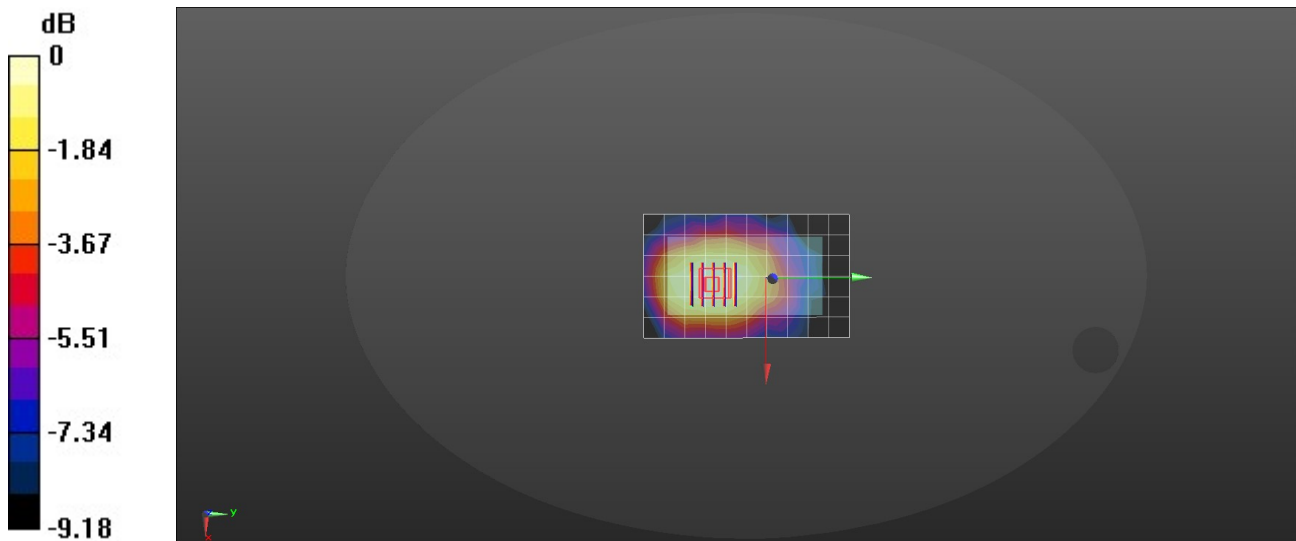
**Back 10mm/CH23790/Zoom Scan (5x5x7)/Cube 0:** Measurement grid: dx=8mm, dy=8mm, dz=5mm

Reference Value = 6.370 V/m; Power Drift = -0.13 dB

Peak SAR (extrapolated) = 0.0500 W/kg

**SAR(1 g) = 0.032 W/kg; SAR(10 g) = 0.024 W/kg**

Maximum value of SAR (measured) = 0.0423 W/kg



0 dB = 0.0423 W/kg = -13.74 dBW/kg

### LTE Band 66 Body-worn&Hotspot

Communication System: UID 0, Generic LTE-FDD (0); Frequency: 1745 MHz; Duty Cycle: 1:1  
 Medium parameters used (interpolated):  $f = 1745$  MHz;  $\sigma = 1.361$  S/m;  $\epsilon_r = 40.269$ ;  $\rho = 1000$  kg/m<sup>3</sup>

Phantom section: Flat Section

Ambient Temperature: 23.3°C; Liquid Temperature: 22.1°C

DASY Configuration:

- Probe: EX3DV4 - SN7494; ConvF(8.94, 8.94, 8.94) @ 1745 MHz; Calibrated: 6/7/2024
- Sensor-Surface: 1.4mm (Mechanical Surface Detection)
- Electronics: DAE4 Sn1549; Calibrated: 4/16/2024
- Phantom: ELI V8.0 ; Type: QD OVA 004 AA ; Serial: 2078
- DASY52 52.10.2(1495); SEMCAD X 14.6.12(7450)

**Back 10mm/CH132322/Area Scan (7x11x1):** Measurement grid: dx=15mm, dy=15mm

[Info: Interpolated medium parameters used for SAR evaluation.](#)

Maximum value of SAR (measured) = 1.10 W/kg

**Back 10mm/CH132322/Zoom Scan (5x5x7)/Cube 0:** Measurement grid: dx=8mm, dy=8mm, dz=5mm

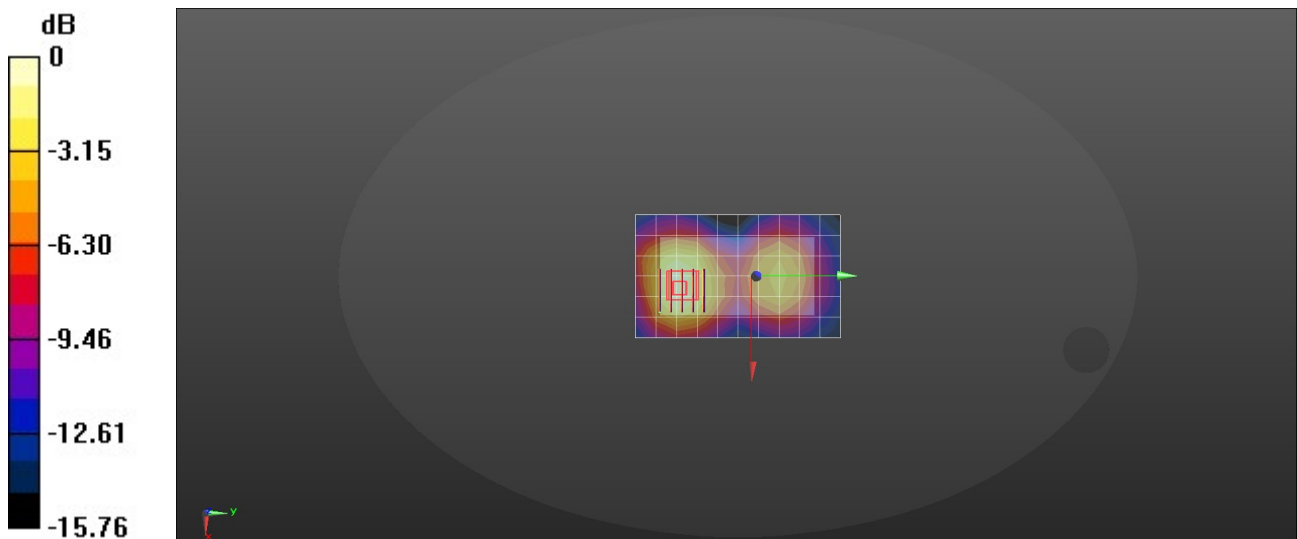
Reference Value = 12.09 V/m; Power Drift = 0.09 dB

Peak SAR (extrapolated) = 1.37 W/kg

**SAR(1 g) = 0.799 W/kg; SAR(10 g) = 0.493 W/kg**

[Info: Interpolated medium parameters used for SAR evaluation.](#)

Maximum value of SAR (measured) = 1.14 W/kg



0 dB = 1.14 W/kg = 0.57 dBW/kg

### WIFI 2.4G Body-worn&Hotspot

Communication System: UID 0, Generic WIFI (0); Frequency: 2462 MHz; Duty Cycle: 1:1

Medium parameters used (interpolated):  $f = 2462$  MHz;  $\sigma = 1.786$  S/m;  $\epsilon_r = 39.207$ ;  $\rho = 1000$  kg/m<sup>3</sup>

Phantom section: Flat Section

Ambient Temperature: 23.4°C; Liquid Temperature: 22.2°C

DASY Configuration:

- Probe: EX3DV4 - SN7494; ConvF(8.13, 8.13, 8.13) @ 2462 MHz; Calibrated: 6/7/2024
- Sensor-Surface: 1.4mm (Mechanical Surface Detection)
- Electronics: DAE4 Sn1549; Calibrated: 4/16/2024
- Phantom: ELI V8.0 ; Type: QD OVA 004 AA ; Serial: 2078
- DASY52 52.10.2(1495); SEMCAD X 14.6.12(7450)

**Back 10mm/CH11/Area Scan (8x13x1):** Measurement grid: dx=12mm, dy=12mm

[Info: Interpolated medium parameters used for SAR evaluation.](#)

Maximum value of SAR (measured) = 0.287 W/kg

**Back 10mm/CH11/Zoom Scan (7x7x7)/Cube 0:** Measurement grid: dx=5mm, dy=5mm, dz=5mm

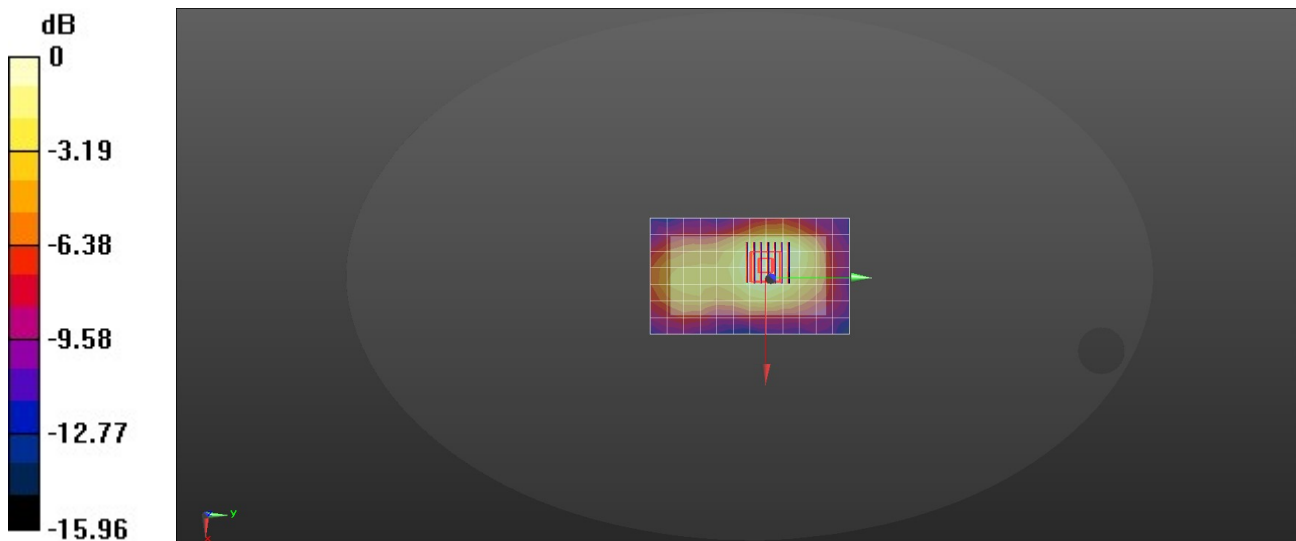
Reference Value = 11.67 V/m; Power Drift = -0.12 dB

Peak SAR (extrapolated) = 0.350 W/kg

**SAR(1 g) = 0.186 W/kg; SAR(10 g) = 0.109 W/kg**

[Info: Interpolated medium parameters used for SAR evaluation.](#)

Maximum value of SAR (measured) = 0.283 W/kg



0 dB = 0.283 W/kg = -5.48 dBW/kg

**WIFI 5G Band 1 Body-worn&Hotspot**

Communication System: UID 0, Generic WIFI (0); Frequency: 5180 MHz; Duty Cycle: 1:1

Medium parameters used:  $f = 5180$  MHz;  $\sigma = 4.679$  S/m;  $\epsilon_r = 34.961$ ;  $\rho = 1000$  kg/m<sup>3</sup>

Phantom section: Flat Section

Ambient Temperature: 23.1°C; Liquid Temperature: 22.3°C

DASY Configuration:

- Probe: EX3DV4 - SN7494; ConvF(5.7, 5.7, 5.7) @ 5180 MHz; Calibrated: 6/7/2024
- Sensor-Surface: 1.4mm (Mechanical Surface Detection)
- Electronics: DAE4 Sn1549; Calibrated: 4/16/2024
- Phantom: ELI V8.0 ; Type: QD OVA 004 AA ; Serial: 2078
- DASY52 52.10.2(1495); SEMCAD X 14.6.12(7450)

**Back 10mm/CH36/Area Scan (10x15x1):** Measurement grid: dx=10mm, dy=10mm

Maximum value of SAR (measured) = 0.161 W/kg

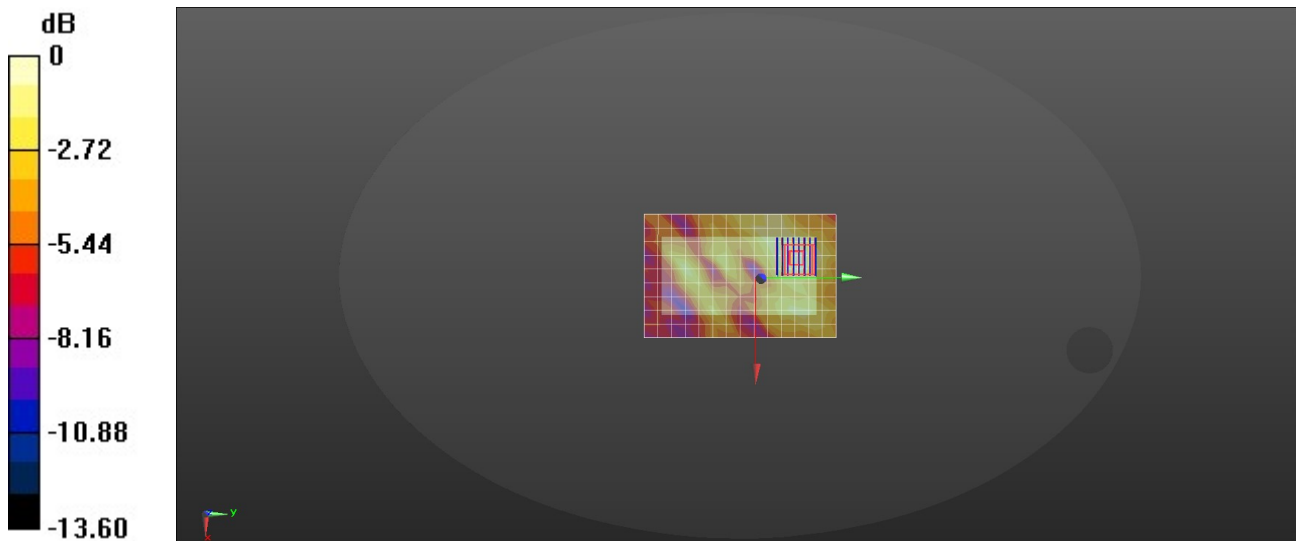
**Back 10mm/CH36/Zoom Scan (8x8x7)/Cube 0:** Measurement grid: dx=4mm, dy=4mm, dz=1.4mm

Reference Value = 3.787 V/m; Power Drift = -0.10 dB

Peak SAR (extrapolated) = 0.248 W/kg

**SAR(1 g) = 0.075 W/kg; SAR(10 g) = 0.038 W/kg**

Maximum value of SAR (measured) = 0.145 W/kg





**WIFI 5G Band 2A Body-worn&Hotspot**

Communication System: UID 0, Generic WIFI (0); Frequency: 5280 MHz; Duty Cycle: 1:1

Medium parameters used:  $f = 5280$  MHz;  $\sigma = 4.79$  S/m;  $\epsilon_r = 34.79$ ;  $\rho = 1000$  kg/m<sup>3</sup>

Phantom section: Flat Section

Ambient Temperature: 23.1°C; Liquid Temperature: 22.3°C

DASY Configuration:

- Probe: EX3DV4 - SN7494; ConvF(5.7, 5.7, 5.7) @ 5280 MHz; Calibrated: 6/7/2024
- Sensor-Surface: 1.4mm (Mechanical Surface Detection)
- Electronics: DAE4 Sn1549; Calibrated: 4/16/2024
- Phantom: ELI V8.0 ; Type: QD OVA 004 AA ; Serial: 2078
- DASY52 52.10.2(1495); SEMCAD X 14.6.12(7450)

**Back 10mm/CH56/Area Scan (10x15x1):** Measurement grid: dx=10mm, dy=10mm

Maximum value of SAR (measured) = 0.171 W/kg

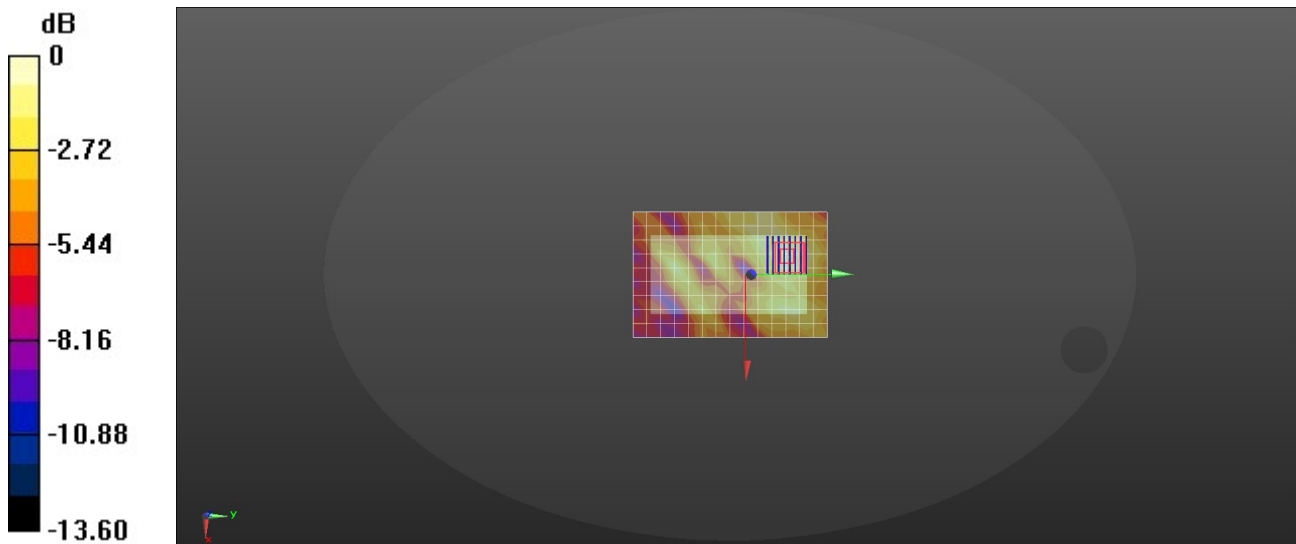
**Back 10mm/CH56/Zoom Scan (8x8x7)/Cube 0:** Measurement grid: dx=4mm, dy=4mm, dz=1.4mm

Reference Value = 3.850 V/m; Power Drift = -0.04 dB

Peak SAR (extrapolated) = 0.263 W/kg

**SAR(1 g) = 0.079 W/kg; SAR(10 g) = 0.040 W/kg**

Maximum value of SAR (measured) = 0.154 W/kg



0 dB = 0.154 W/kg = -8.12 dBW/kg

Test Laboratory: Huatongwei International Inspection Co., Ltd., SAR Lab

Date: 9/6/2024

**WIFI 5G Band 3 Body-worn&Hotspot**

Communication System: UID 0, Generic WIFI (0); Frequency: 5785 MHz; Duty Cycle: 1:1

Medium parameters used (interpolated):  $f = 5785$  MHz;  $\sigma = 5.375$  S/m;  $\epsilon_r = 34.01$ ;  $\rho = 1000$  kg/m<sup>3</sup>

Phantom section: Flat Section

Ambient Temperature: 23.6°C; Liquid Temperature: 22.5°C

DASY Configuration:

- Probe: EX3DV4 - SN7494; ConvF(5.19, 5.19, 5.19) @ 5785 MHz; Calibrated: 6/7/2024
- Sensor-Surface: 1.4mm (Mechanical Surface Detection)
- Electronics: DAE4 Sn1549; Calibrated: 4/16/2024
- Phantom: ELI V8.0 ; Type: QD OVA 004 AA ; Serial: 2078
- DASY52 52.10.2(1495); SEMCAD X 14.6.12(7450)

**Back 10mm/CH157/Area Scan (10x15x1):** Measurement grid: dx=10mm, dy=10mm[Info: Interpolated medium parameters used for SAR evaluation.](#)

Maximum value of SAR (measured) = 0.201 W/kg

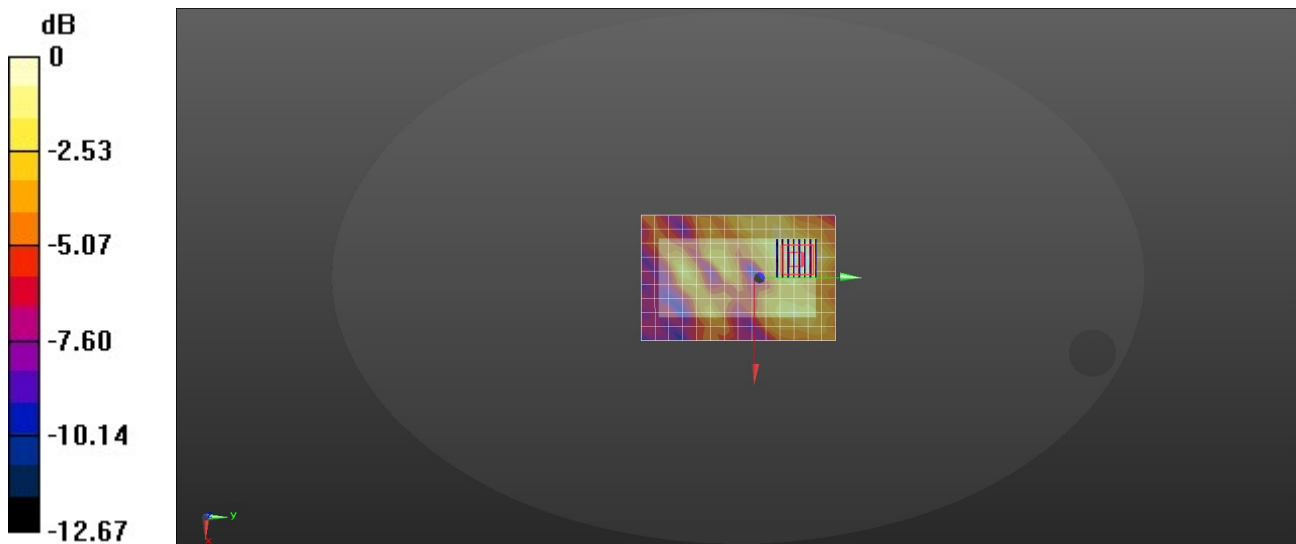
**Back 10mm/CH157/Zoom Scan (8x8x7)/Cube 0:** Measurement grid: dx=4mm, dy=4mm, dz=1.4mm

Reference Value = 3.559 V/m; Power Drift = -0.02 dB

Peak SAR (extrapolated) = 0.330 W/kg

**SAR(1 g) = 0.099 W/kg; SAR(10 g) = 0.049 W/kg**[Info: Interpolated medium parameters used for SAR evaluation.](#)

Maximum value of SAR (measured) = 0.195 W/kg



0 dB = 0.195 W/kg = -7.10 dBW/kg

## Bluetooth Body-worn&Hotspot

Communication System: UID 0, Generic BT (0); Frequency: 2440 MHz; Duty Cycle: 1:1

Medium parameters used:  $f = 2440$  MHz;  $\sigma = 1.747$  S/m;  $\epsilon_r = 39.243$ ;  $\rho = 1000$  kg/m<sup>3</sup>

Phantom section: Flat Section

Ambient Temperature: 23.4°C; Liquid Temperature: 22.2°C

DASY Configuration:

- Probe: EX3DV4 - SN7494; ConvF(8.13, 8.13, 8.13) @ 2440 MHz; Calibrated: 6/7/2024
- Sensor-Surface: 1.4mm (Mechanical Surface Detection)
- Electronics: DAE4 Sn1549; Calibrated: 4/16/2024
- Phantom: ELI V8.0 ; Type: QD OVA 004 AA ; Serial: 2078
- DASY52 52.10.2(1495); SEMCAD X 14.6.12(7450)

**Back 10mm/CH19/Area Scan (8x13x1):** Measurement grid: dx=12mm, dy=12mm

Maximum value of SAR (measured) = 0.0292 W/kg

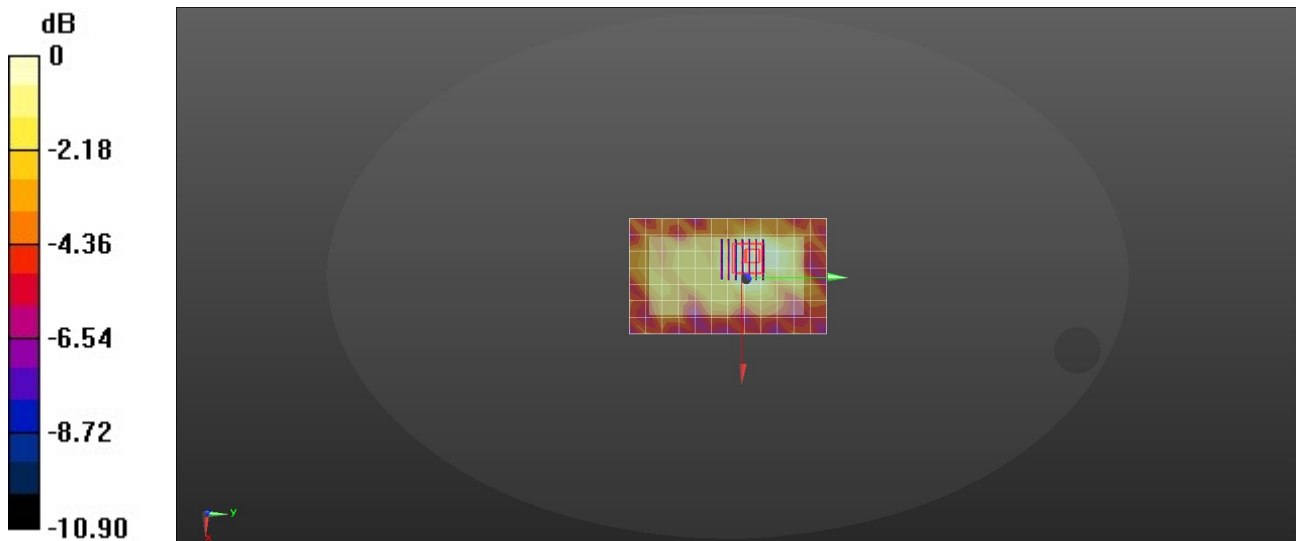
**Back 10mm/CH19/Zoom Scan (7x7x7)/Cube 0:** Measurement grid: dx=5mm, dy=5mm, dz=5mm

Reference Value = 3.370 V/m; Power Drift = -0.04 dB

Peak SAR (extrapolated) = 0.0330 W/kg

**SAR(1 g) = 0.016 W/kg; SAR(10 g) = 0.010 W/kg**

Maximum value of SAR (measured) = 0.0247 W/kg



0 dB = 0.0247 W/kg = -16.07 dBW/kg

1.1.1. DAE4 Calibration Certificate



In Collaboration with  
 Add: No.52 HuaYuanBei Road, Haidian District, Beijing, 100191, China  
 Tel: +86-10-62304633-2117  
 E-mail: emf@caict.ac.cn <http://www.caict.ac.cn>



中国认可  
 国际互认  
 校准  
 CALIBRATION  
 CNAS L0570

Client : **HTW**

Certificate No: **24J02Z000320**

CALIBRATION CERTIFICATE			
Object	DAE4 - SN: 1549		
Calibration Procedure(s)	FF-Z11-002-01 Calibration Procedure for the Data Acquisition Electronics (DAEx)		
Calibration date:	April 16, 2024		
<p>This calibration Certificate documents the traceability to national standards, which realize the physical units of measurements(SI). The measurements and the uncertainties with confidence probability are given on the following pages and are part of the certificate.</p> <p>All calibrations have been conducted in the closed laboratory facility: environment temperature(22±3)°C and humidity&lt;70%.</p> <p>Calibration Equipment used (M&amp;TE critical for calibration)</p>			
Primary Standards	ID #	Cal Date(Calibrated by, Certificate No.)	Scheduled Calibration
Process Calibrator 753	1971018	12-Jun-23 (CTTL, No.J23X05436)	Jun-24
Calibrated by:	Name Yu Zongying	Function SAR Test Engineer	Signature 
Reviewed by:	Lin Jun	SAR Test Engineer	
Approved by:	Qi Dianyuan	SAR Project Leader	
			Issued: April 17, 2024
This calibration certificate shall not be reproduced except in full without written approval of the laboratory.			



Add: No.52 HuaYuanBei Road, Haidian District, Beijing, 100191, China  
Tel: +86-10-62304633-2117  
E-mail: emf@caict.ac.cn <http://www.caict.ac.cn>

**Glossary:**

DAE data acquisition electronics  
Connector angle information used in DASY system to align probe sensor X to the robot coordinate system.

**Methods Applied and Interpretation of Parameters:**

- *DC Voltage Measurement:* Calibration Factor assessed for use in DASY system by comparison with a calibrated instrument traceable to national standards. The figure given corresponds to the full scale range of the voltmeter in the respective range.
- *Connector angle:* The angle of the connector is assessed measuring the angle mechanically by a tool inserted. Uncertainty is not required.
- The report provide only calibration results for DAE, it does not contain other performance test results.



Add: No.52 HuaYuanBei Road, Haidian District, Beijing, 100191, China  
Tel: +86-10-62304633-2117  
E-mail: emf@caict.ac.cn <http://www.caict.ac.cn>

**DC Voltage Measurement**

A/D - Converter Resolution nominal

High Range: 1LSB = 6.1μV , full range = -100...+300 mV

Low Range: 1LSB = 61nV , full range = -1.....+3mV

DASY measurement parameters: Auto Zero Time: 3 sec; Measuring time: 3 sec

Calibration Factors	X	Y	Z
High Range	406.369 ± 0.15% (k=2)	406.051 ± 0.15% (k=2)	406.200 ± 0.15% (k=2)
Low Range	3.98561 ± 0.7% (k=2)	3.99305 ± 0.7% (k=2)	3.99389 ± 0.7% (k=2)

**Connector Angle**


Connector Angle to be used in DASY system	17.5° ± 1 °
---	-------------

1.2. Probe Calibration Certificate




In Collaboration with  
**TTLspeag**  
CALIBRATION LABORATORY

Add: No.52 HuaYuanBei Road, Haidian District, Beijing, 100191, China  
Tel: +86-10-62304633-2117  
E-mail: emf@caict.ac.cn      http://www.caict.ac.cn



中国认可  
国际互认  
校准  
CALIBRATION  
CNAS L0570



**CAICT**

Client **HTW**
Certificate No: **24J02Z000321**

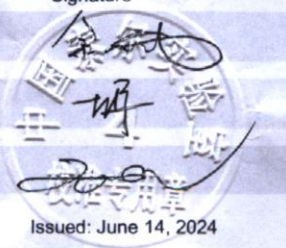
**CALIBRATION CERTIFICATE**

Object	EX3DV4 - SN : 7494
Calibration Procedure(s)	FF-Z11-004-02 Calibration Procedures for Dosimetric E-field Probes
Calibration date:	June 07, 2024

This calibration Certificate documents the traceability to national standards, which realize the physical units of measurements(SI). The measurements and the uncertainties with confidence probability are given on the following pages and are part of the certificate.  
All calibrations have been conducted in the closed laboratory facility: environment temperature(22±3)°C and humidity<70%.  
Calibration Equipment used (M&TE critical for calibration)

Primary Standards	ID #	Cal Date(Calibrated by, Certificate No.)	Scheduled Calibration
Power Meter NRP2	106277	19-Oct-23(CTTL, No.J23X11026)	Oct-24
Power sensor NRP8S	104291	19-Oct-23(CTTL, No.J23X11026)	Oct-24
Power sensor NRP8S	104292	19-Oct-23(CTTL, No.J23X11026)	Oct-24
Reference 10dBAttenuator	18N50W-10dB	19-Jan-23(CTTL, No.J23X00212)	Jan-25
Reference 20dBAttenuator	18N50W-20dB	19-Jan-23(CTTL, No.J23X00211)	Jan-25
Reference Probe EX3DV4	SN 7464	22-Jan-24(SPEAG, No.EX-7464_Jan24)	Jan-25
DAE4	SN 1555	24-Aug-23(SPEAG, No.DAE4-1555_Aug23)	Aug-24

Secondary Standards	ID #	Cal Date(Calibrated by, Certificate No.)	Scheduled Calibration
SignalGenerator MG3700A	6201052605	12-Jun-23(CTTL, No.J23X05434)	Jun-24
SignalGenerator APSIN26G	181-33A6D0700-1959	26-Mar-24(CTTL, No.24J02X002468)	Mar-25
Network Analyzer E5071C	MY46110673	25-Dec-23(CTTL, No.J23X13425)	Dec-24
Reference 10dBAttenuator	BT0520	11-May-23(CTTL, No.J23X04061)	May-25
Reference 20dBAttenuator	BT0267	11-May-23(CTTL, No.J23X04062)	May-25
OCF DAK-12	SN 1174	25-Oct-23(SPEAG, No.OCP-DAK12-1174_Oct23)	Oct-24

	Name	Function	Signature
Calibrated by:	Yu Zongying	SAR Test Engineer	 Issued: June 14, 2024
Reviewed by:	Lin Jun	SAR Test Engineer	
Approved by:	Qi Dianyuan	SAR Project Leader	

This calibration certificate shall not be reproduced except in full without written approval of the laboratory.



In Collaboration with  
**s p e a g**  
 CALIBRATION LABORATORY



Add: No.52 HuaYuanBei Road, Haidian District, Beijing, 100191, China  
 Tel: +86-10-62304633-2117  
 E-mail: emf@caict.ac.cn <http://www.caict.ac.cn>

### Glossary:

TSL	tissue simulating liquid
NORM <sub>x,y,z</sub>	sensitivity in free space
ConvF	sensitivity in TSL / NORM <sub>x,y,z</sub>
DCP	diode compression point
CF	crest factor (1/duty_cycle) of the RF signal
A,B,C,D	modulation dependent linearization parameters
Polarization $\Phi$	$\Phi$ rotation around probe axis
Polarization $\theta$	$\theta$ rotation around an axis that is in the plane normal to probe axis (at measurement center), $i$ $\theta=0$ is normal to probe axis

Connector Angle information used in DASY system to align probe sensor X to the robot coordinate system

### Calibration is Performed According to the Following Standards:

- IEEE Std 1528-2013, "IEEE Recommended Practice for Determining the Peak Spatial-Averaged Specific Absorption Rate (SAR) in the Human Head from Wireless Communications Devices: Measurement Techniques", June 2013
- IEC 62209-1, "Measurement procedure for the assessment of Specific Absorption Rate (SAR) from hand-held and body-mounted devices used next to the ear (frequency range of 300 MHz to 6 GHz)", July 2016
- IEC 62209-2, "Procedure to determine the Specific Absorption Rate (SAR) for wireless communication devices used in close proximity to the human body (frequency range of 30 MHz to 6 GHz)", March 2010
- KDB 865664, "SAR Measurement Requirements for 100 MHz to 6 GHz"

### Methods Applied and Interpretation of Parameters:

- NORM<sub>x,y,z</sub>**: Assessed for E-field polarization  $\theta=0$  ( $f \leq 900\text{MHz}$  in TEM-cell;  $f > 1800\text{MHz}$ : waveguide). NORM<sub>x,y,z</sub> are only intermediate values, i.e., the uncertainties of NORM<sub>x,y,z</sub> does not effect the  $E^2$ -field uncertainty inside TSL (see below ConvF).
- NORM(f)<sub>x,y,z</sub>** = NORM<sub>x,y,z</sub> \* frequency\_response (see Frequency Response Chart). This linearization is implemented in DASY4 software versions later than 4.2. The uncertainty of the frequency response is included in the stated uncertainty of ConvF.
- DCP<sub>x,y,z</sub>**: DCP are numerical linearization parameters assessed based on the data of power sweep (no uncertainty required). DCP does not depend on frequency nor media.
- PAR**: PAR is the Peak to Average Ratio that is not calibrated but determined based on the signal characteristics.
- A<sub>x,y,z</sub>; B<sub>x,y,z</sub>; C<sub>x,y,z</sub>; VR<sub>x,y,z</sub>; A,B,C** are numerical linearization parameters assessed based on the data of power sweep for specific modulation signal. The parameters do not depend on frequency nor media. VR is the maximum calibration range expressed in RMS voltage across the diode.
- ConvF and Boundary Effect Parameters**: Assessed in flat phantom using E-field (or Temperature Transfer Standard for  $f \leq 800\text{MHz}$ ) and inside waveguide using analytical field distributions based on power measurements for  $f > 800\text{MHz}$ . The same setups are used for assessment of the parameters applied for boundary compensation (alpha, depth) of which typical uncertainty valued are given. These parameters are used in DASY4 software to improve probe accuracy close to the boundary. The sensitivity in TSL corresponds to NORM<sub>x,y,z</sub> \* ConvF whereby the uncertainty corresponds to that given for ConvF. A frequency dependent ConvF is used in DASY version 4.4 and higher which allows extending the validity from  $\pm 50\text{MHz}$  to  $\pm 100\text{MHz}$ .
- Spherical isotropy (3D deviation from isotropy)**: in a field of low gradients realized using a flat phantom exposed by a patch antenna.
- Sensor Offset**: The sensor offset corresponds to the offset of virtual measurement center from the probe tip (on probe axis). No tolerance required.
- Connector Angle**: The angle is assessed using the information gained by determining the NORM<sub>x</sub> (no uncertainty required).

Certificate No: 24J02Z000321

Page 2 of 9





In Collaboration with  
**s p e a g**  
 CALIBRATION LABORATORY



Add: No.52 HuaYuanBei Road, Haidian District, Beijing, 100191, China  
 Tel: +86-10-62304633-2117  
 E-mail: emf@caict.ac.cn      http://www.caict.ac.cn

## DASY/EASY – Parameters of Probe: EX3DV4 – SN:7494

### Basic Calibration Parameters

	Sensor X	Sensor Y	Sensor Z	Unc ( $k=2$ )
Norm( $\mu\text{V}/(\text{V}/\text{m})^2$ ) <sup>A</sup>	0.40	0.47	0.41	$\pm 10.0\%$
DCP(mV) <sup>B</sup>	99.9	100.2	100.1	

### Modulation Calibration Parameters

UID	Communication System Name		A dB	B dB $\sqrt{\mu\text{V}}$	C	D dB	VR mV	Unc <sup>E</sup> ( $k=2$ )
0	CW	X	0.0	0.0	1.0	0.00	156.2	$\pm 2.0\%$
		Y	0.0	0.0	1.0		169.5	
		Z	0.0	0.0	1.0		158.4	

The reported uncertainty of measurement is stated as the standard uncertainty of Measurement multiplied by the coverage factor  $k=2$ , which for a normal distribution Corresponds to a coverage probability of approximately 95%.

<sup>A</sup> The uncertainties of Norm X, Y, Z do not affect the E<sup>2</sup>-field uncertainty inside TSL (see Page 4).

<sup>B</sup> Numerical linearization parameter: uncertainty not required.

<sup>E</sup> Uncertainty is determined using the max. deviation from linear response applying rectangular distribution and is expressed for the square of the field value.