

# Specifications approval Datasheet

**Same customer name**

( Customer Name)

**product name** BN500 Thin Battery-NFC  
Antenna

(Specification)

**Customer Part Number** 302-EP532H00004

( Product number )

**Product Model:** Antenna Specifications:

(Original/Reserve)

**Sample delivery date** 2024-01-08

(date)

|                        |                                     |         |  |
|------------------------|-------------------------------------|---------|--|
| batch                  | Near Field Communication (13.56MHz) |         |  |
| Version                | A                                   |         |  |
| rare                   | Peng Wei                            | element |  |
| Structure              | Yang Xuezhong                       |         |  |
| client<br>confirmation |                                     |         |  |
| date                   |                                     |         |  |

# contents

## 1. Mark

## 2. Electrical properties

### 2.1 Antenna Test

### 2.2 Antenna Performance

## 3. Attached photos

### 3.1 S11 test electrical performance

## 4. Actual performance test

## 5. Structural drawings

1. Logo:

This report summarizes the results of the EP532H-NFC chip electrical performance and recommends the design of an internal antenna to support the EP532H Thin Battery-NFC Antenna project. The antenna is a 13.56MHz band



NFC+Ferrite Antenna

## 2. Electrical performance

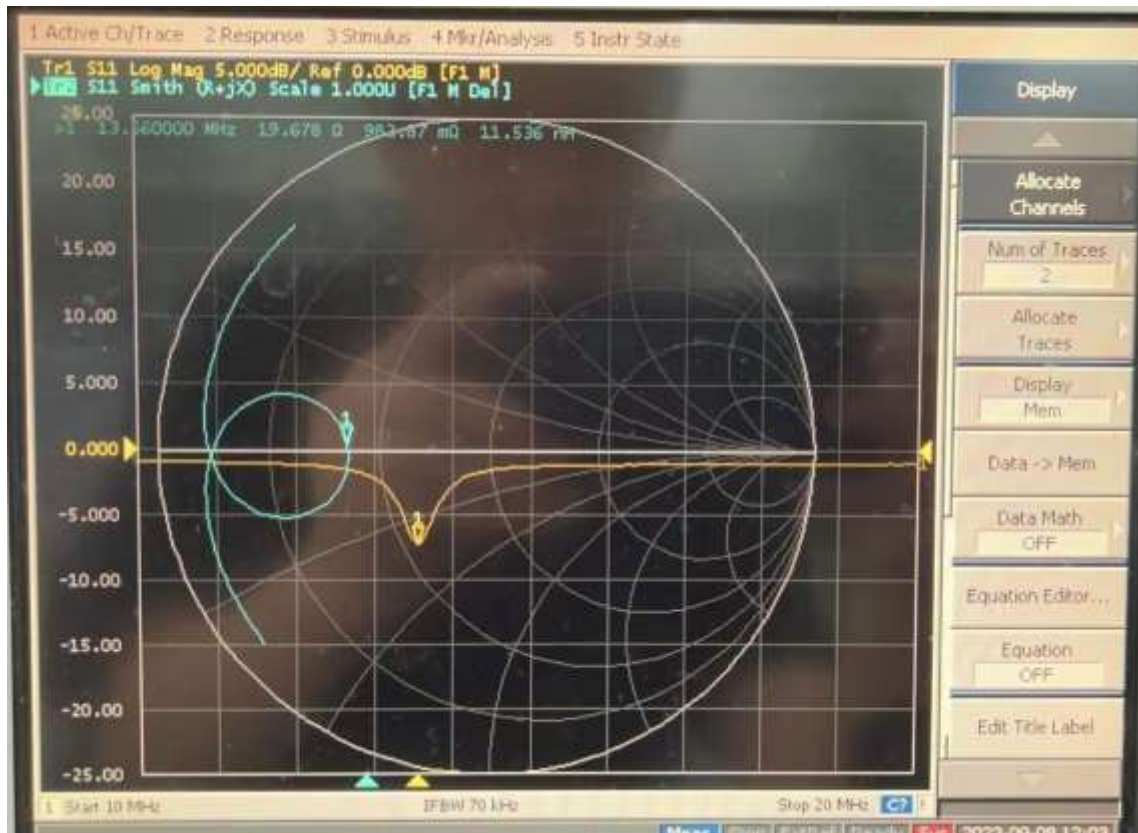
### 2.1 Antenna Test

| frequency | pull      | rupee  | ratio | Fra         | ask |
|-----------|-----------|--------|-------|-------------|-----|
| 13.56 MHz | 1.0~2.0uH | <1 ohm | >1.5K | >35 million | >10 |

### 2.2 Antenna Performance

The used installation packages have been tested and the cards were used for testing.

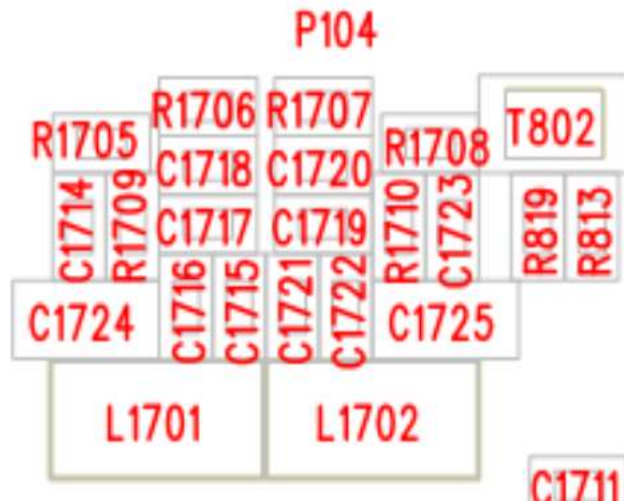
## 3. Attached photos



S11 Test electrical performance

4: Actual card performance test ( **mainboard has been changed** )

| Test card category | Actual distance (mm) |
|--------------------|----------------------|
| Type 1             | forty five           |
| Type 2             | forty five           |
| Type 3             | forty five           |
| Type 4             | 20                   |
| Type 5             | 60                   |



| Change Location           | Matching value before change | Modified matching value |
|---------------------------|------------------------------|-------------------------|
| C1724+C1725               | 560PF                        | <b>680PF</b>            |
| C1715+C1722               | CNC                          | <b>4.0PF</b>            |
| C1716+C1721               | 18PF                         | <b>39PF</b>             |
| C1717+C1719               | CNC                          | <b>82PF</b>             |
| <b>No source is given</b> |                              |                         |

5: Structure diagram

