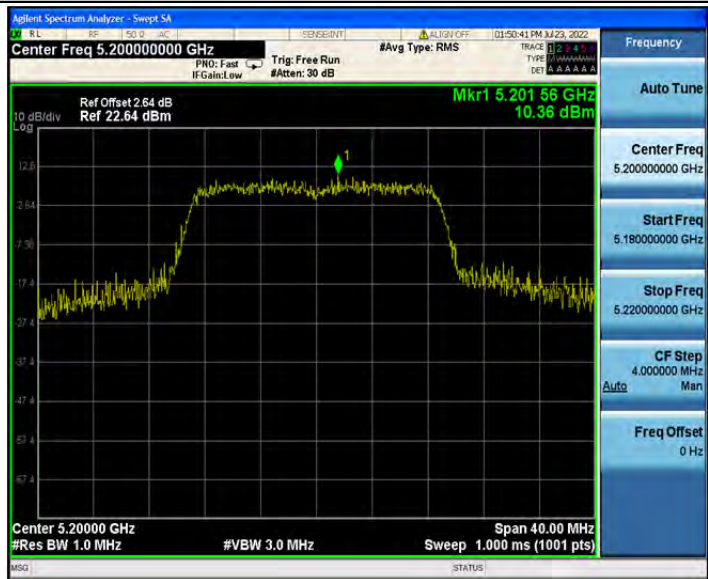
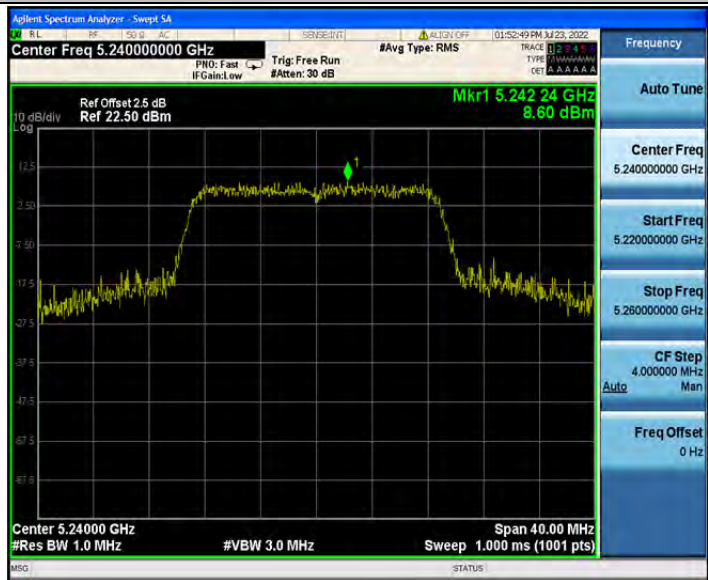




802.11n(HT20)_5200



802.11n(HT20)_5240



802.11n(HT20)_5260



802.11n(HT20)_5280



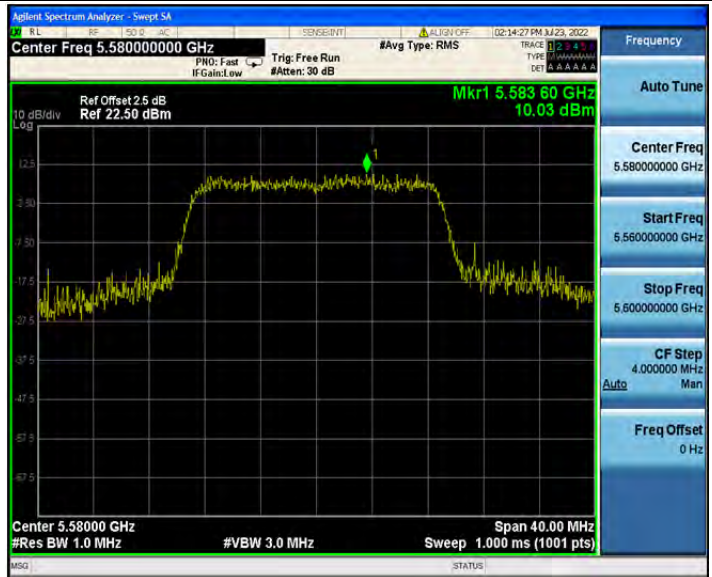
802.11n(HT20)_5320



802.11n(HT20)_5500



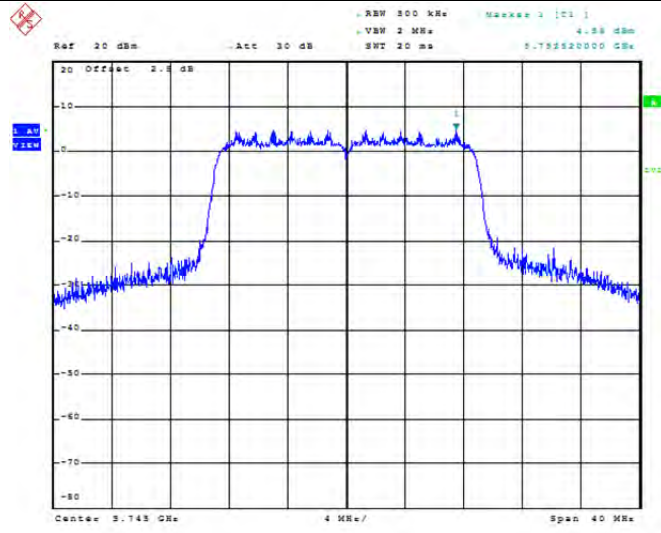
802.11n(HT20)_5580



802.11n(HT20)_5700

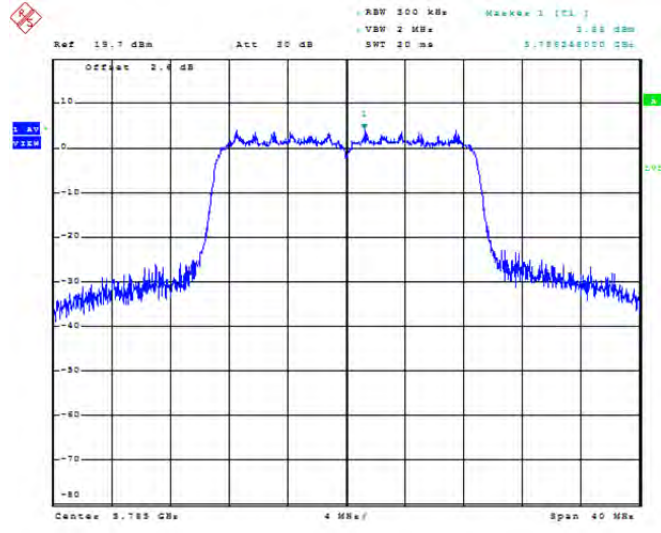


802.11n(HT20)_5745



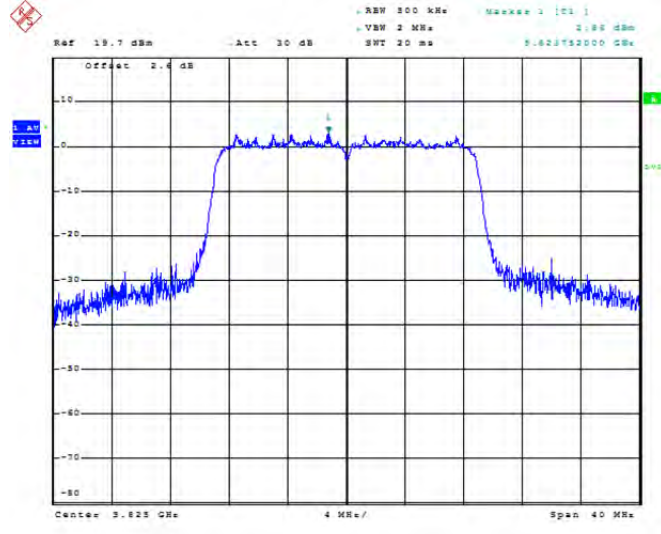
Date: 26.JUL.2022 15:20:11

802.11n(HT20)_5785



Date: 26.JUL.2022 15:21:12

802.11n(HT20)_5825



Date: 26.JUL.2022 15:22:04

802.11n(HT40)_5190



802.11n(HT40)_5230



802.11n(HT40)_5270



802.11n(HT40)_5310



802.11n(HT40)_5510



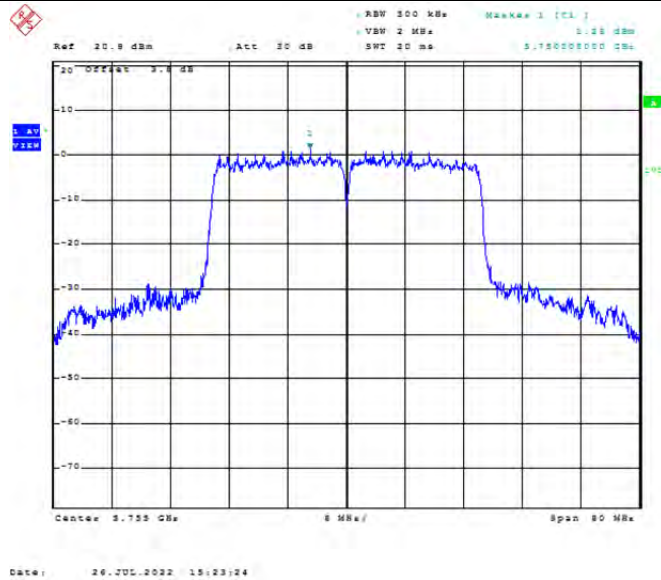
802.11n(HT40)_5550



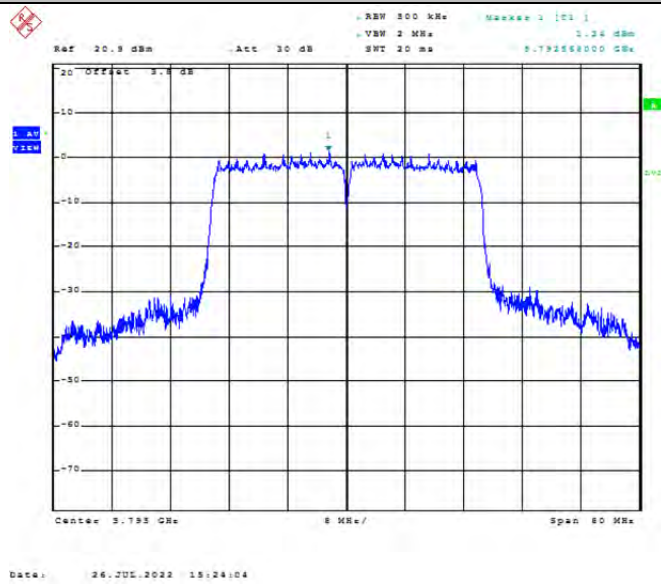
802.11n(HT40)_5670



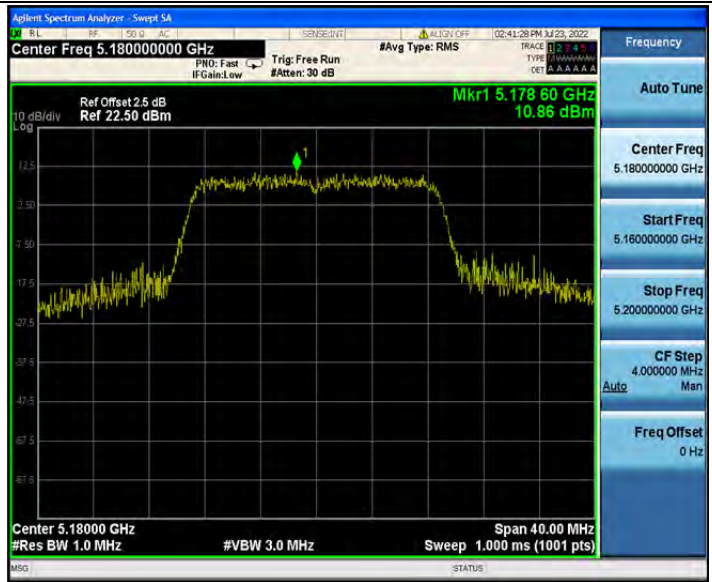
802.11n(HT40)_5755



802.11n(HT40)_5795



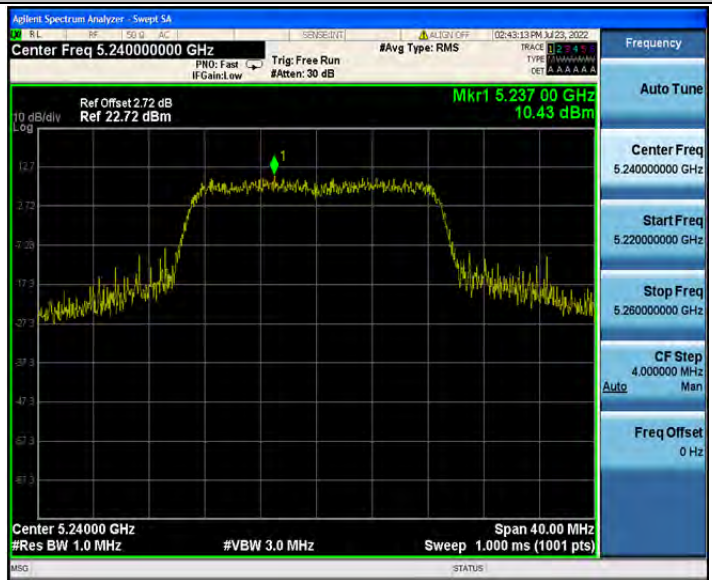
802.11ac(VHT20)_5180



802.11ac(VHT20)_5200



802.11ac(VHT20)_5240



802.11ac(VHT20)_5260



802.11ac(VHT20)_5280



802.11ac(VHT20)_5320



802.11ac(VHT20)_5500



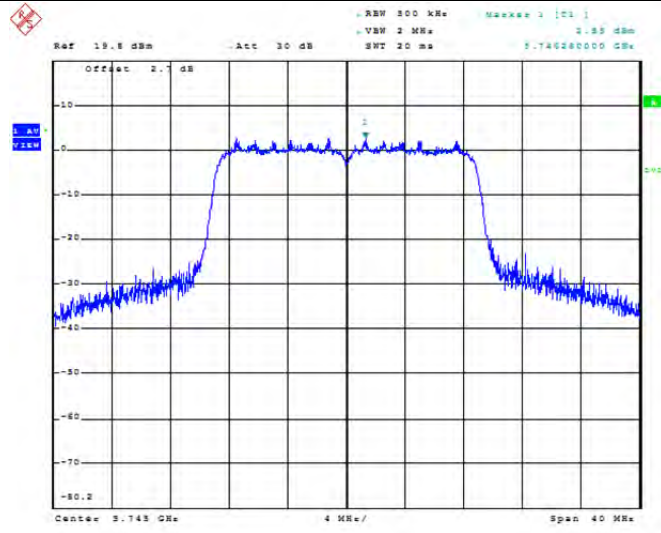
802.11ac(VHT20)_5580



802.11ac(VHT20)_5700

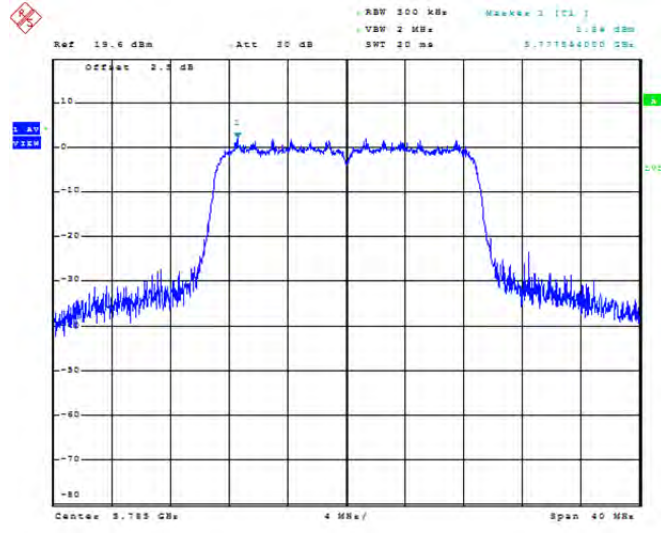


802.11ac(VHT20)_5745



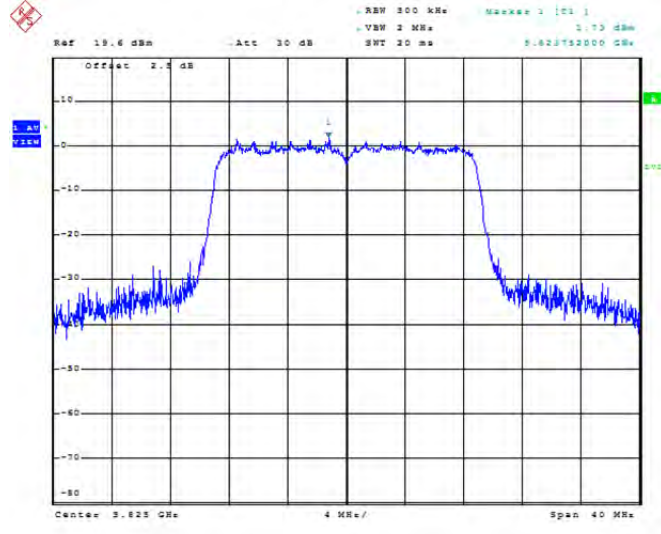
Date: 26.JUL.2022 15:25:11

802.11ac(VHT20)_5785



Date: 26.JUL.2022 15:26:29

802.11ac(VHT20)_5825



Date: 26.JUL.2022 15:30:33

802.11ac(VHT40)_5190



802.11ac(VHT40)_5230



802.11ac(VHT40)_5270



802.11ac(VHT40)_5310



802.11ac(VHT40)_5510



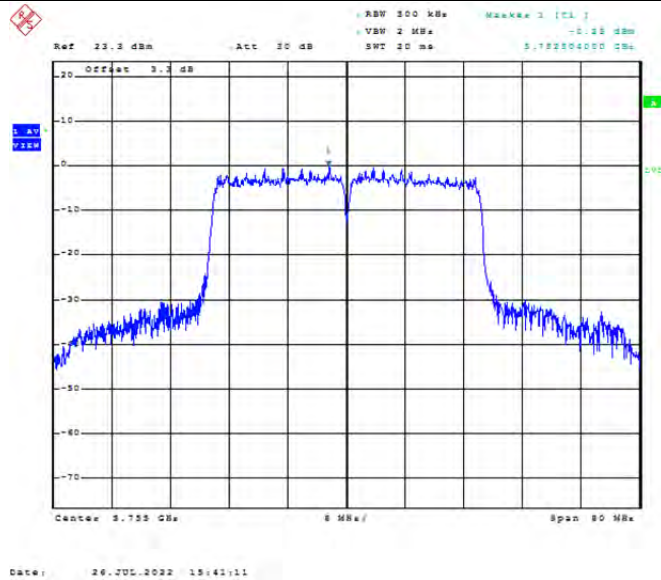
802.11ac(VHT40)_5550



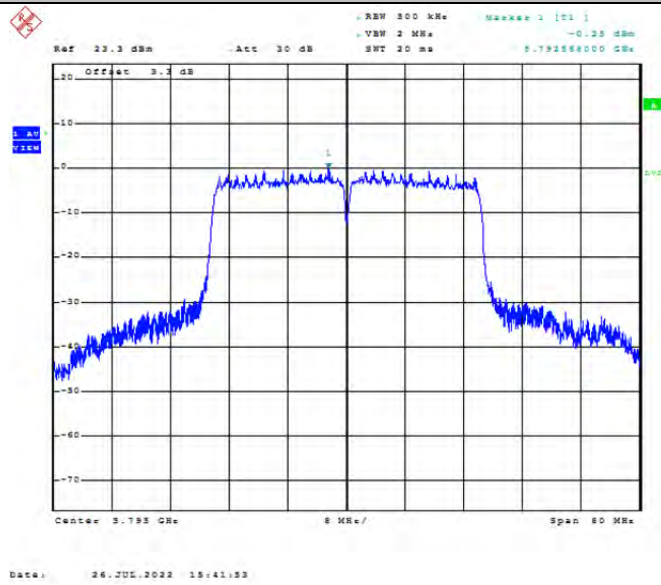
802.11ac(VHT40)_5670



802.11ac(VHT40)_5755



802.11ac(VHT40)_5795



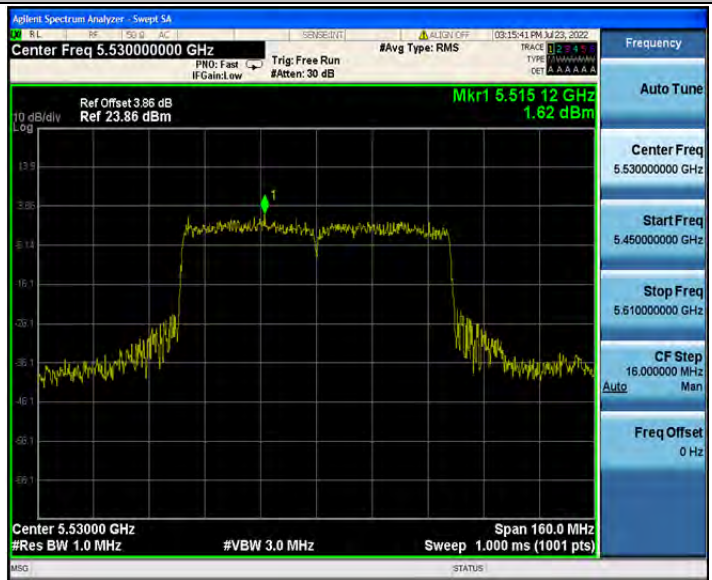
802.11ac(VHT80)_5210



802.11ac(VHT80)_5290



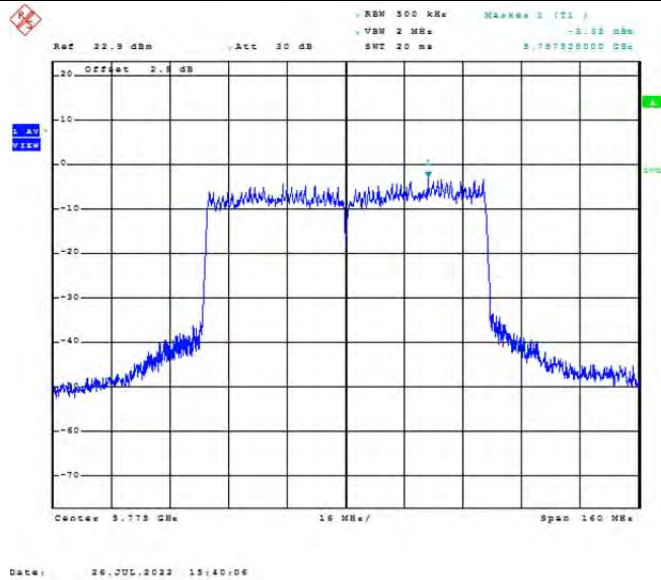
802.11ac(VHT80)_5530



802.11ac(VHT80)_5610



802.11ac(VHT80)_5775



Appendix D: Frequency Stability

Test Result

Voltage							
Test Mode	Channel	Voltage [Vdc]	Temperature (°C)	Deviation (Hz)	Deviation (ppm)	Limit (ppm)	Verdict
20MHz	5180	NV	NT	0	0	20	PASS
		LV	NT	-14000	-2.702703	20	PASS
		HV	NT	-14000	-2.702703	20	PASS
	5200	NV	NT	0	0	20	PASS
		LV	NT	-17000	-3.269231	20	PASS
		HV	NT	-17000	-3.269231	20	PASS
	5240	NV	NT	-19000	-3.625954	20	PASS
		LV	NT	-19000	-3.625954	20	PASS
		HV	NT	-19000	-3.625954	20	PASS
	5260	NV	NT	0	0	20	PASS
		LV	NT	-19000	-3.612167	20	PASS
		HV	NT	-19000	-3.612167	20	PASS
	5280	NV	NT	-20000	-3.787879	20	PASS
		LV	NT	-20000	-3.787879	20	PASS
		HV	NT	-20000	-3.787879	20	PASS
	5320	NV	NT	0	0	20	PASS
		LV	NT	-20000	-3.759398	20	PASS
		HV	NT	-20000	-3.759398	20	PASS
	5500	NV	NT	0	0	20	PASS
		LV	NT	-21000	-3.818182	20	PASS
		HV	NT	-21000	-3.818182	20	PASS
	5580	NV	NT	-21000	-3.763441	20	PASS
		LV	NT	-22000	-3.942652	20	PASS
		HV	NT	-22000	-3.942652	20	PASS
	5700	NV	NT	0	0	20	PASS
		LV	NT	-22000	-3.859649	20	PASS
		HV	NT	-22000	-3.859649	20	PASS
	5745	NV	NT	-21000	-3.655352	20	PASS
		LV	NT	-21000	-3.655352	20	PASS
		HV	NT	-21000	-3.655352	20	PASS
	5785	NV	NT	0	0	20	PASS
		LV	NT	-21000	-3.630078	20	PASS
		HV	NT	-21000	-3.630078	20	PASS
	5825	NV	NT	-21000	-3.60515	20	PASS
		LV	NT	-21000	-3.60515	20	PASS
		HV	NT	-22000	-3.776824	20	PASS
40MHz	5190	NV	NT	0	0	20	PASS
		LV	NT	-19000	-3.660886	20	PASS
		HV	NT	-19000	-3.660886	20	PASS
	5230	NV	NT	-20000	-3.824092	20	PASS

		LV	NT	-20000	-3.824092	20	PASS
		HV	NT	-21000	-4.015296	20	PASS
	5270	NV	NT	0	0	20	PASS
		LV	NT	-21000	-3.98482	20	PASS
		HV	NT	-21000	-3.98482	20	PASS
	5310	NV	NT	0	0	20	PASS
		LV	NT	-21000	-3.954802	20	PASS
		HV	NT	-21000	-3.954802	20	PASS
	5510	NV	NT	0	0	20	PASS
		LV	NT	-21000	-3.811252	20	PASS
		HV	NT	-21000	-3.811252	20	PASS
	5550	NV	NT	0	0	20	PASS
		LV	NT	-22000	-3.963964	20	PASS
		HV	NT	-22000	-3.963964	20	PASS
	5670	NV	NT	0	0	20	PASS
		LV	NT	-22000	-3.880071	20	PASS
		HV	NT	-22000	-3.880071	20	PASS
	5755	NV	NT	0	0	20	PASS
		LV	NT	-22000	-3.822763	20	PASS
		HV	NT	-22000	-3.822763	20	PASS
5795	NV	NT	0	0	20	PASS	
	LV	NT	-22000	-3.796376	20	PASS	
	HV	NT	-22000	-3.796376	20	PASS	
80MHz	5210	NV	NT	0	0	20	PASS
		LV	NT	-20000	-3.838772	20	PASS
		HV	NT	-20000	-3.838772	20	PASS
	5290	NV	NT	0	0	20	PASS
		LV	NT	-20000	-3.780718	20	PASS
		HV	NT	-20000	-3.780718	20	PASS
	5530	NV	NT	0	0	20	PASS
		LV	NT	-21000	-3.797468	20	PASS
		HV	NT	-21000	-3.797468	20	PASS
	5610	NV	NT	-22000	-3.921569	20	PASS
		LV	NT	-22000	-3.921569	20	PASS
		HV	NT	-22000	-3.921569	20	PASS
	5775	NV	NT	0	0	20	PASS
		LV	NT	-22000	-3.809524	20	PASS
		HV	NT	-22000	-3.809524	20	PASS

Temperature							
TestMode	Channel	Voltage [Vdc]	Temperature (°C)	Deviation (Hz)	Deviation (ppm)	Limit (ppm)	Verdict
20MHz	5180	NV	0	-16000	-3.088803	20	PASS
		NV	10	-16000	-3.088803	20	PASS
		NV	20	-16000	-3.088803	20	PASS
		NV	30	-16000	-3.088803	20	PASS
		NV	40	-16000	-3.088803	20	PASS
		NV	50	-16000	-3.088803	20	PASS
	5200	NV	0	-18000	-3.461538	20	PASS
		NV	10	-18000	-3.461538	20	PASS
		NV	20	-18000	-3.461538	20	PASS
		NV	30	-18000	-3.461538	20	PASS
		NV	40	-18000	-3.461538	20	PASS
		NV	50	-18000	-3.461538	20	PASS
	5240	NV	0	-19000	-3.625954	20	PASS
		NV	10	-19000	-3.625954	20	PASS
		NV	20	-19000	-3.625954	20	PASS
		NV	30	-19000	-3.625954	20	PASS
		NV	40	-19000	-3.625954	20	PASS
		NV	50	-19000	-3.625954	20	PASS
	5260	NV	0	-19000	-3.612167	20	PASS
		NV	10	-19000	-3.612167	20	PASS
		NV	20	-19000	-3.612167	20	PASS
		NV	30	-19000	-3.612167	20	PASS
		NV	40	-20000	-3.802281	20	PASS
		NV	50	-20000	-3.802281	20	PASS
	5280	NV	0	-20000	-3.787879	20	PASS
		NV	10	-20000	-3.787879	20	PASS
		NV	20	-20000	-3.787879	20	PASS
		NV	30	-20000	-3.787879	20	PASS
		NV	40	-20000	-3.787879	20	PASS
		NV	50	-20000	-3.787879	20	PASS
	5320	NV	0	-20000	-3.759398	20	PASS
		NV	10	-20000	-3.759398	20	PASS
		NV	20	-20000	-3.759398	20	PASS
		NV	30	-20000	-3.759398	20	PASS
		NV	40	-20000	-3.759398	20	PASS
		NV	50	-20000	-3.759398	20	PASS
	5500	NV	0	-21000	-3.818182	20	PASS
		NV	10	-21000	-3.818182	20	PASS
		NV	20	-21000	-3.818182	20	PASS
		NV	30	-21000	-3.818182	20	PASS
		NV	40	-21000	-3.818182	20	PASS
		NV	50	-21000	-3.818182	20	PASS
5580	NV	0	-21000	-3.763441	20	PASS	

		NV	10	-21000	-3.763441	20	PASS
		NV	20	-22000	-3.942652	20	PASS
		NV	30	-21000	-3.763441	20	PASS
		NV	40	-21000	-3.763441	20	PASS
		NV	50	-22000	-3.942652	20	PASS
	5700	NV	0	-22000	-3.859649	20	PASS
		NV	10	-22000	-3.859649	20	PASS
		NV	20	-22000	-3.859649	20	PASS
		NV	30	-22000	-3.859649	20	PASS
		NV	40	-22000	-3.859649	20	PASS
		NV	50	-22000	-3.859649	20	PASS
	5745	NV	0	-21000	-3.655352	20	PASS
		NV	10	-22000	-3.829417	20	PASS
		NV	20	-22000	-3.829417	20	PASS
		NV	30	-21000	-3.655352	20	PASS
		NV	40	-21000	-3.655352	20	PASS
		NV	50	-21000	-3.655352	20	PASS
	5785	NV	0	-21000	-3.630078	20	PASS
		NV	10	-21000	-3.630078	20	PASS
		NV	20	-22000	-3.802939	20	PASS
		NV	30	-22000	-3.802939	20	PASS
		NV	40	-21000	-3.630078	20	PASS
		NV	50	-22000	-3.802939	20	PASS
	5825	NV	0	-22000	-3.776824	20	PASS
NV		10	-22000	-3.776824	20	PASS	
NV		20	-22000	-3.776824	20	PASS	
NV		30	-22000	-3.776824	20	PASS	
NV		40	-21000	-3.60515	20	PASS	
NV		50	-22000	-3.776824	20	PASS	
40MHz	5190	NV	0	-20000	-3.853565	20	PASS
		NV	10	-20000	-3.853565	20	PASS
		NV	20	-20000	-3.853565	20	PASS
		NV	30	-20000	-3.853565	20	PASS
		NV	40	-20000	-3.853565	20	PASS
		NV	50	-20000	-3.853565	20	PASS
	5230	NV	0	-21000	-4.015296	20	PASS
		NV	10	-20000	-3.824092	20	PASS
		NV	20	-20000	-3.824092	20	PASS
		NV	30	-21000	-4.015296	20	PASS
		NV	40	-20000	-3.824092	20	PASS
		NV	50	-20000	-3.824092	20	PASS
	5270	NV	0	-20000	-3.795066	20	PASS
		NV	10	-21000	-3.98482	20	PASS
		NV	20	-21000	-3.98482	20	PASS
		NV	30	-21000	-3.98482	20	PASS
		NV	40	-21000	-3.98482	20	PASS

		NV	50	-21000	-3.98482	20	PASS
	5310	NV	0	-21000	-3.954802	20	PASS
		NV	10	-21000	-3.954802	20	PASS
		NV	20	-20000	-3.766478	20	PASS
		NV	30	-21000	-3.954802	20	PASS
		NV	40	-21000	-3.954802	20	PASS
		NV	50	-21000	-3.954802	20	PASS
	5510	NV	0	-22000	-3.99274	20	PASS
		NV	10	-21000	-3.811252	20	PASS
		NV	20	-21000	-3.811252	20	PASS
		NV	30	-22000	-3.99274	20	PASS
		NV	40	-22000	-3.99274	20	PASS
		NV	50	-22000	-3.99274	20	PASS
	5550	NV	0	-22000	-3.963964	20	PASS
		NV	10	-22000	-3.963964	20	PASS
		NV	20	-22000	-3.963964	20	PASS
		NV	30	-22000	-3.963964	20	PASS
		NV	40	-22000	-3.963964	20	PASS
		NV	50	-22000	-3.963964	20	PASS
	5670	NV	0	-22000	-3.880071	20	PASS
		NV	10	-22000	-3.880071	20	PASS
		NV	20	-22000	-3.880071	20	PASS
		NV	30	-22000	-3.880071	20	PASS
		NV	40	-22000	-3.880071	20	PASS
		NV	50	-22000	-3.880071	20	PASS
	5755	NV	0	-22000	-3.822763	20	PASS
		NV	10	-22000	-3.822763	20	PASS
		NV	20	-22000	-3.822763	20	PASS
		NV	30	-22000	-3.822763	20	PASS
		NV	40	-22000	-3.822763	20	PASS
		NV	50	-21000	-3.649001	20	PASS
	5795	NV	0	-22000	-3.796376	20	PASS
		NV	10	-22000	-3.796376	20	PASS
		NV	20	-22000	-3.796376	20	PASS
		NV	30	-22000	-3.796376	20	PASS
		NV	40	-22000	-3.796376	20	PASS
NV		50	-22000	-3.796376	20	PASS	
80MHz	5210	NV	0	-20000	-3.838772	20	PASS
		NV	10	-20000	-3.838772	20	PASS
		NV	20	-20000	-3.838772	20	PASS
		NV	30	-20000	-3.838772	20	PASS
		NV	40	-20000	-3.838772	20	PASS
		NV	50	-20000	-3.838772	20	PASS
	5290	NV	0	-20000	-3.780718	20	PASS
		NV	10	-20000	-3.780718	20	PASS
		NV	20	-20000	-3.780718	20	PASS

		NV	30	-20000	-3.780718	20	PASS
		NV	40	-21000	-3.969754	20	PASS
		NV	50	-21000	-3.969754	20	PASS
	5530	NV	0	-21000	-3.797468	20	PASS
		NV	10	-21000	-3.797468	20	PASS
		NV	20	-21000	-3.797468	20	PASS
		NV	30	-21000	-3.797468	20	PASS
		NV	40	-21000	-3.797468	20	PASS
		NV	50	-21000	-3.797468	20	PASS
	5610	NV	0	-22000	-3.921569	20	PASS
		NV	10	-22000	-3.921569	20	PASS
		NV	20	-22000	-3.921569	20	PASS
		NV	30	-22000	-3.921569	20	PASS
		NV	40	-21000	-3.743316	20	PASS
		NV	50	-21000	-3.743316	20	PASS
	5775	NV	0	-22000	-3.809524	20	PASS
		NV	10	-22000	-3.809524	20	PASS
		NV	20	-22000	-3.809524	20	PASS
		NV	30	-22000	-3.809524	20	PASS
		NV	40	-22000	-3.809524	20	PASS
		NV	50	-22000	-3.809524	20	PASS

Appendix E: Duty Cycle

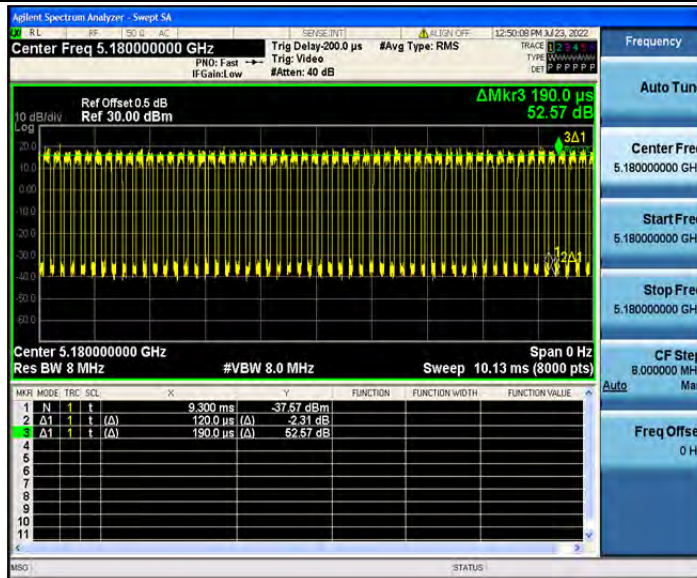
Test Result

Test Mode	Channel	Transmission Duration [ms]	Transmission Period [ms]	Duty Cycle [%]	1/T Minimum VBW (kHz)	Final setting For VBW (kHz)
802.11a	5180	0.12	0.19	63.16	8.33	10
	5200	0.12	0.19	63.16	8.33	10
	5240	0.11	0.19	57.89	9.09	10
	5260	0.11	0.19	57.89	9.09	10
	5280	0.11	0.18	61.11	9.09	10
	5320	0.11	0.18	61.11	9.09	10
	5500	0.11	0.18	61.11	9.09	10
	5580	0.11	0.19	57.89	9.09	10
	5700	0.11	0.19	57.89	9.09	10
	5745	0.11	0.19	57.89	9.09	10
	5785	0.12	0.19	63.16	8.33	10
	5825	0.11	0.19	57.89	9.09	10
802.11n(HT20)	5180	0.12	0.19	63.16	8.33	10
	5200	0.11	0.18	61.11	9.09	10
	5240	0.12	0.19	63.16	8.33	10
	5260	0.12	0.19	63.16	8.33	10
	5280	0.12	0.19	63.16	8.33	10
	5320	0.11	0.18	61.11	9.09	10
	5500	0.11	0.19	57.89	9.09	10
	5580	0.12	0.19	63.16	8.33	10
	5700	0.11	0.18	61.11	9.09	10
	5745	0.11	0.19	57.89	9.09	10
	5785	0.11	0.18	61.11	9.09	10
	5825	0.11	0.18	61.11	9.09	10
802.11n(HT40)	5190	0.08	0.15	53.33	12.50	15
	5230	0.07	0.14	50.00	14.29	15
	5270	0.07	0.14	50.00	14.29	15
	5310	0.07	0.15	46.67	14.29	15
	5510	0.07	0.14	50.00	14.29	15
	5550	0.07	0.14	50.00	14.29	15
	5670	0.07	0.15	46.67	14.29	15
	5755	0.07	0.15	46.67	14.29	15
	5795	0.07	0.15	46.67	14.29	15
802.11ac(VHT20)	5180	0.12	0.19	63.16	8.33	10
	5200	0.12	0.19	63.16	8.33	10
	5240	0.12	0.20	60.00	8.33	10
	5260	0.12	0.19	63.16	8.33	10
	5280	0.12	0.19	63.16	8.33	10
	5320	0.12	0.19	63.16	8.33	10
	5500	0.12	0.20	60.00	8.33	10

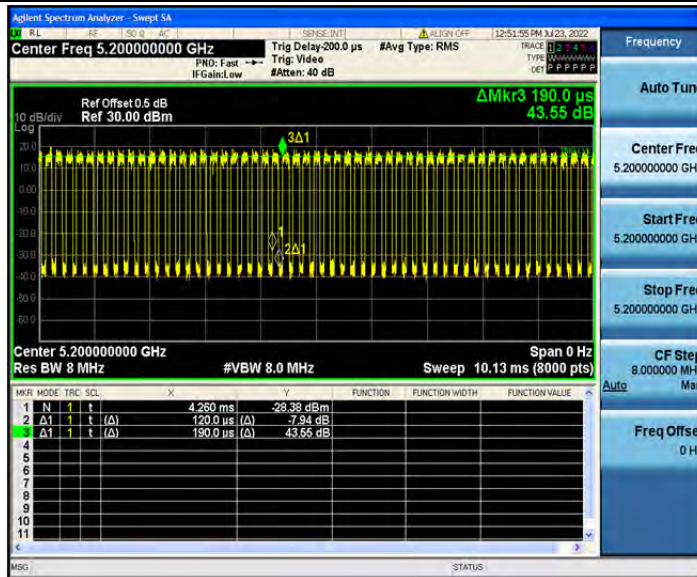
	5580	0.12	0.19	63.16	8.33	10
	5700	0.12	0.19	63.16	8.33	10
	5745	0.12	0.20	60.00	8.33	10
	5785	0.12	0.19	63.16	8.33	10
	5825	0.12	0.19	63.16	8.33	10
802.11ac(VHT40)	5190	0.08	0.15	53.33	12.50	15
	5230	0.08	0.15	53.33	12.50	15
	5270	0.09	0.16	56.25	11.11	15
	5310	0.08	0.16	50.00	12.50	15
	5510	0.08	0.16	50.00	12.50	15
	5550	0.09	0.16	56.25	11.11	15
	5670	0.08	0.15	53.33	12.50	15
	5755	0.08	0.15	53.33	12.50	15
	5795	0.09	0.16	56.25	11.11	15
802.11ac(VHT80)	5210	0.06	0.13	46.15	16.67	20
	5290	0.06	0.13	46.15	16.67	20
	5530	0.06	0.13	46.15	16.67	20
	5610	0.06	0.13	46.15	16.67	20
	5775	0.06	0.13	46.15	16.67	20

Test Graphs

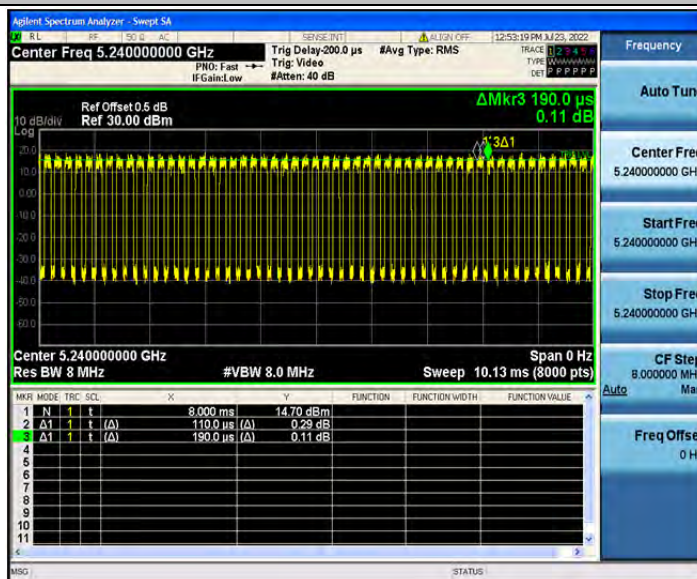
802.11a_5180



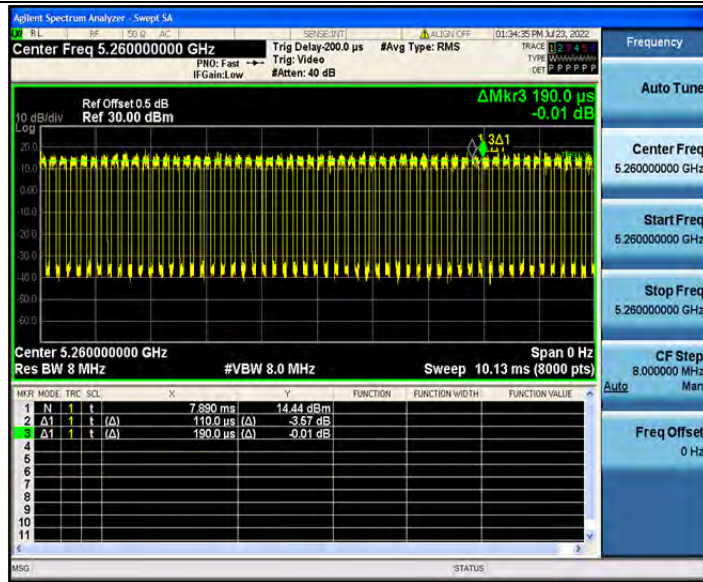
802.11a_5200



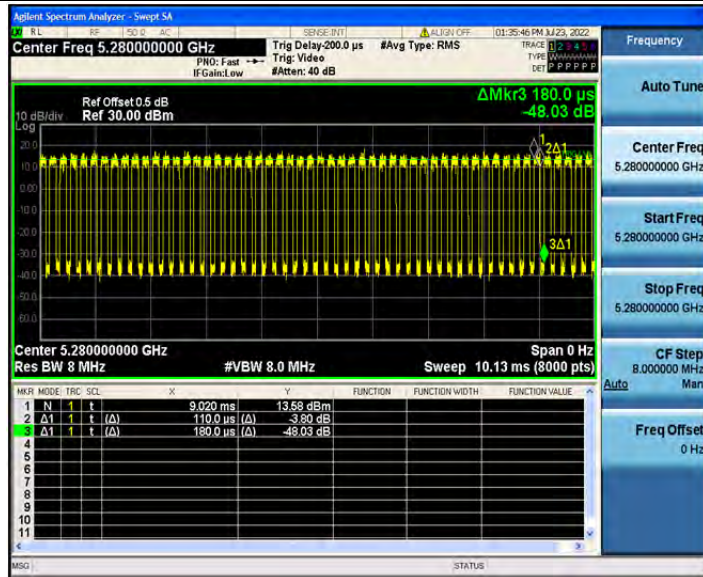
802.11a_5240



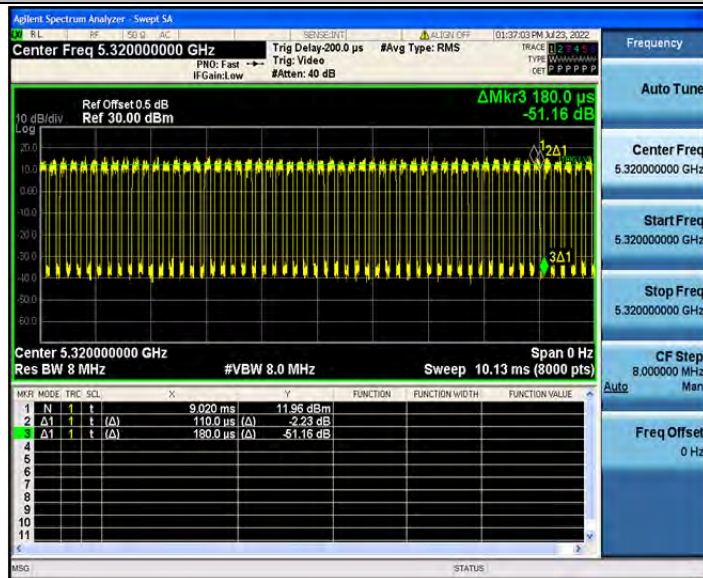
802.11a_5260



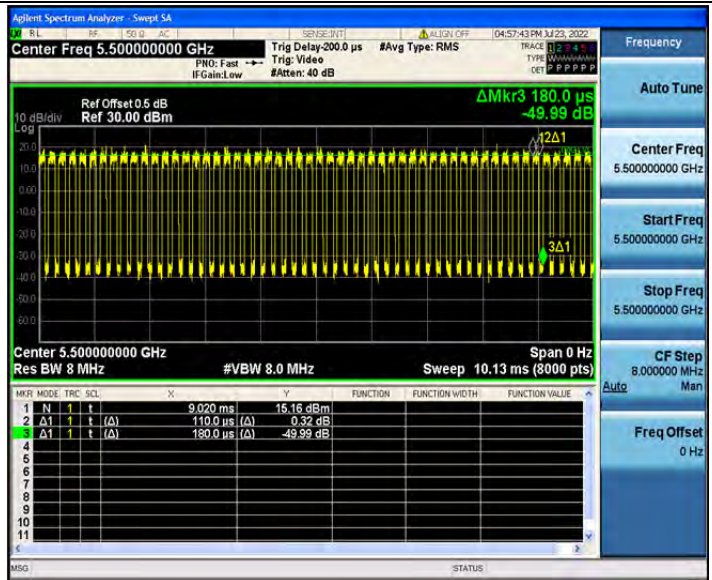
802.11a_5280



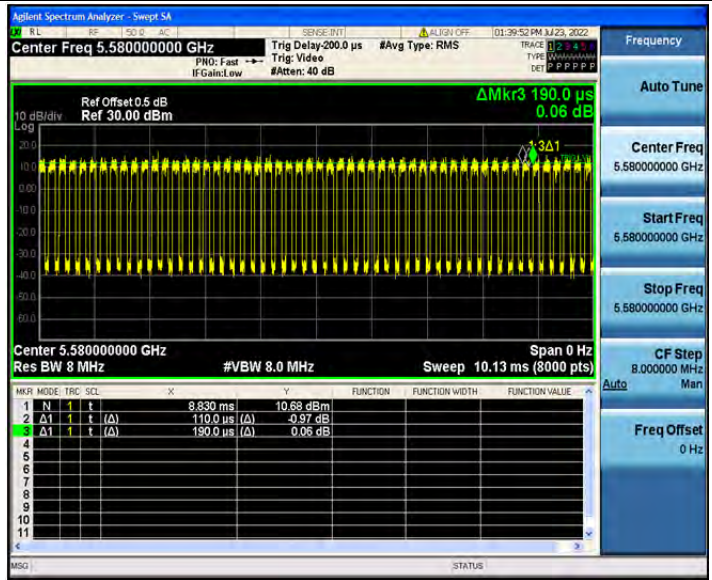
802.11a_5320



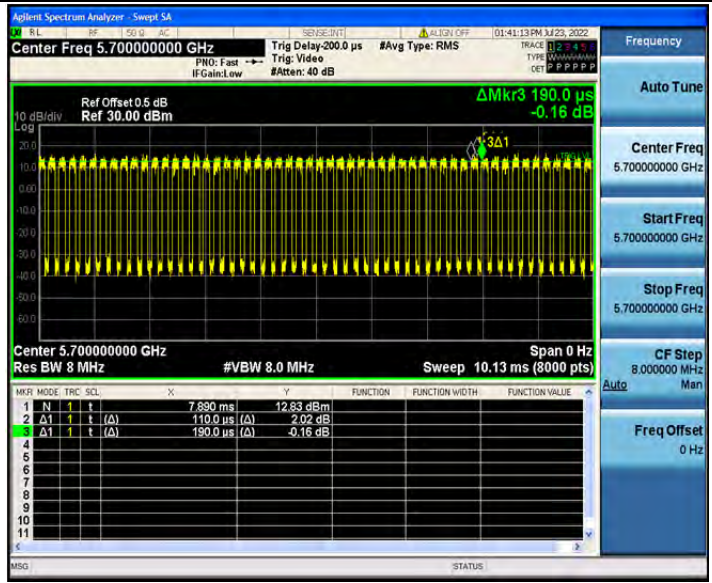
802.11a_5500



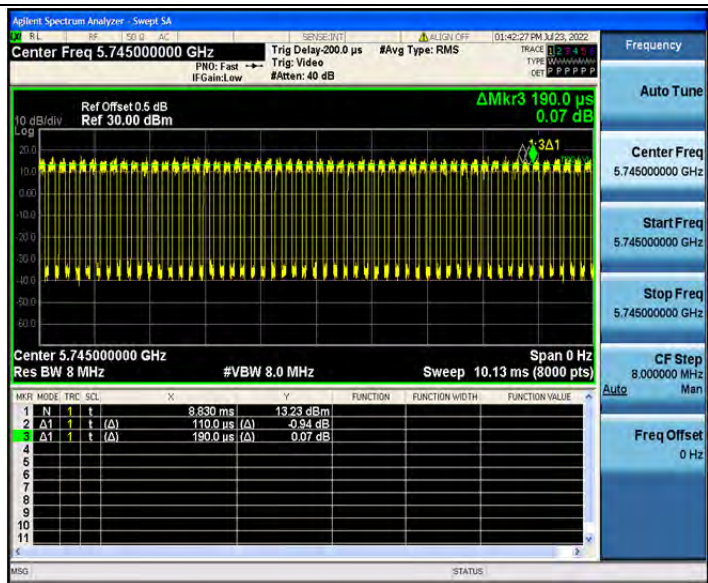
802.11a_5580



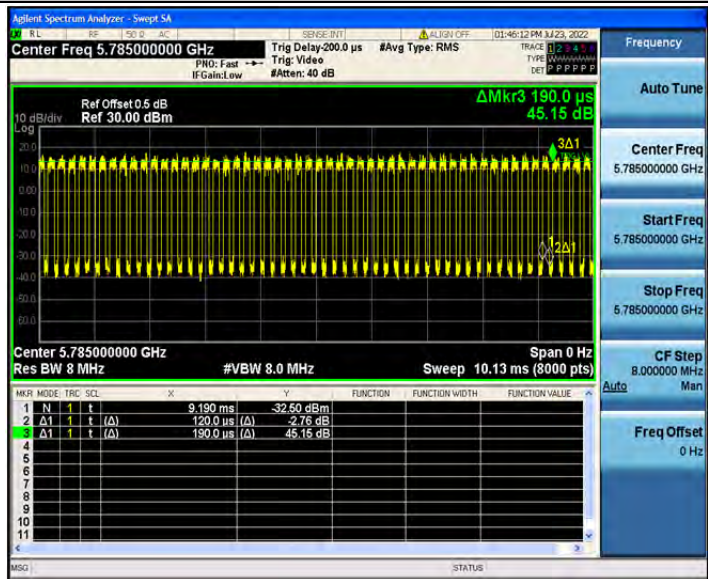
802.11a_5700



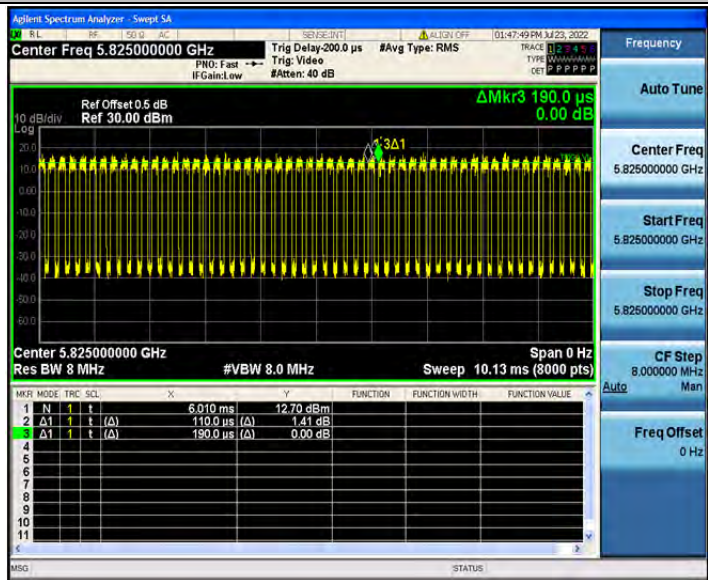
802.11a_5745



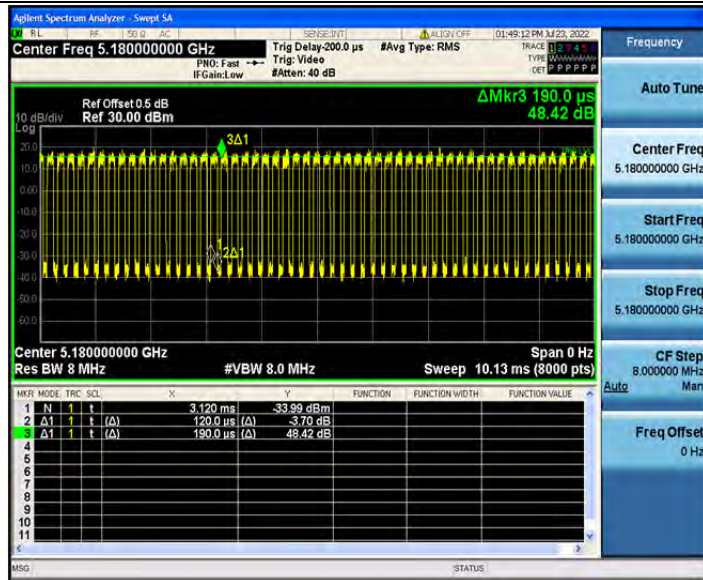
802.11a_5785



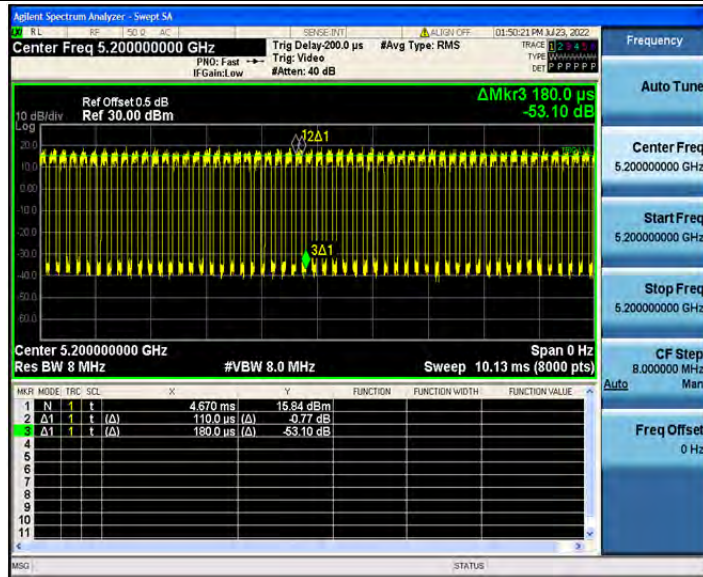
802.11a_5825



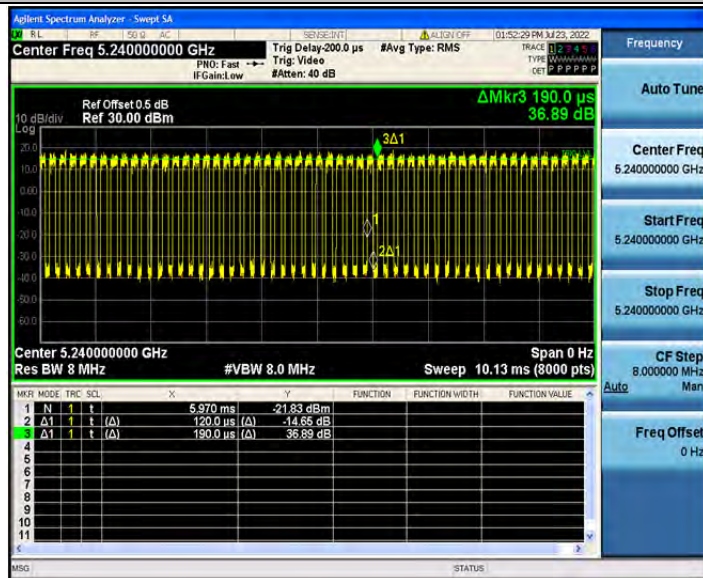
802.11n(HT20)_5180



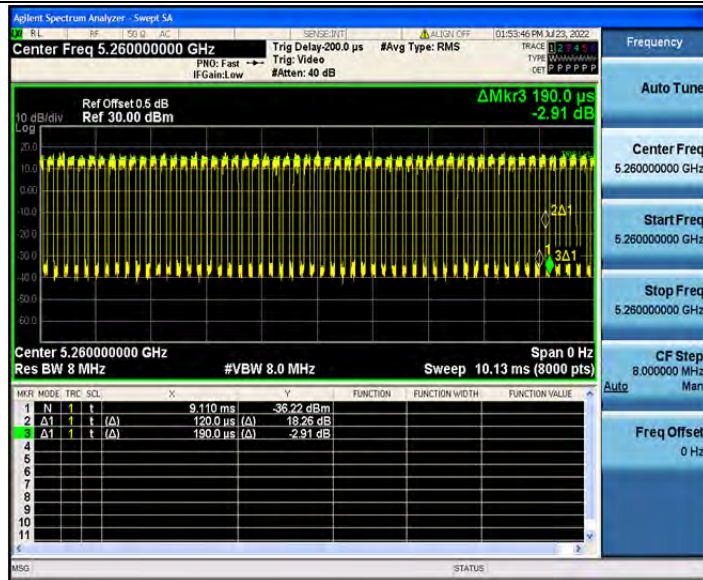
802.11n(HT20)_5200



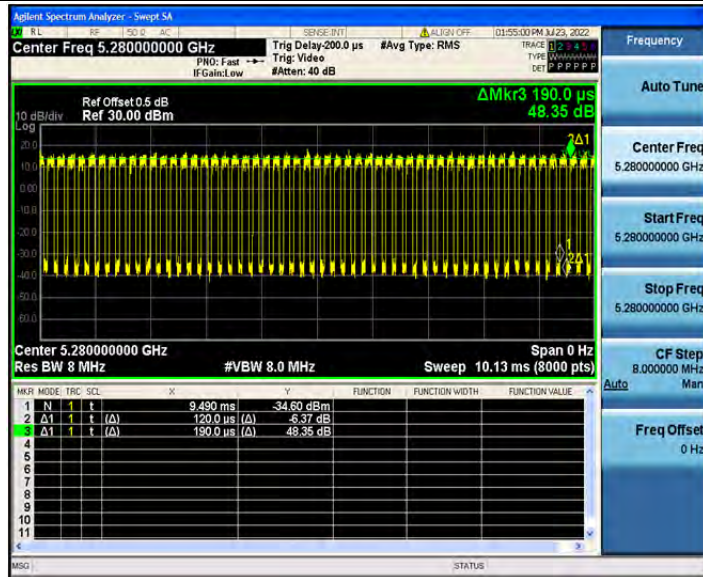
802.11n(HT20)_5240



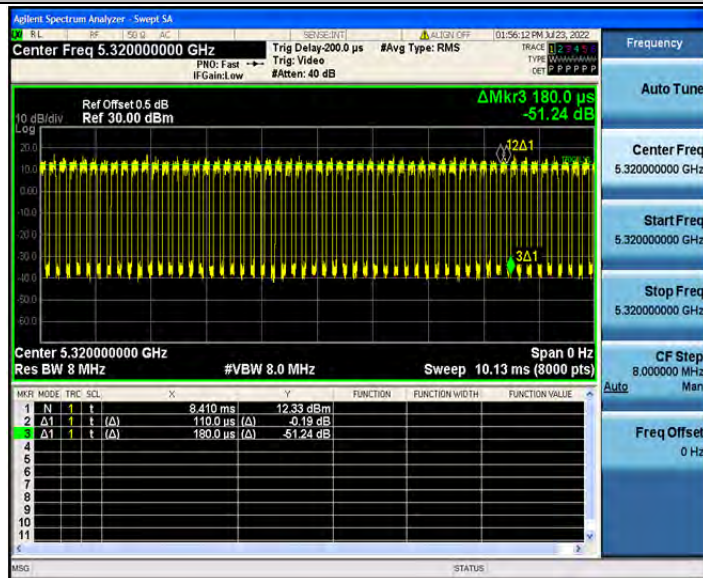
802.11n(HT20)_5260



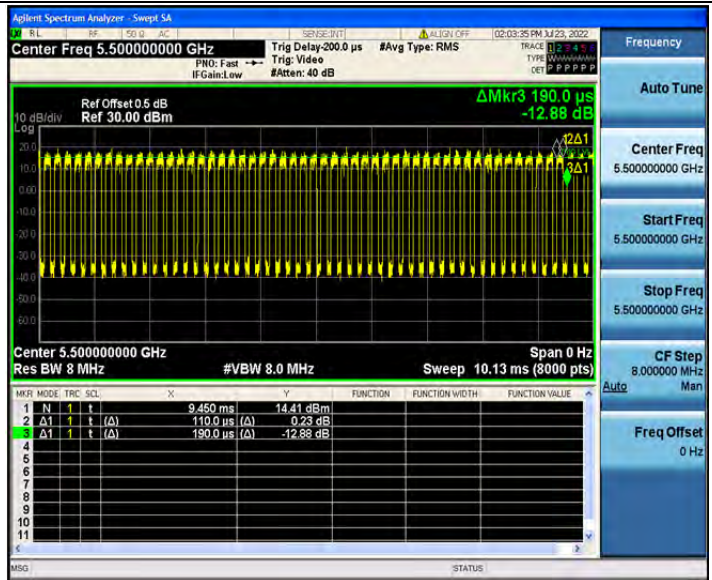
802.11n(HT20)_5280



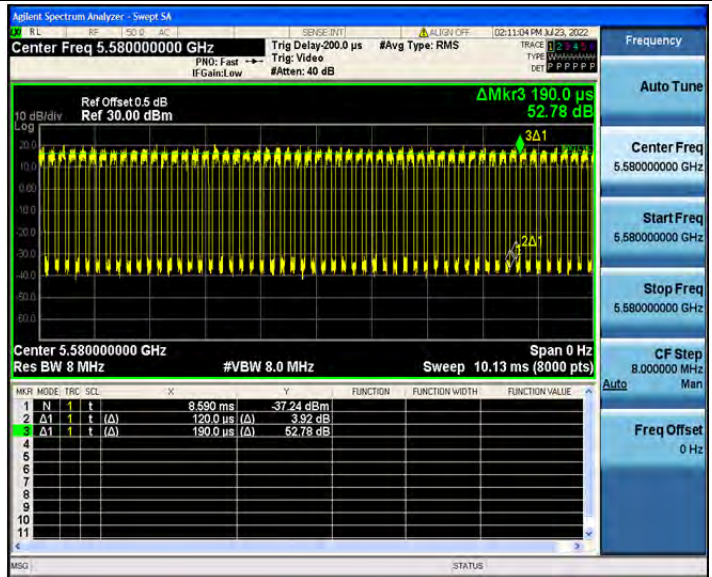
802.11n(HT20)_5320



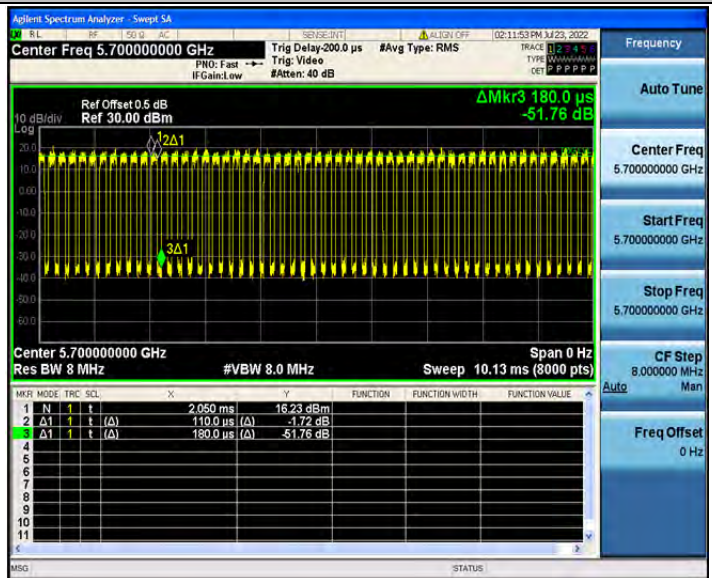
802.11n(HT20)_5500



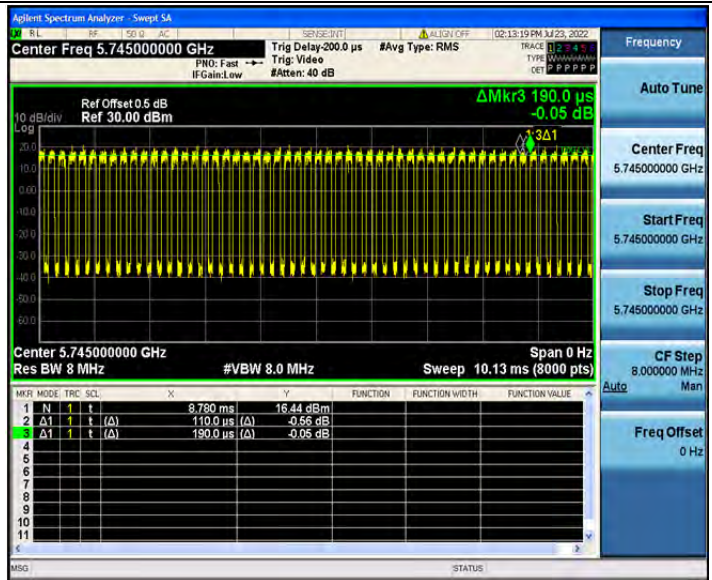
802.11n(HT20)_5580



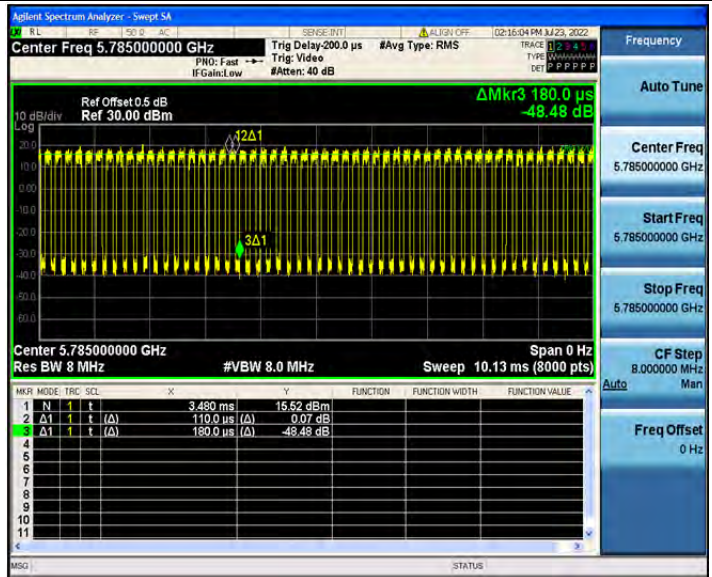
802.11n(HT20)_5700



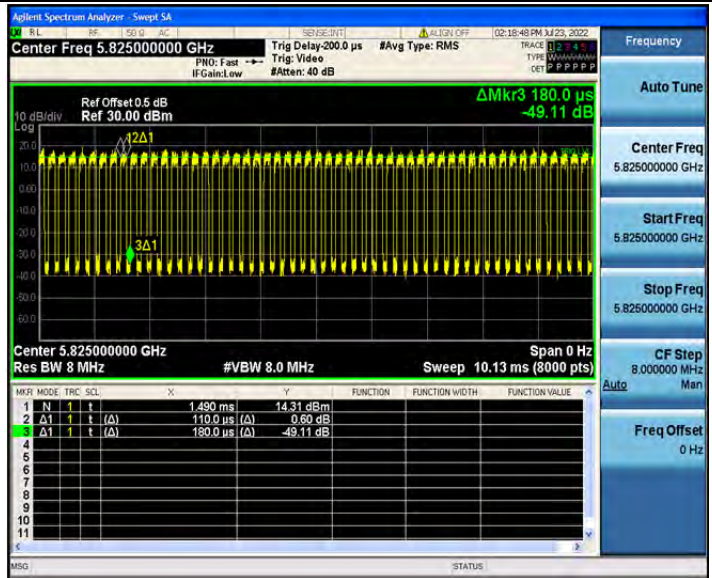
802.11n(HT20)_5745



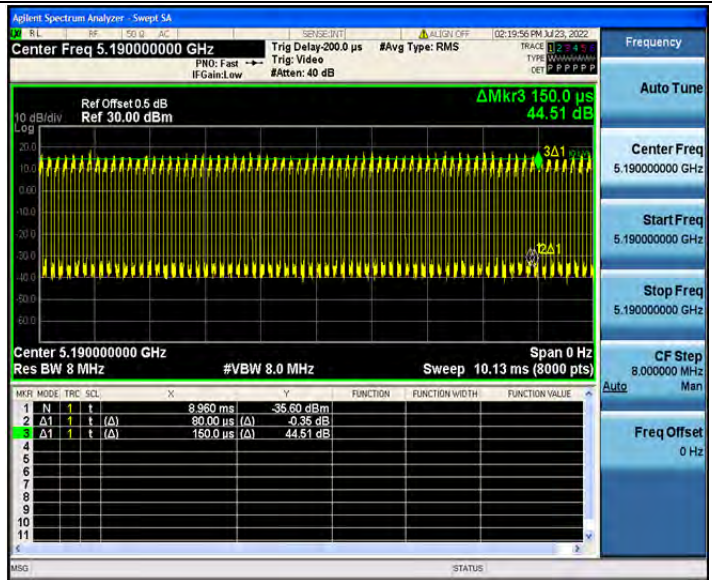
802.11n(HT20)_5785



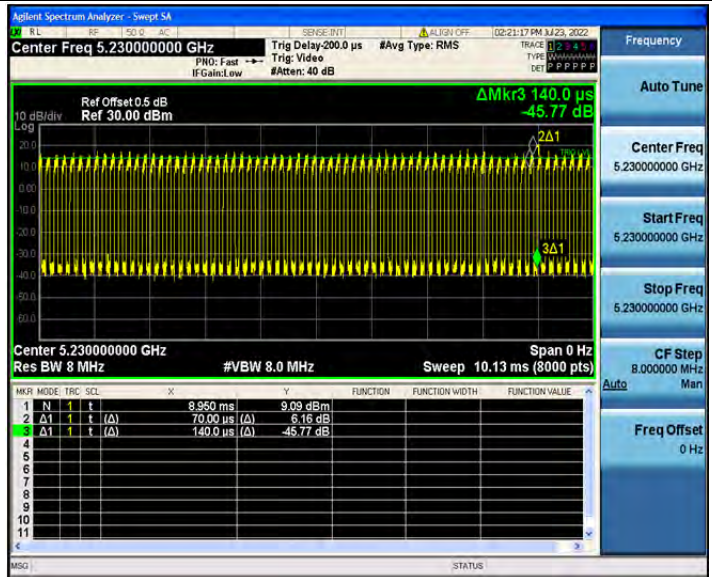
802.11n(HT20)_5825



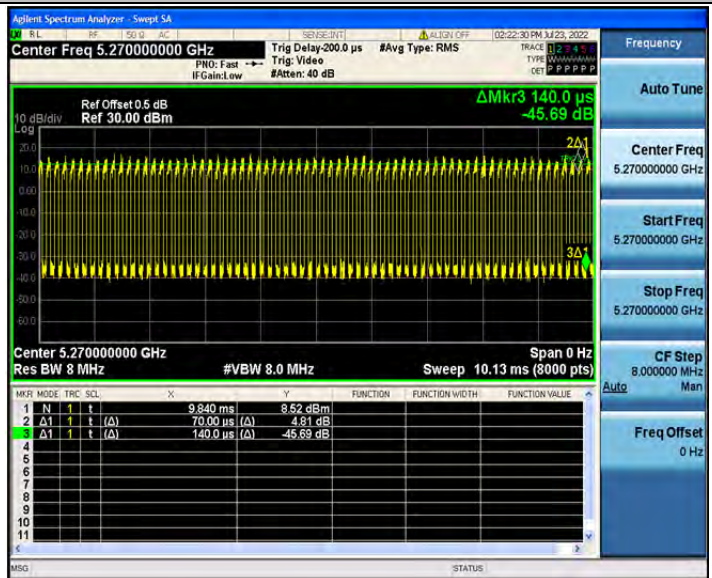
802.11n(HT40)_5190



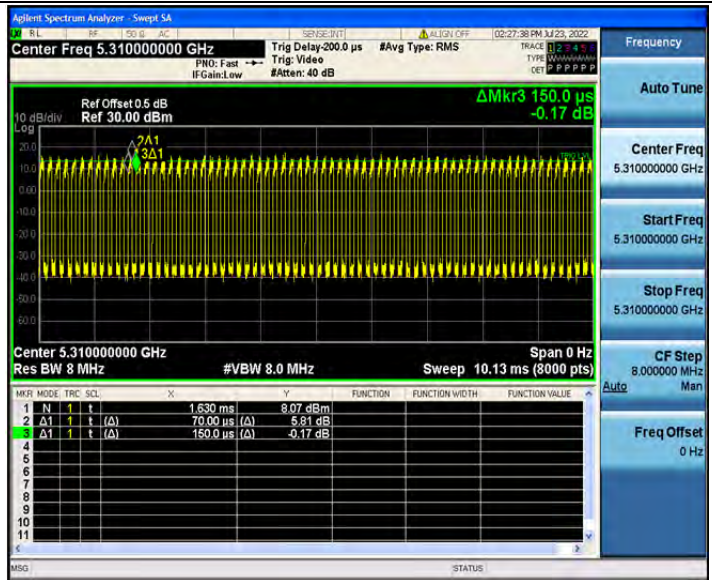
802.11n(HT40)_5230



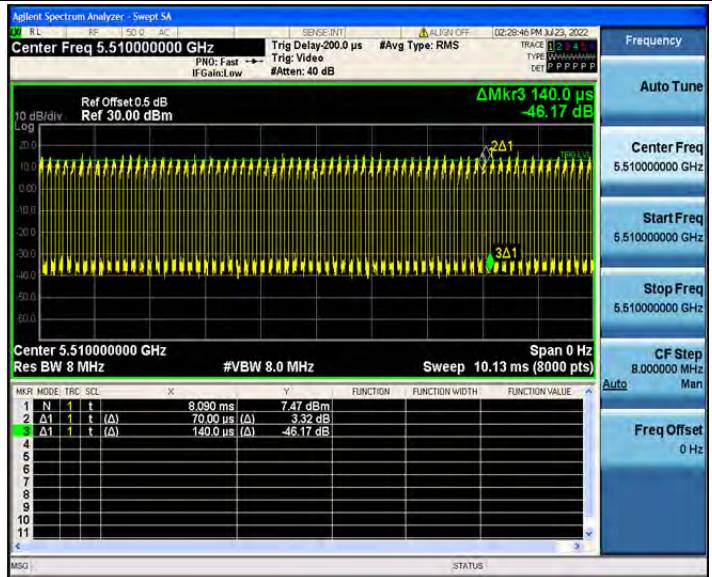
802.11n(HT40)_5270



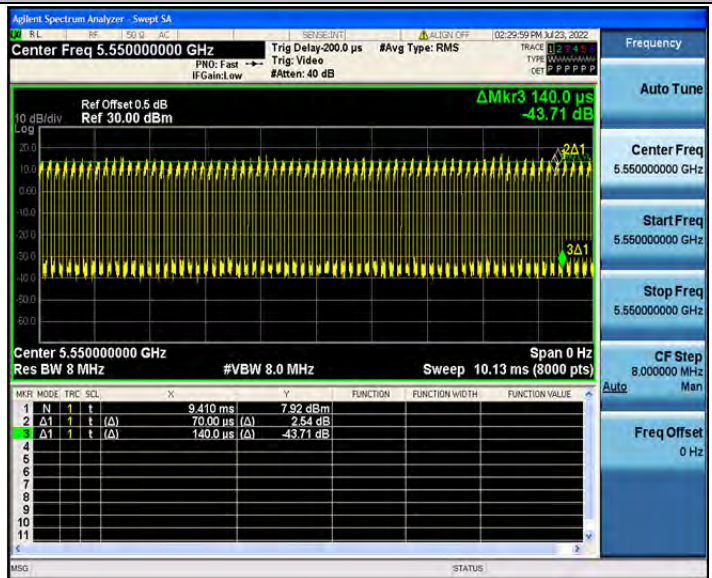
802.11n(HT40)_5310



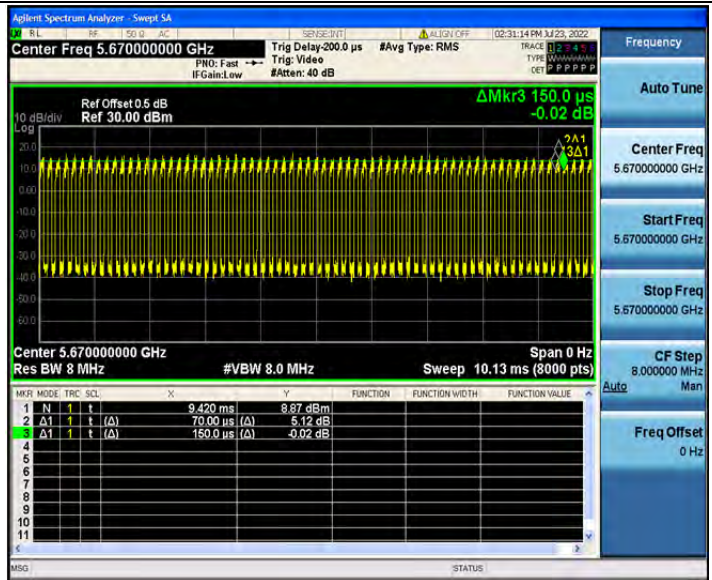
802.11n(HT40)_5510



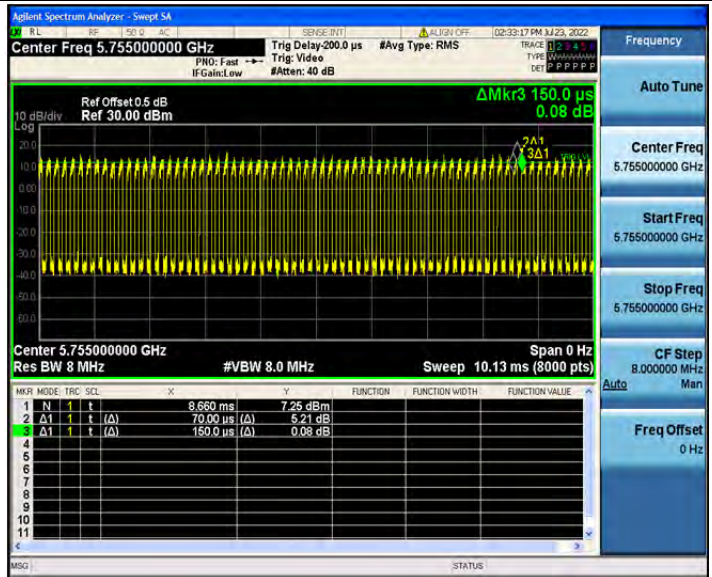
802.11n(HT40)_5550



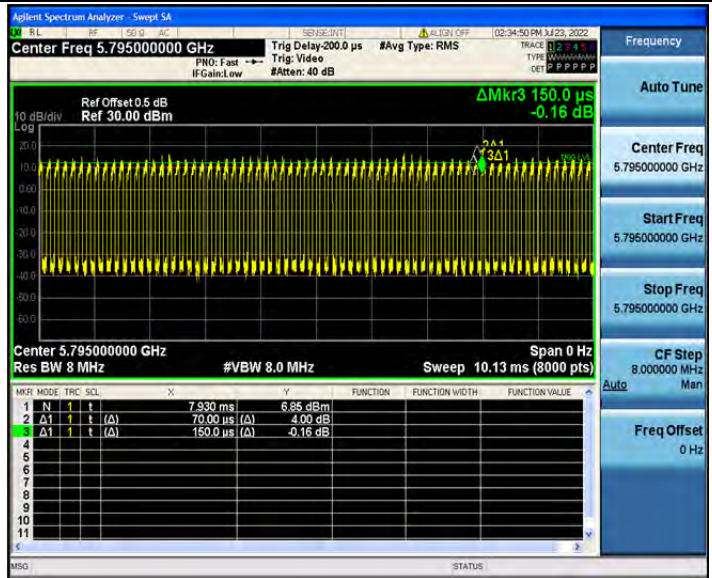
802.11n(HT40)_5670



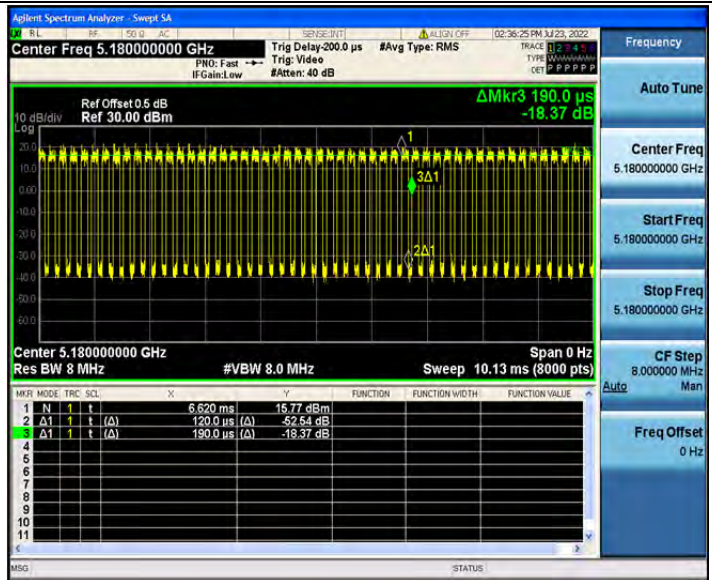
802.11n(HT40)_5755



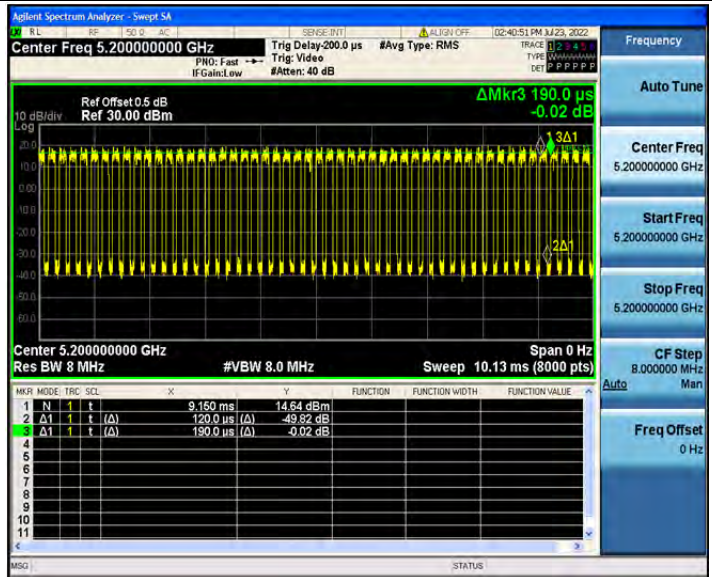
802.11n(HT40)_5795



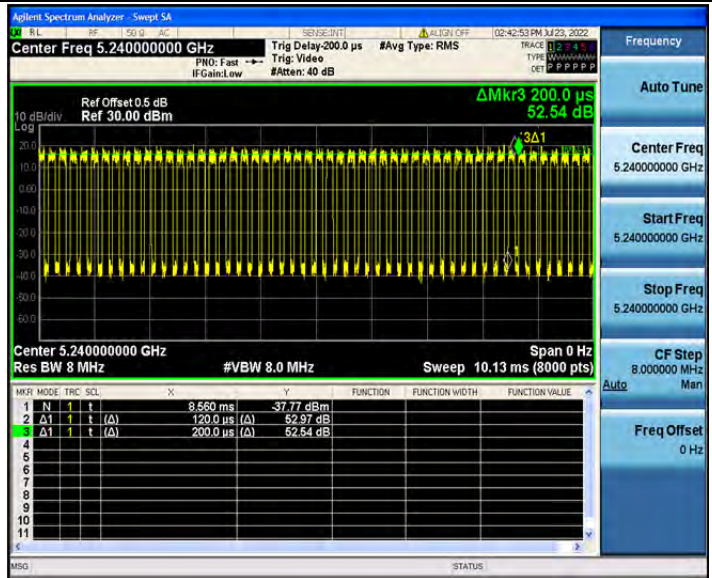
802.11ac(VHT20)_5180



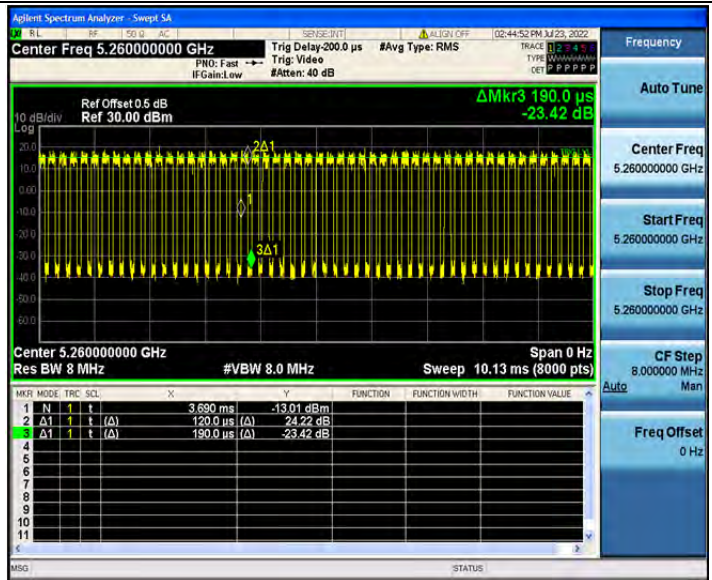
802.11ac(VHT20)_5200



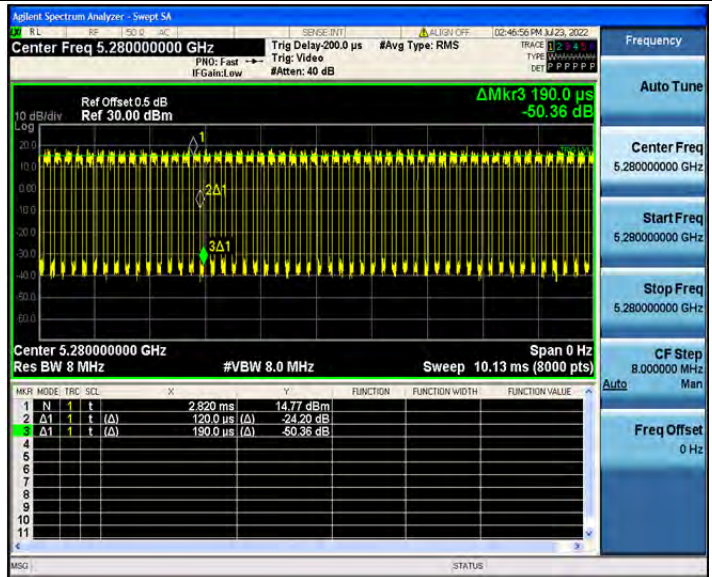
802.11ac(VHT20)_5240



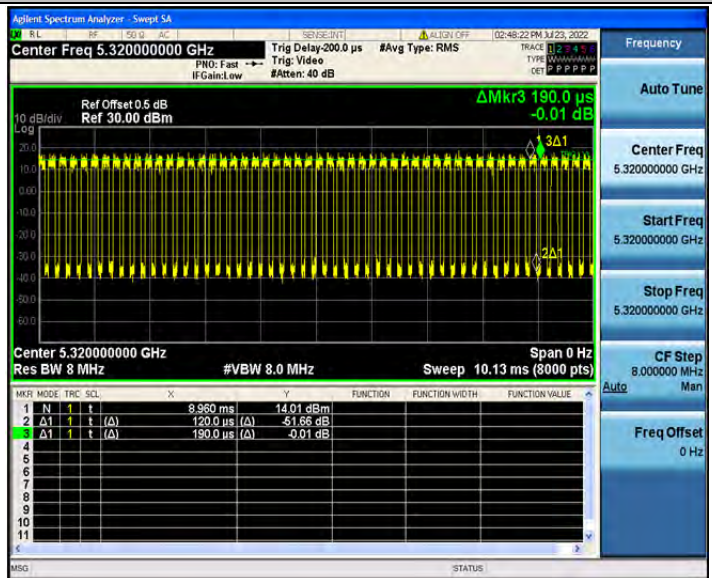
802.11ac(VHT20)_5260



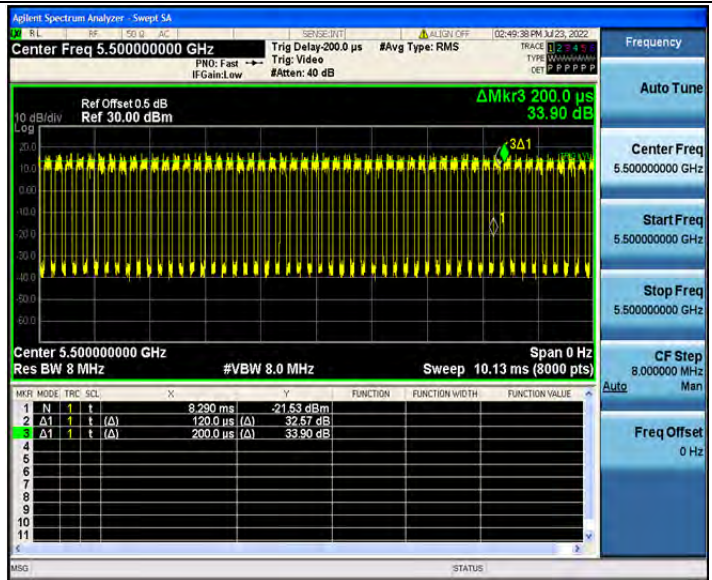
802.11ac(VHT20)_5280



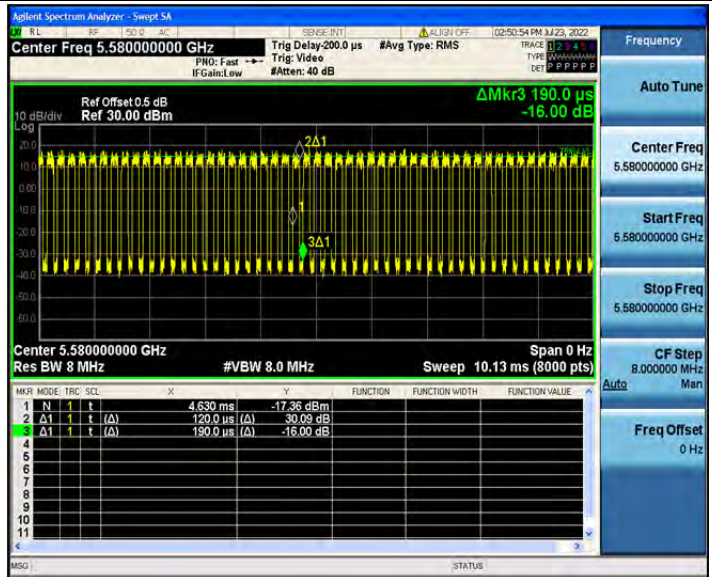
802.11ac(VHT20)_5320



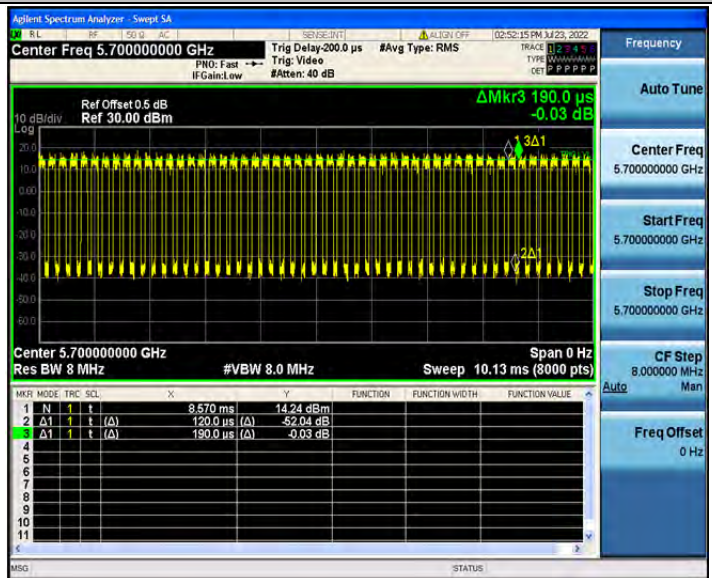
802.11ac(VHT20)_5500



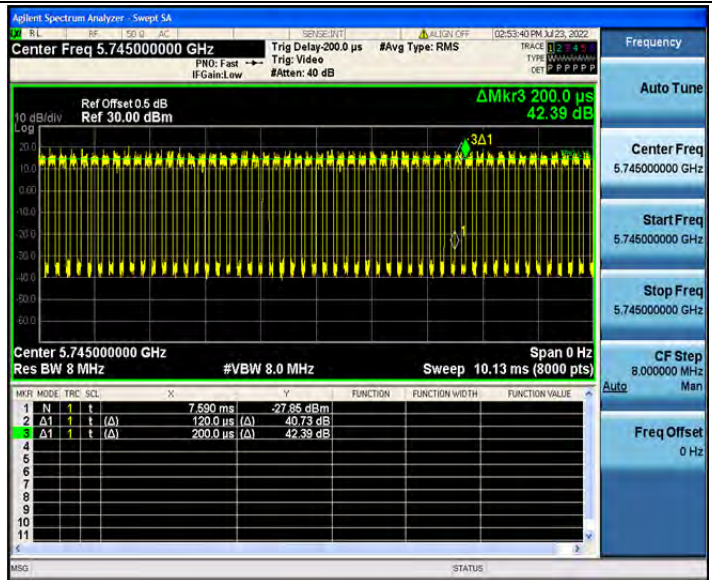
802.11ac(VHT20)_5580



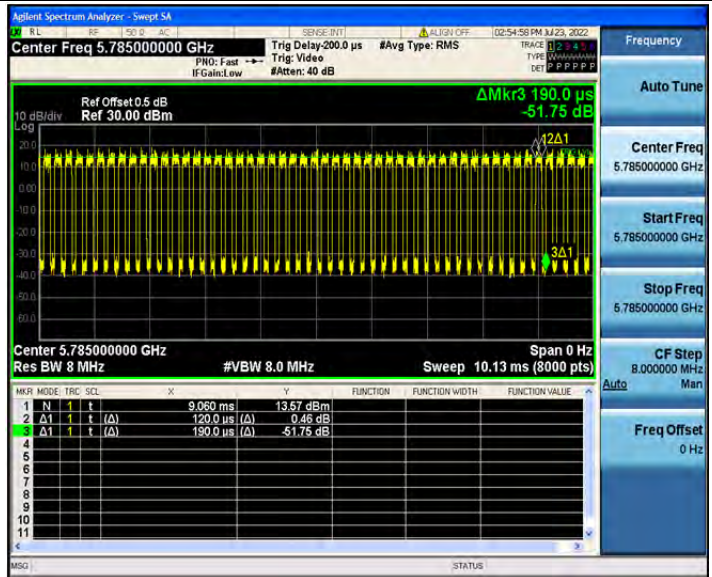
802.11ac(VHT20)_5700



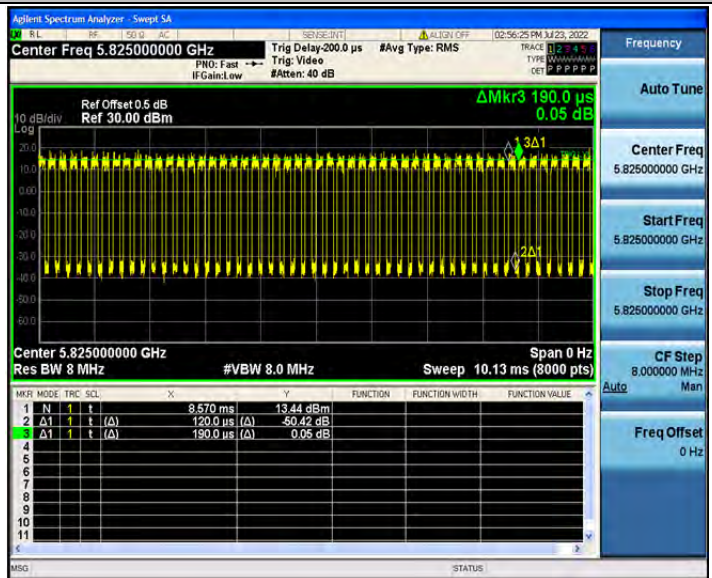
802.11ac(VHT20)_5745



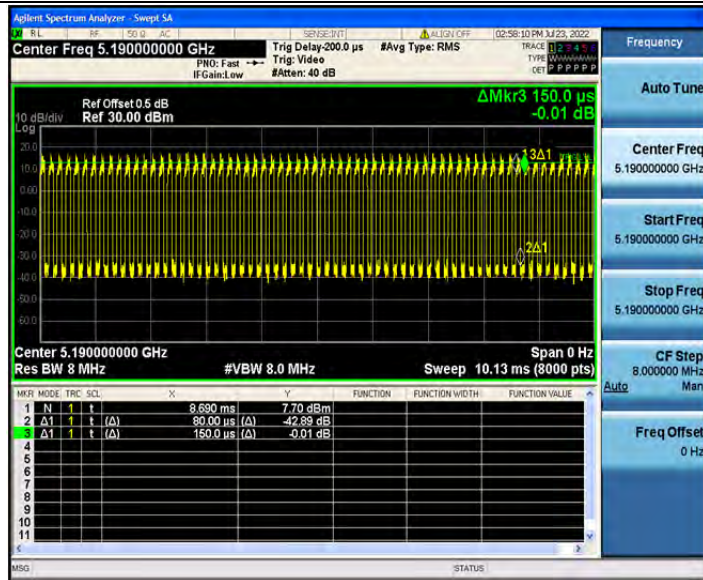
802.11ac(VHT20)_5785



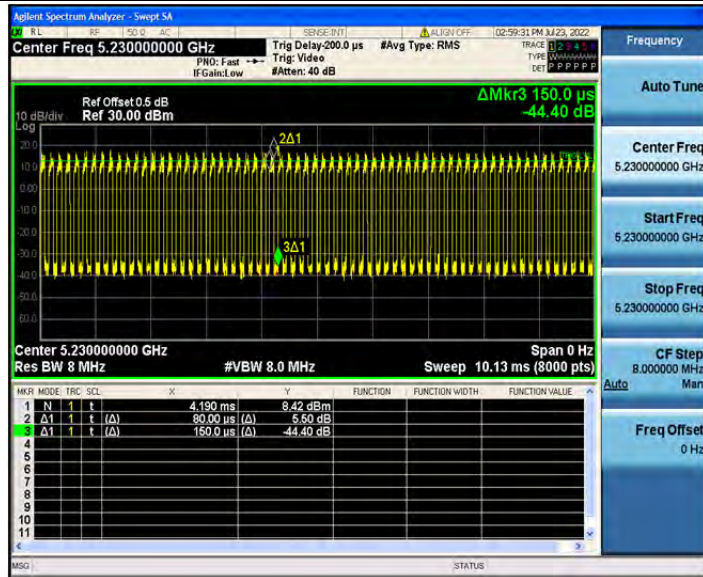
802.11ac(VHT20)_5825



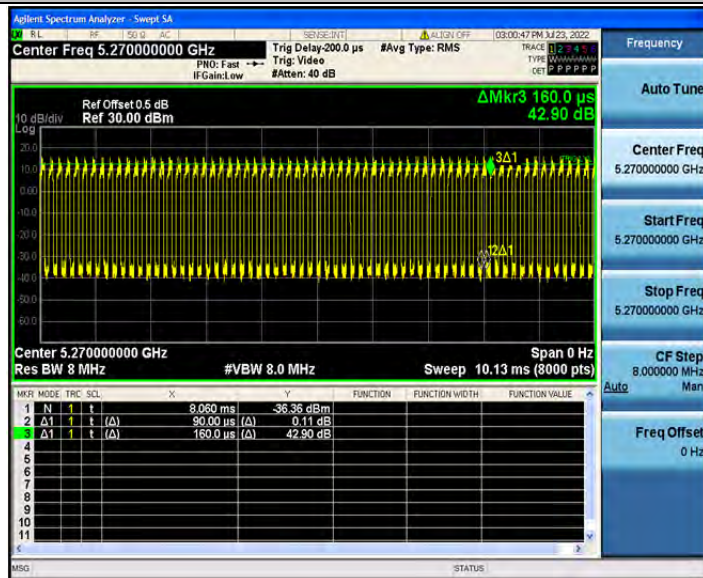
802.11ac(VHT40)_5190



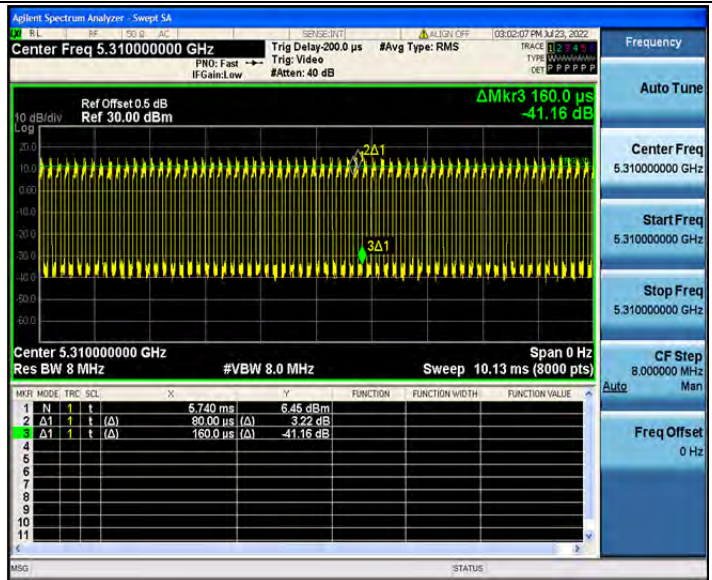
802.11ac(VHT40)_5230



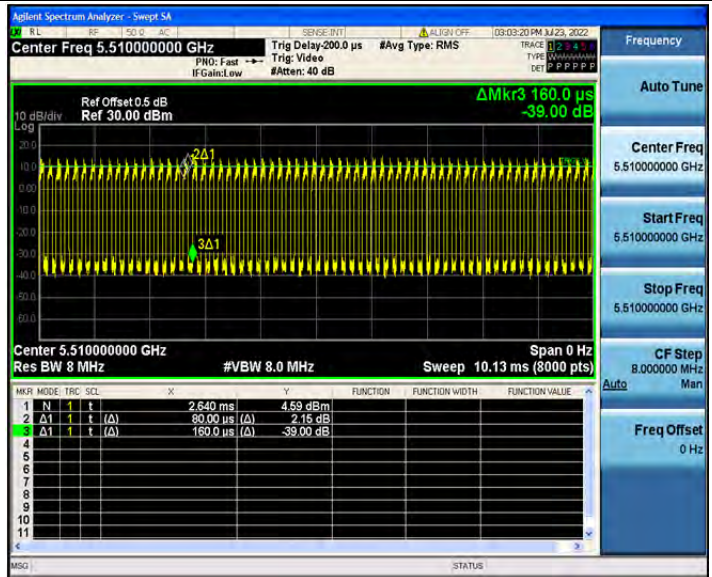
802.11ac(VHT40)_5270



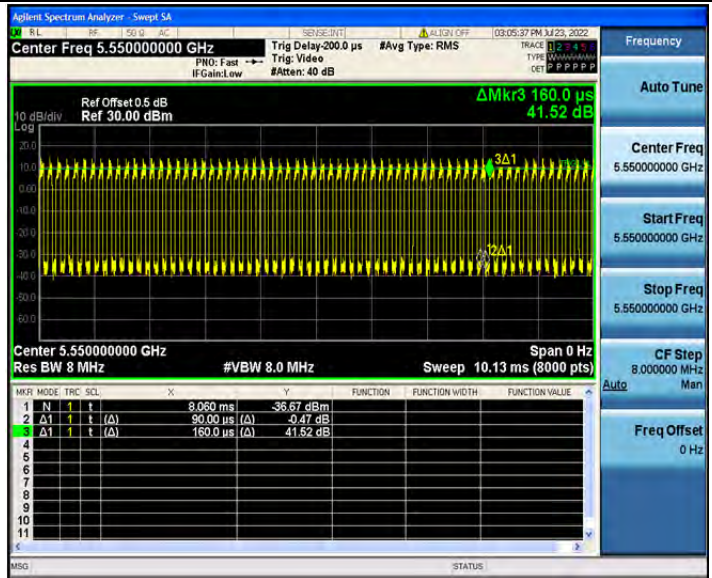
802.11ac(VHT40)_5310



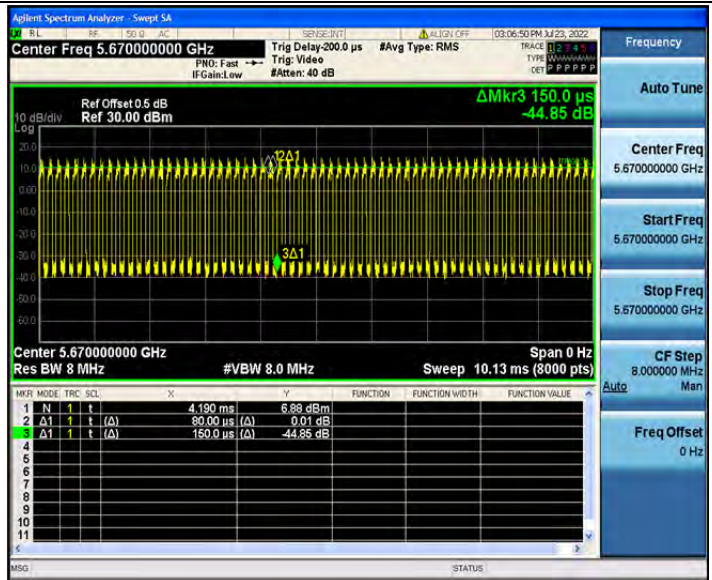
802.11ac(VHT40)_5510



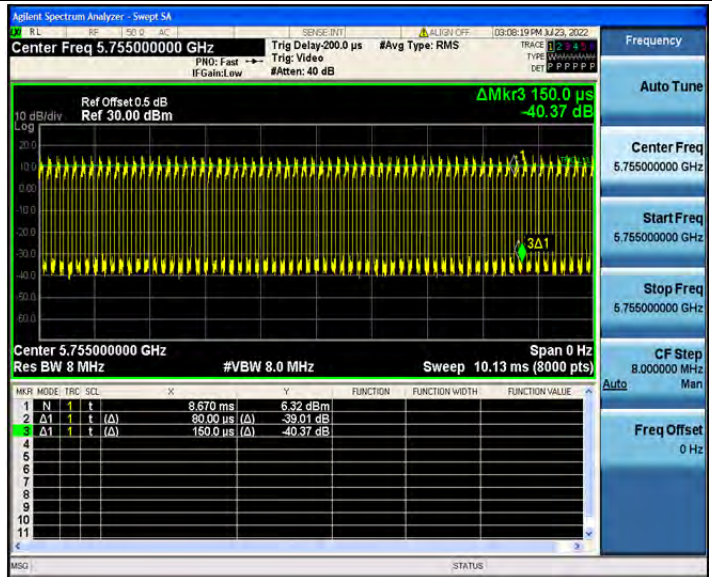
802.11ac(VHT40)_5550



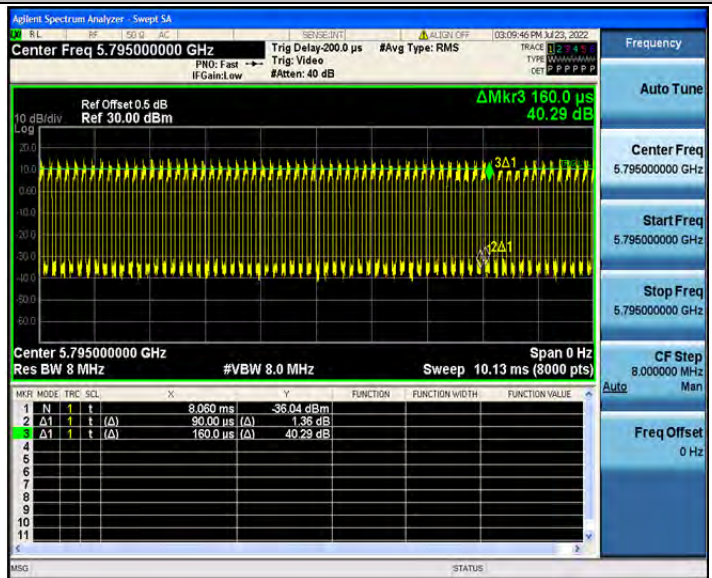
802.11ac(VHT40)_5670



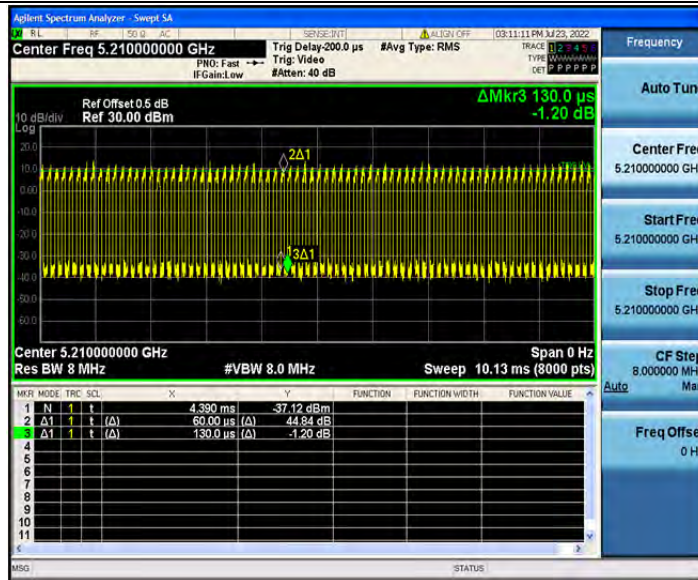
802.11ac(VHT40)_5755



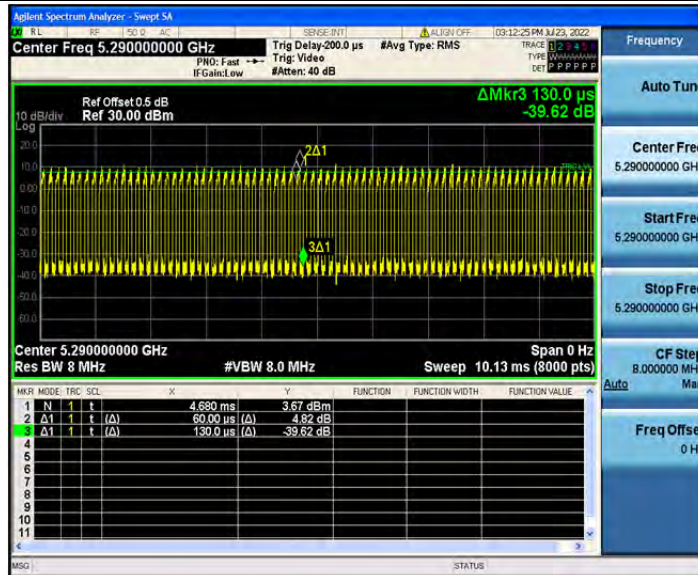
802.11ac(VHT40)_5795



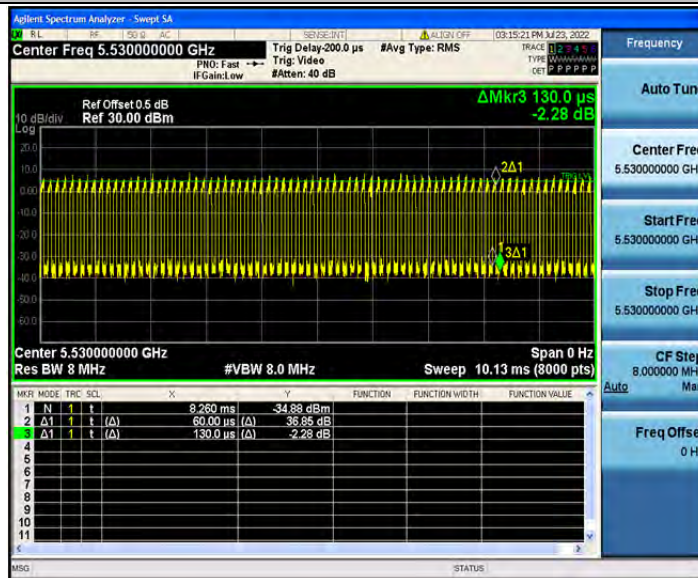
802.11ac(VHT80)_5210



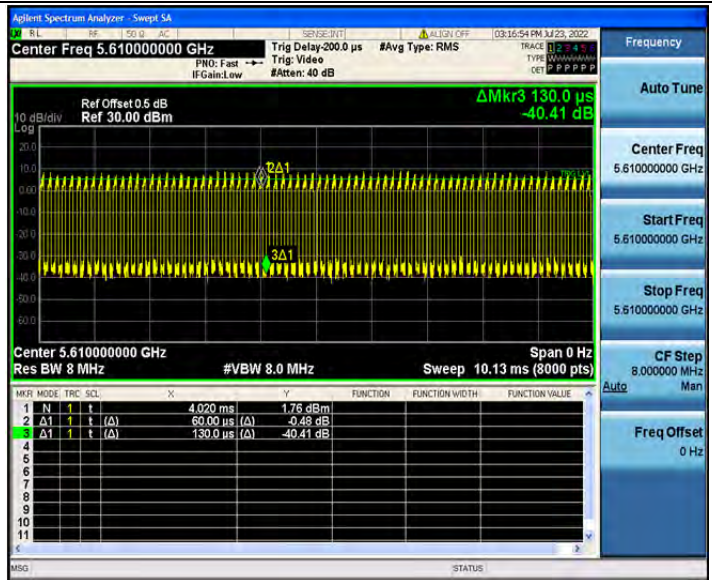
802.11ac(VHT80)_5290



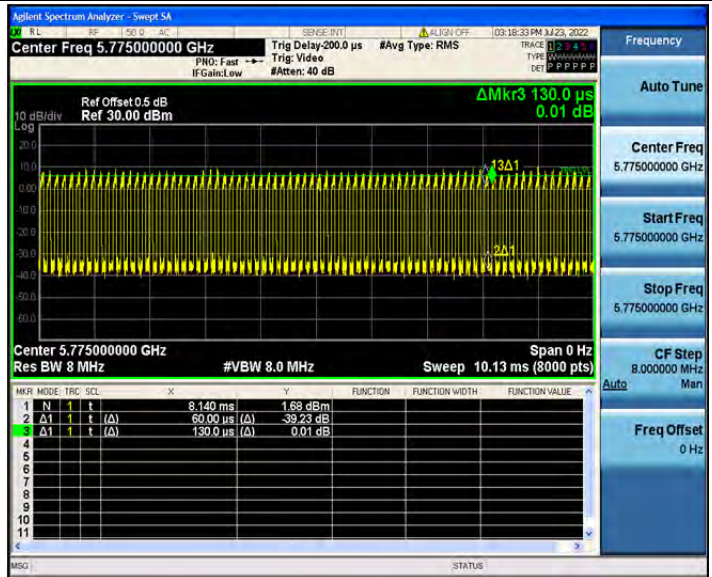
802.11ac(VHT80)_5530



802.11ac(VHT80)_5610



802.11ac(VHT80)_5775



-----End-----