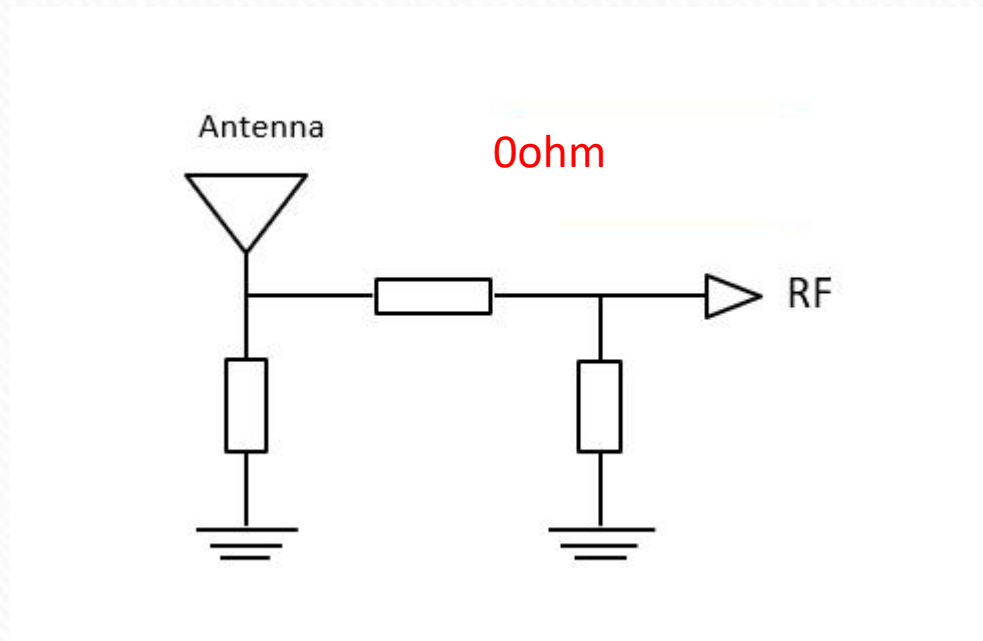
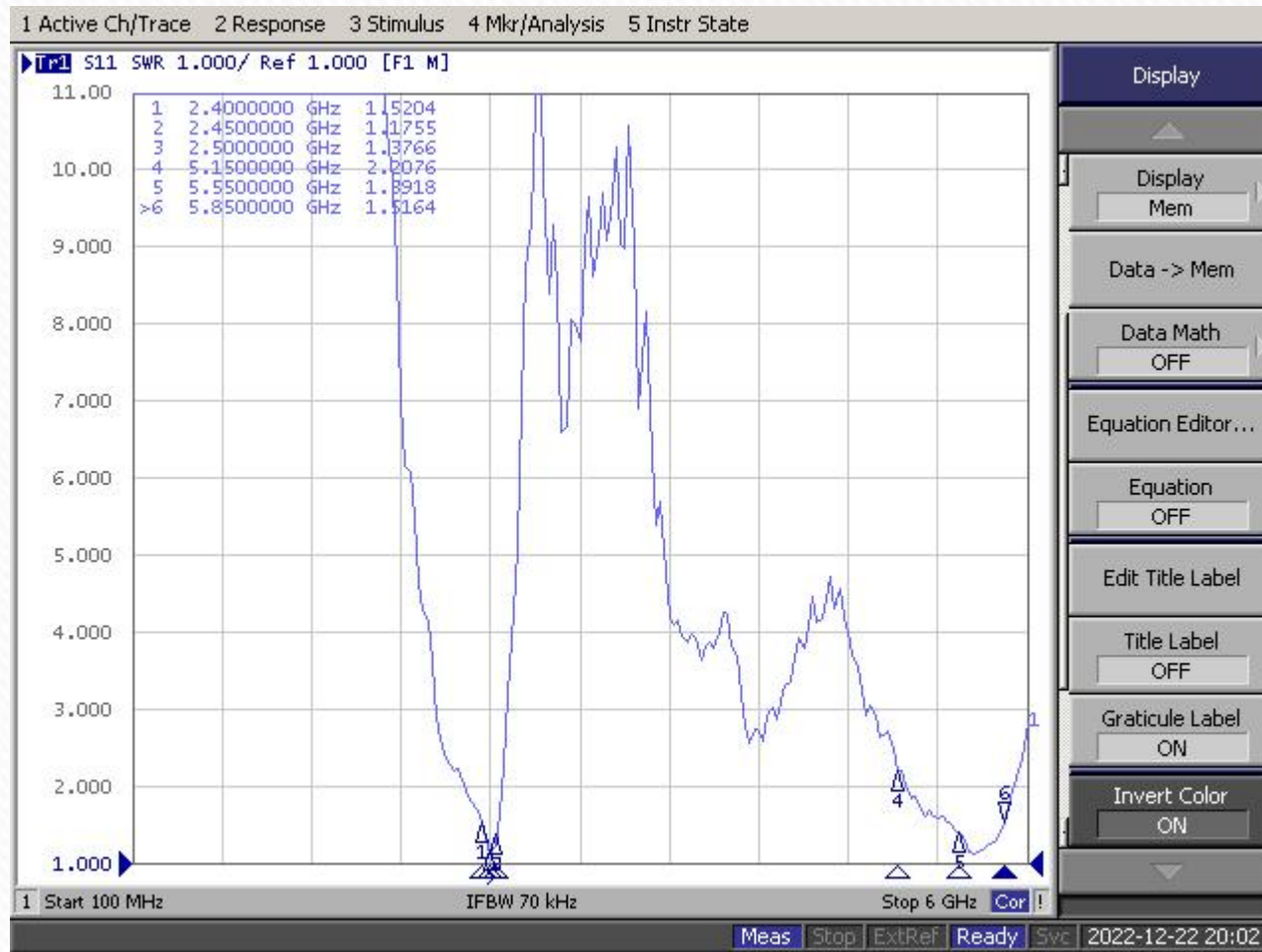


antenna loading coil

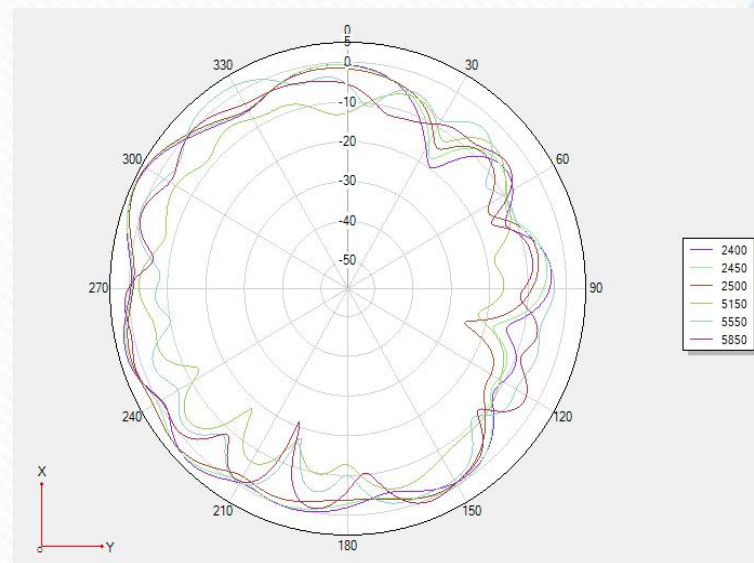
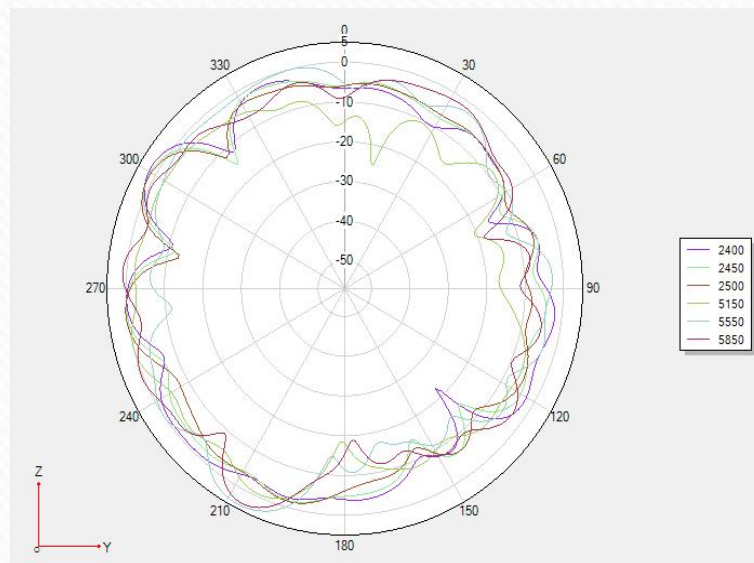
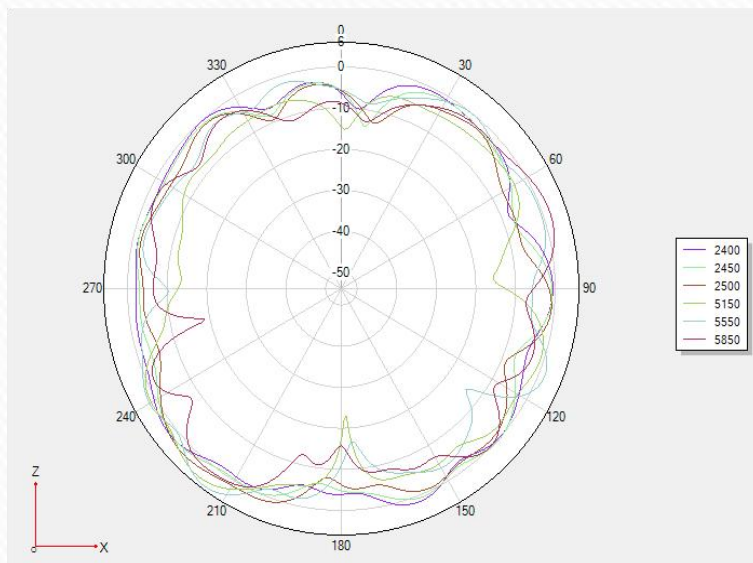
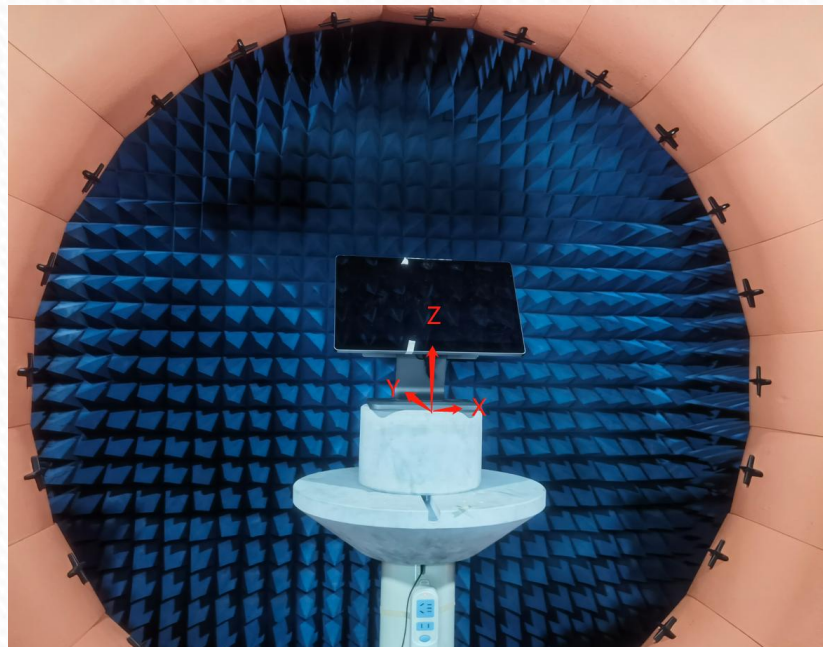


Passive data

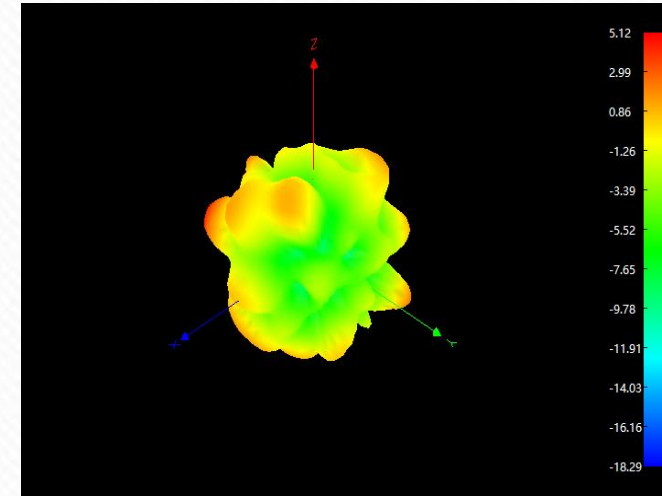
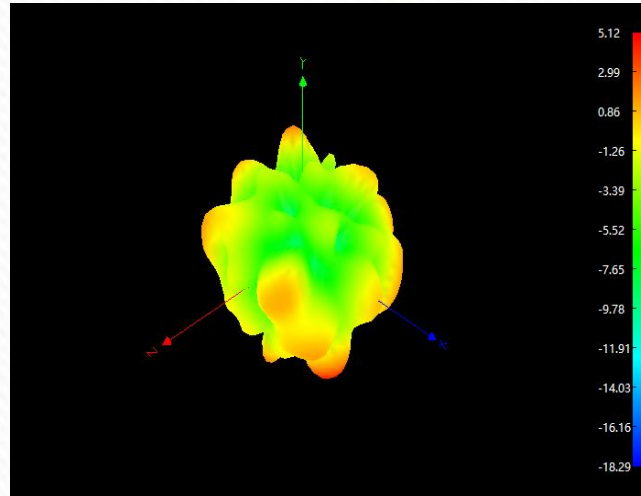
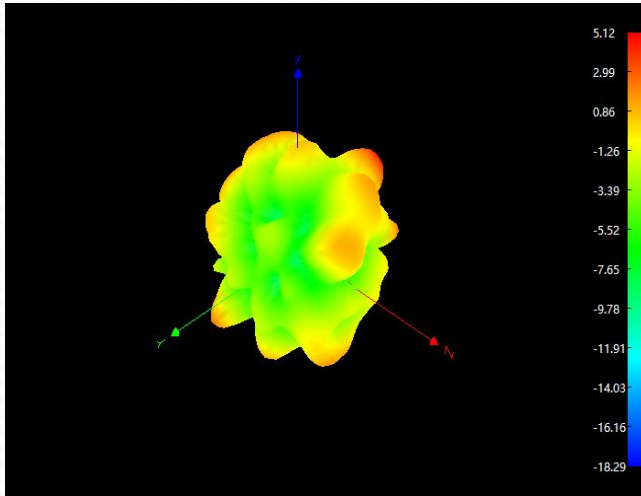


Antenna efficiency and gain:

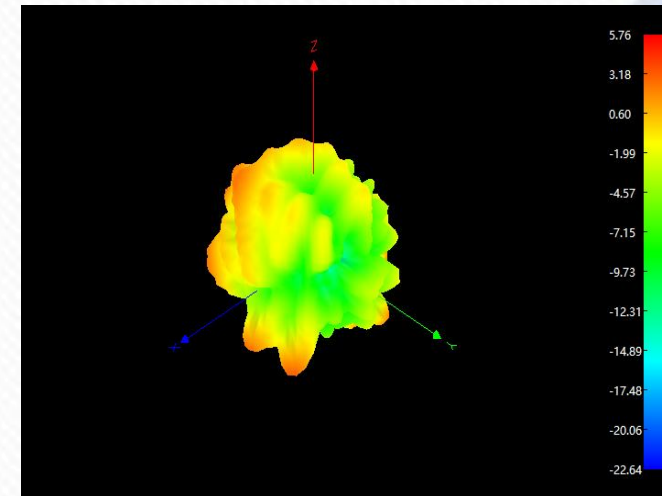
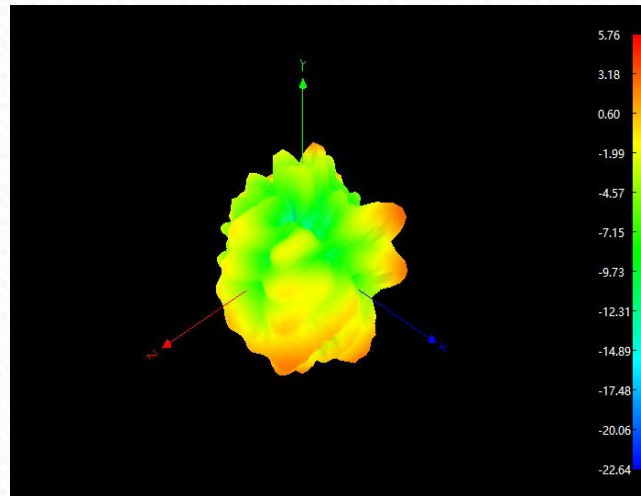
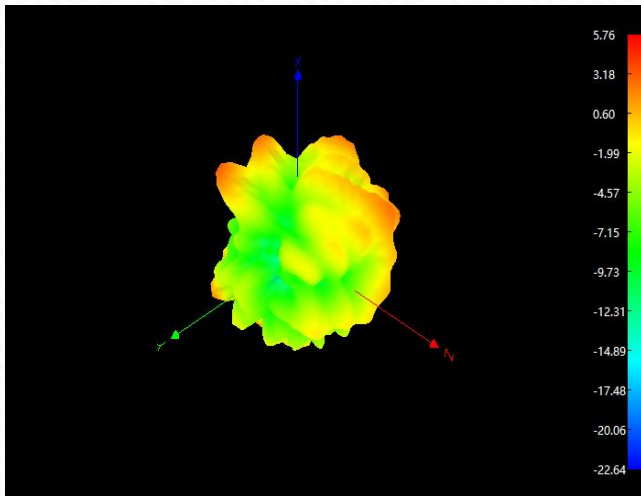
Frequency/MHz	Efficiency / %	MaxGain/dBi	AvgGain/dBi	Frequency/MHz	Efficiency / %	MaxGain/dBi	AvgGain/dBi
2400	50.88	5.11	-2.3	5150	28.48	5.88	-4.38
2410	47.72	4.85	-2.54	5200	34.56	6.8	-3.71
2420	49.68	5.07	-2.39	5250	37.81	7.15	-3.39
2430	48.49	5.08	-2.48	5300	39.75	7.03	-3.21
2440	48.23	5.12	-2.5	5350	45.46	7.16	-2.72
2450	47.46	5.12	-2.56	5400	46.2	6.92	-2.66
2460	45.21	4.89	-2.74	5450	45.46	6.46	-2.72
2470	46.95	5.05	-2.6	5500	49.94	6.2	-2.37
2480	44.84	4.79	-2.77	5550	52.39	5.76	-2.19
2490	43.17	4.73	-2.91	5600	48.36	4.82	-2.49
2500	40.98	4.55	-3.1	5650	45.46	3.98	-2.72
				5700	47.21	3.38	-2.58
				5750	47.21	3.69	-2.58
				5800	45.46	3.83	-2.72
				5850	48.75	4.35	-2.46



3D For 2450MHz



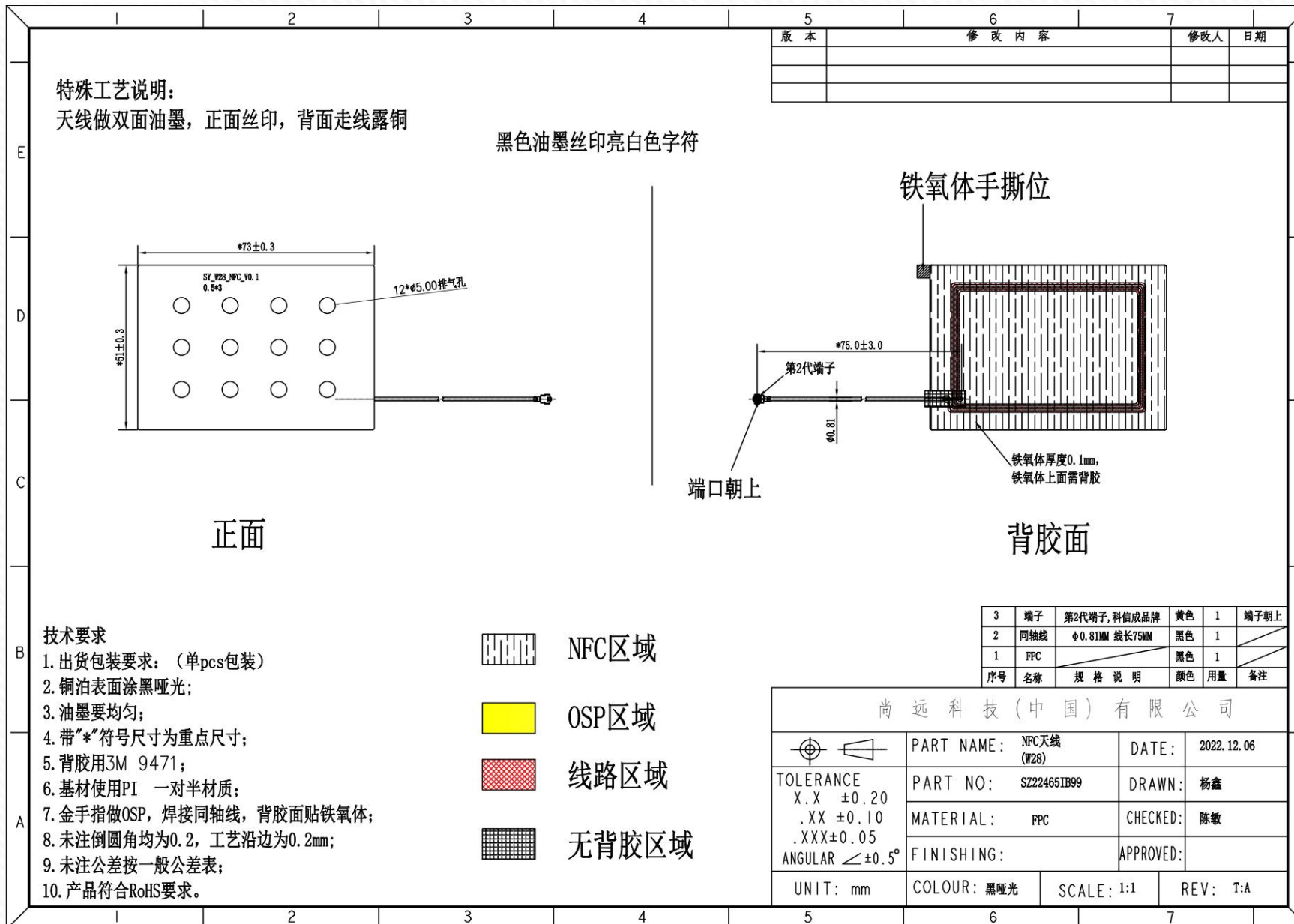
3D For 5550MHz

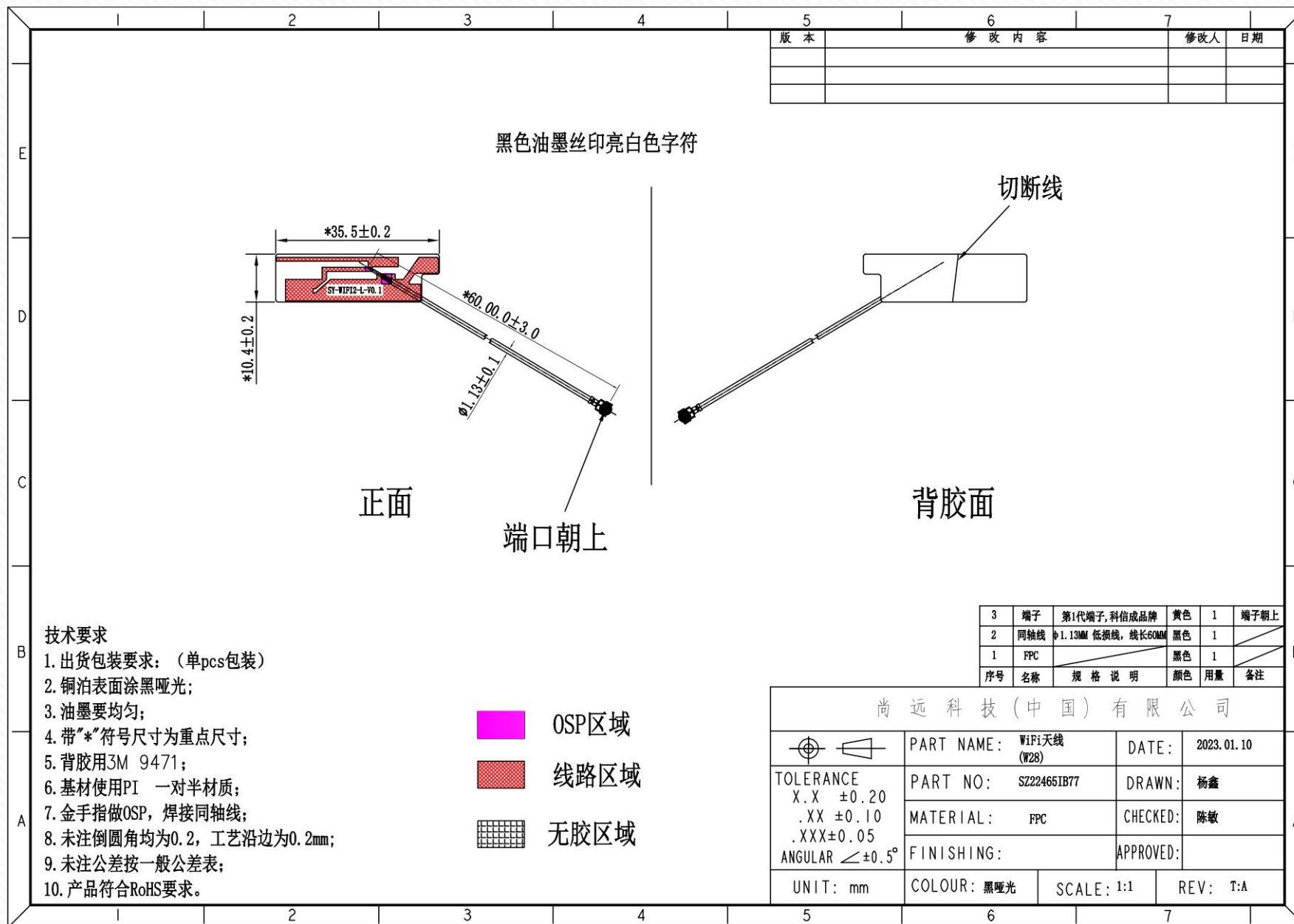


Active test data

Item	Measurement	Band	Channel	Frequency	Total
1	TRP	WIFI_B (11M)	1	2412	12.02
2	TRP	WIFI_B (11M)	6	2437	13
3	TRP	WIFI_B (11M)	11	2462	12.53
4	TIS(EIRP)	WIFI_B (11M)	11	2462	-76.49
5	TRP	WIFI_G (54M)	1	2412	10.59
6	TRP	WIFI_G (54M)	6	2437	11
7	TRP	WIFI_G (54M)	11	2462	11.49
8	TIS(EIRP)	WIFI_G (54M)	11	2462	-59.35
9	TRP	WIFI_N_ISM (65M)	1	2412	9.04
10	TRP	WIFI_N_ISM (65M)	6	2437	9.55
11	TRP	WIFI_N_ISM (65M)	11	2462	10.03
12	TIS(EIRP)	WIFI_N_ISM (65M)	11	2462	-58.74
13	TRP	WIFI_A (54M)	36	5180	9.44
14	TRP	WIFI_A (54M)	149	5745	9.49
15	TRP	WIFI_A (54M)	165	5825	8.9
16	TIS(EIRP)	WIFI_A (54M)	165	5825	-72.37
17	TRP	WIFI_N_UNII (65M)	36	5180	10.03
18	TRP	WIFI_N_UNII (65M)	149	5745	10.12
19	TRP	WIFI_N_UNII (65M)	165	5825	10.36
20	TIS(EIRP)	WIFI_N_UNII (65M)	165	5825	-71.28







Thank You

SUNNYWAY TECHNOLOGY(CHINA)

Floor 6, Building 5, Nam Tai Inno Park, Guangming District, Shenzhen

Model: W28



扫码关注微信公众号



扫码关注官网