
Quick Start Guide

KingSlim D1 Pro Dash Cam

V2.0



30017000079

Please read this manual before operating your car dash camera,
and keep it for future reference.

KINGSLIM

CONTACT US

For any inquiries about KingSlim products, please feel free to contact us. We will respond within 24 hours.

Tel: 888-811-1140 (US)

Email: cs@kingslim.net

Web: www.kingslim.net

FCC Statement

Changes or modifications not expressly approved by the party responsible for compliance could void the user's authority to operate the equipment. This equipment has been tested and found to comply with the limits for a Class B digital device, pursuant to Part 15 of the FCC Rules. These limits are designed to provide reasonable protection against harmful interference in a residential installation. This equipment generates uses and can radiate radio frequency energy and, if not installed and used in accordance with the instructions, may cause harmful interference to radio communications. However, there is no guarantee that interference will not occur in a particular installation. If this equipment does cause harmful interference to radio or television reception, which can be determined by turning the equipment off and on, the user is encouraged to try to correct the interference by one or more of the following measures:

- Reorient or relocate the receiving antenna.
- Increase the separation between the equipment and receiver. -- Connect the equipment into an outlet on a circuit different from that to which the receiver is connected.
- Consult the dealer or an experienced radio/TV technician for help

This device complies with part 15 of the FCC rules. Operation is subject to the following two conditions (1) this device may not cause harmful interference, and (2) this device must accept any interference received, including interference that may cause undesired operation.

This equipment complies with FCC radiation exposure limits set forth for an uncontrolled environment. This equipment should be installed and operated with minimum distance 20cm between the radiator & your body.

CONTENTS

WHAT'S IN THE BOX	1
CAMERA OVERVIEW	2
INSTALLATION	3
FORMATTING THE MEMORY CARD	7
DOWNLOAD THE APP AND GPS PLAYER	8
USE THE "ROADCAM" APP	9
USER MANUAL	11

WHAT'S IN THE BOX



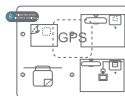
D1 Pro Dash Cam * 1



Car Charger with
External GPS * 1



Bracket * 1



GPS Electrostatic
Stickers * 2



Car Crowbar * 1

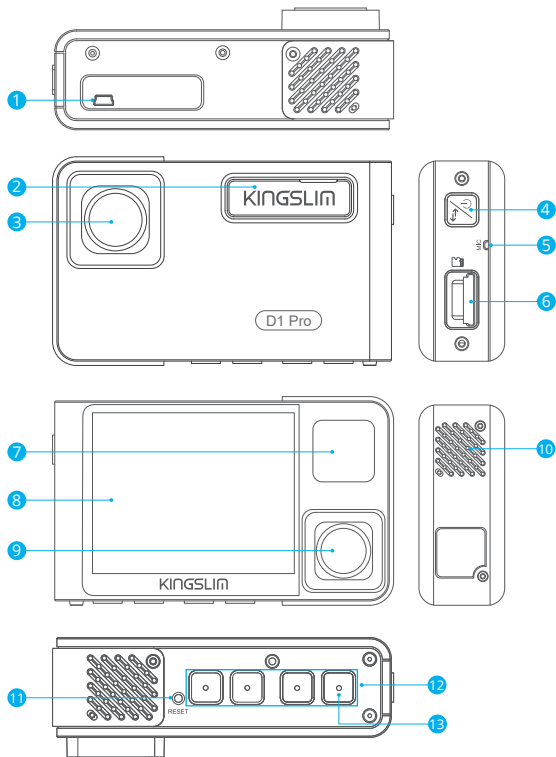


Cable Clips * 5



Quick Start Guide * 1

CAMERA OVERVIEW



- 1 Mini USB Power Port
- 2 Bracket Slot
- 3 Front Camera
- 4 Power Button
- 5 Microphone
- 6 Memory Card Slot
- 7 IR LEDs & Indicator light
- 8 Screen
- 9 Inside Camera
- 10 Speaker
- 11 Reset
- 12 Set Buttons
- 13 Wifi Button

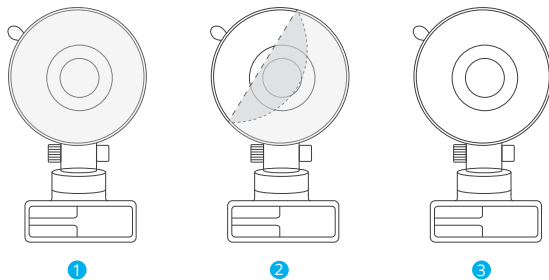
Note: Short pressing the power button also can switch images of the front or inside showed alone or front and inside displayed simultaneously on-screen.

INSTALLATION

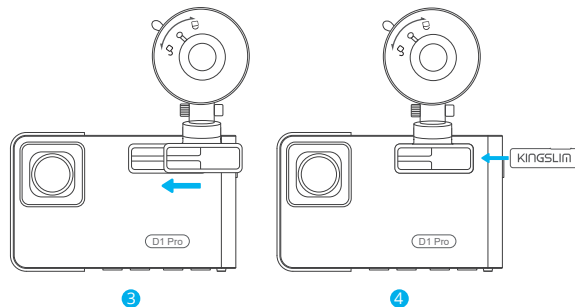
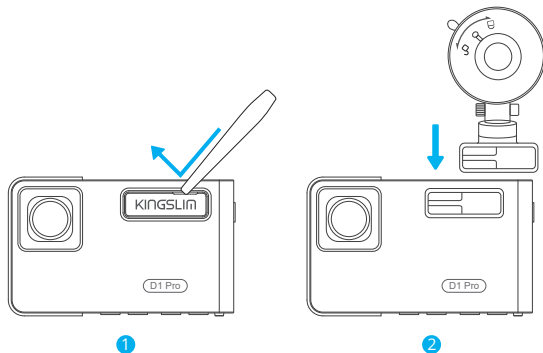
1. Insert the memory card.



2. Take the film off from the suction cup.



3. Using the crowbar to take off the nameplate on the slot, then insert the bracket into the slot of the camera.



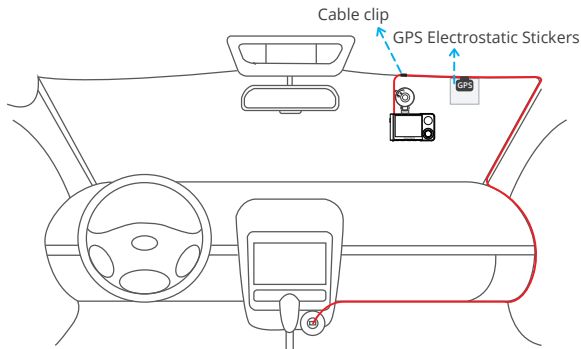
4. Firstly clean the windshield with a dry cloth, secondly put and press the suction cup on the windshield to make sure there is no air inside the suction cup, last rotate to fix the bracket. (when installing, please don't let the rearview mirror block the camera's infrared light.)

5. Adjust the viewing angle of the dash cam to get a good view.

6. Connect the car charger to the car cigarette lighter, then insert the USB end of the charger into the USB power port of the dash camera, please refer to the below picture.

7. Attach the electrostatic sticker of GPS to the top edge of the windshield, and then fix the GPS module on the electrostatic sticker, please refer to the below picture.

8. Fix the cable with a cable clip at the place where the icon is (please refer to the below picture), then use the yellow crowbar to hide the cable.



Note:

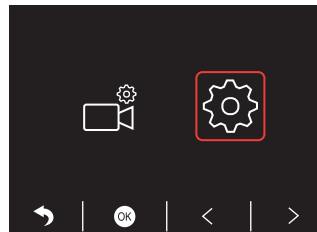
- ① After powering on the dash cam through the car charger, the dash cam will automatically turn on and start recording (if the card has been inserted). To change settings, please firstly stop recording.
- ② Please charge for 30 minutes before using this dash cam powered by the built-in battery.
- ③ The built-in battery is only used to power the "parking monitor" function. In normal use, please plug the car charger into the cigarette lighter of the car to power the dash cam. The built-in battery is not recommended as a normal power supply for the dash cam. This is to avoid parking monitoring failure caused by running out of battery while the car is parked.
- ④ The camera can also be powered by connecting it to a power source such as your DC 5V phone adapter via the USB cable. When charging, please shut down the camera by long pressing the power button.
- ⑤ Regarding the usage of the cable clip, only one clip is needed to fix the outlet position of the USB cable which connects to the dash camera's power port, the remaining cable must be hidden along the top edge of the windshield. Please hide the cable according to the above picture.

FORMATTING THE MEMORY CARD

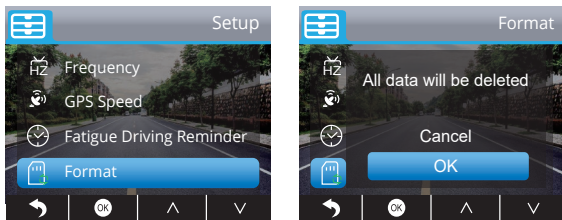
The memory card needs to be formatted firstly on the computer and then format on the camera to make sure it can be more compatible with the camera.

If not format, the camera will show "Insert memory card" on the screen. This dash cam supports a memory card, up to 128G with class 10 & above.

1. Please format the card on the computer firstly.
2. After inserting the card into the camera and turning on the camera, press **II** button to stop recording.
3. Press **+** to enter setting interface, press **>** to **⚙** and press **⚙** to enter Setup interface.



- Press **✓** to choose "Format", press **☰** to format interface and press **☰** and **✓** choose "OK", then press **☰** to format the card. After finishing the format, it will back to the setup interface.



Note:

- ① All data will be deleted. Before formatting your memory card, please remember to backup your important data on your other devices.
- ② Every time you insert an memory card, please format it in the camera to ensure that the memory card is compatible with the camera.

DOWNLOAD THE APP AND GPS PLAYER

Download the "RoadCam" app on the App Store or Google Play.



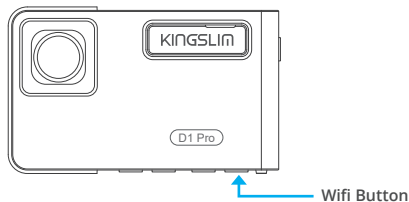
Download the GPS player: www.kingslim.net/player

Note: Please turn off the anti-virus software on the computer before installing the player or click "allow" when prompted.

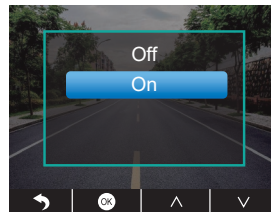
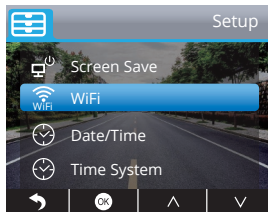
USE THE "ROADCAM" APP

CONNECT WITH THE APP


1. Long press the Wifi button on the bottom of camera to enter the Wifi settings interface.



Or short press **☰** to enter setting interface, press **▶** to **☰** and press **☰** to enter Setup interface. Press **✓** to choose "Wifi", press **☰** and **✓** choose "On" to enable Wifi.

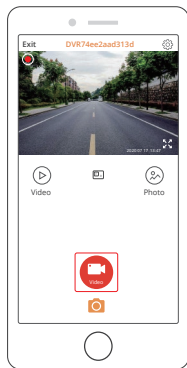
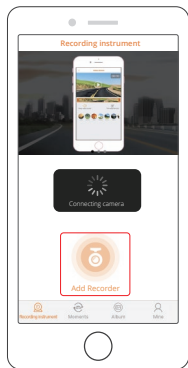


Note: WiFi is on, please connect






SSID: DVR74ee2aad313d
PWD: 12345678

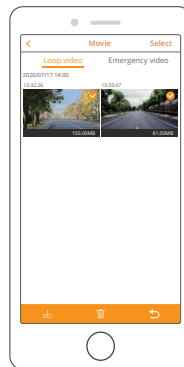
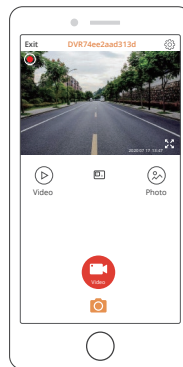
2. Go to your smartphone's Wifi settings and connect to the Wifi name that's shown on the dash cam. Enter the password and confirm the Wifi network.
3. Open the "RoadCam" app, tap "Add Recorder", wait a few seconds to enter the preview interface.
4. Tap the video or photo icon to control the dash cam, either recording videos or shooting photos.



DOWNLOAD OR DELETE VIDEOS AND PHOTOS

1. Tap the  icon to stop the recording.
2. Tap the  or  icon to check the videos or photos.
3. Tap "Select" and choose videos or photos that you want.
4. Tap the download or delete icon to download or delete.

Note: To exit the Wifi feature, please press the power button on the dash cam.



USER MANUAL

Scan the following QR code or visit the KingSlim website to download the detailed user manual.

www.kingslim.net/manual/d1pro.pdf

