



Report No.: EA20110101F04001

1 of 34

**ELECTROMAGNETIC EMISSIONS COMPLIANCE REPORT
INTENTIONAL RADIATOR CERTIFICATION TO
FCC PART 15 SUBPART C REQUIREMENT**

OF

Wireless Charger

**Model No.: SK-SW15-001C, SK-SW15-002C, SK-SW15-005C,
SK-SW15-008C, SK-SW15-009C, SK-SW15-010C**

Trademark: N/A

FCC ID: 2AYC9SK-SW15-01

Report No.: EA20110101F04001

Issue Date: Jan. 25, 2021

Prepared for

Shenzhen Simsukian Electronics Technology Co., Ltd.

**Building 1, the 5th plant, Jiayi Industrial Park, Daping Community,
Guanlan Street Longhua District, Shenzhen P.R. China**

Prepared by

Dong Guan Anci Electronic Technology Co., Ltd.

**1-2 Floor, Building A, No.11, Headquarters 2 Road, Songshan, Lake
Hi-tech Industrial Development Zone, Dongguan City, Guangdong Pr.,
China.**

**This report shall not be reproduced, except in full, without the written approval of
Dong Guan Anci Electronic Technology Co., Ltd.**



VERIFICATION OF COMPLIANCE

Applicant:	Shenzhen Simsukian Electronics Technology Co., Ltd. Building 1, the 5th plant, Jiayi Industrial Park, Daping Community, Guanlan Street Longhua District, Shenzhen P.R. China
Manufacturer:	Shenzhen Simsukian Electronics Technology Co., Ltd. Building 1, the 5th plant, Jiayi Industrial Park, Daping Community, Guanlan Street Longhua District, Shenzhen P.R. China
Product Description:	Wireless Charger
Trade Mark:	N/A
Model Number:	SK-SW15-001C, SK-SW15-002C, SK-SW15-005C, SK-SW15-008C, SK-SW15-009C, SK-SW15-010C (Note:All models are identical except for the different model names and appearance. We chose model:SK-SW15-001C for all tests.)

We hereby certify that:

The above equipment was tested by Dong Guan Anci Electronic Technology Co., Ltd. The test data, data evaluation, test procedures, and equipment configurations shown in this report were made in accordance with the procedures given in ANSI C63.10-2013 and the energy emitted by the sample EUT tested as described in this report is in compliance with conducted and radiated emission limits of FCC Rules Part 15.209(2020).

Date of Test : November 19, 2020 to January 22, 2021

Prepared by : Tomas Yang/Supervisor

Reviewer & Authorized Signer : Alan He/Manager



Modified Information

Version	Summary	Revision Date	Report No.
Ver.1.0	Original Report	/	EA20110101F04001



Table of Contents

- 1 GENERAL INFORMATION 5**
 - 1.1 PRODUCT DESCRIPTION 5
 - 1.2 RELATED SUBMITTAL(S) / GRANT(S) 6
 - 1.3 TEST METHODOLOGY 6
 - 1.4 SPECIAL ACCESSORIES 6
 - 1.5 EQUIPMENT MODIFICATIONS 6
 - 1.6 TEST FACILITY 6
- 2 SYSTEM TEST CONFIGURATION..... 7**
 - 2.1 EUT CONFIGURATION 7
 - 2.2 EUT EXERCISE 7
 - 2.3 TEST PROCEDURE 7
 - 2.4 CONFIGURATION OF TESTED SYSTEM..... 8
- 3 SUMMARY OF TEST RESULTS..... 8**
- 4 TEST SYSTEM UNCERTAINTY 9**
- 5 CONDUCTED EMISSIONS TEST 10**
 - 5.1 MEASUREMENT PROCEDURE 10
 - 5.2 TEST SET-UP (BLOCK DIAGRAM OF CONFIGURATION) 10
 - 5.3 MEASUREMENT EQUIPMENT USED..... 10
 - 5.4 CONDUCTED EMISSION LIMIT 10
 - 5.5 MEASUREMENT RESULT 11
 - 5.6 CONDUCTED MEASUREMENT PHOTO..... 14
- 6 RADIATED EMISSION TEST..... 15**
 - 6.1 MEASUREMENT PROCEDURE 15
 - 6.2 TEST SET-UP (BLOCK DIAGRAM OF CONFIGURATION) 15
 - 6.3 MEASUREMENT EQUIPMENT USED..... 16
 - 6.4 RADIATED EMISSION LIMIT 16
 - 6.5 MEASUREMENT RESULT 18
 - 6.6 RADIATED MEASUREMENT PHOTOS..... 22
- 7 20DB BANDWIDTH 23**
 - 7.1 20DB BANDWIDTH LIMIT 23
 - 7.2 TEST INSTRUMENTS..... 23
 - 7.3 TEST PROCEDURE 23
 - 7.4 TEST SETUP 23
 - 7.5 TEST RESULT 23
- 8 ANTENNA APPLICATION 25**
 - 8.1 ANTENNA REQUIREMENT 25
 - 8.2 RESULT 25



1 General Information

1.1 Product Description

Characteristics	Description
Product Name	Wireless Charger
Model number	SK-SW15-001C
Operation Mode	Wireless Charging
Input Rating	PD: DC 5V, 2A or DC 9V, 2.22A or DC 12V, 1.67A
Power Supply	AC120V/60Hz for adapter
Operating Frequency	110-205KHz
Wireless Charging Power	5W/7.5W/10W/15W
Modulation Technique	ASK
Antenna Type	Induction coil



1.2 Related Submittal(s) / Grant(s)

This submittal(s) (test report) is intended for FCC ID: 2AYC9SK-SW15-01 filing to comply with the FCC Part 15, Subpart C Rules.

1.3 Test Methodology

Both conducted and radiated testing was performed according to the procedures in ANSI C63.10 (2013). Radiated testing was performed at an antenna to EUT distance 3 meters.

1.4 Special Accessories

Not available for this EUT intended for grant.

1.5 Equipment Modifications

Not available for this EUT intended for grant.

1.6 Test Facility

Site Description
EMC Lab. : Accredited by CNAS, 2017.06.26
The certificate is valid until 2022.10.28
The Laboratory has been assessed and proved to be in compliance with
CNAS-CL01:2006 (identical to ISO/IEC 17025:2005)
The Certificate Registration Number is L6214.

Accredited by A2LA, 2018.03.15
The Certificate Number is 4422.01.

Name of Firm : Dong Guan Anci Electronic Technology Co., Ltd.
Site Location : 1-2 Floor, Building A, No.11, Headquarters 2 Road, Songshan, Lake
Hi-tech Industrial Development Zone, Dongguan City, evelopment Zone,
Dongguan City, Guangdong Pr., China.



2 System Test Configuration

2.1 EUT Configuration

The EUT configuration for testing is installed on RF field strength measurement to meet the Commissions requirement and operating in a manner which intends to maximize its emission characteristics in a continuous normal application.

2.2 EUT Exercise

The Transmitter was operated in the normal operating mode. The TX frequency was fixed which was for the purpose of the measurements.

2.3 Test Procedure

2.3.1 Conducted Emissions

The EUT is placed on a turn table which is 0.8 m above ground plane. According to the requirements in Section 13.1.4.1 of ANSI C63.10-2013 Conducted emissions from the EUT measured in the frequency range between 0.15 MHz and 30 MHz using CISPR Quasi-Peak and average detector mode.

2.3.2 Radiated Emissions

The EUT is placed on a turn table which is 0.8 m above ground plane. The turn table shall rotate 360 degrees to determine the position of maximum emission level. EUT is set 3m away from the receiving antenna which varied from 1m to 4m to find out the highest emission. And also, each emission was to be maximized by changing the polarization of receiving antenna both horizontal and vertical. In order to find out the max. emission, the fixed in a particular direction according to the requirements in Section 13.1.4.1 of ANSI C63.10-2013.

2.4 Configuration of Tested System

Fig. 2-1 Configuration of Tested System

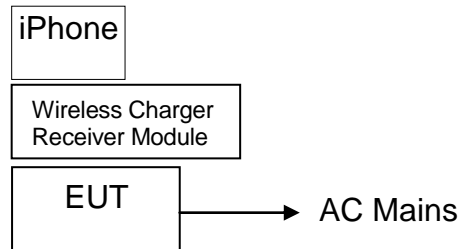


Table 2-1 Equipment Used in Tested System

Item	Equipment	Trade Mark	Model No.	FCC ID	Note
1.	Wireless Charger	N/A	SK-SW15-001C	2AYC9SK-SW15-01	EUT
2.	Adapter	UGREEN	Model:CD217 Input: AC 100-240V, 50/60Hz Output: DC 9V/3A,DC 12V/2.5A	N/A	Support EUT
3.	SAMSUNG S9	SAMSUNG	Samsung Galaxy S9	N/A	Support Equipment
4.	Xiaomi 9	MI	Xiaomi 9	N/A	Support Equipment
5.	Wireless Charging Receiver Module	Universal	N/A	N/A	Support Equipment

Note:

- (1) Unless otherwise denoted as EUT in 『Remark』 column, device(s) used in tested system is a support equipment.

3 Summary of Test Results

FCC Rules	Description Of Test	Result
§15.207	AC Power Conducted Emission	Compliant
§15.209	Radiated Emission	Compliant
§2.1049	20dB Bandwidth	Compliant
§15.203	Antenna Requirement	Compliant



4 TEST SYSTEM UNCERTAINTY

The following measurement uncertainty levels have been estimated for tests performed on the apparatus:

Parameter	Uncertainty
Conducted Emissions Test	$\pm 2.0\text{dB}$
Radiated Emission Test	$\pm 2.0\text{dB}$
Temperature	$\pm 0.5^\circ\text{C}$
Humidity	$\pm 3\%$

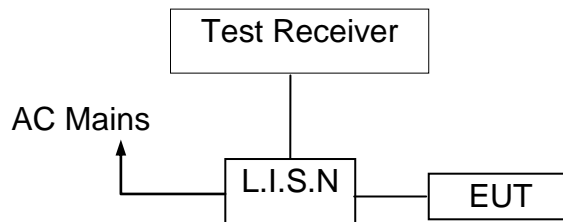
Remark: The coverage Factor ($k=2$), and measurement Uncertainty for a level of Confidence of 95%

5 Conducted Emissions Test

5.1 Measurement Procedure

1. The EUT was placed on a table which is 0.8m above ground plane.
2. Maximum procedure was performed on the six highest emissions to ensure EUT compliance.
3. Repeat above procedures until all frequency measured was complete.

5.2 Test SET-UP (Block Diagram of Configuration)



5.3 Measurement Equipment Used

EQUIPMENT TYPE	MFR	MODEL NUMBER	SERIAL NUMBER	Calibrated until
L.I.S.N	SCHWARZBECK	NSLK 8127	8127-669	2021-05-18
10 db attenuator	JFW	50FP-010-H4	4360846-427-1	2021-05-18
RF Cable	N/A	N/A	2#	2021-05-18
EMI Test Receiver	ROHDE&SCHWARZ	ESCI	101358	2021-05-18

5.4 Conducted Emission Limit

Conducted Emission Frequency(MHz)	Quasi-peak	Average
0.15-0.5	66-56	56-46
0.5-5.0	56	46
5.0-30.0	60	50

- Note:** 1. The lower limit shall apply at the transition frequencies
 2. The limit decreases in line with the logarithm of the frequency in the range of 0.15 to 0.50MHz.



5.5 Measurement Result

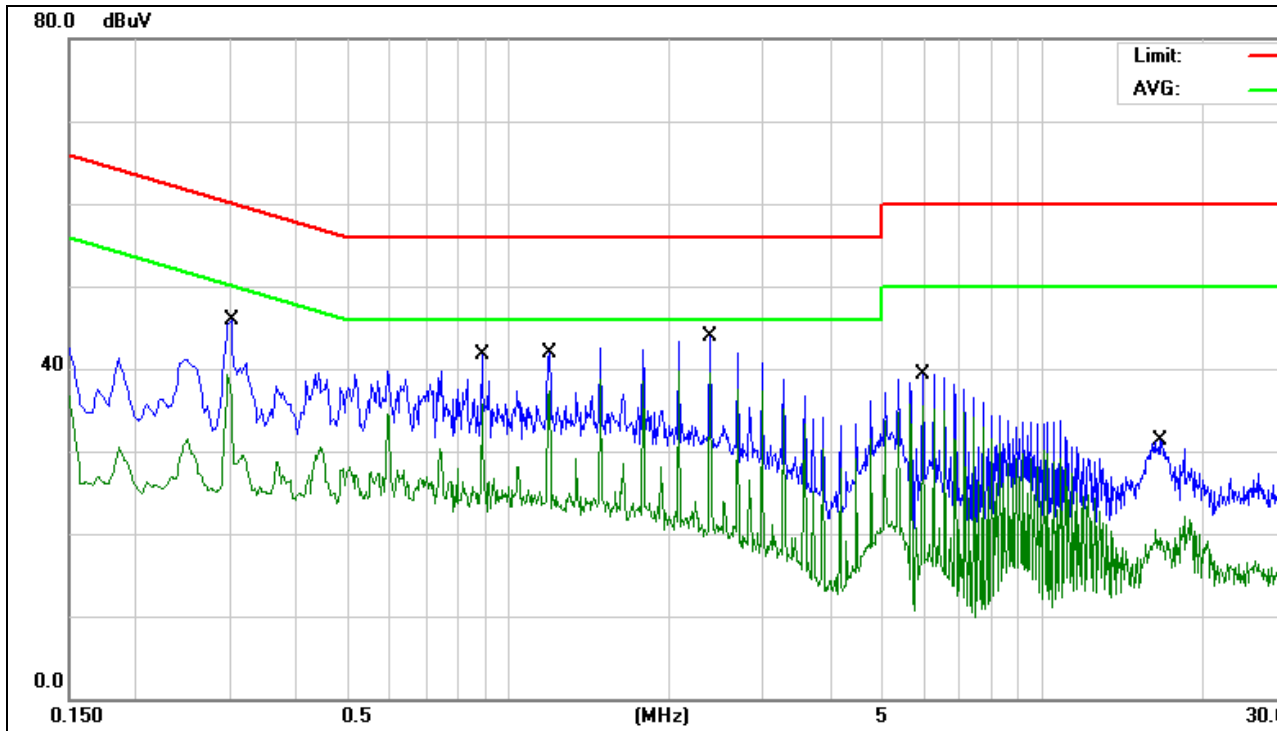
Operation Mode:	TX	Test Date :	2021/01/12
Frequency Range:	0.15MHz~30MHz	Temperature :	28°C
Test Result:	PASS	Humidity :	65 %
Test By:	Best		

Pass

We pretested modes (Wireless Charging(15W), Wireless Charging(10W),Wireless Charging(5W)) for EUT. The worst test data see follow the table.

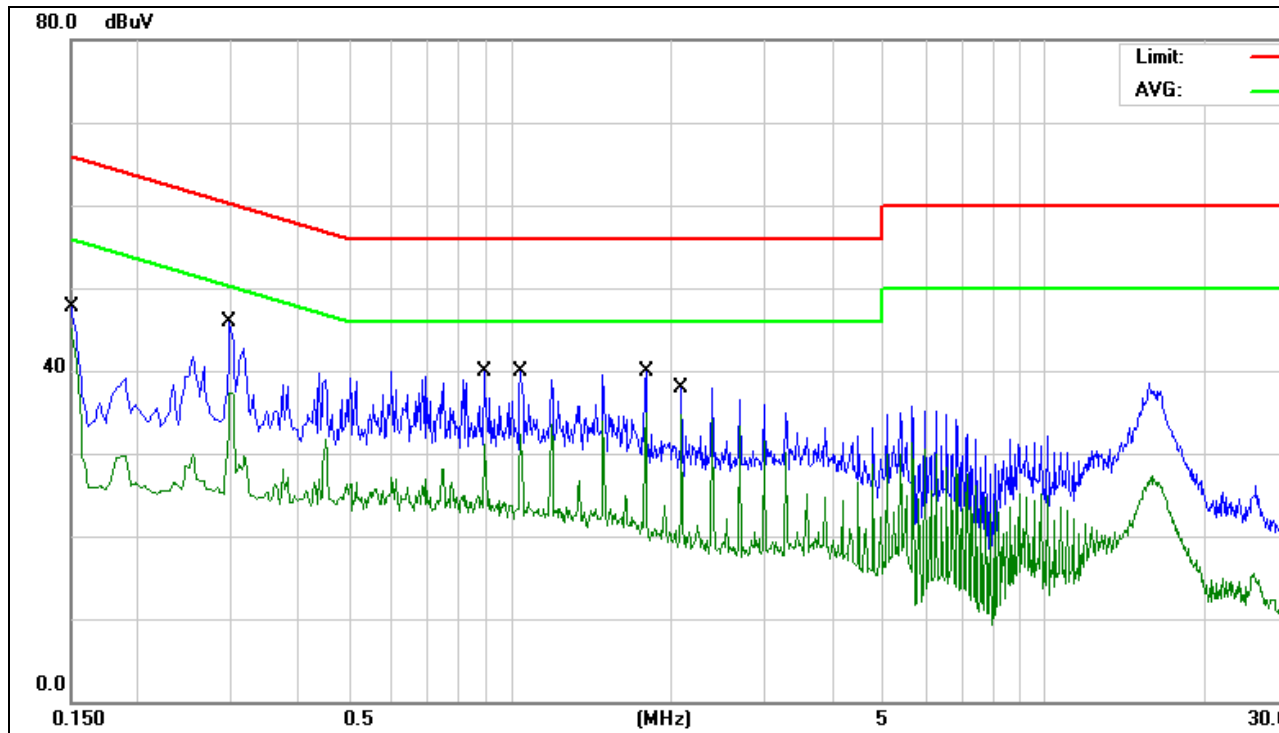


Test mode: Wireless Charging 15W use Xiaomi 9



Site:	843	Phase:	L1	Temperature(C):	26(C)
Limit:	FCC Part 18 C Conduction(QP)	Test Time:	2021/01/12	Humidity(%):	60%
EUT:	Wireless Charger	Power Rating:	AC 120V/60Hz	Test Engineer:	Jack
M/N.:	SK-SW15-001C				
Mode:	Wireless Charging 15W				
Note:					

No.	Frequency (MHz)	Reading Level(dBuV)	Factor (dB)	Measurement(dBuV)	Limit (dBuV)	Over (dB)	Detector	Comment
1	0.3020	31.29	9.66	40.95	60.19	-19.24	QP	
2	0.3020	26.15	9.66	35.81	50.19	-14.38	AVG	
3	0.8940	29.12	9.82	38.94	56.00	-17.06	QP	
4	0.8940	26.34	9.82	36.16	46.00	-9.84	AVG	
5	1.1940	29.44	9.88	39.32	56.00	-16.68	QP	
6 *	1.1940	26.91	9.88	36.79	46.00	-9.21	AVG	
7	2.3900	27.19	9.86	37.05	56.00	-18.95	QP	
8	2.3900	23.38	9.86	33.24	46.00	-12.76	AVG	
9	5.9740	12.61	9.97	22.58	60.00	-37.42	QP	
10	5.9740	6.25	9.97	16.22	50.00	-33.78	AVG	
11	16.5740	15.26	10.14	25.40	60.00	-34.60	QP	
12	16.5740	8.42	10.14	18.56	50.00	-31.44	AVG	



Site:	843	Phase:	N	Temperature(C):	26(C)
Limit:	FCC Part 18 C Conduction(QP)			Humidity(%):	60%
EUT:	Wireless Charger	Test Time:	2021/01/12		
M/N.:	SK-SW15-001C	Power Rating:	AC 120V/60Hz		
Mode:	Wireless Charging 15W	Test Engineer:	Jack		
Note:					

No.	Frequency (MHz)	Reading Level(dBuV)	Factor (dB)	Measurement(dBuV)	Limit (dBuV)	Over (dB)	Detector	Comment
1	0.1500	36.26	9.63	45.89	65.99	-20.10	QP	
2	0.1500	35.19	9.63	44.82	55.99	-11.17	AVG	
3	0.2980	33.05	9.66	42.71	60.30	-17.59	QP	
4	0.2980	27.99	9.66	37.65	50.30	-12.65	AVG	
5	0.8940	24.81	9.82	34.63	56.00	-21.37	QP	
6	0.8940	20.39	9.82	30.21	46.00	-15.79	AVG	
7	1.0460	24.38	9.84	34.22	56.00	-21.78	QP	
8	1.0460	18.58	9.84	28.42	46.00	-17.58	AVG	
9	1.7940	27.60	9.86	37.46	56.00	-18.54	QP	
10	1.7940	25.15	9.86	35.01	46.00	-10.99	AVG	
*								
11	2.0940	26.97	9.84	36.81	56.00	-19.19	QP	
12	2.0940	24.50	9.84	34.34	46.00	-11.66	AVG	

5.6 Conducted Measurement Photo



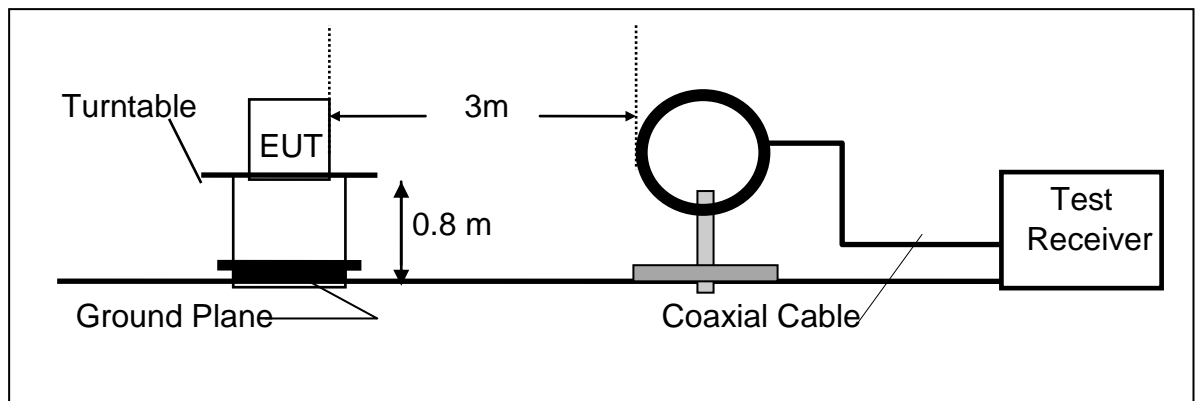
6 Radiated Emission Test

6.1 Measurement Procedure

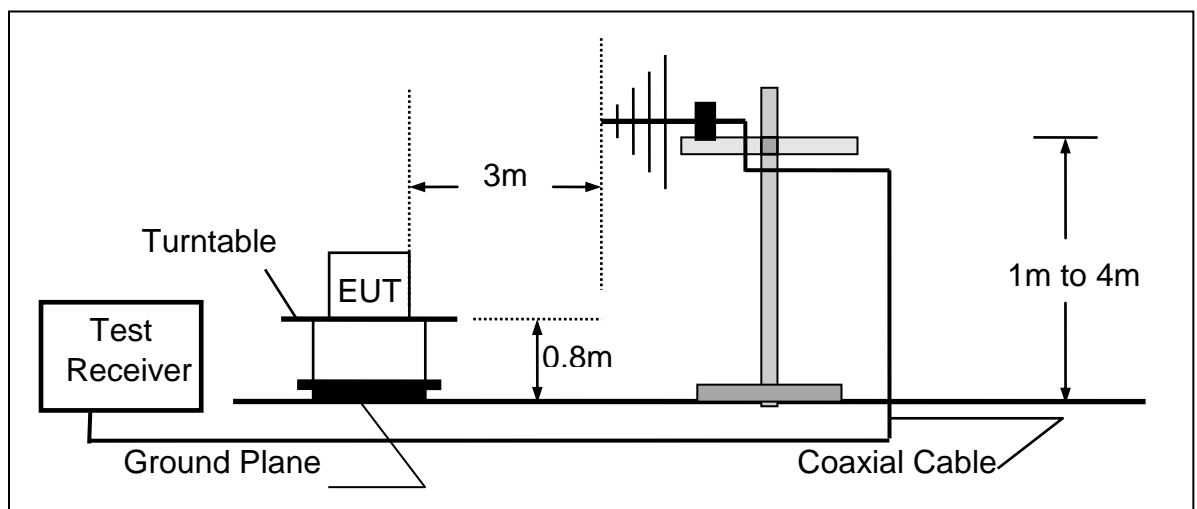
1. The EUT was placed on a turn table which is 0.8m above ground plane.
2. Maximum procedure was performed on the six highest emissions to ensure EUT compliance.
3. And also, each emission was to be maximized by changing the polarization of receiving antenna both horizontal and vertical.
4. Repeat above procedures until all frequency measured were complete.

6.2 Test SET-UP (Block Diagram of Configuration)

(A) Radiated Emission Test Set-Up, Frequency Below 30MHz



(B) Radiated Emission Test Set-Up, Frequency Below 1000MHz





6.3 Measurement Equipment Used

Item	Equipment	Manufacturer	Model No.	Serial No.	Calibrated until
1.	EMI Test Receiver	Rohde & Schwarz	ESPI	100502	2021/11/19
2.	Pre-Amplifier	HP	8447D	2727A06172	2021-05-18
3.	Bilog Antenna	Schwarzbeck	VULB9163	VULB9163-588	2021-05-18
4.	Loop Antenna	Schwarzbeck	FMZB 1516	1516-141	2021/11/19
5.	RF Cable	Gigalink Microwave	ZT40-2.92J-2.92 J-2m	N/A	2021/11/19
6.	RF Cable	Gigalink Microwave	ZT40-2.92J-2.92 J-0.3m	N/A	2021/11/19
7.	RF Cable	N/A	N/A	6#	2021-05-18
8.	3m Semi-anechoic Chamber	chengyu	9m*6m*6m	N/A	2021-05-18
9.	Test Software	Farad	EZ-EMC Ver:ANCI-3A1	N/A	N/A

6.4 Radiated Emission Limit

The emissions from an intentional radiator shall not exceed the field strength levels specified in the following table 15.209(a):

FCC Part 15.209				
Frequency (MHz)	Field Strength Limitation		Field Strength Limitation Frequency tion at 3m Measurement Dist	
	(uV/m)	Dist	(uV/m)	(dBuV/m)
0.009 – 0.490	$2400 / F(\text{KHz})$	300m	$10000 * 2400/F(\text{KHz})$	$20\log 2400/F(\text{KHz}) + 80$
0.490 – 1.705	$24000 / F(\text{KHz})$	30m	$100 * 24000/F(\text{KHz})$	$20\log 24000/F(\text{KHz}) + 40$
1.705 – 30.00	30	30m	$100 * 30$	$20\log 30 + 40$
30.0 – 88.0	100	3m	100	$20\log 100$
88.0 – 216.0	150	3m	150	$20\log 150$
216.0 – 960.0	200	3m	200	$20\log 200$
Above 960.0	500	3m	500	$20\log 500$



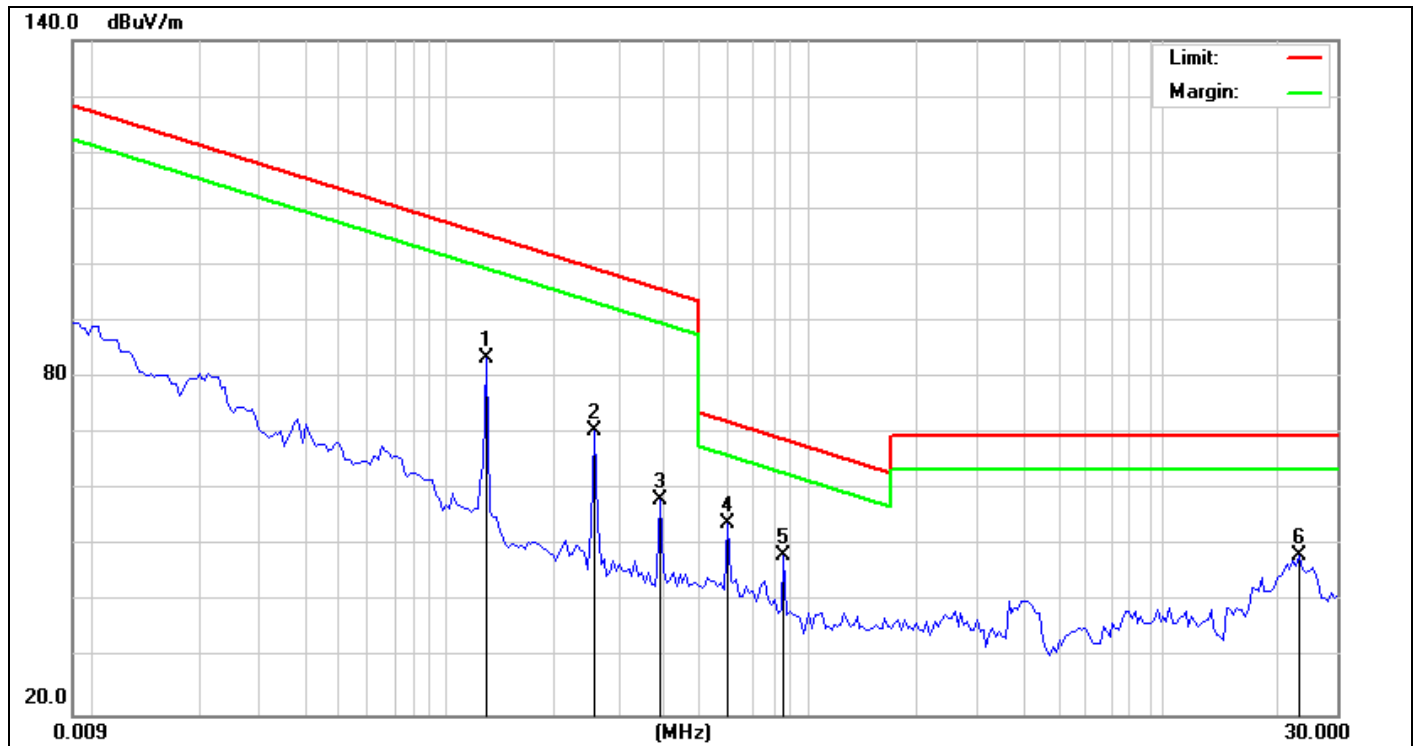
15.205 Restricted bands of operation

MHz	MHz	MHz	GHz
0.090 - 0.110	16.42 - 16.423	399.9 - 410	4.5 - 5.15
¹ 0.495 - 0.505	16.69475 - 16.69525	608 - 614	5.35 - 5.46
2.1735 - 2.1905	16.80425 - 16.80475	960 - 1240	7.25 - 7.75
4.125 - 4.128	25.5 - 25.67	1300 - 1427	8.025 - 8.5
4.17725 - 4.17775	37.5 - 38.25	1435 - 1626.5	9.0 - 9.2
4.20725 - 4.20775	73 - 74.6	1645.5 - 1646.5	9.3 - 9.5
6.215 - 6.218	74.8 - 75.2	1660 - 1710	10.6 - 12.7
6.26775 - 6.26825	108 - 121.94	1718.8 - 1722.2	13.25 - 13.4
6.31175 - 6.31225	123 - 138	2200 - 2300	14.47 - 14.5
8.291 - 8.294	149.9 - 150.05	2310 - 2390	15.35 - 16.2
8.362 - 8.366	156.52475 - 156.52525	2483.5 - 2500	17.7 - 21.4
8.37625 - 8.38675	156.7 - 156.9	2690 - 2900	22.01 - 23.12
8.41425 - 8.41475	162.0125 - 167.17	3260 - 3267	23.6 - 24.0
12.29 - 12.293	167.72 - 173.2	3332 - 3339	31.2 - 31.8
12.51975 - 12.52025	240 - 285	3345.8 - 3358	36.43 - 36.5
12.57675 - 12.57725	322 - 335.4	3600 - 4400	(²)

- Remark:
1. Emission level in dBuV/m=20 log (uV/m)
 2. Measurement was performed at an antenna to the closed point of EUT distance of meters.
 3. Only spurious frequency is permitted to locate within the Restricted Bands specified in provision of ξ 15.205, and the emissions located in restricted bands also comply with 15.209 limit.

6.5 Measurement Result

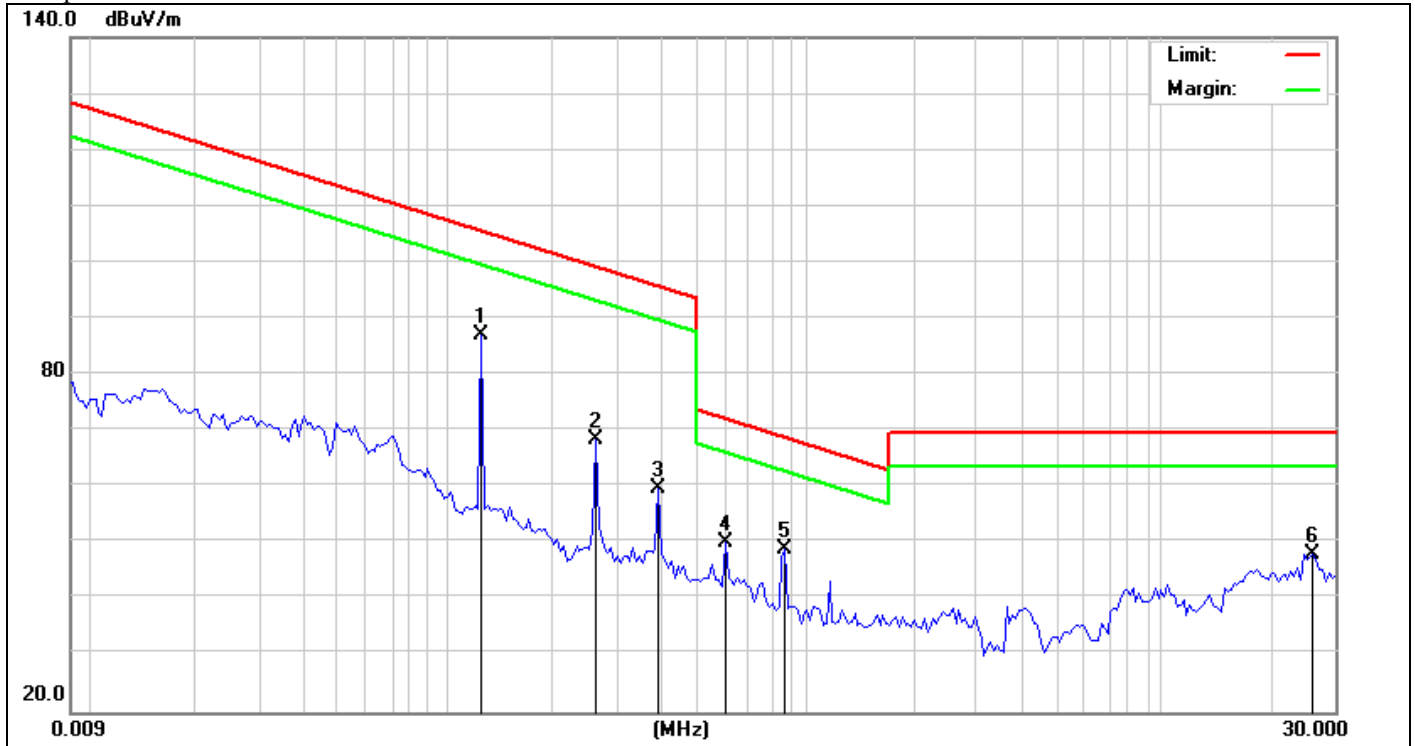
We pretested modes (Wireless Charging(15W), Wireless Charging(10W),Wireless Charging(5W)) for EUT. The worst mode (Wireless Charging(15W))test data see follow the table.



Site:	LAB	Antenna:Vertical	Temperature(C):23.4(C)
Limit:	FCC Part 15 Class B 3m Radiation(QP)	Test Time:	Humidity(%):56.7%
EUT:	Wireless Charger	Power Rating:	AC 120V/60Hz
M/N.:	SK-SW15-001C	Test Engineer:	sunshine
Mode:	Wireless Charging 15W		
Note:			

No.	Frequency (MHz)	Reading (dBuV)	Factor (dB/m)	Level (dBuV/m)	Limit (dBuV/m)	Margin (dB)	Det.	Height (cm)	Azimuth (deg)	Remark
1	0.1282	77.33	6.20	83.53	105.37	-21.84	QP	100	125	
2	0.2555	65.03	5.60	70.63	99.42	-28.79	QP	100	125	
3	0.3911	52.40	5.99	58.39	95.74	-37.35	QP	100	48	
4 *	0.5988	47.75	6.40	54.15	72.06	-17.91	QP	100	48	
5	0.8627	42.09	6.30	48.39	68.90	-20.51	QP	100	236	
6	23.5198	41.90	6.35	48.25	69.50	-21.25	QP	100	236	

*:Maximum data x:Over limit !:over margin
TRF No.: FCC 15.209/A



Site:	LAB	Antenna::Horizontal	Temperature(C):23.4(C)
Limit:	FCC Part 15 Class B 3m Radiation(QP)	Test Time:	Humidity(%):56.7%
EUT:	Wireless Charger	Power Rating:	AC 120V/60Hz
M/N.:	SK-SW15-001C	Test Engineer:	sunshine
Mode:	Wireless Charging 15W		
Note:			

No.	Frequency (MHz)	Reading (dBuV)	Factor (dB/m)	Level (dBuV/m)	Limit (dBuV/m)	Margin (dB)	Det.	Height (cm)	Azimuth (deg)	Remark
1 *	0.1257	80.93	6.22	87.15	105.54	-18.39	QP	100	125	
2	0.2607	62.81	5.61	68.42	99.25	-30.83	QP	100	125	
3	0.3911	53.90	5.99	59.89	95.74	-35.85	QP	100	48	
4	0.5988	43.75	6.40	50.15	72.06	-21.91	QP	100	48	
5	0.8803	42.56	6.27	48.83	68.72	-19.89	QP	100	236	
6	26.0298	42.16	5.89	48.05	69.50	-21.45	QP	100	236	

- Note:**
- (1) All Readings are Peak Value.
 - (2) Emission Level= Reading Level+Probe Factor +Cable Loss.
 - (3) The average measurement was not performed when the peak measured data under the limit of average detection.
 - (4) EUT lying on the table position is the worst case result in the report.

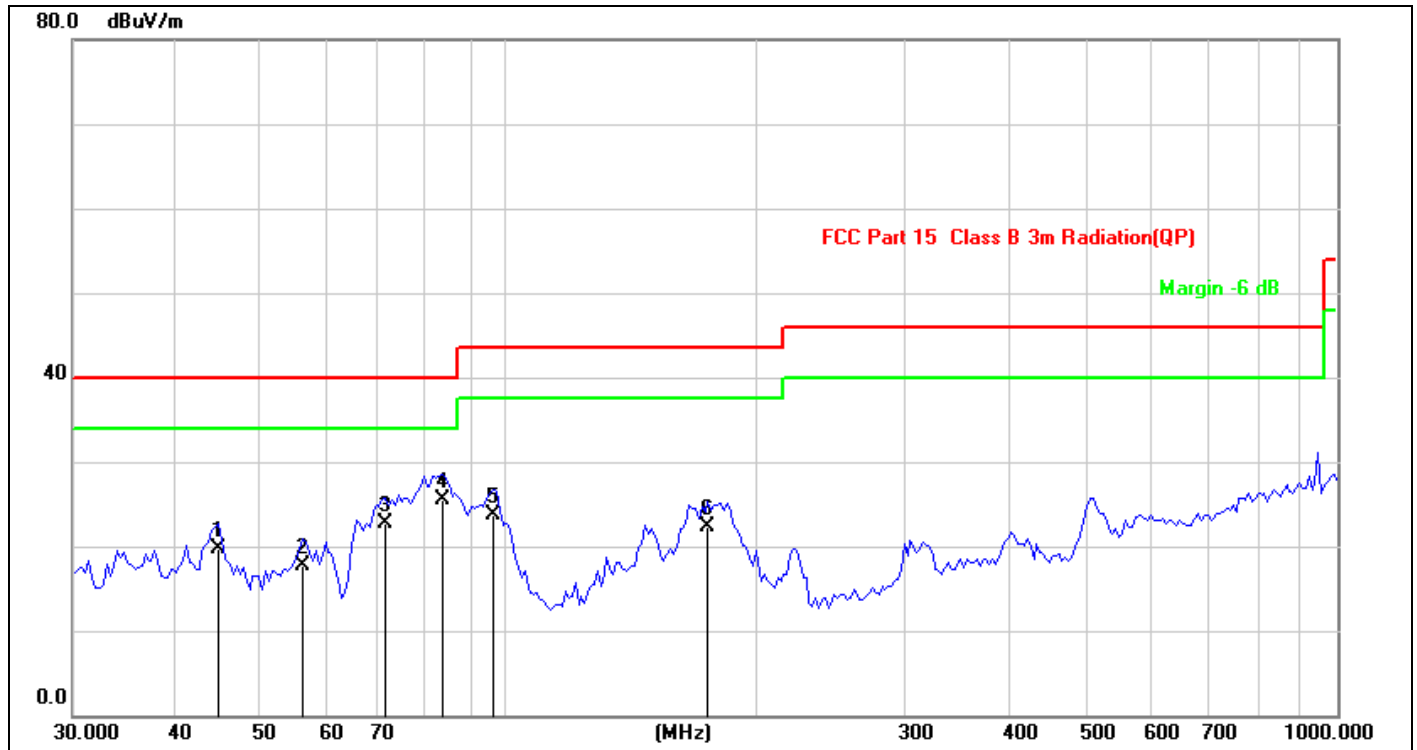


Report No.: EA20110101F04001

20 of 34

We pretested modes (Wireless Charging(15W),Wireless Charging(10W),Wireless Charging(5W)) for EUT. The worst test data see follow the table.

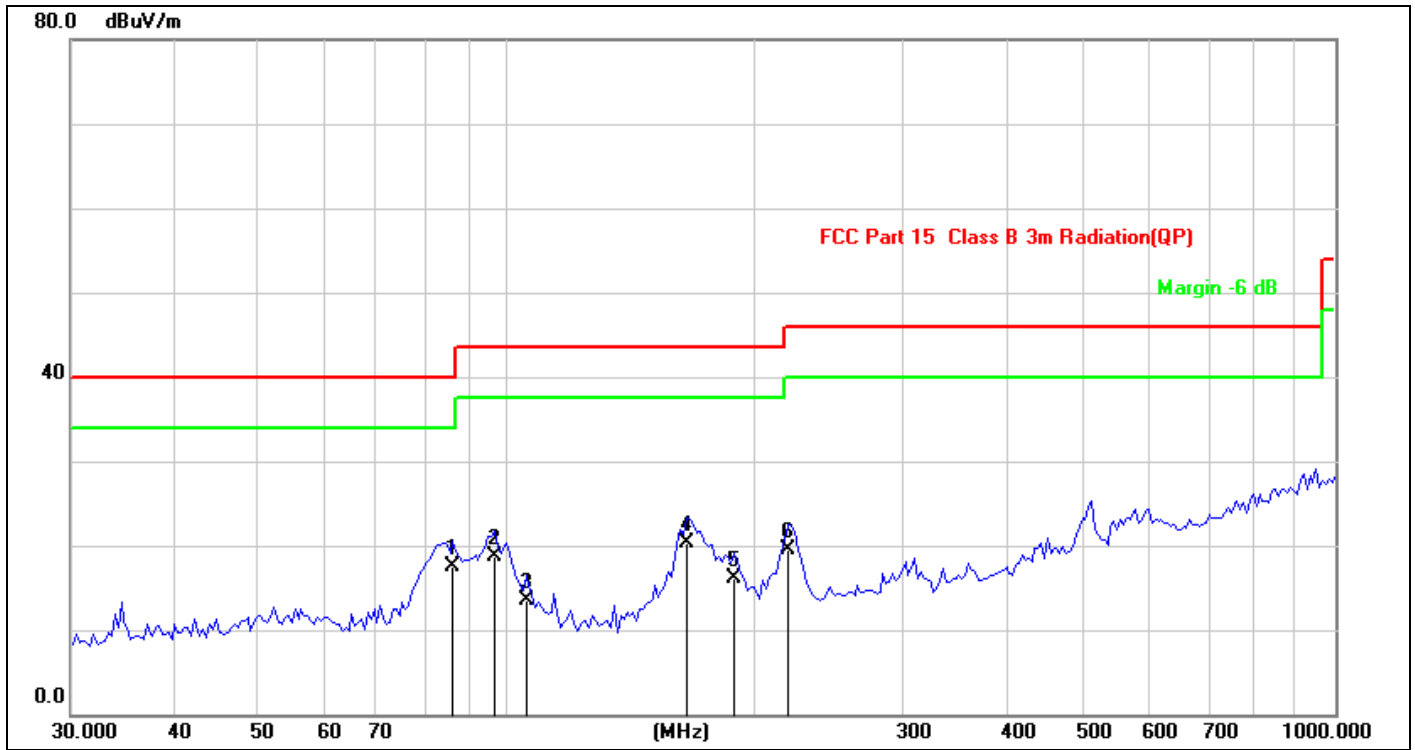
Test mode: Wireless Charging 15W use Xiaomi 9



Site:	LAB	Antenna::Vertical	Temperature(C):23.4(C)
Limit:	FCC Part 15 Class B 3m Radiation(QP)	Test Time:	Humidity(%):56.7%
EUT:	Wireless Charger	Power Rating:	AC 120V/60Hz
M/N.:	SK-SW15-001C	Test Engineer:	sunshine
Mode:	Wireless Charging 15W		
Note:			

No.	Frequency (MHz)	Reading (dBuV)	Factor (dB/m)	Level (dBuV/m)	Limit (dBuV/m)	Margin (dB)	Det.	Height (cm)	Azimuth (deg)	Remark
1	44.9006	36.73	-16.97	19.76	40.00	-20.24	QP	100	45	
2	56.8914	33.48	-15.68	17.80	40.00	-22.20	QP	100	45	
3	71.4552	40.49	-17.88	22.61	40.00	-17.39	QP	100	27	
4 *	83.6688	43.79	-18.24	25.55	40.00	-14.45	QP	100	27	
5	96.2672	41.14	-17.53	23.61	43.50	-19.89	QP	100	96	
6	174.7301	39.54	-17.31	22.23	43.50	-21.27	QP	100	96	

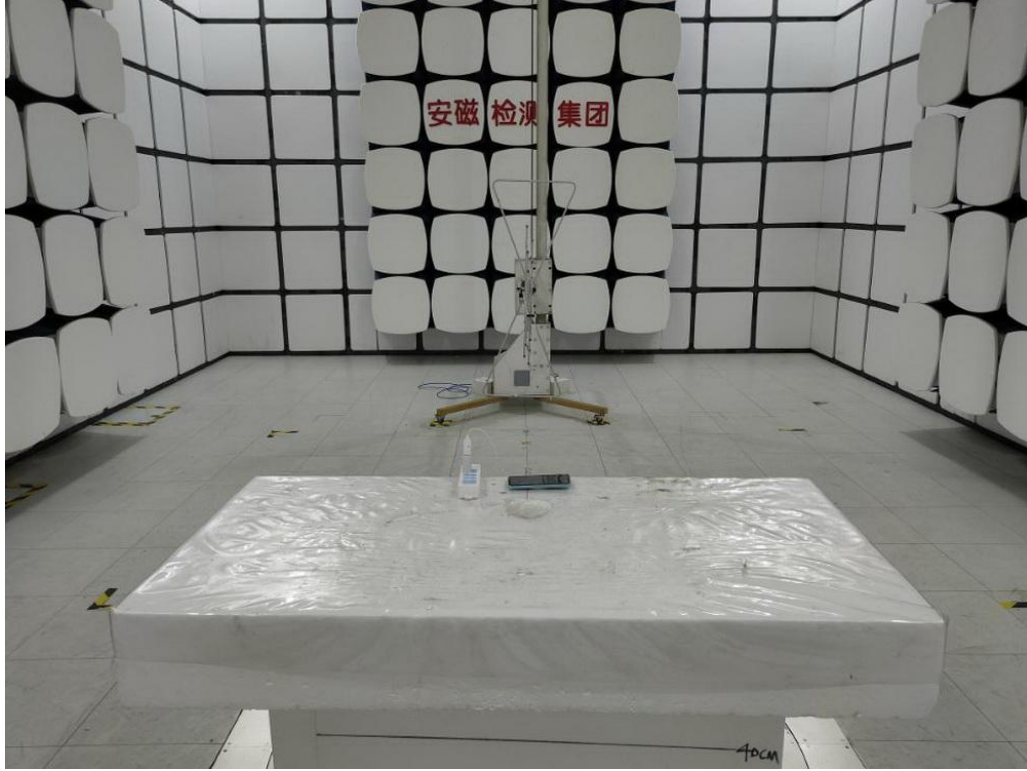
*:Maximum data x:Over limit !:over margin



Site:	LAB	Antenna::Horizontal	Temperature(C):23.4(C)
Limit:	FCC Part 15 Class B 3m Radiation(QP)		Humidity(%):56.7%
EUT:	Wireless Charger	Test Time:	2021/01/12
M/N.:	SK-SW15-001C	Power Rating:	AC 120V/60Hz
Mode:	Wireless Charging 15W	Test Engineer:	sunshine
Note:			

No.	Frequency (MHz)	Reading (dBuV)	Factor (dB/m)	Level (dBuV/m)	Limit (dBuV/m)	Margin (dB)	Det.	Height (cm)	Azimuth (deg)	Remark
1 *	86.6547	35.81	-18.36	17.45	40.00	-22.55	QP	100	45	
2	97.1148	36.01	-17.40	18.61	43.50	-24.89	QP	100	45	
3	106.0126	29.99	-16.50	13.49	43.50	-30.01	QP	100	27	
4	165.7771	37.93	-17.64	20.29	43.50	-23.21	QP	100	27	
5	189.0743	32.74	-16.70	16.04	43.50	-27.46	QP	100	96	
6	219.4598	34.68	-15.12	19.56	46.00	-26.44	QP	100	96	

6.6 Radiated Measurement Photos



7 20db Bandwidth

7.1 20dB Bandwidth Limit

None: for reporting purposed only.

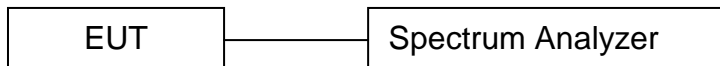
7.2 Test Instruments

Refer a test equipment and calibration data table in this test report.

7.3 Test Procedure

The bandwidth of the fundamental frequency was measured by spectrum analyzer with 30Hz RBW and 100Hz VBW. The 20dB bandwidth is defined as the total spectrum the power of which is higher than peak power minus 20dB.

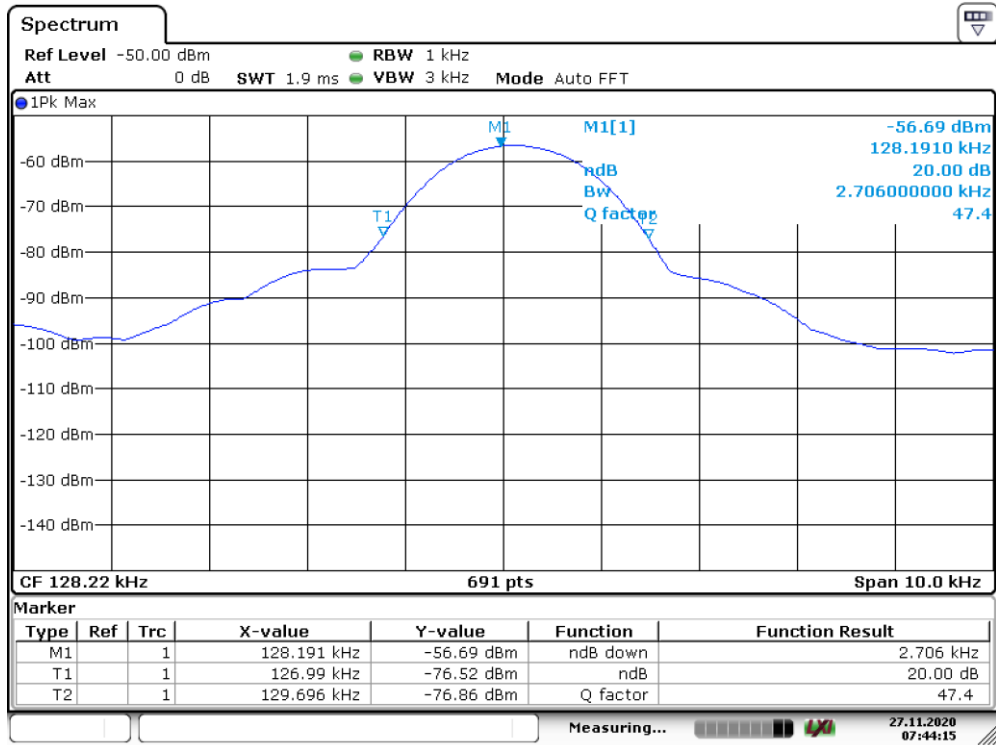
7.4 Test Setup



7.5 Test Result

Frequency (KHz)	20dB Bandwidth (kHz)	Results
128.22	2.706	PASS

20 dB Bandwidth Test plot



Date: 27.NOV.2020 07:44:14



8 Antenna Application

8.1 Antenna requirement

For intentional device, according to FCC 47 CFR Section 15.203, an intentional radiator shall be designed to ensure that no antenna other than that furnished by the responsible party shall be used with the device.

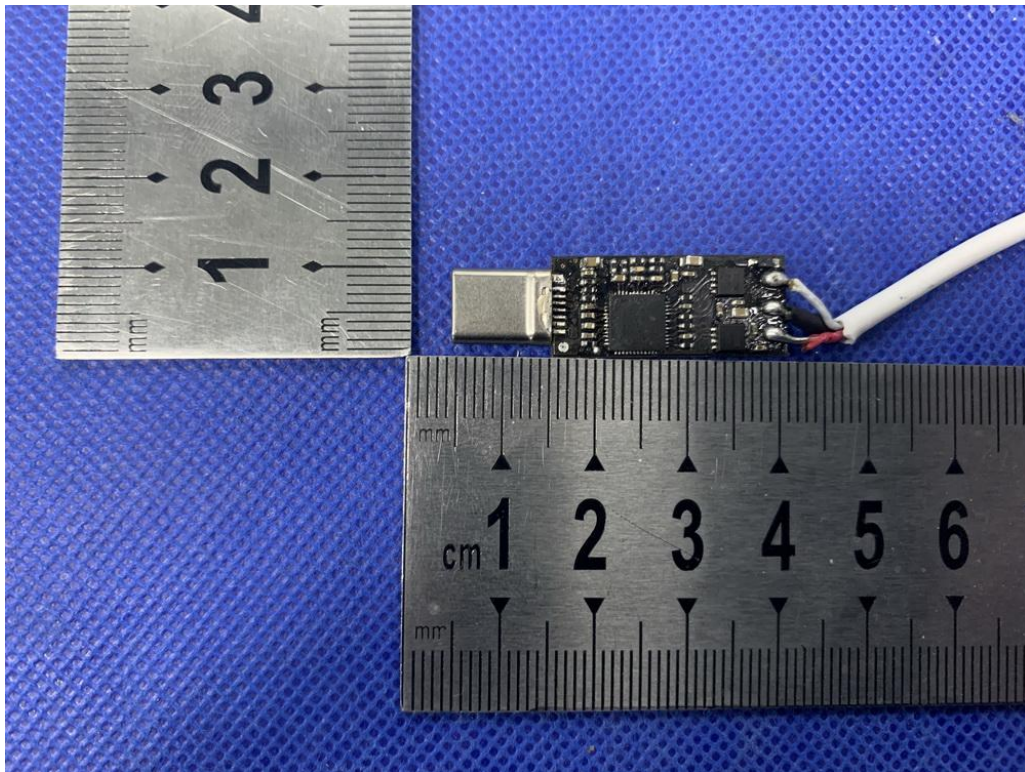
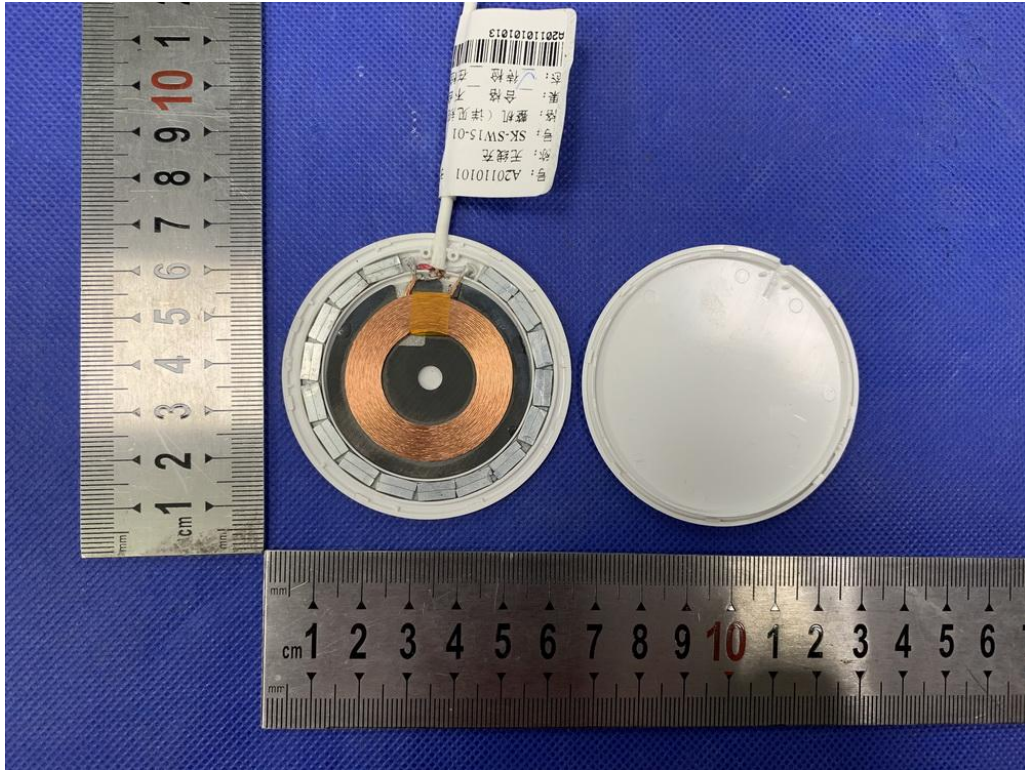
8.2 Result

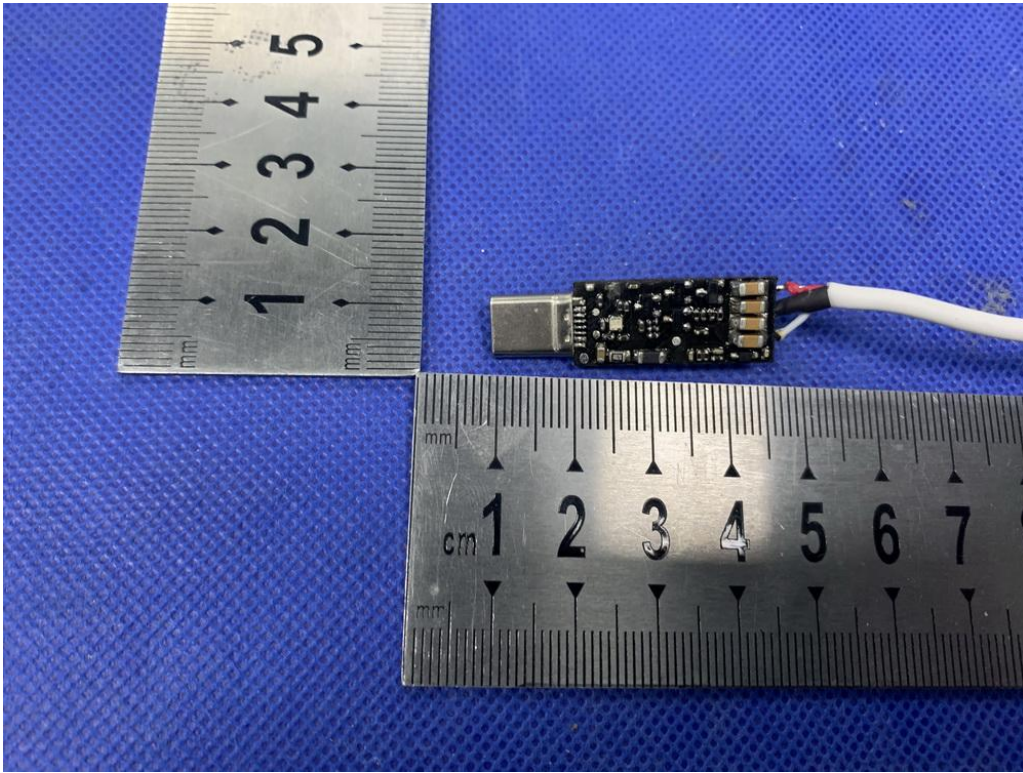
The EUT's antenna, permanent attached antenna, used an Induction coil and integrated on PCB, The antenna's gain meets the requirement.



APPENDIX (Photos of EUT)





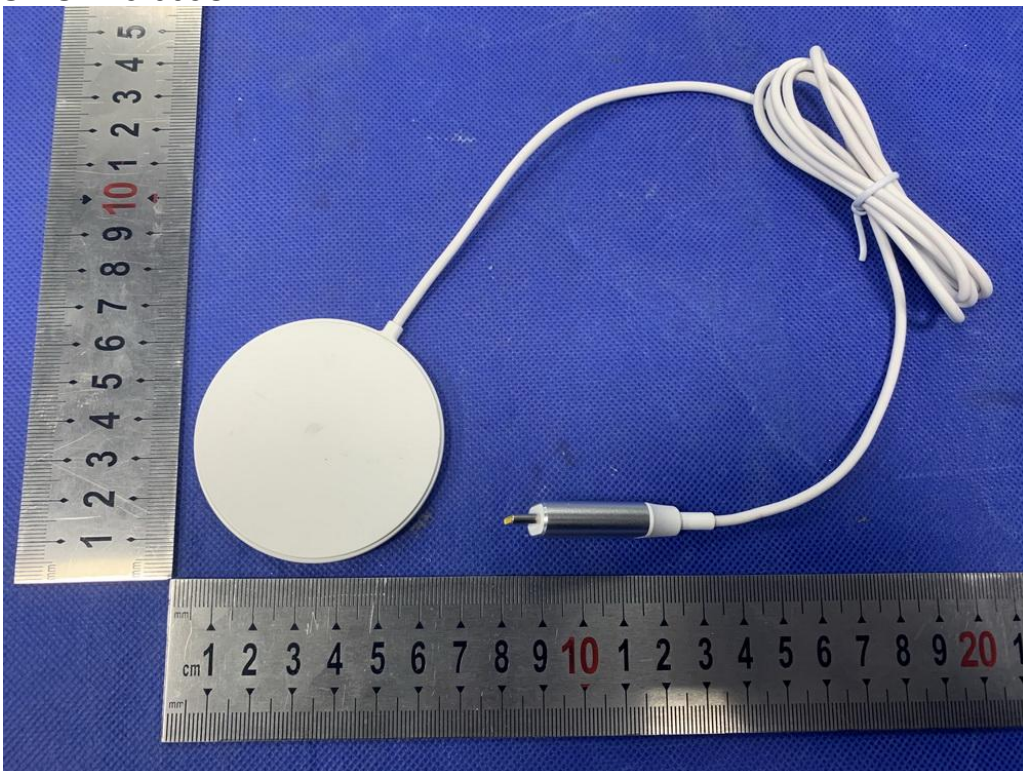


Model: SK-SW15-002C





Model: SK-SW15-005C



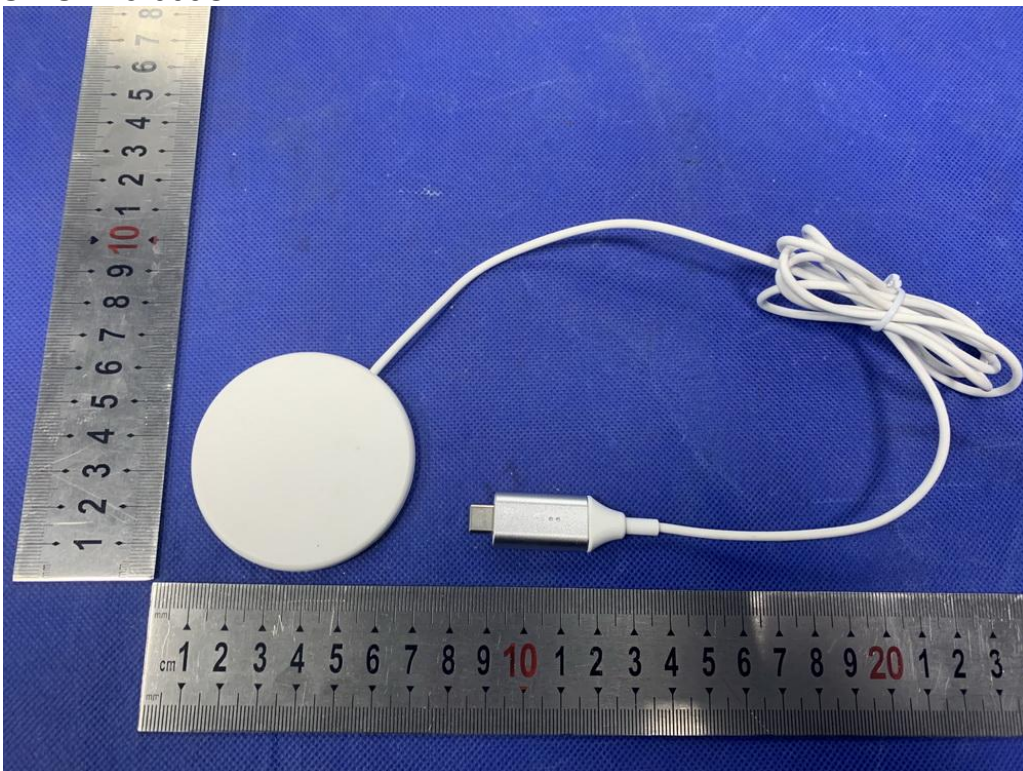


Model: SK-SW15-008C





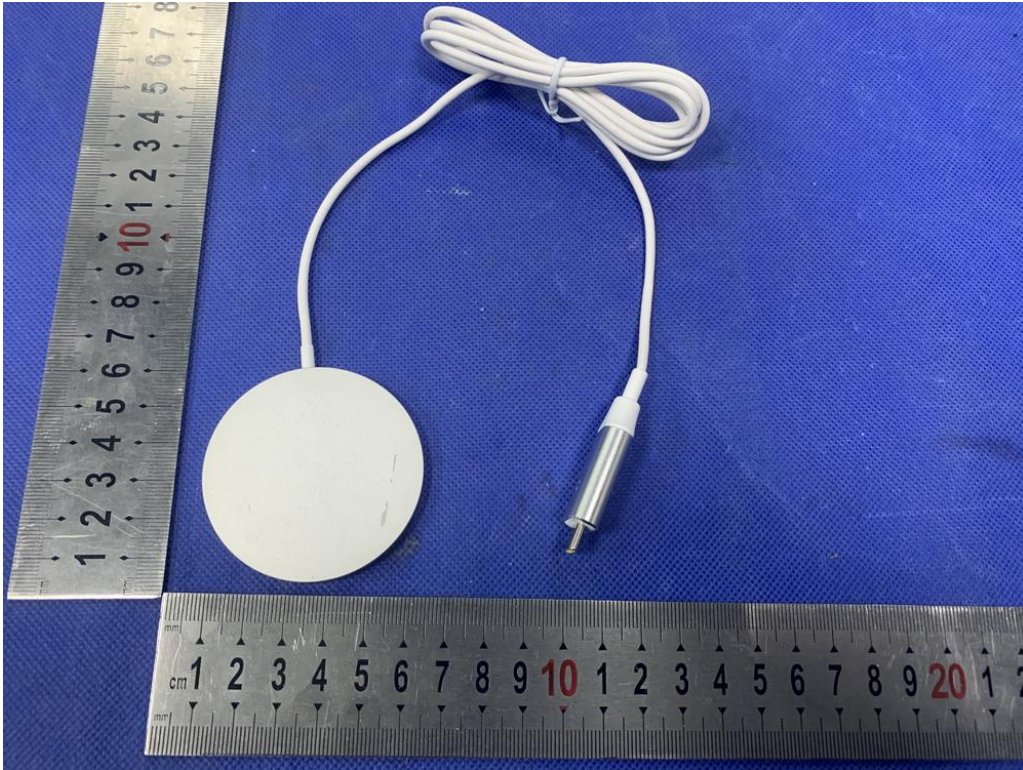
Model: SK-SW15-009C





Model: SK-SW15-010C





-----The end-----