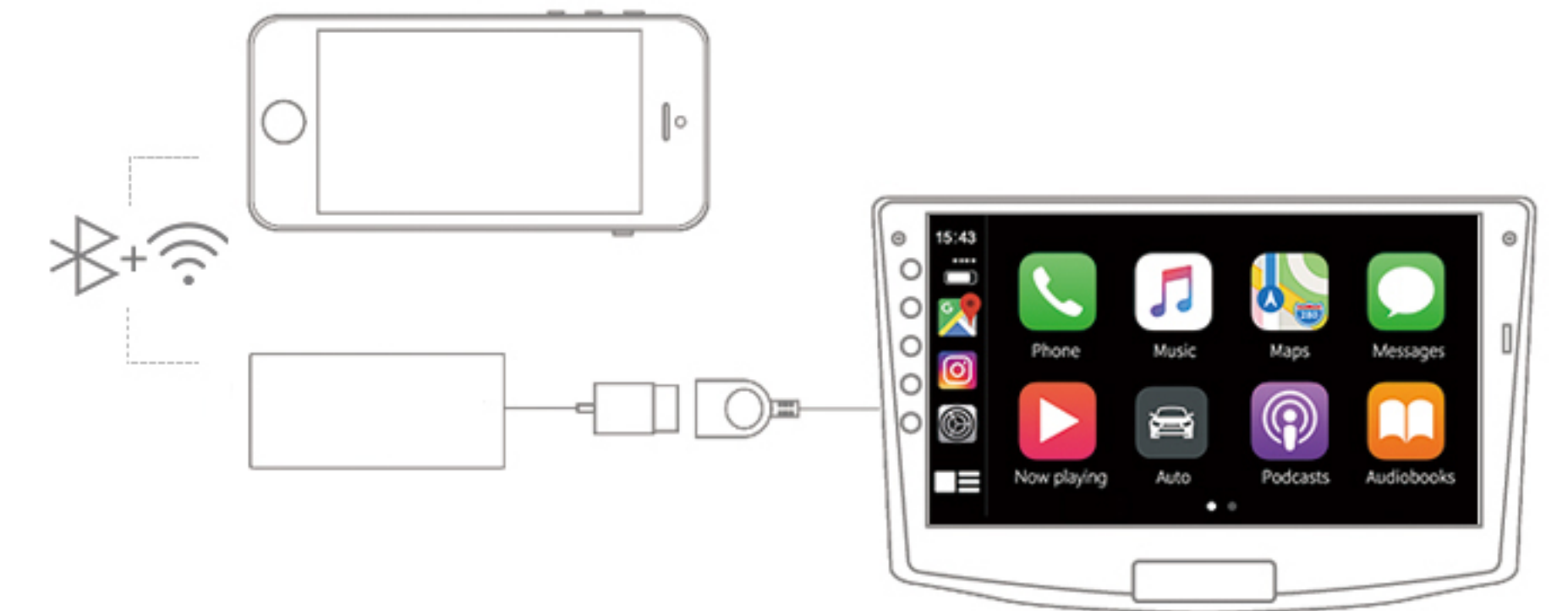


INSTRUCTION MANUAL

Connection diagram

iPhone connection (wireless & wired)



Android phone connection (wired)



Power parameters

- ◆ Input DC 5V 1~2.1A Output DC 5V 0.8~2A
- ◆ power consumption:0.25W
- ◆ compatible resolution:

screen ratio			
	800*480 / 1024*600 / 1280*720 / 1920*1080	768*1024 / 800*1280 / 1080*1920	

Application scope

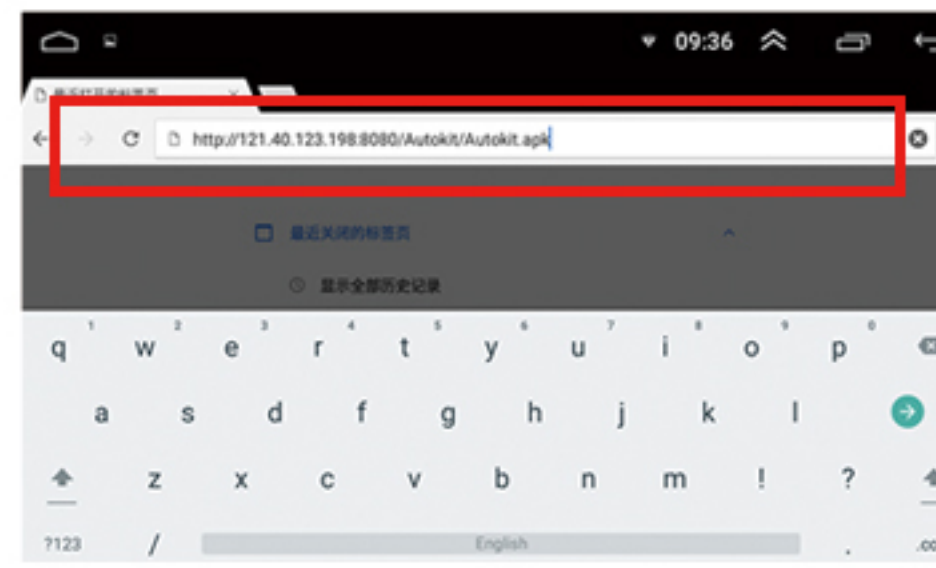
- ◆ Support iPhone 5 and above systems, apply IOS 10 or more. Support Android AUTO feature phones.
- ◆ Supported Car Models
Android car audio system 4.2 and above.

Download and install APK

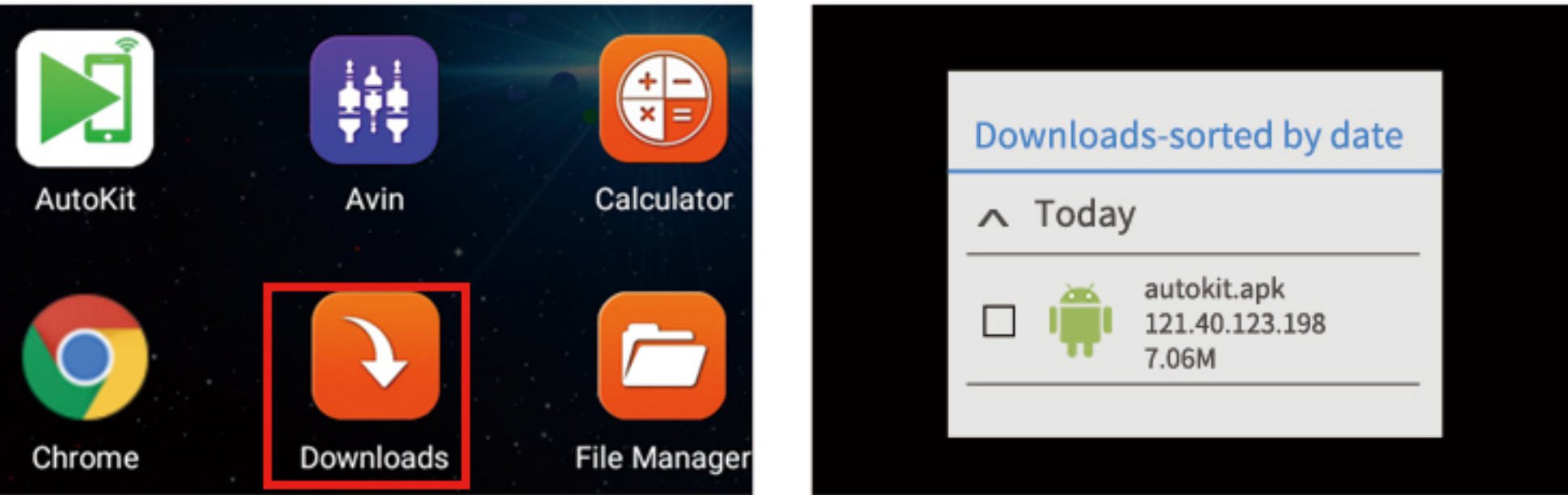
The address of downloading apk: <http://121.40.123.198:8080/Autokit/Autokit.apk>

Method 1:Downloading the APK on Car Browser

1.Clicking the browser on the car, enter the download link, and download APK.

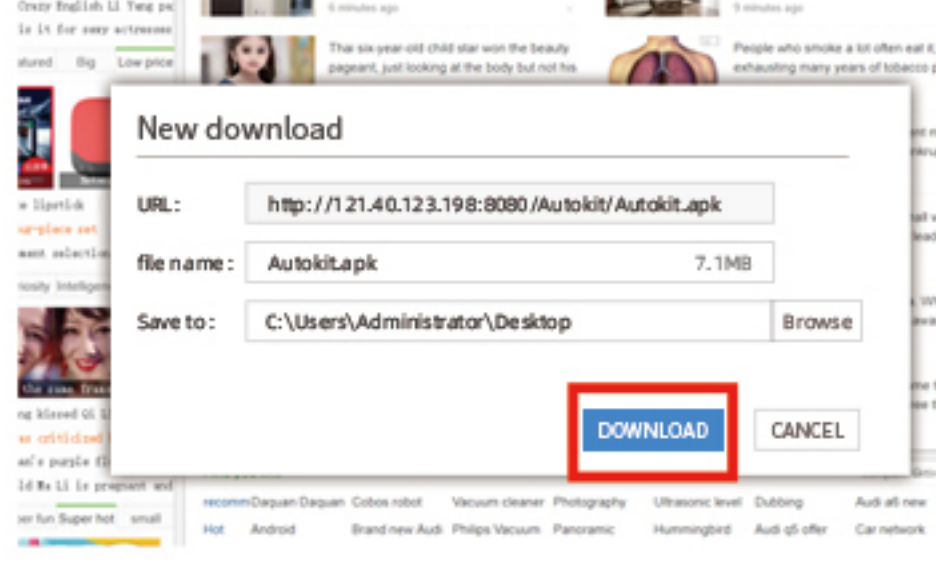


2. Clicking the "Download Directory" to find the downloaded APK file and click Installation.

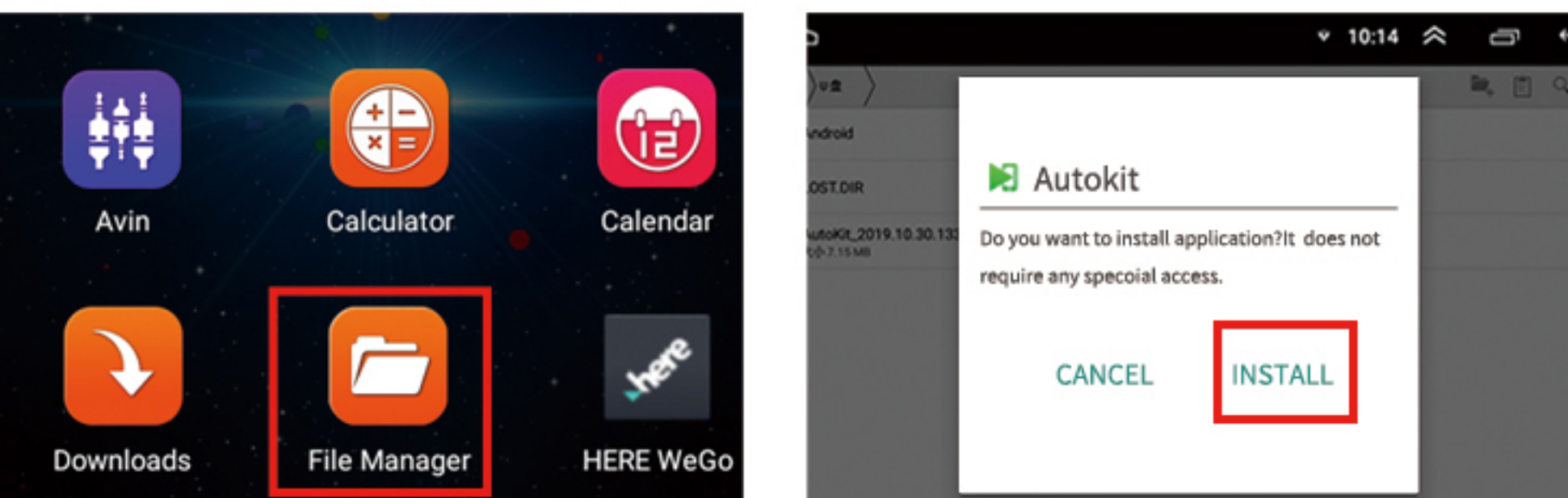


Method 2:Download the APK on your computer, copy it to a USB flash drive and install.

1. Enter the download address on your computer browser, downloading the APK to your computer, and copy it to a USB flash drive.

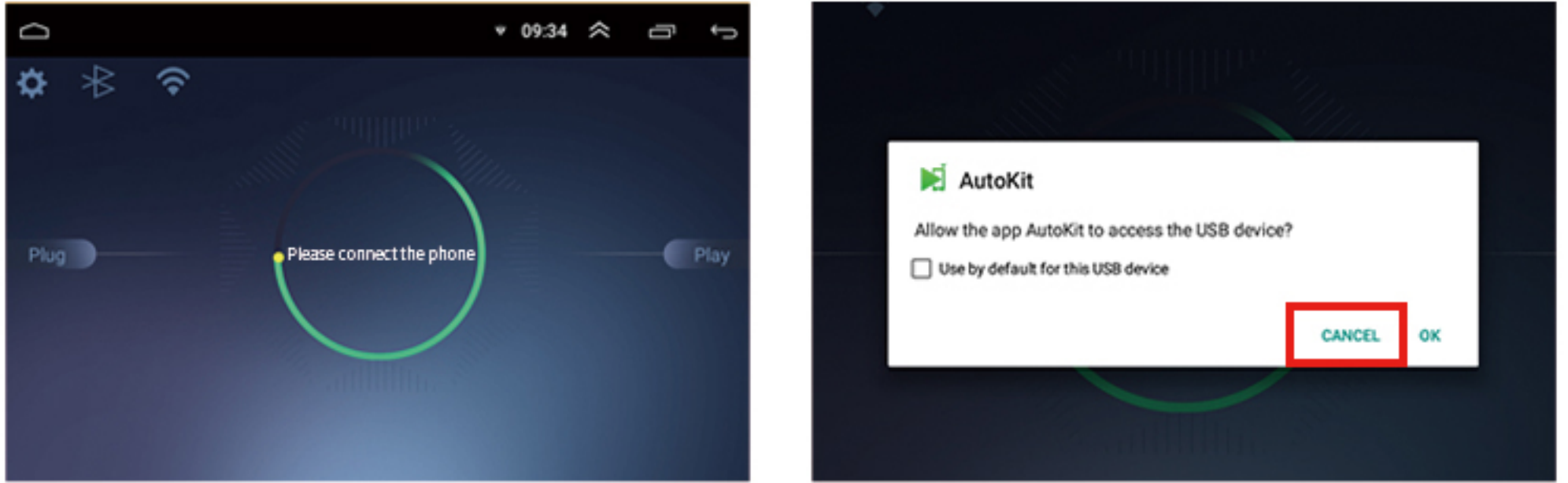


2. Insert the U disk into the USB interface of the car, find the U disk directory in the "File Manager", and click the APK file to install it.



Wireless dongle (Bluetooth 、 Wifi and USB cable connection)

1.First click into the APK and follow the prompts to insert the USB box into the navigator.



2.Open the mobile phone Wifi and Bluetooth ,find AutoKit signal on the Bluetooth interface, click and confirm to use carplay.



Wired dongle (USB cable connection)

1.Insert the USB box into the navigator.
2.Connect the iPhone to the product with a phone cable and you can enter Carplay.

Note: The wired dongle cannot use Bluetooth and Wifi connections



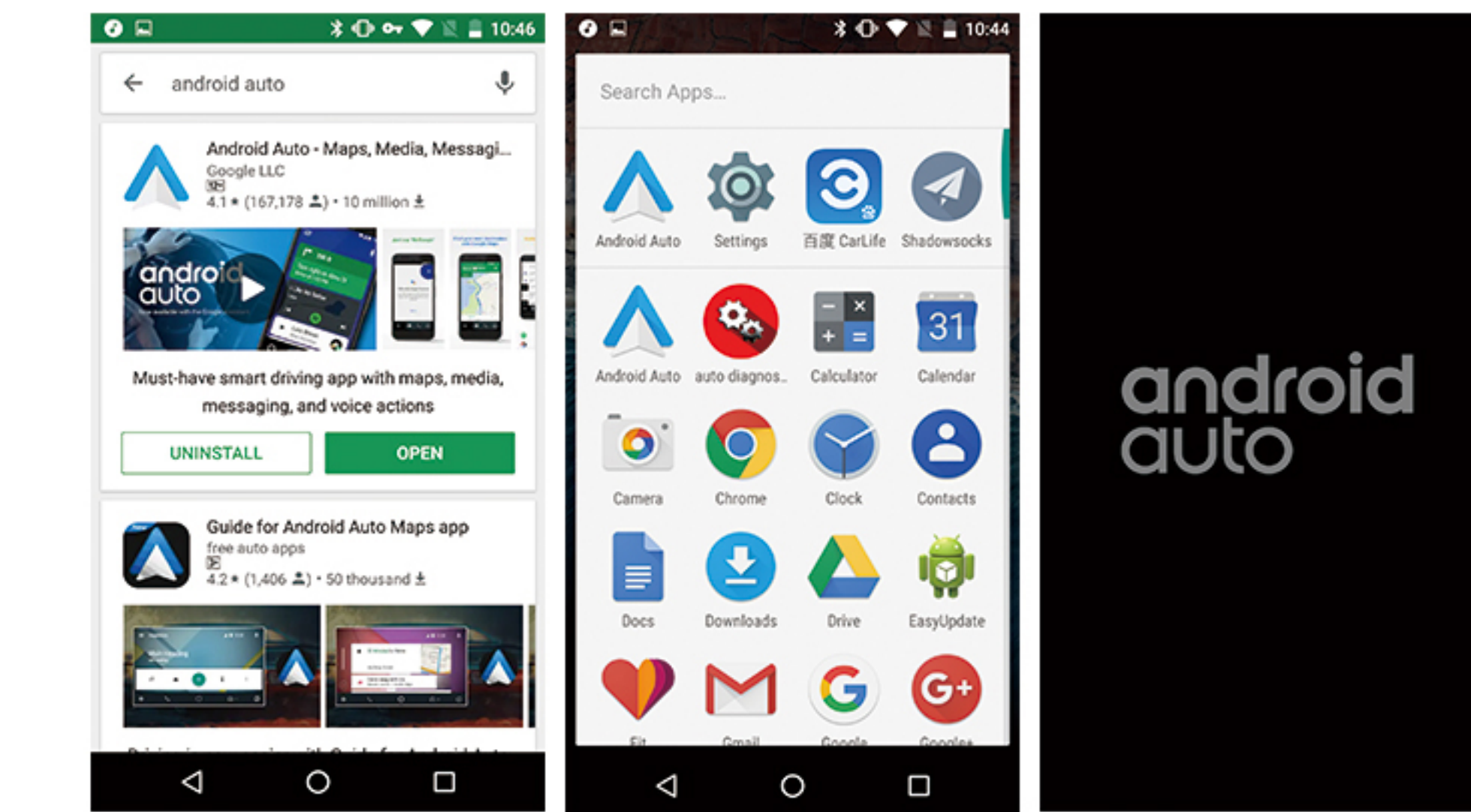
APK interface icon description

- ⚙ You can select the Working Mode and Language; check the Version Date; Online Upgrade, etc.
- 📶 You can check the signal of the connected phone.If you need to re-pair the Bluetooth signal, press and hold the signal to delete it.

Android Auto (USB data cable connection)

Android Auto

- 1.From the Google Play to download and install Android Auto.
- 2.Check the Android Auto operating environment.And Update Google services.
- 3.Connect USB Cable.



More:

Carplay: <https://www.apple.com/ios/carplay/>

Android Auto: <https://www.android.com/auto/>

Remark:Please use the original cell phone data connection,this is very important.

Here may be mentioned other company's trademark, the picture may be different from the actual, please prevail in kind, product specifications are subject to change without notice.

Products subsidiary APP, product packaging acquire Download.

Detailed explanation of common problems

How to confirm whether the car is supported or not?

Prepare U disk, format it as FAT32, Install Autokit in your car screen via U disk, go to Settings>Environmental Detection, all three are "✓", you can use our products.

The Apple CarPlay and Android Mirroring works normally. Why can't the Android Auto works abnormally?

The phone needs to support the Android Auto function, and it requires a google framework to run the Android Auto on the phone. (If your country and areas are not released and supported by Google Android Auto, then you are also not able to use Android Auto. This can be found in the Google official website. The mainland of China is not supported).

The wired CarPlay is dropped connection. (Disconnected between the phone and the box)

1. Ensure that the data cable used are original or MFI certified.
2. Enter settings > advanced settings > charging mode, set to weak (turn off mobile phone charging).

The box is often disconnected with the car screen.

- 1.Check whether the car machine has an optional version of the USB protocol, if it does , choose 2.0 .
2. Check the USB extension cable whether there is any transfer in the middle, and the USB wire shall not use the HUB and the wire length not to exceed 80CM.

Wireless CarPlay can not be connected.

1. Simultaneously verify whether the USB connection can be connected;
2. Check if the mobile phone has access restrictions turned on, make sure that the phone's WIFI in working state; and if you missed the connection tip when connected the dongle to Bluetooth: click "Enable Wireless CarPlay"; click "!" of the Bluetooth on the mobile phone to select the CarPlay icon.
- 3.Repair the phone

(1) Delete the pairing method:

① Click "WIFI icon" in the upper left corner of the Autokit APK main interface; long press and delete phone' s name .

② Ignore the current Bluetooth name on the phone.

(2) Wireless connection method:

① Search for the device name by Bluetooth on the mobile phone.

The device name is displayed under the Bluetooth icon in the upper left corner of the software; Enter the pairing code: 0000.

- ② Select "Enable Wireless CarPlay" tips which shows on the mobile phone.
- ③ When tips up: “whether to use Carplay on the lock screen” , select “Allow” .
- ④ Restart the phone.

Stuck after connected.

- 1.Set work model to compatible,and set render model in advanced setting.(Note,Please set it separately and compare them if works)
- 2.If your phone is IOS13 and above,Please update AutoKit Apk to the latest version.

No sound in Microphone.

- 1.Please turn off “Voice assistant” in your Android navigation system.
- 2.If you can not use original MIC of your radio.(You can purchase our product the one built-in MIC)
- 3.Android 4.4 system Below,You should root your system of Android head unit,and set AutoKit Apk to system class application.

No working at all when product plugged.

- 1.Runs detective model in AutoKit Apk,To make sure if USB flash drive can be detected.
- 2.Try another USB port of your car.
- 3.Please do not use HUB device.
- 4.Root your system of Android head unit,and set AutoKit Apk to system class application.

Speed mode, Fluent mode, Compatible mode.

Speed mode uses 60FPS hard solution, Fluent mode uses 30FPS hard solution, and compatibility mode uses 24FPS soft solution.

The car screen is blank after the phone is connected.

1. Turn off the "Handbrake Settings" of the car or turn on "Watching videos while driving".
2. Set "Run Mode" or "Rendering Mode".

Mobile phone charging slowly

1. The power supply of the product and the mobile phone both from the USB interface of the vehicle, which is affected by the power supply capacity of the original vehicle.
2. The product's own power consumption, wired version: 5V / 0.08A, wireless version: 5V / 0.12A.

No sound on the call, no sound from the other party.

- 1.The retail version cannot obtain the Bluetooth status of the original car. Please disconnect the Bluetooth device when the mobile phone is in use.
- 2.Turn off the voice assistant function of the car.

FCC WARNING:

This device complies with part 15 of the FCC Rules. Operation is subject to the following two conditions: (1) this device may not cause harmful interference, and (2) this device must accept any interference received, including interference that may cause undesired operation.

Any changes or modifications not expressly approved by the party responsible for compliance could void the user's authority to operate the equipment.

NOTE: This equipment has been tested and found to comply with the limits for a Class B digital device, pursuant to Part 15 of the FCC Rules. These limits are designed to provide reasonable protection against harmful interference in a residential installation. This equipment generates, uses and can radiate radio frequency energy and, if not installed and used in accordance with the instructions, may cause harmful interference to radio communications. However, there is no guarantee that interference will not occur in a particular installation.

If this equipment does cause harmful interference to radio or television reception, which can be determined by turning the equipment off and on, the user is encouraged to try to correct the interference by one or more of the following measures:

- Reorient or relocate the receiving antenna.
 - Increase the separation between the equipment and receiver.
 - Connect the equipment into an outlet on a circuit different from that to which the receiver is connected.
 - Consult the dealer or an experienced radio/TV technician for help.
- To maintain compliance with FCC' s RF Exposure guidelines, This equipment should be installed and operated with minimum distance between 20cm the radiator your body: Use only the supplied antenna.
FCC ID:2AYC2-CPC200

Warning: Changes or modifications to this unit not expressly approved by the part responsible for compliance could void the user' s authority to operate the equipment.