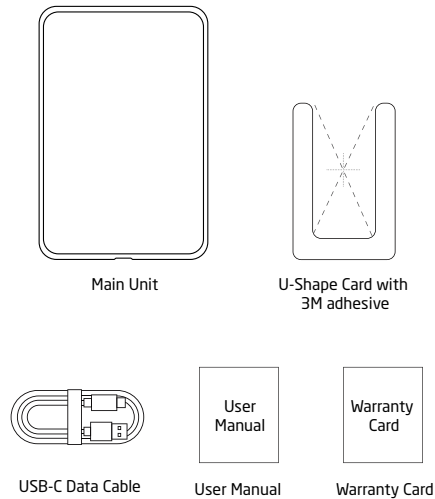




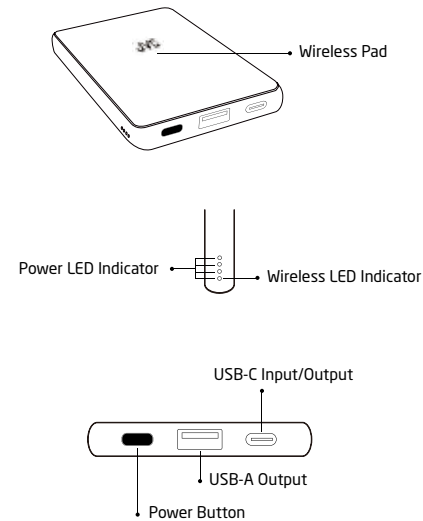
WIRELESS POWER BANK
BH-QPB50



Product Description
—Packing list



Technical Description



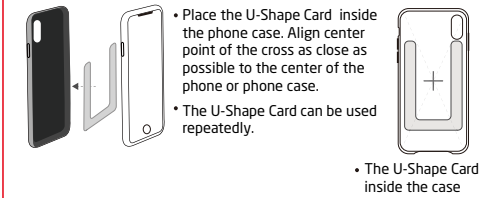
General Information

This manual contains information on how to use the power bank and about personal safety when using it. Please carefully read and understand all the instructions before use. Failure to follow all instructions and warnings may result in fire, electric shock or other injury or damage. Please retain the instruction leaflet within this pack for advice on how to safely use and maintain the product and forward it to other users. Pro-User accepts no liability for direct or indirect damage caused by faulty assembly or connection, a faulty usage, a usage of altered units or units that are known as damaged, a usage for purposes other than described and especially caused by failure to follow these instructions.

Safety

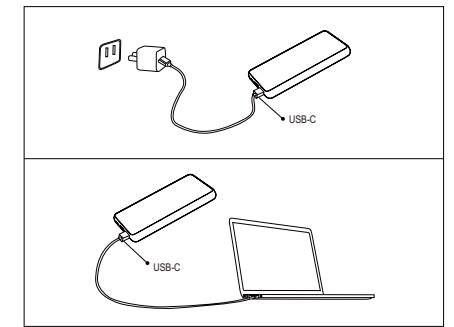
- Electrical devices are not toys. Keep the product away from children.
- Only use the product as intended and for purposes described in the manual.
- After opening the package, examine all parts for visible damage. If you have found any damage, please contact the company you purchased this unit from.
- Do not throw, tap or shake the product.
- Do not attempt to disassemble the product.
- Do not damage or puncture the casing of the power bank. This may cause over-heating, fire or an explosion.
- Do not overcharge the product or allow the battery to completely discharge.
- Do not put any bank cards or similar cards with magnetic strips, or other magnetically sensitive objects, on the product. The data on the cards could be damaged or deleted.
- Do not dispose of the power bank in a fire because they may explode.
- Do not attempt to charge the product with battery exposed or case broken, and do not charge the product that are incompatible with this product.
- When stored over a long period of time, batteries should be charged regularly (at least every three months).
- Avoid storing, charging or using batteries in extreme temperatures.
- When charging, the environment temperature shall not be more than 40°C.

Usage



Charging the power bank:

1. Use the charging cable supplied to charge the power bank from an AC adapter's USB, or from any other USB resources.
2. Charge the Power Bank fully before using it for the first time.



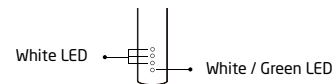
Charging other devices using the power bank:

1. The power bank can charge three devices at the same time including two devices through USB-C & USB-A output, and one device through wireless pad.
2. Charging with cable: Find the suitable charging cables to connect smart phones or digital devices and the power bank. Charging will commence automatically.
 - Wireless charging: Move your smart phone or digital device with wireless charging function close to the wireless pad (see page 3), the magnetic attraction will automatically locate the phone. Press the power button once, then charging will commence automatically.
3. To stop charging, you can press the power button for a few seconds. Or simply pull out the charging device, then the product will stop working automatically.

NOTE:

- This power bank has pass through function, i.e. it can charge other devices while it is charging.
- During discharging, the LED indicator will be always on to show the remaining capacity. When in low-battery mode, white LED indicator will start flashing, then please charge the power bank as soon as possible.

Indicator Status:



Mode	LED Indicator
Self-charging	Charging: white LED flashing Complete charged: white LEDs steady on
Discharging (Regular Mode)	White LED(s) on
Discharging (Wireless Mode)	Green LED steady on, white LED(s) on
Capacity Status	Full: white LED(s) on Low: white LED flashing No power: all LEDs off

⚠ WARNING

1. Only use suitable charging devices or USB connections for charging.
2. Never connect the charging cable of the Power Bank to both the input and output at the same time. This could damage the battery.

Product Specification

Size: approx. 117x68x12mm
Color: Black
Charging cable: Length approx. 300mm, USB-C Data Cable
Material: 2.5D tempered glass + ABS + metal
Input:
USB-C: 5Vdc=3A
Output:
USB-C: 5Vdc=3A
USB-A: 5Vdc=2.4A
Wireless: 5W
Max. Total Output: 1.5W
Capacity: approx. 5,000mAh
Working temperature: 10 °C to 40 °C
Electrical Safeguards: Protection against: overheat, overcharge, overcurrent

Cleaning and Maintenance

- Please keep the product dry. If the product is wet, please use a soft cloth to wipe it clean as soon as possible.
- Please use the clean, soft and dry cloth or brush to clean the surface of the product.
- When not in use, please store the product in a dry environment and protect it from direct sunlight, heat and moisture.



ATTENTION

The product you have purchased is powered by rechargeable battery that is recyclable. Please call 1-800-8-BATTERY for information on how to recycle this battery.

FCC Warning

Caution: Changes or modifications not expressly approved by the party responsible for compliance could void the user's authority to operate the equipment. Risk of Fire and Burns. Do Not Open, Crush, Heat Above 60°C or Incinerate.

NOTE: This equipment has been tested and found to comply with the limits for a wireless power charger, pursuant to Part 18 of the FCC Rules. These limits are designed to provide reasonable protection against harmful interference in a residential installation. This equipment generates, uses and can radiate radio frequency energy and, if not installed and used in accordance with the instructions, may cause harmful interference to radio communications. However, there is no guarantee that interference will not occur in a particular installation. If this equipment does cause harmful interference to radio or television reception, which can be determined by turning the equipment off and on, the user is encouraged to try to correct the interference by one or more of the following measures:

- Reorient or relocate the receiving antenna.
- Increase the separation between the equipment and receiver.
- Connect the equipment into an outlet on a circuit different from that to which the receiver is connected.
- Consult the dealer or an experienced radio/TV technician for help.

The device has been evaluated to meet general RF exposure requirement.

To maintain compliance with FCC's RF exposure guidelines, this equipment should be installed and operated with a minimum distance of 20cm between the radiator and your body.

For Customer Use:
Enter the Model No. and Serial No. (on the rating label of unit) below. Retain this information for future reference.
Model No. _____
Serial No. _____

Supplier's Declaration of Conformity
Model Number : BH-QPB50
Trade Name : JVC
Responsible party : JVC/KENWOOD USA Corporation
Address : 510 Valley Road, Suite 203 Wayne, NJ 07470
Telephone Number : 973-311-5000
This device complies with part 15 of the FCC Rules. Operation is subject to the following two conditions
(1) This device may not cause harmful interference, and
(2) this device must accept any interference received, including interference that may cause undesired operation.