



**MODEL NO. RPJ133-B**  
**Home Theater Projector**  
**INSTRUCTION MANUAL**



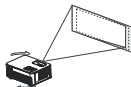
**PLEASE READ BEFORE OPERATING THIS EQUIPMENT**

This product has been manufactured and sold under the responsibility of Curtis International Ltd. RCA, the RCA logo, the two dogs (Nipper and Chipper) logo, are registered trademarks or trademarks of Technicolor (S.A.) or its affiliates and are used under license by Curtis International Ltd. ROKU, STREAMING STICK and the ROKU logo are the trademarks or registered trademarks of Roku, Inc. Any other product, service, company, trade or product name and logo referenced herein are neither endorsed nor sponsored by Technicolor (S.A.) or its Affiliates.

**Ideal for dark viewing environments for optimal performance.**  
**Please note: Projector brightness is measured in ANSI lumens.**  
**Your viewing environment is the deciding factor on how many lumens your projector needs.**

**To reduce Image Distortion**

- Move the projector as close to the center of the screen as possible.
- The light beam from the projector should be perpendicular to the screen for a rectangular or square image.



**Distance Between The Projector And Screen**

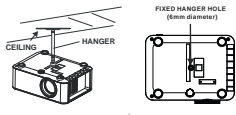
Measure the distance between the projector and where you want to position the screen. This is the projection distance for reference.

Distance	Screen Size
1.16m	36 inch
1.39m	45 inch
1.53m	50 inch
1.77m	60 inch
2.15m	72 inch
2.83m	100 inch
3.41m	120 inch
4.41m	150 inch

**Installing your Projector in the Ceiling**

When installing the projector in the ceiling, please purchase a projector mount recommended by an installation professional and follow the instructions that come with the mount. Before installing the projector in the ceiling, please check to make sure the ceiling structure can support the weight of the projector and the mount. If in doubt, please ask the advice from an installation professional.

**NOTE:** Projector mount and screw(s) not included



**Important Safety Instructions**

1. Read these instructions.
2. Keep these instructions.
3. Heed all warnings.
4. Follow all instructions.
5. Do not use this apparatus near water.
6. Clean only with a dry cloth.
7. Do not block any ventilation openings. Install in accordance with the manufacturer's instructions.
8. Do not install near any heat sources such as radiators, heat registers, stoves, or other apparatus (including amplifier) that product heat.
9. Protect the power cord from being walked on or pinched particularly at plugs, convenience receptacles, and the point where they exit from the apparatus.
10. Only use attachment/accessories specified by the manufacturer.
11. Unplug this apparatus during lightning storms or when unused for long periods of time.
12. Refer all servicing to qualified service personnel. Servicing is required when the apparatus has been damaged in any way, such as power-supply cord or plug is damaged, liquid has been spilled or objects have fallen into the apparatus, the apparatus has been exposed to rain or moisture, does not operate normally, or has been dropped.
13. Use only with a cart, stand, tripod, bracket, or table specified by the manufacturer or sold with the apparatus. When a cart is used, use caution when moving the cart/apparatus combination to avoid injury from tip-over.



**Additional Warnings and Precautions**

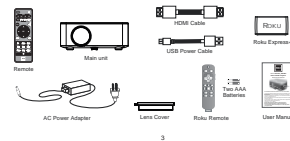
1. Do not look directly into the projector light.
2. Don't touch the projector lens.
3. Mains adapter is used as disconnect device and it should remain readily operable during intended use. In order to disconnect the apparatus from the mains completely, the mains plug should be disconnected from the mains socket outlet completely.
4. **CAUTION:** Use of controls or adjustments or performance of procedures other than those specified may result in hazardous radiation exposure.
5. **WARNING:** Changes or modified to this unit not expressly approved by the party responsible for compliance could void the user's authority to operate the equipment.
6. **WARNING:** Use of this unit near fluorescent lighting may cause interference regarding use of the remote. If the unit is displaying erratic behavior move away from any fluorescent lighting, as it may be the cause.
7. **WARNING:** Shock hazard - Do Not Open.
8. Caution and marking information is located at the rear or bottom of the apparatus.
9. **WARNING:** To reduce the risk of fire or electric shock, do not expose this apparatus to rain, moisture, dripping, or splashing.
10. Objects filled with liquids, such as vases, shall not be placed on the apparatus.

**FCC Warning**

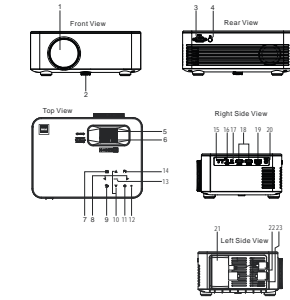
Any Changes or modifications not expressly approved by the party responsible for compliance could void the user's authority to operate the equipment. This device complies with Part 15 of the FCC rules. Operation is subject to the following two conditions: (1) this device may not cause harmful interference, and (2) this device must accept any interference received, including interference that may cause undesired operation. **NOTE:** This equipment has been tested and found to comply with the limits for a Class B digital device, pursuant to Part 15 of the FCC Rules. These limits are designed to provide reasonable protection against harmful interference in a residential installation. This equipment generates, uses, and can radiate radio frequency energy and, if not treated and used in accordance with the instructions, may cause harmful interference to radio communications. However, there is no guarantee that interference will not occur in a particular installation. If this equipment does cause harmful interference to radio or television reception, which can be determined by turning the equipment off and on, the user is encouraged to try to correct the interference by one or more of the following measures:

- Reorient or relocate the receiving antenna.
- Increase the separation between the equipment and receiver.
- Connect the equipment into an outlet on a circuit different from that to which the receiver is connected.
- Consult the dealer or an experienced radio/TV technician for help.
- This equipment complies with FCC radiation exposure limits set forth for an uncontrolled environment. This equipment should be installed and operated with minimum distance 20cm from the radiator & your body.
- This transmitter must not be co-located or operating in conjunction with any other antenna or transmitter.

**In The Box**

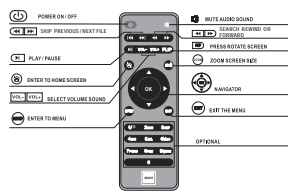


**Controls of Projector**



- |                      |   |
|----------------------|---|
| 1 LENS               | 12 POWER Indicator                        |
| 2 ANGLE ADJ. Knob    | 13 (Home) Button                          |
| 3 VGA IN Port        | 14 HOME Button                            |
| 4 IR Sensor          | 15 TF Card Slot                           |
| 5 FOCUS ADJ. Knob    | 16 Audio Out Jack                         |
| 6 KEYSTONE ADJ. Knob | 17 AV IN Jack                             |
| 7 MENU Button        | 18 HDMI 1 & 2 Ports                       |
| 8 < Vol > Buttons    | 19 USB 1 Port                             |
| 9 RETURN Button      | 20 DC IN Jack                             |
| 10 < V > Buttons     | 21 Roku Express+                          |
| 11 POWER Button      | 22 USB 2 (For powering the Roku Express+) |
|                      | 23 HDMI 3 (Roku Express+ Input)           |

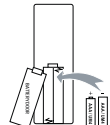
**Controls of Remote**



**Install / Remove Batteries of Remote**

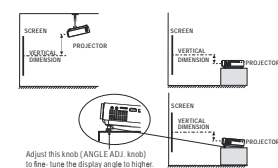
Remove the battery compartment cover on the back of your remote by carefully sliding to open. The battery cover can then be lifted away. Fit the correct batteries (not included), referring to the polarity markings. Finally, replace the cover.

- NOTES:**
- Batteries shall not be exposed to excessive heat such as placing under the sunlight or near a fire.
  - Please make sure the batteries are installed with their correct polarities.
  - Do not mix old and new batteries.
  - Use only the same type of batteries.
  - Do not dispose of the batteries in fire, battery may explode or leak.
  - Do not recharge a non-rechargeable battery.



**Adjust The Vertical Location**

Follow below picture to adjust the vertical location.

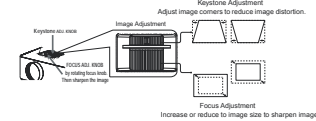


**Adjust The Focus And Keystone**

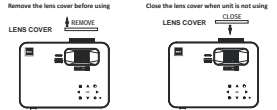
Follow below picture to adjust the focus and trapezoidal screen.

Adjust the focus by turning the knob while observing the image pixels near the center of the screen. Optimal focus is obtained when the pixels are clearly visible. Depending on the projected screen size, the focus near the screen edges may be less sharp than the screen center.

Keystone image is created when the projector lens is projected from above or below the center of the screen. Keystone correction restores the distorted image to a rectangular or square shape.

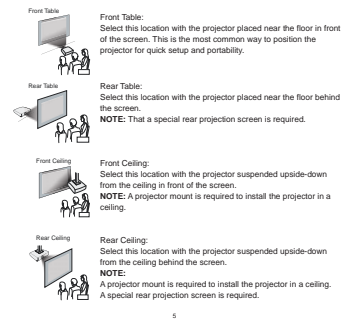


**Remove & Close The Lens Cover**



**Placing of Your Projector**

Your projector can be installed in four different configurations (see picture below):

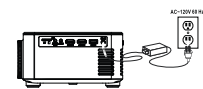


**Table of Contents**

Important Safety Instructions ..... P1  
 Additional Warnings and Precautions ..... P2  
 FCC Warning ..... P3  
 In The Box ..... P3  
 Table of Contents ..... P4  
 Remove & Close The Lens Cover ..... P5  
 Placing of Your Projector ..... P6  
 To Reduce Image Distortion ..... P6  
 Distance Between The Projector And Screen ..... P6  
 Installing your Projector in the Ceiling ..... P7  
 Adjust the Vertical Location ..... P7  
 Adjust the Focus And Keystone ..... P7  
 Controls of Remote ..... P8  
 Install / Remove Batteries of Remote ..... P8  
 Controls of Projector ..... P9  
 Install Power Adapter ..... P10  
 Main Button Operation ..... P10  
 Setup / Install the Roku Express+ ..... P11  
 Connect HDMI show The Image On Projector Screen ..... P12  
 Connect AV Show The Image On Projector Screen ..... P12  
 Connect VGA Show The Image On Projector Screen ..... P13  
 Connect Audio Output (Aux Out / Line Out / Earphones) ..... P14  
 Install USB Device And TF card (Micro SD Card) ..... P15  
 Using TF Card and USB Playback (Media Player) ..... P15  
 Using Bluetooth Playback ..... P16  
 Using Projector Menu 1 ..... P17  
 Using Projector Menu 2 ..... P18  
 Using Projector Menu 3 ..... P18  
 Specifications ..... P19  
 Warranty Card ..... P20

**Install Power Adapter**

Follow below picture to connect power adapter  
 Connect small end of adapter FIRST. Plug the adapter body to power outlet.



**WARNING:**  
 Before connecting to the power supply, ensure that the supply corresponds to the information on the rating label at the back of the apparatus.

**Main Button Operation**

- Press the button to switch on unit, press again to standby.
- HOME - Press the button to select input source.
- MENU - Press the button to enter projector menu.
- Press the buttons to navigate and select screen item of menu.
- EXIT - Press the button to return to previous status or exit the menu.
- Press the buttons to fast search forward and rewind on USB / TF
- Press the buttons to search next or previous file on USB / TF
- VOL+ / VOL- - Press the buttons to select the sound level on the remote.
- Press the button to play/pause the playback file on USB / TF card.
- Press the button to rotate / mirror projector screen on the remote
- Press the button to select image scale on the remote
- Press to mute the audio. Press again to resume.

**Setup /Install the Roku Express+**

Make your Projector smart! Stream almost anything across thousands of free or paid streaming channels including hit movies, popular shows, live TV, news, sports and more.

- Step 1: Install the Roku Express+.**  
Turn off the unit, use the included HDMI cable to plug into the HDMI port on your Roku Express+ port and the other end plug into the HDMI port on your projector.
- Step 2: Connect to power**  
Use the included USB power cable to plug into the USB port on your Roku Express+ and the other end to plug into the USB2 port on your projector.

**Note: Unit has already installed the Roku Express+ before shipment.**

Press the (O) button to turn on the unit. The projector home screen will appear. Use the arrow buttons to select the HDMI3 input.

- Step 3: Pair your Roku® remote**  
On the back side of the remote, slide open the battery cover. Insert included batteries placing the negative(-) ends in first. Follow the on-screen instruction, your remote should pair your Roku Express+ automatically. For help pairing your remote, visit go.roku.com/remotes-help

**Note:** To operate your Roku Express+, you must use the included Roku remote.

- Step 4: Complete on-screen setup and start streaming**  
Tip: Have your wireless network name and password handy.

Follow the instructions on your TV screen. Activate your streaming player by using your computer or smartphone to link to a Roku account. You need a Roku account to activate your Roku Express+ and access entertainment across thousands of streaming channels.

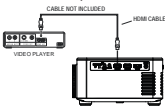
**Note:** Roku never charges for activation support. Roku accounts are free and while a valid credit card number is not required to create a Roku account, saving your credit card information makes renting, purchasing, and subscribing to entertainment from the Roku Channel Store fast and convenient.

Once connected to your account, your streaming player will automatically update with the latest software, and you can start streaming immediately. If you aren't ready to connect your streaming player to a wireless network, you can still use the projector.

### Connect HDMI Show The Image On Projector Screen

Refer to the following picture to connect a set top box, a BD/DVD player or a streaming player to the HDMI input.

1. Press the **Q** button to standby mode before connect HDMI cable.
2. After connection, press the **Q** button to turn on unit and power indicator will light GREEN
3. Press the **➢** SOURCE button to home screen, use **[F1]** buttons to select HDMI 1 or HDMI 2 icon and press the **Q** button to enter HDMI mode. The video from the connected device will be shown on projector screen.
4. Press the **Q** button to turn unit to standby.

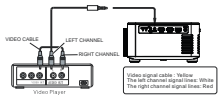


**Important Note:**  
If there is no sound from the internal speakers when playing media contents from a set top box, BD/DVD or streaming players connecting to the HDMI input, please check the set top box or the player's digital audio settings and make sure it is set to "PCM Stereo" mode.

### Connect AV Show The Image On Projector Screen

Follow the below picture to connect AV cable and device.

1. Press the **Q** button to standby mode before connect AV cable.
2. After connect, press the **Q** button to turn on unit and power indicator will light GREEN
3. Press the **➢** SOURCE button to home screen, use **[F1]** buttons to select AV icon and press the **Q** button to enter AV mode. The video of AV device will show on projector screen.
4. Press the **Q** button to turn the unit to standby.



### Using Projector Menu 2

Press **≡** / MENU button to enter projector menu, press **←/→** buttons to select **SOUND** menu.

**Sound Mode Standard**  
Balance 0  
Auto Volume Off  
Bassboost Off

Use **←/→** to select different sound effect Standard / Music / Movie / Sports / User. Use **▲/▼** to select and **←/→** to adjust Bass / Treble digit if those User item. Follow below figure to set digit.

**Balance 0**  
Use **←/→** to select Balance level to -50 to +50.

**Auto Turn Off**  
Press **Q** buttons to select On / Off.

**Bass Off**  
Press **Q** buttons to select On / Off.

Sound Mode	User	Parameter
Treble		0-100
Bass		0-100

This sound menu showed on right upper of view screen.

### Using Projector Menu 3

Press **≡** / MENU button to enter projector menu, press **←/→** buttons to select **OPTION** menu.

**RSD Language English**  
Factory Default  
Color Range 0-255  
Software Update OFF

**RSD Language English**  
Factory Default  
Color Range 0-255  
Software Update OFF

Use **▲/▼** or **←/→** button to select different language. Follow below figure

Use **←/→** buttons to select 'Y' or 'N'. If choose "Y" that your unit will go to factory default setting.

Press **Q** buttons repeatedly to select different Color Range in HDMI mode only

For service center use only.

OSD Language	English	French	Magyar	Polski	Romano	Suomi	Korean
OSD Language	English	French	Magyar	Polski	Romano	Suomi	Korean
Dutch	Dansk	Italiano	Norsk	Pycck	Svensk	Tamil	Українська

This OPTION menu showed on right upper of viewing screen.

### Connect VGA Show The Image On Projector Screen

Follow the below picture to connect VGA cable and device.

1. Press the **Q** button to standby mode before connect VGA cable.
2. After connect, press the **Q** button to turn on unit and power indicator will light GREEN.
3. In home screen, use **[F1]** buttons to select VGA icon and press the **Q** button to enter VGA mode. The video of VGA device will show on projector screen.
4. Press the **Q** button to turn the unit to standby.

**Important Note:**  
If there is no sound from the stereo audio output when playing media contents from a set top box, BD/DVD or streaming players connecting to the HDMI input, please check the set top box or the player's digital audio settings and make sure it is set to "PCM Stereo" mode.

Please refer to the following table to adjust the output signal from computer

Type	Resolution	Frequency	Field Frequency
PC	VGA	31.5	60
		34.7	70
		37.9	72
		37.5	75
		31.4	50
		35.1	56
		37.9	60
PC	SVGA	46.6	70
		48.1	72
		45.0	75
		40.3	50
		48.4	50
PC	XGA	56.5	70
		40.3	50
		48.4	50

**NOTE:** VGA connections do not support audio. You will need to use the laptop or computer's connected speakers

### Specifications

Light Source Type	LED
Brightness Output	White light output ANSI: 168 Lumens White brightness output ANSI: 116 Lumens
Display Native Resolution	1280 x 720 RGB
HDMI Input Supported Video Resolution.	1080p, 1080i, 720p, 576i, 480p, and 480i
Power Consumption	80W
Included Adapter	Input AC100-240V, 50/60Hz Output DC26V, 2.7A
Projection Size	36-150 inch
Input Port	AV/ VGA / HDMI
USB Port	Support USB device up to 32GB Support format Mpeg1, Mpeg2, Mpeg4, mp3, Jpeg
TF Card	Support SD card up to 32GB Support format Mpeg1, Mpeg2, Mpeg4, mp3, Jpeg
Net Weight 1.4 KG	
Product Dimensions	240 x 184 x 96 mm

Specifications are typical, individual units might vary. They are subject to continuous improvement without notice and without incurring any obligation.

For service assistance and product information, please call: 1-800-968-9853. Pour obtenir assistance et information appelez: 1-800-968-9853.

Curis International Ltd.  
7046 BECKETT DRIVE, UNIT 15,  
MISSISSAUGA, ON, L5S 2A3  
www.curisinc.com

### Connect Audio Output ( Aux Out / Line Out / Earphones)

Follow the below picture to connect audio cable and device.

1. Press the **Q** button to standby of your projector before connection.
2. Use audio cable to connect follow the below figure.
3. After connect and turn on both units. Your projector sound from external device now.
4. After using, turn off both unit.

### Install USB Device And Tf card (Micro SD Card)

Follow the below picture to install USB and TF card  
Turn off the unit before install USB / TF card.

To make a warranty claim, do not return this product to the store. Please email [support@curis.com](mailto:support@curis.com) or call 1-800-968-9853.

### 90 day Warranty

This product is warranted to be free from defects in material and workmanship for a period of ninety (90) days from the date of original purchase. During this period, your exclusive remedy is repair or replacement of this product or component found to be defective, at our option; however, you are responsible for all costs associated with returning the product to us. If the product or component is no longer available, we will replace with a similar date of equal or greater value. Prior to a replacement being sent, the product must be rendered inoperable or returned to us.

This warranty does **not** cover glass, filters, wear from normal use, use not in conformity with the printed directions., or damage to the product resulting from accident, alteration, abuse, or misuse. This warranty extends only to the original consumer purchaser or gift recipient. Keep the original sales receipt, as proof of purchase is required to make a warranty claim. This warranty is void if the product is used for other than single-family household use or subjected to any voltage and waveform other than as on the specified rating on the label (e.g., 120V-60Hz).

We exclude all claims for special, incidental, and consequential damages caused by breach of express or implied warranty. All liability is limited to the amount of the purchase price. Every implied warranty, including any statutory warranty or condition of merchantability or fitness for a particular purpose, is disclaimed **except to the extent prohibited by law, in which case such warranty or condition is limited to the duration of this written warranty.** This warranty gives you specific legal rights. You may have other legal rights that vary depending on where you live. Some states or provinces do not allow limitations on implied warranties or special, incidental, or consequential damages, so the foregoing limitations may not apply to you.

For faster service, locate the model, type, and serial numbers on your appliance.

### Using Tf Card And USB Playback (Media Player)

Install USB / TF device:

1. Press the **Q** button to standby before install USB / TF card.
2. Install the USB device into USB port / Install the TF device into TF slot.
3. After install, press the **Q** button to turn on unit and the power indicator light GREEN.
4. In home screen, use **[F1]** buttons to select PHOTO / MUSIC / MOVIE icon and press the **Q** button to enter.
5. Use the **←/→** button to select C and press **Q** button to enter. Note: If both USB device and TF card install, unit will assign the first installed device as C and the second installed device as D.
6. Use **[F2]** buttons to search the correct file to preview and press the **Q** button to playback file.

**NOTE:** Remove USB / TF device, press the **Q** button to standby mode **FIRST**.

**Sub-Menu on Movie screen**

1. When movie playback, press the **Q** button and more function screen show on lower (figure 1).
2. Use the **←/→** button to select icon and press the **Q** button to play special function.

**Sub-Menu on Photo screen**

1. When photo playback, press the **Q** button and more function screen show on lower (figure 2).
2. Use the **←/→** button to select icon and press the **Q** button to play special function.

**Sub-Menu on Music screen**

1. When music playback, press the **Q** button and more function screen show on lower (figure 3).
2. Use the **←/→** button to select icon and press the **Q** button to play special function.

### Using Bluetooth Playback

Pairing is the term used when two Bluetooth devices are connected wirelessly for the first time. This allows the devices to see each other and sets up a one to one communication channel between both devices.

### Bluetooth Connection

1. Press the **Q** button to turn on unit.
2. Press the **≡** / MENU button to enter the menu screen.
3. Use the **←/→** button to **SOUND** menu as right side figure.
4. Use the **▲/▼** button to select Bluetooth column.
5. Press the **Q** button to select "ON".
6. Turn on your External Bluetooth Speaker and select your unit and external Bluetooth speaker connected.
7. A few seconds, you hearing "so" sound that you unit and external Bluetooth speaker connected.
8. After connection completed, the unit sound to External Bluetooth speaker.



Disconnect the Bluetooth

1. Press the **≡** / MENU button to enter the menu screen.
2. Use the **←/→** button to select Sound menu.
3. Use the **▲/▼** button to select Bluetooth column.
4. Press the **Q** button to turn "Off" that the Bluetooth disconnect.

### Using Projector Menu 1

Press **≡** / MENU button to enter projector menu, press **←/→** buttons to select **PICTURE** menu.

This Picture menu showed on right upper of view screen.

Use **←/→** to select different picture effect to Medium / Soft / User / Valid. Use **▲/▼** or **←/→** to select Contrast / Brightness / Color / Sharpness digit if those User item. Follow below figure.

Use **←/→** to select different color temperature to Medium / Warm / User / Cool. Use **▲/▼** or **←/→** to select Red / Green / Blue digit if those User item. Follow below figure.

Use **▲/▼** buttons to select screen ratio AUTO / 4:3 / 16:9. Follow below figure.

Use **▲/▼** buttons to select Off / Low / Middle / High / Default. Follow below figure.

Use **←/→** buttons to select AutoAdjust / Horizon Pos. / Vertical Pos. / Size / Phase. Use **▲/▼** or **←/→** to select Horizon Pos. / Vertical Pos. / Size / Phase digit. Follow below figure.

Use **←/→** button to select different zoom scale digit 75% - 100%. Follow below figure.

Press **Q** buttons repeatedly to select Front / Rear Ceiling / Front Ceiling / Rear

Picture Mode	Parameter	Color temper. (temperature)
Customer define	Parameter	Parameter
red	0-100	0-100
Brightness	0-100	0-100
Color	0-100	0-100
Sharpness	0-100	0-100

Aspect Ratio	Parameter	PC Setting. (Movie / VGA mode)
AV mode	Auto, 4:3, 16:9, Zoom1, Zoom2	Customer define (Press ←/→ to set)
HDMI mode	Auto, 4:3, 16:9, Zoom1, Zoom2, Just Scan, Point to Point	Horizon Pos. 0-100
VGA mode	Auto, 4:3, 16:9, Point To Point	Vertical Pos. 0-100
USB mode	Auto, 4:3, 16:9	Size 0-100
TF Card mode	Auto, 4:3, 16:9	Phase 0-100

**Note:** PC setting menu is activated in VGA mode only.