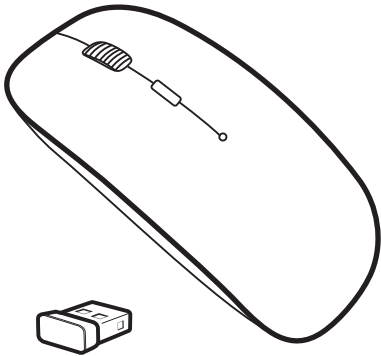


Slim Wireless Mouse ASST2

Instruction Manual

Item Number: MU21008



Contents included:

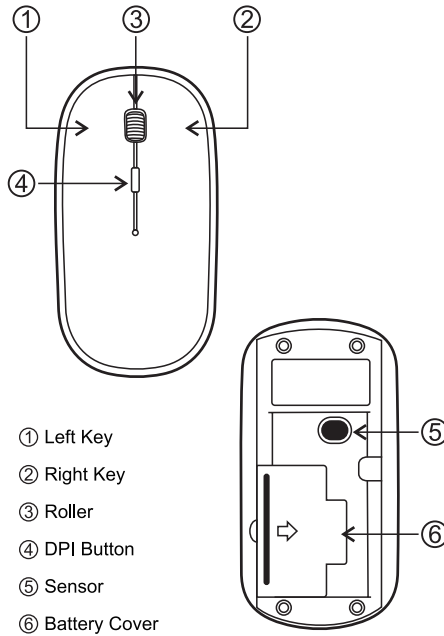
- 1pc Wireless Mouse
- 1pc USB Receiver (Stored in the battery compartment)

* Requires Two (2) 1.5A AAA Alkaline Batteries (Not Included)

Distributed by 1616 Holdings, Inc.
701 Market Street, Suite 200
Philadelphia, PA 19106
Made in China



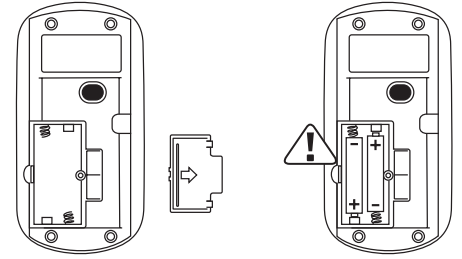
Part Name



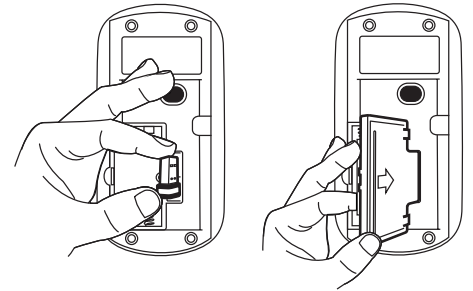
- ① Left Key
- ② Right Key
- ③ Roller
- ④ DPI Button
- ⑤ Sensor
- ⑥ Battery Cover

How To Operate

1. Open the Battery Cover ⑥ on the battery compartment, insert 2pcs "AAA" batteries (not included, need to purchase additionally), and remind to check for the correct polarity (+/-).

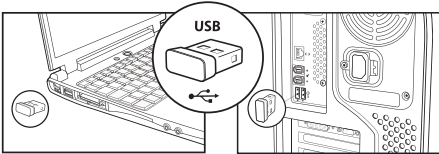


2. Take out the USB receiver and secure the Battery Cover ⑥ to the battery compartment.



Front

3. Turn on your computer and connect the USB receiver to the USB port of your computer, wait a minute until the device has been automatically detected and installed (Plug and Play). When installation is completed, you can use the device.



4. The DPI switch button allows you to switch between the different DPI-modes (1000DPI, 1200DPI and 1600DPI).

NOTE: To avoid any loss of this receiver during transport, we suggest to insert the receiver into the battery compartment on the bottom of this device when it isn't in use.

Product Specification

- Key number: 4D
- Receiver: USB2.0
- DPI: 800-1200-1600
- Operating temperature: -5°C ~ 40°C
- Relative humidity: 20% ~ 90%
- Maximum speed: 28in/sec
- response rate: 125Hz
- Operated by 2pcs AAA batteries (not included, need to purchase additionally)
- Working current: <10mA
- Product Size: 4.45"x2.2"x 1"
- Compatible system: WinXP/Win7/Win8/Win10/Macos

Problem Reference

1. **Mouse does not respond**
 - Is the mouse SENSOR light on?
(No light, check if the battery has electricity, and whether the positive and negative poles are reversed.)
 - Did the receiver recognize success?
(If identification failed, change a USB interface, Or reload the drive.)
2. **Overcoming**
 - Is the mouse and desktop smooth?
(If not please put it in smooth surface.)
 - Is the battery low?
(If the battery is low, please replace the battery.)

⚠ WARNING: TO AVOID BATTERY LEAKAGE

1. The batteries used with this product are small parts and should be kept away from small children who still put things in their mouths. If they are swallowed, promptly see a doctor and have the doctor phone American Association of Poison Control Centers (1-800-222-1222).
2. Always purchase the correct size and grade of battery most suitable for intended use.
3. Do not mix old and new batteries, alkaline, standard (Carbon - Zinc) or rechargeable (Nickel-cadmium) batteries.
4. Clean the battery contacts and those of the device prior to battery installation.
5. Ensure the batteries are installed correctly with the regard to polarity (+/-).
6. Always remove batteries if consumed or if product is to be left unused for a long time.

This device complies with part 15 of the FCC Rules. Operation is subject to the following two conditions: (1) this device may not cause harmful interference, and (2) this device must accept any interference received, including interference that may cause undesired operation.

- **"WARNING:** Changes or modifications to this unit not expressly approved by the party responsible for compliance could void the user's authority to operate the equipment."

- **"NOTE:** This equipment has been tested and found to comply with the limits for a Class B digital device, pursuant to Part 15 of the FCC Rules. These limits are designed to provide reasonable protection against harmful interference in a residential installation. This equipment generates, uses and can radiate radio frequency energy and, if not installed and used in accordance with the instructions, may cause harmful interference to radio communications.

However, there is no guarantee that interference will not occur in a particular installation. If this equipment does cause harmful interference to radio or television reception, which can be determined by turning the equipment off and on, the user is encouraged to try to correct the interference by one or more of the following measures:

- Reorient or relocate the receiving antenna.
- Increase the separation between the equipment and receiver.
- Connect the equipment into an outlet on a circuit different from that to which the receiver is connected. Consult the dealer or an experienced radio/TV technician for help."

Back