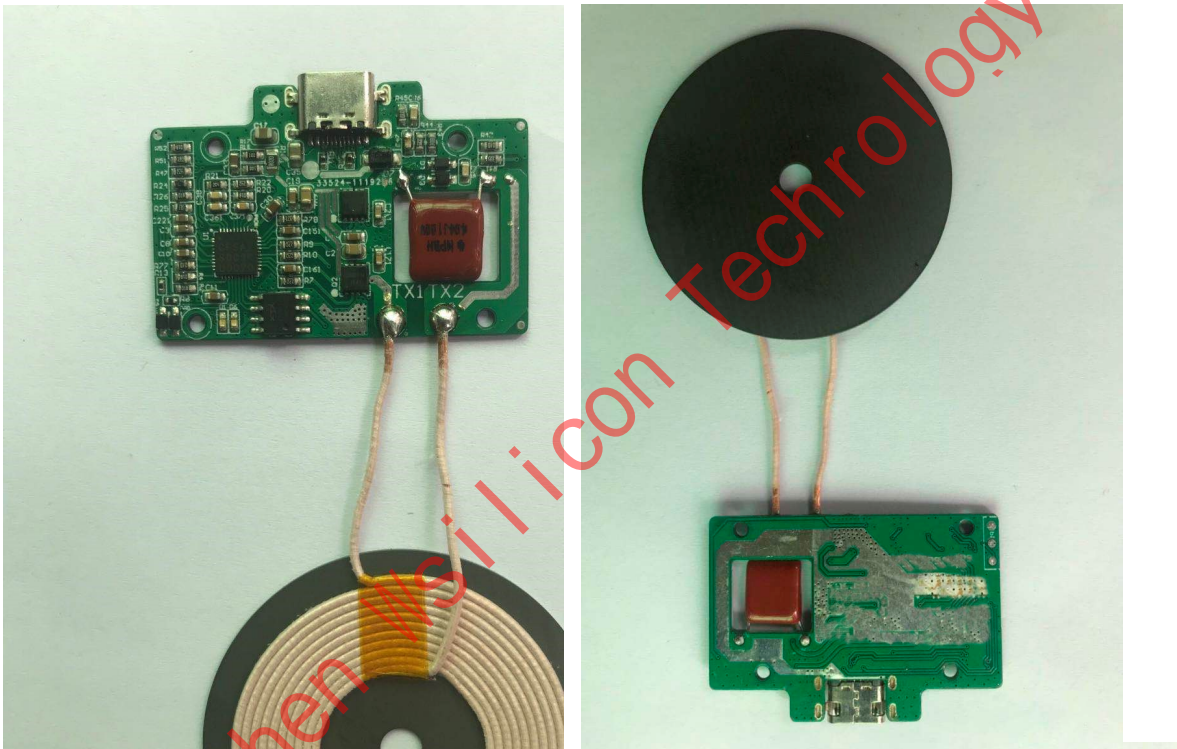


一、Product description

10W wireless charger bade wireless charging transmitting module, It is a transmitter specially designed to meet the wireless receiving requirements of Qi standard; Module complies with WPC1.1 。 Using chip CWT-1000 of Jiangxi Lianzhi integrated circuit Co., Ltd , Stable performance, Low standby power consumption; Adopt unique PWM modulation mode, Greatly improve conversion efficiency , Easily realize the convenience brought by wireless ; High module output efficiency, The comparison between the built-in transmission power and the wireless reception power, More accurate control of the loss of emission energy 。 The number of module components is small, and the cost performance is high. No debugging is needed, just install and use. It can easily meet the requirements of certification and is very suitable for all kinds of wireless charging equipment complying with Qi standard 。 For example: for mobile devices with wireless charging function。

二、Product view



三、Product characteristics

- 1、 It is designed in strict accordance with Qi standard and is compatible with all kinds of Reception conforming to Qi standard。
- 2、 Current induction;
- 3、 The module has over-current protection (OCP);
- 4、 Over current limit; Short circuit protection;
- 5、 Under voltage protection (UVP); Over voltage protection (OVP); Foreign metal detection (FOD), etc;
- 6、 Over temperature protection (OTP) ;
- 7、 The standby power consumption is less than 0.09w, the efficiency is about 76%, and the

四、Product size

PCBA module size	long: 44mm wide: 30mm thick:3.5mm
Size of magnetic disc plus coil	Diameter: 50mm* thick: 2.0mm

五、Electrical characteristics of the product

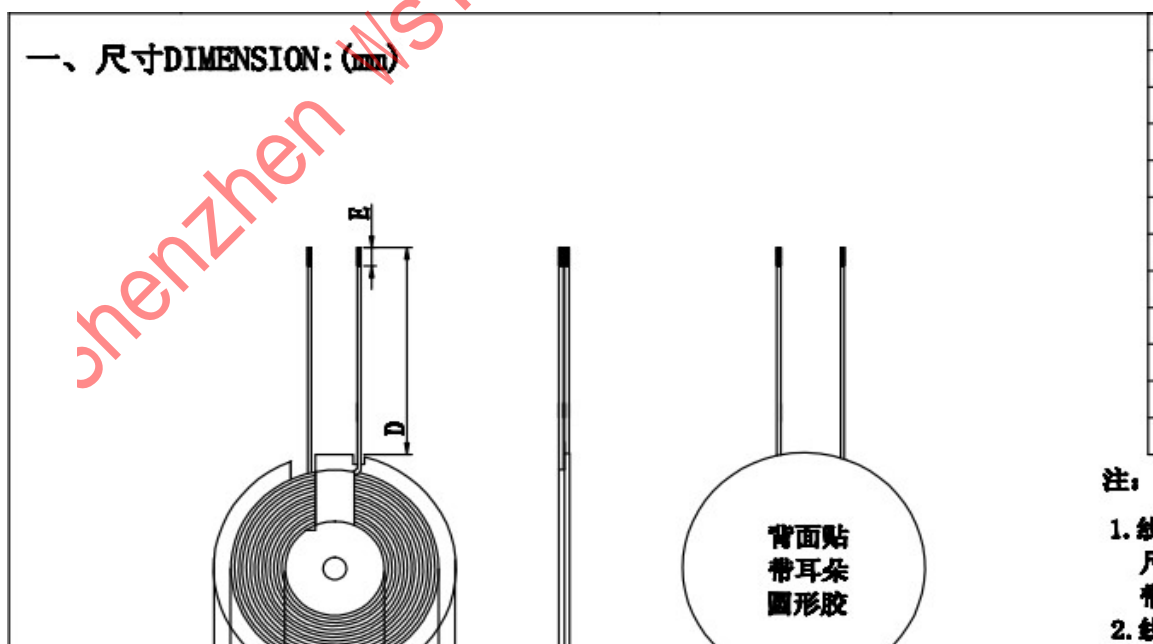
Input voltage	9V
Output voltage and current	9V/1.1A
Transmitting frequency	110KHZ-205KHZ
Standby power consumption current	0.02W 、 0.002A
Charging distance	2mm-8mm
Coil type	Model: A11, Inductance value: 6.3uH
conversion efficiency	75%
Ripple voltage	<120mV
Temperature protection	Set value: Over temperature 70°C ± 5°C, recovery 35°C ± 5°C
Overvoltage protection	11.4V
Undervoltage protection	8.2V
Lighting mode	The charging indicator flashes red and blue alternately for 3 times before going out. Working status: blue light breathing, FOD status: red light flashing, full light not on
Compatibility	Compatible with Qi receiving products on the market, Samsung mobile / Apple Mobile / Huawei mobile;
Operating temperature and humidity	Temperature: 0°C-60°C, relative humidity: 10%-85%
Storage temperature and humidity	Temperature: -20°C-80°C, relative humidity: 10%-95%

六、Product electrical test results

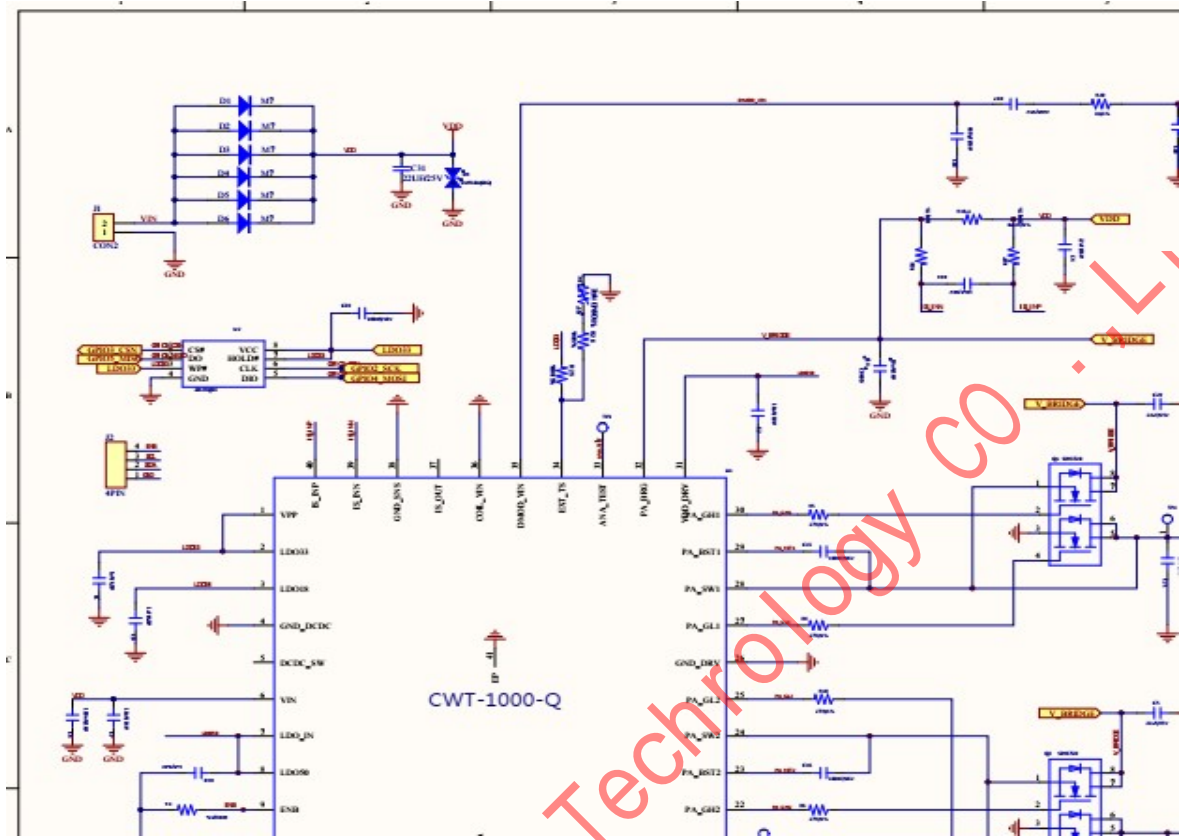
Serial number	Test items	Test value or result	determine	Remark
1	No load output test	9.1V	PASS	
2	Full load output test	Aging for 30 minutes	PASS	
3	Efficiency test	75%	PASS	
4	Ripple test	110mV	PASS	
5	Overvoltage protection	11.4V	PASS	
6	Undervoltage protection	8.2V	PASS	

7	Metal foreign matter test	The metal foreign matters enter the coil center, and the module is protected	PASS	
8	NTC protection test	Yes	PASS	
9	State of charge test	blue breathing	PASS	
10	Full state test	No lights	PASS	
11	Abnormal state test	Red lights flash	PASS	
12	Standby state test	The red light and blue light blinked three times and went out	PASS	
13	Cell phone signal interference test	No interference	PASS	
14	Transmitting and receiving distance	1mm-8mm	PASS	
15	No abnormal sound on no load belt	No abnormalities	PASS	
16	Full launch	Normal 0.8A	PASS	
17	Standby consumes power	12mA-35mA	PASS	
18	Mobile phone measurement	Using the samsung S8 + test, working time: 2 hours, 54 minutes	PASS	
19	Mobile phone measurement	Tested with apple 8, No interruption; Full time: 3 hours and 15 minutes	PASS	

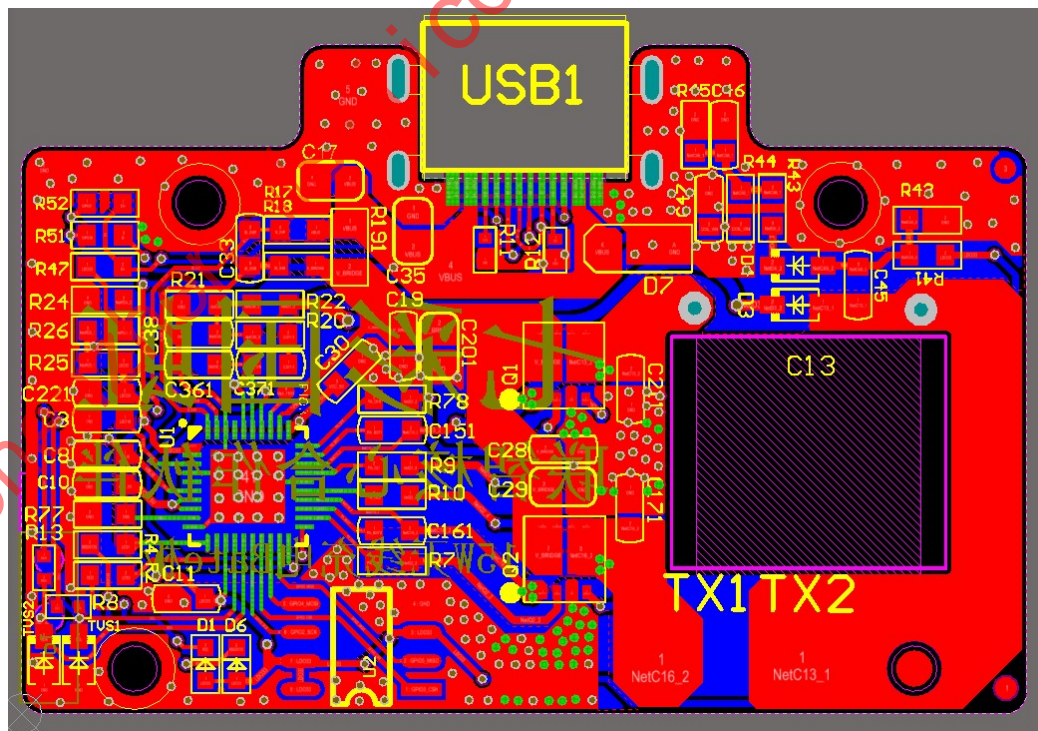
七、Dimension drawing of transmitting coil



八、Module circuit diagram



九、PCB dimension drawing



十、Product job description

矽致科技

- 1、Place Qi wireless receiving product above the center of coil of this product (transmitting Module). At this time, Qi wireless receiving product shall output voltage and current, and the Red and blue lights shall be on for 3 seconds at the same time and then go out.
- 2、If the Qi wireless receiving equipment is far away from the coil center of the transmitting module, it cannot enter the charging state. At this time, the Qi wireless receiving device needs to be moved back to the central position of the coil of the transmitting module, so that it can automatically enter the charging state. Red and blue lights always on at the same time.
- 3、If the transmitting module detects that the Qi wireless receiver is abnormal, the red and blue lights flash twice, and the transmitting module does not work. At this time, it is necessary to remove the receiving device from the transmitting module, and put the receiving device on the transmitting module again to enter the charging state.

十一、Ordering Information

NO	Items	Ordering Code (Class 2)	Description
1	5W 10W wireless charging module	Bate	Wireless charging module

十二、Document History

Revision	Date	History
Official V1.0	2020-03-06	Official version