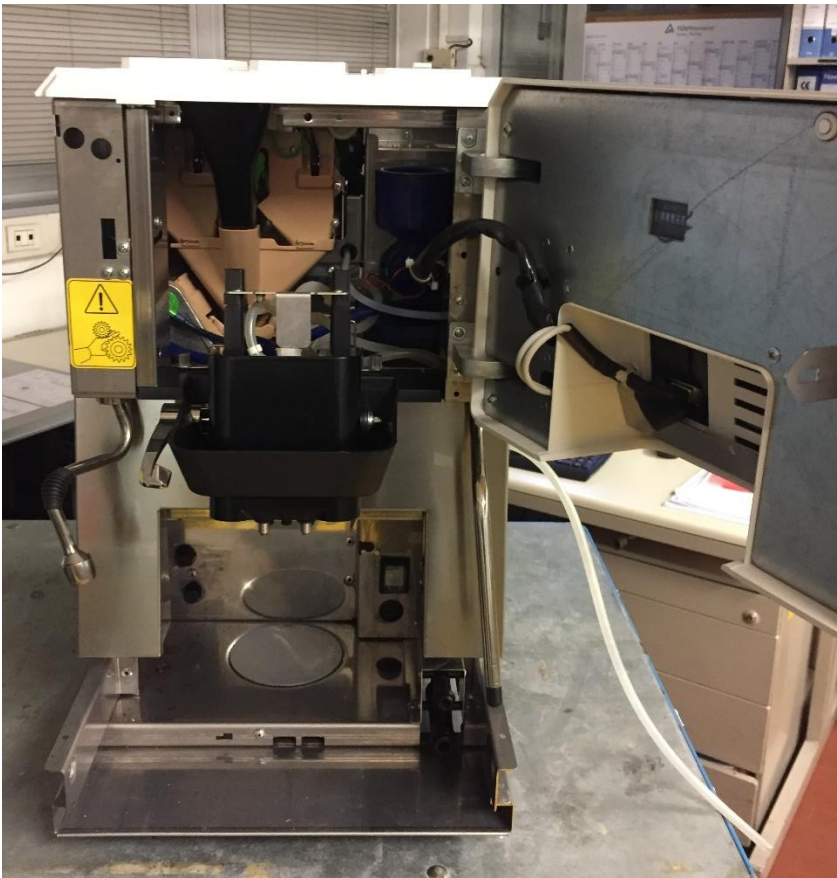


INTERNAL PHOTO

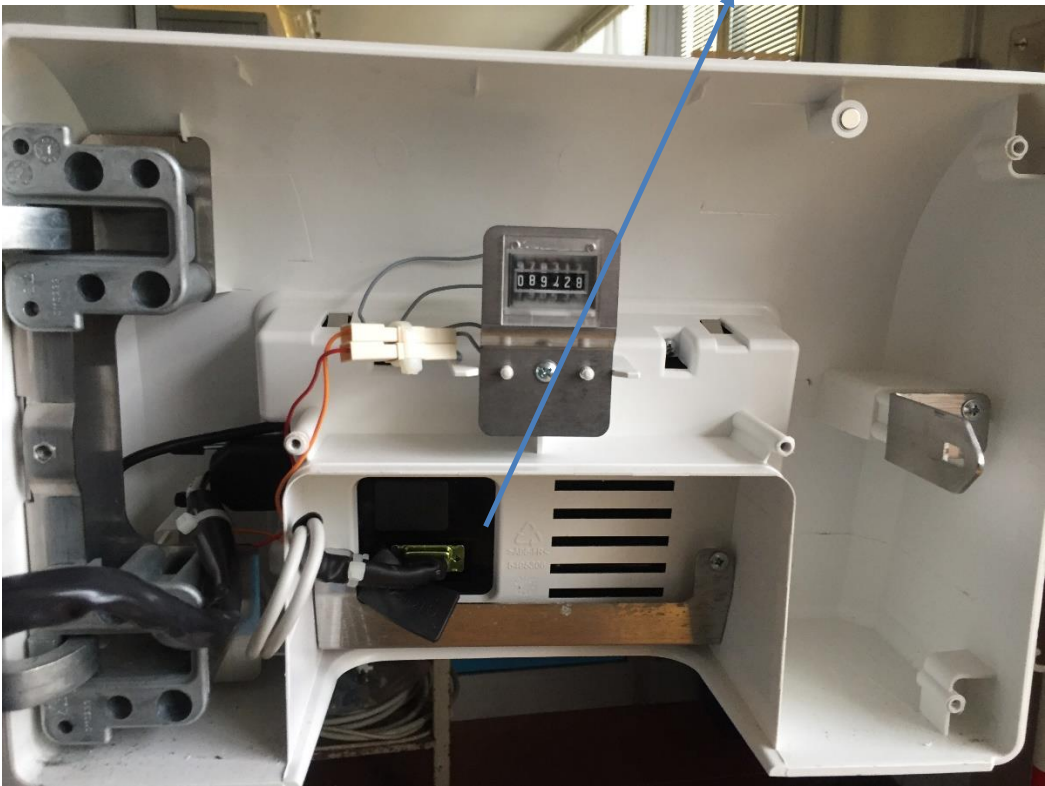
PHOTO OF INTERNAL COFFEE MACHINE

FRONT VIEW – DOOR OPEN WITHOUT REMOVABLE PARTS



INTERNAL DOOR WITHOUT METALLIC COVER

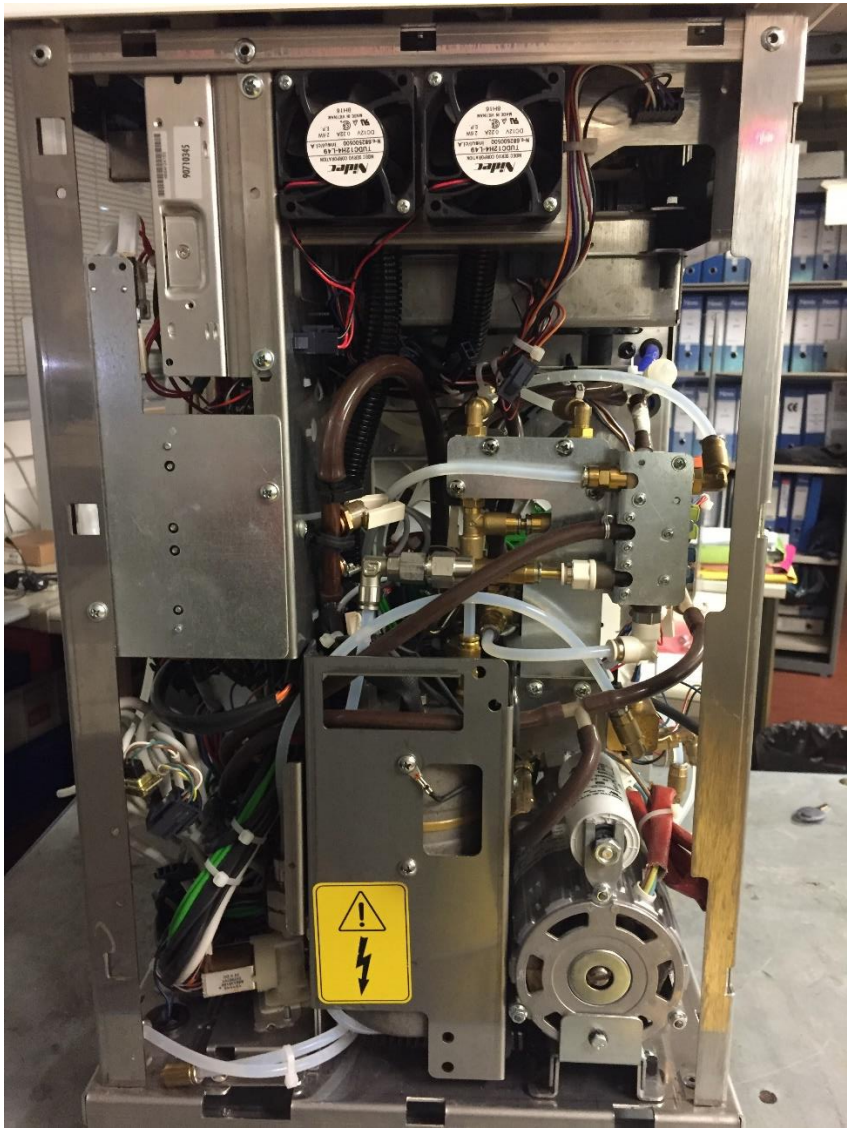
TOUCH SCREEN and its PCB BOARD– SEE EXPLODED VIEW AT FOLLOW



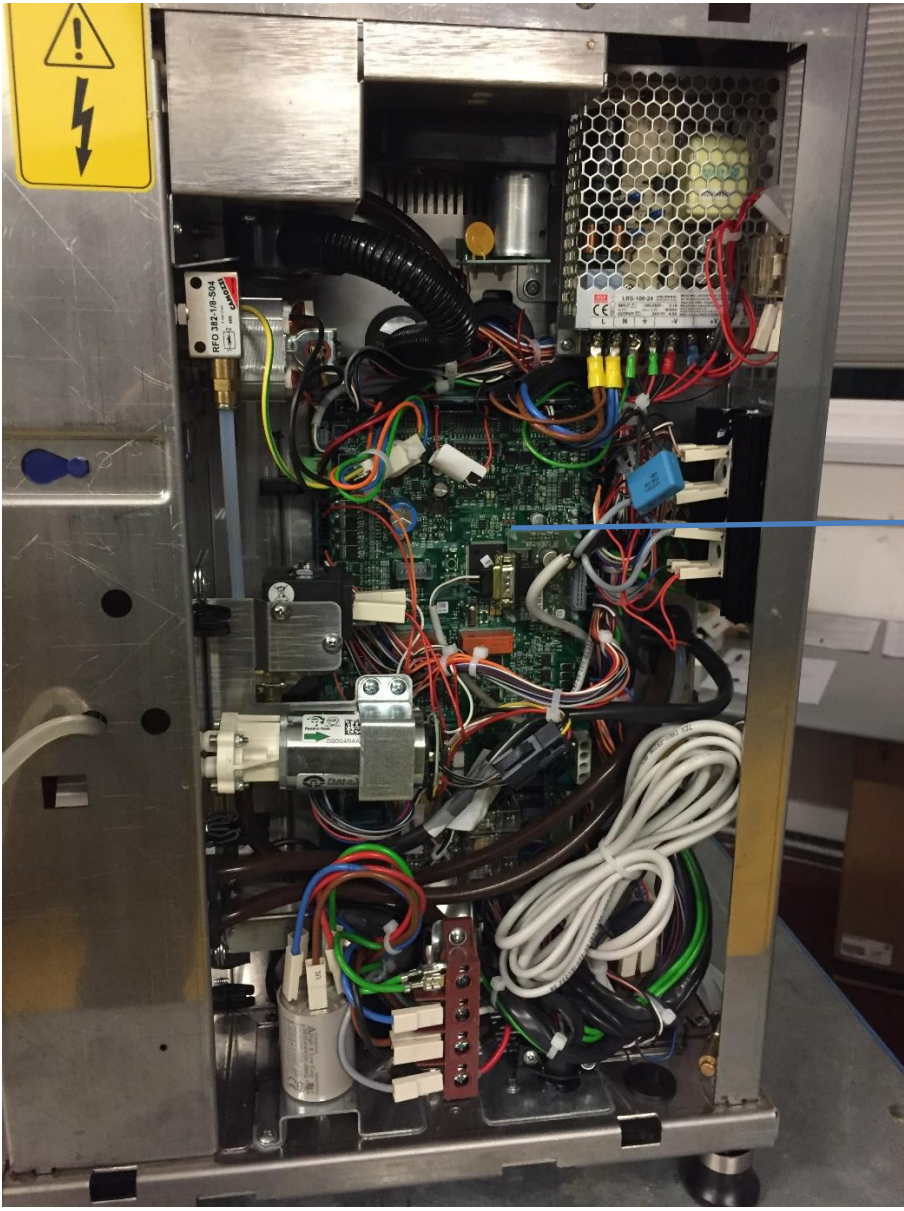
LEFT SIDE VIEW WITHOUT POLIMERIC ENCLOSURE



REAR VIEW WITHOUT POLIMERIC ENCLOSURE

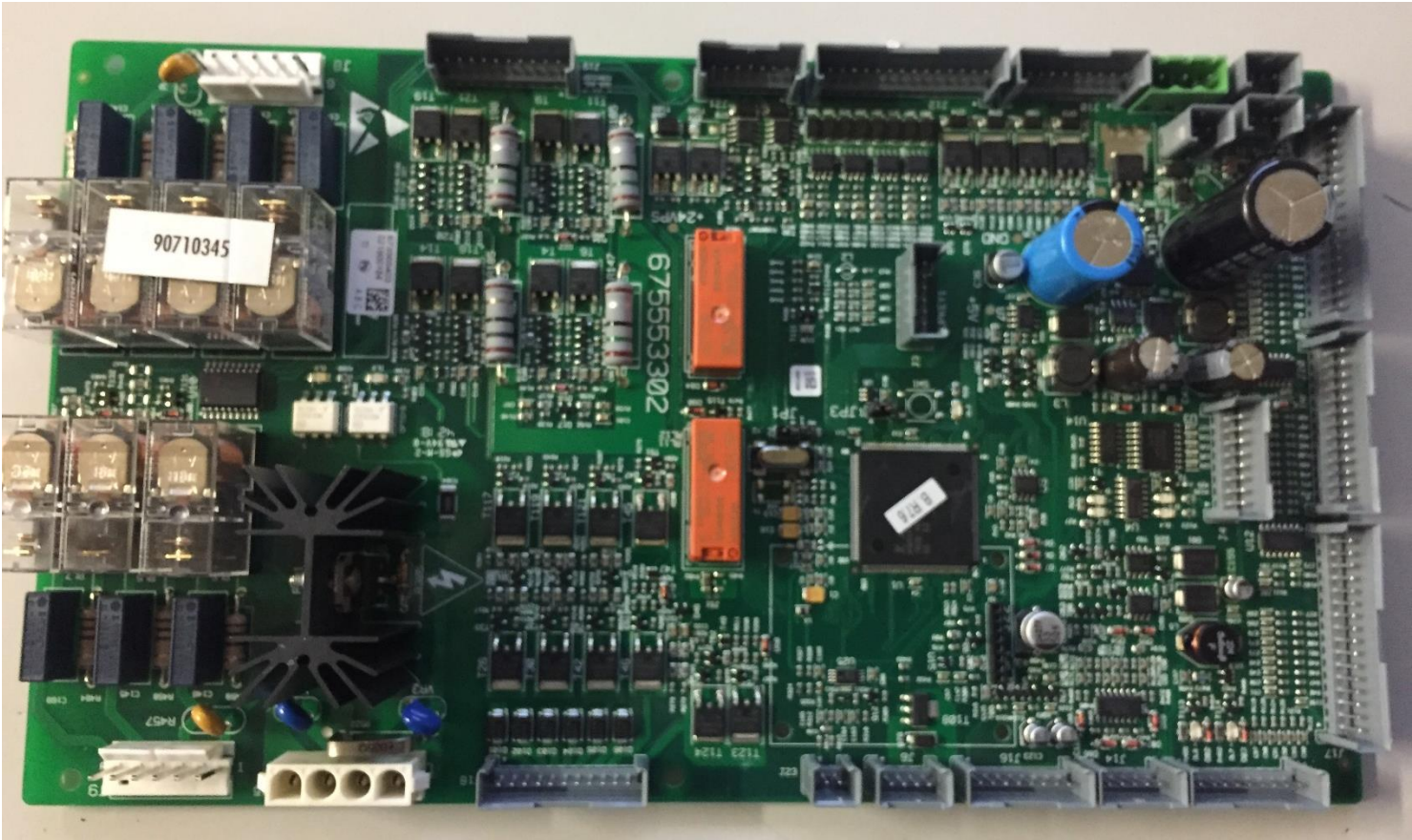


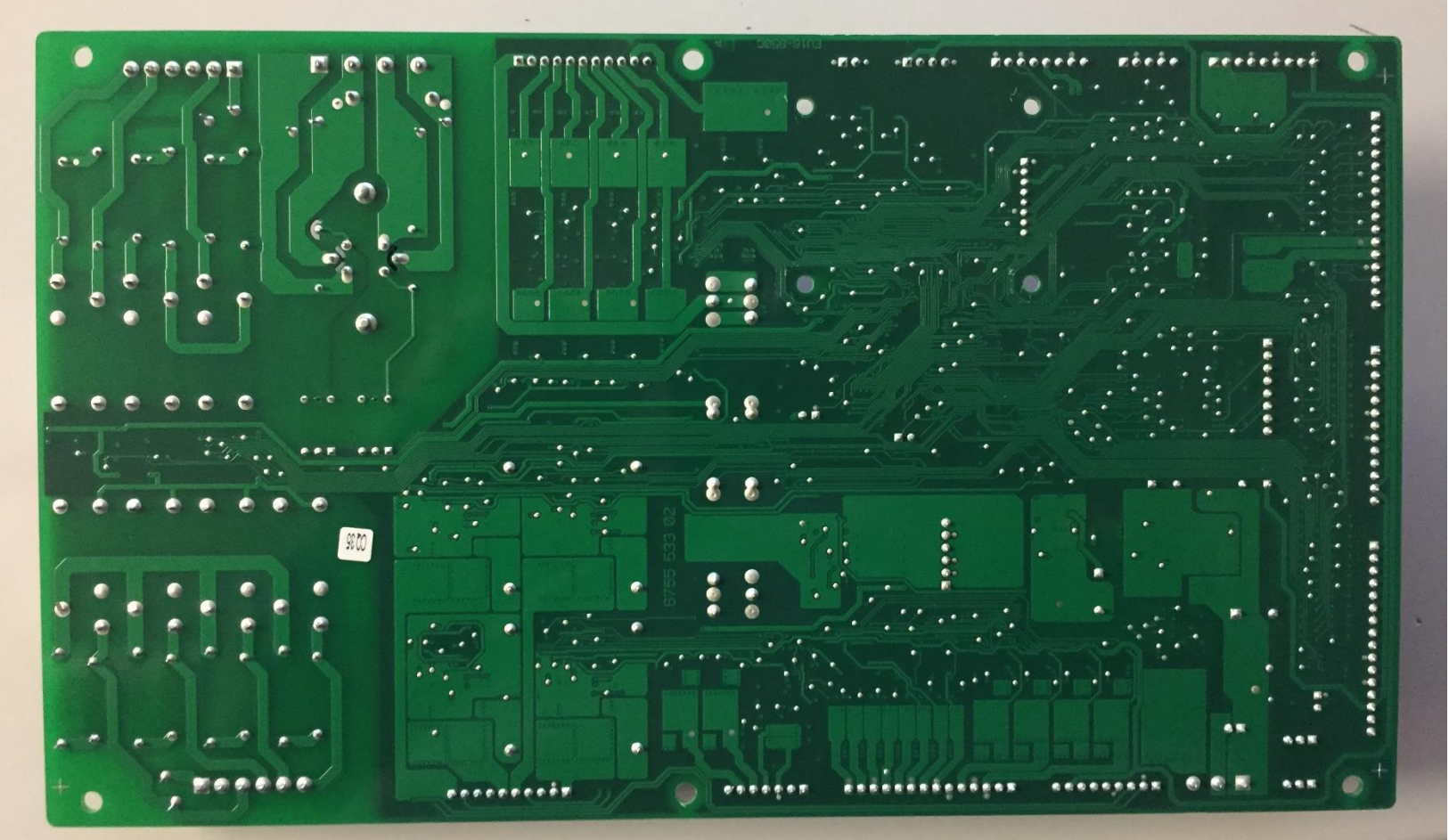
RIGHT VIEW WITHOUT POLIMERIC ENCLOSURE



COFFEE MACHINE'S ACTUATING PCB BOARD
POSITION. SEE AT FOLLOW EXPLODED VIEW

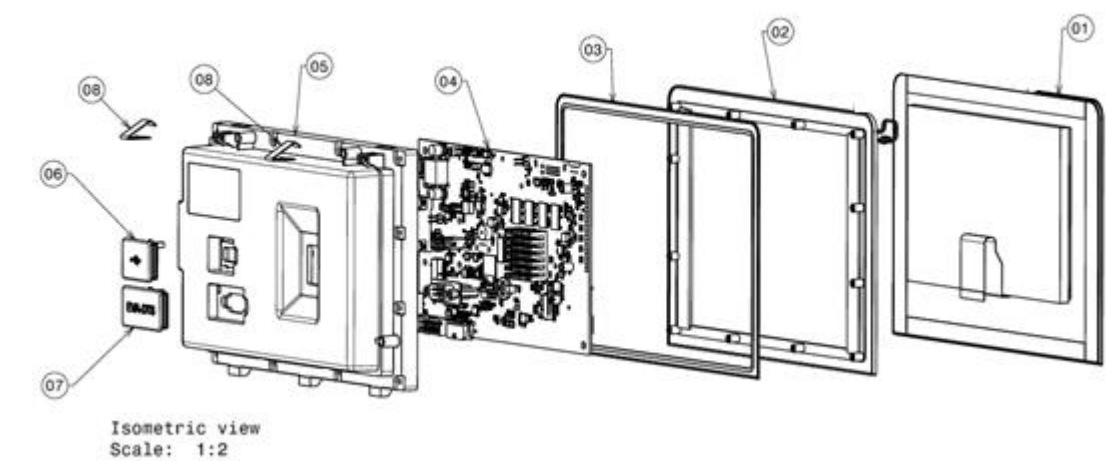
EXPLODED VIEW AND COMPONENTS OF THE ACTUATING PCB BOARD OF THE MACHINE





EXPLODED VIEW AND COMPONENTS , PHOTO OF THE TOUCH SCREEN WITH BUILT IN THE CPU BOARD AND WIFI/BT MODULE AND ANTENNA

EXPLODED DRAW



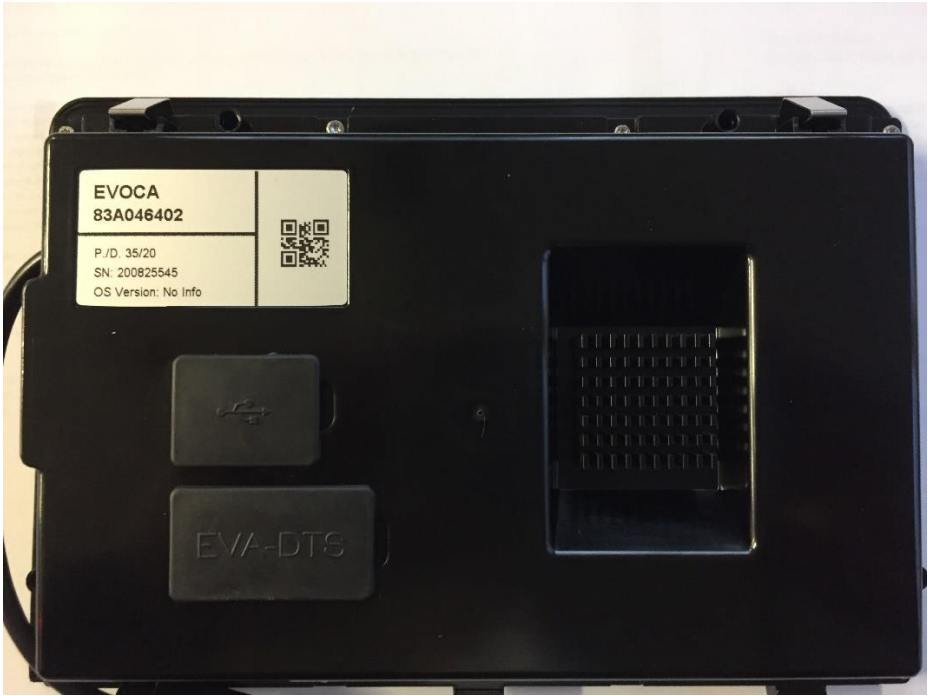
| EVOCA's internal code | | | |
|-----------------------|---------------------------------------|----------------------------|----------|
| 08 | MOLLA | COD. FORNITORE MIN1191REVA | 2 |
| 07 | TAPPO EVA-DTS | 549534601 | 1 |
| 06 | TAPPO USB | 549534501 | 1 |
| 05 | COPERTURA | 549639200 | 1 |
| 04 | SCHEDA | 67A006002 | 1 |
| 03 | GUARNIZIONE | 549534700 | 1 |
| 02 | SUPPORTO SCHEDA | 549534300 | 1 |
| 01 | ASSIEME FRONTALE (CON LCD 7" E TOUCH) | 54A070400 | 1 |
| POS. | DESCRIPTION | COMPONENT CODE | QUANTITY |

Overall view of the touch screen

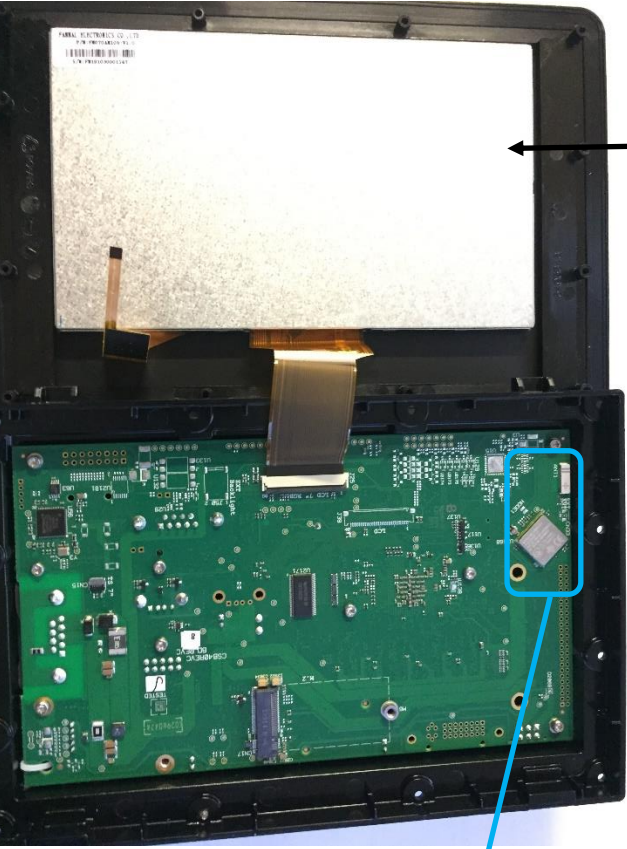
FRONT (USER INTERFACE)



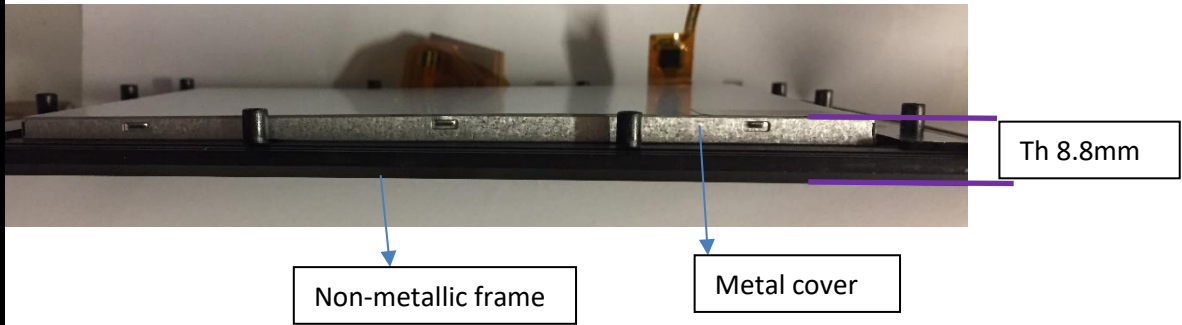
REAR (INSIDE DOOR)



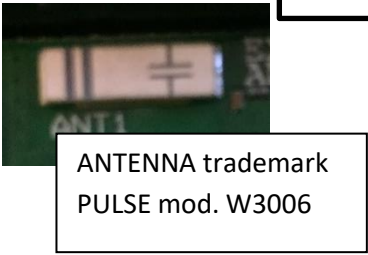
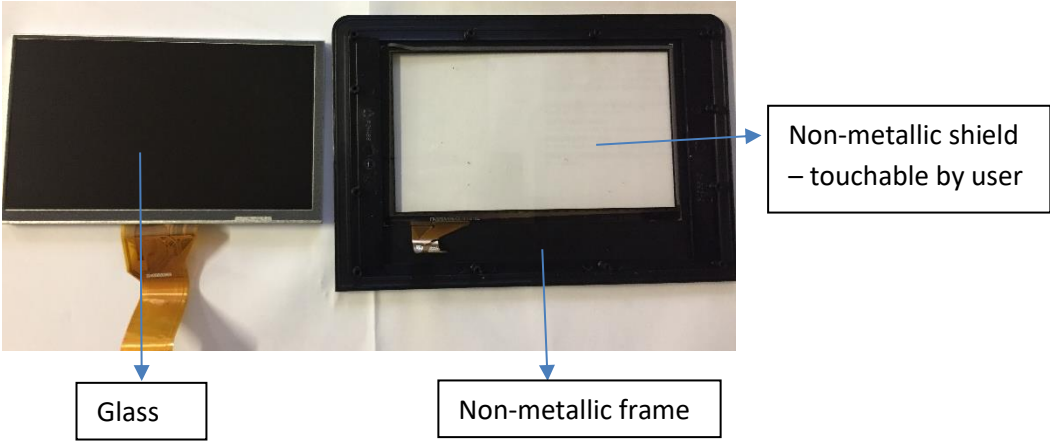
DISASSEMBLED VIEW of the TOUCH SCREEN



PARTICULAR VIEW OF THE TOUCH



Touch disassembled



TOUCH SCREEN – CPU BOARD OVERALL VIEW

