



# Canturio® - Home Base Station

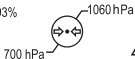
QTY 1



REF 43-5570-001-15

EDI 43557000115

SN XXYYZZZZZZ



Rx  
ONLY



IP22



FCC ID: 2AYA-J-BS1  
CONTAINS FCC ID: 2AYA-J-WF1  
CONTAINS FCC ID: R7T1201102

Use Only with Canary Medical  
Supplied Power Source

MAC: A1:B2:C3:D4:E5:F6  
Input: 5V d.c. — 0.1A Max

(01)00850015699153

(21)XXYYZZZZZZ

\*+H124435570001151B\*

\*+\$XXYYZZZZZZD24BO\*



CANARY MEDICAL

2710 Loker Ave. West, Suite 350 | Carlsbad, CA 92010 USA

www.canarymedical.com | (833) 692-2627

Distributed by:



**zimmer**

1800 W. Center Street  
Warsaw, Indiana 46580 USA

RoHS

2015/863/EU

MATERIAL & MANUFACTURING PROCESSES MUST COMPLY WITH :  
ROHS 2015/863/EU DIRECTIVE.

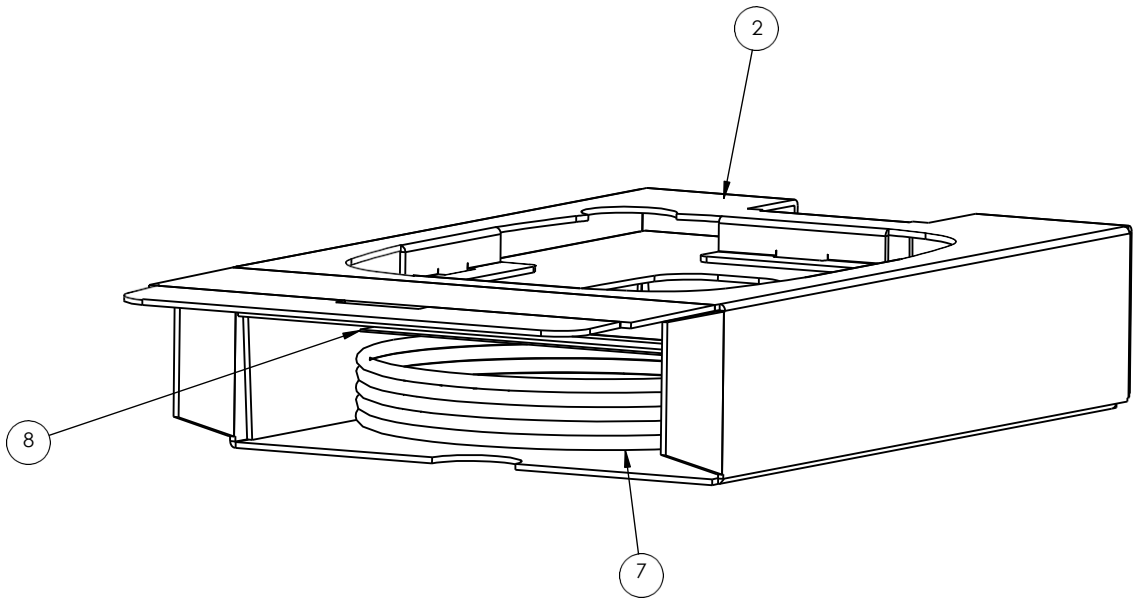
THE 1ST DELIVERY FOR EACH REVISION OF THIS PRODUCT TO CREATION TECHNOLOGIES MUST INCLUDE A DECLARATION OF CONFORMANCE TO ROHS DIRECTIVE 2015/863/EU.

REVISIONS				
ECO	REV	DESCRIPTION	AUTHOR	DATE
ECO101448	A0	Initial Release	C. Johnson	02/06/24

CONTROLLED DOCUMENT

CREATION TECHNOLOGIES

Feb 26, 2024



ITEM NO.	Default/QTY.	PART NUMBER	DESCRIPTION
1	1	19005-0233	TLA, Assy, Home Base Station, Gen 2
2	1	19005-0160	Carton, Insert, Home
3	1	19005-0210	USB Power Supply
4	1	19005-0161	Carton, Outer, Bottom, Home
5	1	19005-0139	Carton, Outer, Top Home
6	2	19005-0241	Label, Shelf Pack, Home
7	1	19005-0211	USB Cable - 2m - Black
8	1	19005-0243	Quick Start Guide, Home
9	1	19005-0159	Bag, 10" x 8", clear, polyethylene, 2 mil thick, open-top
10	AR	19005-0207	Tape, Packaging
11	1	19005-0224	Box, Overshipper, Home Base Station
12	AR	19005-0225	Box, Multi-Pack, Home Base Station

1. INSERT THE USB CABLE (ITEM 7) AND THE DOCUMENTATION (ITEMS 8) INTO THE LOWER OPENING OF THE INSERT (ITEM 2) AND FOLD TABS CLOSED.

THIRD ANGLE PROJECTION

UNITS: MILLIMETERS  
UNLESS OTHERWISE SPECIFIED  
DECIMALS .X ±0.25  
.XX ±0.13  
ANGLES ±1°  
DO NOT SCALE DRAWING  
CAD GENERATED DRAWING,  
DO NOT MANUALLY UPDATE

PROJECT 19005  
ENGINEER C. JOHNSON  
DATE 2/5/2024

Creation Technologies Design Center

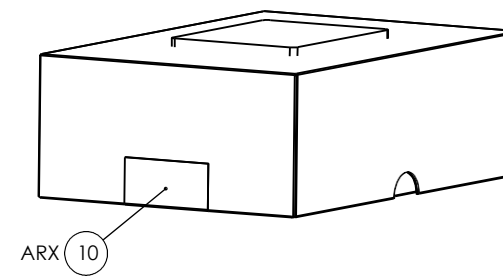
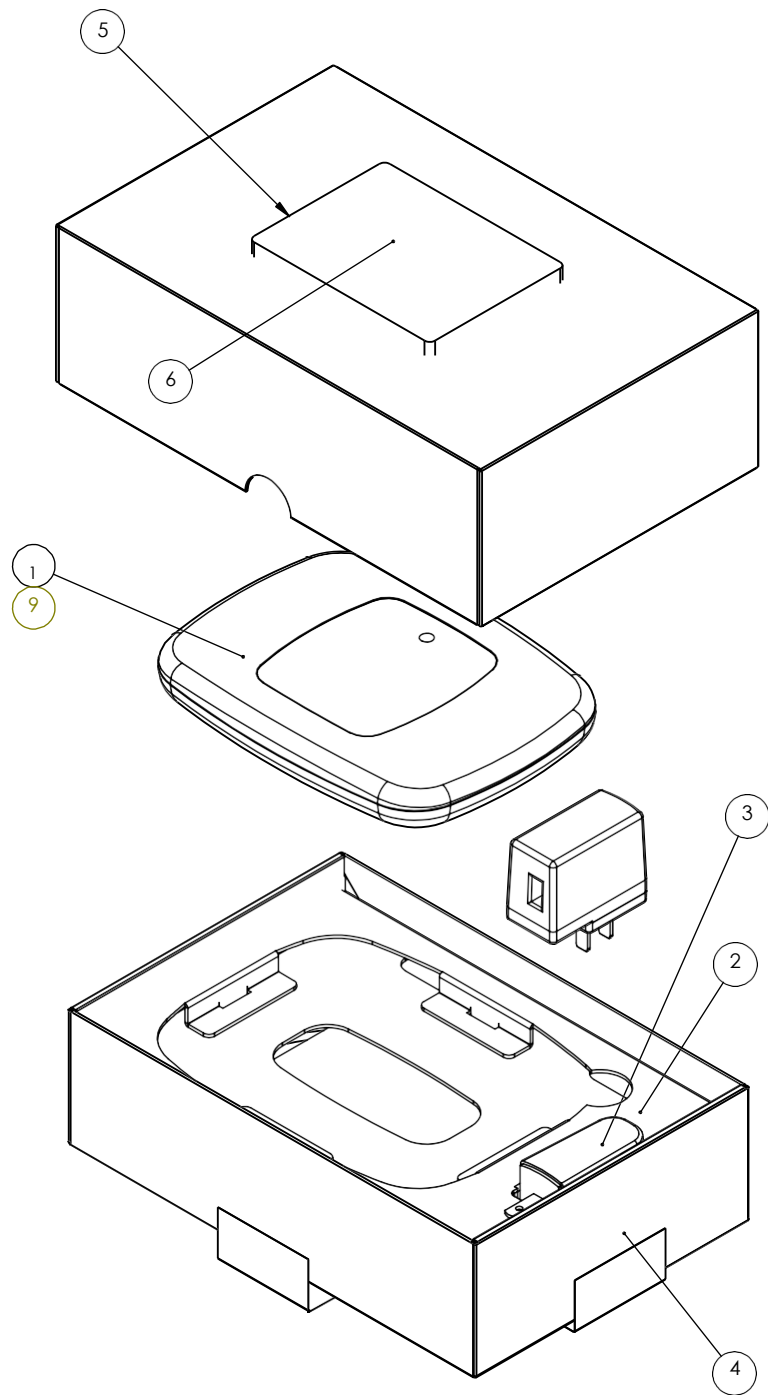
THE INFORMATION CONTAINED IN THIS DRAWING IS CONFIDENTIAL AND PROPRIETARY. ANY COPYING OR REPRODUCTION IN WHOLE OR PART WITHOUT WRITTEN CONSENT IS PROHIBITED.

DESCRIPTION  
Assy, Packaged, Home Base Station, Gen 2

DRAWING NUMBER 19005-0236  
SCALE 1:25  
REV A0  
SHEET 1 of 4

8 7 6 5 4 3 2 1


D  
C  
B  
A



D  
C  
B  
A

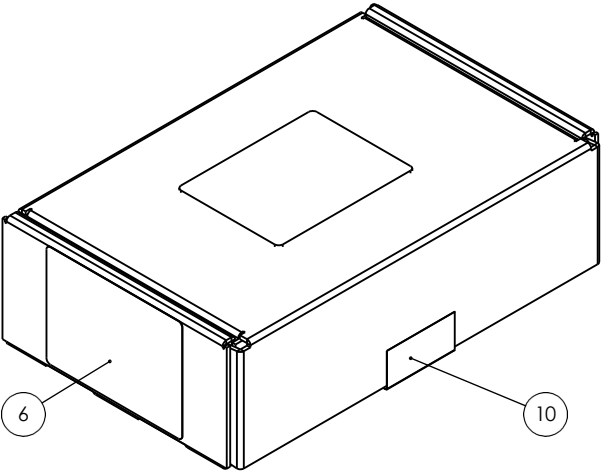
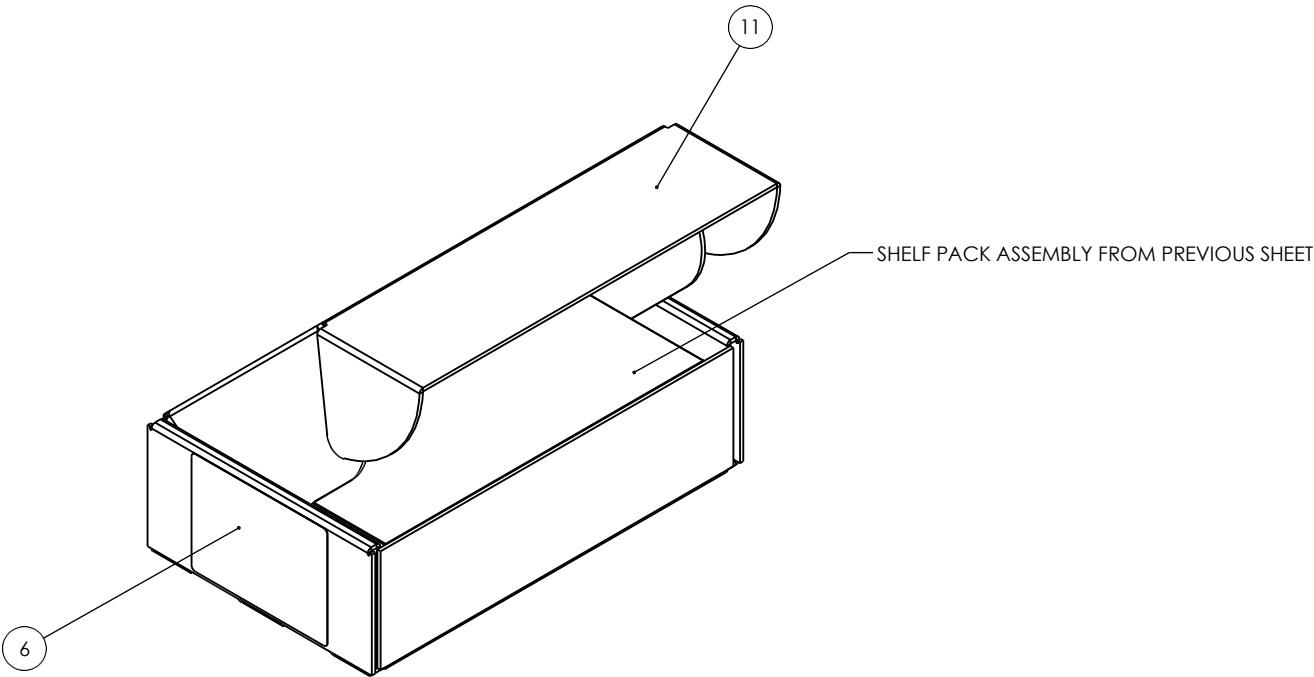
2. INSERT THE INSERT (ITEM 2) INTO THE BOTTOM OUTER CARTON (ITEM 4.)
3. PLACE THE HOME ASSEMBLY (ITEM 1) INTO THE BAG (ITEM 9) - ITEM 9 IS NOT SHOWN.
4. PLACE THE HOME ASSEMBLY (ITEM 1) AND THE BAG (ITEM 9) INTO THE INSERT (ITEM 2.) NOTE ORIENTATION.
5. PLACE THE USB POWER SUPPLY (ITEM 3) INTO THE INSERT (ITEM 2.) NOTE ORIENTATION. SLIDE THE LOWER PRONG BELOW THE INSERT TOP LAYER.
6. PLACE THE TOP OUTER CARTON (ITEM 5) ONTO THE BOTTOM OUTER CARTON (ITEM 4.)
7. PLACE THE LABEL (ITEM 6) ONTO THE ASSEMBLY. LABEL SHOULD BE CENTERED ON THE TOP FACE OF THE TOP OUTER CARTON (ITEM 5.)
8. PLACE AN APPROXIMATLEY 50 MM LENGTH OF TAPE (ITEM 10) TO SECURE THE CARTON TOP TO THE CARTON BOTTOM, ON BOTH ENDS AS SHOWN.


8 7 6 5 4 3 2 1

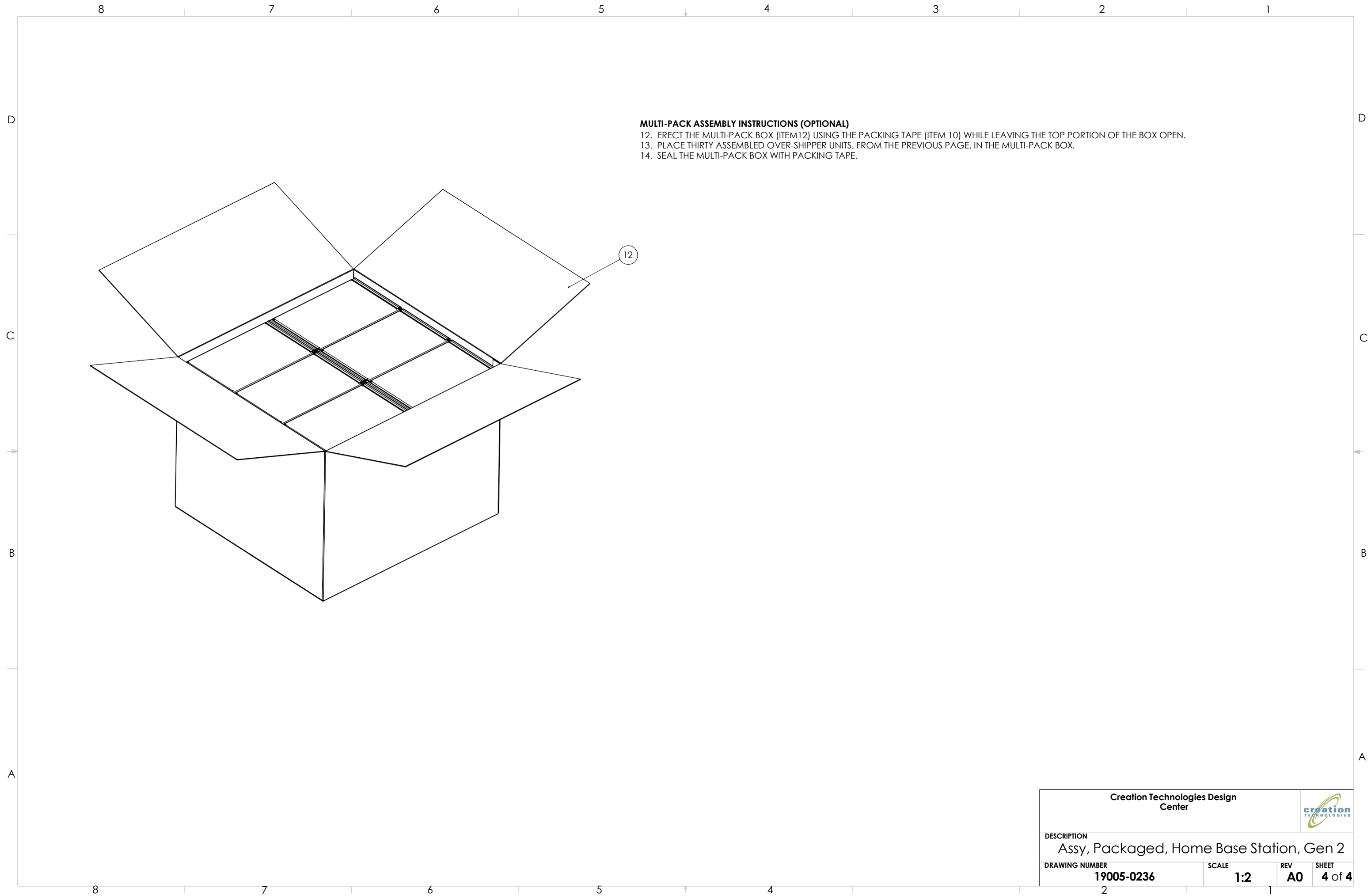
Creation Technologies Design Center			
DESCRIPTION Assy, Packaged, Home Base Station, Gen 2			
DRAWING NUMBER 19005-0236	SCALE 1:25	REV A0	SHEET 2 of 4

OVER-SHIPPER ASSEMBLY INSTRUCTIONS


9. PLACE THE SHELF PACK, FROM THE PREVIOUS SHREET, INTO THE OVER-SHIPPER (ITEM 11).  
10. TAPE THE OVER-SHIPPER BOX SHUT USING PACKAGING TAPE (ITEM 10).  
11. PLACE THE SECOND PACKAGING LABEL (ITEM 6) CENTERED ON THE SHORT SIDE OF THE OVER-SHIPPER BOX AS SHOWN.



Creation Technologies Design Center				
DESCRIPTION Assy, Packaged, Home Base Station, Gen 2				
DRAWING NUMBER 19005-0236		SCALE 1:33.3	REV A0	SHEET 3 of 4



**MULTI-PACK ASSEMBLY INSTRUCTIONS (OPTIONAL)**  
12. ERECT THE MULTI-PACK BOX (ITEM12) USING THE PACKING TAPE (ITEM 10) WHILE LEAVING THE TOP PORTION OF THE BOX OPEN.  
13. PLACE THIRTY ASSEMBLED OVER-SHIPPER UNITS, FROM THE PREVIOUS PAGE, IN THE MULTI-PACK BOX.  
14. SEAL THE MULTI-PACK BOX WITH PACKING TAPE.

Creation Technologies Design Center			
DESCRIPTION Assy, Packaged, Home Base Station, Gen 2			
DRAWING NUMBER 19005-0236	SCALE 1:2	REV A0	SHEET 4 of 4

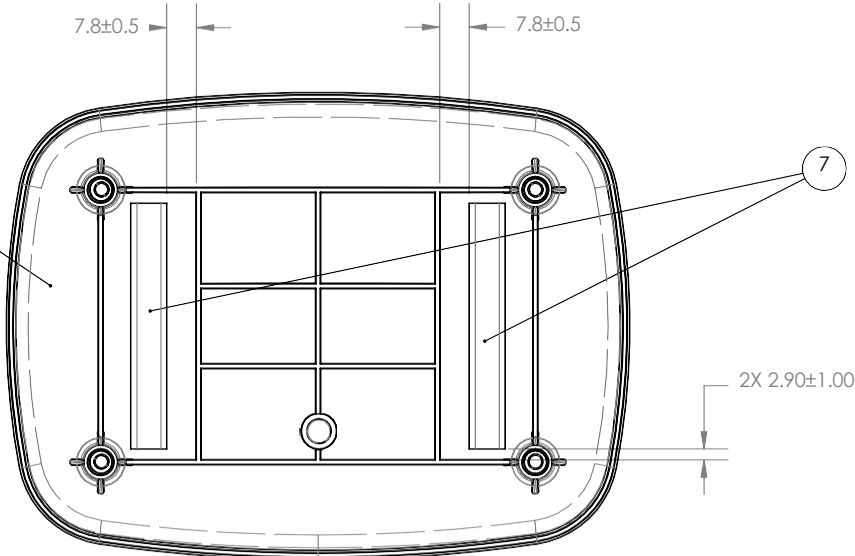
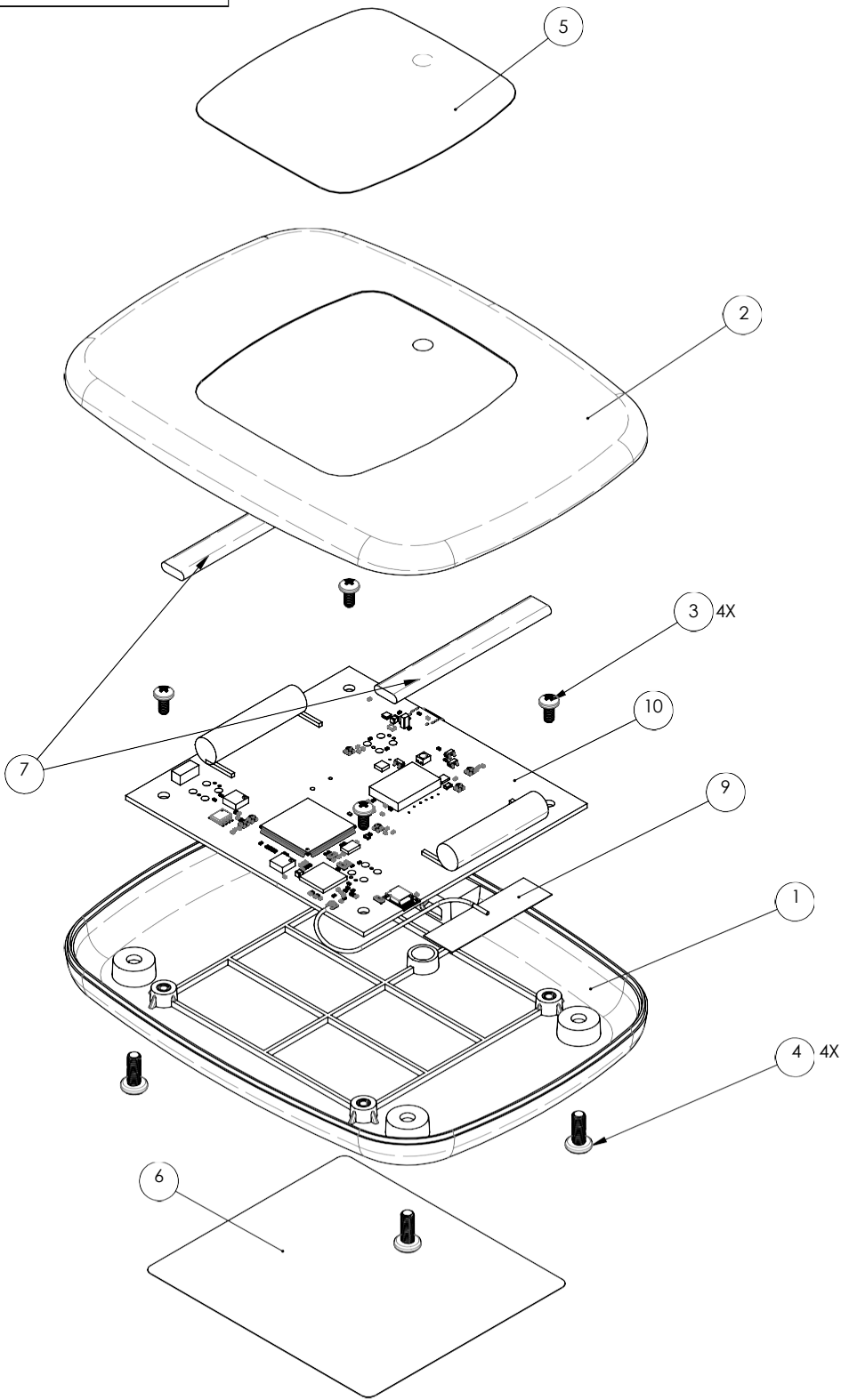
REVISIONS				
ECO	REV	DESCRIPTION	AUTHOR	DATE
ECO101444	A0	Initial Release	C. Johnson	01/17/24
ECO101448	B0	Added Notes 7 and 8. Added items 11,12, and 13 in the BOM.	C. Johnson	02/06/24

**CONTROLLED DOCUMENT**

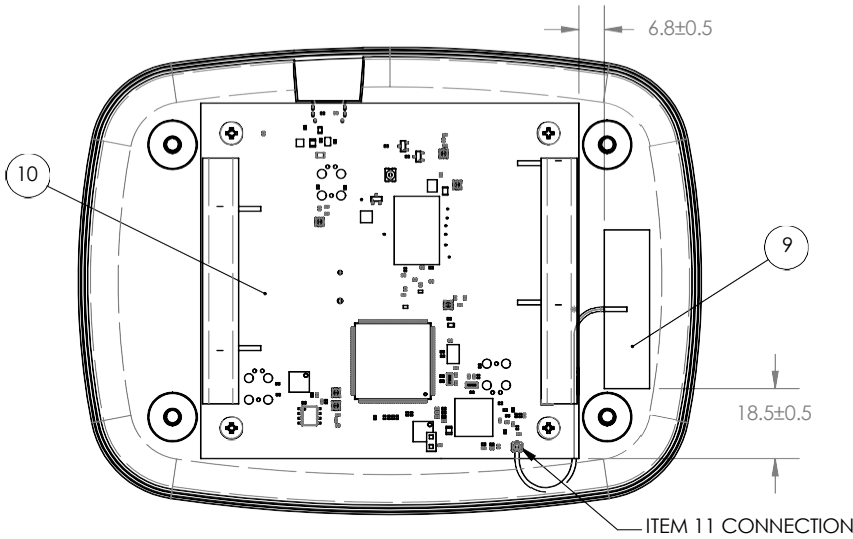
CREATION TECHNOLOGIES

Feb 26, 2024

- NOTES:
- Secure Item 10 to Item 1 with Item 3, 4 places. Torque 0.6 N-m.
  - Apply Item 9 to Item 1. Connect Item 10 to Item 9.
  - Install Item 5 on to item 2, orient window in Item 5 with opening in Item 2.
  - Install Item 7, 2 places, to Item 2.
  - Secure Item 1 to Item 2 with Item 4, 4 places. Torque 1.4 N-m.
  - Apply Item 6 to Item 1.
  - Install Firmware items 8, 11, and 13 into item 10. Reference item 12.
  - Perform functional test, per item 12.

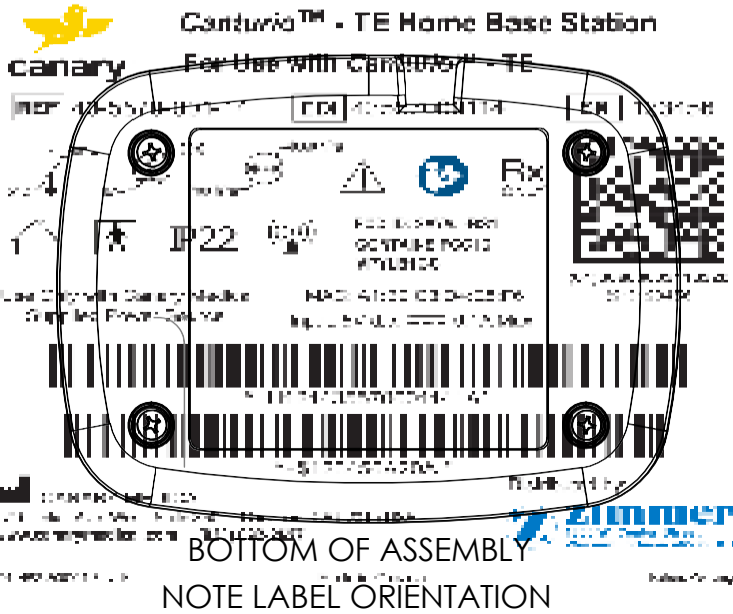


INSIDE OF TOP COVER



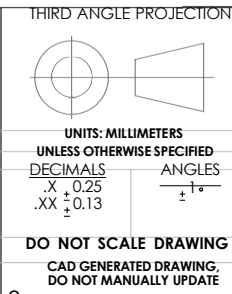
ITEM NO.	Number	Description	Qty
1	19005-0104	Case, Bottom, Home	1
2	19005-0103	Case, Top, Home	1
3	19005-0177	Screw, PPH, M3X0.5, 6mm L, 18-8 SS	4
4	19005-0178	Screw, PPH, M4x0.7, 10mm L, 18-8 SS	4
5	19005-0237	Overlay, Home Base Station	1
6	19005-0235	Label, Serial Number, Variable, Home	1
7	19005-0126	Tape, Foam	2
8	19005-0231	Firmware, Home Base Station	0
9	19005-0222	Antenna, WiFi	1
10	19005-0229	PCBA, Home, Gen 2	1
11	19005-0232	Firmware, WiFi, Home Base Station, Gen 2	0
12	19031-0001	Base Station Test Requirements	0
13	19005-0245	Home Base Station BLE FW - Gen 2	0

Home Base Station Assembly



BOTTOM OF ASSEMBLY

NOTE LABEL ORIENTATION



PROJECT	19005	Creation Technologies Design Center
ENGINEER	C. JOHNSON	500 Corporate Circle, Suite A
DATE	1/17/2024	Golden, CO 80401
THE INFORMATION CONTAINED IN THIS DRAWING IS CONFIDENTIAL AND PROPRIETARY. ANY COPYING OR REPRODUCTION IN WHOLE OR PART WITHOUT WRITTEN CONSENT IS PROHIBITED.		
DESCRIPTION		
TLA, Assy, Home Base Station, Gen 2		
DRAWING NUMBER	19005-0233	SCALE
REV	B0	SHEET
1		1 of 1