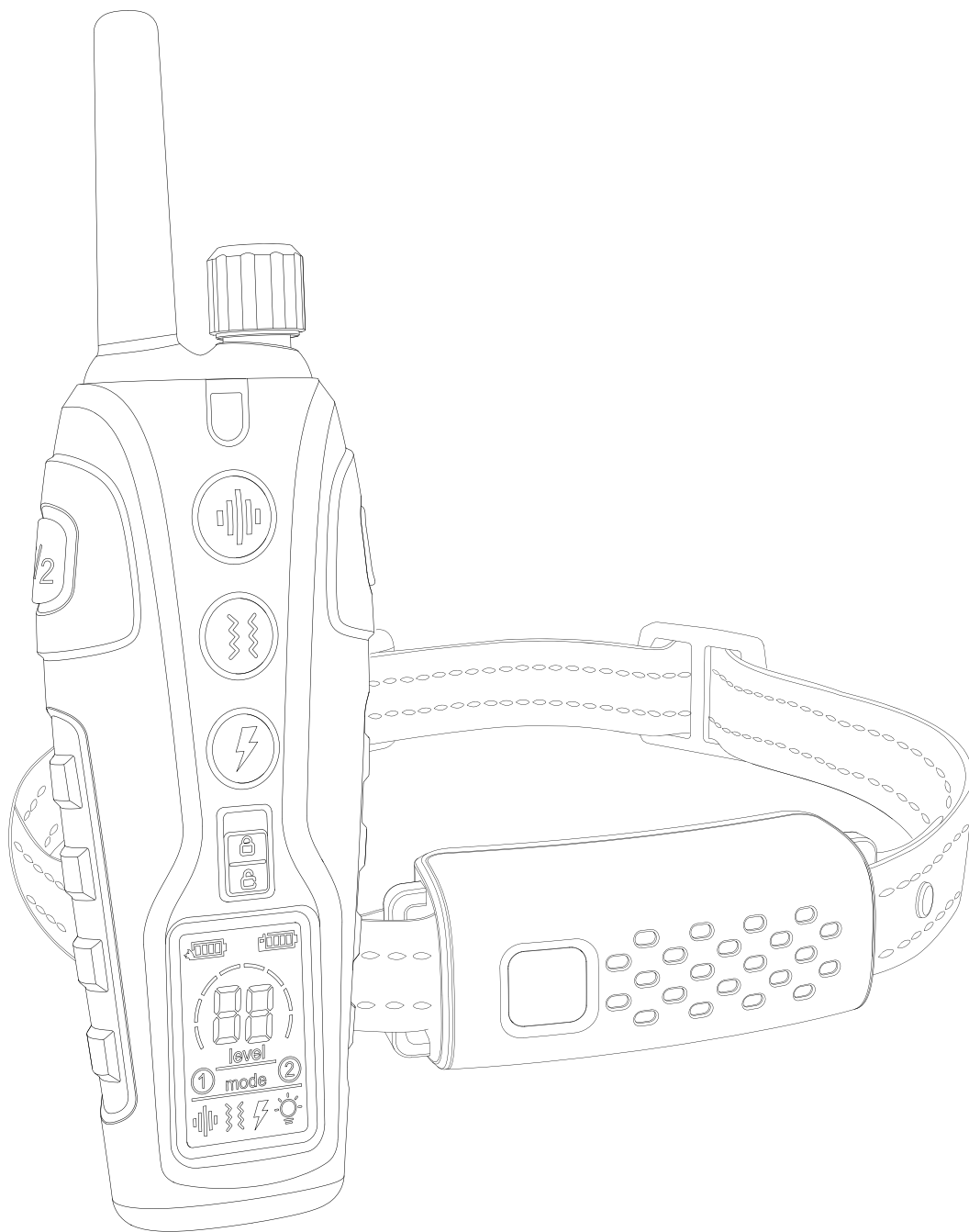


DOG TRAINING COLLAR



Model: RS3

I. Important Safety Information:

WARNING

Not for use with aggressive dogs. Do not use this product if your dog is aggressive, or if your dog is prone to aggressive behavior. Aggressive dogs can cause severe injury and even death to their owner and others.

If you are unsure whether this product is appropriate for your dog, please consult your veterinarian or a certified trainer.

- ◆ For use with dogs over 6 months of age and over 8 lbs.
- ◆ DO NOT use when the dog or the collar is wet.
- ◆ DO NOT press and hold shock or vibrate for more than 10 seconds to avoid physical or psychological damage to your dog.
- ◆ Your dog should not vocalize or panic when receiving stimulation. If this happens, the stimulation level is too high and you need to go back to the previous level and repeat the process.
- ◆ DO NOT charge the device near any flammable substances.
- ◆ For dog use only. Not for use on children.
- ◆ This is not a toy, and should only be operated by a responsible adult.

CAUTION

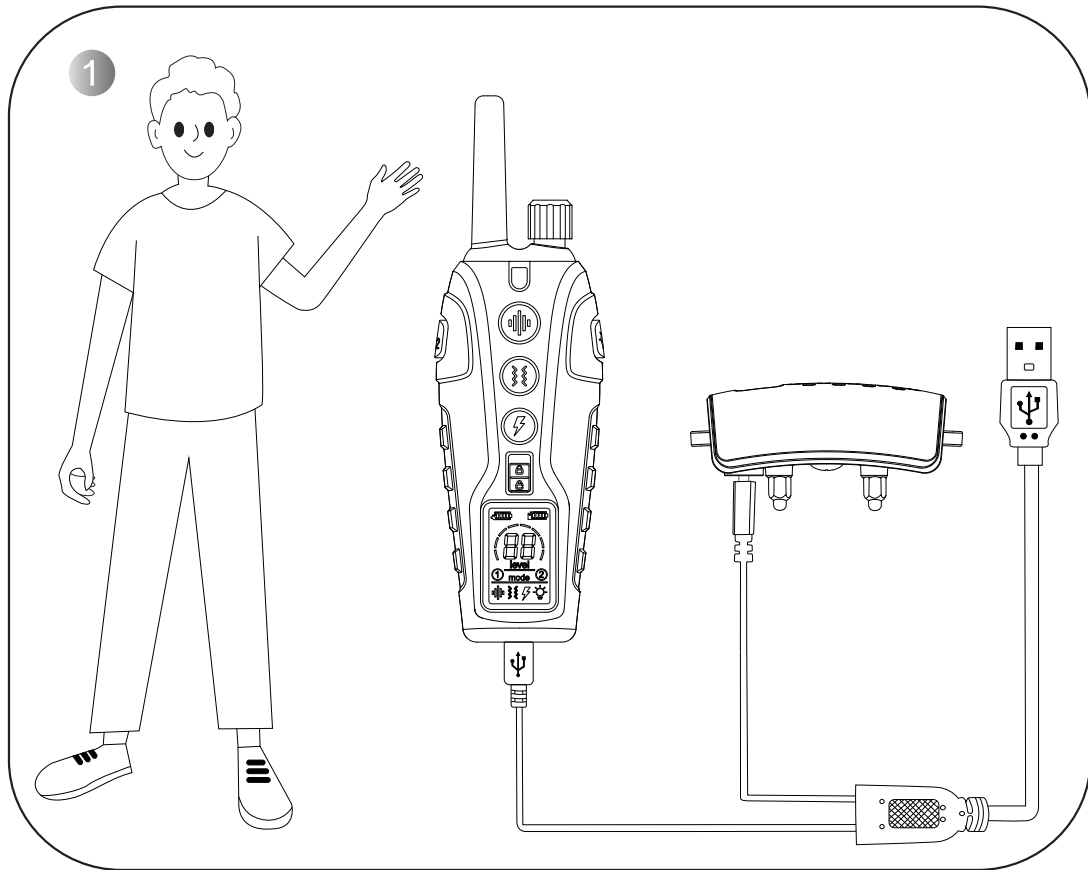
For on-leash training. Do not attach a leash to the training collar. Use a regular collar in addition to the training collar.

Risk of skin damage. Please read and follow the instructions in this manual. Proper fit of the collar is important.

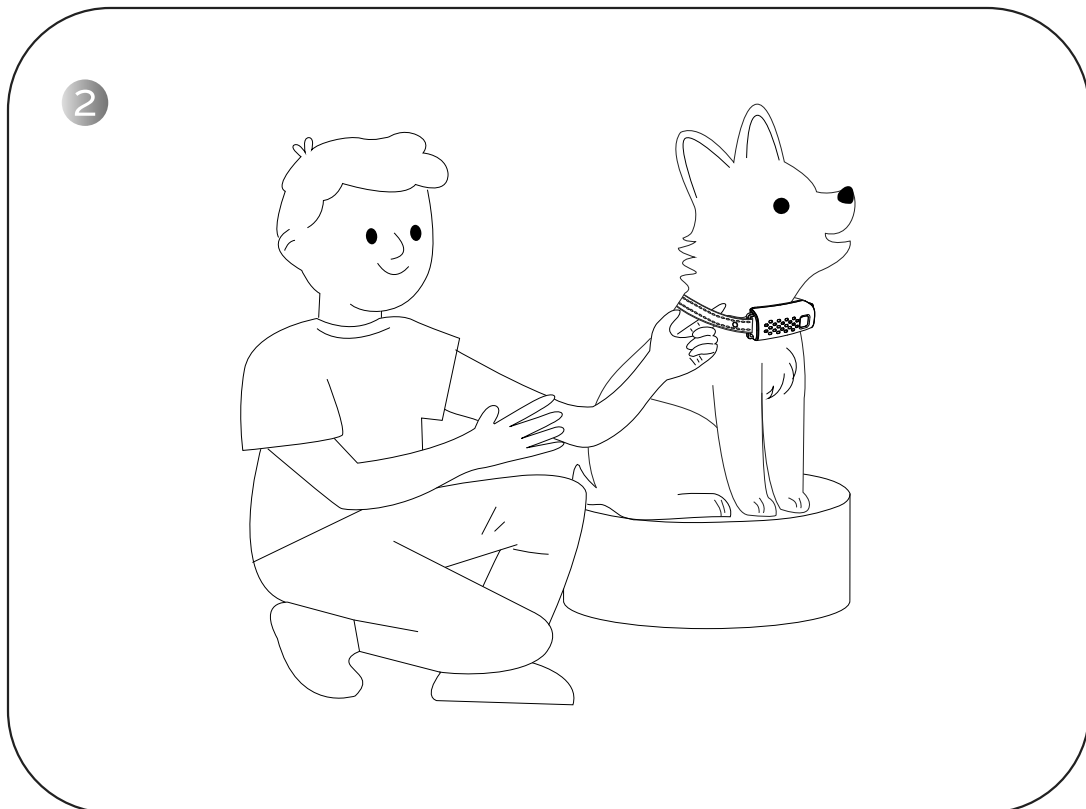
A collar worn for too long or made too tight on the dog's neck may cause skin damage. Ranging from redness to pressure ulcers; this condition is commonly known as bed sores.

- ◆ DO NOT leave the collar on the dog for more than 12 hours per day.
- ◆ When possible reposition the collar on the dog's neck every 1 to 2 hours.
- ◆ Check the fit to prevent excessive pressure; follow the instructions in this manual.
- ◆ Never connect a lead to the collar; It will cause excessive pressure on the contacts.
- ◆ Wash the dog's neck area and the contact probes of the collar weekly with a damp cloth.
- ◆ Examine the contact area daily for signs of a rash or a sore.
- ◆ If a rash or sore is found, discontinue use of the collar until the skin has healed. If the condition persists beyond 48 hours, see your veterinarian.
- ◆ The Receiver meets the IP67 waterproof rating, it can be submerged in water up to 1 meter for up to 30 minutes. If submerged and wet, please do not use it.
- ◆ This product comes with conductive silicone covers, please ensure they are worn on the contact points before putting the Receiver on your dog and check for the presence of the silicone cover every hour.

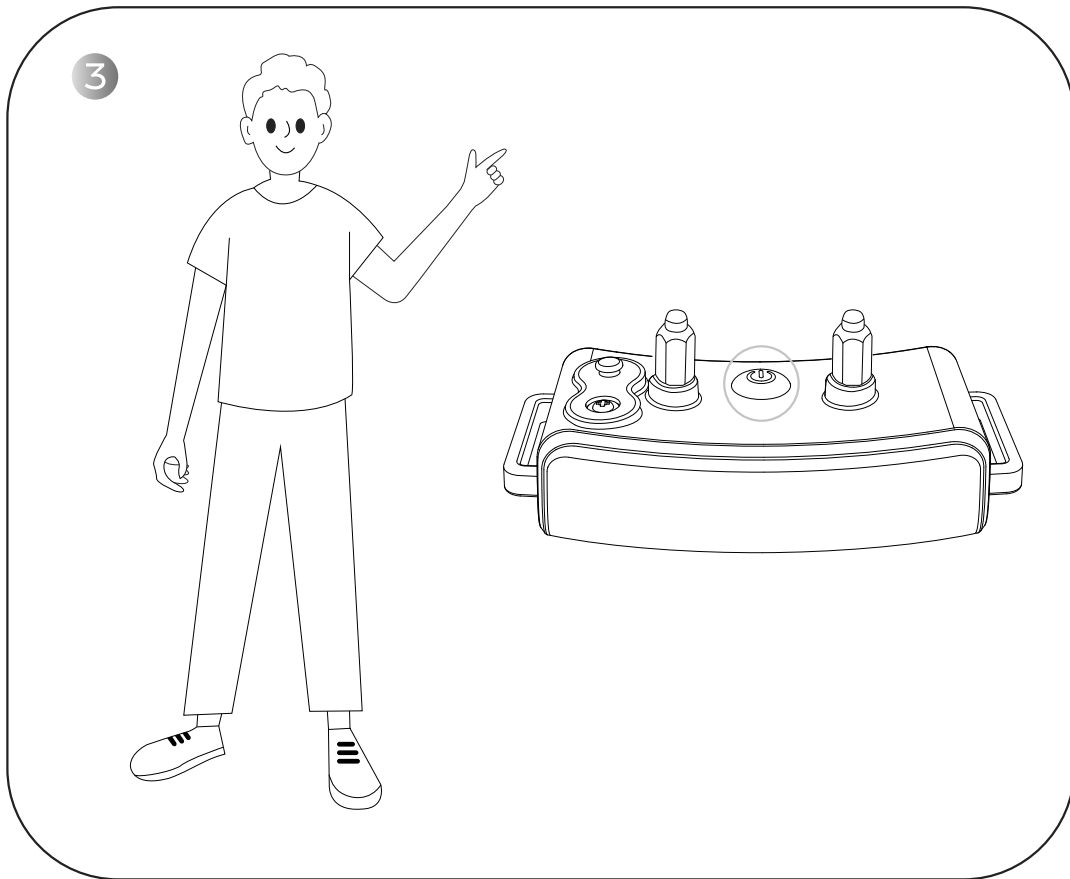
II. Quick Start Guide



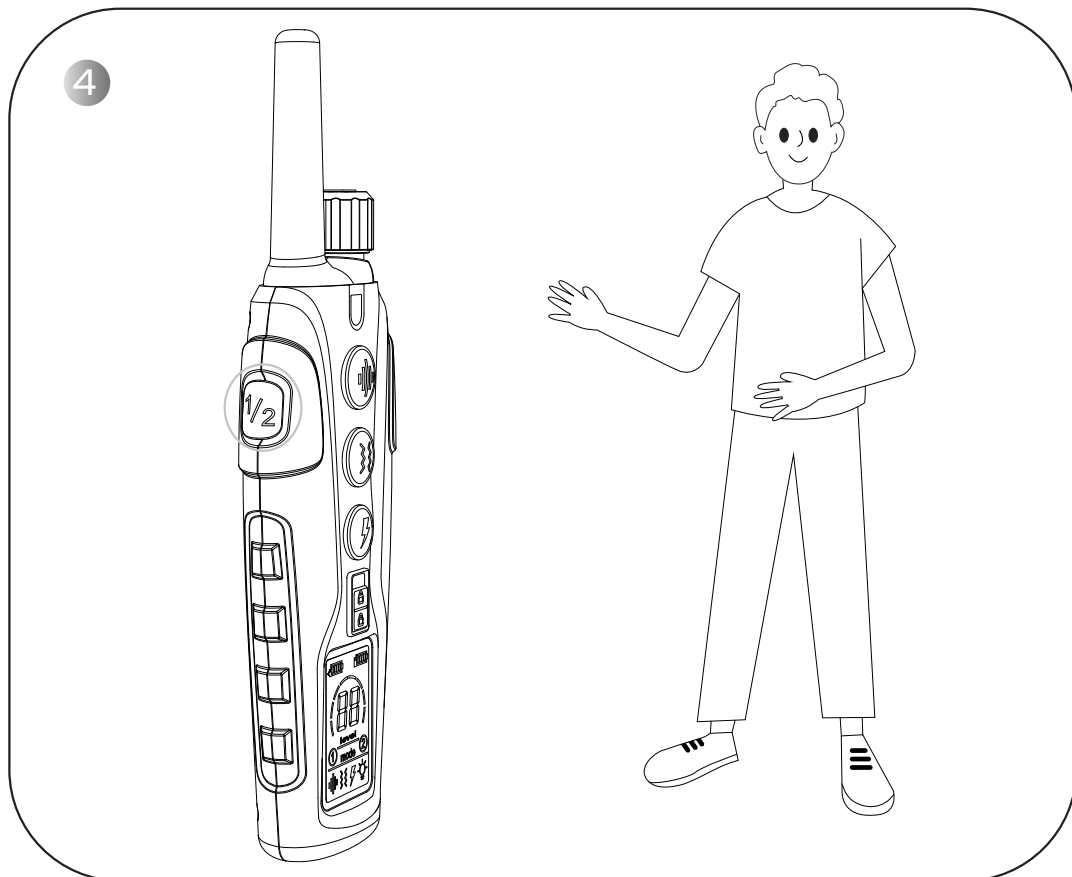
Charge the Receiver and the Remote Transmitter for 3 hours with the double-headed Micro-USB cable from the package box.



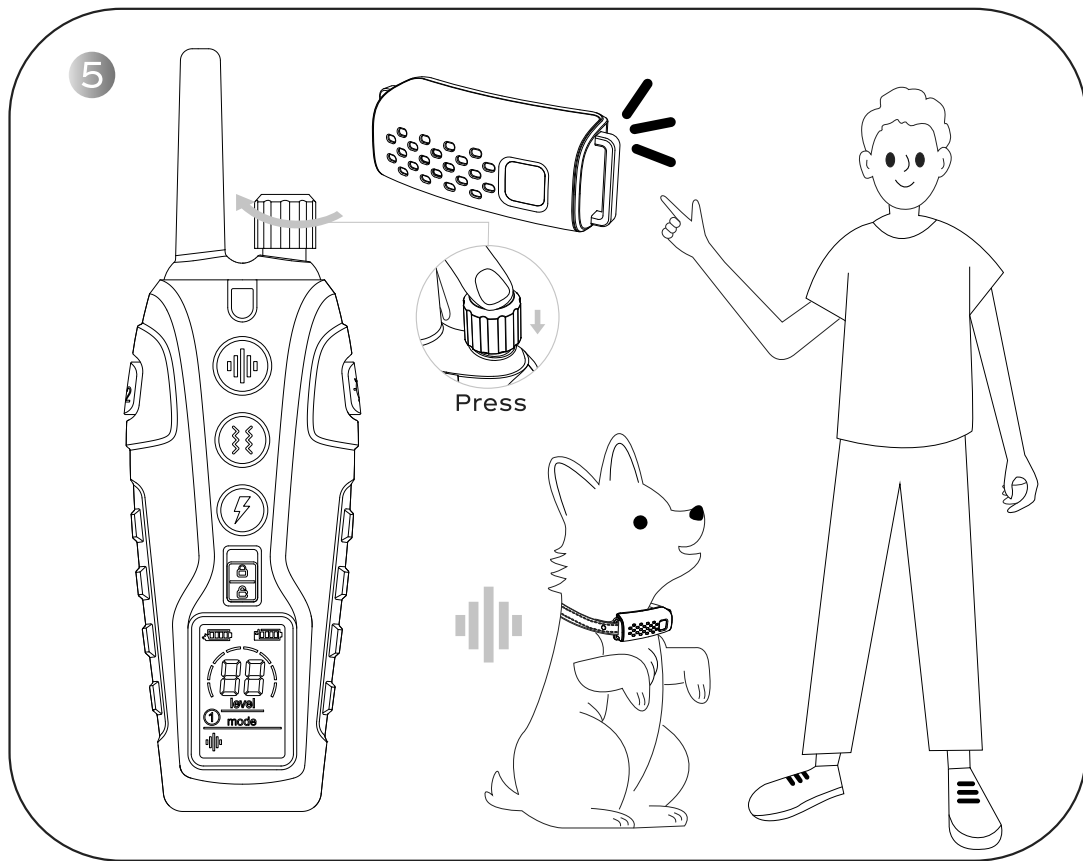
Make your dog sit down and fit the Receiver to your dog by leaving one finger space between the collar and your dog's neck. Center the contact points underneath your dog's neck, touching the skin.



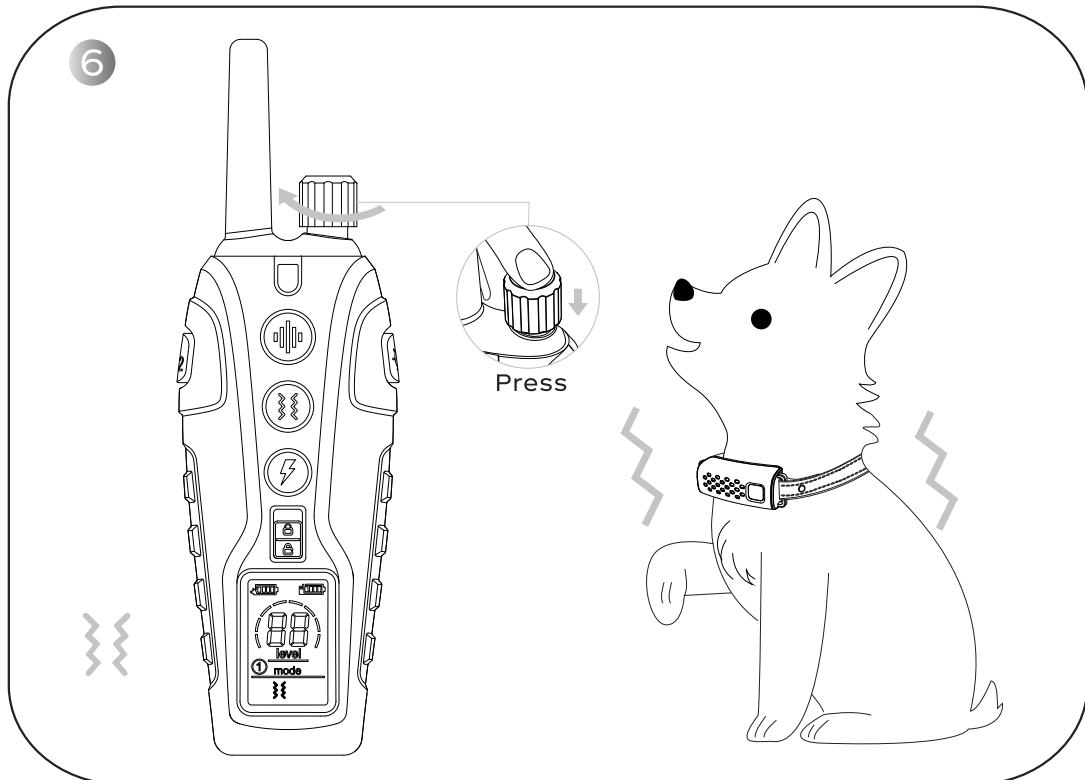
Turn on the Receiver by pressing and holding the Power Button for 2 seconds with a beeping tone and vibration to indicate that the Receiver turns on. The green LED Indicator light now continues to blink regularly.



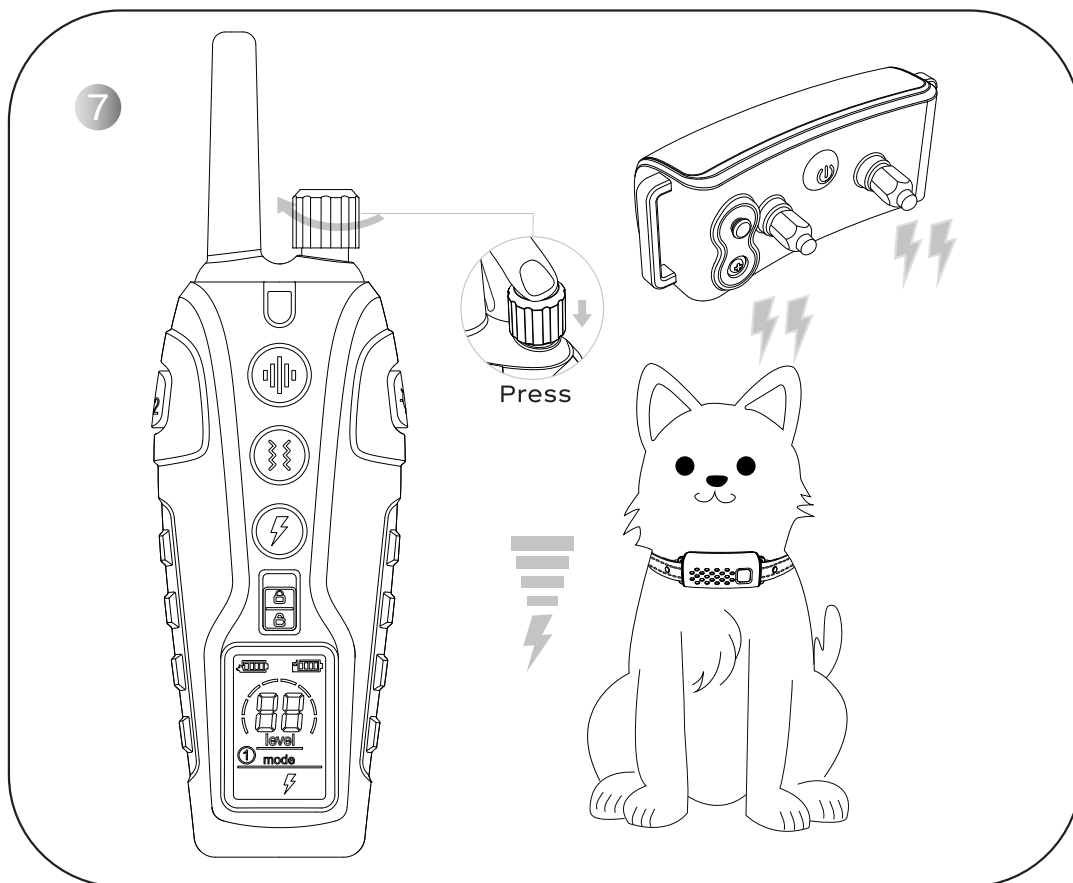
Turn on the Remote Transmitter by pressing and holding the On/Off (Channel) Button for 2 seconds.



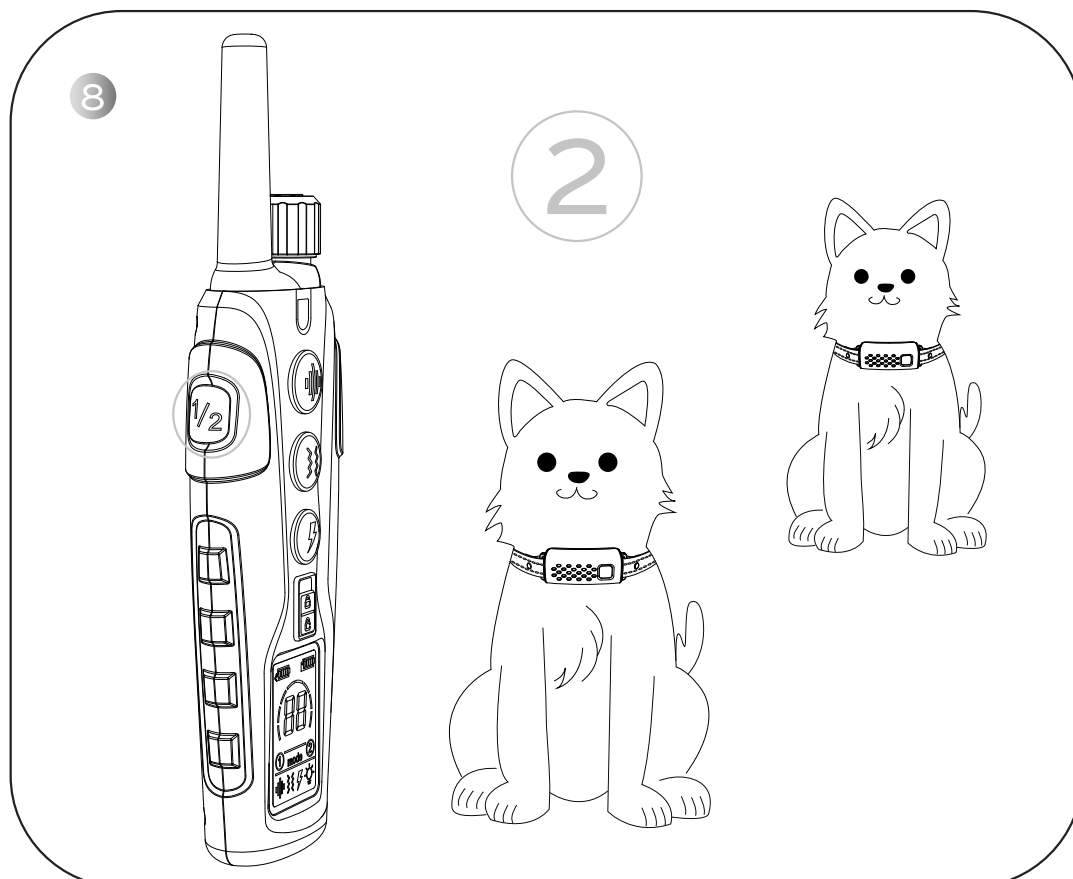
Warning Tone Command: Press the Warning Tone Button, and the green Indicator Light on the Remote Transmitter rapidly lights up. The Receiver will deliver a warning tone, and the green LED Indicator light on the Receiver comes up simultaneously. Press the Adjustment Knob to choose the Warning Tone Mode and then rotate the Adjustment Knob to adjust the warning tone level.



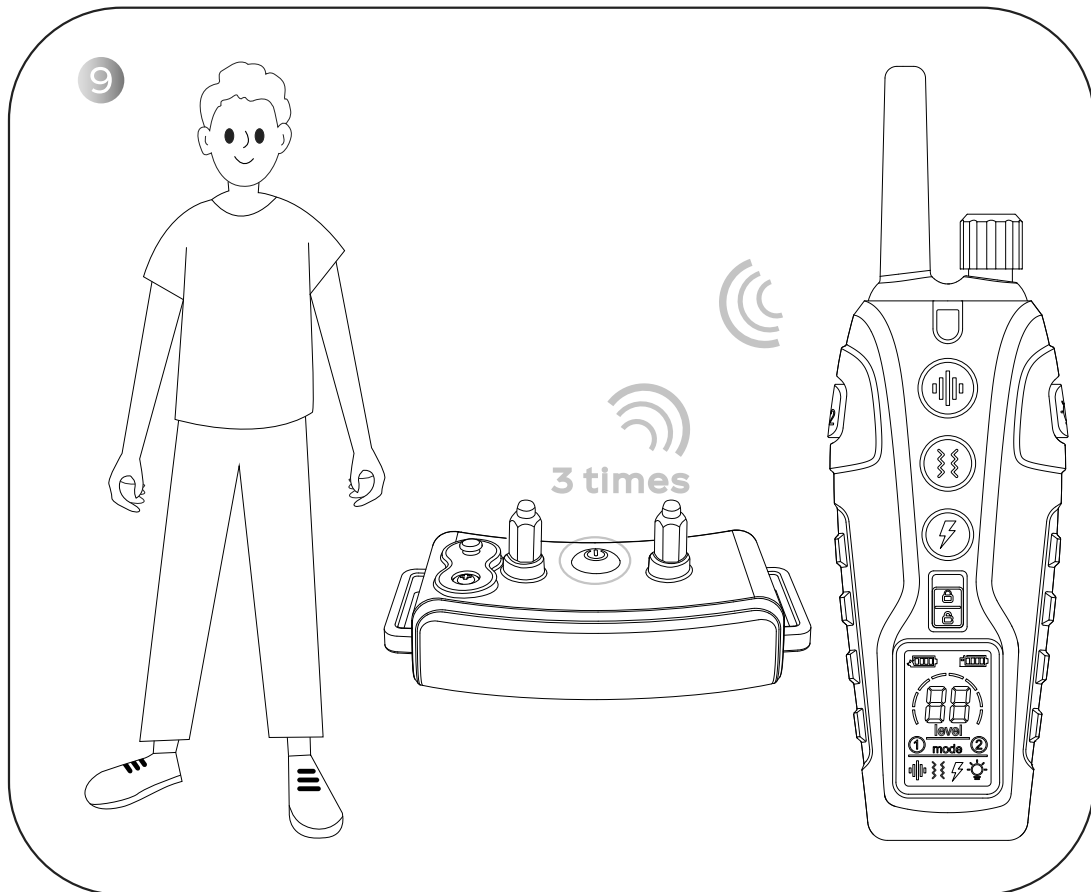
Vibration Command: Press the Vibration Button, and the green Indicator Light on the Remote Transmitter rapidly lights up. The Receiver will deliver vibration, and the green LED Indicator light on the Receiver comes up simultaneously. Press the Adjustment Knob to choose the Vibration Mode and then rotate the Adjustment Knob to adjust the vibration level.



Shock Command: Press the Shock Button, and the red Indicator Light on the Remote Transmitter rapidly lights up. The Receiver will deliver a shock, and the green LED Indicator light on the Receiver comes up simultaneously. Press the Adjustment Knob to choose the Shock Mode and rotate the Adjustment Knob to adjust the shock level.



Switch the channel by pressing the On/Off (Channel) Button. This product can train up to 2 dogs.



Steps to pair the Remote Transmitter to an extra Receiver:

1. Change the channel of the Remote Transmitter to Channel 2 by pressing the On/Off (Channel) Button;

2. Press the Power Button on the extra Receiver 3 times until you hear a beeping tone while the green LED Indicator light on the extra Receiver keeps on;

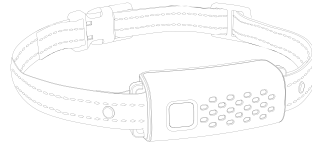
3. Press any one of the Warning Tone, Vibration, or Shock Button, the Receiver will respond respectively as the Receiver beeps 3 times while the green LED Indicator light goes off;

Please refer to “VIII. Pairing Up” on page 13 for tips on the pairing process.

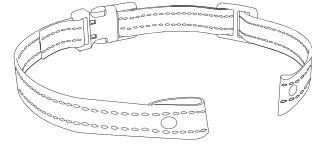
III. Package Content



Remote Transmitter



Receiver



Nylon Collar



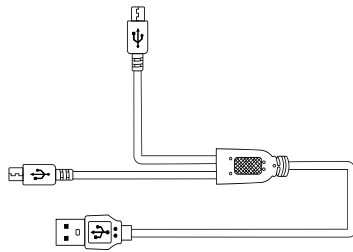
Test Bulb Tool



Metal Prongs



Silicone Caps



Charging Cable

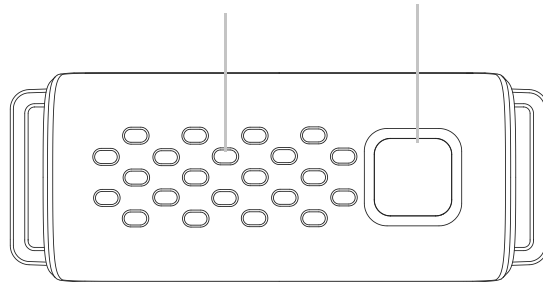


User Manual

IV. Product Overview

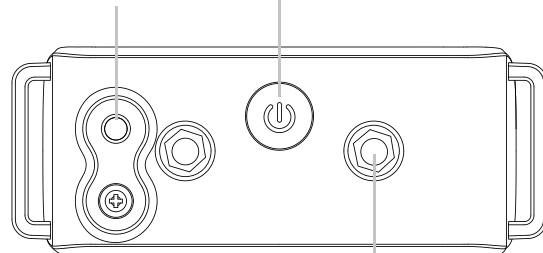
Receiver

Speaker LED Indicator



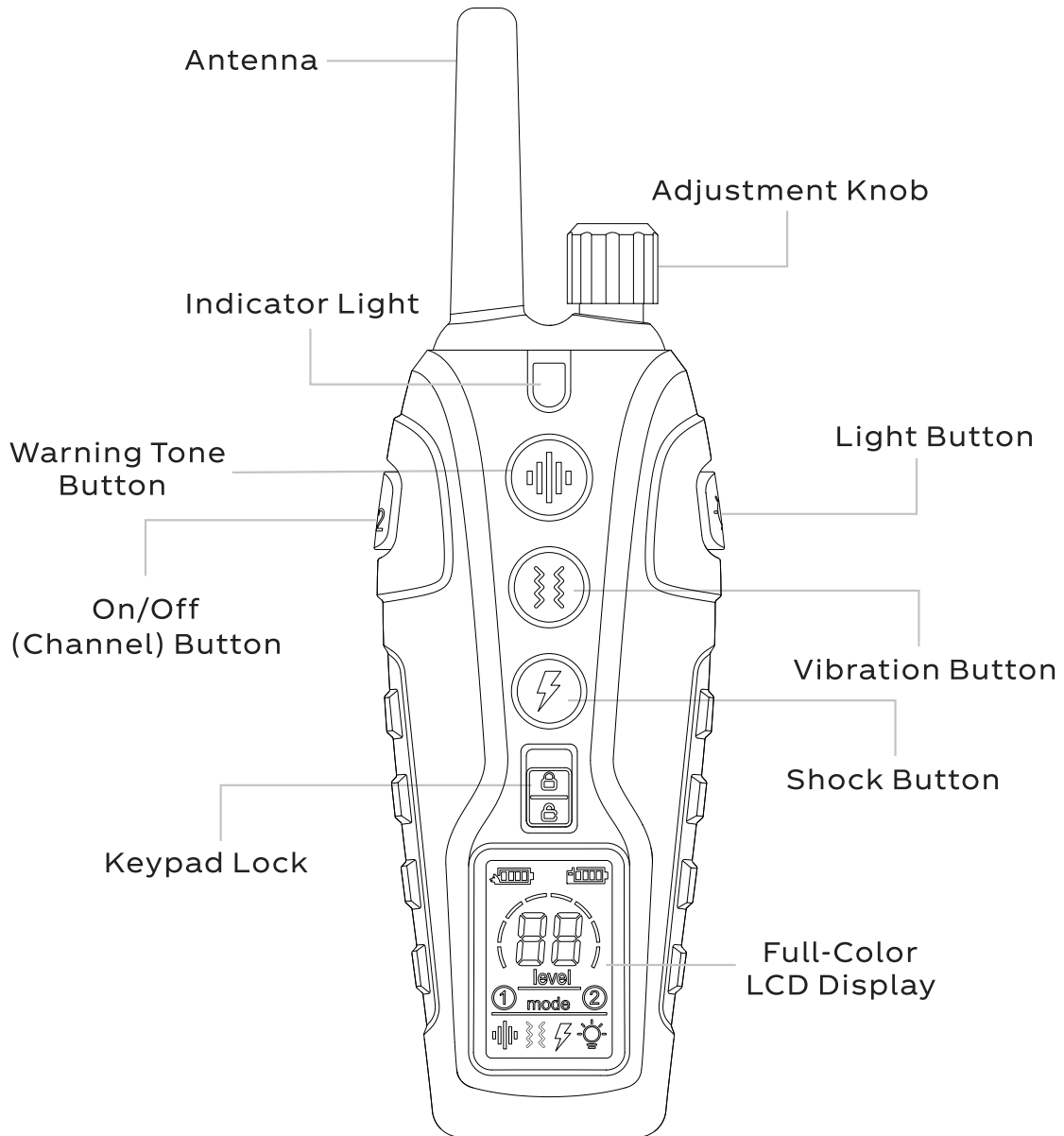
Charging Jack

Power Button



Contact Points

Remote Transmitter

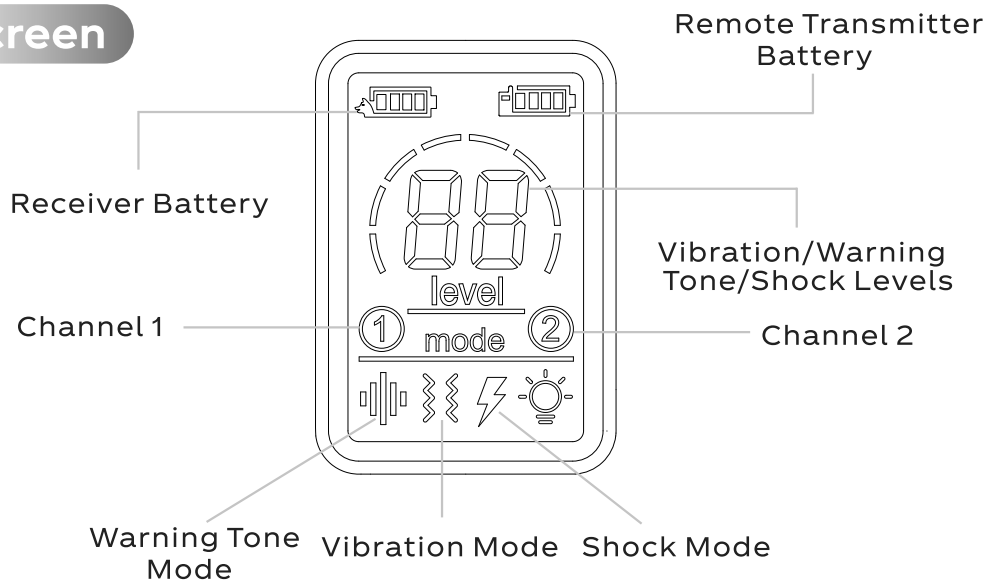


Note:

(1) The icon “88” will be displayed when the Remote Transmitter toggles to the lock state.

(2) The Remote Transmitter will go into a sleep mode if no operation in one minute.

Screen



Note:

(1)With the Receiver and the Remote Transmitter on, the Receiver Battery icon will be displayed when pressing any of the Function Buttons, as the Receiver is successfully paired with the Remote Transmitter.

(2)If the Receiver is turned off, the Receiver Battery will keep displaying its level before shutdown on the Remote Transmitter.

How the System Works

The Remote Training Collar is easy to use with an advanced digital display that tells you exactly what level of stimulation you are using.

The Remote Training Collar assists you in controlling your dog without a leash.

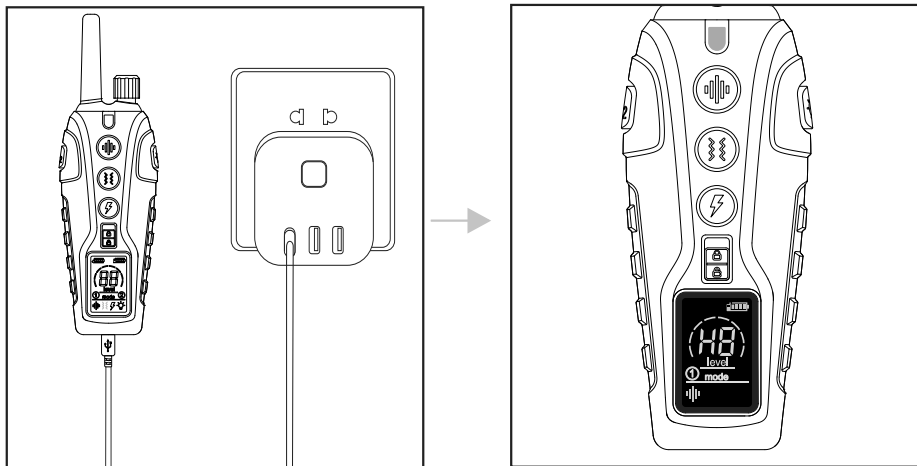
At the push of a button, your Remote Transmitter sends a signal activating your dog's Receiver. He receives a safe but annoying stimulation. He'll quickly learn the association between his behavior and your correction; in no time, you'll have a better-behaved dog. The Remote Training Collar has been proven safe, comfortable, and effective for both small and large dog breeds.

Using the Remote Training Collar consistently and correctly, any basic obedience commands can be taught and will help to correct many misbehaviors that your dog exhibits.

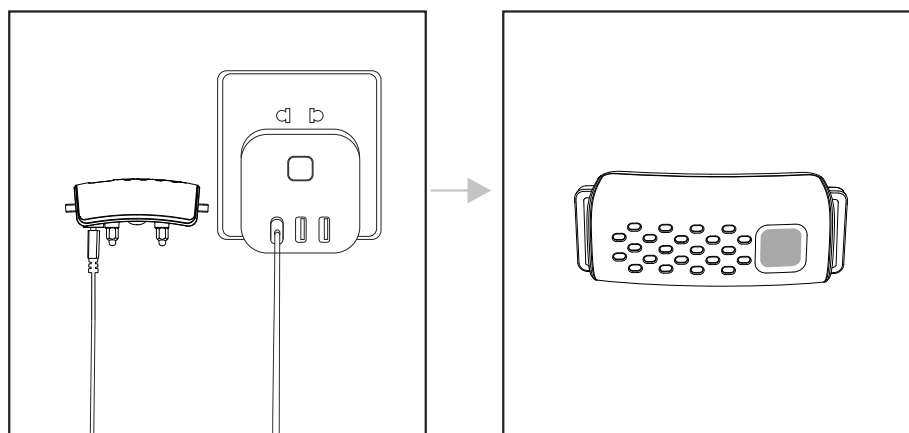
IV. Setting Up

1.Charge the Product

Remote Transmitter: charge the device until the rapid flashing green Indicator light becomes constantly on, which will take around 2-3 hours.



Receiver: charge the device until the rapid flashing green LED Indicator light becomes constantly on, which will take around 2-3 hours.

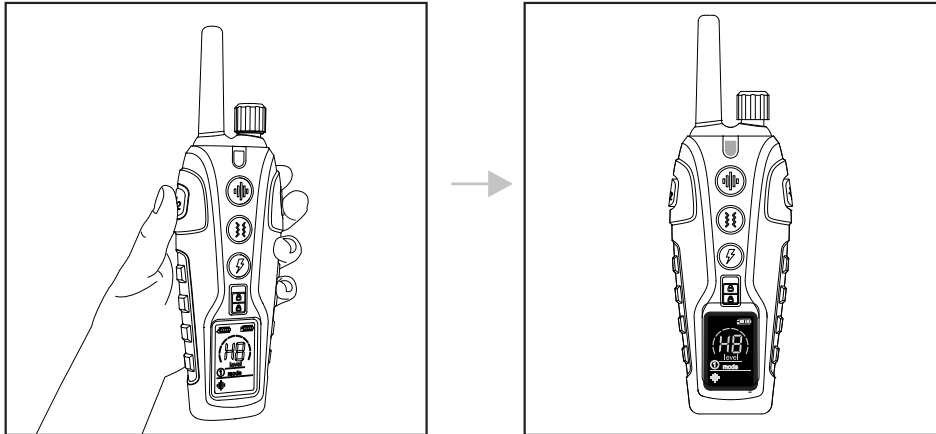


Warning:

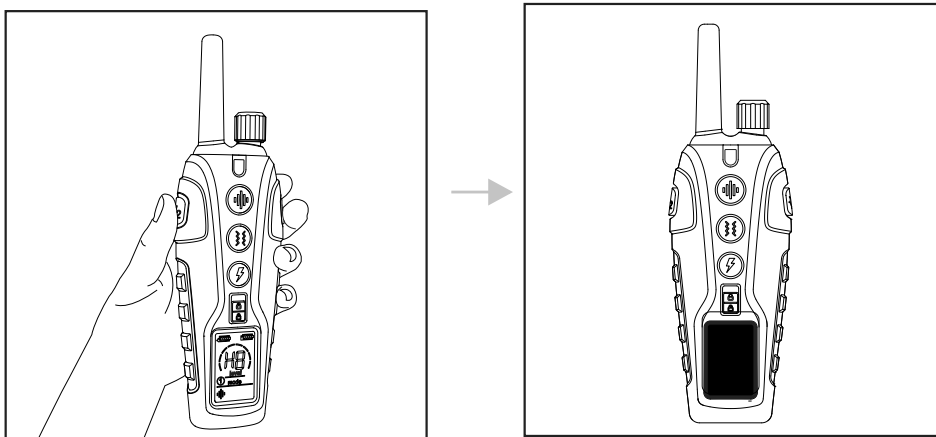
Please use a charger with a 5V output voltage that can always be seen on the surface of it. If charged with a charger with an output voltage over 5V, the Receiver will deliver a rapid warning tone and stop charging automatically, and the Remote Transmitter will stop charging automatically with the colorful indicator rapidly blinking in red.

2. Turn On/Off the Product

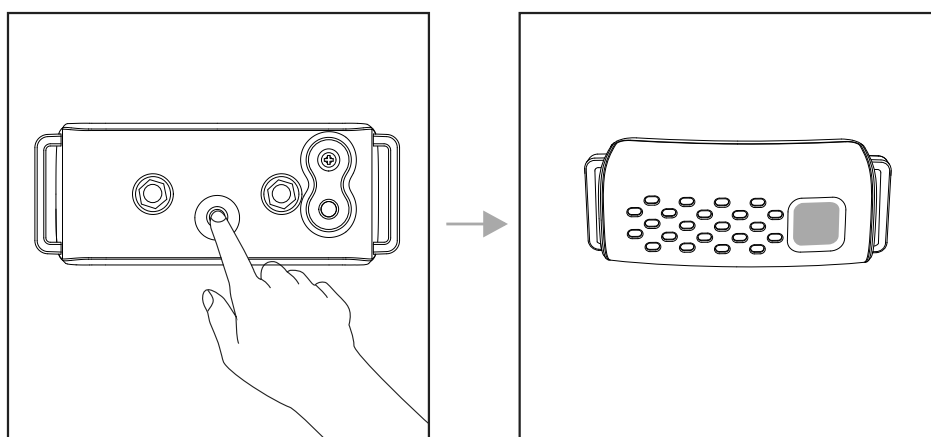
Turn on the Remote Transmitter by pressing and holding the On/Off (Channel) Button for 2 seconds.



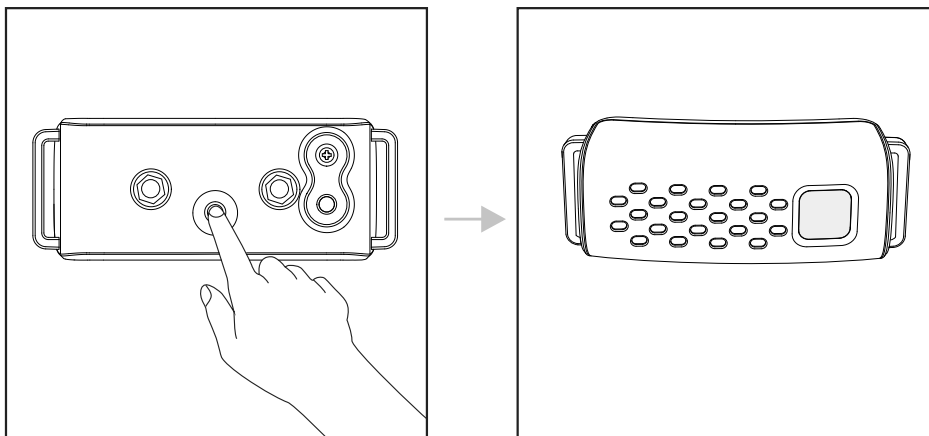
Turn off the Remote Transmitter by pressing and holding the On/Off (Channel) Button for 3 seconds.



Turn on the Receiver by pressing and holding the Power Button for 3 seconds with a short beeping and vibration to indicate that the Receiver turns on, as the green LED Indicator light blinks regularly.



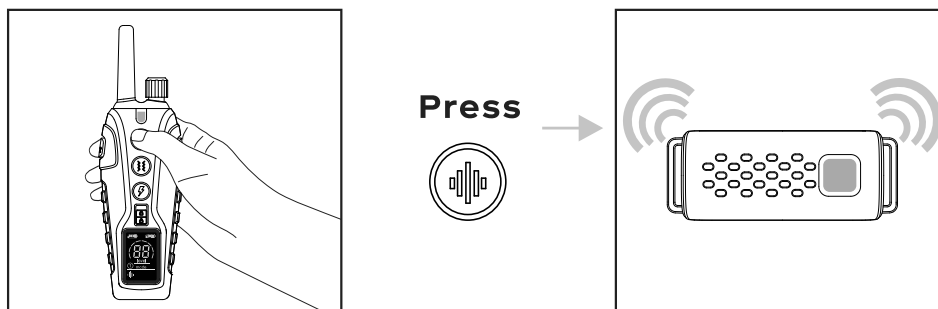
Turn off the Receiver by pressing and holding the Power Button for 3 seconds with a long beeping to indicate that the Receiver turns off, as the green LED Indicator light stops blinking.



VI. Training Modes

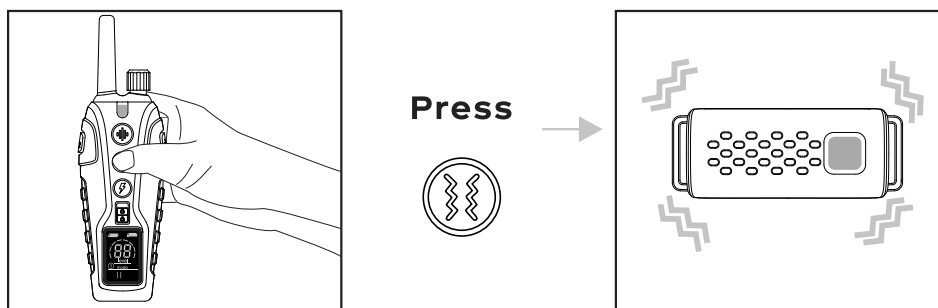
1.Warning Tone Mode

Press the Warning Tone Button and the Receiver will deliver a warning tone. It will cut off automatically if you press and hold the Warning Tone Button for 10 seconds. There is a total of 8 levels of Warning Tone for training which you can adjust by rotating the Adjustment Knob.



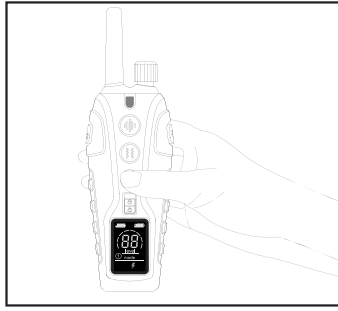
2.Vibration Mode

Press the Vibration Button and the Receiver will deliver a vibration. It will cut off automatically if you press and hold the Vibration Button for 10 seconds. There is a total of 16 levels of Vibration for training which you can adjust by rotating the Adjustment Knob.

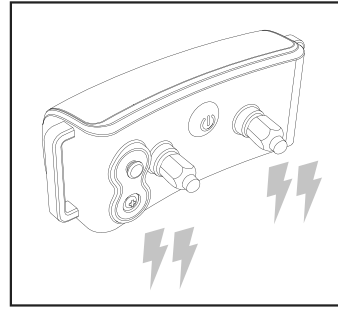


3.Shock Mode

Press the Shock button and the Receiver will deliver a static shock. It will cut off automatically if you press and hold the Shock button for 10 seconds. There is a total of 99 levels of Shock for training which you can adjust by rotating the Adjustment Knob.



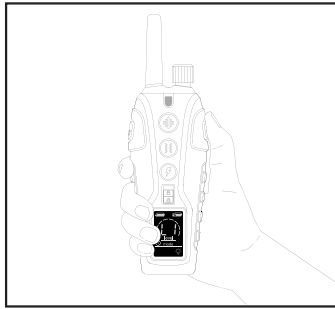
Press



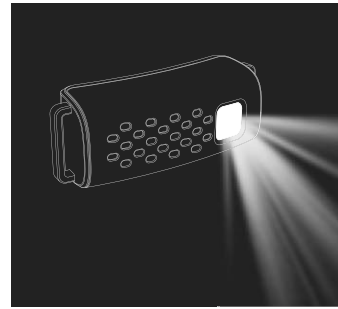
4. Light Mode

There is a total of two modes for the Light Mode: L1 for the Illuminating Light Mode, and L2 for the Positioning Light Mode, which you can adjust by pressing or holding the Positioning Light Button.

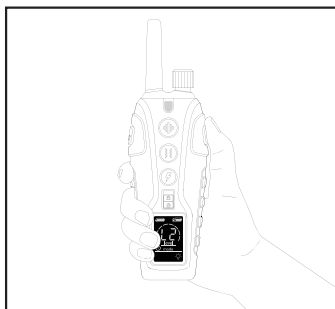
Illuminating Light Mode: Press the Light Button, and the Illuminating Light on the Receiver will be on, while the “L1” icon is shown on the Remote Transmitter. Press the Light Button again, and the Illuminating Light Mode will be off. Once the Illuminating Light is on, it will cut off automatically after 30 minutes if no operation.



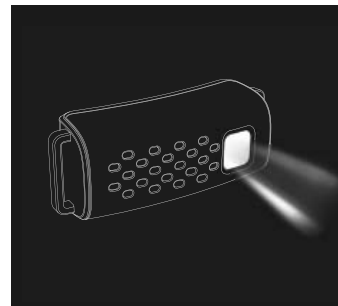
Press



The Positioning Light Mode: Press and hold the Light Button for 2 seconds, and the LED Light blinks rapidly in blue, white and red, while the “L2” icon is shown on the Remote Transmitter. Press and hold the Light Button again for 2 seconds, and the Positioning Light Mode will be off. Once the Positioning Light is on, it will cut off automatically after 30 minutes if no operation.



Press



Note:

Once both of the Light Modes are active, the green Indicator lights up if any other three training operations. After the operation is over, the Indicator Light resumes to the Light Mode you set.