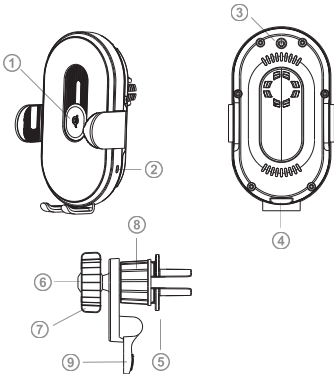


# Smart Wireless Car Charger Manual

## Product Introduction

Thank you for ordering this device. It is a smart wireless car charging phone holder, supports scanning and auto-tracking coils to charging different brands smartphones. Make you easily experience the fun of wireless smart digital products. Please read this manual carefully before operating this device and keep it for future reference.

## Product structure diagram

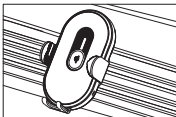


- 1.Movable alignment wireless sensing area
- 2.Work indicator
- 3.Touch button
- 4.Type-C interface
- 5.Car air vent clip
- 6.Multi angle rotating ball
- 7.Fixing nut
- 8.Air vent clip nut
- 9.Air vent clip support

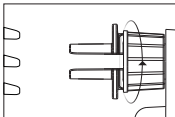
## Instructions

### Air vent clip fixing method

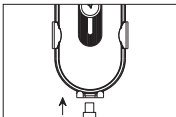
1.Looseen the air vent clip nut, and insert the clip into the air conditioner blade



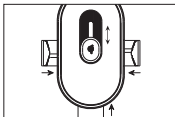
2.Rotate and tighten the Air vent clip nut



3.Insert the Type-c data cable to the port, the clamp arms will automatically open.



4.Place the phone on the holder, the arm will auto close and lock, and then auto-scanning the coil and charging

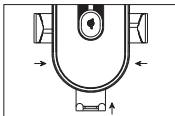


### Electric clamp arm, please don't take out the phone forcibly by hand

Touch the button on the top of the car holder when necessary, the clamp arms will automatically open



Memory function: after the first coil alignment, it will charge immediately if place the same phone on the device



## Product parameters

Input: 5.0/2A;9.0V/2A;12V/1.5A (MAX)

Power: 5W,7.5W,10W,15W (MAX)

Receiving distance: 2-8mm

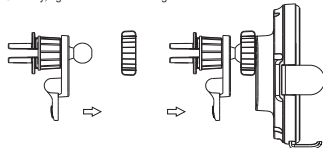
Product weight: Bare metal 182g With clip 205g

## NOTE:

- \* Keep out of reach of children.
- \* Do not use under wet conditions.
- \* Please do not make any change to the product by yourself.
- \* Please avoid a strong collision of the product.
- \* Do not disassemble and repair the product if you are not a professional.
- \* Do not use external force to move the clamp arm.
- \* The product needs to be equipped with QC2.0/QC3.0 and other formally certified car chargers to fit.
- \* The product uses the principle of wireless charging and capacitive sensing to make charging more convenient.
- \* The product has a built-in battery. Please touch the button to open the clip arm after charging for 5 minutes and disconnecting the power.

## Installation steps

- 1.Please put the rotary ball of the car phone holder into the fixing nut first;
- 2.Then press the rotary ball and nut into the car phone holder;
- 3.Finally, tighten the nut according to individual needs.



- ★ The product has a foreign body detection function. It will affect the wireless charging usage if equipped with ring holders, metal objects, or other stuff that increases the phone thickness.

## **FCC Requirement**

changes or modifications not expressly approved by the party responsible for compliance could void the user's authority to operate the equipment.

This device complies with Part 15 of the FCC Rules. Operation is subject to the following two conditions:

- (1) this device may not cause harmful interference, and
- (2) this device must accept any interference received, including interference that may cause undesired operation.

Note: This equipment has been tested and found to comply with the limits for a Class B digital device, pursuant to Part 15 of the FCC Rules. These limits are designed to provide reasonable protection against harmful interference in a residential installation. This equipment generates, uses, and can radiate radio frequency energy, and if not installed and used in accordance with the instructions, may cause harmful interference to radio communications. However, there is no guarantee that interference will not occur in a particular installation. If this equipment does cause harmful interference to radio or television reception, which can be determined by turning the equipment off and on, the user is encouraged to try to correct the interference by one or more of the following measures:

- Reorient or relocate the receiving antenna.
- Increase the separation between the equipment and receiver.
- Connect the equipment into an outlet on a circuit different from that to which the receiver is connected.
- Consult the dealer or an experienced radio/TV technician for help.