

105g铜版纸，双面单黑印刷

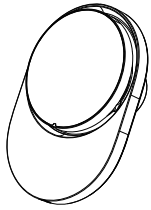
正面

Installation Instructions

Magnetic Car Mount Wireless Charger

User Manual

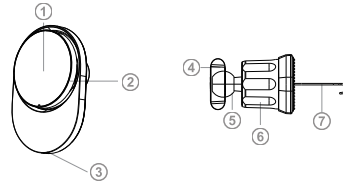
Model No. M5/M5Pro



Brochure

Thank you for choosing this product. This product is a smart wireless charger car phone holder with smaller size and simple appearance, supports a single channel of maximum 15W output. Input voltage mutation detection, overcurrent detection, coil peak limit, overheat limit to ensure that the receiving phone in a safe working range. Built-in ring magnet, strong stable suction, mobile phone automatically adsorb when approaching the product and align with the wireless charging area, 360° free rotation, make driving safer. Please read this manual carefully before using this product and keep it for your future reference.

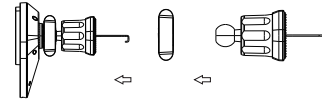
Product details



1. Charging sending face
2. Indicator
3. Type-C charging port
4. Fixed nut
5. Multi-angle rotate ball
6. Locking Knob
7. Telescopic Hook

Air outlet mount installation procedure

1. Tread the nut into the rotate ball of the mount.
2. Then press the universal rotary ball and nut into the bracket.
3. Put the air vent mount into air grille.



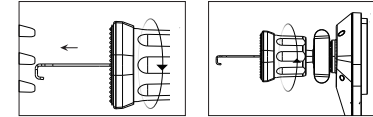
Product parameters

Model: M5/M5Pro
 Input: 5V/9V/12V 2A(MAX)
 Power: 15W(MAX)
 Receive distance: < 6mm
 Dimension: 66.4*42.2*95.8mm
 Weight: including clips=127.7g
 Material: PC+ABS

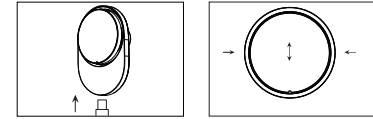
Instructions

Installation method

1. Loosen the nut of the air outlet mount and insert the mount into air outlet mount.
2. Turn and tighten the nut on the mount.



3. Adjust the angle, connect Type-C cable, and the indicator turn on.



4. mobile phone automatically adsorb when approaching the product and align with the wireless charging area.

反面

Precautions

- Keep out of reach of children.
- Do not use in damp environment.
- Please do not dismantle the product without permission.
- Avoid to use the way in whack, bump, impact.
- Do not repair this product if you are not a professional.
- Please use the QC2.0/QC3.0 adapter for charging the product.
- The back of the phone cannot be equipped with ring holder(socket), and other items beyond the range of the phone's wireless charging reception. Otherwise, the charging power will be affected.

FCC Requirement

Any changes or modifications not expressly approved by the party responsible for compliance could void the user's authority to operate the equipment.

This device complies with Part 15 of the FCC Rules.

Operation is subject to the following two conditions:

- (1) this device may not cause harmful interference, and
- (2) this device must accept any interference received, including interference that may cause undesired operation.

Note: This equipment has been tested and found to comply with the limits for a Class B digital device, pursuant to Part 15 of the FCC Rules. These limits are designed to provide reasonable protection against harmful interference in a residential installation. This equipment generates, uses, and can radiate radio frequency energy, and if not installed and used in accordance with the instructions, may cause harmful interference to radio communications. However, there is no guarantee that interference will not occur in a particular installation. If this equipment does cause harmful interference to radio or television reception, which can be determined by turning the equipment off and on, the user is encouraged to try to correct the interference by one or more of the following measures:

- Reorient or relocate the receiving antenna.
- Increase the separation between the equipment and receiver.
- Connect the equipment into an outlet on a circuit different from that to which the receiver is connected.
- Consult the dealer or an experienced radio/TV technician for help.

This equipment complies with FCC radiation exposure limits set forth for an uncontrolled environment.

This equipment should be installed and operated with a minimum distance of 20cm between the radiator & your body.

This transmitter must not be co-located or operating in conjunction with any other antenna or transmitter.

