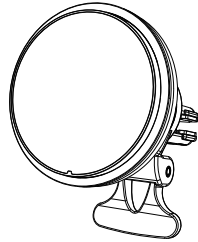


正面

## 磁吸车载无线充支架

### 使用说明书

型号: M2



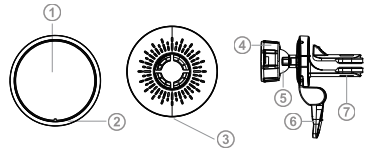
#### 产品介绍

感谢您购买本公司产品,本产品是一款磁吸无线充支架产品。本产品尺寸小巧,外观简洁,支持单路最大15W输出,输入电压突变检测,过流检测,线圈峰值限制,过热限制,以保证接收手机在安全工作范围。

内置环形磁铁,强磁吸力,手机靠近产品附近自动磁吸对准无线充电区域,随放随充,横竖多角度使用模式,360°旋转,自由视角,行车导航更安全。

使用本产品前请认真阅读本说明书并妥善保存,以备查阅。

#### 产品明细图



- 1、充电感应面 2、工作指示灯 3、Type-C接口
- 4、固定螺母 5、多角度旋转球 6、支撑支架 7、空调出风夹

#### 出风口夹安装步骤

1. 先将车载支架的方向旋转球头穿上固定螺母;
2. 再将方向旋转球头和螺帽用力插入支架螺母中;
3. 将出风夹插入空调出风口;



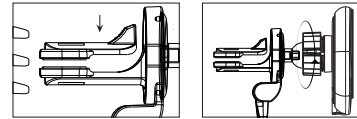
#### 产品参数

型号: M2  
 输入特性: 5V、9V、12V/2A(MAX)  
 功率: 5W,7.5W,10,15W(MAX)  
 接收距离: < 6mm  
 产品尺寸: 64mm(直径)\*33mm(厚度)  
 产品重量: 带夹子约79g

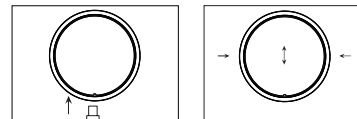
#### 使用说明

##### 出风夹装配方式

1. 拧紧空调出风夹螺母,将出风夹插入空调出风口;(最下端叶片)
2. 旋转拧紧空调出风夹螺母;



3. 调整好角度,将Type-C数据线插入,指示灯亮起;
4. 手机靠近支架,磁吸自动吸附手机对位充电。



#### 注意事项

- 请放置在儿童接触不到的地方;
- 不能在潮湿环境下使用;
- 禁止私自拆卸产品;
- 请避免强烈摔打,碰撞此产品;
- 非专业人员,请勿自行打开,维修此产品;
- 特别注意本产品需要配备QC2.0/QC3.0等正规认证车载充电器来适配;
- 手机背面不能带有指环扣、增加手机厚度物品或金属物件,有以上物体将影响手机无线充的使用和充电功率。

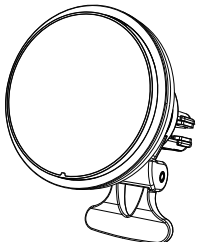
反面

## Installation Instructions

### Magnetic Car Mount Wireless Charger

#### User Manual

Model No. M2

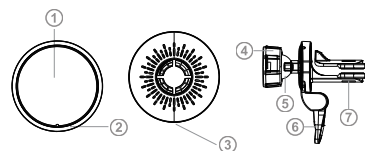


#### Brochure

Thank you for choosing this product. This product is a smart wireless charger car phone holder with smaller size and simple appearance, supports a single channel of maximum 15W output, input voltage mutation detection, overcurrent detection, coil peak limit, overheat limit to ensure that the receiving phone in a safe working range. Built-in ring magnet, strong stable suction, mobile phone automatically adsorb when approaching the product and align with the wireless charging area, 360° free rotation, make driving safer.

Please read this manual carefully before using this product and keep it for your future reference.

#### Product details



- 1、Charging sending face 2、Indicator 3、Type-C charging port
- 4、Fixed nut 5、Multi-angle rotate ball 6、Holding mount
- 7、Air vent grille mount

#### Air outlet mount installation procedure

1. Tread the nut into the rotate ball of the mount.
2. Then press the universal rotary ball and nut into the bracket.
3. Put the air vent mount into air grille.



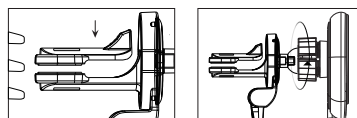
#### Product parameters

Model: M2  
 Input: 5V、9V、12V/2A(MAX)  
 Power: 5W, 7.5W, 10W, 15W(MAX)  
 Receive distance: < 6mm  
 Dimension: 64mm (Diameter)\*33mm(Thickness)  
 Weight: including clips≈79g

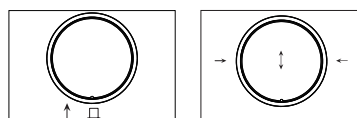
#### Instructions

##### Installation method

1. Tight the nut of the air outlet mount and insert the mount into air outlet mount. (The blade on the base)
2. Turn and tighten the nut on the mount.



3. Adjust the angle, connect Type-C cable, and the indicator turn on.
4. Mobile phone automatically adsorb when approaching the product and align with the wireless charging area.



#### Precautions

- Keep out of reach of children.
- Do not use in damp environment.
- Please do not dismantle the product without permission.
- Avoid to use the way in whack, bump, impact.
- Do not repair this product if you are not a professional.
- Please use the QC2.0/QC3.0 adapter to charging the product.
- The back of the phone cannot be equipped with ring holder (socket), and other items beyond the range of the phone's wireless charging reception. Otherwise, the charging power will be affected.

#### FCC Requirement

Any changes or modifications not expressly approved by the party responsible for compliance could void the user's authority to operate the equipment.

This device complies with Part 15 of the FCC Rules.

Operation is subject to the following two conditions:

- (1) this device may not cause harmful interference, and
- (2) this device must accept any interference received, including interference that may cause undesired operation.

Note: This equipment has been tested and found to comply with the limits for a Class B digital device, pursuant to Part 15 of the FCC Rules. These limits are designed to provide reasonable protection against harmful interference in a residential installation.

This equipment generates, uses, and can radiate radio frequency energy, and if not installed and used in accordance with the instructions, may cause harmful interference to radio communications. However, there is no guarantee that interference will not occur in a particular installation. If this equipment does cause harmful interference to radio or television reception, which can be determined by turning the equipment off and on, the user is encouraged to try to correct the interference by one or more of the following measures:

- Reorient or relocate the receiving antenna.
- Increase the separation between the equipment and receiver.
- Connect the equipment into an outlet on a circuit different from that to which the receiver is connected.
- Consult the dealer or an experienced radio/TV technician for help.

This equipment complies with FCC radiation exposure limits set forth for an uncontrolled environment.

This equipment should be installed and operated with a minimum distance of 20cm between the radiator & your body.

This transmitter must not be co-located or operating in conjunction with any other antenna or transmitter.