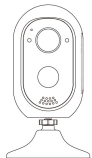


This guide is applicable to various types of battery cameras. Some of the illustrations are based on BA12-H.

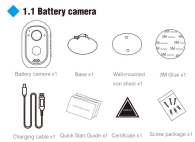
Smart IP Camera with Battery



Please read the Quick Start Guide carefully before using the product and keep it properly.

1. Packing list

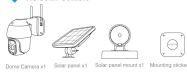
Product sales configuration is different. Please refer to the actual product.



1.2 Battery Bullet Camera

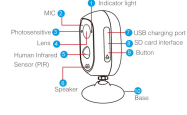


1.3 Solar Camera



2. Interface description

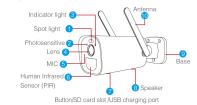
2.1 Battery camera



The instructions of LED light:

- Green light + red light: Always on. The camera is being recharged remotely (green light).
- Green light is always on: The device is turned on or is woken up.
- Green light flashes continuously: Upgrading.
- Green light flashes continuously and slowly: Charging.
- Red light flashes 3 times quickly: Power off.
- Red light flashes continuously fast: Matching code.
- Red light flashes continuously slowly: Connecting to the Internet.

2.2 Battery Bullet Camera



- Red light is always on: Low battery.
- The traffic light is always off: In standby.

Button operation for single button model:

- Press and hold for 2s in the off state: Power-on (green light for 1s).
- Press continuously for 3 times: Power-off (red light flashes 3 times).
- Press and hold for 4s: Reset to enter the pairing state (red light flashes).

Button operation for Two-button model:

- Press the power button and hold 2s: turn on or turn off.
- Press the reset button and hold 5s: reset and enter the pairing state (red light flashes continuously after the indicator voice).
- Press the reset button twice for continuous reading: (Without working mode switch (indicator voice)).

3. Working network diagram

The battery camera supports 3 connecting modes:

- Remote view by connecting the router.



4. Setup and installation

4.1 Boot up

When remote view by connecting to the router and direct connection method, please boot the device after inserting the SD card. When using by pairing to the wireless NVR, please make sure the memory (SD card, HDD etc.) of the wireless NVR is ready.



When remote view by connecting the router, the camera's WiFi should be connected to the router and the video is stored on the SD card of the camera or on the Cloud. When using in the local direct connecting mode, the WiFi of your mobile phone should be connected to the camera and the video can only store on the SD card of the camera. When working by pairing to the wireless NVR, the video is stored on the NVR and you can use mobile phone remotely to view and set up the camera through the wireless NVR.

4.1.1 Battery camera

Please press the button for 2s to turn on the battery camera. If the button cannot be turned on, please plug in the charging power cord and the camera will turn on automatically.

4.1.2 Battery Bullet Camera

Please press the button for 2s to turn on the battery bullet camera. If the button cannot be turned on, please plug in the charging power cord and the camera will turn on automatically.

4.1.3 Solar Dome Camera

Plug the power cord of the solar panel into the tail cable of the solar battery camera. If you cannot turn on the phone after plugging it in, please open the speaker cover and plug in the power supply to charge or put the solar panel in the sun for 1-2 hours and try again.

4.2 App Installation

4.2.1 APP Download and Installation

Users can search "TosCloud" on APP store or "IP PMS" on Google Play or scan the QR code below to install the APP. Note: The iOS system, it requires iOS 9.0 version or above. For Android, Android 5.0 or above.

4.2.2 Account login

Account login: On the login interface, enter the account (phone number/email) and the corresponding password and click the "OK" button to log in. This party login, APP supports third-party login. Click the third-party social software icon, jump to the APP to complete the authorization and log in.

4.3 Add Camera to APP

Adding method 1: Scanning directly the QR code on the camera when the battery camera is used by connecting.

Put both of your mobile phone and camera near the router and the distance should be 30-100cm.

After the battery camera is power-on there is a voice prompt "start match code" and the red LED light is flashing. (Otherwise please press the RESET button on the camera for 8 seconds, it will be available after the voice prompt "reset successfully".)



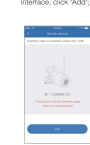
3. Open the APP and click on the "+" in the upper right corner to enter the scan code interface.

4. Scan the QR code on the device.



5. On the search device interface, click "Add".

6. Reset the device and wait for the device indicator to flash and proceed to the next step.



7. To view and use via WiFi or other networks, please select Remote View. If there is no network, if you connect to the camera at close range, please select Direct Connection.



Adding mode when remote view

- Click "Remote View", the device needs to be connected with, enter the password and click "next step".
- Using the device to scan the QR code on the mobile phone according to the operation the figure shows, then proceed to the next step after hearing the prompt tone or seeing the light status.



8. After the network configuration is successful, set the name and password for the device to add successfully.



Adding mode of local direct connection

- Click "local direct connection", set a password for the WiFi of the device itself and proceed to the next step after hearing the prompt tone or seeing the light status.
- Using the device to scan the QR code on the mobile phone according to the operation the figure shows, then proceed to the next step after hearing the prompt tone or seeing the light status.



3. After connecting with its own Wi-Fi according to the pairing instruction, return to APP.



4. Set the name and password for the device, then you can add it to the device list.



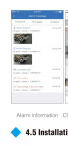
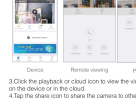
3. Scan the QR code on the wireless NVR body or the screen, and add the device according to the simple settings guided by the APP. The camera can be connected with the wireless NVR or added directly displayed in the device list.



#### 4.4 Notification, Preview and Playback

1. Click the push information or "test" button to view the alarm information of the camera.

2. Click the corresponding play icon on the device list to enter the playback interface to view real-time video and have video recording.

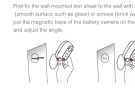


#### 4.5 Installation and placement

1. Place on a desk or table.



2. Fix the battery camera on the wall or glass.



3. Fix the base with screws.



4. Adjust the camera pitch angle in camera control and tighten the fixing screws.



#### 4.5.2 Battery Built Camera

(1) Use the mounting sticker to locate and mark holes, and the camera will then be rolled into the rubber strip.



(2) Fix the base with screws.



(3) Adjust the camera pitch angle in camera control and tighten the fixing screws.



(4) Fix the base with screws.



(5) Adjust the camera pitch angle in camera control and tighten the fixing screws.



(6) The camera can be changed with wall screws.



(7) The camera can be changed with wall screws.



(8) The camera can be changed with wall screws.



(9) The camera can be changed with wall screws.



(10) The camera can be changed with wall screws.



(11) The camera can be changed with wall screws.



(12) The camera can be changed with wall screws.



(13) The camera can be changed with wall screws.



(14) The camera can be changed with wall screws.



(15) The camera can be changed with wall screws.



#### 4.5.3 Solar Dome Camera

(1) Use the mounting sticker to locate and mark holes, and the camera will then be rolled into the rubber strip.



(2) Fix the base with screws.



(3) Adjust the camera pitch angle in camera control and tighten the fixing screws.



(4) Fix the base with screws.



(5) Adjust the camera pitch angle in camera control and tighten the fixing screws.



(6) The camera can be changed with wall screws.



(7) The camera can be changed with wall screws.



(8) The camera can be changed with wall screws.



(9) The camera can be changed with wall screws.



(10) The camera can be changed with wall screws.



(11) The camera can be changed with wall screws.



(12) The camera can be changed with wall screws.



(13) The camera can be changed with wall screws.



(14) The camera can be changed with wall screws.



(15) The camera can be changed with wall screws.



#### 5. Charging instructions

1. Connect the USB power supply to the battery camera.



2. The green light always on, and the indicator is all star (charging is complete).



3. The green light always on, and the indicator is all star (charging is complete).



4. The green light always on, and the indicator is all star (charging is complete).



5. The green light always on, and the indicator is all star (charging is complete).



6. The green light always on, and the indicator is all star (charging is complete).



7. The green light always on, and the indicator is all star (charging is complete).



8. The green light always on, and the indicator is all star (charging is complete).



9. The green light always on, and the indicator is all star (charging is complete).



10. The green light always on, and the indicator is all star (charging is complete).



11. The green light always on, and the indicator is all star (charging is complete).



12. The green light always on, and the indicator is all star (charging is complete).



13. The green light always on, and the indicator is all star (charging is complete).



14. The green light always on, and the indicator is all star (charging is complete).



15. The green light always on, and the indicator is all star (charging is complete).



#### 6. Camera pairing to wireless NVR

The battery camera is paired with the NVR that has already been paired with the wireless NVR. No code matching is required.



1. Press the battery camera on the wireless NVR.



2. The green light always on, and the indicator is all star (charging is complete).



3. The green light always on, and the indicator is all star (charging is complete).



4. The green light always on, and the indicator is all star (charging is complete).



5. The green light always on, and the indicator is all star (charging is complete).



6. The green light always on, and the indicator is all star (charging is complete).



7. The green light always on, and the indicator is all star (charging is complete).



8. The green light always on, and the indicator is all star (charging is complete).



9. The green light always on, and the indicator is all star (charging is complete).



10. The green light always on, and the indicator is all star (charging is complete).



11. The green light always on, and the indicator is all star (charging is complete).



12. The green light always on, and the indicator is all star (charging is complete).



13. The green light always on, and the indicator is all star (charging is complete).



14. The green light always on, and the indicator is all star (charging is complete).



#### 7. Troubleshooting

1. Make sure your phone, camera, and router are connected to the internet.



2. Make sure the camera cannot support connection to the NVR.



3. Check the router name and password on camera.



4. Check the channel settings of the wireless NVR.



5. Check the channel settings of the wireless NVR.



6. Check the channel settings of the wireless NVR.



7. Check the channel settings of the wireless NVR.



8. Check the channel settings of the wireless NVR.



9. Check the channel settings of the wireless NVR.



10. Check the channel settings of the wireless NVR.



11. Check the channel settings of the wireless NVR.



12. Check the channel settings of the wireless NVR.



13. Check the channel settings of the wireless NVR.



14. Check the channel settings of the wireless NVR.



15. Check the channel settings of the wireless NVR.



#### 8. FAQ

Q: Why does the battery run out quickly?



A: The app will start the video recording time when playback video. Please check if there are more videos every day. If there are many large files, please try to lower the trigger sensitivity setting.

Q: How to confirm that the network connection between the camera and the router or wireless NVR is normal?



A: Activate trigger PPI in front of the camera and wait for about 10s.

If the camera flashes red, it means that the camera cannot connect to the router or wireless NVR normally.

If it is connected to wireless NVR, you can click play from the corresponding channel of the NVR browser. The video can be played, the connection is normal.

Q: Why does the battery run out quickly?



A: The app will start the video recording time when playback video. Please check if there are more videos every day. If there are many large files, please try to lower the trigger sensitivity setting.

Q: How to confirm that the network connection between the camera and the router or wireless NVR is normal?



A: Activate trigger PPI in front of the camera and wait for about 10s.

If the camera flashes red, it means that the camera cannot connect to the router or wireless NVR normally.

If it is connected to wireless NVR, you can click play from the corresponding channel of the NVR browser. The video can be played, the connection is normal.

Q: Why does the battery run out quickly?



A: The app will start the video recording time when playback video. Please check if there are more videos every day. If there are many large files, please try to lower the trigger sensitivity setting.

Q: How to confirm that the network connection between the camera and the router or wireless NVR is normal?



A: Activate trigger PPI in front of the camera and wait for about 10s.

If the camera flashes red, it means that the camera cannot connect to the router or wireless NVR normally.

If it is connected to wireless NVR, you can click play from the corresponding channel of the NVR browser. The video can be played, the connection is normal.

Q: Why does the battery run out quickly?



A: The app will start the video recording time when playback video. Please check if there are more videos every day. If there are many large files, please try to lower the trigger sensitivity setting.

Q: How to confirm that the network connection between the camera and the router or wireless NVR is normal?



A: Activate trigger PPI in front of the camera and wait for about 10s.

If the camera flashes red, it means that the camera cannot connect to the router or wireless NVR normally.

If it is connected to wireless NVR, you can click play from the corresponding channel of the NVR browser. The video can be played, the connection is normal.

Q: Why does the battery run out quickly?



A: The app will start the video recording time when playback video. Please check if there are more videos every day. If there are many large files, please try to lower the trigger sensitivity setting.

Q: How to confirm that the network connection between the camera and the router or wireless NVR is normal?



A: Activate trigger PPI in front of the camera and wait for about 10s.

If the camera flashes red, it means that the camera cannot connect to the router or wireless NVR normally.

If it is connected to wireless NVR, you can click play from the corresponding channel of the NVR browser. The video can be played, the connection is normal.

#### 9. Base station

Press the SYNC button on the base station for 3 seconds, and the voice prompt "Base station ready" will be heard. The base station is in matching code mode. When the base station prompts "matching code successful", enter the matching code is completed. If the base station prompts "The new device is not found", please repeat steps 2 and 3 above.



1. Press the SYNC button on the base station for 3 seconds, and the voice prompt "Base station ready" will be heard. The base station is in matching code mode. When the base station prompts "matching code successful", enter the matching code is completed. If the base station prompts "The new device is not found", please repeat steps 2 and 3 above.



2. Press the SYNC button on the base station for 3 seconds, and the voice prompt "Base station ready" will be heard. The base station is in matching code mode. When the base station prompts "matching code successful", enter the matching code is completed. If the base station prompts "The new device is not found", please repeat steps 2 and 3 above.



3. Press the SYNC button on the base station for 3 seconds, and the voice prompt "Base station ready" will be heard. The base station is in matching code mode. When the base station prompts "matching code successful", enter the matching code is completed. If the base station prompts "The new device is not found", please repeat steps 2 and 3 above.



4. Press the SYNC button on the base station for 3 seconds, and the voice prompt "Base station ready" will be heard. The base station is in matching code mode. When the base station prompts "matching code successful", enter the matching code is completed. If the base station prompts "The new device is not found", please repeat steps 2 and 3 above.



5. Press the SYNC button on the base station for 3 seconds, and the voice prompt "Base station ready" will be heard. The base station is in matching code mode. When the base station prompts "matching code successful", enter the matching code is completed. If the base station prompts "The new device is not found", please repeat steps 2 and 3 above.



6. Press the SYNC button on the base station for 3 seconds, and the voice prompt "Base station ready" will be heard. The base station is in matching code mode. When the base station prompts "matching code successful", enter the matching code is completed. If the base station prompts "The new device is not found", please repeat steps 2 and 3 above.



7. Press the SYNC button on the base station for 3 seconds, and the voice prompt "Base station ready" will be heard. The base station is in matching code mode. When the base station prompts "matching code successful", enter the matching code is completed. If the base station prompts "The new device is not found", please repeat steps 2 and 3 above.