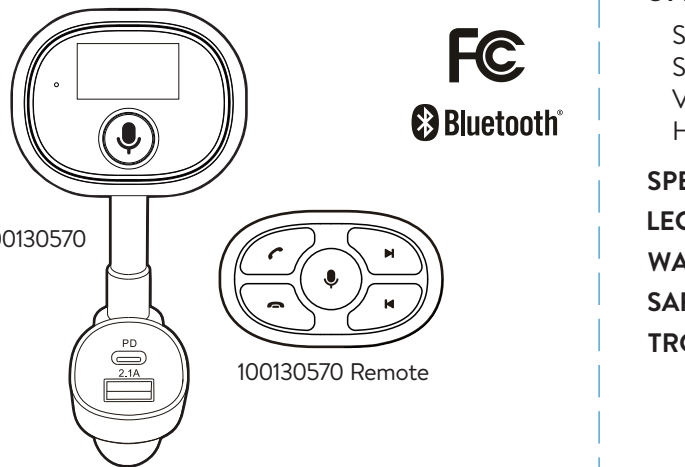


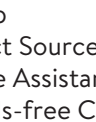


# USER GUIDE

## Bluetooth FM Transmitter Voice Assistant



Model #100130570\_EN\_04/06/2023



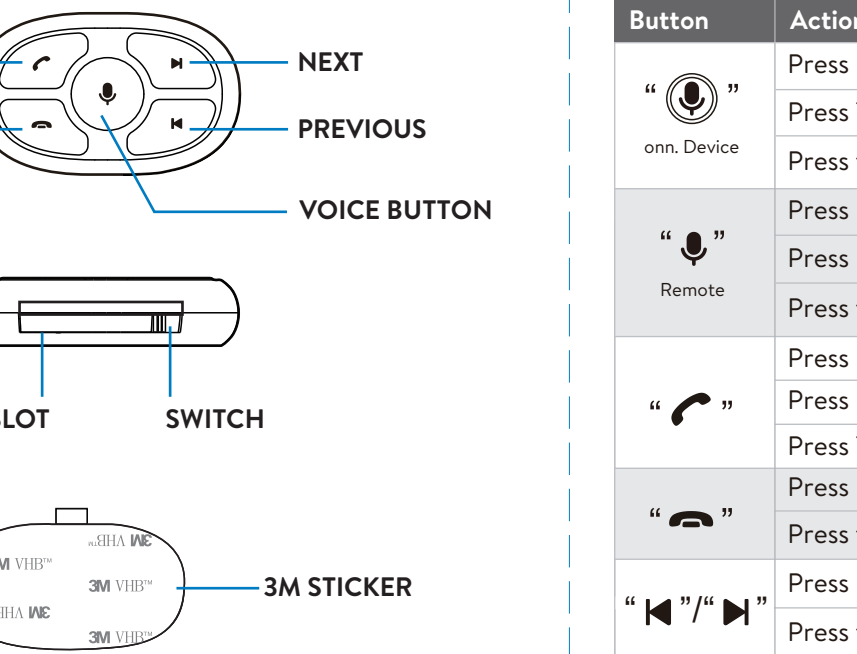
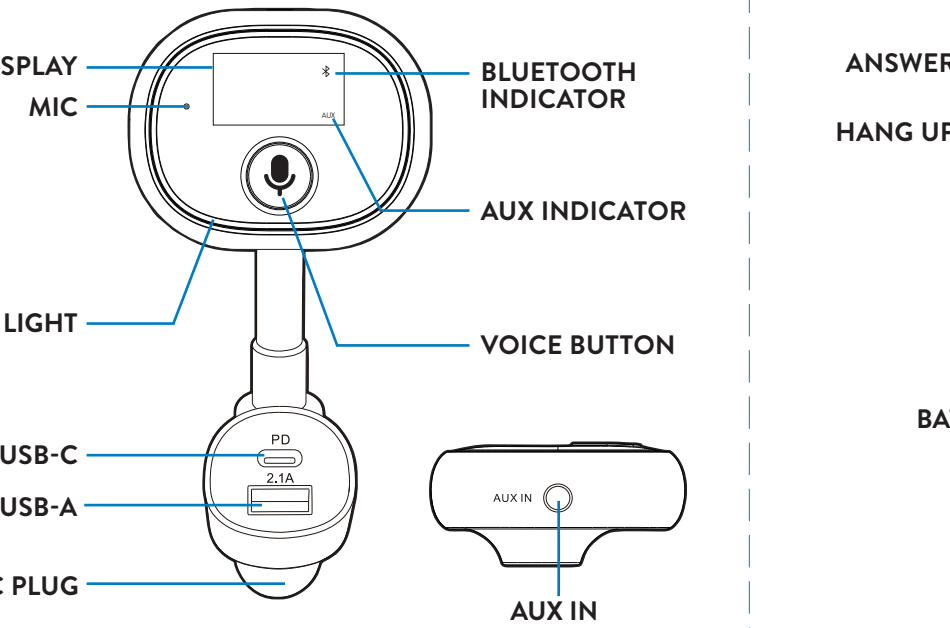
### Contents & Information

- CONTENTS & INFORMATION
  - Features
- OVERVIEW
- CONTROLS
- OPERATION
  - Setup
  - Select Source (Bluetooth, Aux input)
  - Voice Assistant
  - Hands-free Calls
- SPECIFICATIONS
- LEGAL
- WARRANTY
- SAFETY PRECAUTIONS
- TROUBLESHOOTING

### Features

- Push voice button to wake up voice assistant (Smart Device)
  - Native Voice App
- Hands-free calling with built-in microphone
- Bluetooth connection to mobile device (A2DP)
- 8 RGB light modes
  - Red / green / blue light always on
  - Red / green / blue breathing light
  - Turn off / all color cycles
- 30W charging (USB-C and USB-A)
- Remote Control

### Overview



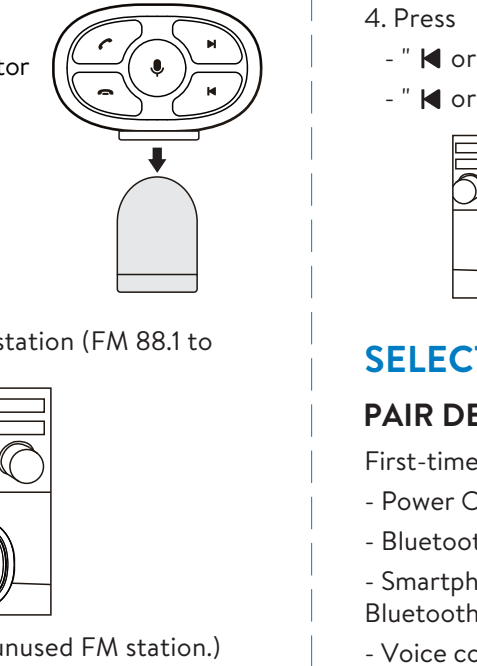
### Controls

Button	Action	Behaviors
"onn. Device" (Microphone icon)	Press	Wake Up Voice Assistant
	Press Twice	Switch RGB Light Mode
	Press for 5 Seconds	Clear Bluetooth Connection
"Remote" (Microphone icon)	Press	Wake Up Voice Assistant
	Press	Private Call / Hands-free Call
	Press for 5 Seconds	Clear Bluetooth Connection
"Phone" (Phone icon)	Press	Pause / Play
	Press Twice	Call Back
"Phone" (Phone icon)	Press	Answer Call
	Press Twice	Call Back
"Phone" (Phone icon)	Press	End / Reject Call
	Press for 2 Seconds	Switch to Bluetooth/AUX
"Left/Right" (Arrow icons)	Press	◀ Back ▶ Next
	Press for 2 Seconds	Enter FM Station Setting

### Operation

#### SETUP

1. Insert DC plug into 12V/24V DC port. Display shows vehicle battery voltage, FM station, Bluetooth indicator status.
2. Stick the remote control in a suitable place with the 3M sticker. (for example: steering wheel)



#### SELECT SOURCE (BLUETOOTH, AUX INPUT)

3. Turn on vehicle radio. Select unused FM station (FM 88.1 to 107.9).
4. Press
  - "◀ or ▶" 2 seconds enter FM station setting.
  - "◀ or ▶" -/+ by 0.1MHz, long press to skip.

#### PAIR DEVICE

- First-time setup:
- Power On
  - Bluetooth indicator flashes in "Pairing Mode"
  - Smartphone connected to onn. device "onn. Voice Bluetooth FM"
  - Voice confirmation of successful connection

#### AUX INPUT

Press "Phone" 2 seconds to change source  
Important:  
Use source device for track controls.

#### CONTROLS

- "◀" Go back
- "▶" Skip song
- "Phone" "Pause / Play"

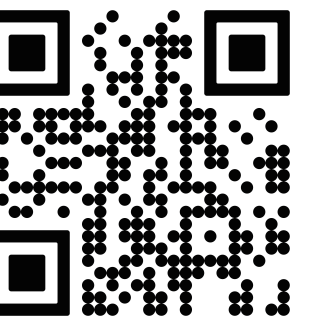
**HAVING TROUBLE? WE CAN HELP** **SAVE THIS USER GUIDE**  
**1-888-516-2630**  
 7 DAYS/WEEK 7:00am- 9:00pm CST  
 Read entire user guide before installation and use



Made in Vietnam

## VOICE ASSISTANTS

### DOWNLOAD AND SET UP THE NATIVE VOICE APP



**native voice**

Use the QR Code provided to download and setup Native Voice on your smartphone and add Voice Assistants to your ONN device. Works for both iOS and Android.

### CONNECT NATIVE VOICE APP WITH ONN. DEVICE

Follow instructions to connect your onn. device to the Native Voice App.  
NOTE: Voice Assistants available over Bluetooth, not AUX.



### ENABLE ONE OR MORE VOICE ASSISTANTS

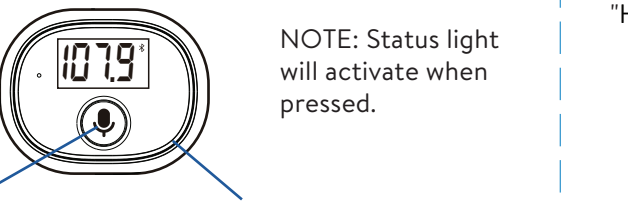
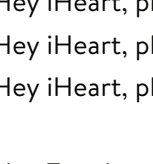
Toggle on Voice Assistants including your smartphone assistant like Siri or Google Assistant.

NOTE: No additional app downloads required.



### TRY A VOICE ASSISTANT

- Press "🎤" on your onn. device
- Hear a tone
- Say "Hey iHeart, play Taylor Swift".
- Wait for response

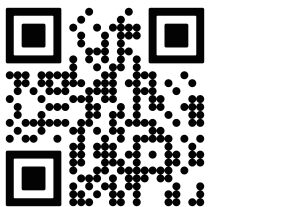


**VOICE BUTTON** **STATUS LIGHT**

NOTE: Status light will activate when pressed.

### EXAMPLE VOICE COMMANDS

- "Hey iHeart, play z100"
- "Hey iHeart, play Harry Styles"
- "Hey iHeart, play Country music"
- "Hey Tuneln, play WDRV"
- "Hey Tuneln, listen to the Yankees game"
- "Hey Tuneln, turn on Bloomberg Radio"



Visit the QR code above for more info and troubleshooting.

## HANDS-FREE CALLS

- Status displayed
- Press
- "📞" to answer call
- "📞" to end or reject call
- "📞" 2x to redial last number



Note: May also use the Bluetooth connected device to disconnect the call.



Example

## Specifications

**DC Input**  
12V-24V DC 5A

**USB-A Output**  
5V/2.1A

**USB-C Output**  
5V/3A 9V/2.22A

**Bluetooth Version**  
V5.2

**Audio Frequency**  
20H~20KHz

**Stand-by Current**  
50mA(Max)

**Bluetooth Working Frequency**  
2.402~2.480GHz

**Bluetooth Effective Distance**  
32ft

**FM Emission Effective Distance**  
6ft

**RF Output**  
1.352dBm

**FM Frequency**  
88.1MHz-107.9MHz

## Legal

### STATEMENT

#### FCC Compliance Statement

This device complies with Part 15 of the FCC Rules. Operation is subject to the following two conditions: (1) this device may not cause harmful interference, and (2) this device must accept any interference received, including interference that may cause undesired operation.

⚠ Warning: Changes or modifications not expressly approved by the party responsible for compliance could void the user's authority to operate the equipment.

This equipment has been tested and found to comply with the limits for a Class B digital device, pursuant to Part 15 of the FCC Rules. These limits are designed to provide reasonable protection against harmful interference in a residential installation. This equipment generates, uses and can radiate radio frequency energy and, if not installed and used in accordance with the instructions, may cause harmful interference to radio communications. However, there is no guarantee that interference will not occur in a particular installation.

If this equipment does cause harmful interference to radio or television reception, which can be determined by turning the equipment off and on, the user is encouraged to try to correct the interference by one or more of the following measures:

- Reorient or relocate the receiving antenna.
- Increase the separation between the equipment and receiver.

## Safety Precautions

### CAUTION

- Connect the equipment into an outlet on a circuit different from that to which the receiver is connected.

- Consult the dealer or an experienced radio/TV technician for help.

### Bluetooth Trademark Statement

The Bluetooth® word mark and logos are registered trademarks owned by Bluetooth SIG, Inc. and any use of such marks by Walmart Inc. is under license. Other trademarks and trade names are those of their respective owners.

## Warranty

### 1 YEAR LIMITED WARRANTY COVERING DEFECTIVE PARTS

The Warranty Period lasts for 1 year (365 days) from the date you purchased the Product. Your purchase date is printed on the receipt you received with the Product.

This limited warranty applies only to hardware components of the Device that are not subject to accident, misuse, neglect, fire or damage from other external causes, alteration, repair, or commercial use.

## Troubleshooting

### CAUTION

**Do not disassemble**

**Warning Spray**  
No harsh cleaning chemicals. Clean with dry soft cloth.

**Keep Dry**

**Warning Flammable**

### WARNING

Important: Use "Voice commands" when possible while driving.

### WARNING

⚠ WARNING: Cancer and Reproductive Harm - www.P65Warnings.ca.gov

### Issue

### Problem

### Prevention/Solution

**Poor sound quality**

The selected FM station is the same as a broadcast FM station

Change to another FM station

**No audio transmitted**

Incorrect FM station selected

Adjust the device FM station to match the vehicle FM station

**The car stereo is very noisy in radio mode**

High volume level selected on the car stereo

Turn up the volume of Bluetooth connected device and turn down the volume of the car stereo to reduce noise