

使用说明书 **User's Manual**

VCW-511 磁吸无线充手机支架 **Magnetic Wireless Charger**

感谢您选择 VCW-511 磁吸无线充手机支架，本产品为汽车专用磁吸无线充手机支架，采用高性能专业级的无线充芯片。本产品可固定在汽车出风口上，搭配一个车充与充电线使用，可固定手机的同时为支持 ipone12/13 系列无线充的手机进行无线充电。

Thank you for choosing VCW-511 Magnetic Wireless Charger. This product is designed and built specifically for cars. It can be fixed on the air vent of the car with a hook and hold your phone securely. In the meantime, it adopts high-performance wireless charging chip and strong magnet to provide wireless charging for iPhone 12/13 series mobile phones with built-in magnets.

安全指南：

1. 请勿摔落、刺穿或拆卸本产品；
2. 本产品不防水，请勿暴露在雨淋、水溅的环境中；
3. 避免长时间暴露在阳光直射下，以免造成伤害；
4. 请勿将本产品置于明火中可能会引起爆炸；
5. 使用干净的软布清洗，不能使用任何腐蚀性的清洁剂清洗；
6. 注意安全驾驶，请勿在驾驶途中操作本产品。

Safety Guide

1. Do not drop, puncture or disassemble this product.
2. This product is not waterproof, please do not expose it to rain or water splashing.
3. For safety, do not prolong exposure to direct sunlight.
4. Do not place this product in an open flame that may cause an explosion.
5. Clean with a clean soft cloth and do not use any corrosive cleaning agent.
6. Drive safely. Do not operate this product while driving.

产品特点：

1. 本产品可与 iPhone12/13 系列的手机内置磁铁配合使用；
2. 磁吸固定手机，单手操作驾驶更加安全；因带手机壳或其他原因磁力弱时，可将隐藏的夹臂旋转 180° 夹紧手机不易掉落。
3. 搭配 18W QC.30 快充车充；
4. 支持最大 15W 快速无线充；（需要手机协议支持）
5. 搭配倒勾式出风口支架，更好的与您的出风口叶片固定。

Features

1. This product is compatible with iPhone 12/13 series phones with built-in magnets.
2. Single-hand operation, auto adsorb iPhone 12/ iPhone 13 series phones; When the phone is used with the phone case or the magnetic force is weak for other reasons, the clamps of the product can be rotated 180 degrees to lock the mobile phone to prevent it from falling.
3. Comes with a 18W quick car charger.
4. Supports up to 15W fast wireless charging(Requires mobile protocol support).
5. Equipped with a hook which is easy to install and remove, fix on the air vent of the car firmly.

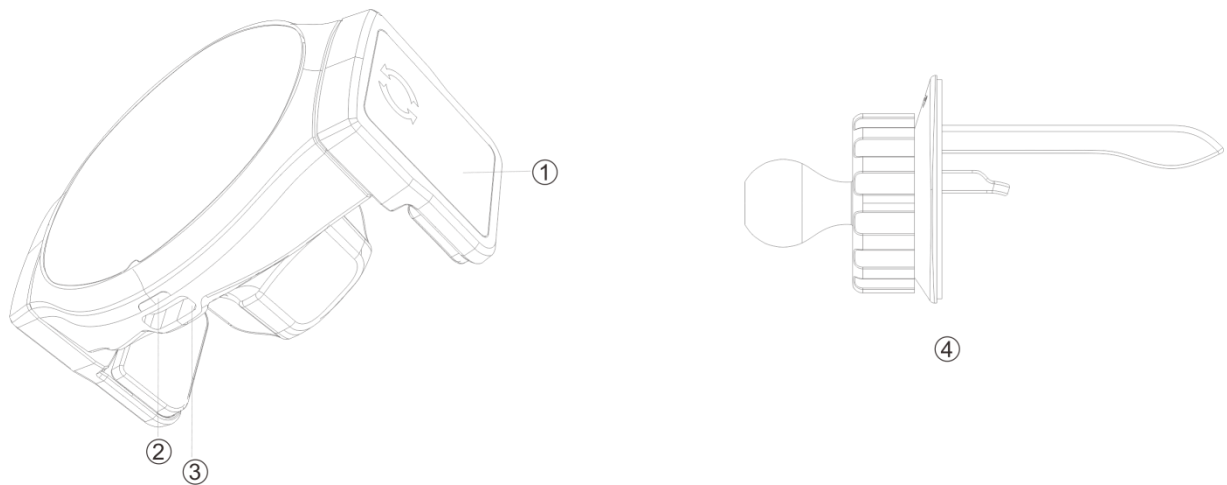
配件清单:

1. 磁吸无线充手机支架*1
2. 出风口支架*1
3. 车充*1
4. Type-C 充电线*1
5. 说明书*1

What is in the Package

1. VCW-511 Magnetic Wireless Charger*1
2. Air Vent Hook*1
3. Quick Car Charger*1
4. Type-C Charging Cable*1
5. User's Manual*1

描述: Descriptions

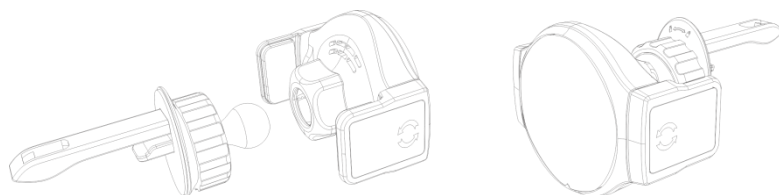


- ① 夹臂 Clamps
- ② 状态指示灯（红蓝 LED 各一颗）LED Indicating Lights (Red & Blue)
- ③ Type-C 充电口 Type-C Charging Port
- ④ 出风口支架 Air Vent Hook

操作说明: Instructions

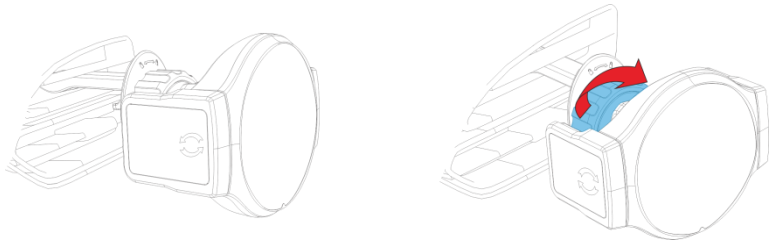
1. 把出风口支架安装到磁吸无线充手机支架上;

Install the hook to the magnetic wireless charger.



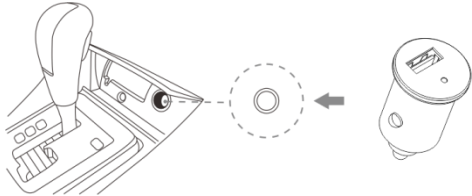
2. 将磁吸无线充手机支架固定在汽车出风口上;

Fix the magnetic wireless charger to the air vent of the car.



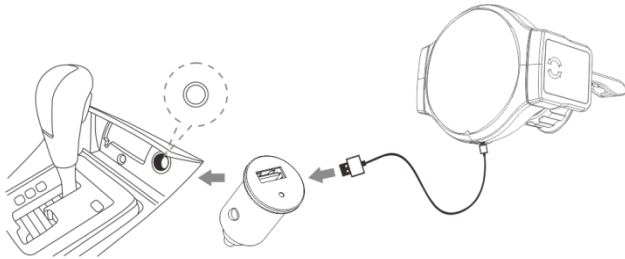
3. 将车充插到汽车点烟孔上;

Insert the car charger into the cigarette lighter socket of the car.



4. 将 USB 充电线 USB 头连接到车充输出端,Type-C 插头端连接到磁吸无线充手机支架插座上;

Connect the charger and VCW-511 Magnetic Wireless Charger with the charging cable(as shown in picture).



5. 通电成功后指示灯红蓝灯交替闪烁二次.

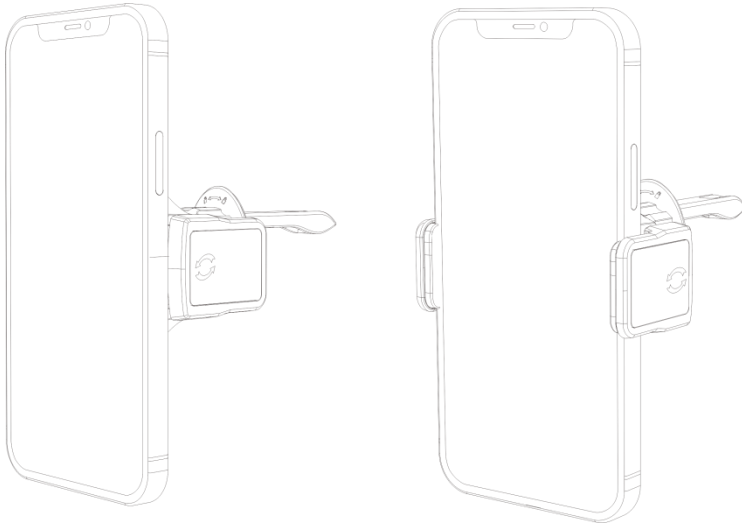
When the power is on, the blue and red indicating light flash in turn twice.

注: 充满转灯功能需无线充电手机支持。

Note: Some phone might not support light changing function when fully charged.

6. 本产品可与 iPhone 手机内置磁铁配合使用, 若因带手机壳或其他原因磁力弱时, 可将隐藏的夹臂旋转 180° 夹紧手机不易掉落。

This product is compatible with iPhone 12/13 series phones with built-in magnets. When the phone is used with the phone case or the magnetic force is weak for other reasons, the clamps of the product can be rotated 180 degrees to lock the mobile phone to prevent it from falling.



无线充电: Wireless Charging

当磁吸无线充手机支架成功装入在汽车上后,您就可以将手机直接放置在磁吸无线充手机支架上并为 iPhone 12/13 手机无线充电,本设备最大支持 15W 无线充电并兼容 10W/7.5W/5W 无线充电。

When the VCW-511 Magnetic Wireless Charger is successfully installed in the car, you can fix your iPhone 12/13 series phones on it for wireless charging. This device supports up to 15W wireless charging and is compatible with 10W/7.5W/5W wireless charging.

指示灯说明

LEDs on wireless charger

<p>通电 Power On</p>	<p>红蓝灯交替闪烁二次, 待机状态不亮灯 When the power is on, the blue and red indicating light flash in turn twice, lights off when standby.</p>
<p>充电 Charging</p>	<p>普通充电蓝灯长亮, 快速充电红灯长亮, 充满红蓝灯长亮注: 充满转灯功能需无线充电手机支持。 The constant blue light indicate normal charging, the constant red light indicate fast charging, steady red and blue lights means fully charged. Note: Some phone might not support light changing function when fully charged.</p>
<p>FOD 检测 FOD Testing</p>	<p>异物检测或感应范围出错, 红蓝灯交替闪烁, 自动停止充电功能, 解除异物或放正位置后方可进入充电状态。</p>

	The red and blue lights flash in turn and The device stops charging when foreign object detection or sensing an error of the phone placement. Release the foreign object or align the phone to continue charging.
过压 Overvoltage	红蓝灯闪烁 Red and blue lights flash
欠压 Undervoltage	红蓝灯闪烁 Red and blue lights flash
发射过热 Overheating	红灯闪烁 Red light flash

规格: Specifications

输入电压: DC 5V- 2A 9V-2A **Wireless Charger Input: DC 5V-2A 9V-2A**

无线充输出: 5W/7.5W/10W/15W **Baseline Power Profile: 15W Max**

充电口: **Type-C Charging Port: Type-C**

待机功耗:<0.5W **Standby Power Consumption: <0.5W**

注:本产品支持 **iphone12/13** 内置磁铁手机型号, 其他手机可能会出现无线充电效率低或者不充电的情况。

Note: This product is specially designed for iphone 12/13 series phones with built-in magnets. Other mobile phones that support wireless charging may experience inefficient wireless charging or unable to charge with this product.

NOTE: This equipment has been tested and found to comply with the limits for a Class B digital device, pursuant to part 15 of the FCC Rules. These limits are designed to provide reasonable protection against harmful interference in a residential installation. This equipment generates uses and can radiate radio frequency energy and, if not installed and used in accordance with the instructions, may cause harmful interference to radio communications. However, there is no guarantee that interference will not occur in a particular installation. If this equipment does cause harmful interference to radio or television reception, which can be determined by turning the equipment off and on, the user is encouraged to try to correct the interference by one or more of the following measures:

- Reorient or relocate the receiving antenna.
- Increase the separation between the equipment and receiver.
- Connect the equipment into an outlet on a circuit different from that to which the receiver is connected.
- Consult the dealer or an experienced radio/TV technician for help.

Changes or modifications not expressly approved by the party responsible for compliance could void the user's authority to operate the equipment.

This device complies with Part 15 of the FCC Rules. Operation is subject to the following two

conditions:

(1) this device may not cause harmful interference, and (2) this device must accept any interference received, including interference that may cause undesired operation.

RF Exposure Warning Statements:

This equipment complies with FCC radiation exposure limits set forth for an uncontrolled environment.

This equipment shall be installed and operated with minimum distance 20cm between the radiator & body.