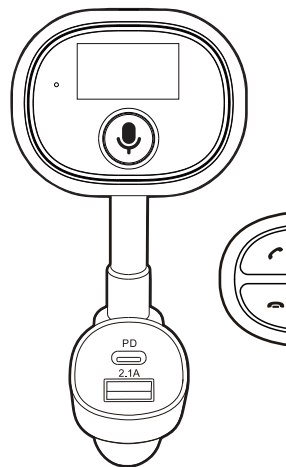




USER GUIDE

Bluetooth FM Transmitter Voice Assistant



Model #100130570_EN_03/29/2023

Contents & Information

CONTENTS & INFORMATION

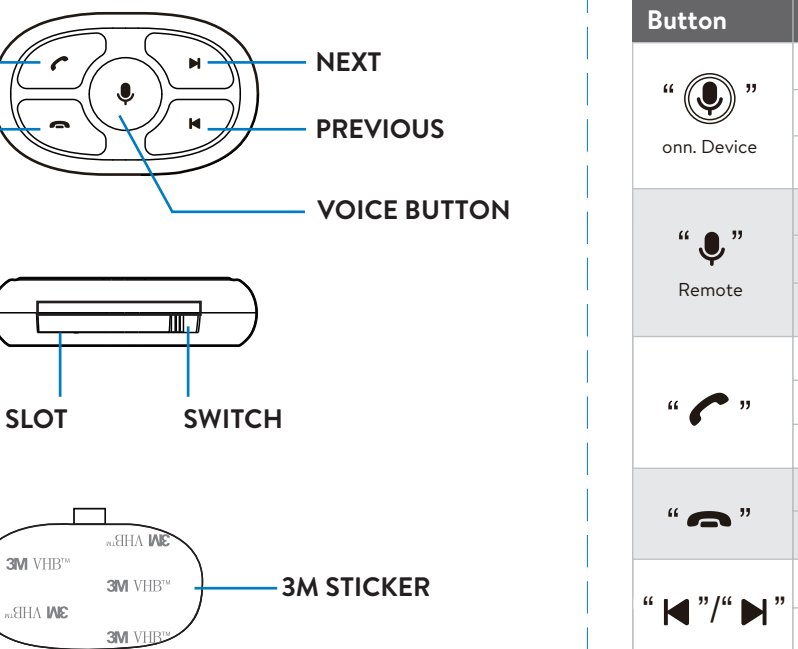
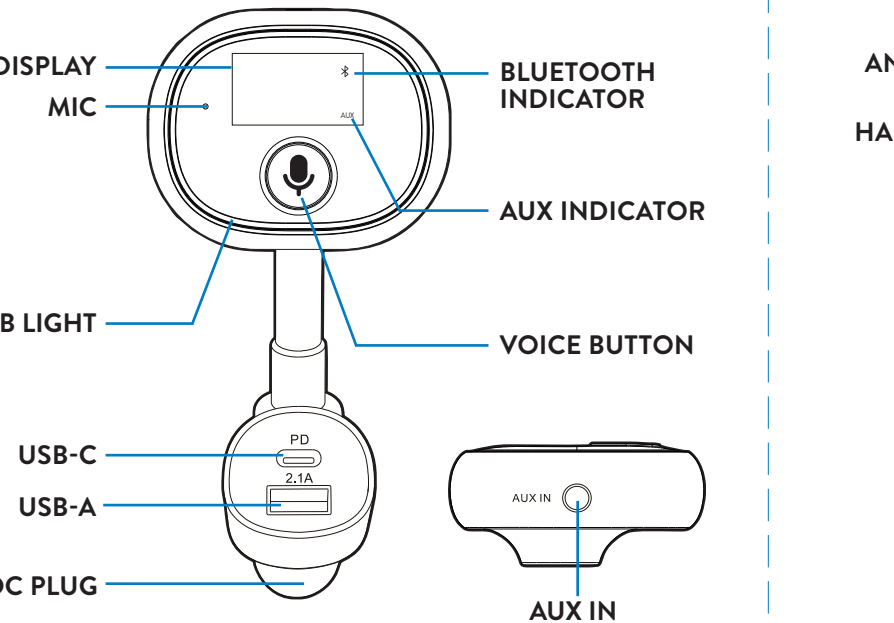
- Features
- OVERVIEW
- CONTROLS
- OPERATION
 - Setup
 - Select Source (Bluetooth, Aux input)
 - Voice Assistant
 - Hands-free Calls

- SPECIFICATIONS
- LEGAL
- WARRANTY
- SAFETY PRECAUTIONS
- TROUBLESHOOTING

Overview

Features

- Push voice button to wake up voice assistant (Smart Device)
 - Native Voice App
- Hands-free calling with built-in microphone
- Bluetooth connection to mobile device (A2DP)
- 8 RGB light modes
 - Red / green / blue light always on
 - Red / green / blue breathing light
 - Turn off / all color cycles
- 30W charging (USB-C and USB-A)
- Remote Control



Controls

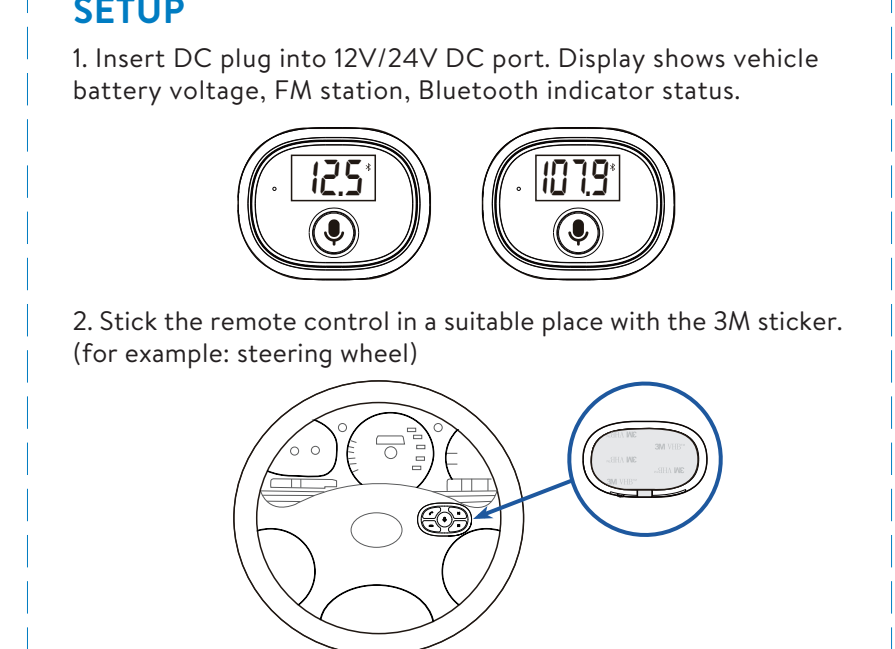
Button

| Button | Action | Behaviors |
|---------------|---------------------|--------------------------------|
| "onn. Device" | Press | Wake Up Voice Assistant |
| | Press Twice | Switch RGB Light Mode |
| | Press for 5 Seconds | Clear Bluetooth Connection |
| "Remote" | Press | Wake Up Voice Assistant |
| | Press | Private Call / Hands-free Call |
| | Press for 5 Seconds | Clear Bluetooth Connection |
| "Phone" | Press | Pause / Play |
| | Press Twice | Call Back |
| "Phone" | Press | Answer Call |
| | Press Twice | Call Back |
| "Phone" | Press | End / Reject Call |
| | Press for 2 Seconds | Switch to Bluetooth/AUX |
| "Left/Right" | Press | ◀ Back ▶ Next |
| | Press for 2 Seconds | Enter FM Station Setting |

Operation

SETUP

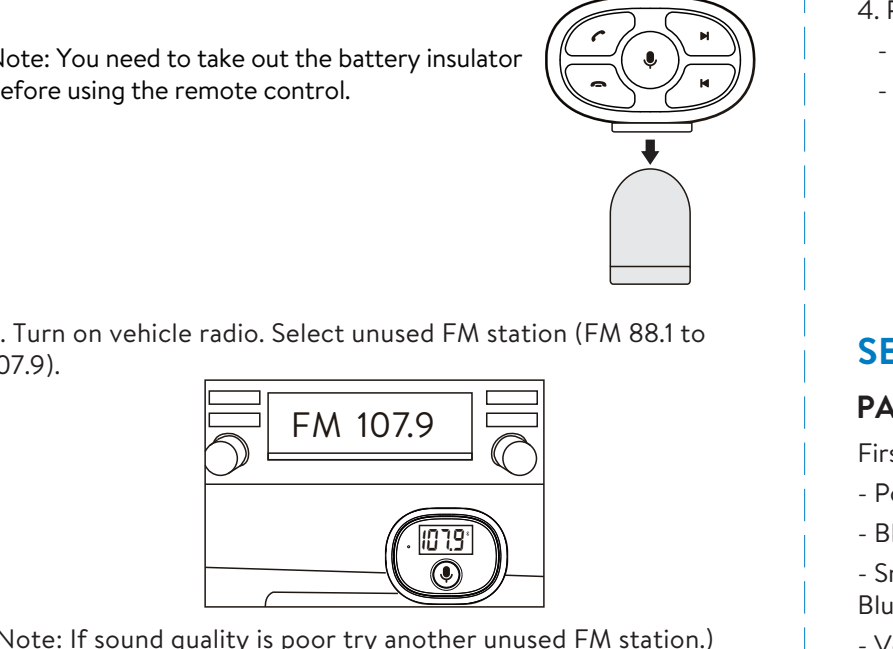
1. Insert DC plug into 12V/24V DC port. Display shows vehicle battery voltage, FM station, Bluetooth indicator status.
2. Stick the remote control in a suitable place with the 3M sticker. (for example: steering wheel)



Operation

SELECT SOURCE (BLUETOOTH, AUX INPUT)

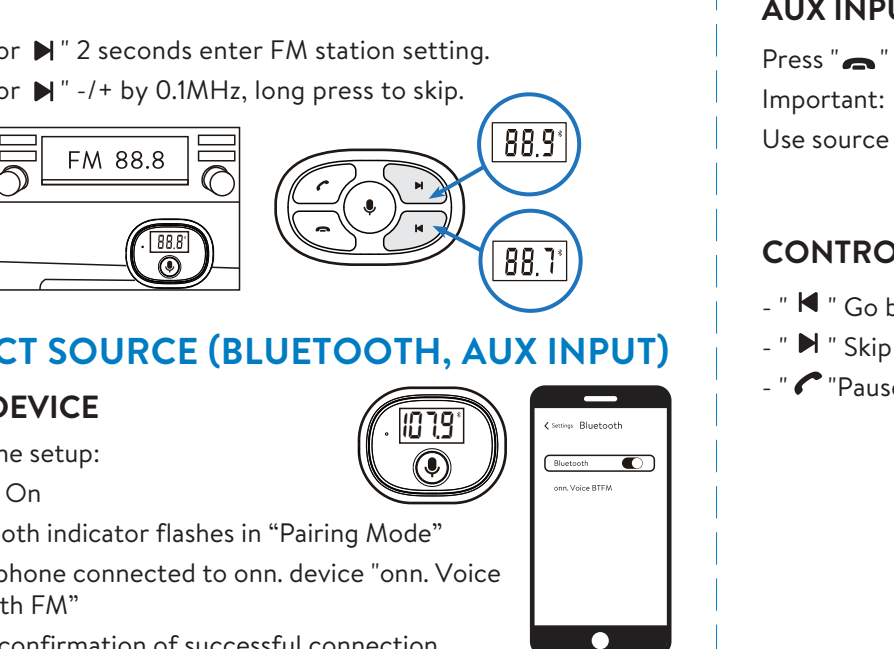
3. Turn on vehicle radio. Select unused FM station (FM 88.1 to 107.9).
4. Press
 - "◀ or ▶" 2 seconds enter FM station setting.
 - "◀ or ▶" -/+ by 0.1MHz, long press to skip.



Operation

PAIR DEVICE

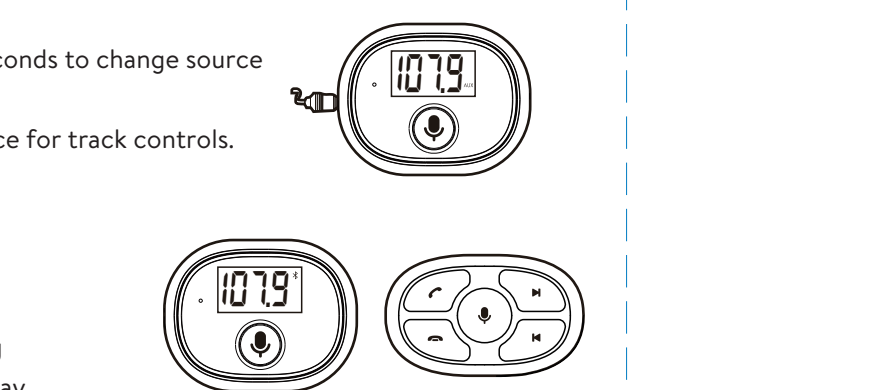
- First-time setup:
- Power On
 - Bluetooth indicator flashes in "Pairing Mode"
 - Smartphone connected to onn. device "onn. Voice Bluetooth FM"
 - Voice confirmation of successful connection



Operation

AUX INPUT

- Press "Phone" 2 seconds to change source
- Important:
Use source device for track controls.



CONTROLS

- "◀" Go back
- "▶" Skip song
- "Phone" "Pause / Play"

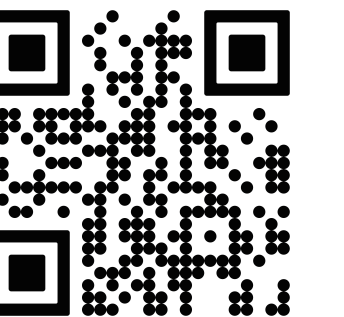


HAVING TROUBLE? WE CAN HELP **SAVE THIS USER GUIDE**
1-888-516-2630
 7 DAYS/WEEK 7:00am- 9:00pm CST
 Read entire user guide before installation and use

Made in Vietnam

VOICE ASSISTANTS

DOWNLOAD AND SET UP THE NATIVE VOICE APP



Use the QR Code provided to download and setup Native Voice on your smartphone and add Voice Assistants to your ONN device. Works for both iOS and Android.

CONNECT NATIVE VOICE APP WITH ONN. DEVICE

Follow instructions to connect your onn. device to the Native Voice App.
NOTE: Voice Assistants available over Bluetooth, not AUX.



ENABLE ONE OR MORE VOICE ASSISTANTS

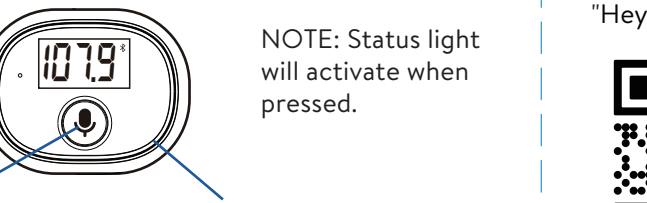
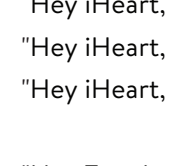
Toggle on Voice Assistants including your smartphone assistant like Siri or Google Assistant.

NOTE: No additional app downloads required.



TRY A VOICE ASSISTANT

- Press "🎤" on your onn. device
- Hear a tone
- Say "Hey iHeart, play Taylor Swift".
- Wait for response

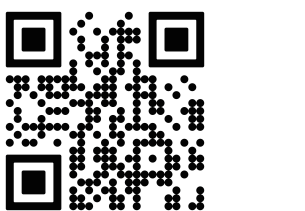


VOICE BUTTON STATUS LIGHT

NOTE: Status light will activate when pressed.

EXAMPLE VOICE COMMANDS

- "Hey iHeart, play z100"
- "Hey iHeart, play Harry Styles"
- "Hey iHeart, play Country music"
- "Hey Tuneln, play WDRV"
- "Hey Tuneln, listen to the Yankees game"
- "Hey Tuneln, turn on Bloomberg Radio"



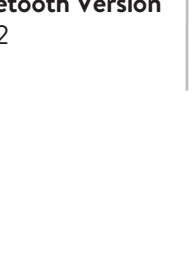
Visit the QR code above for more info and troubleshooting.

HANDS-FREE CALLS

- Status displayed
- Press
- "📞" to answer call
- "📞" to end or reject call
- "📞" 2x to redial last number



Note: May also use the Bluetooth connected device to disconnect the call.



Example

Specifications

DC Input
12V-24V DC 5A

USB-A Output
5V/2.1A

USB-C Output
5V/3A 9V/2.22A

Bluetooth Version
V5.2

Audio Frequency
20H~20KHz

Stand-by Current
50mA(Max)

Bluetooth Working Frequency
2.402~2.480GHz

Bluetooth Effective Distance
32ft

FM Emission Effective Distance
6ft

RF Output
1.352dBm

FM Frequency
88.1MHz-107.9MHz

Legal

STATEMENT

FCC Compliance Statement

This device complies with Part 15 of the FCC Rules. Operation is subject to the following two conditions: (1) this device may not cause harmful interference, and (2) this device must accept any interference received, including interference that may cause undesired operation.

⚠ Warning: Changes or modifications not expressly approved by the party responsible for compliance could void the user's authority to operate the equipment.

This equipment has been tested and found to comply with the limits for a Class B digital device, pursuant to Part 15 of the FCC Rules. These limits are designed to provide reasonable protection against harmful interference in a residential installation. This equipment generates, uses and can radiate radio frequency energy and, if not installed and used in accordance with the instructions, may cause harmful interference to radio communications. However, there is no guarantee that interference will not occur in a particular installation.

If this equipment does cause harmful interference to radio or television reception, which can be determined by turning the equipment off and on, the user is encouraged to try to correct the interference by one or more of the following measures:

- Reorient or relocate the receiving antenna.
- Increase the separation between the equipment and receiver.

Safety Precautions

CAUTION

- Connect the equipment into an outlet on a circuit different from that to which the receiver is connected.

- Consult the dealer or an experienced radio/TV technician for help.

Bluetooth Trademark Statement

The Bluetooth® word mark and logos are registered trademarks owned by Bluetooth SIG, Inc. and any use of such marks by Walmart Inc. is under license. Other trademarks and trade names are those of their respective owners.

Warranty

1 YEAR LIMITED WARRANTY COVERING DEFECTIVE PARTS

The Warranty Period lasts for 1 year (365 days) from the date you purchased the Product. Your purchase date is printed on the receipt you received with the Product.

This limited warranty applies only to hardware components of the Device that are not subject to accident, misuse, neglect, fire or damage from other external causes, alteration, repair, or commercial use.

Troubleshooting

Do not disassemble



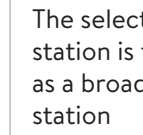
Warning Spray



Keep Dry



Warning Flammable



WARNING

Important: Use "Voice commands" when possible while driving.

⚠ WARNING: Cancer and Reproductive Harm - www.P65Warnings.ca.gov

Issue

Problem

Prevention/Solution

Poor sound quality

The selected FM station is the same as a broadcast FM station

Change to another FM station

No audio transmitted

Incorrect FM station selected

Adjust the device FM station to match the vehicle FM station

The car stereo is very noisy in radio mode

High volume level selected on the car stereo

Turn up the volume of Bluetooth connected device and turn down the volume of the car stereo to reduce noise