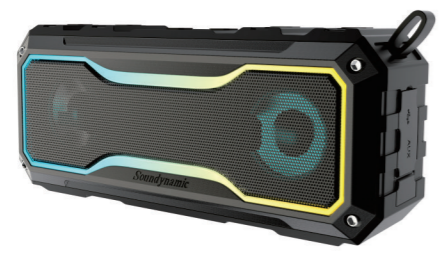


BLUETOOTH SPEAKER WITH PULSING LIGHT



USER'S MANUAL
MODEL: Twinkle
VERSION: V-01

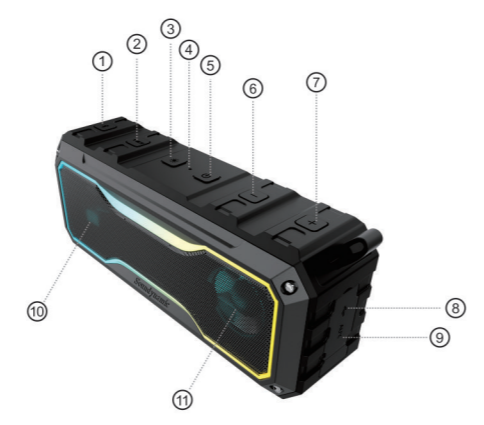
1

Introduction: >>>

Thank you for choosing Twinkle Bluetooth speaker. This product supports smartphones, tablets, laptops and other Bluetooth enabled devices.

This product is tested to be IPX7 waterproof and dust-proof. It can work under 0.15-1 meter underwater for 30 minutes, and it is not affected by water splashes or rain in a limited time.

Please note the Bluetooth speaker is not waterproof when the silicone cover is opened. Please ensure that the silicone cover is closed under wet and splashing conditions.



2



Description: >>>

- ① Bluetooth Button
- ② TWS Button
- ③ Light Mode Button
- ④ LED Indicating Light
- ⑤ Power ON/OFF Button
- ⑥ Volume Down-/ Previous Track Button
- ⑦ Volume UP+/ Next Track Button
- ⑧ Type-C Charging Port
- ⑨ AUX IN Port
- ⑩ Left Channel Speaker
- ⑪ Right Channel Speaker
- ⑫ VH-D007M Bike Mount
- ⑬ Type-C Charging Cable
- ⑭ 3.5mm AUX IN Cable

3

Specification: >>>

Bluetooth Version: 5.0
Bluetooth Receiving Range: 10M
Product Size: 197*83*60mm
Battery Capacity: 7.4V/2500mAh
Input: 5V/2A
Speaker Power: 2*8W

Bluetooth: >>>

Pair: The device name Twinkle will be displayed when it is searched and connected for the first time. After the speaker is turned on, it will automatically search for the last connected device. When the Bluetooth is connected, you will be prompted. Or it will enter pairing mode when the last connected device is not found in 10 seconds. The blue LED light flashes quickly in the disconnected state, and the speaker will automatically turn off when the Bluetooth is not connected for 10 minutes;

Note: After hearing the connection prompt, you can press the TWS button for TWS function.

Reconnect: when the connection distance is exceeded, the speaker will reconnect automatically when back in the connection distance within 10 mins, and automatically turn off after 10 minutes.

Disconnect: when connected, long press Bluetooth button to clear the paired Bluetooth, you will be prompted with "disconnected", then the speaker will start to research devices.

4

Button: >>>

Power ON/OFF Button: Long press to turn on the speaker and you will hear the prompt to enter Bluetooth pairing state. When playing the music, press the power button to pause/play the music. When incoming calls, press the button to answer the call; press again to hang up. Double-press the power button to call back the last call.

"+": Press volume "+" button to turn up the volume, long press to switch to the next track.

"-": Press volume "-" button to turn down the volume, long press to switch to the next track.

Bluetooth Button: when connected, long press Bluetooth button to clear the paired Bluetooth and re-enter the pairing state after hearing the prompt; Press the Bluetooth button for the current battery notice.

Light Mode Button: Press the light button to switch to the light mode. The following light modes will be played in order according to how many times you press the light button: rainbow horse racing light / cross horse racing light / colorful flashing light / colorful horse racing light; To turn off the lighting effect, long press the light mode button.

TWS: After the Bluetooth is connected, press the TWS button to turn on the TWS interconnection function to connect with the same other product. When two identical Bluetooth products are interconnected, stereo music will be played at the same time, one is L channel, the other is R channel;

5

Note: The other speaker that is to be connected with TWS can only be paired when its Bluetooth is not connected.

AUX: Connect the speaker with 3.5mm AUX IN cable, the mode will be automatically switched to AUX. You can only adjust the volume and turn the speaker on/off under AUX mode.

Charging: >>>

Support Type-C 5V/1A charging, the charging time is 2.5H, the red light in the charging state is long on, and the red light is off when it is fully charged. You will be prompted when battery is low to 20%, please charge your speaker when you hear the low battery prompt.

LED Indicating Light: >>>

Flashing Blue Light: Pairing
Long on Red Light: Charging
Lights off: power off / fully charged/standby mode

Bike Mount: >>>



6



(3) Tighten the second nut of the VH-D007M bike mount clockwise as shown in the picture, and successfully install the VH-D007M bike mount on the bicycle bar.



(4) Installation complete.

NOTE: This equipment has been tested and found to comply with the limits for a Class B digital device, pursuant to part 15 of the FCC Rules. These limits are designed to provide reasonable protection against harmful interference in a residential installation. This equipment generates uses and can radiate radio frequency energy and, if not installed and used in accordance with the instructions, may cause harmful interference to radio communications. However, there is no guarantee that interference will not occur in a particular installation. If this equipment does cause harmful interference to radio or television reception, which can be determined by turning the equipment off and on, the user is encouraged to try to correct the interference by one or more of the following measures:

- Reorient or relocate the receiving antenna.
- Increase the separation between the equipment and receiver.

7

- Connect the equipment into an outlet on a circuit different from that to which the receiver is connected.
- Consult the dealer or an experienced radio/TV technician for help

Changes or modifications not expressly approved by the party responsible for compliance could void the user's authority to operate the equipment.

This device complies with Part 15 of the FCC Rules. Operation is subject to the following two conditions:

- (1) this device may not cause harmful interference, and
- (2) this device must accept any interference received, including interference that may cause undesired operation.

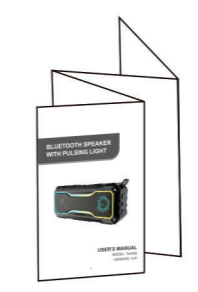
What's in the Box: >>>

- 1) Speaker
- 2) Type-C Charging Cable
- 3) 3.5mm AUX IN Cable
- 4) VH-D007M Bike Mount
- 5) User's Manual

8

型号: VB-2004
材质: 105g双铜纸
工艺: 四色双面印刷

成品尺寸: 80*120MM
展开尺寸: 320*120MM (不含出血位)
折页方法: 风琴折



折叠效果

2021-06-21