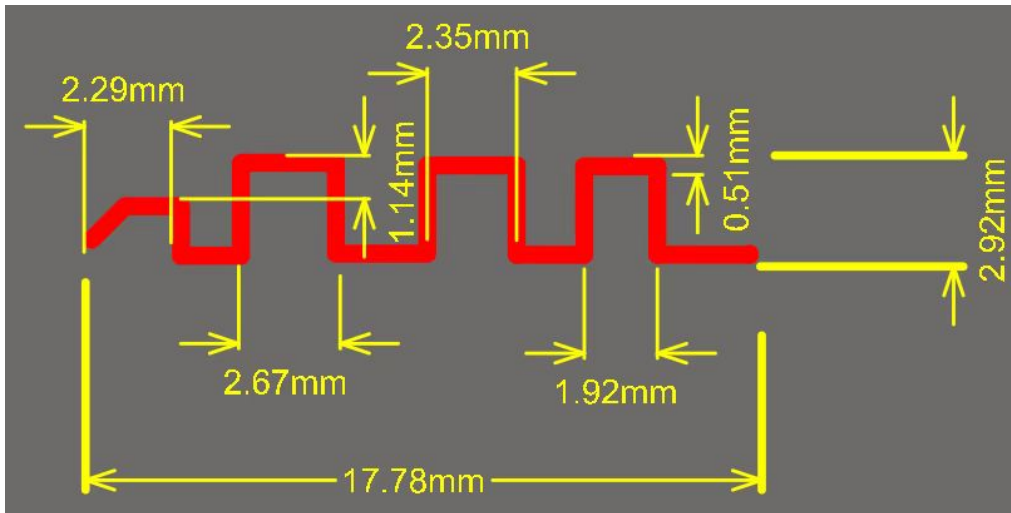


Antenna describe

1. Antenna describe:

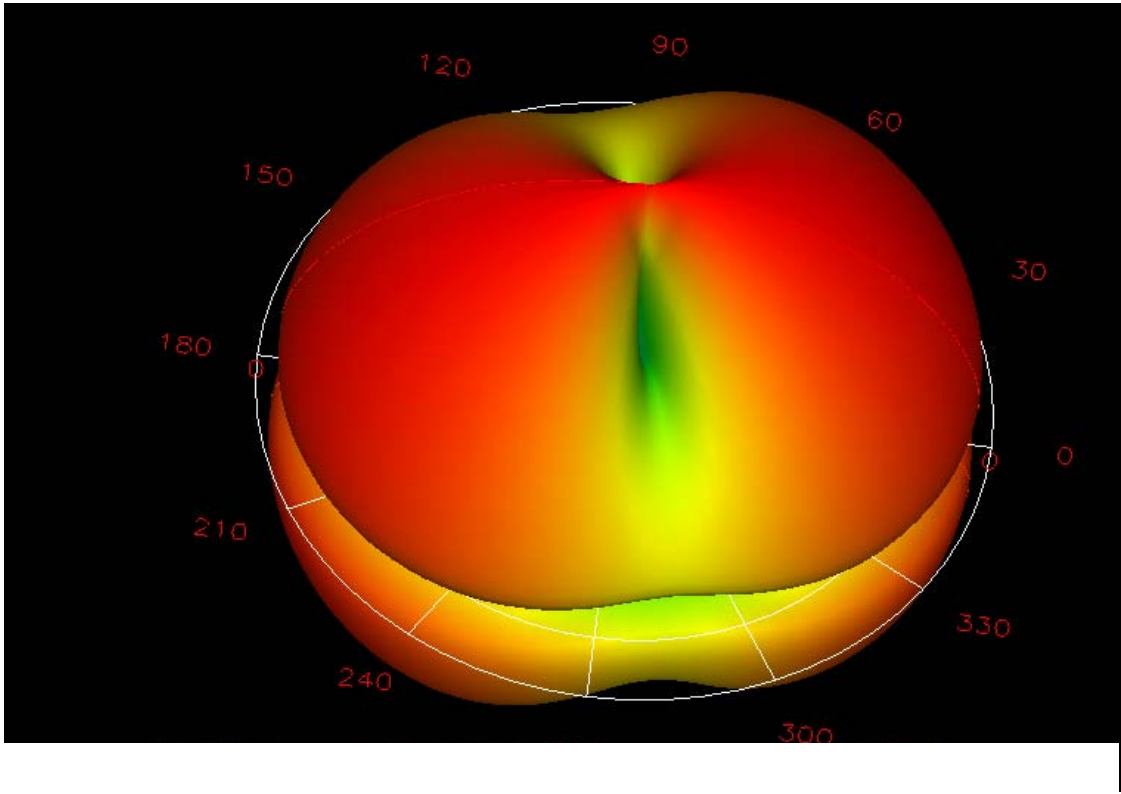
Antenna gain	0dBi
Frequency range	2.402GHZ-2.480GHZ
Antenna type	PCB



2. Antenna Radiation Pattern

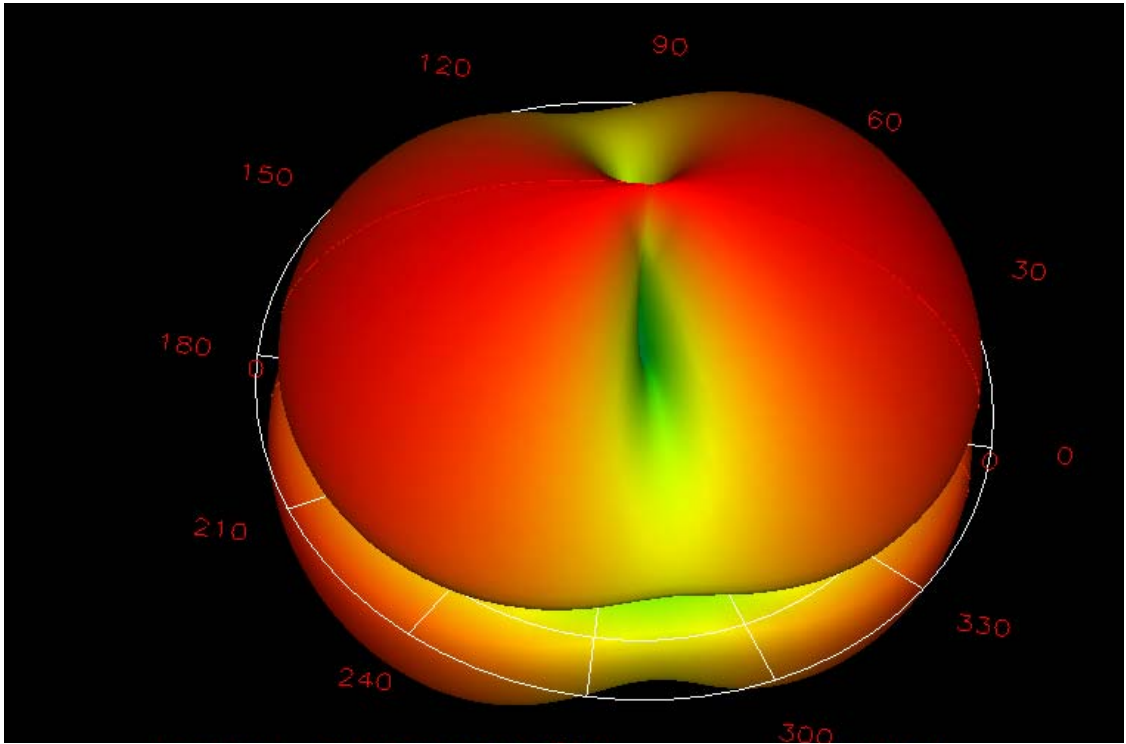
Radiation pattern@2.402GHZ

Phi	0	45	90	135	180	235	270	315
Gain	-0.79	-0.78	-0.8	-0.81	-0.9	-0.56	-0.8	-0.78



Radiation pattern@2.441GHZ

Phi	0	45	90	135	180	235	270	315
Gain	-0.81	-0.78	-0.83	-0.81	-0.91	0	-0.8	-0.82



Radiation pattern@2.480GHZ

Phi	0	45	90	135	180	235	270	315
Gain	-0.79	-0.81	-0.83	-0.81	-0.9	-0.36	-0.9	-0.82

