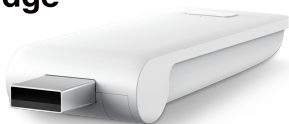




Quick Start Guide for Connector Mini Bridge

Product
Certification



Mini Bridge allows user to link their motorized shutters, blinds, and curtains into Wi-Fi network, enabling control via smart APP and interaction with other IoT products.

Step 1 Download APP

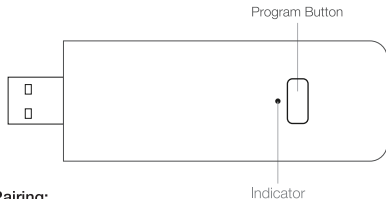
Please scan below QR code.



Step 2

Please scan below QR code to learn more about link up Mini Bridge with home Wi-Fi router, setup Connector APP, and establish connection with other IoT applications.



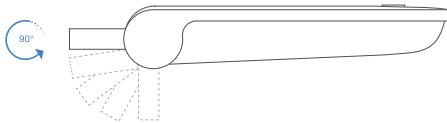


Program / Pairing:

Press and hold program button for about 2 seconds, then release until the LED blinks purple.

Reset:

Press and hold program button for about 10 seconds, then release until the LED blinks red.



Product Parameter

Indoor use only

Wi-Fi: 2.4GHz (802.11b/g/n)

Power Input:

DC 5V/1A (USB Type-A)

Radio frequency: 433.92MHz

Working temperature: 0°C ~ 40 °C

Dimension(mm): L83.8 * W30.7 * H13.9

Status Indicator

Color	Meaning	Duration
Constant Blue	Working fine	Constant
Slow Flashing Red	Wi-Fi is disconnected	Continuously till status change
Slow Flashing Yellow	Wi-Fi is connected	Continuously till status change
Quick Flashing Red	Bridge reset	5 times
Slow Flashing Purple	Pairing underway	Continuously till status change
Slow Flashing Green	Upgrade in progress	Continuously till status change

Caution

This device complies with Part 15 of the FCC Rules. Operation is subject to the following two conditions:

(1) This device may not cause harmful interference, and (2) this device must accept any interference received, including interference that may cause undesired operation.

This equipment has been tested and found to comply with the limits for a Class B digital device, pursuant to part 15 of the FCC Rules. These limits are designed to provide reasonable protection against harmful interference in a residential installation. This equipment generates uses and can radiate radio frequency energy and, if not installed and used in accordance with the instructions, may cause harmful interference to radio communications.

However, there is no guarantee that interference will not occur in a particular installation. If this equipment does cause harmful interference to radio or television reception, which can be determined by turning the equipment off and on, the user is encouraged to try to correct the interference by one or more of the following measures:

- Reorient or relocate the receiving antenna.
- Increase the separation between the equipment and receiver.
- Connect the equipment into an outlet on a circuit different from that to which the receiver is connected.
- Consult the dealer or an experienced radio/TV technician for help.

Any changes or modifications to this unit not expressly approved by the party responsible for compliance could void the user's authority to operate the equipment.

This equipment complies with FCC radiation exposure limits set forth for an uncontrolled environment. This equipment should be installed and operated with minimum distance 20cm between the radiator & your body.