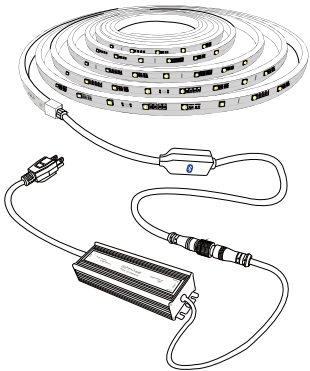




Durable • Waterproof • Innovation

User Manual



**WATERPROOF RGBW
LED STRIP LIGHT**

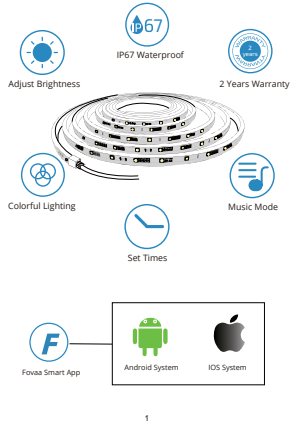
Packing list

LED Strip Light	1 Roll
Adapter	1 pcs
Mounting Clips	20 pcs
Screws	40 pcs
User Manual	1 pcs

Specifications

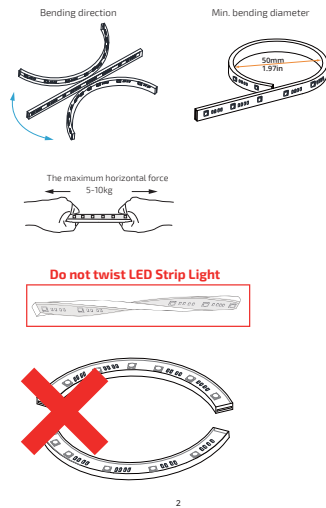
Length	5m
Color	RGBW
Controlling method	App
Powering method	12VDC

Product Features

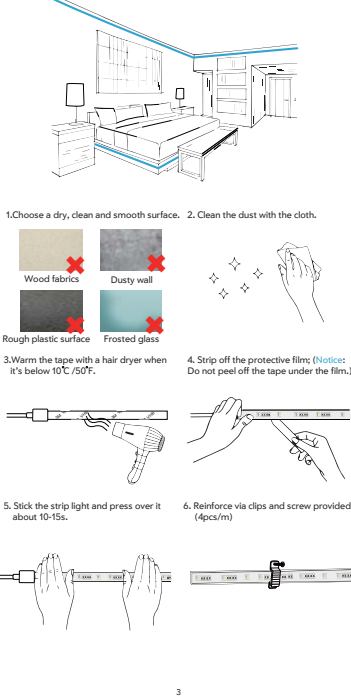


Attention

- Please follow the instruction to connect properly, prevent damage to the Product.
- Do not disassemble or cut it casually, avoid effecting product used and maintenance.
- If a fault occurs please contact with us. Do not attempt to fix this by yourself.
- During installation, violent pulling and bending are prohibited.
- Do not roll out the product on rough surfaces or over sharp corners. This will scratch the PVC and damage the finish of the product.
- Do not cut off the cable wire between connector and adapter.
- Do not secure the product with staples, nails, or alike that might damage the insulation or PVC material.
- Always make sure that the equipment is installed securely and ensure all safety anchors are installed.

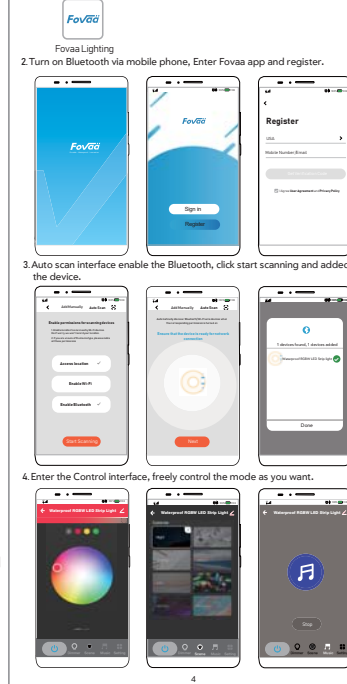


Installation



Remote Controlling Guide

- Download and install the Fovaa APP via mobile phone from app store.



NOTE: This equipment has been tested and found to comply with the limits for a Class B digital device, pursuant to part 15 of the FCC Rules. These limits are designed to provide reasonable protection against harmful interference in a residential installation. This equipment generates uses and can radiate radio frequency energy and, if not installed and used in accordance with the instructions, may cause harmful interference to radio communications. However, there is no guarantee that interference will not occur in a particular installation. If this equipment does cause harmful interference to radio or television reception, which can be determined by turning the equipment off and on, the user is encouraged to try to correct the interference by one or more of the following measures:

- Reorient or relocate the receiving antenna.
- Increase the separation between the equipment and receiver.
- Connect the equipment into an outlet on a circuit different from that to which the receiver is connected.
- Consult the dealer or an experienced radio/TV technician for help.

Changes or modifications not expressly approved by the party responsible for compliance could void the user's authority to operate the equipment. This device complies with Part 15 of the FCC Rules. Operation is subject to the following two conditions:

- (1)This device may not cause harmful interference.
- (2)This device must accept any interference received, including interference that may cause undesired operation.