

Shenzhen Yishengbang Technology Co., Ltd

Shenzhen Yishengbang Technology Co., Ltd Antenna Test Report

Customer: MADIGI

Project: NUCPN01-A

Product: WIFI Antenna

Report date: 2024. 1.30

Prepared by : 范新竹

Checked by : 黄震

Approved by :

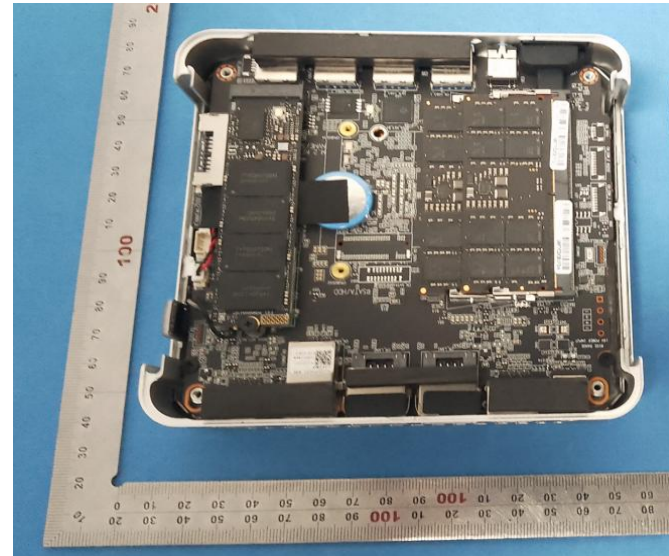
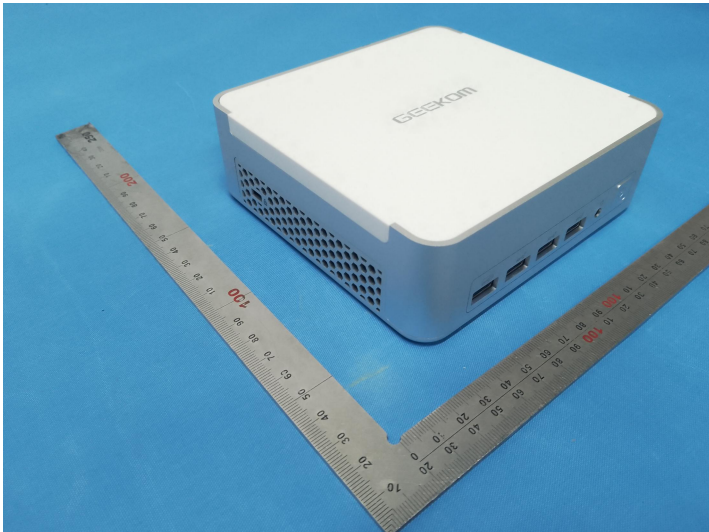
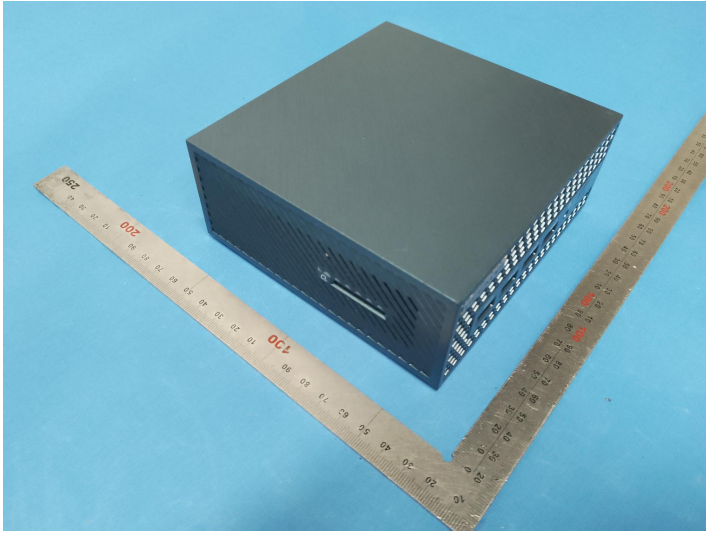
Purpose

This report is to measure the performance of SLK for Master Antenna on MADIGI. All measure data are showed below.

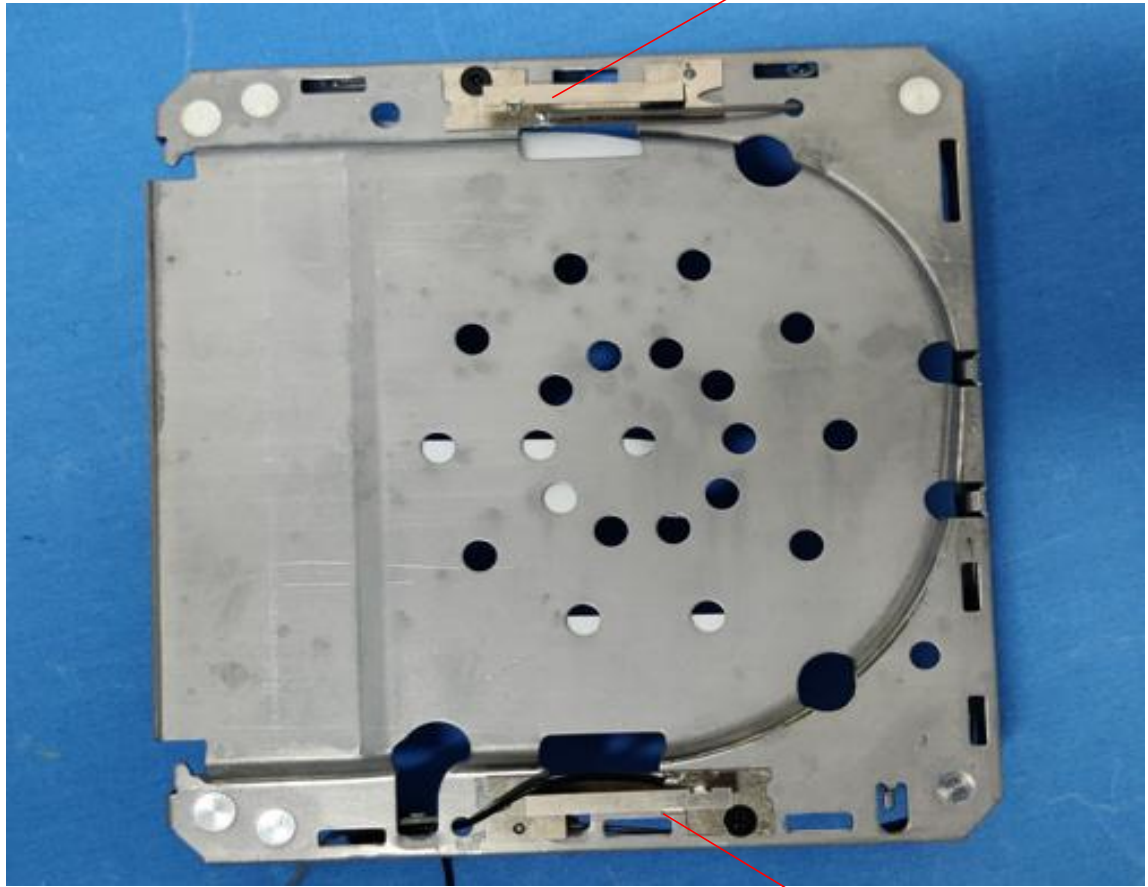
Content

1. Product Overview
2. Test Result
 - 2.1 VSWR/S11
 - 2.2 Antenna Parameters
 - 2.3 WIFI Antenna Gain/Efficiency/3D DATA
 - 2.4 WIFI Antenna Throughput
 - 2.5 BT Throughput
3. Conclusions

a 1. Product Overview



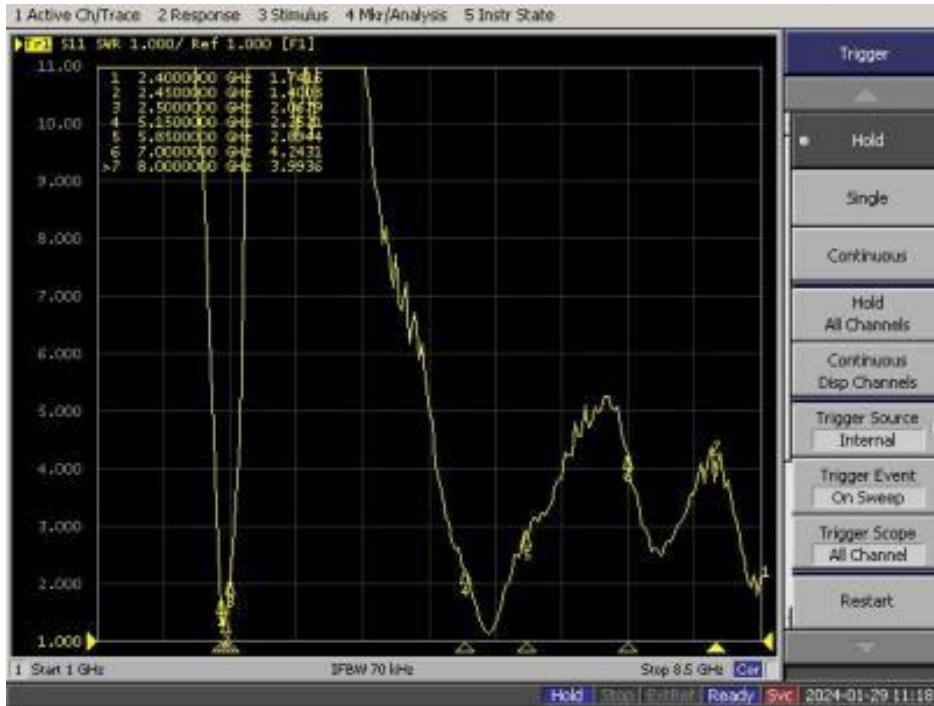
a 1. Product Overview



2. Test Result

2.1 VSWR/S11

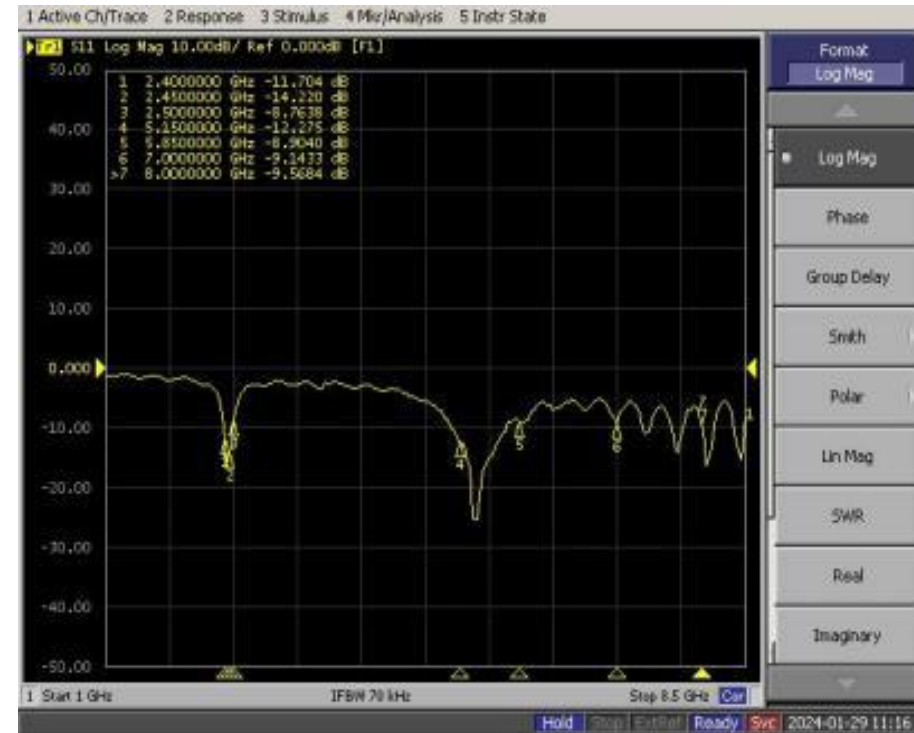
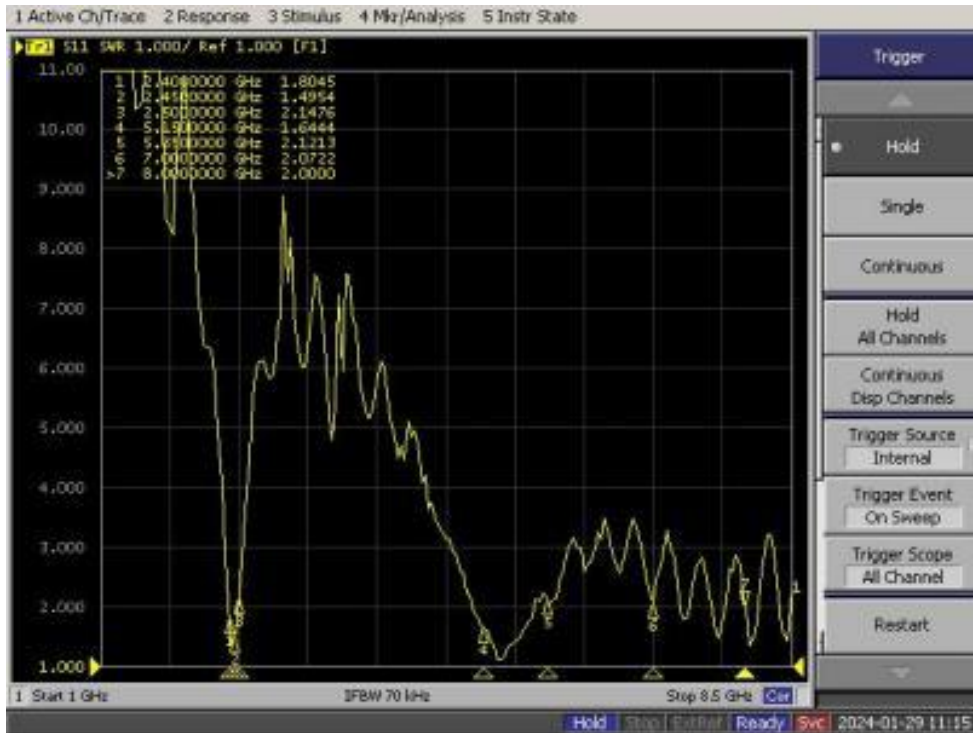
MAIN



2. Test Result

2.1 VSWR/S11

AUX



2. Test Result

2.2 Antenna Parameters

MAIN



AUX

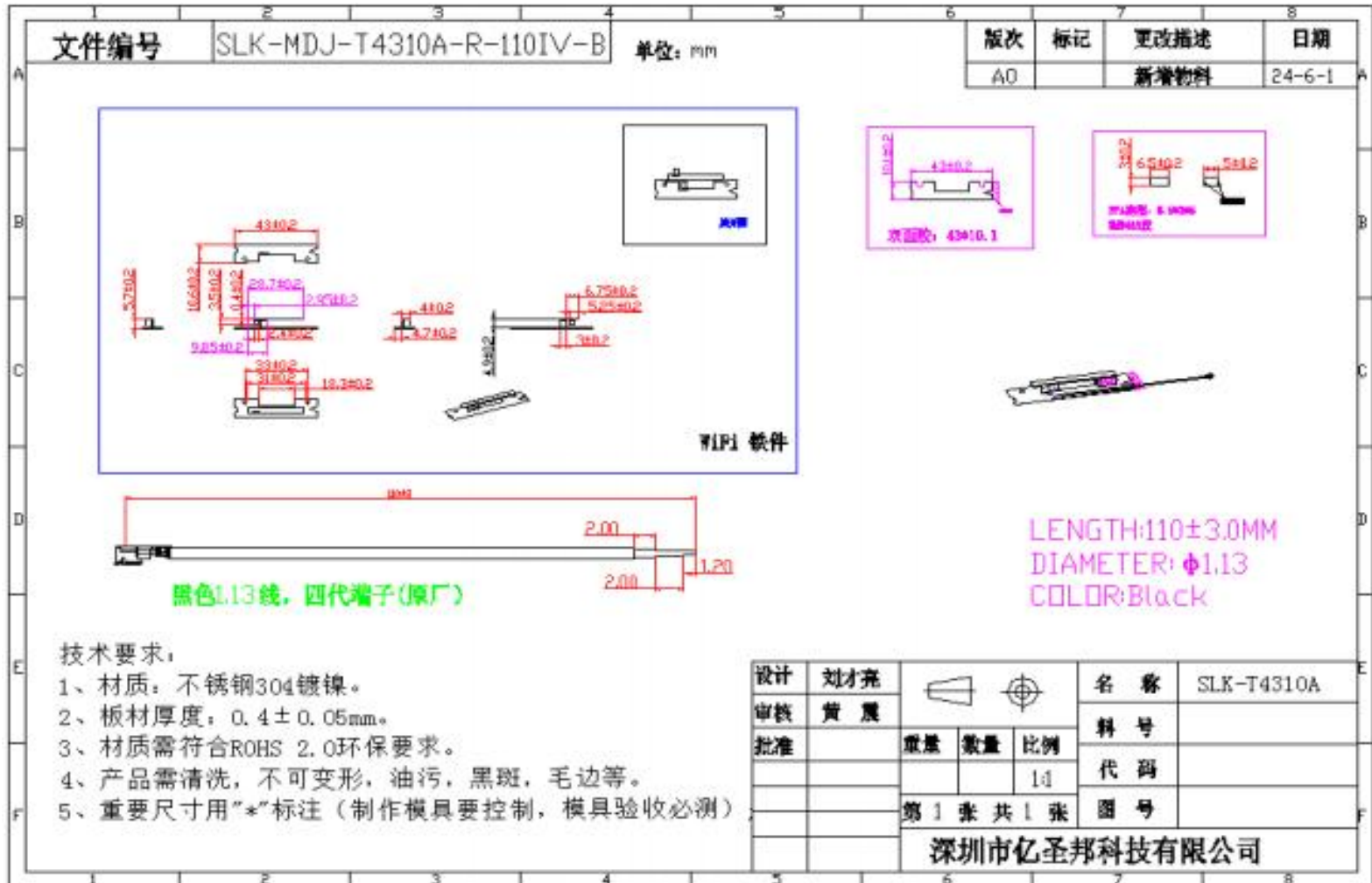


Note:Antenna type: PIFA

2. Test Result

2.2 Antenna Parameters

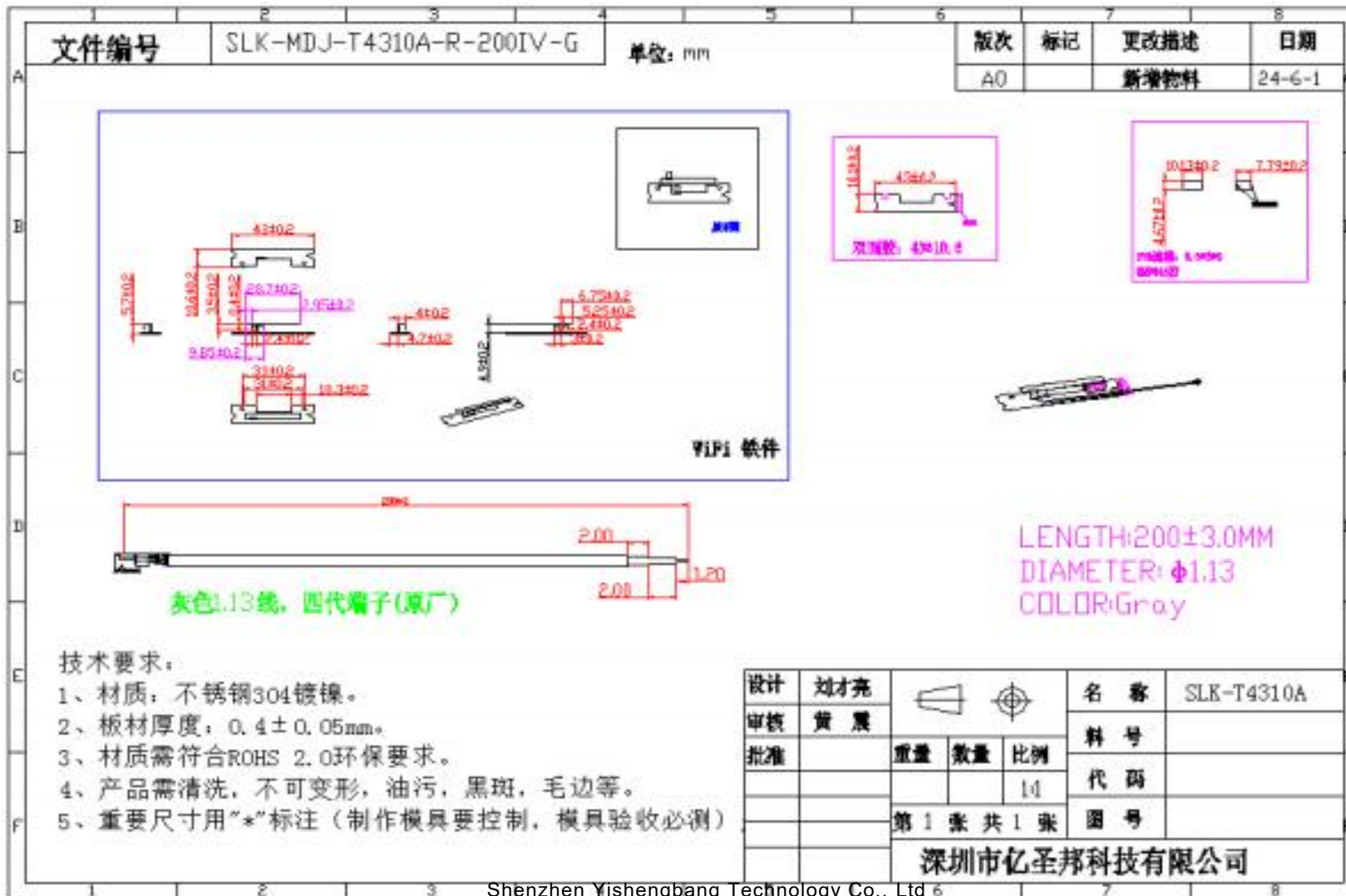
MAIN



2. Test Result

2.2 Antenna Parameter

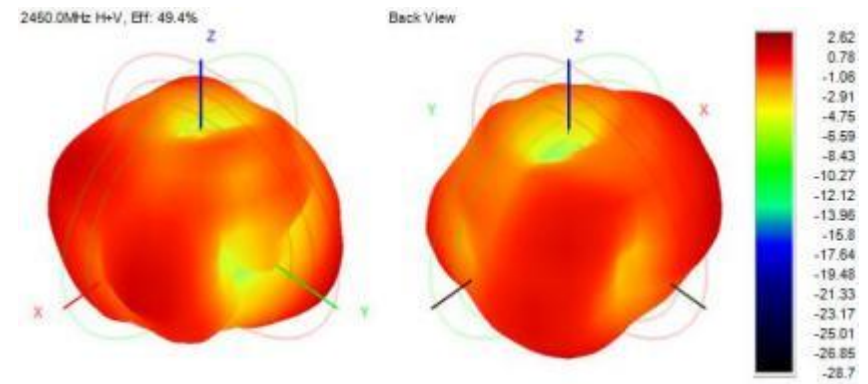
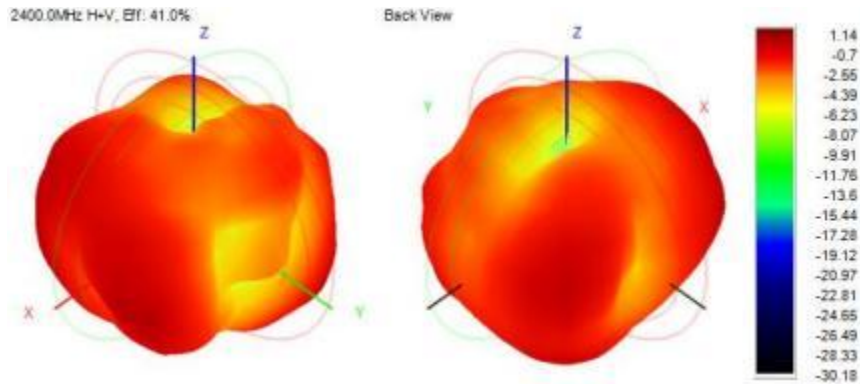
AUX



2. Test Result

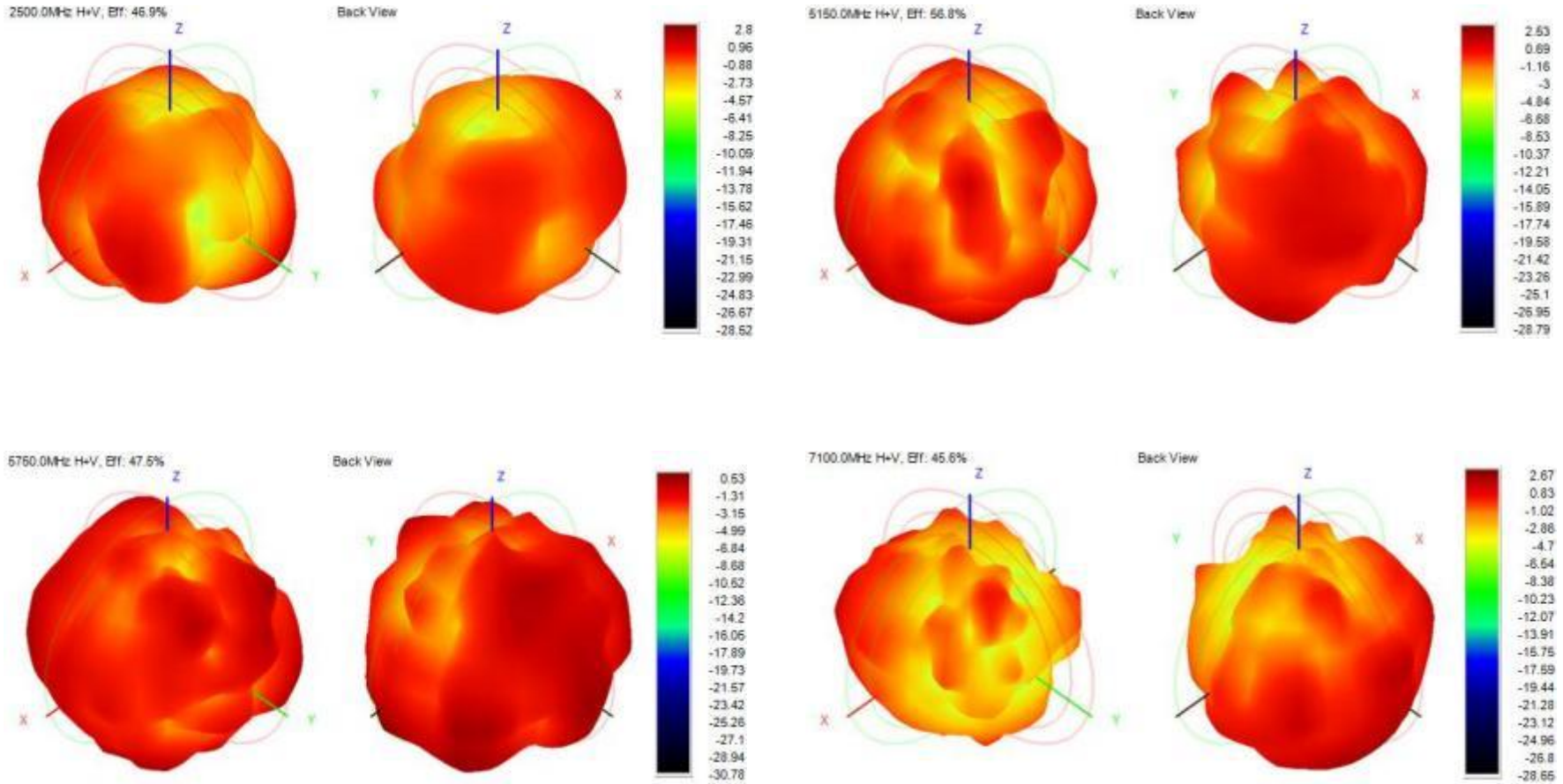
2.3 WIFI MAIN Antenna Gain/Efficiency/3D DATA

Frequency (MHz)	2400.0	2410.0	2420.0	2430.0	2440.0	2450.0	2460.0	2470.0	2480.0	2490.0	2500.0	5150.0	5500.0	5750.0	6400.0	7100.0
Efficiency (dBi)	-3.87	-3.67	-3.26	-3.18	-3.10	-3.06	-2.88	-2.76	-2.96	-2.99	-3.29	-2.46	-2.24	-3.23	-3.93	-3.41
Gain (dBi)	1.14	1.27	2.13	2.47	2.61	2.62	2.77	3.03	3.09	3.12	2.80	2.53	1.38	0.53	1.43	2.67
Efficiency (%)	40.99	42.93	47.17	48.05	49.01	49.40	51.53	53.02	50.63	50.28	46.91	56.78	59.75	47.54	40.44	45.56



2. Test Result

2.3 WIFI MAIN Antenna Gain/Efficiency/3D DATA



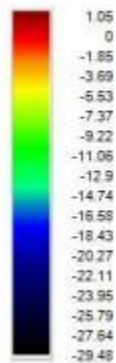
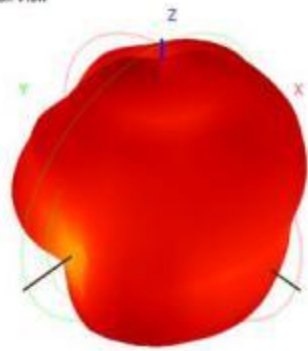
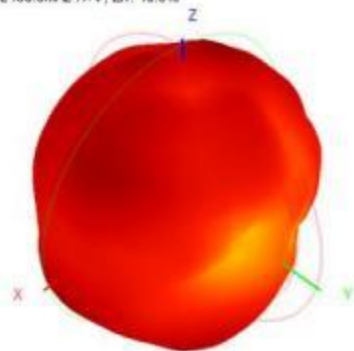
2. Test Result

2.3 WIFI AUX Antenna Gain/Efficiency/3D DATA

Frequency (MHz)	2400.0	2410.0	2420.0	2430.0	2440.0	2450.0	2460.0	2470.0	2480.0	2490.0	2500.0	5150.0	5500.0	5750.0	6400.0	7100.0
Efficiency (dBi)	-3.90	-3.60	-3.36	-3.21	-3.16	-3.02	-3.13	-3.36	-3.68	-3.68	-3.71	-4.17	-2.90	-4.08	-5.21	-5.17
Gain (dBi)	1.05	1.13	1.26	1.32	1.31	1.54	1.63	1.39	1.10	1.17	1.01	0.86	2.16	1.42	0.19	1.30
Efficiency (%)	40.77	43.67	46.11	47.74	48.30	49.83	48.68	46.17	42.83	42.89	42.52	38.28	51.34	39.10	30.15	30.43

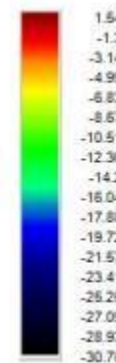
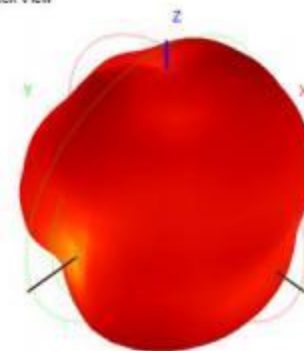
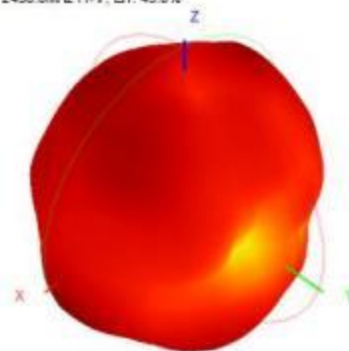
2400.0MHz H+V, Eff: 40.8%

Back View



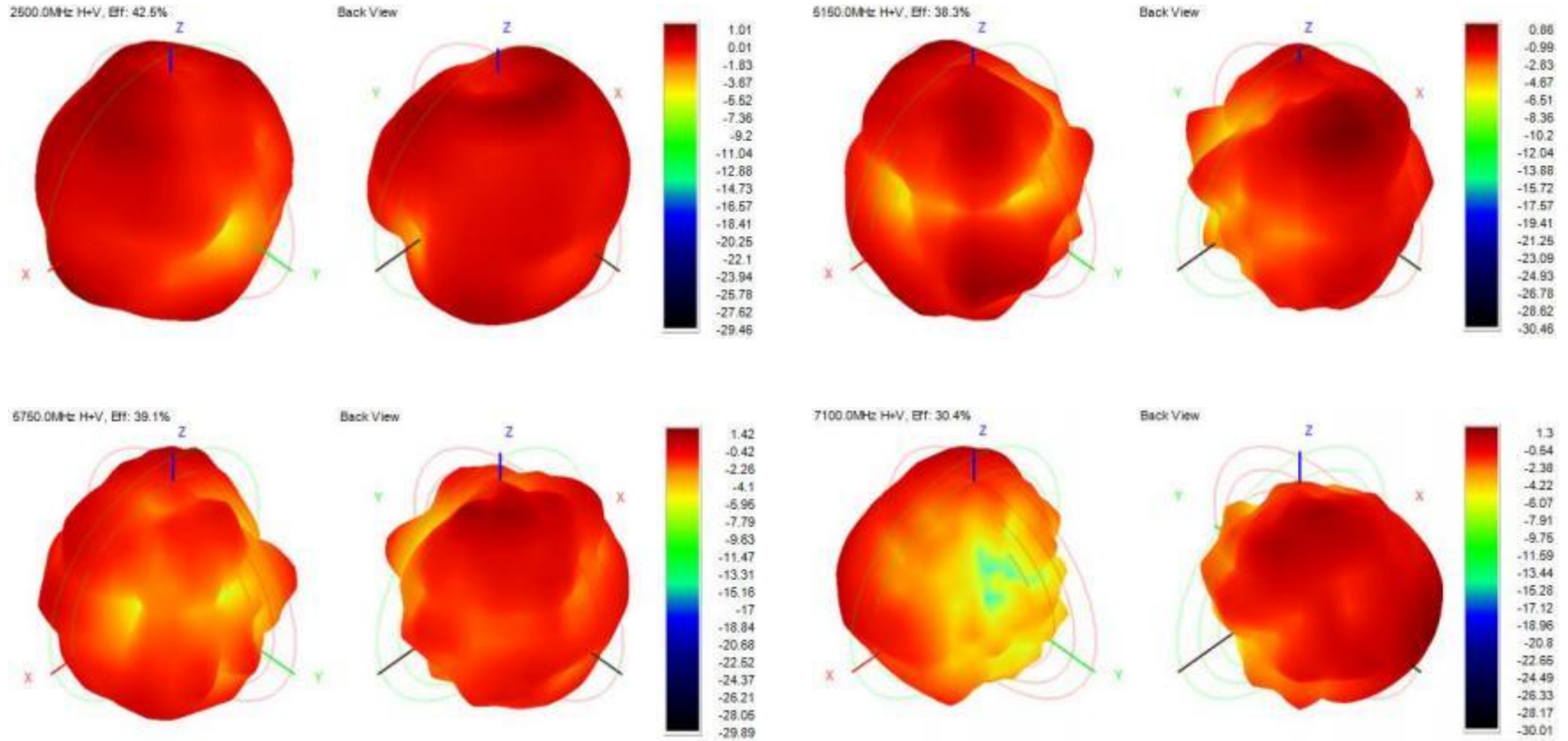
2450.0MHz H+V, Eff: 49.8%

Back View



2. Test Result

2.3 WIFI AUX Antenna Gain/Efficiency/3D DATA



2. Test Result

2.4 WIFI Antenna Throughput

2.4G-TX	2.4G-RX	5.8G-TX	5.8G-RX
249M	322M	895M	924M

Test environment: 10M office space; Bluetooth plays music within 10 meters without any lag.

2. Test Result

2.5 BT Throughput

BT-TX	BT-RX
1.33M	1.37M

Test environment: Indoor 1M

3. Conclusions

Thank you!