



Xview 测温热像仪

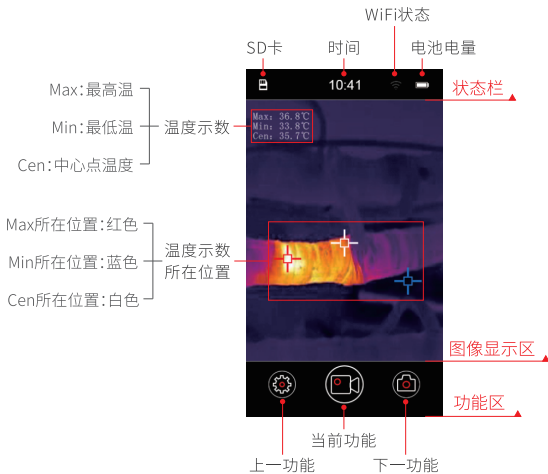
Xview Infrared Thermometer



部件说明



显示界面



功能说明

1. 开关机

关机状态下, 长按Power键并保持4秒, 测温仪启动, 开机画面之后出现红外测温图像界面。

开机状态下, 长按Power键并保持4秒, 测温仪关闭。

2. 功能切换

短按Up/Down键可对功能区各个功能进行循环切换, 切换后, 图标呈白色居中放大显示;

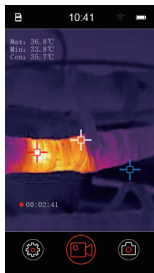
短按Power键进入所选功能界面, 此时对应的功能图标变成红色;

再次短按Power键, 退出功能界面, 返回主界面。

3. 录像

录像界面下，短按Up键开始录像，短按Down键停止录像。

录像时，画面左下方有录像计时提示。



4. 拍照

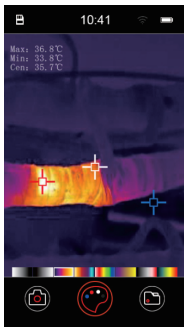
拍照界面下，短按Up/Down键进行拍照。

5. 色板设置

进入色板界面后,在功能区上方会显示出8种色板模式。

短按Up/Down键,色板选中框在8种色板中前后切换,短按Power键保存选择并退出。

八种色板从左到右分别是:白热、黑热、铁红、熔岩、彩虹、铁灰、红热、彩虹2。

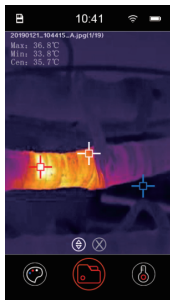


6. 文件管理

进入文件管理界面后，短按Up/Down键可前后翻看保存的照片和视频。

短按Power键后，短按Up键删除文件，短按Down键播放视频。

播放视频时，短按Down键可暂停/继续播放，短按Power键退出视频播放，返回文件管理界面。



7. 测温设置

进入测温设置界面后,可设置或查看测温开关、单位、环境温度、发射率、距离、测温范围等参数。

- 短按Up/Down键,可上下切换选项,白色选中框随之移动;
- 短按Power键进入选项设置,选中框变成红色,此时短按Up/Down键,可设置相关参数;
- 短按Power键保存且退出测温设置界面。



8. 系统设置

在系统设置界面，可设置或查看时间日期、SD卡格式化、USB、Wifi、关于本产品等参数。

- 短按Up/Down键,可上下切换选项,白色选中框随之移动;
- 短按Power键进入选项设置,选中框变成红色,此时短按Up/Down键,可设置相关参数;
- 短按Power键保存且退出系统设置界面。



9. 连接电脑

通过Type-C数据线将设备连接到电脑上,设备的显示屏上会出现如图提示:

- 选择“磁盘”选项,可作为可移动磁盘进行加载。加载后,在“我的电脑”中,可查看设备里的文件。

视频路径:可移动磁盘\VIDEO-CIF\
*.mp4;

照片路径:可移动磁盘\PHOTO-CIF\
*.jpg。

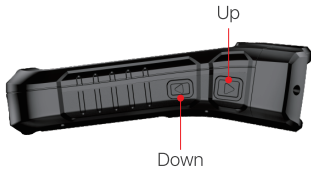
- 选择“充电”选项,可对设备进行充电。



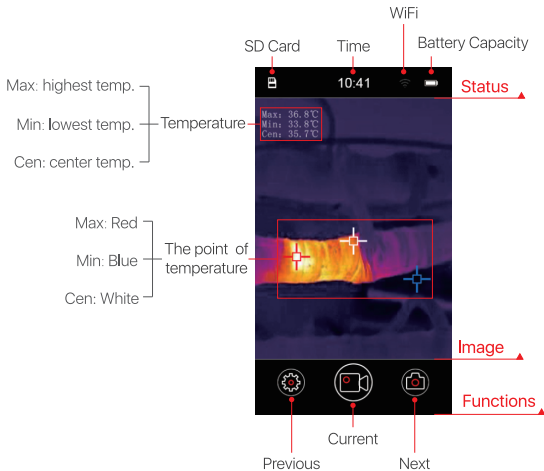
规格参数

产品名称	Xview测温热像仪
分辨率	256×192
NEDT	≤60mk
帧频	25Hz
测温范围	-20°C ~ +120°C (可扩展至-20°C ~ +400°C)
测温精度	±3°C或量程的3% (宽动态状态下)
UVC	支持
WiFi	支持
存储介质	内置存储器 (Flash), 可选配内置TF卡, 最大支持64GB
尺寸	123mm×61mm×35mm
重量	≤200g
外部接口	Type-C

Components



Home Interface



Functions

1. Switch On/Off

The camera will be switched on by pressing the **Power** Button for 4 seconds in the condition of camera off, then infrared image will be generated.

The camera will be switched off by pressing the **Power** Button for 4 seconds in the condition of camera on.

2. Switching Functions

Short Press **Up/Down** button to switch various functions circularly. An enlarged function icon in white colour can be seen from display after function switching.

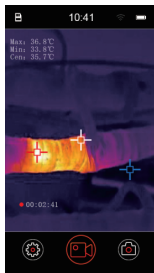
Short press **Power** button to activate the selected function, the function icon will turn red.

Short press **Power** button again can return to main menu and close the selected function.

3. Video Recording

In video recording mode, short press **Up** button to start recording, then video recording timer appears at the left bottom of display, short press **Down** button to stop recording.

While recording, timer appears on the left bottom.



4. Photography

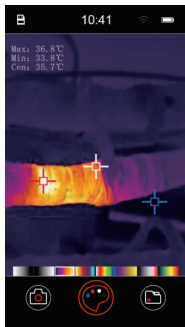
In the photography mode, short press the **Up/Down** button to take a photo.

5. Color Palette

In the color palette mode, short press **Up/Down** button to switch the image mode among White Hot, Black Hot, Iron Red, Lava, Rainbow, Iron Grey, Red Hot and Rainbow 2 circularly.

Press **Up/Down** button to switch among 8 types of palette modes, press **Power** button to save and exit.

The 8 types of palette modes, from left to right, are: White Hot, Black Hot, Iron Red, Lava, Rainbow, Iron Grey, Red Hot and Rainbow 2.

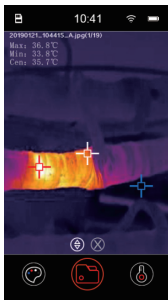


6. File Management

In file management mode, press **Up/Down** button to read photos and videos.

Short press **Power** button to select a photo or video, then short press **Up** button can delete a photo or video, short press **Down** button can play the video.

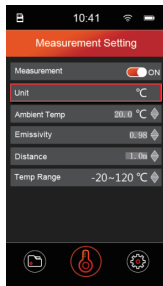
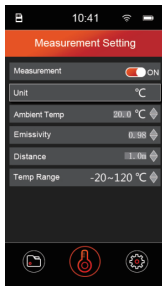
When the video is playing, short press **Down** button to Pause/Continue playing, press **Power** button to close video and back to file management mode.



7. Temp. Measurement Setting

Temp measurement switch, unit, ambient temperature, emissivity, distance and temp measurement range can be set or read in temp measurement setting mode.

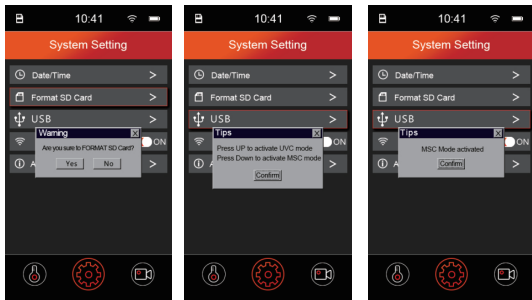
- Short press **Up/Down** button to switch setting menu item.
- Then short press **Power** button to select menu item and set parameters by short pressing **Up/Down** button.
- Short press **Power** button to save and exit .



8. System Setting

Date/Time, Format SD card, USB, WiFi and product info can be read and set in system setting mode.

- Short press **Up/Down** button to switch setting menu item.
- Then short press **Power** button to select menu item and set parameters by short pressing **Up/Down** button.
- Short press **Power** button to save and exit .



9. Connect to PC

Connect camera to PC via Type-C cable, then 'Disk' and 'Charge' options can be seen from display.

- When 'Disk' is selected, the camera will be loaded as a removable disk on PC, the photos and videos can be read from this disk.

Video reading path: Disk\VIDEO-CIF \
*.mp4;

Photo reading path: Disk\PHOTO-CIF \
*.jpg

- Selecting 'Charge ' can charge camera.



Specification

Product Name	Xview Infrared Thermometer
Resolution, pixels	256×192
NEDT, mk	≤60
Frame Rate, Hz	25
Measure Range, °C	-20~+120 (available extension -20~+400)
Measure Accuracy	±3°C or 3% (in extension)
UVC	Support
WiFi	Support
Storage	Build-in storage (Flash), optional TF Card, maximum 64GB
Dimension, mm	123×61×35
Weight, g	≤200
IO port	Type-C

FCC STATEMENT

Labeling Requirements

This device complies with part 15 of the FCC Rules. Operation is subject to the following two conditions: (1) This device may not cause harmful interference, and (2) this device must accept any interference received, including interference that may cause undesired operation.

Information to user

Any Changes or modifications not expressly approved by the party responsible for compliance could void the user's authority to operate the equipment.

Information to the user

Note: This equipment has been tested and found to comply with the limits for a Class B digital device, pursuant to part 15 of the FCC Rules. These limits are designed to provide reasonable protection against harmful interference in a residential installation. This equipment generates uses and can radiate radio frequency energy and, if not installed and used in accordance with the instructions, may cause harmful interference to radio communications. However, there is no guarantee that interference will not occur in a particular installation. If this equipment does cause harmful interference to radio or television reception, which can be determined by turning the equipment off and on, the user is encouraged to try to correct the interference by one or more of the following measures:

- Reorient or relocate the receiving antenna.
- Increase the separation between the equipment and receiver.
- Connect the equipment into an outlet on a circuit different from that to which the receiver is connected.
- Consult the dealer or an experienced radio/TV technician for help.

Body Operation

This device was tested for typical body-support operations. To comply with RF exposure requirements, a minimum separation distance of 0.5cm must be maintained between the user's body and the handset, including the antenna. Third-party belt-clips, holsters, and similar accessories used by this device should not contain any metallic components. Body accessories that do not meet these requirements may not comply with RF exposure requirements and should be avoided. Use only the supplied or an approved antenna.



合肥英睿系统技术有限公司
InfiRay Technologies Co., Ltd.

电话/Tel: +86-400-998-3088

邮箱/Email: sales@infiray.com

网 址/http: www.iraytek.com
www.infiray.com