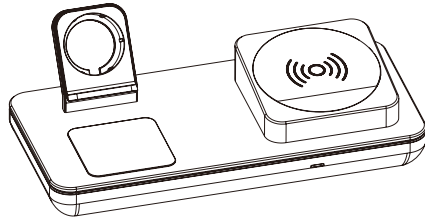
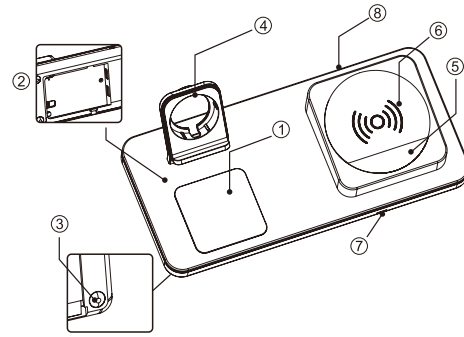


Instruction Manual



Please read the instructions carefully first, in order to install the product correctly for quick use.



Product Introduction

- ① : AirPods Charging back
- ② : Cable management
- ③ : Anti-slip Mat
- ④ : Apple Watch Silica gel plug
- ⑤ : Anti-slip removable rubber(washable for multiple times)
- ⑥ : Mobile Phone Wireless Charging Pad
- ⑦ : indicator light
- ⑧ : type-c interface

Specifications

Product Name: 3 in 1 wireless charging stand

Product Material: Aluminum alloy, Plastic, PCB, PE, Rubber

Input: 5V \approx 3A / 9V \approx 2A

Frequency: 115-205kHz

Conversion Efficiency: >79% (max)

Charging distance: \leq 6mm

Power Interface: Type-C

Product Dimension: 180*90.5*62.5mm

Charging Cable: 1m USB Type-C cable

FCC ID: 2AY3K-YFWW002

Applicable Mobile Phone Mode: Mobile phone with wireless charging function or external wireless charging receiver
For Apple Watch series 5/4/3/2/1/Nike+/Sport/Edition(Both 38/40/42/44mm); Apple AirPods, Apple AirPods Pro

NOTE:

Do not use Apple's 5v/1A stock charger or a computer's usb port to power your wireless charger. cases made of metal, attachments such as magnets, cards, grips will interfere with charging
quick charge 3.0 wall adapter required for fast charge mode

This device complies with part 15 of the FCC Rules. Operation is subject to the following two conditions:
(1) this device may not cause harmful interference, and
(2) this device must accept any interference received, including interference that may cause undesired operation.

Any changes or modifications not expressly approved by the party responsible for compliance

could void the user's authority to operate the equipment.

NOTE: This equipment has been tested and found to comply with the limits for a Class B digital device, pursuant to Part 15 of the FCC Rules. These limits are designed to provide reasonable protection against harmful interference in a residential installation. This equipment generates, uses and can radiate radio frequency energy and, if not installed and used in accordance with the instructions, may cause harmful interference to radio communications. However, there is no guarantee that interference will not occur in a particular installation.

If this equipment does cause harmful interference to radio or television reception,

which can be determined by turning the equipment off and on, the user is encouraged to try to correct the interference by one or more of the following measures:

- Reorient or relocate the receiving antenna.
 - Increase the separation between the equipment and receiver.
 - Connect the equipment into an outlet on a circuit different from that to which the receiver is connected.
 - Consult the dealer or an experienced radio/TV technician for help.
- This device complies with part 15 of the FCC Rules. Operation is subject to the following two conditions: (1) This device may not cause harmful interference, and (2) this device must accept any interference received, including interference that may cause undesired operation.

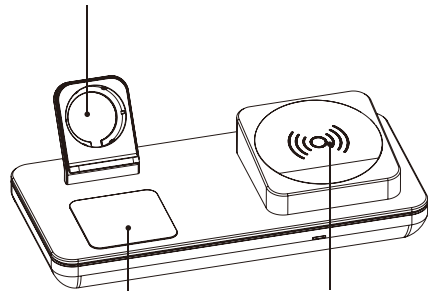
FCC RF exposure statement:

The equipment complies with FCC radiation exposure limits set forth for an uncontrolled environment. During the operation of device a distance of 15 cm surrounding the device and 20 cm above the top surface of the device must be respected.

正面

Wireless charging mode

Apple Watch magnetic charger dock

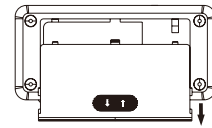


iphone wireless charger

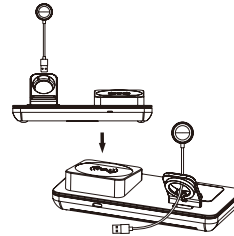
Airpods wireless charger

Apple Watch cable installation steps

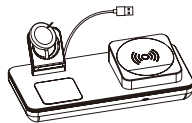
1. Slide open the rear cover



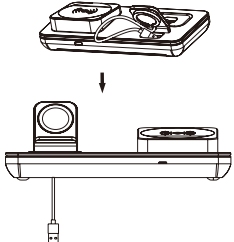
2. Insert the usb end of the watch wire into the hole of the rubber ring



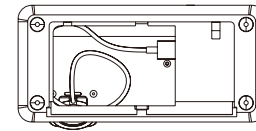
3. Plug the charger into silicone



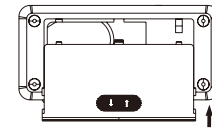
4. Install the watch charger



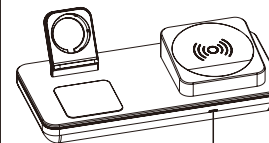
5. Install the USB line according to the diagram built-in cord organizing space can help you manage your long cable



6. Slide forward the bottom cover and fix it



Power indicator status



Power indicator

- 1, Turn on the power and the blue light will be on for 1 s
- 2, The blue light is always on when the mobile phone is charging normally
- 3, The red light is flashing, and there are metal foreign matters on the charging board

反面