

TZ-812

Rechargeable and Waterproof Remote Dog Training Collar Operation Guide

Please read the entire guide before using

1

Thanks for choosing the Rechargeable and Waterproof Remote Dog Training Collar. Our mission is to provide you with the safe tools and techniques to train your dog.

Contents

- 2 Features
- 3 How Does the Rechargeable and Waterproof Training Collar Work
- 4 Precautions
- 5 Components
- 6 Key Definition
- 8 Operation Guide
- Step 1 Preparing the Remote Transmitter
- Step 2 Preparing the Receiving Collar
- Step 3 Encoding the Remote Transmitter and Receiving Collar
- Step 4 Testing the Rechargeable and Waterproof Training Collar
- Step 5 Fitting the Receiving Collar to your dog
- 12 Frequently Asked Questions
- 14 General Tips for Training Your Dog
- 15 Common Weights of Different Dog Breeds

Features

- 1. Rechargeable Remote Transmitter
- 2. Rechargeable and Waterproof Receiving Collar
- 3. 1000 feet remote control range between Remote Transmitter and Receiving Collar.
- 4. Beep Mode activates a correcting tone on the Receiving Collar
- 5. Adjustable vibration intensity level from 1-9 level
- 6. Adjustable static shock intensity level from 1-9 level (optional)

2

- 7. Power saving modes:
 - The Receiving Collar will go into Standby Mode if it's idle for more than 5 mins. Any movements will activate the Receiving Collar.
 - The Transmitter will go into Standby Mode (0 will be light off with 30s, 1 will be light off with 1min). Press any button to re-activate it from Standby mode.
- 8. The Remote Transmitter can be used to control up to 2 Receiving Collars.
- 9. 2 pairs of metal contacts (1 short and 1 long) are included to suit the length of your dog's hair.

How does the Rechargeable and Waterproof Dog Training Collar Work

The Rechargeable and Waterproof Training Collar has been proven to be a safe, comfortable, and effective training system for all dogs weighing over 15lbs. This system allows you to control your dog within a range up to 1000 feet. At the press of a button, the Remote Transmitter sends signal to the Receiving Collar and activates a Beep, a Vibration or a Static Shock correction output. By using the Training Collar properly, you can correct much of your dog's undesired behavior and teach basic and advanced obedience commands.

Important: the Training Collar has an effective range up to 1000 feet. Hold the Remote Transmitter horizontally away from your body to achieve the optimum range. Terrain features, weather, vegetation, transmission from other radio devices and other factors may affect the range of the Remote Transmitter.

3

Precautions

DO NOT use this product for aggressive dogs or vicious animals.

Risk of skin damage.

It's important to fit the collar properly. A collar that is fitted too tightly or worn for too long may harm your dog's skin. This condition, which ranges from redness to pressure ulcers, is commonly known as bed sores.

CAUTION

- Do not let your dog wear the collar for more than 12 hours per 24-hour period.
- If possible, gently reposition the collar on your dog's neck every 1 or 2 hours.
- Never attach a lead to the Receiver Collar, as this would cause excessive pressure on the contact points.
- When using a separate collar to connect a leash, please ensure that it does not put excessive pressure on the electronic collar.
- Examine your dog's neck daily for signs of chafing or soreness.
- If a rash or sore is found, stop using the collar till the injured skin has been healed.
- If the condition persists for more than 48 hours, consult your veterinarian.
- If possible, please use the Beep Mode or Vibration Mode at first, then can try Static shock function.

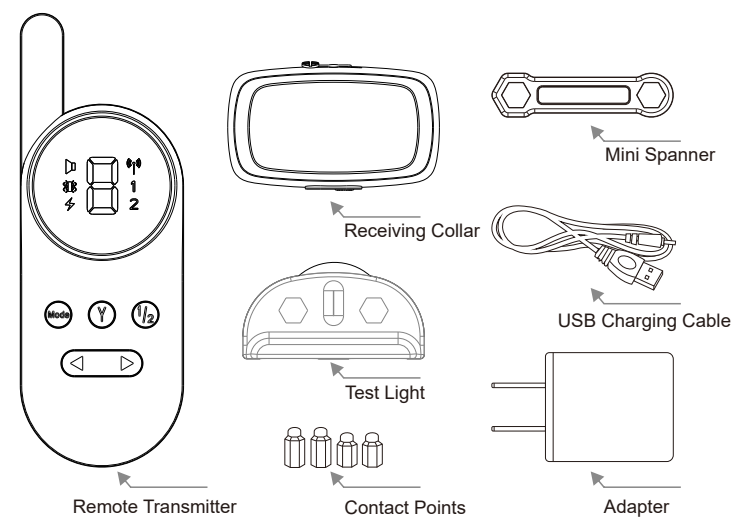
Please ensure that you charge both the Receiving collar and the Remote Transmitter before using!

To extend the battery life of this product, if you do not intend to use it for a long period of time, please charge them per month.

4

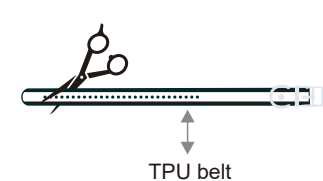
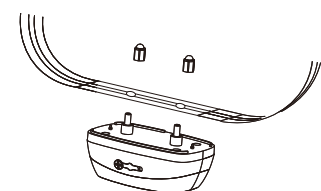
Components

TZ-812



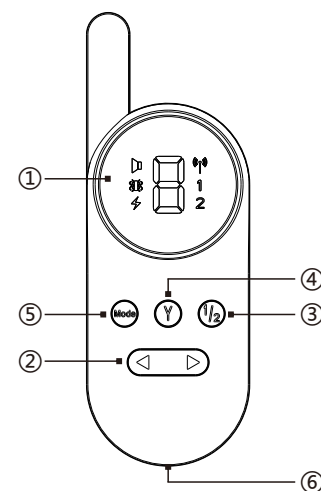
How to install the TPU belt to the Receiver collar

Excess strap can be cut if needed, it does not shred



5

Key Definition



1. LED Screen:

- Beep mode: When this symbol [Beep icon] is displayed, press the Y button to activate a Beep tone on the Receiving Collar.
- Vibration Mode: when this symbol [Vibration icon] is displayed, press the Y button to activate Vibration. Use the Up/ Down buttons to adjust the intensity of the vibration from 1 to 9.
- Static Shock Mode: when this symbol [Shock icon] is displayed, press the Y button to activate Static Shock. Use the Up/ Down buttons to adjust the intensity of the shock from 1 to 9.

- 1. LED screen
 - 2. Up/ Down button
 - 3. Dog button
 - 4. Launch button
 - 5. Mode button
 - 6. Charging port
- [0] 1-9 level
 - [Beep icon] Beep mode
 - [Vibration icon] Vibration mode
 - [Shock icon] Static shock mode
 - [Dog 1 icon] Dog 1
 - [Dog 2 icon] Dog 2

6

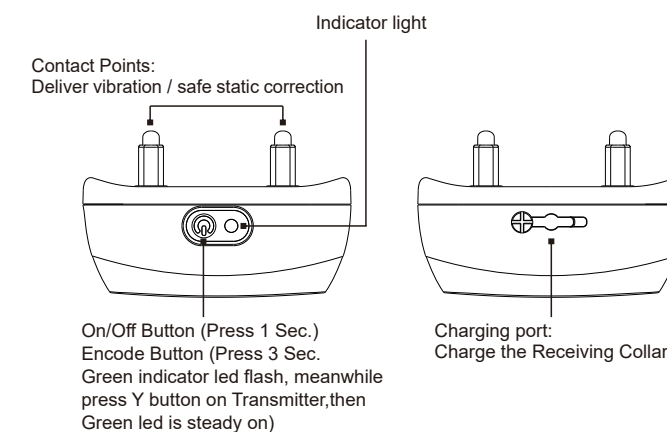
- 2. Up/ Down buttons: these are used to adjust the Intensity of the Vibration or Shock from the lowest level 1 to the highest level 9.
- 3. Collar button: press this button to change between the 1st and 2nd Receiving Collar (if applicable).
- 4. Launch button: when you have finished choosing the correct mode, press the launch button to start.
- 5. Mode button: use this button to select mode among Beep, Vibration or Static Shock.
- 6. Charging port: plug the USB charging cable into the port to charge the Remote Transmitter.

* Lithium battery: 3.7V 500mAh for the Remote Transmitter
3.7V 250mAh for the Receiving Collar

* Operating Frequency: RF433 MHZ

* Contact points: 2 pairs of metal contacts to be chosen to suit the length of your dog's hair.

* Mini Spanner: a tool to screw/unscrew contact points on the electrodes.



7

Operation Guide

Step 1 Preparing the Remote Transmitter:

- Charging the Remote Transmitter
1. Plug the USB Charging Cable into the Charging port.
 3. Plug the Adapter into a standard outlet.
 4. The number 0 in LCD screen will be lighting circularly when charging.
 5. The LED screen will show as - once its fully charged with 2.5 hours. Remove the USB Charging Cable.
- Low battery indicator:** The LED screen will show as P and flash 30seconds, then transmitter will be turned off automatically.

How to use the Remote Transmitter

1. Press any button to activate it.
2. Use the Mode button to cycle through different modes. The LED screen will display which mode is currently actived ([Beep icon], [Vibration icon]).
3. Press the Up/Down ([Left/Right]) buttons to set the intensity of the vibration or shock.

Power Saving Mode: the Remote Transmitter will go into Standby Mode if it is idle for 1 min. The LED screen on the Remote Transmitter will not display anything in this case (0 will be light off with 30s, [Beep icon], [Vibration icon] will be light off with 1min), press any button to re-activate it.

Step 2 Preparing the Receiving Collar:

- Charging the Receiving Collar
1. Remove the rubber cover and plug the USB Charging Cable into the charging port.
 2. Plug the Adapter into a standard outlet.
 3. The red LED will keep lighting when the Receiving Collar is charging.
 4. The green LED will be lighting once it's fully charged with 1.5 hours.
 5. Remove the Charging Cable, and put back the rubber cover.

Low battery indicator: The red LED will be flash with 30seconds, then Receiving Collar will be turned off automatically.

8

How to use the Receiving Collar:

Press the On/Off button to turn the Receiving Collar on. The green LED will illuminate to confirm that the Receiving Collar is ON.

Power Saving Mode: The Receiving Collar will go into Standby Mode if it is idle for more than 5 mins. Any movements will activate the Receiving Collar. If the Receiving Collar does not be activated when you press the Y button on Transmitter, and the Green LED on receiving collar is not on, then gently shake the Receiving Collar, the Receiving Collar will be activated and the Green LED light will illuminate.

Step 3 Encoding the Remote Transmitter and the Receiving Collar:

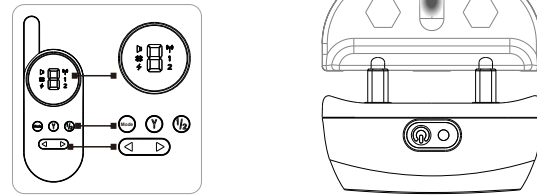
1. Press any button to activate the Remote Transmitter.
2. Press the to choose either Collar 1 or 2.
3. Press the with 3sec on the receiving collar, when the Green LED flash, press the on the Transmitter simultaneously, then Green LED on receiving collar will be steady on. Encode successfully.
4. Repeat steps 2-4 to encode the Receiving Collar 2. Please wait at least 10 seconds after you encode Receiving Collar 1, choose another for Receiving Collar 2.

Note: Most of the Rechargeable and Waterproof Training Collars have already been encoded before leaving the factory. If so, just press any button on the transmitter to activate, then press the with 1sec on receiving collar to turn on it, after that, you can test the function refer to step 4. (Page 9)

Step 4 Testing the Rechargeable and Waterproof Training Collar: Testing the Static Shock ⚡ Function

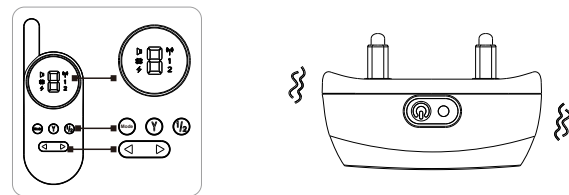
The static impulse generated by the Receiving Collar cannot be seen by naked eyes. Test whether the Static Shock Function works by using the following procedure:

- Remove the Test Light from the package and connect it to the contact points on the receiving collar.
- Press the **"Mode"** button on Remote Transmitter to select Shock mode. The intensity of the Static Shock can be adjusted by pressing Up/Down button() from level 1 to 9. Press the launch (Y) button on the Remote Transmitter.
- If the Test Light flashes, the Static Shock Function is working correctly.



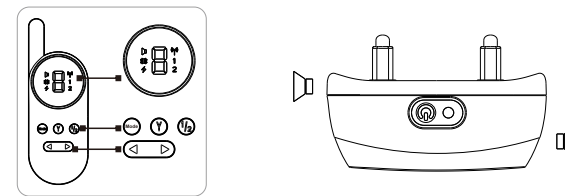
Testing the Vibration Function

- Press the **"Mode"** button on Remote Transmitter to select Vibration mode. The intensity of the vibration can be adjusted by pressing Up/Down button from level 1 to 9.
- Press the launch (Y) button on the Remote Transmitter. If the Receiving Collar vibrates, the Vibration Function is working correctly.



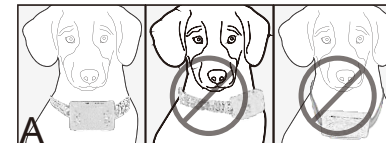
Testing the Beep Function

- Press the **Mode** button on Remote Transmitter to select Beep Mode.
- Press the **Y** button on the Remote Transmitter. If the Receiving Collar beeps, the Beep Function is working correctly.

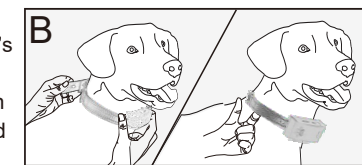


Step 5 Fitting the Receiving Collar to your dog:

1. Center the Contact Points under your dog's neck(A).



2. The Receiving Collar should be positioned snugly around your dog's neck. **Important:** Make sure that you can fit one finger between the strap and your dog's neck(B).



Note: Choose the correct Contact Points to suit the length of your dog's hair. If your dog has long hair or a thick coat, use the longer Contact Points.

Frequently Asked Questions

Q1: How old does my dog have to be before I start using the Rechargeable and Waterproof Training Collar?

A: Your pet should be able to recognize basic commands such as "Sit!" and "Stay!". The Rechargeable and Waterproof Training Collar may be too large for dogs weighing less than 15lbs.

The Receiving collar is adjustable in length from 9.5 to 26 inches. If your dog's neck is smaller than 26 inches, please cut the redundant part. This product is not suitable for dogs with necks larger than 26 inches.

Q2: Once my dog is trained and has learned to obey my commands, will he have to continue wearing the Receiving Collar?

A: Probably not, although you may need to reinforce the training with the Receiving Collar from time to time.

Q3: Is the Receiving Collar waterproof?

A: Yes. In fact, your dog can swim while wearing the Receiving Collar Must seal well the charging port tightly, and keep it dry after get wet.

Q4: What is the lifespan of the lithium batteries?

A: The Lithium battery in the Remote Transmitter and the Receiving Collar can be charged for 400 times.

Q5: How long should the training session for my dog be?

A: The training sessions should be kept short for maximum effectiveness. It's advised not to train your dog for more than 10-15 mins at a time.

I have fitted the Rechargeable and Waterproof Training Collar correctly, but my dog is not responding.

- Ensure that the batteries are fully charged. You need to charge both the Remote Transmitter and the Receiving Collar for about 2 hours before they can be used for the first time.
- Check the Remote Transmitter can adjust the intensity level of the vibration or static shock to higher level more than level 1.
- Restart the Receiving collar by pressing the On/ Off button.
- Test the 3 functions (Beep, Vibration and Static Shock) before using the Receiving Collar for the first time. Please refer to "Step 4" (page 9) for instructions on how to do this.
- The Receiving collar will go into Standby Mode if it is idle for more than 5 minutes. Any movements will re-activate it.
- Make sure that the Contact Points are touching your dog's skin.
- Trim your dog's fur where the Contact Points touch the neck. Ensure that you are using the correct set of Contact Points suitable for the length of your dog's fur.
- If none of the above works, encode the Remote Transmitter and the Receiving Collar again. See "Step 3" (Page 9) for instructions on how to do this.

I am trying to test the Receiving Collar manually, but it does not work.

- If you want to test the Receiving Collar manually on your hand or leg, please touch the 2 Contact Points simultaneously. Touching only one of the Contact Points will not work.

The Receiving Collar is broken. It has not worked since I dropped it.

- The Receiving Collar is not designed to be drop-proof. Please do not drop the Receiving Collar, as this will damage the interior circuits.

The Remote Transmitter does not work

- You must charge the Remote Transmitter before you use it for the first time. Charging time is typically 2.5 hours.
- Ensure that the Remote Transmitter has adequate power.
- Remote Transmitter will automatically go into Standby Mode if it is idle for 1 min. No LED light will be illuminated at this time. Press any button to re-activate the Remote Transmitter.

General Tips for Training Your Dog

- Eliminate one behavioral problem or teach one command at a time. If you move too fast with the training, your dog may become confused.
- Be consistent. Give your dog a single Beep, Vibration, or Static Shock for each misbehavior.
- Do not over-correct your dog. Use a few stimulations as possible during training.
- Unless you can supervise him/ her, it is recommended that you restrain your dog from environments in which he/ she has a history of misbehaving. However, setting up a training session in this case can dramatically improve your chances of success.
- If your dog reacts to the training by hiding or acting fearfully, redirect his/ her attention to a simple and appropriate behavior, such as the "Sit!" command.

Common Sizes of Different Dog Breeds

Size	Neck (cm)	Chest (cm)	Back Length (cm)	Type
Mini	20-22	25-30	19	Chihuahua, Yorkshire Terrier
Small	20-24	29-36	23	Chihuahua, Yorkshire Terrier, Poodle, Pomeranian
Medium	23-28	35-42	28	Maltese Dog, Shin Tzu
Large	27-31	41-47	31	Miniature Schnauzer, Pekingese
Large	30-34	46-53	35	Schnauzer, English Cocker Spaniel
Large	33-37	52-59	40	Beagle
Huge	43-48	76-84	60	Husky
	47-52	88-97	65	Labrador Retriever
	52-62	92-100	70	Golden Retriever, Old English Sheepdog

Common Weights of Different Dog Breeds

- Large Dogs(Body height over 61cm, weight over 88lbs)
- Medium Dogs(Height 40.7-61cm, Weight 24-86lbs)
- Small Dogs(Height 25.5-40.7cm, Weight 8-22lbs)
- Mini Dogs(Height under 25cm, Weight under 8lbs)

FCC Caution:

This device complies with part 15 of the FCC Rules. Operation is subject to the following two conditions: (1) This device may not cause harmful interference, and (2) this device must accept any interference received, including interference that may cause undesired operation.

Any Changes or modifications not expressly approved by the party responsible for compliance could void the user's authority to operate the equipment.

Note: This equipment has been tested and found to comply with the limits for a Class B digital device, pursuant to part 15 of the FCC Rules. These limits are designed to provide reasonable protection against harmful interference in a residential installation. This equipment generates uses and can radiate radio frequency energy and, if not installed and used in accordance with the instructions, may cause harmful interference to radio communications. However, there is no guarantee that interference will not occur in a particular installation. If this equipment does cause harmful interference to radio or television reception, which can be determined by turning the equipment off and on, the user is encouraged to try to correct the interference by one or more of the following measures:

- Reorient or relocate the receiving antenna.
- Increase the separation between the equipment and receiver.
- Connect the equipment into an outlet on a circuit different from that to which the receiver is connected.
- Consult the dealer or an experienced radio/TV technician for help.

This equipment complies with FCC radiation exposure limits set forth for an uncontrolled environment.