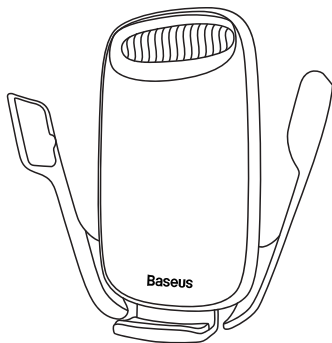


倍思 × 倍车品

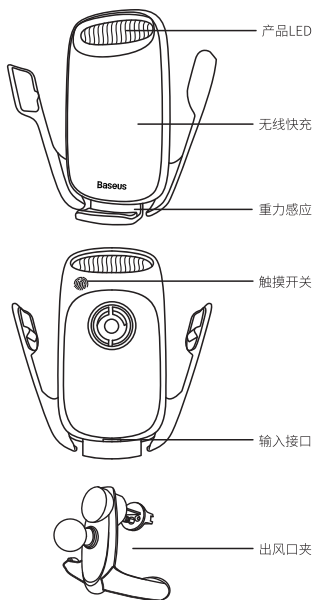


倍思银河电动支架无线充 使用说明书

使用产品前请仔细阅读本说明书,并妥善保管

产品介绍

感谢您选择购买我们的产品,这是一款集车载支架与无线充电功能为一体的车载出风口支架,使用本产品前,请认真阅读本说明书,妥善保存,以备查阅。

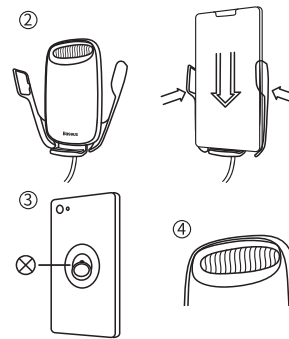
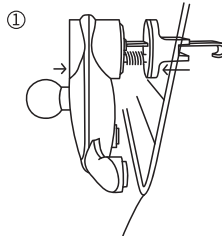


规格参数

产品型号: WXHW02
输入: 5V=2A / 9V=2A / 12V=1.67A (MAX)
频率: 110-205KHz
转换效率: >70% (Min)
充电距离: ≤5mm
产品尺寸: 117×117×125mm
适用机型: 有无线充电功能或外置无线充电接收器的手机
注: 以上参数均来源于产品实测,实际参数会因产品或其他因素而有差异

使用说明

- 1.将产品后部夹子按压弹簧使之夹紧在汽车出风口位置,调整好合适的角度,夹子底部两个支脚抵住出风口下侧。
- 2.将产品充电线插入支架底部插口,产品自动回复到打开状态,将手机放入,支架重力感应到手机后夹臂合并,锁紧手机;并开始给手机充电。
- 3.若手机放上后不能够充电,请检查手机背面是否有金属物质;或者是需要调节支架底部使手机无线充电区域对准产品无线充电区域;
4. LED指示说明:待机:蓝绿交替呼吸;充电:绿灯呼吸;充满电绿灯常亮;异物,蓝绿灯快速闪烁;



注意事项

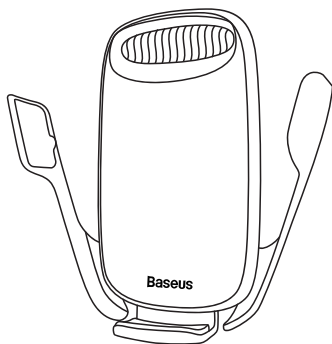
- 1.使用本产品时,请使用支持QC2.0/QC3.0的输出电压为5V 2A/9V 2A/12V 1.67A的适配器。
- 2.充电时接触面不能放置金属物,如铁片,指环,金属保护壳等;
- 3.手机充电时,如有发现断续充电或发热严重的情况,很可能是手机接收线圈与无线充电线圈没有对准,请尝试冷却手机,再进行正确位置对齐。
- 4.本产品有输入过流保护功能,如使用不当会关闭或减小输出功率,请检查是否设备有异常或使用不当。
- 5.使用环境温度保持在0-30°C,请勿将产品置于水中、火中、过高(>40°C)和过低温度(<-20°C)环境中,勿让儿童接触配件。
- 6.请使用干燥软布清洁表面,不要用化学品、肥皂或者洗涤剂清洗。
- 7.用户不正确使用或不正确放置本产品可能会导致本产品寿命降低或损坏,因此带来的责任,不属于保修责任或厂家责任,敬请谅解。
- 8.以下情况苹果手机将无法进入快充充电导致充电速度变慢。
a) 苹果手机电量大于80%
b) iOS版本 11.1.2以下
c) 手机温度大于35度。

品牌名: Baseus倍思 X 倍车品
公司: 深圳市时尚创新科技有限公司
地址: 深圳市龙岗区坂田街道岗头社区雪岗路2008号
倍思智能园B栋五层
执行标准: Q/SSCZ 021-2020
热线: 4000-712-711 网址: www.baseus.com

Copyright©2010-2020 Shenzhen Times Innovation Technology Co.,Ltd
All Rights Reserved



Baseus | inAuto

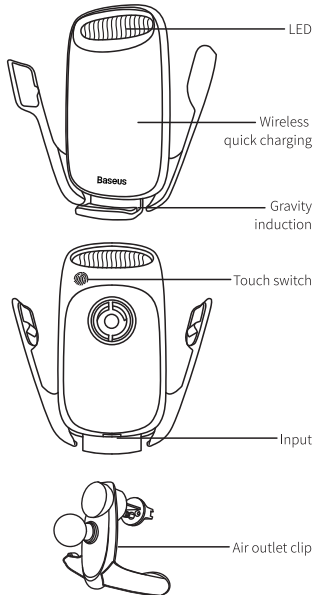


Baseus Milky Way Electric Bracket Wireless Charger Operation Manual

Please read the instruction manual carefully before using the product and keep it with proper care.

Production information

Thank you for purchasing our products. This is a vehicle air outlet bracket with an intelligent device integrating car holder and wireless charging. Please read the operation manual carefully before using the product and the manual shall be properly kept for future reference.

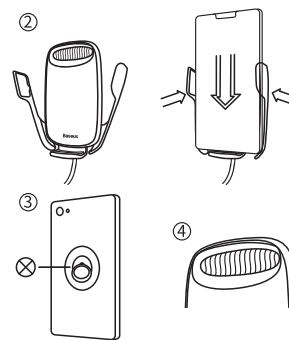
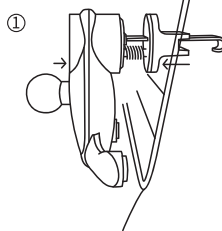


Specifications and parameters

Model: WXHW02
Input: 5V=2A / 9V=2A / 12V=1.67A (MAX)
Frequency: 110-205KHz
Conversion efficiency: >70% (Min)
Charging distance: ≤5mm
Product dimensions: 117×117×125mm
Applications: Mobile phones with wireless charging function or external wireless charging receivers
Note: The above parameters are obtained from actual measurements. Actual parameters may vary due to products or other factors.

Operation instructions

1. Press the spring on the rear clamp of the product to make it tightly clamp the air outlet; adjust a proper angle, and the two legs of the clamp shall lean against the lower of the air outlet.
2. Insert the charging cable into the jack at the bottom of the bracket, and the product will automatically open; the bracket gravity induction will lock up a mobile phone after it is placed on the bracket, and charging for the mobile phone will be started.
3. If the charging is not successful after placing a mobile phone on it, please inspect whether there is metal on the back of the mobile phone; or the bracket bottom needs to be adjusted to make the wireless charging area align with that of the product.
4. LED indication: Standby: blue light and green light flash alternately; Charging: green light flashes; Fully charged: green light keeps on; Foreign body, blue and green flash in turn rapidly



Instructions

1. When using the product, please use any adapter that supports QC2.0/QC3.0, with output voltage 5V 2A/9V 2A/12V 1.67A.
2. No metal objects, such as metal plate, ring, or metal protective shell, can be placed on the contact surface during charging.
3. In case of interrupted charging or serious high temperature during charging, the possible cause is that the receiving coil of the mobile phone fails to completely align with the wireless charging coil. Please cool the mobile phone, and then conduct correct alignment.
4. The product is equipped with overcurrent and overvoltage protection. It may be turned off or lower output power if it is not properly used. Please inspect whether the equipment has any abnormal condition or it is properly used.
5. The operating temperature range shall be kept at 0-30°C. Do not put it into water, fire or any environment with extremely high temperature (>40°C) or extremely low temperature (<-20°C). Keep it out of reach of children.
6. Please use a dry and soft cloth to clean the surface. Chemicals, soap or detergent shall not be used.

7. The product may be damaged or its service life may be reduced due to improper operation or placement, and we or the manufacturer will not be responsible for any responsibility hereof.
8. Quick charging may not be available for iPhones due to the following conditions. As a result, the charging speed may be slower.
a) The battery level of any iPhone is larger than 80%;
b) iOS version is below 11.1.2;
c) Mobile phone temperature is higher than 35°C.



Shenzhen Times Innovation Technology Co., Ltd.
Add: 5th Floor, Building B, Baseus Intelligence Park,
No.2008, Xuegang Rd, Gangtuo Community,
Bantian Street, Longgang District, Shenzhen
Executive Standard: Q/SSCZ 021-2020
Hotline: +86-4000-712-711 Website: www.baseus.com

This device complies with part 15 of the FCC Rules. Operation is subject to the following two conditions: (1) This device may not cause harmful interference, and (2) this device must accept any interference received, including interference that may cause undesired operation.

Any Changes or modifications not expressly approved by the party responsible for compliance could void the user's authority to operate the equipment.

Note: This equipment has been tested and found to comply with the limits for a Class B digital device, pursuant to part 15 of the FCC Rules. These limits are designed to provide reasonable protection against harmful interference in a residential installation. This equipment generates uses and can radiate radio frequency energy and, if not installed and used in accordance with the instructions, may cause harmful interference to radio communications. However, there is no guarantee that interference will not occur in a particular installation. If this equipment does cause harmful interference to radio or television reception, which can be determined by turning the equipment off and on, the user is encouraged to try to correct the interference by one or more of the following measures:

- Reorient or relocate the receiving antenna.
- Increase the separation between the equipment and receiver.
- Connect the equipment into an outlet on a circuit different from that to which the receiver is connected.
- Consult the dealer or an experienced radio/TV technician for help.

The equipment complies with FCC radiation exposure limits set forth for an uncontrolled environment. During the operation of device a distance of 15cm surrounding the device and 20 cm above the top surface of the device must be respected.