



Shenzhen Huaxia Testing Technology Co., Ltd

1F., Block A of Tongsheng Technology Building, Huahui Road, Dalang Street, Longhua District, Shenzhen, China

Telephone: +86-755-26648640
Fax: +86-755-26648637
Website: www.cqa-cert.com

Report Template Version: V04
Report Template Revision Date: 2018-07-06

RF Exposure Evaluation Report

Report No.: CQASZ20210300309E-02
Applicant: Shenzhen Times Innovation Technology Co., Ltd
Address of Applicant: 5th Floor, Building B, Baseus Intelligence Park, No.2008, Xuegang Rd, Gangtou Community, Bantian Street, Longgang District, Shenzhen.
Equipment Under Test (EUT):
Product: Baseus Simple 2 in 1 Wireless Charger(Turbo Edition)
Model No.: BS-W508
Test Model No.: BS-W508
Brand Name: Baseus
FCC ID: 2AY37-W508
Standards: 47 CFR Part 1.1307
47 CFR Part 1.1310
KDB 680106 D01 RF Exposure Wireless Charging Base App v03
Date of Receipt: 2021-03-18
Date of Test: 2021-03-18 to 2021-04-29
Date of Issue: 2021-04-29
Test Result : **PASS***

*In the configuration tested, the EUT complied with the standards specified above

Tested By: Lewis Zhou
(Lewis Zhou)

Reviewed By: Timo Lei
(Timo Lei)

Approved By: Sheek Luo
(Sheek Luo)



1 Version

Revision History Of Report

Report No.	Version	Description	Issue Date
CQASZ20210300309E-02	Rev.01	Initial report	2021-04-29

2 Contents

	Page
1 VERSION	2
2 CONTENTS	3
.....	3
3 GENERAL INFORMATION	4
3.1 CLIENT INFORMATION.....	4
3.2 GENERAL DESCRIPTION OF EUT.....	4
3.3 PRODUCT SPECIFICATION SUBJECTIVE TO THIS STANDARD.....	4
3.4 TEST ENVIRONMENT.....	5
3.5 DESCRIPTION OF SUPPORT UNITS.....	5
3.6 TEST LOCATION.....	6
3.7 TEST FACILITY.....	6
3.8 EQUIPMENT LIST.....	6
4 RF EXPOSURE EVALUATION	7
4.1 RF EXPOSURE COMPLIANCE REQUIREMENT.....	7
4.1.1 <i>Limits</i>	7
4.1.2 <i>Test Procedure</i>	7
4.1.3 <i>Test Setup</i>	8
4.1.4 <i>Test Results</i>	8
APPENDIX A: PHOTOGRAPHS OF TEST SETUP	10

3 General Information

3.1 Client Information

Applicant:	Shenzhen Times Innovation Technology Co., Ltd
Address of Applicant:	5th Floor, Building B, Baseus Intelligence Park, No.2008, Xuegang Rd, Gangtou Community, Bantian Street, Longgang District, Shenzhen.
Manufacturer:	Shenzhen Times Innovation Technology Co., Ltd
Address of Manufacturer:	5th Floor, Building B, Baseus Intelligence Park, No.2008, Xuegang Rd, Gangtou Community, Bantian Street, Longgang District, Shenzhen.
Factory:	Dongguan goal lock electronic technology co.,Ltd
Address of Factory:	Room 302, 2 Building, No.8, Sha Bu Street, Bamboo oda, Fenggang Town, Dongguan City, Guangdong Province

3.2 General Description of EUT

Product Name:	Baseus Simple 2 in 1 Wireless Charger(Turbo Edition)
Model No.:	BS-W508
Test Model No.:	BS-W508
Brand Name:	Baseus
Hardware Version:	N/A
Software Version:	N/A
EUT Power Supply:	Input :Type-C 9V/2A, 12V/2A

3.3 Product Specification subjective to this standard

Equipment Category:	Non-ISM frequency
Operation Frequency range:	110kHz~205kHz
Modulation Type:	Induction
Antenna Type:	Induction coil
Antenna Gain:	0dBi

Note:

1. In section 15.31(m), regards to the operating frequency range less 1 MHz.

3.4 Test Environment

Operating Environment:	
Temperature:	25.5°C
Humidity:	53 % RH
Atmospheric Pressure:	1009mbar
Test Mode:	
Mode a:	Wireless output Mode at TWS 2.5W
Mode b:	Wireless output Mode at 5W
Mode c:	Wireless output Mode at 7.5W
Mode d:	Wireless output Mode at 10W
Mode e:	Wireless Total output Mode at 10W + 10W

3.5 Description of Support Units

The EUT has been tested with associated equipment below.

1) Support equipment

Description	Manufacturer	Model No.	Certification	Supplied by
Adapter	HUAWEI	LPL-C010050200Z	DOC	CQA

2) Cable

Cable No.	Description	Manufacturer	Cable Type/Length	Supplied by
/	/	/	/	/

3.6 Test Location

Shenzhen Huaxia Testing Technology Co., Ltd,

1F., Block A of Tongsheng Technology Building, Huahui Road, Dalang Street, Longhua District, Shenzhen, China

3.7 Test Facility

• **A2LA (Certificate No. 4742.01)**

Shenzhen Huaxia Testing Technology Co., Ltd., Shenzhen EMC Laboratory is accredited by the American Association for Laboratory Accreditation(A2LA). Certificate No. 4742.01.

• **FCC Registration No.: 522263**

Shenzhen Huaxia Testing Technology Co., Ltd., Shenzhen EMC Laboratory has been registered and fully described in a report filed with the (FCC) Federal Communications Commission. The acceptance letter from the FCC is maintained in our files. Registration No.:522263

3.8 Equipment List

Test Equipment	Manufacturer	Model No.	Instrument No.	Calibration Date	Calibration Due Date
Broadband Field Meter	Narda Safety Test Solutions GmbH	NBM-520	SB9873	2020/10/18	2021/10/17
Magnetic field probe	HIOKI	3470	SB9058/04	2020/12/14	2021/12/13

4 RF Exposure Evaluation

4.1 RF Exposure Compliance Requirement

4.1.1 Limits

According to FCC Part1.1310: The criteria listed in the following table shall be used to evaluate the environment impact of human exposure to radio frequency (RF) radiation as specified in part1.1307(b)

TABLE 1—LIMITS FOR MAXIMUM PERMISSIBLE EXPOSURE (MPE)

Frequency range (MHz)	Electric field strength (V/m)	Magnetic field strength (A/m)	Power density (mW/cm ²)	Averaging time (minutes)
(A) Limits for Occupational/Controlled Exposures				
0.3–3.0	614	1.63	*(100)	6
3.0–30	1842/f	4.89/f	*(900/f ²)	6
30–300	61.4	0.163	1.0	6
300–1500	f/300	6
1500–100,000	5	6
(B) Limits for General Population/Uncontrolled Exposure				
0.3–1.34	614	1.63	*(100)	30
1.34–30	824/f	2.19/f	*(180/f ²)	30
30–300	27.5	0.073	0.2	30
300–1500	f/1500	30
1500–100,000	1.0	30

Note 1: f = frequency in MHz ; *Plane-wave equivalent power density

Note 2: For the applicable limit, see FCC 1.1310, 680106 D01 RF Exposure Wireless Charging Apps v03

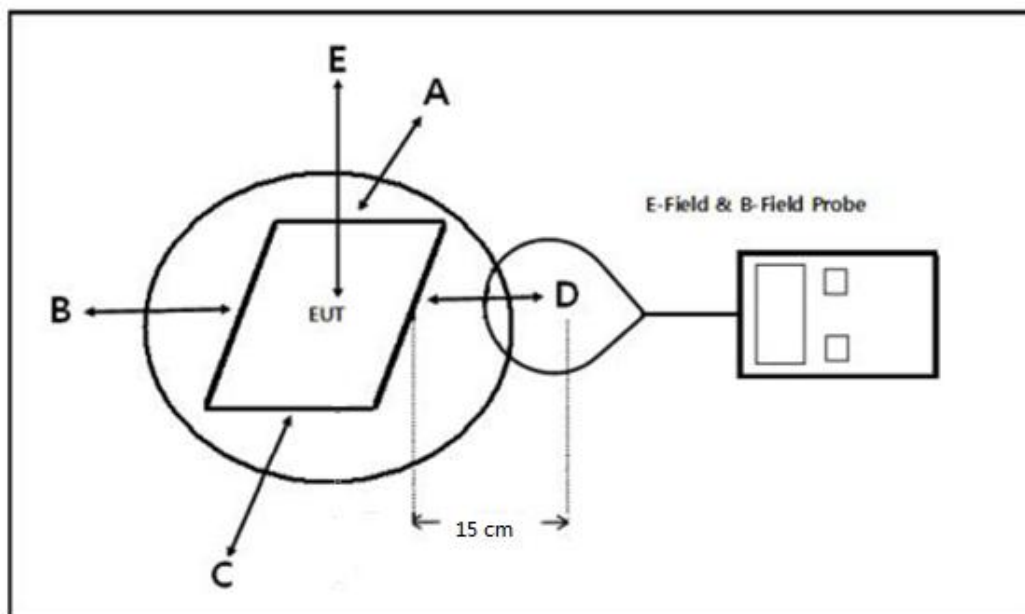
Note 3: Emissions between 100 kHz to 300 kHz should be assessed versus the limits at 300 kHz in Table 1 of Section 1.1310: 614 V/m and 1.63 A/m. A KDB inquiry is required to determine the applicable exposure limits below 100 kHz.

Note 4: The aggregate H-field strengths at 15 cm surrounding the device and 20 cm above the top surface from all simultaneous transmitting coils are demonstrated to be less than 50% of the MPE limit .

4.1.2 Test Procedure

For devices designed for typical desktop applications, such a wireless charging pads, RF exposure evaluation should be conducted assuming a user separation distance of 20 cm(Top) and 15cm(Edge). E and H field strength measurements or numerical modeling may be used to demonstrate compliance. Measurements should be made from all sides and the top of the primary/client pair, with the 20 cm(Top) and 15cm(Edge) measured from the center of the probe(s) to the edge of the device.

4.1.3 Test Setup



Note: Position A: Front of EUT; Position B: Left of EUT; Position C: back of EUT; Position D: Right of EUT; Position E: Top of EUT(20 cm measure distance);

4.1.4 Test Results

The EUT does comply with item 5 KDB680106 D01 v03.

(1) Power transfer frequency is less than 1 MHz.
(Conform)

(2) Output power from each primary coil is less than or equal to 15 watts.
(Conform)

(3) The transfer system includes only single primary and secondary coils. This includes charging systems that may have multiple primary coils and clients that are able to detect and allow coupling only between individual pairs of coils.
(Conform)

(4) Client device is placed directly in contact with the transmitter.
(Conform)

(5) Mobile exposure conditions only (portable exposure conditions are not covered by this exclusion).
(Conform)

(6) The aggregate H-field strengths at 15 cm surrounding the device and 20 cm above the top surface from all simultaneous transmitting coils are demonstrated to be less than 50% of the MPE limit.
(Conform)

Test condition: Mode d

E-field strength test result:

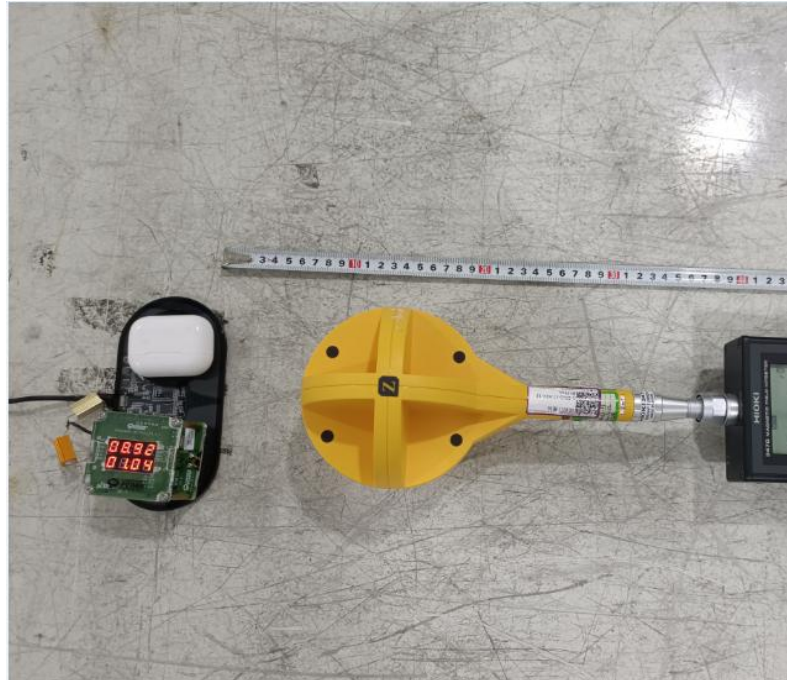
Frequency Range	Probe Position A (V/m)	Probe Position B (V/m)	Probe Position C (V/m)	Probe Position D (V/m)	Probe Position E (V/m)	Limit (V/m)
156.3kHz	2.87	1.98	1.54	1.39	1.98	614

H-field strength test result:

Frequency Range	Probe Position A (A/m)	Probe Position B (A/m)	Probe Position C (A/m)	Probe Position D (A/m)	Probe Position E (A/m)	Limit (A/m)
156.3kHz	0.45	0.52	0.35	0.36	0.40	1.63

APPENDIX A: PHOTOGRAPHS OF TEST SETUP

Test Model No.: BS-W508



----END OF REPORT----