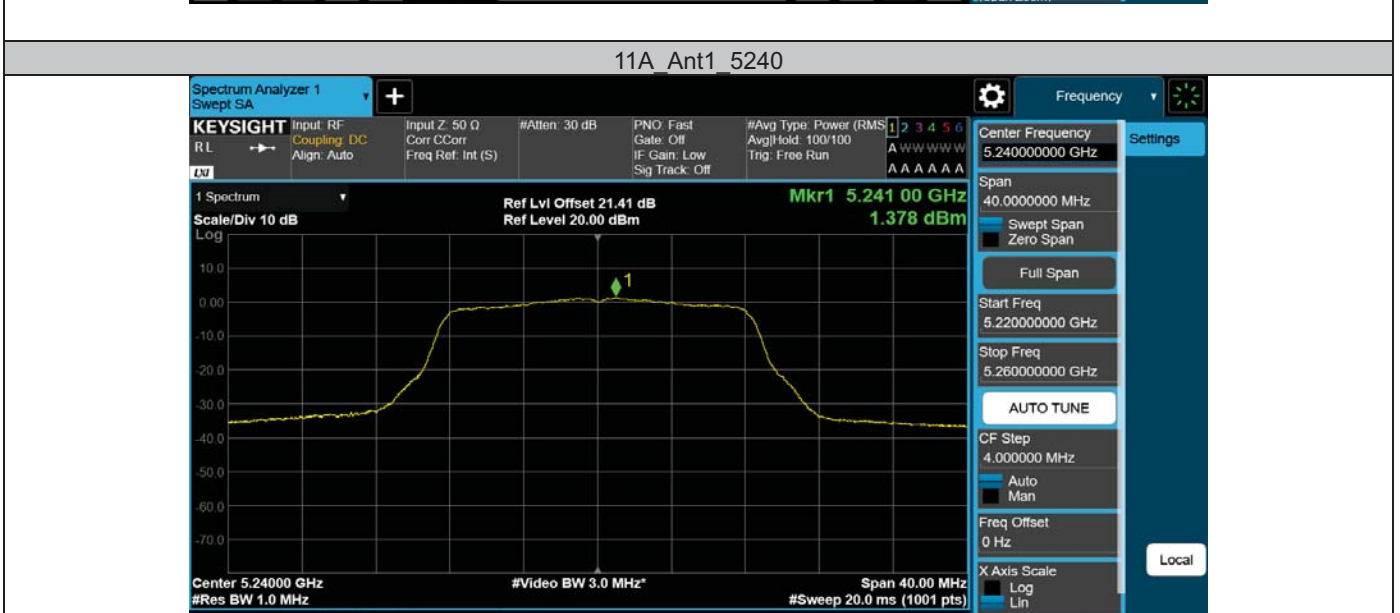


Test Graphs



11A Ant1 5260

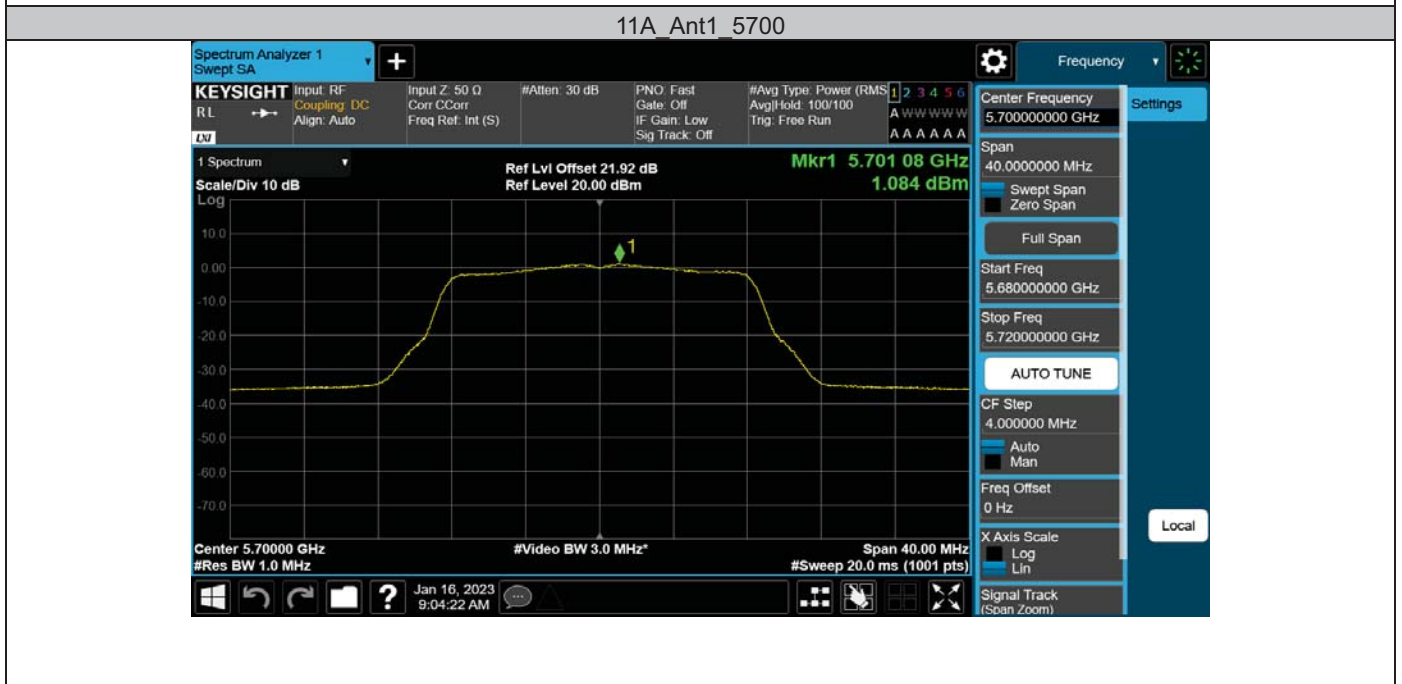
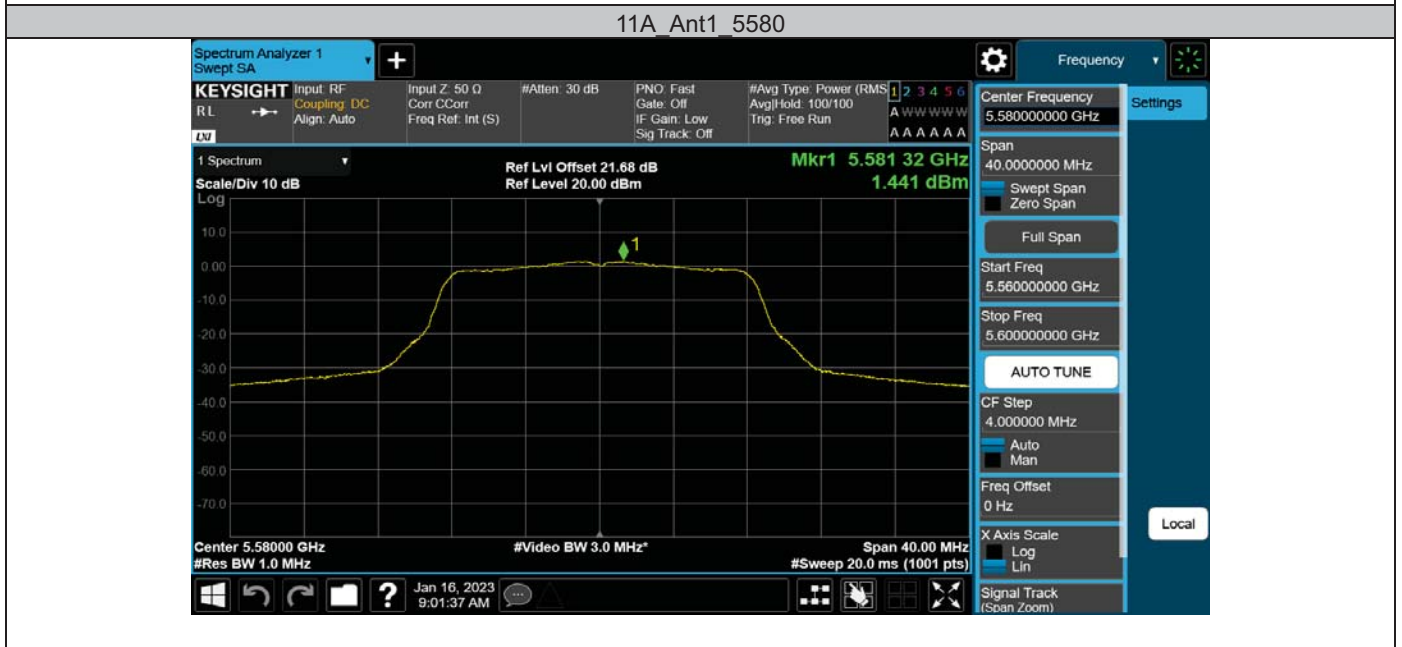
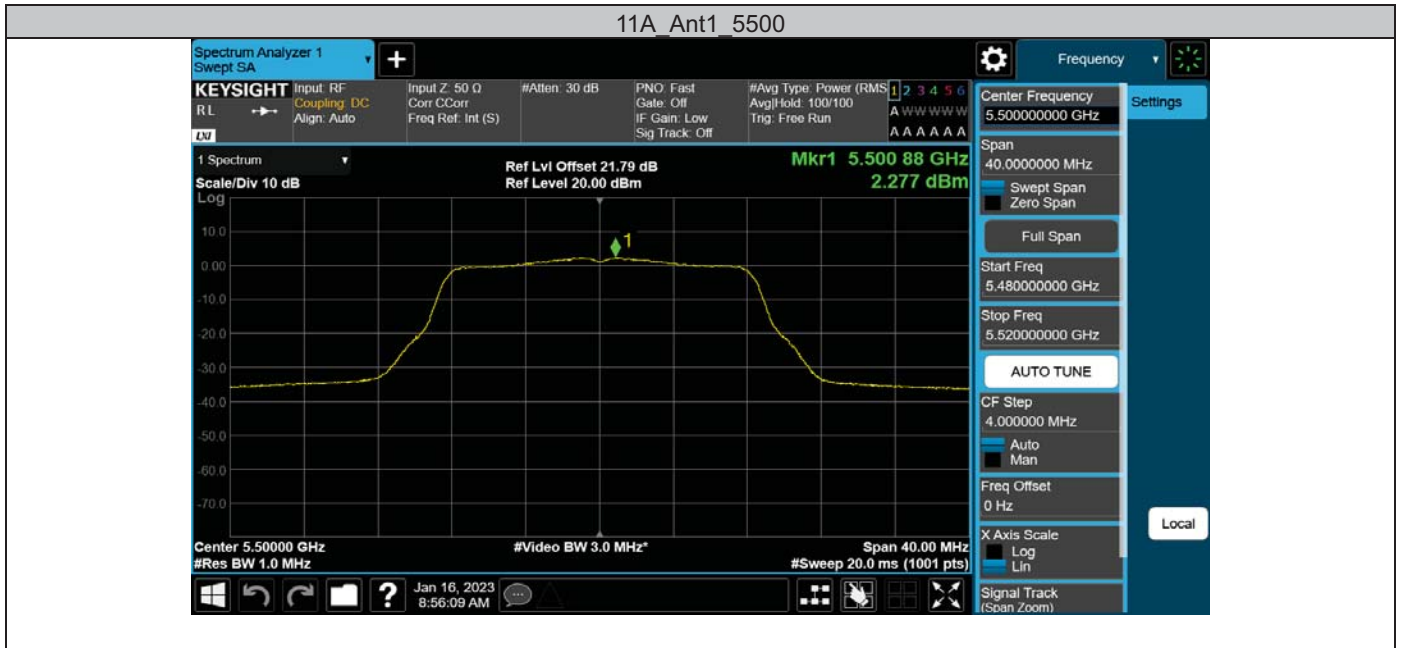


11A Ant1 5300



11A Ant1 5320

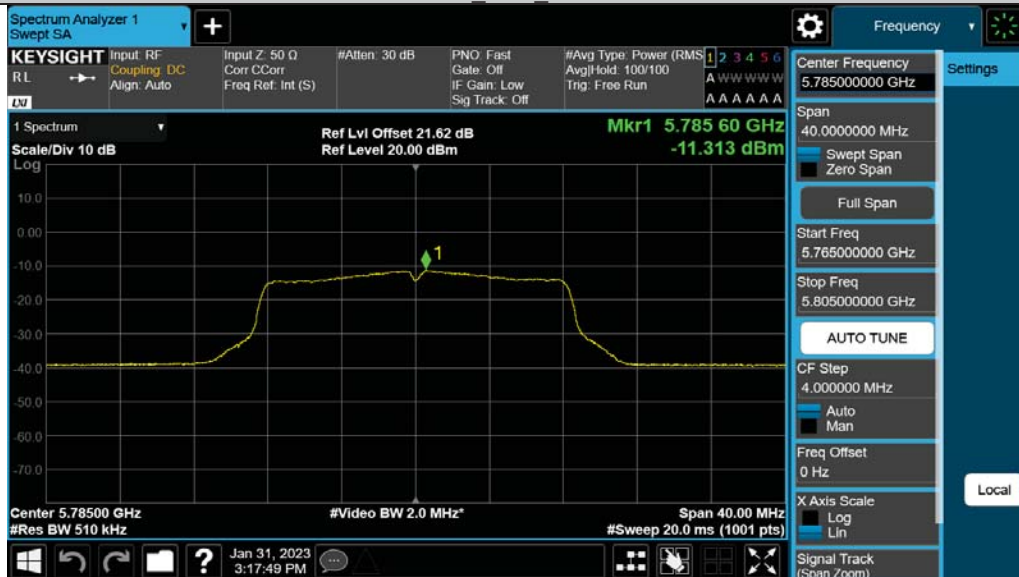




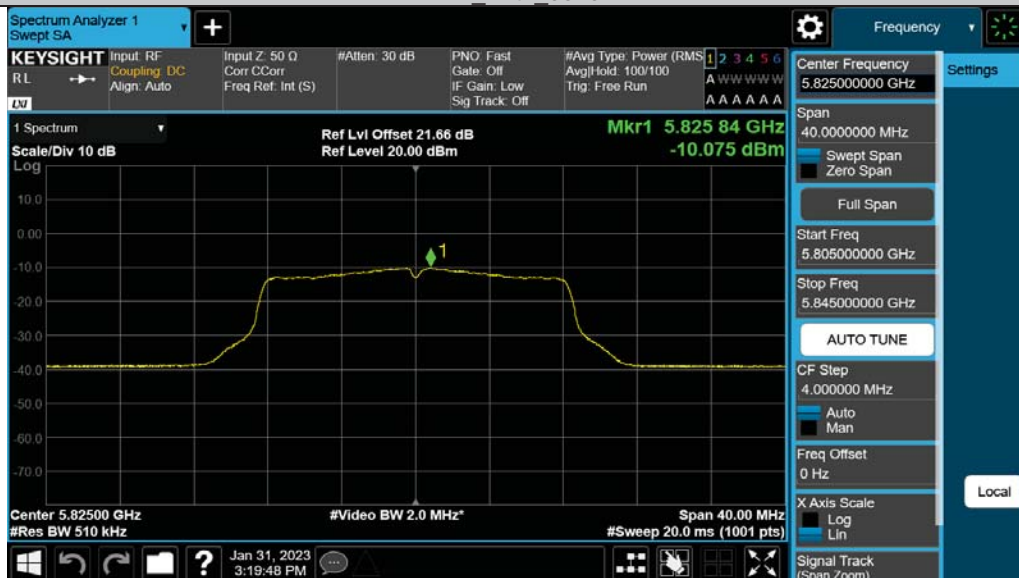
11A Ant1 5745



11A Ant1 5785



11A Ant1 5825



11N20SISO Ant1 5180



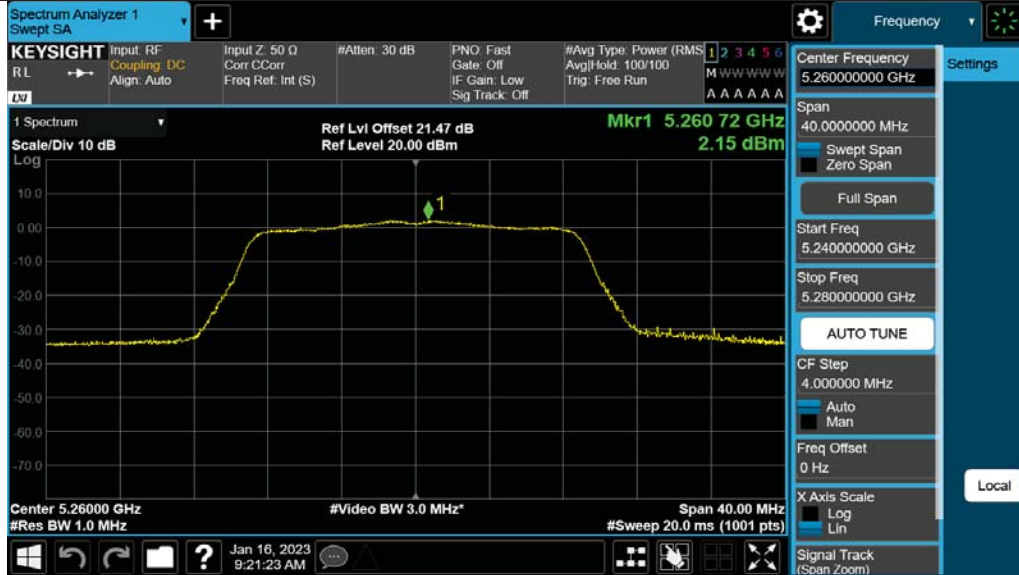
11N20SISO Ant1 5200



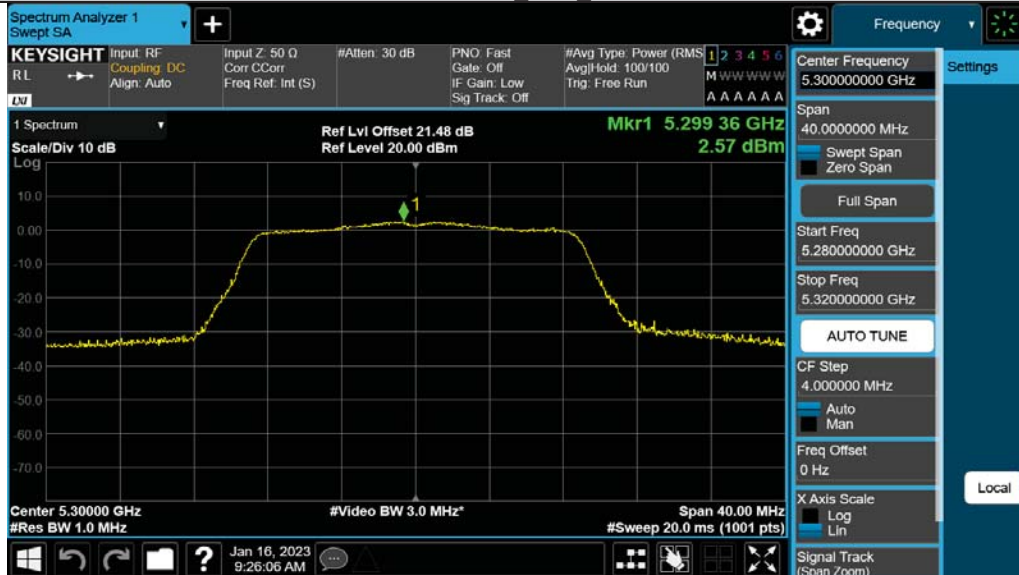
11N20SISO Ant1 5240



11N20SISO Ant1 5260

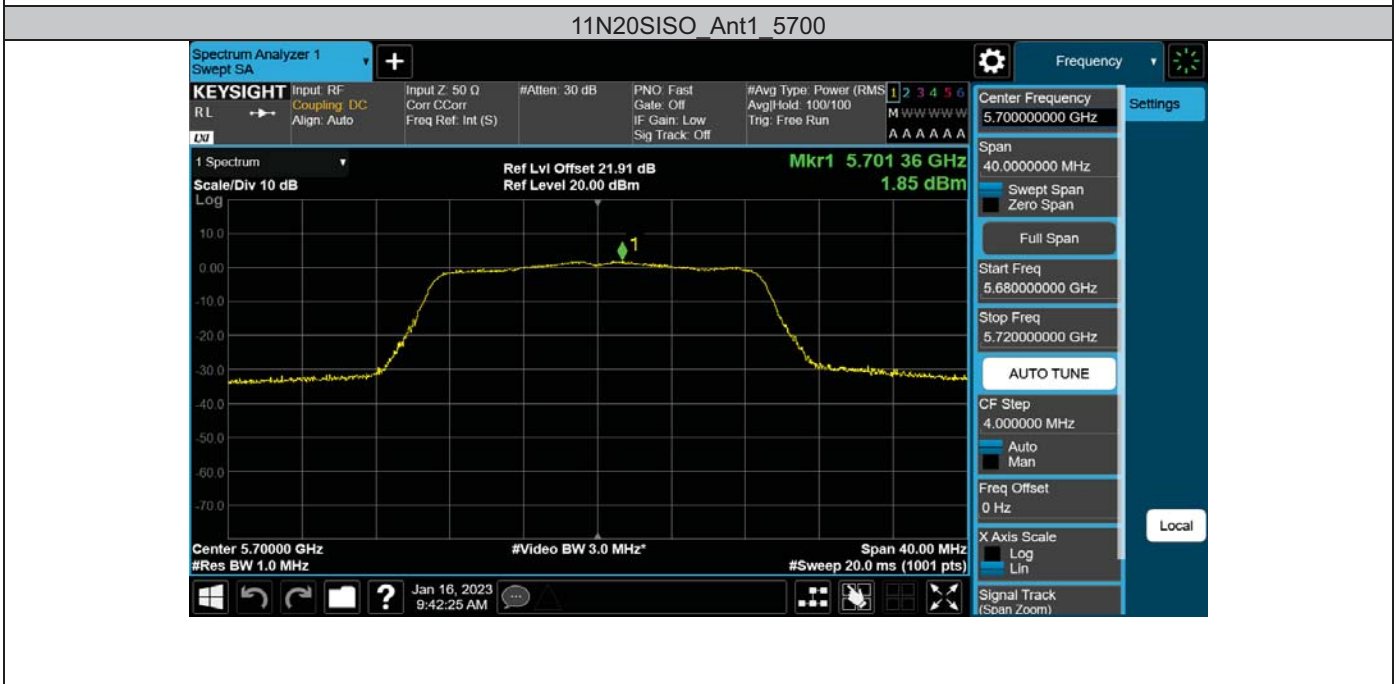
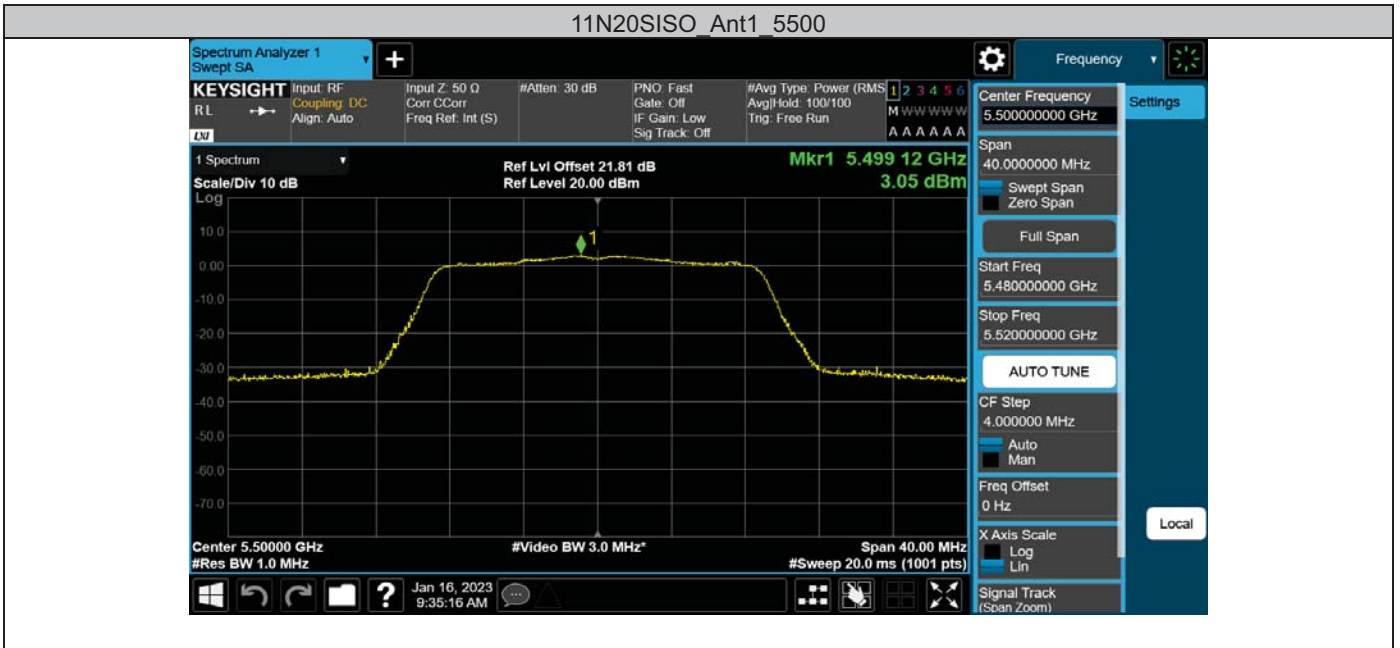


11N20SISO Ant1 5300

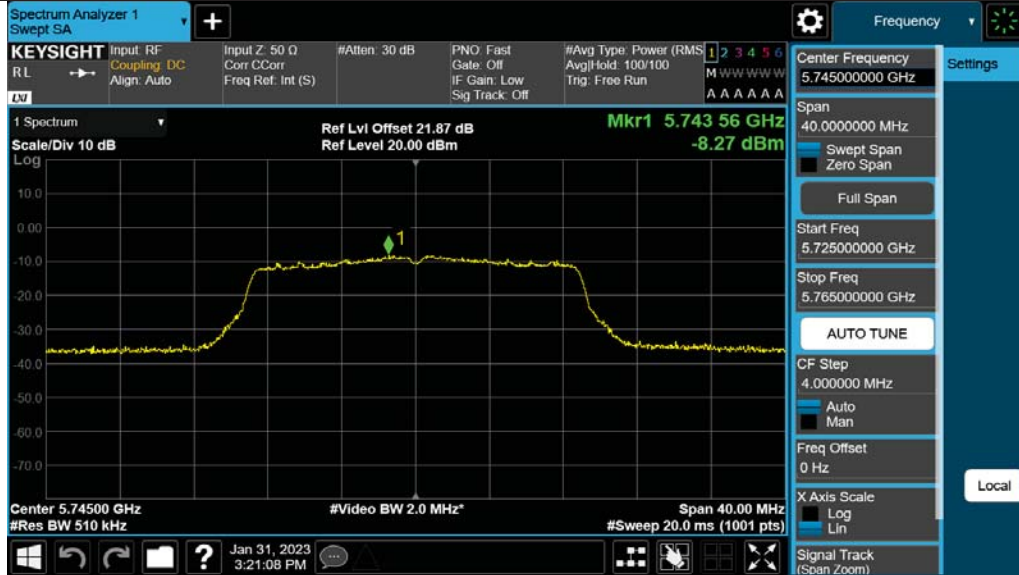


11N20SISO Ant1 5320





11N20SISO Ant1 5745



11N20SISO Ant1 5785



11N20SISO Ant1 5825



11N40SISO Ant1 5190



11N40SISO Ant1 5230



11N40SISO Ant1 5270



11N40SISO Ant1 5310



11N40SISO Ant1 5510



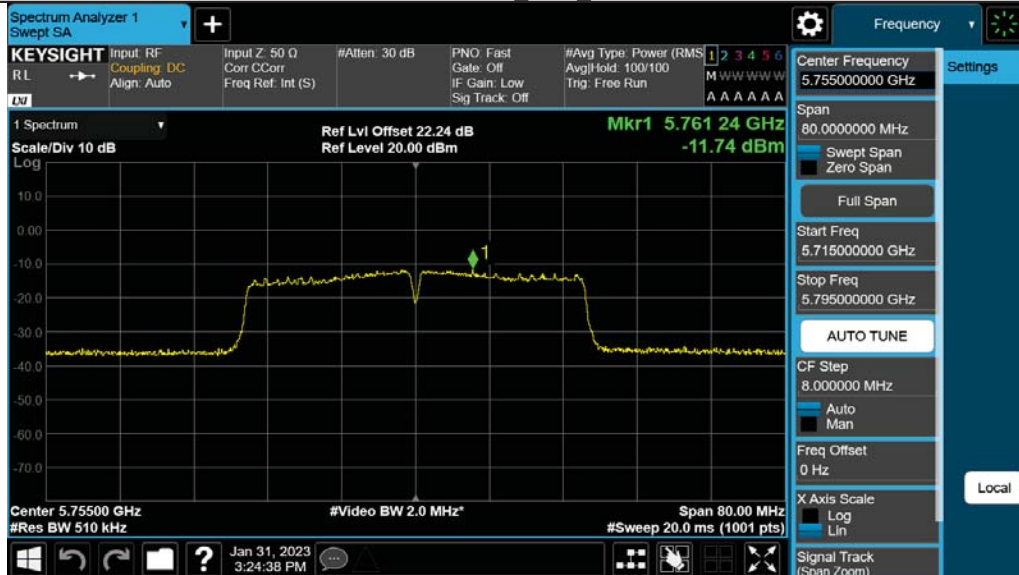
11N40SISO Ant1 5590



11N40SISO Ant1 5670



11N40SISO Ant1 5755



11N40SISO Ant1 5795



11AC20SISO Ant1 5180



11AC20SISO Ant1 5200



11AC20SISO Ant1 5240



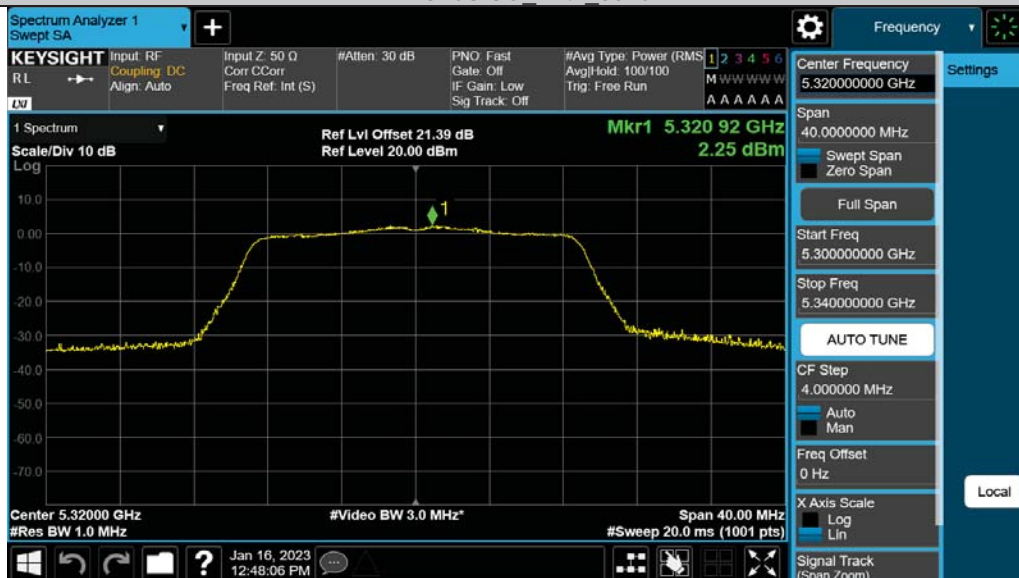
11AC20SISO Ant1 5260



11AC20SISO Ant1 5300



11AC20SISO Ant1 5320



11AC20SISO Ant1 5500



11AC20SISO Ant1 5580



11AC20SISO Ant1 5700



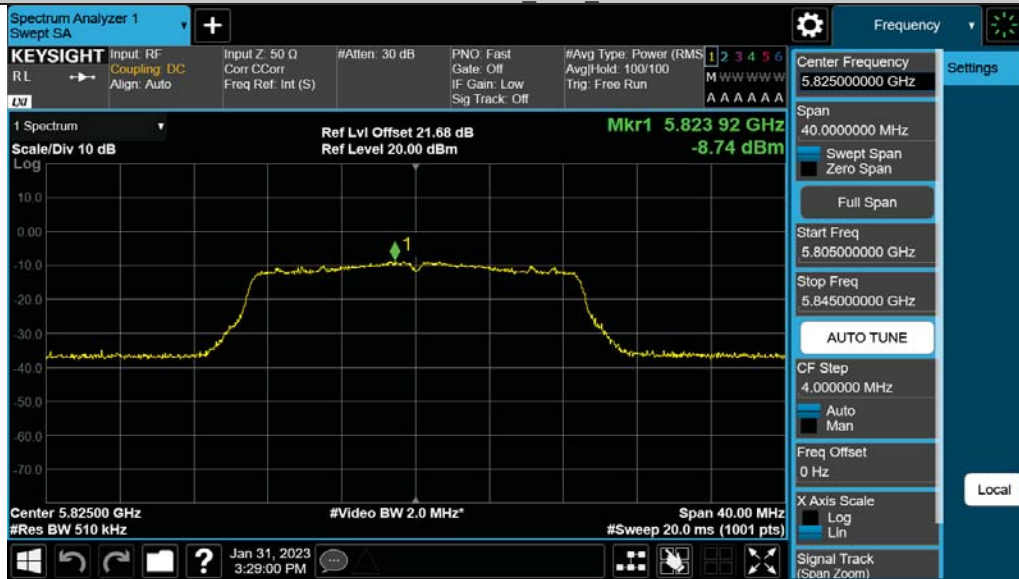
11AC20SISO Ant1 5745



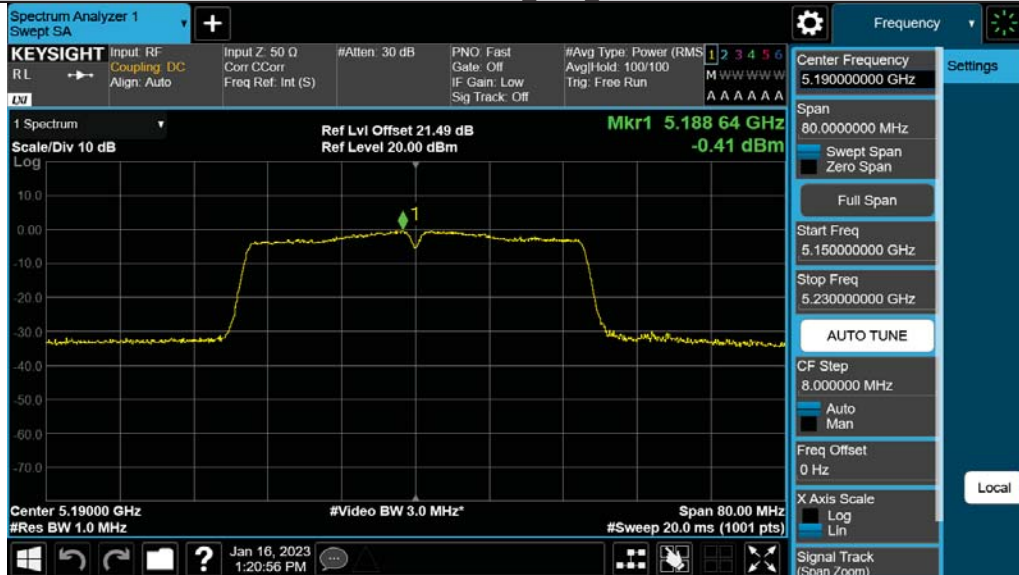
11AC20SISO Ant1 5785



11AC20SISO Ant1 5825



11AC40SISO Ant1 5190



11AC40SISO Ant1 5230



11AC40SISO Ant1 5270



11AC40SISO Ant1 5310



11AC40SISO Ant1 5510



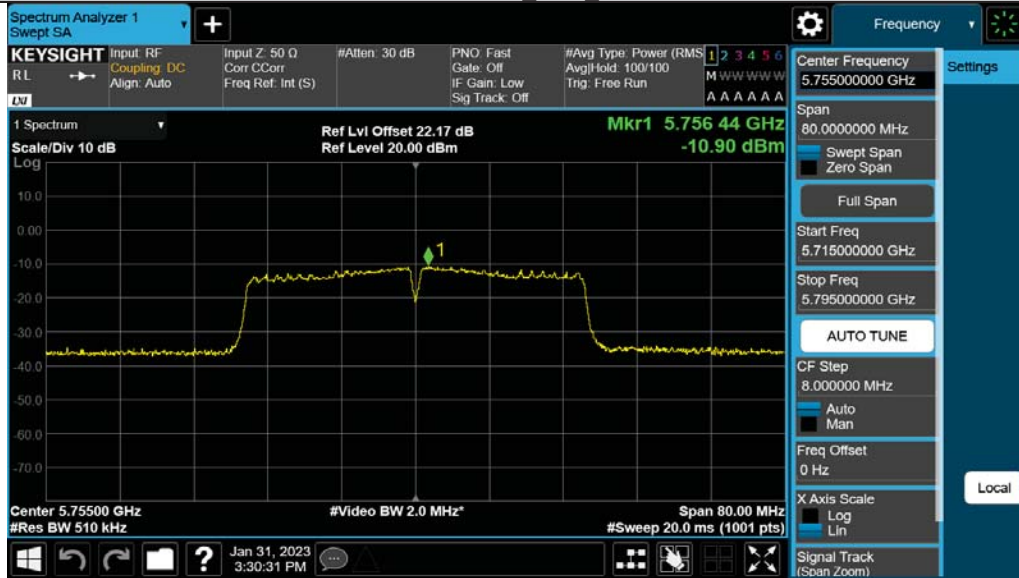
11AC40SISO Ant1 5590



11AC40SISO Ant1 5670



11AC40SISO Ant1 5755



11AC40SISO Ant1 5795



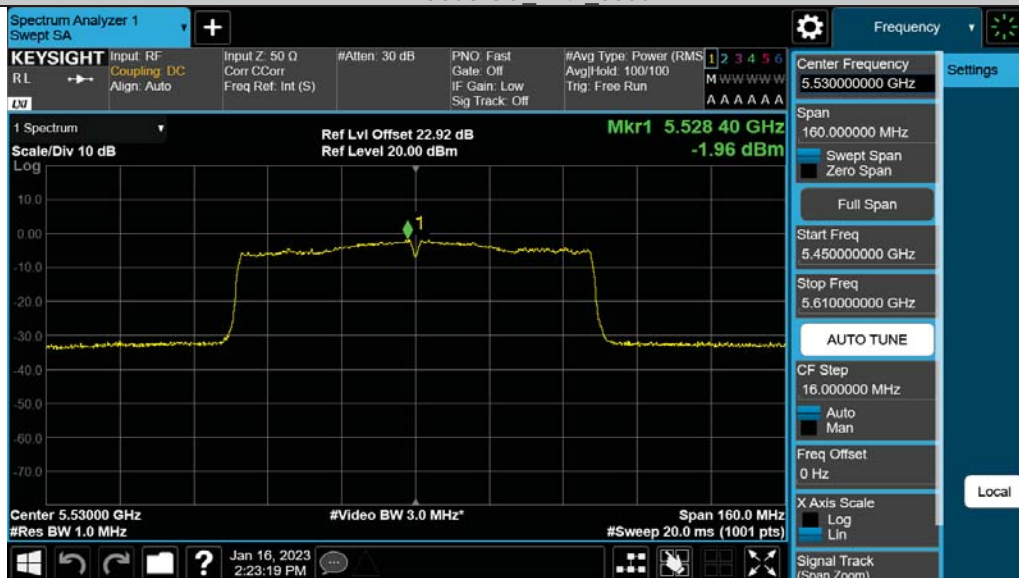
11AC80SISO Ant1 5210

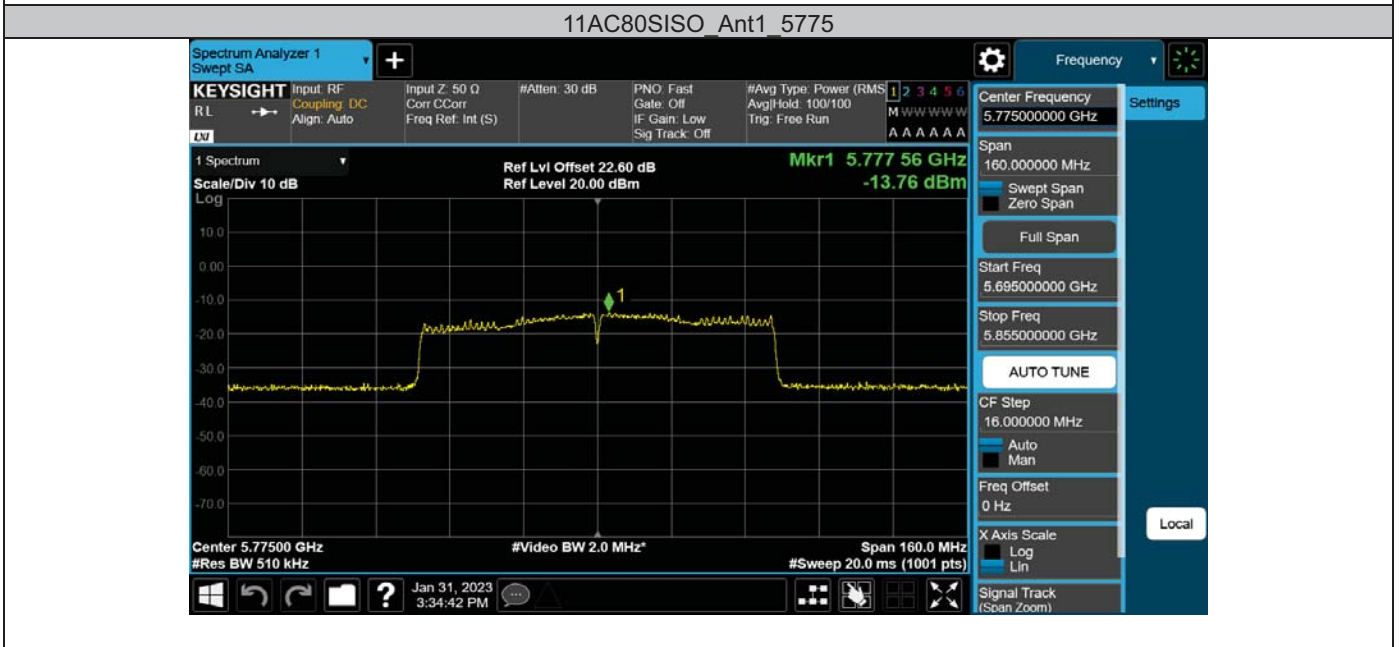
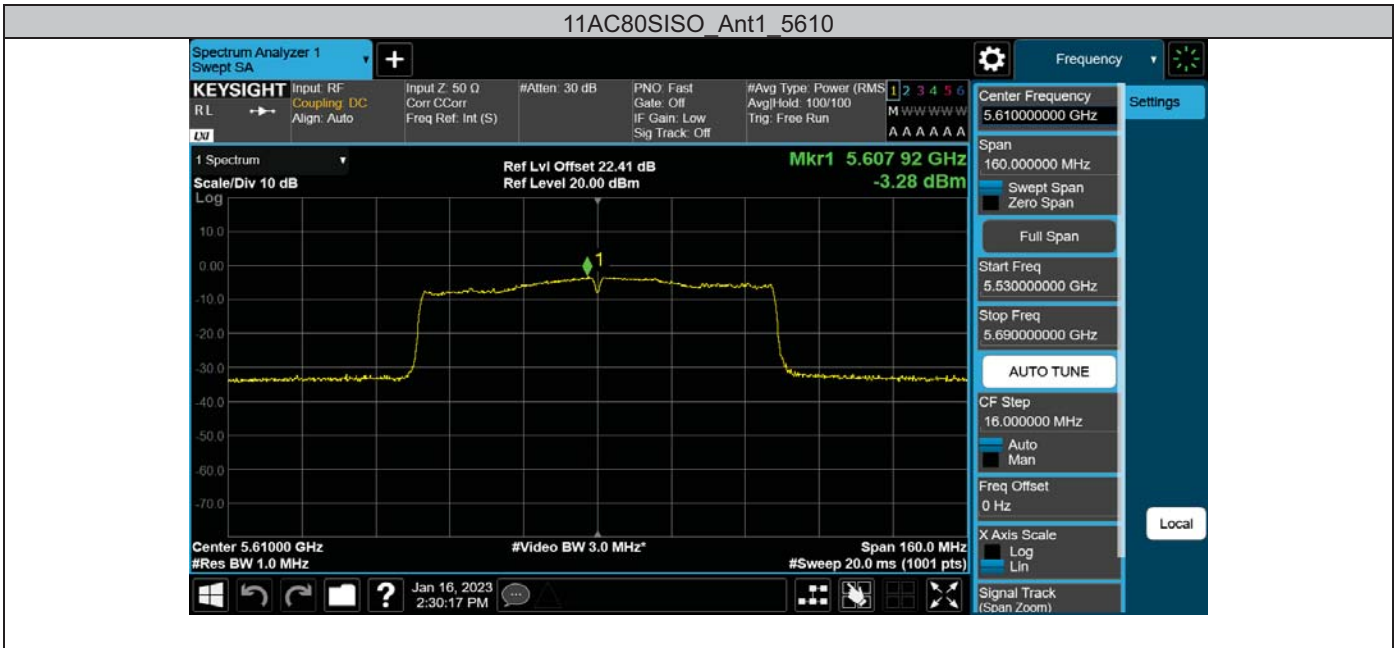


11AC80SISO Ant1 5290



11AC80SISO Ant1 5530



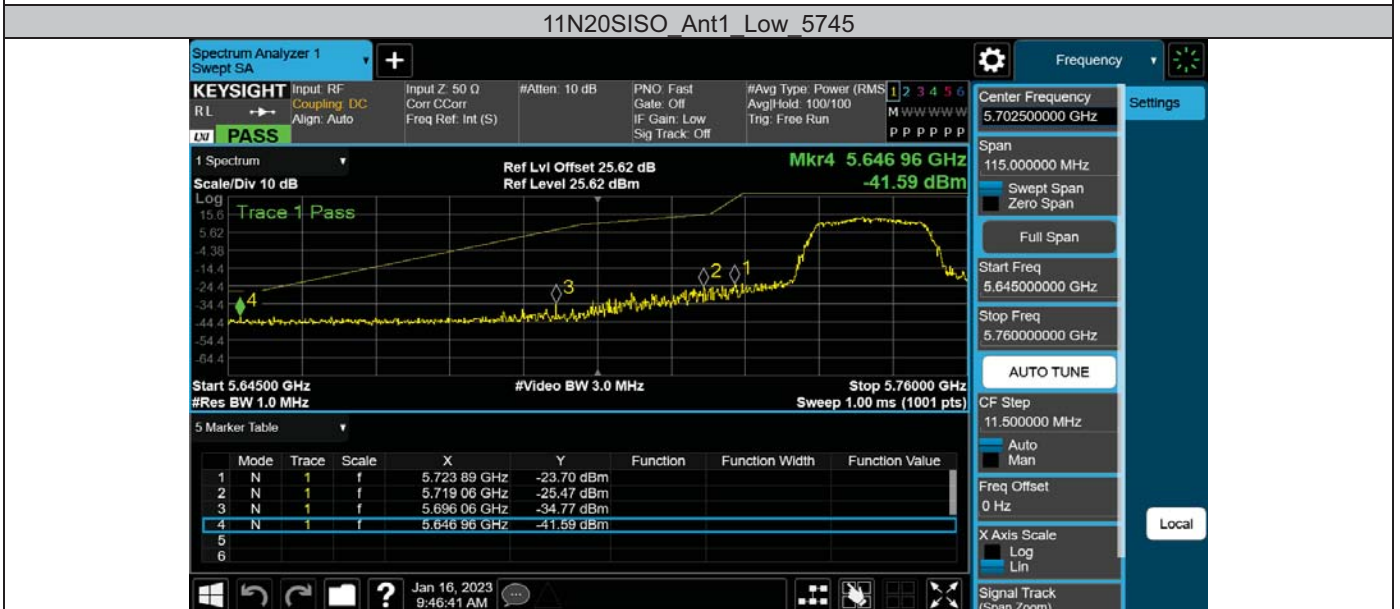
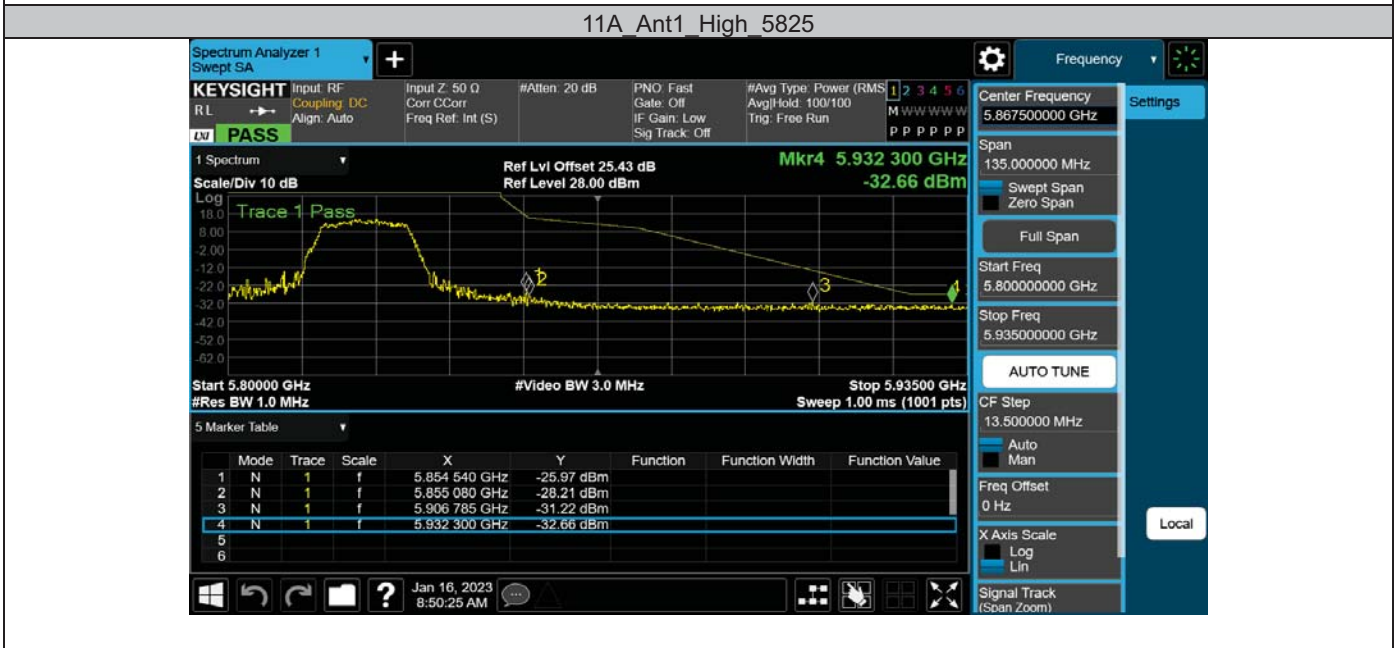
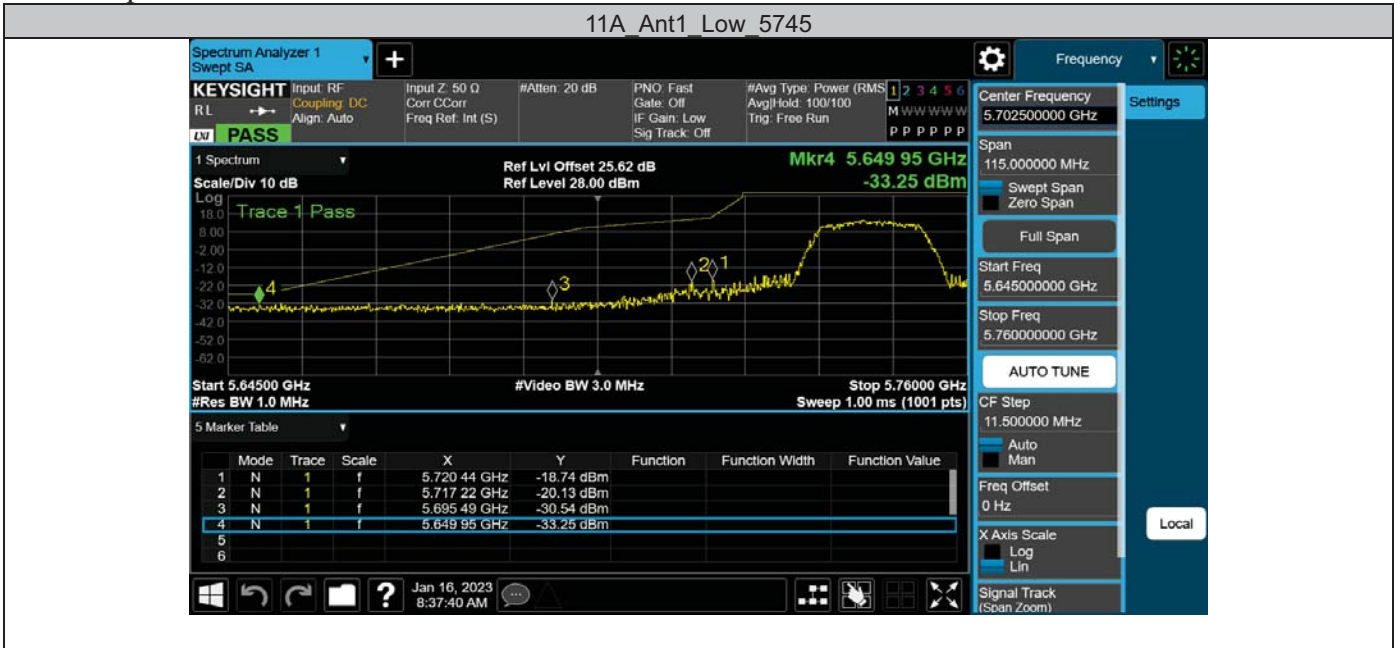


Appendix G: Band edge measurements

Test Result B4

Test Mode	Antenna	Ch Name	Frequency [MHz]	Freq Range [MHz]	Result [dBm]	Limit [dBm]	Verdict
11A	Ant1	Low	5745	5650~5700	-30.54	≤6.66	PASS
				5700~5720	-20.13	≤14.82	PASS
				5720~5725	-18.74	≤16.60	PASS
				5760~5650	-33.25	≤-27	PASS
		High	5825	5850~5855	-25.97	≤25.95	PASS
				5855~5875	-28.21	≤10.02	PASS
				5875~5925	-31.22	≤-3.48	PASS
11N20SISO	Ant1	Low	5745	5650~5700	-34.77	≤7.08	PASS
				5700~5720	-25.47	≤15.34	PASS
				5720~5725	-23.7	≤24.47	PASS
				5760~5650	-41.59	≤-27	PASS
		High	5825	5850~5855	-27.95	≤15.79	PASS
				5855~5875	-31.26	≤11.12	PASS
				5875~5925	-39.78	≤-12.87	PASS
11N40SISO	Ant1	Low	5755	5650~5700	-28.19	≤2.27	PASS
				5700~5720	-28.55	≤12.74	PASS
				5720~5725	-25	≤25.28	PASS
				5780~5650	-32.58	≤-27	PASS
		High	5795	5850~5855	-34.46	≤19.80	PASS
				5855~5875	-35.18	≤11.79	PASS
				5875~5925	-38.06	≤-26.80	PASS
11AC20SISO	Ant1	Low	5745	5650~5700	-34.82	≤9.55	PASS
				5700~5720	-25.03	≤15.34	PASS
				5720~5725	-24.48	≤22.90	PASS
				5760~5650	-42.04	≤-27	PASS
		High	5825	5850~5855	-27.26	≤16.10	PASS
				5855~5875	-29.86	≤10.21	PASS
				5875~5925	-40.19	≤-13.37	PASS
11AC40SISO	Ant1	Low	5755	5650~5700	-29.81	≤9.36	PASS
				5700~5720	-28.8	≤15.24	PASS
				5720~5725	-28.09	≤26.82	PASS
				5780~5650	-33.25	≤-27	PASS
		High	5795	5850~5855	-32.21	≤19.42	PASS
				5855~5875	-32.72	≤10.64	PASS
				5875~5925	-39.04	≤-22.04	PASS
11AC80SISO	Ant1	Low	5775	5925~5935	-40.76	≤-27	PASS
				5650~5700	-31.12	≤1.87	PASS
				5700~5720	-29.6	≤11.92	PASS
				5720~5725	-29.45	≤21.65	PASS
				5800~5650	-33.72	≤-27	PASS

Test Graphs B4



11N20SISO Ant1 High 5825



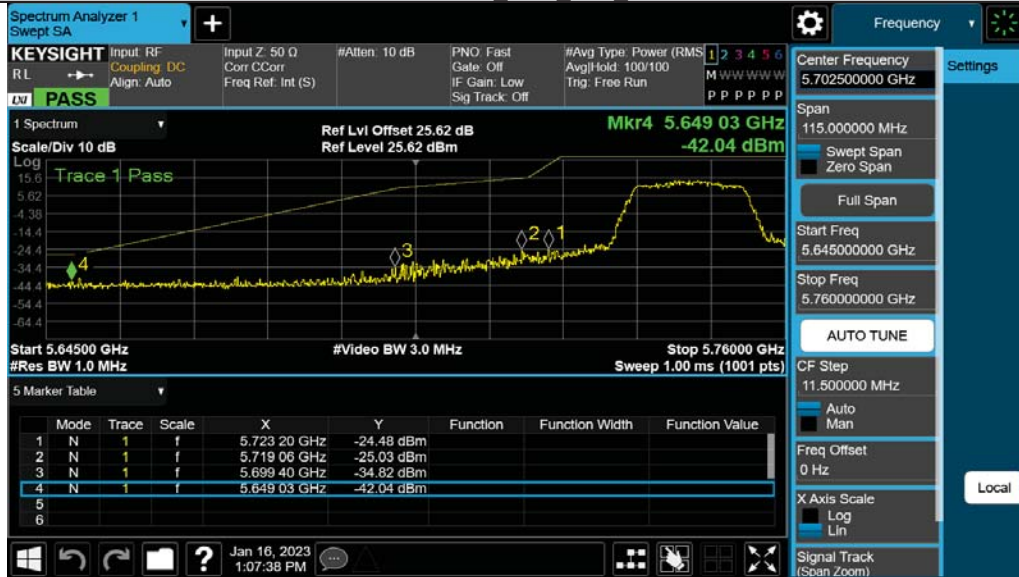
11N40SISO Ant1 Low 5755



11N40SISO Ant1 High 5795



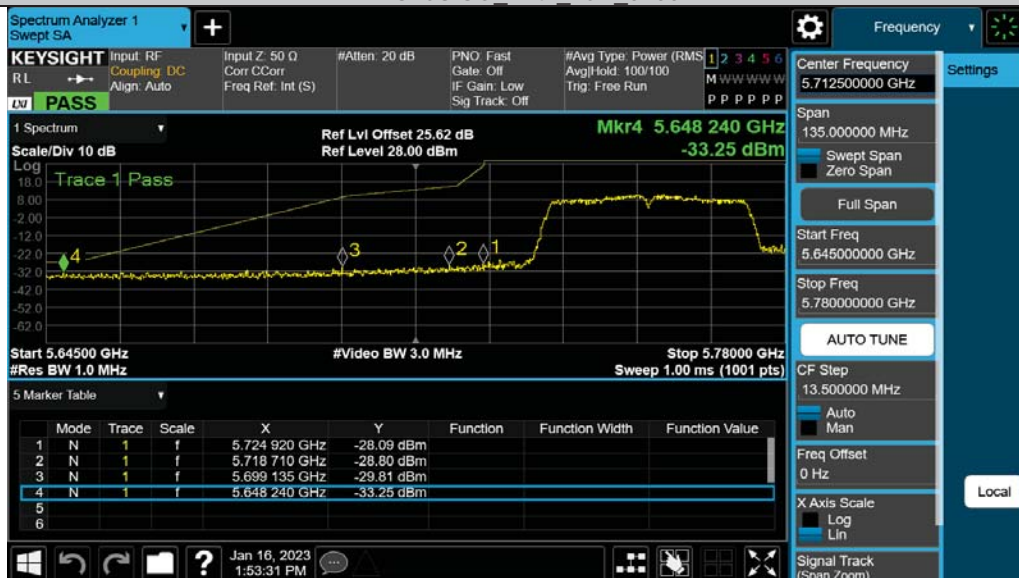
11AC20SISO Ant1 Low 5745



11AC20SISO Ant1 High 5825



11AC40SISO Ant1 Low 5755



11AC40SISO Ant1 High 5795



11AC80SISO Ant1 Low 5775



Appendix H: Frequency Stability
Test Result

Voltage								
Test Mode	Antenna	Frequency[M Hz]	Voltage [Vdc]	Temperature (°C)	Deviation (Hz)	Deviation (ppm)	Limit (ppm)	Verdict
11A	Ant1	5180	NV	NT	20000.00	3.861004	20	PASS
			LV	NT	40000.00	7.722008	20	PASS
			HV	NT	40000.00	7.722008	20	PASS
		5260	NV	NT	40000.00	7.604563	20	PASS
			LV	NT	40000.00	7.604563	20	PASS
			HV	NT	40000.00	7.604563	20	PASS
		5500	NV	NT	20000.00	3.636364	20	PASS
			LV	NT	20000.00	3.636364	20	PASS
			HV	NT	20000.00	3.636364	20	PASS
		5745	NV	NT	40000.00	6.962576	20	PASS
			LV	NT	40000.00	6.962576	20	PASS
			HV	NT	20000.00	3.481288	20	PASS

Temperature								
Test Mode	Antenna	Frequency[M Hz]	Voltage [Vdc]	Temperature (°C)	Deviation (Hz)	Deviation (ppm)	Limit (ppm)	Verdict
11A	Ant1	5180	NV	-30	20000.00	3.861004	20	PASS
			NV	-20	40000.00	7.722008	20	PASS
			NV	-10	40000.00	7.722008	20	PASS
			NV	0	40000.00	7.722008	20	PASS
			NV	10	20000.00	3.861004	20	PASS
			NV	20	40000.00	7.722008	20	PASS
			NV	30	40000.00	7.722008	20	PASS
			NV	40	40000.00	7.722008	20	PASS
			NV	50	40000.00	7.722008	20	PASS
		5260	NV	-30	40000.00	7.604563	20	PASS
			NV	-20	20000.00	3.802281	20	PASS
			NV	-10	20000.00	3.802281	20	PASS
			NV	0	40000.00	7.604563	20	PASS
			NV	10	20000.00	3.802281	20	PASS
			NV	20	40000.00	7.604563	20	PASS
			NV	30	20000.00	3.802281	20	PASS
			NV	40	40000.00	7.604563	20	PASS
			NV	50	20000.00	3.802281	20	PASS
		5500	NV	-30	40000.00	7.272727	20	PASS
			NV	-20	20000.00	3.636364	20	PASS
			NV	-10	20000.00	3.636364	20	PASS
			NV	0	20000.00	3.636364	20	PASS
			NV	10	40000.00	7.272727	20	PASS
			NV	20	20000.00	3.636364	20	PASS
			NV	30	40000.00	7.272727	20	PASS
			NV	40	40000.00	7.272727	20	PASS
			NV	50	40000.00	7.272727	20	PASS
		5745	NV	-30	40000.00	6.962576	20	PASS
			NV	-20	20000.00	3.481288	20	PASS
			NV	-10	40000.00	6.962576	20	PASS
			NV	0	40000.00	6.962576	20	PASS
			NV	10	40000.00	6.962576	20	PASS
			NV	20	20000.00	3.481288	20	PASS
			NV	30	40000.00	6.962576	20	PASS
			NV	40	40000.00	6.962576	20	PASS
			NV	50	20000.00	3.481288	20	PASS

11. TEST SETUP PHOTO

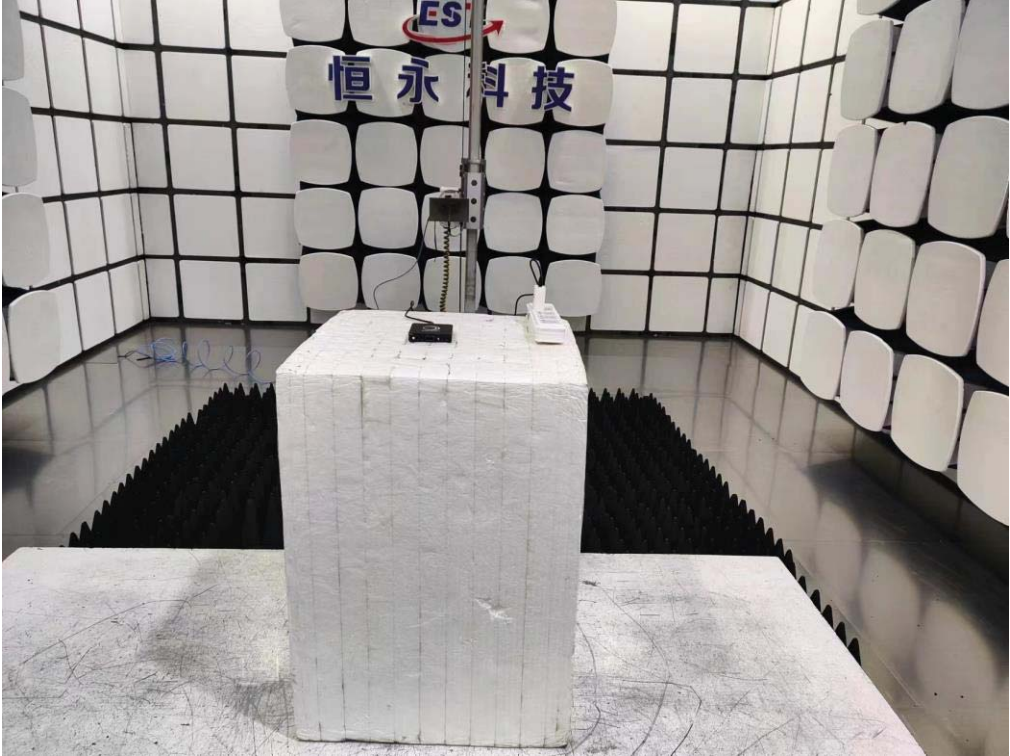
Conducted Test



Radiated Test (Below 1GHz)



Radiated Test (Above 1GHz)

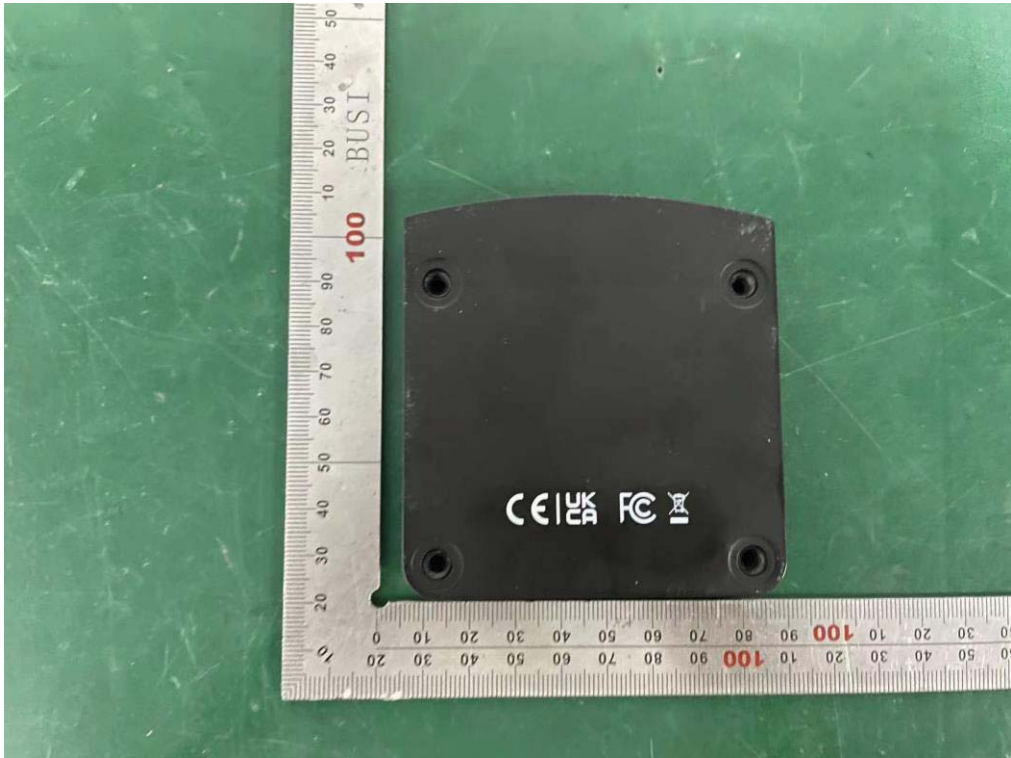


12. EUT PHOTO

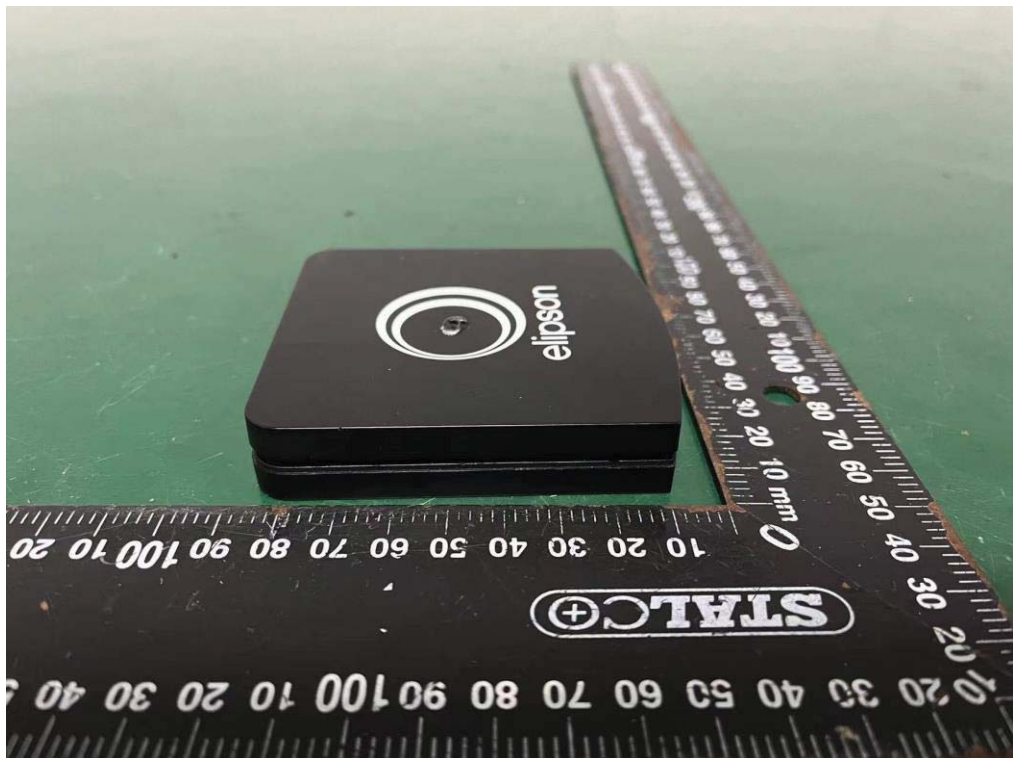
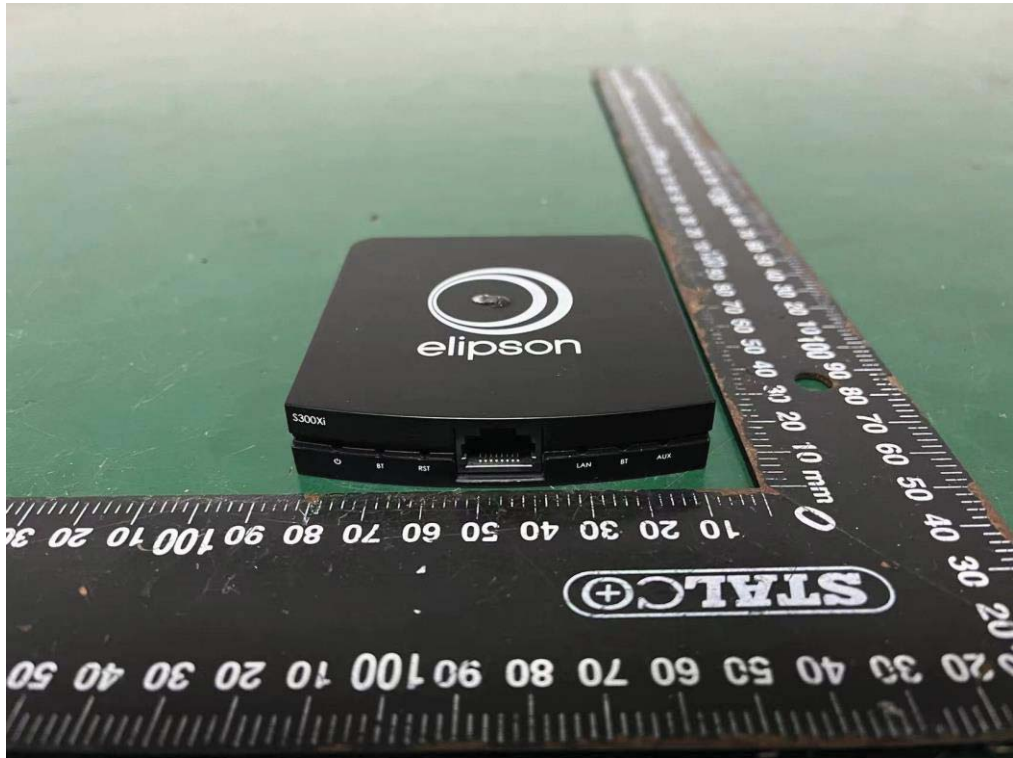
External Photos
M/N: Stream S300 Xi



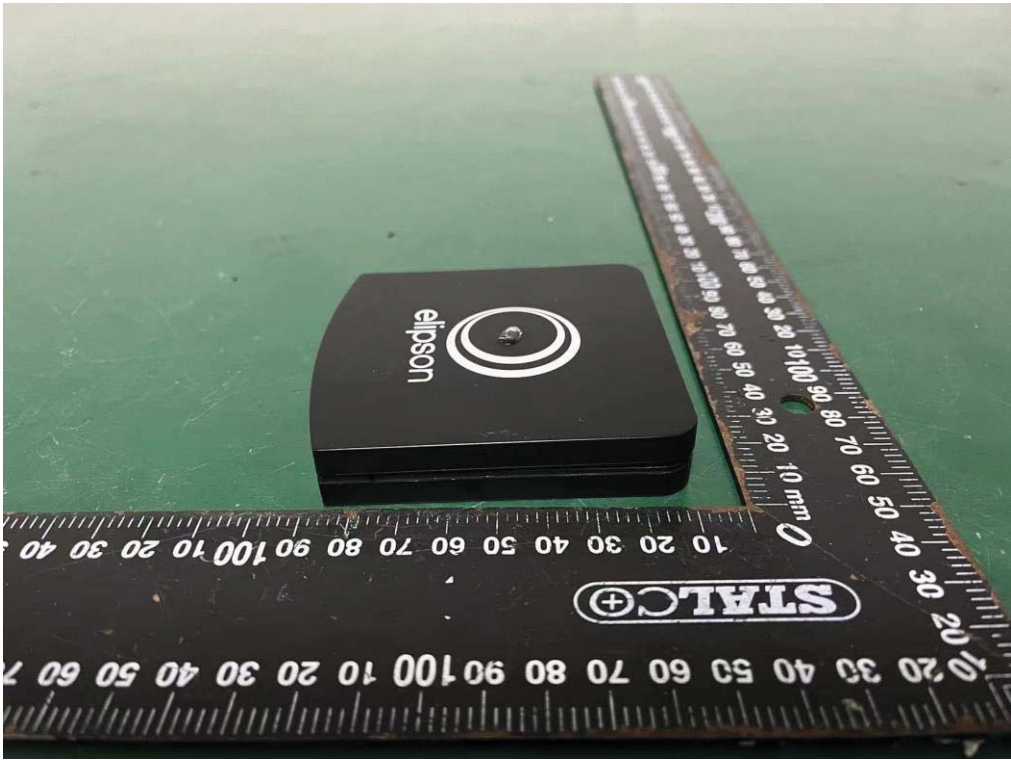
External Photos
M/N: Stream S300 Xi



External Photos
M/N: Stream S300 Xi



External Photos
M/N: Stream S300 Xi



Internal Photos
M/N: Stream S300 Xi



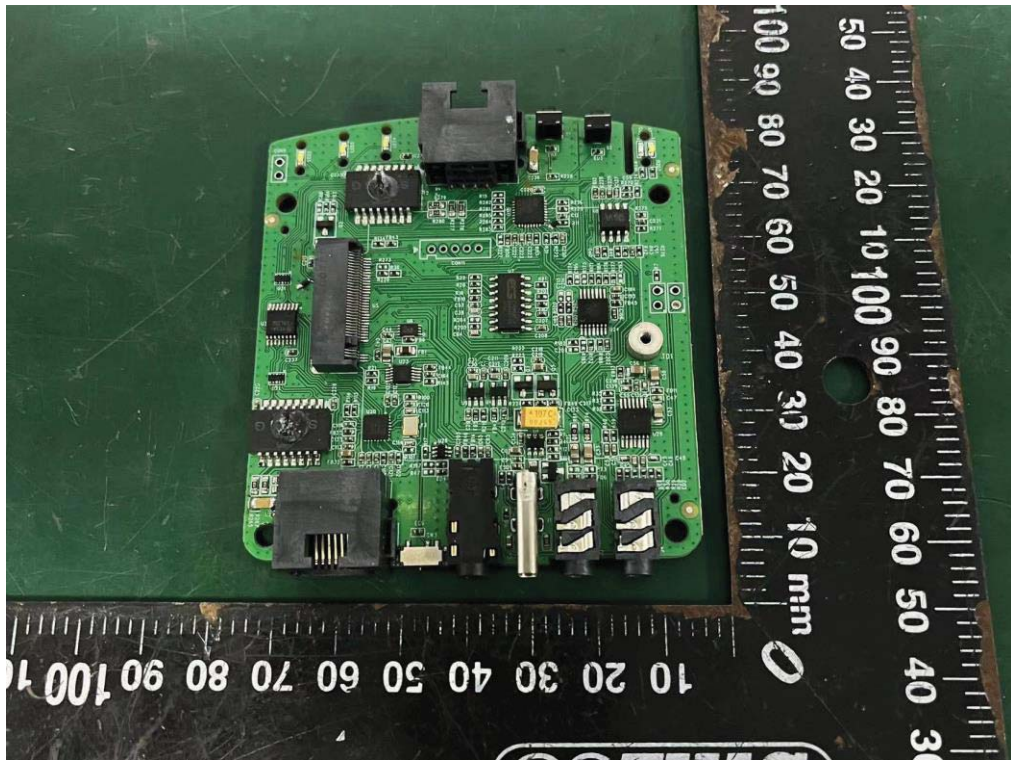
5G Wi-Fi
Antenna



Internal Photos
M/N: Stream S300 Xi



Internal Photos
M/N: Stream S300 Xi



Internal Photos
M/N: Stream S300 Xi



End of Test Report