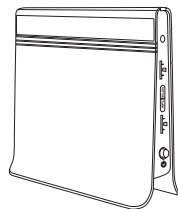


4G ROUTER

Beam Eagle

User manual



Power adapter input: AC 100-240V 0.6A

Router input power: DC 12V 1.5A

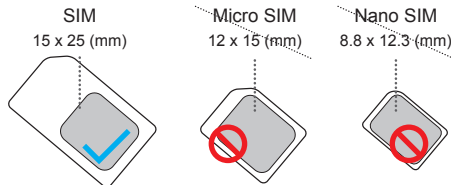
Battery: 3.7-4.2 V, 4800 mAh

Thanks for choosing our product, please read this instruction manual carefully before using, use the steps to operate this product. Keep it in safe place for future use after reading.

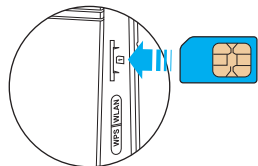
Insert SIM card and Connection method

1 Insert SIM card

According to the interface identification on the device, insert the SIM card, pay attention to the metal electric shock and the missing direction of the card.



Micro SIM or Nano SIM card needs to be restored by card sleeve to SIM to insert; otherwise it will not be ejected inside the card.



As shown in the pic, the SIM missing corner face inside, the metal chip faces the front of the device, inserts the slot, you can hear clatter and fasten it.

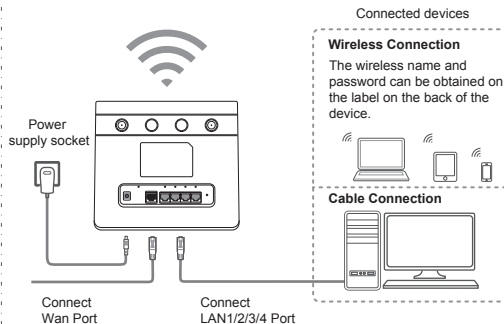
Please insert sim card and connect correctly

1: Insert SIM card on right position of router

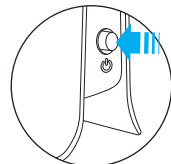
2: Power on power adapter and connect to router

3: Suggest using cell phone for configure settings, no need cable. If you want to use computer for configuration you need connect router lan port to computer, make sure connection is correct, computer use dynamic IP obtaining.

2 Plug power adapter if you do not want a wired connection, the cable is not necessary to be connected



After power on, press the product power on/off button to start the router.



As shown in pic, press the product power on/off button to start the router. Initialization may take time, please be patient.

After connecting the device, please check whether the router indicator is normal.

- Device power indicator light, light up after electricity
- Wireless status indicator WiFi enable (constant) data transmission (scintillation)
- The mobile data network indicator lights, according to the type of network used by the plug-in card, recognizes the card, and the corresponding 4G/3G indicator lights up.
- Data status indicator light, network connection success (flashing)

If the indicator is abnormal, please check whether the card is correct, whether the power is on and press power on/off button.

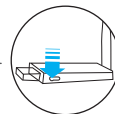
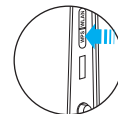
3 Use router wifi signal

Method one: Using WPS fast connection function

The WPS function means that the connection between wireless Internet devices can be quickly established. If you have wireless internet access equipment supporting WPS connection, you can refer to the following steps to connect; if the connection device does not have this function you can skip this step.

The following is an example of a USB network card, the wireless network can be quickly connected by the following ways:

Press the WPS button on the side of this device; enable wps function, the equipment corresponding to the indicator lights up.



Then press the WPS fast connection button on the network card for 2-3 seconds. For specific operation, please refer to the WPS connection of your equipment instructions.

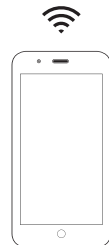
WPS function is just a fast connection way. Different wireless Internet devices may operate differently. It is recommended that you check the instructions of the device for understanding. If WPS match fails, it is recommended that you connect internet by wireless name and wireless password on the device label.

Method two: Using the WiFi name and password connection

Turn on your cell phone wifi and search wifi name BEAMX71-LongRange or BEAMX71-5G, input wifi password stating on the label of back router (Each product got certain SSID name and password, you can find these information on rating label), connected to wifi network.

2.4GHz BEAMX71-LongRange

5.8GHz BEAMX71-5G



Reminding:

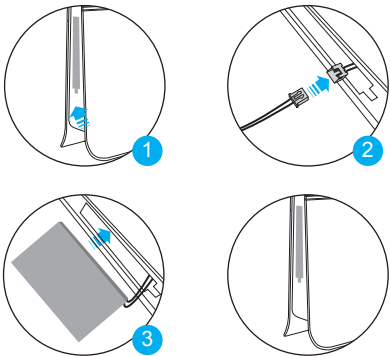
After router power on it will transmit default wifi BEAMX71-LongRange and BEAMX71-5G, cell phone just connect this wifi. If you did not find this wifi network please check SSID and password on label, or reset router. How to reset router please refer FAQ 1

Congratulations

You can use SIM data to surf internet now!

How to install the battery

- 1: Remove the battery cover.
- 2: Take out the connector of battery compartment then connect to the battery.
- 3: Put the battery in the battery compartment and close the cover.



Note: After the battery is connected, the battery indicator on the front of the device will display battery power. When the power adapter is not powered on, the battery power is used. The charging method of the battery is as follows: it starts to be charged, when DC power adapter is plugged, and stop charging after full charge.

How to enter management interface

- 1: Use the cell phone to connect the default WIFI signal transmitted by the router. See step 3 of insert and connection mode by using the router WiFi signal.



- 2: Scanning two-dimensional code, using mobile browser to open links or manually enter 192.168.188.1 in the browser address bar to enter management backstage.

- 3: In the background login page, enter the default account admin and password admin to enter the router management backstage interface.



Warm tips, you can use the computer to set up 1: Set up a computer to automatically get IP 2: Computer network interface connecting router LAN port 3: The address bar of the computer browser is entered into 192.168.188.1, opens the router management interface, and enters the default account and password to set it up. If you are not familiar with computer, use cell phone to set it up.



Answers to common questions

FAQ 1: Forgot username and password how to do? (How to reset the router?).

If you forget the username and password, or you can't do the backstage in the setup process, when the router is energized, press router's RESET key for 5-8 seconds and release, router make factory default.

FAQ 2: Can't find router's wifi signal?

The computer connects to the LAN port through the network cable, login in router management interface "Lan settings", wireless function enable / disable, confirms that this option is enabled. If you do not have a computer, you can reset the router. For details, see FAQ1.

FAQ 3: Enter 192.168.188.1 in the browser's address bar, can't open management page?

- 1: If the computer is set up, open the IE browser, click the tool - click the Internet option, click the connection - click the LAN settings to ensure that the proxy server does not tick.
- 2: If the computer is set up, please check the computer's wireless network configuration or local network configuration to ensure that the computer "automatically gets the IP address", "automatically gets the DNS server address", restarts the router, disconnects the router power, and then plug in the power supply later.
- 3: If you cannot login to the router management interface after completing the above operations, it is recommended that you reset the router and reset method see FAQ1.

FAQ 4: The router signal lights up, has data transmission, but the Internet is slow.

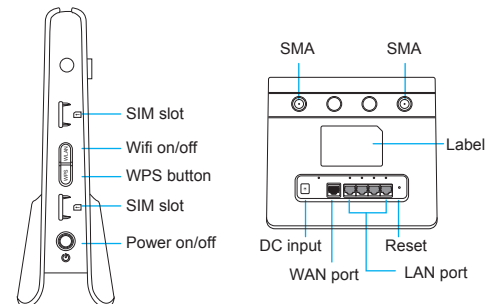
- 1: Please move the router to other locations, such as near the window, to ensure better reception of 4G signals.
- 2: Repower the router to reboot the router

FAQ 5: When the router changes the card during its operation, why can't the device read the SIM card?
SIM card hot plug is not supported by equipment, and the insertion and removal actions should be carried out under power failure. Please disconnect the power of the router and then plug in the power.

FAQ 6: Why can't you find pages when using mobile terminal settings?

Some phones may be able to intelligently detect whether the connected WIFI can access the Internet and may be disconnected during settings. You only need to look at the WIFI you are now connected to. If the connection is not the WIFI that the device launches, you only need to reconnect and refresh the page.

Device button description



FCC STATEMENT :

This device complies with Part 15 of the FCC Rules. Operation is subject to the following two conditions:

- (1) This device may not cause harmful interference, and
- (2) This device must accept any interference received, including interference that may cause undesired operation.

Warning: Changes or modifications not expressly approved by the party responsible for compliance could void the user's authority to operate the equipment.

NOTE: This equipment has been tested and found to comply with the limits for a Class B digital device, pursuant to Part 15 of the FCC Rules. These limits are designed to provide reasonable protection against harmful interference in a residential installation. This equipment generates uses and can radiate radio frequency energy and, if not installed and used in accordance with the instructions, may cause harmful interference to radio communications. However, there is no guarantee that interference will not occur in a particular installation. If this equipment does cause harmful interference to radio or television reception, which can be determined by turning the equipment off and on, the user is encouraged to try to correct the interference by one or more of the following measures:

- Reorient or relocate the receiving antenna.
- Increase the separation between the equipment and receiver.
- Connect the equipment into an outlet on a circuit different from that to which the receiver is connected.
- Consult the dealer or an experienced radio/TV technician for help.

FCC Radiation Exposure Statement:

This equipment complies with FCC radiation exposure limits set forth for an uncontrolled environment. This equipment should be installed and operated with minimum distance 20cm between the radiator & your body.