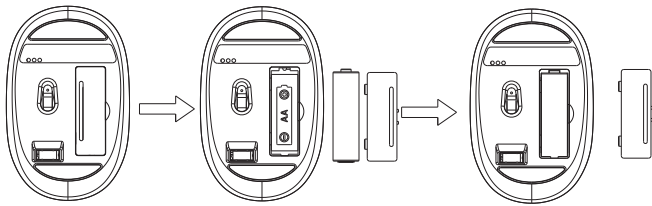


Installing the Batteries

The Bluetooth 4.0&2.4GHz Optical mouse use one AA alkaline batteries.

Installing Batteries in the Mouse

- Step 1. Open the battery compartment
Step 2.Insert the batteries as shown inside the battery compartment
Step 3.Replace the cover



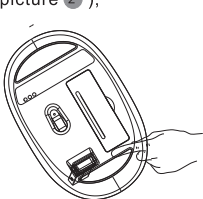
Mouse instructions :

- 1.1:⏻: ON/OFFswitch
1.2:⊙ : 2.4GHz/Bluetooth switch Button and Bluetooth ID key
Bluetooth mode to use:
1. Pay attention to the battery is on the cathode,
2. Open the ON/OFF switch.
3.press the Bluetooth switch Button switch to Bluetooth channel ,
4. Open the bluetooth search switch on bluetooth devices, search the bluetooth mouse
5. Long press the mouse button at the bottom of the ID, the bluetooth indicator light flash
6. Double-click the BT+2.4G Mouse icon on the bluetooth device
7. Can be used normally after the connection is successful

- 2.4GHz Mouse to use:
1.The receiver into the USB port on the computer interface
2. The mouse is equipped with batteries
3. The⊙ button to switch to 2.4G channel can be used

Obtain the receiver on the mouse

- 1.If you want to use the mouse,pls take out the receiver (shown in picture 1) and connect it to computer;
2.If you want to stop using the mouse, pls store the receiver onto the mouse (shown in picture 2);



1 Take out the receiver



2 Store the receiver

FCC Warning Statement

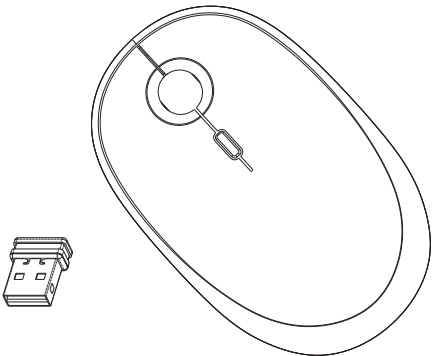
Changes or modifications not expressly approved by the party responsible for compliance could void the user's authority to operate the equipment.
This equipment has been tested and found to comply with the limits for a Class B digital device, pursuant to Part 15 of the FCC Rules. These limits are designed to provide reasonable protection against harmful interference in a residential installation.
This equipment generates uses and can radiate radio frequency energy and, if not installed and used in accordance with the instructions, may cause harmful interference to radio communications. However, there is no guarantee that interference will not occur in a particular installation. If this equipment does cause harmful interference to radio or television reception, which can be determined by turning the equipment off and on, the user is encouraged to try to correct the interference by one or more of the following measures: –Reorient or relocate the receiving antenna.
–Increase the separation between the equipment and receiver.
–Connect the equipment into an outlet on a circuit different from that to which the receiver is connected.
–Consult the dealer or an experienced radio/TV technician for help.
This device complies with part 15 of the FCC rules. Operation is subject to the following two conditions (1) this device may not cause harmful interference, and (2) this device must accept any interference received, including interference that may cause undesired operation.

Model : BT21-TMS-4E-TT

Subsidiary Model #: BT21-TMS-4E-CK / BT21-TMS-4E-CM / BT21-TMS-4E-SK/ BT21-TMS-4E-RJ / BT21-TMS-4E-MG / BT21-TMS-4E-KY

Instruction Manual

BT21 minini multi-pairing wireless mouse



CAUTION: To use this device properly, please read the user's guide before installation.

FCC ID: 2AXYZ-MININI-RMS