

SPECIFICATION

Shenzhen Strongpower Communication Co., Ltd

ShenzhenStrongpowerCommunicationCo., Ltd.

930 Bluetooth Aatenna

SPECIFICATION

Customer	TRANSSION	Frequency Band	2402MHz-2480MHz
Model	930		
Serial No		Color	
RF designer	Zou Lijun	Structural engineer	Zhou Jun
Technical director	Fu Yicheng	Date	2024/04/16

Confirm by customer:

INDEXES

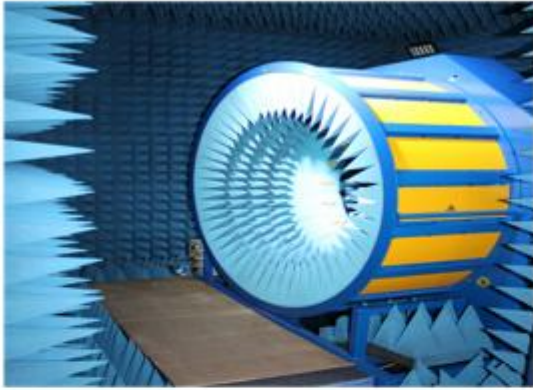
1. The equipment of Active&Passive test.....	3-4
2. Passive test..	5-6
2.1 S Parameters..	5
2.2 Passive Efficiency and Gain	5
2.3 Passive pattern.....	6
3.Active test..	6-8
3.1 TRP&TIS test.....	6
3.2 Active pattern.....	7-8
4.Matching Circuit.....	9
5.Environmental treatment.....	10

Confidentiality requirements

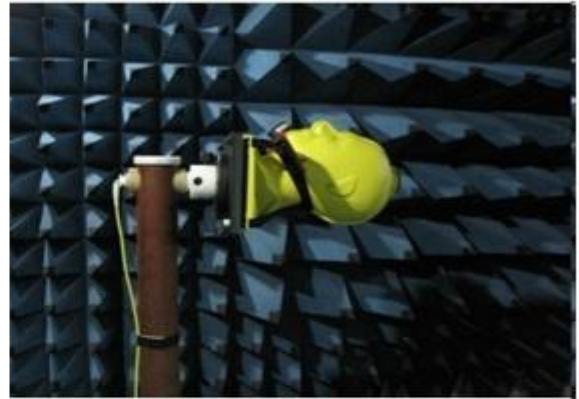
Strongpower Communication Co., Ltd. has the information provided by proprietary technology, which shall be kept strictly confidential and shall not be disclosed to any person or company without the prior written consent of Strongpower Communication Technology Co., Ltd.

1. The Equipment of Active&Passive Test

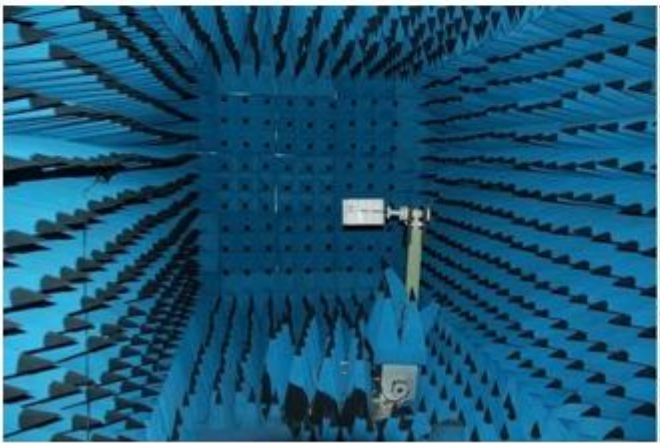
chamber



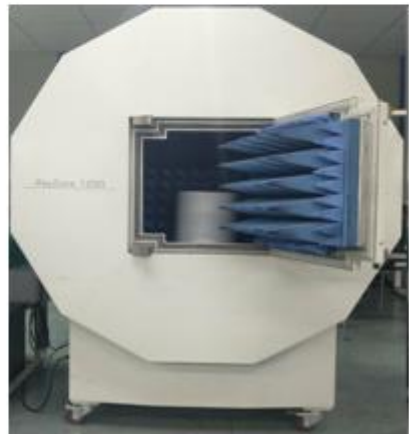
Satimo



Airlink



Guang Ping

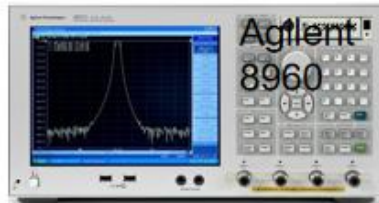


GTS

Confidentiality requirements

Strongpower Communication Co., Ltd. has the information provided by proprietary technology, which shall be kept strictly confidential and shall not be disclosed to any person or company without the prior written consent of Strongpower Communication Technology Co., Ltd.

equipment

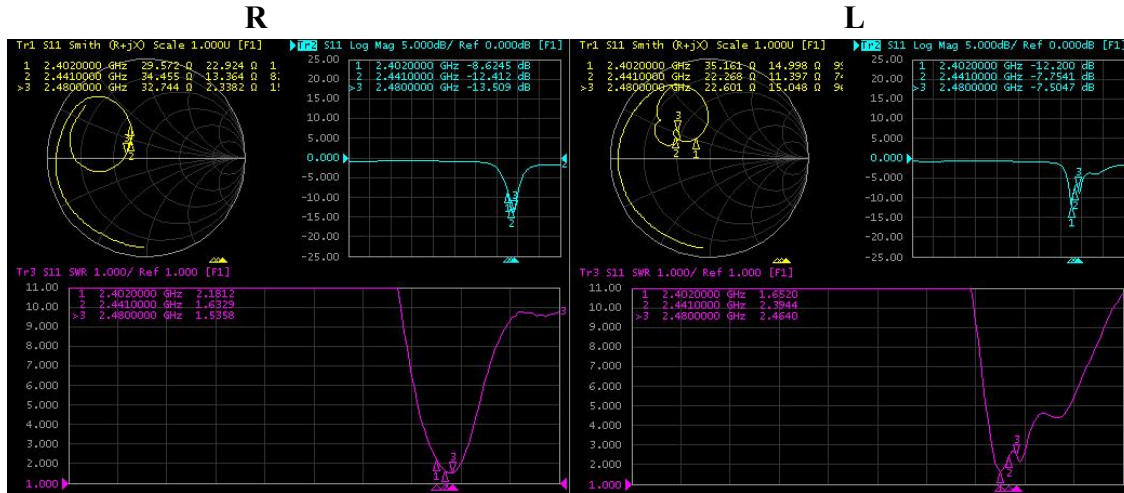


Confidentiality requirements

Strongpower Communication Co., Ltd. has the information provided by proprietary technology, which shall be kept strictly confidential and shall not be disclosed to any person or company without the prior written consent of Strongpower Communication Technology Co., Ltd.

2. Passive Test

2.1 S Parameters, VSWR, Return loss, Smith Chart



2.2 Passive Efficiency and Gain

R

Frequency (MHz)	Efficiency%	Efficiency (dB)	Gain (dBi)
2400	21.04%	-6.77	-2.63
2410	21.79%	-6.62	-2.55
2420	21.80%	-6.62	-2.67
2430	22.54%	-6.47	-2.58
2440	22.29%	-6.52	-2.76
2450	22.88%	-6.41	-2.45
2460	22.85%	-6.41	-1.99
2470	22.63%	-6.45	-1.97
2480	22.69%	-6.44	-1.77

L

Frequency (MHz)	Efficiency %	Efficiency (dB)	Gain (dBi)
2400	26.38%	-5.79	-1.55
2410	26.97%	-5.69	-1.59
2420	25.57%	-5.92	-1.61
2430	24.93%	-6.03	-1.85
2440	23.02%	-6.38	-2.35
2450	21.59%	-6.66	-2.76

Confidentiality requirements

Strongpower Communication Co., Ltd. has the information provided by proprietary technology, which shall be kept strictly confidential and shall not be disclosed to any person or company without the prior written consent of Strongpower Communication Technology Co., Ltd.

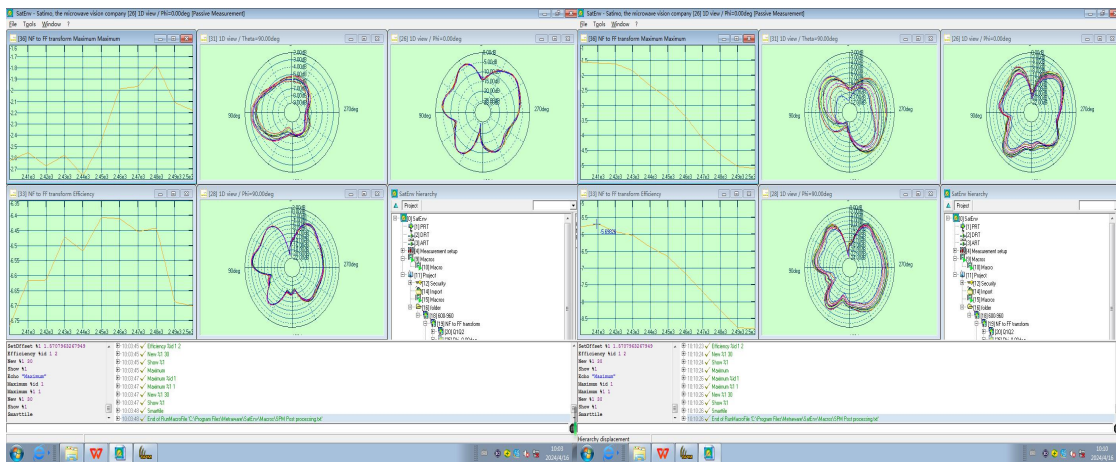
Confidential Information

2460	19.26%	-7.15	-3.36
2470	16.96%	-7.71	-4.11
2480	14.97%	-8.25	-4.63

2.3 Passive pattern

R

L



Theta=90 Phi=0° Phi=90°

3.Active test

3.1 TRP&TIS

FS-R

信道 CH	TRP (dBm)	TIS (dBm)
0	3.9	-88.14
39	4.25	-87.86
78	3.88	-87.22

HR

信道 CH	TRP (dBm)	TIS (dBm)
0	-0.91	-83.06
39	-0.21	-82.63
78	-0.52	-82.45

FS-L

信道	TRP	TIS

Confidentiality requirements

Strongpower Communication Co., Ltd. has the information provided by proprietary technology, which shall be kept strictly confidential and shall not be disclosed to any person or company without the prior written consent of Strongpower Communication Technology Co., Ltd.

Confidential Information

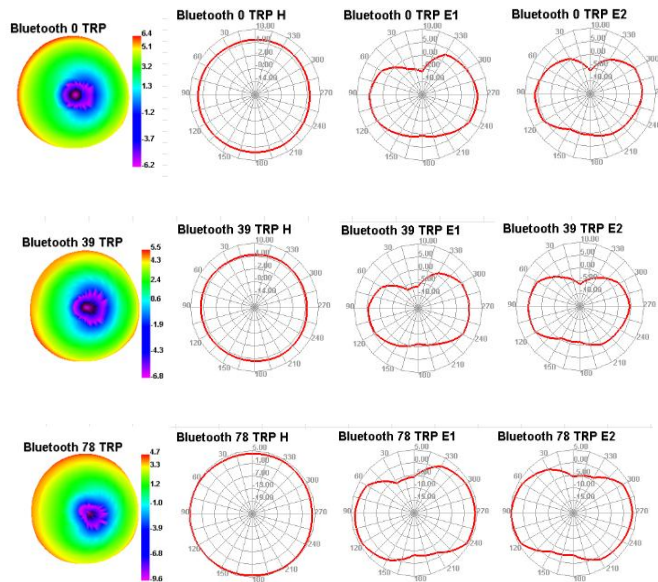
CH	(dBm)	(dBm)
0	4.15	-87.55
39	3.38	-87.8
78	3.69	-87.81

HL

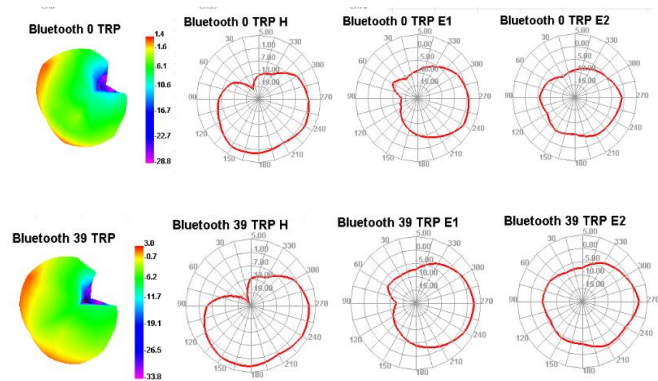
信道 CH	TRP (dBm)	TIS (dBm)
0	-1.72	-81.5
39	-0.21	-82.33
78	-0.44	-82.25

3.2 Active pattern
Left

FS-L

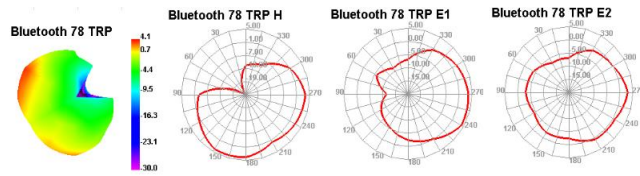


HL

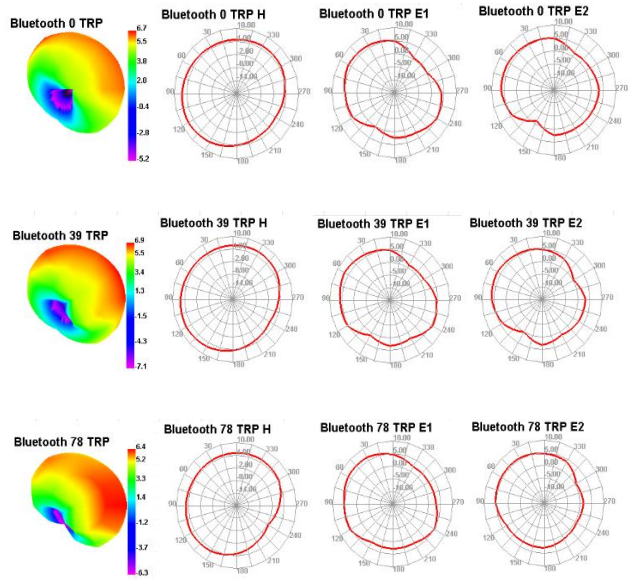


Confidentiality requirements

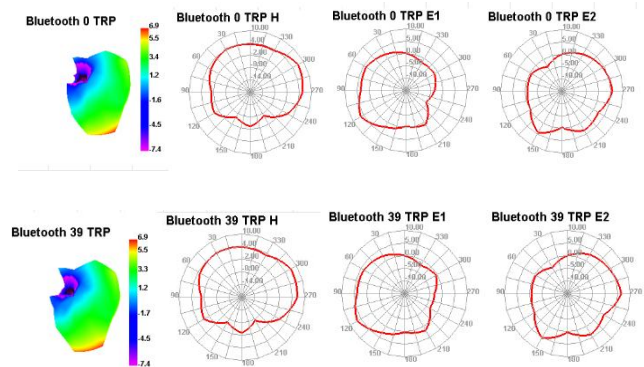
Strongpower Communication Co., Ltd. has the information provided by proprietary technology, which shall be kept strictly confidential and shall not be disclosed to any person or company without the prior written consent of Strongpower Communication Technology Co., Ltd.



FS-R

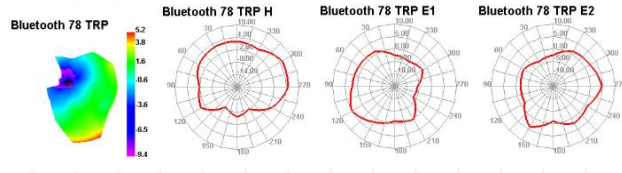


HR



Confidentiality requirements

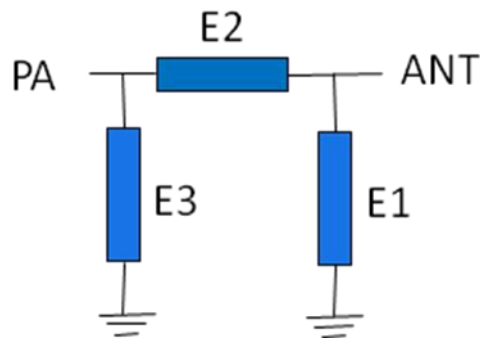
Strongpower Communication Co., Ltd. has the information provided by proprietary technology, which shall be kept strictly confidential and shall not be disclosed to any person or company without the prior written consent of Strongpower Communication Technology Co., Ltd.



4. Matching Circuit

Left&Right are the same

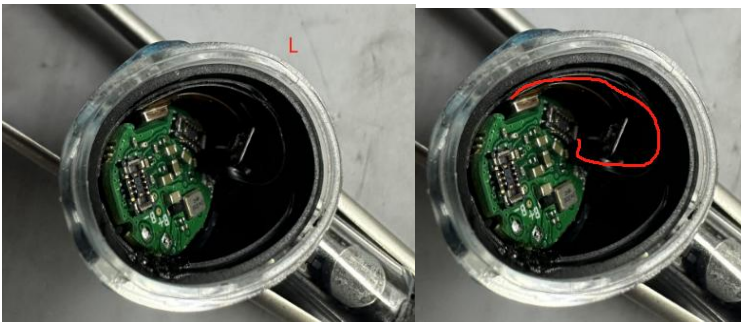
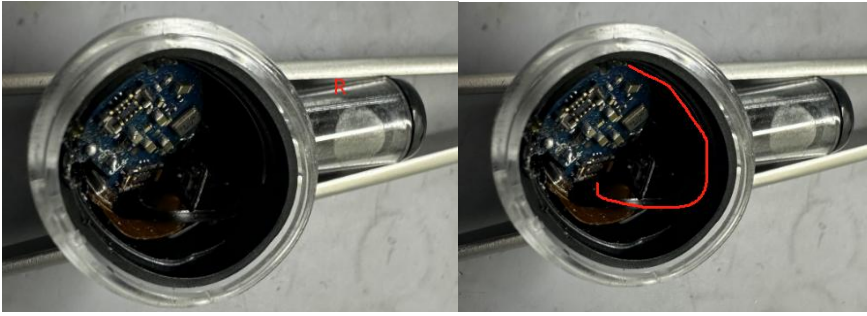
Element	E1	E2	E3
Value	ESD	0 Ω	3PF



Confidentiality requirements

Strongpower Communication Co., Ltd. has the information provided by proprietary technology, which shall be kept strictly confidential and shall not be disclosed to any person or company without the prior written consent of Strongpower Communication Technology Co., Ltd.

5. Environmental treatment



延长地金手指剪小到1MM

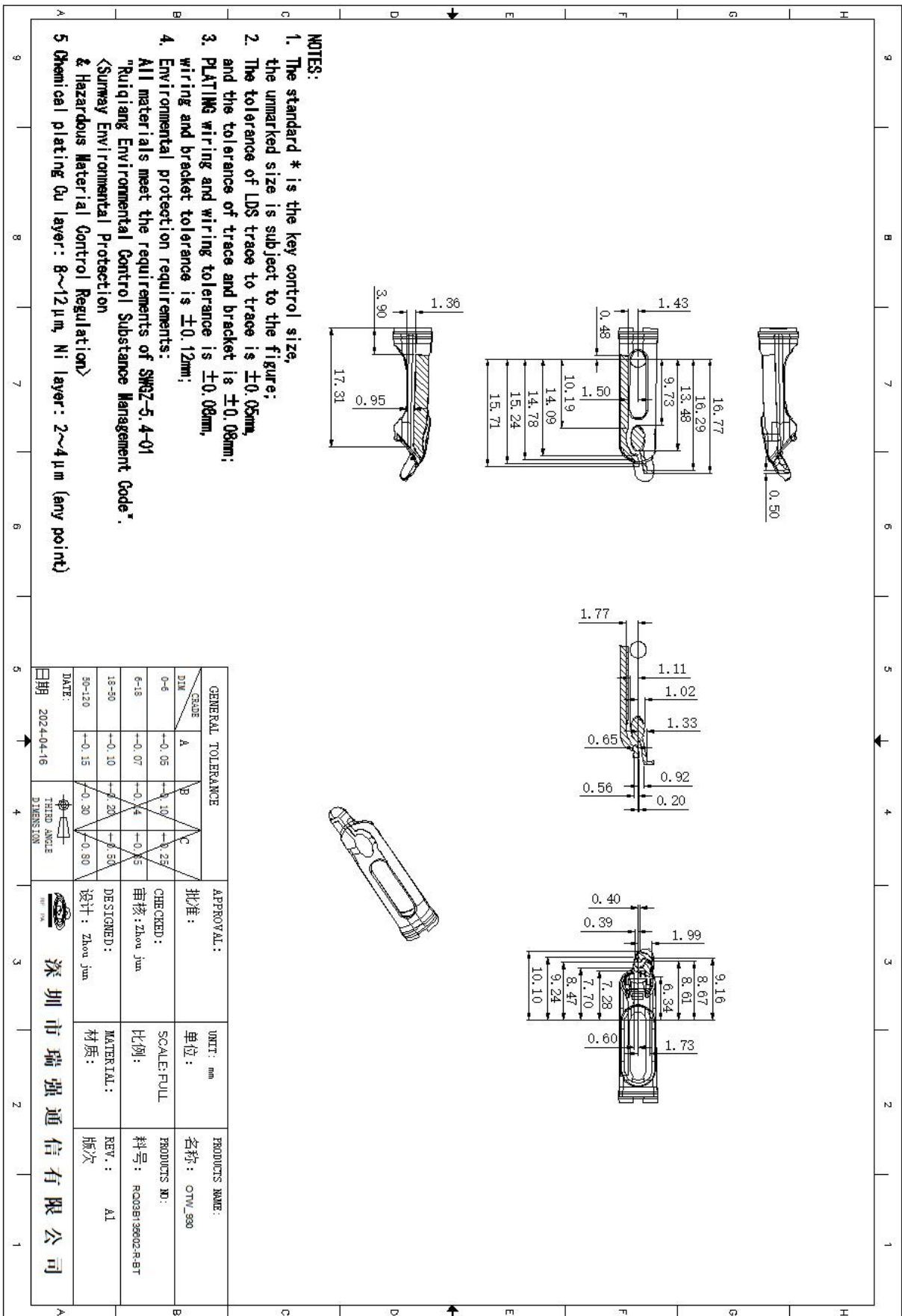


延长地总长为26MM



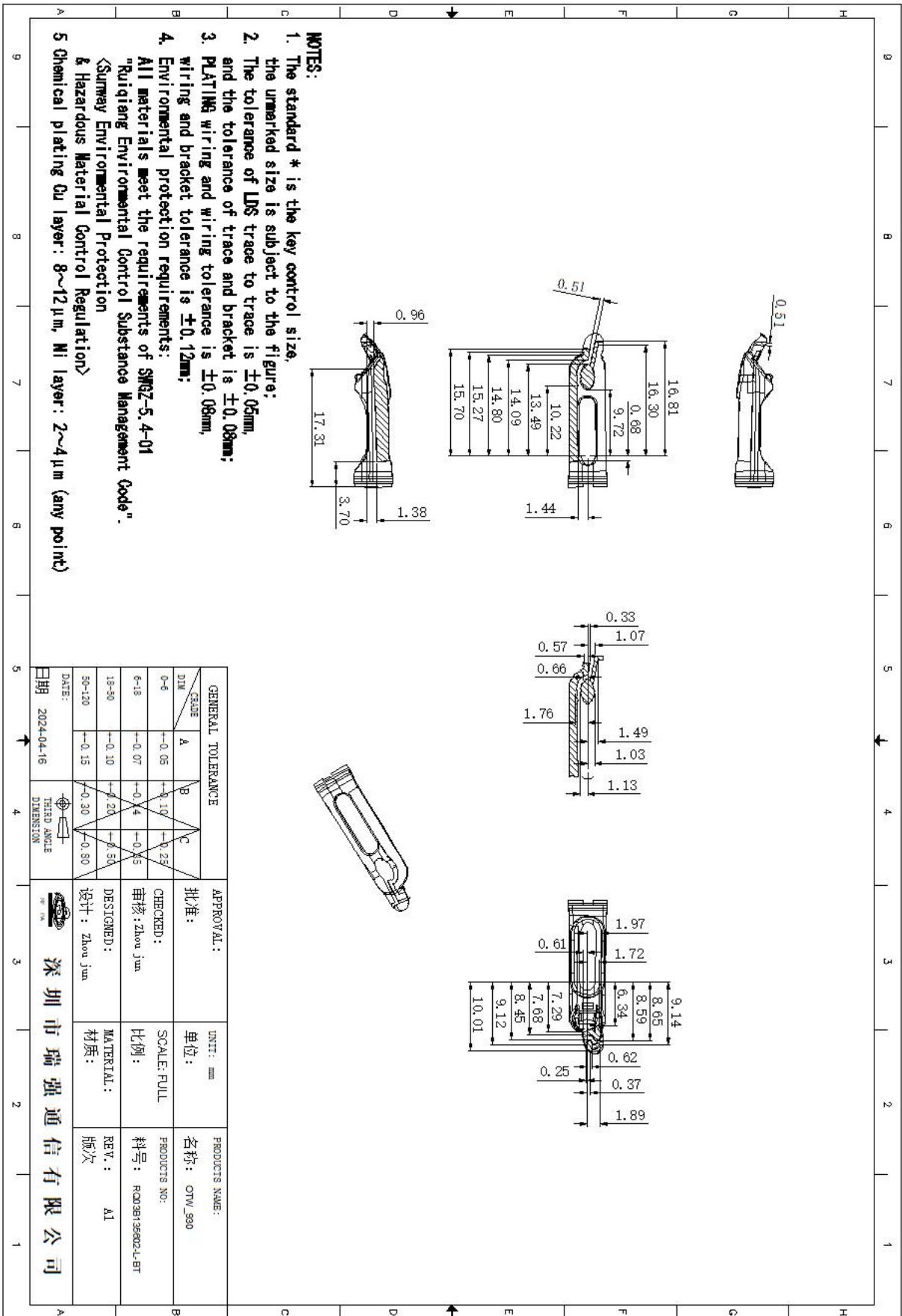
Confidentiality requirements

Strongpower Communication Co., Ltd. has the information provided by proprietary technology, which shall be kept strictly confidential and shall not be disclosed to any person or company without the prior written consent of Strongpower Communication Technology Co., Ltd.



Confidentiality requirements

Strongpower Communication Co., Ltd. has the information provided by proprietary technology, which shall be kept strictly confidential and shall not be disclosed to any person or company without the prior written consent of Strongpower Communication Technology Co., Ltd.



Confidentiality requirements

Strongpower Communication Co., Ltd. has the information provided by proprietary technology, which shall be kept strictly confidential and shall not be disclosed to any person or company without the prior written consent of Strongpower Communication Technology Co., Ltd.