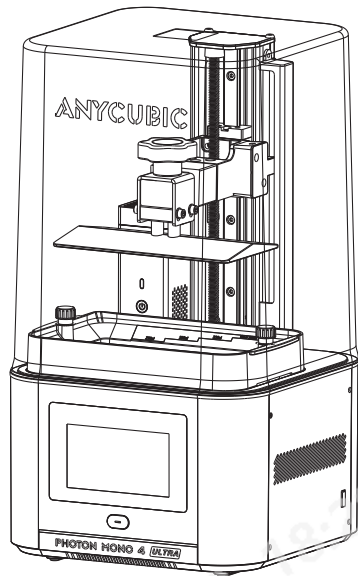




Photon Mono 4 Ultra

Installation and Usage Instructions



Content

01 Introduction 1

02 Preparations 3

Initialization 3

Leveling 5

Exposure Test 6

Accessories Installation 7

Resin Preparation 8

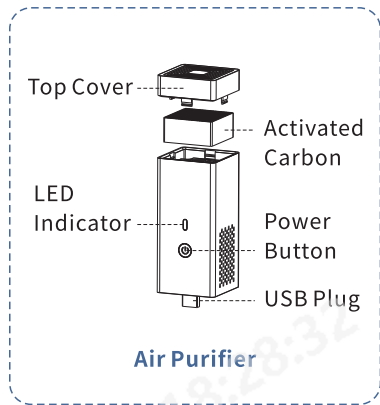
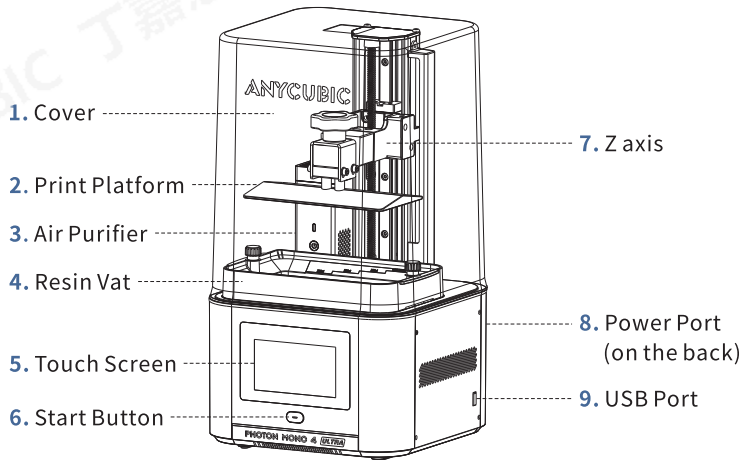
03 Start Printing 9

04 Resin Recycling 11

05 Attention 12

01 Introduction

Overview



In the Box



Photon Mono
4 Ultra



Print
Platform*1



Resin Vat*1



Manual*1



Leveling Paper



Screen
Protector Kit



Air Purifier*1



Protective
Equipment



Funnels*5



Scrapers*2



Hex Key Set



USB Drive*1



Power Cord
Power Adaptor

Product Parameters

Technical Specifications

LCD screen	6.94-inch 10K
Light source	COB light
XY Resolution	9024*5120
Leveling Method	Four Points Leveling
Touch Screen	4.3-inch Resistive Screen

Physical Dimensions

Product Dimension	231 mm(L) * 236 mm(W) * 430 mm (H)
Build Volume	154.22 mm(L) * 87.04 mm(W) * 165 mm(H)
Weight	5 kg

WiFi

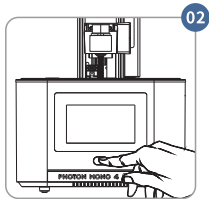
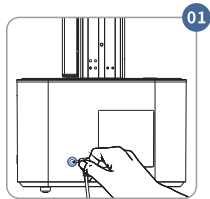
Frequency Range	2.4 G (2.400~2.4835 GHz)
Work Mode	AP, STA, AP+STA mode

02 Preparations

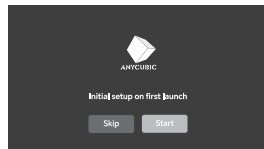
For the first use, please follow the instruction to finish the preparations. Please place the 3D printer on a stable, level workbench and operate it in an open, well ventilated area away from sunlight.

Initialization

1. Unbox, and take out the machine and its accessories. Then, connect to the power adapter and hold down the start button for 2 seconds to turn on the machine.

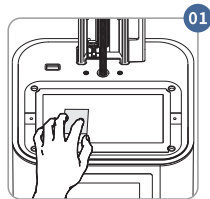


2. Set the system language and choose server location. Users in mainland Chinese select "China", users in other countries and regions select "Global". Then, complete the on-screen setup steps.

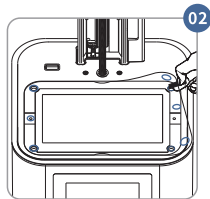


Click "Start" to start the cloud connection

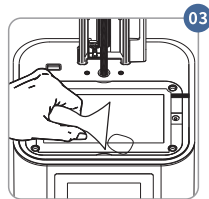
3. Install the screen protector.



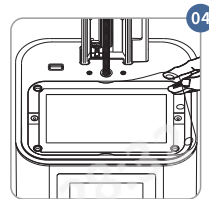
Peel off the protective film and clean the LCD screen



Peel off the film ①, then align with the locating holes to stick the screen protector

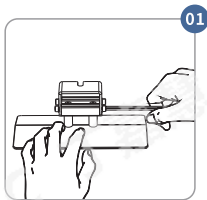


Squeeze out the air bubbles

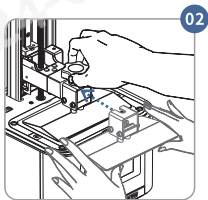


Peel off the film ②

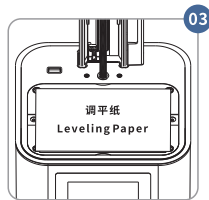
Leveling



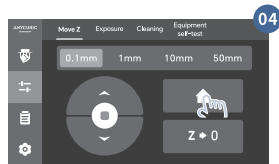
Loosen the four screws on the print platform



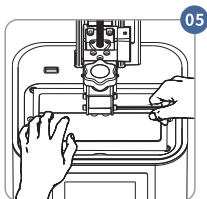
Push the platform onto the platform carrier, then tighten the knob



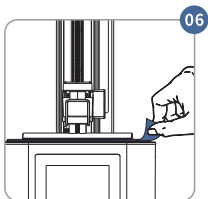
Place the leveling paper on the LCD screen



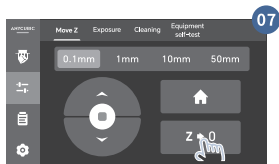
Click "HOME"



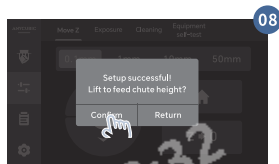
Press the platform gently, tighten the four screws



When pulling the leveling paper, there is a significant resistance or it cannot be pulled out

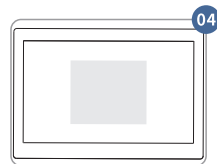
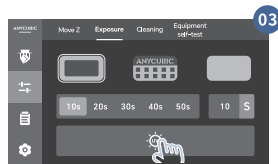
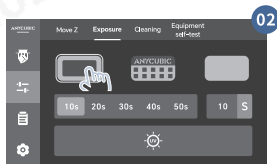
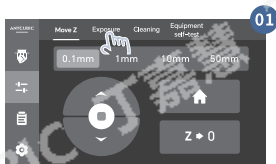


Set the zero position



Exposure Test

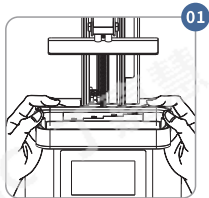
Choose an exposure image to test after the platform stops moving.



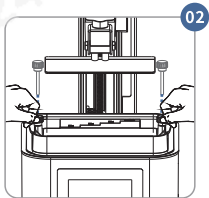
The white part is the exposure area

Accessories Installation

1. Install the resin vat.

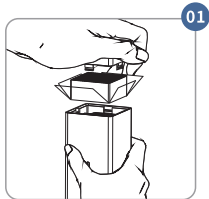


Put the resin vat with its feet stuck in locating holes

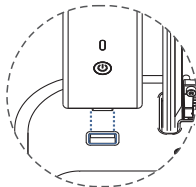


Tighten the two knobs

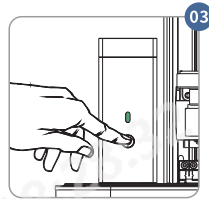
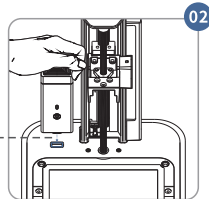
2. Use the air purifier.



Remove the package of carbon



Insert the USB port on the upper left side of the 3D printer

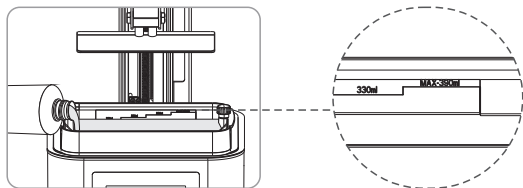


Press the button to start and green light is on

Resin Preparation

It is suggested to wear gloves and a mask for subsequent operations, as the contact with resin or the smell of the resin may cause your discomfort.

1. **Check the release film.** If the film is broken, replace it immediately to avoid further damage to the 3D printer.
2. **Slowly pour the resin into the vat and make sure the resin is within the vat's maximum scale.**



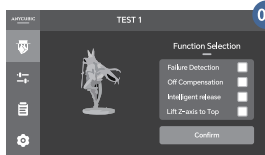
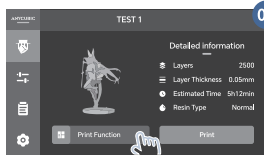
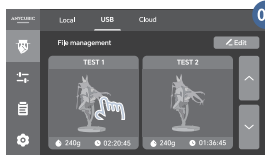
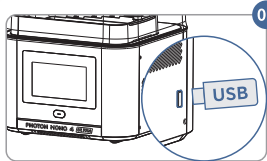
3. **Put on the cover.**

03 Start Printing

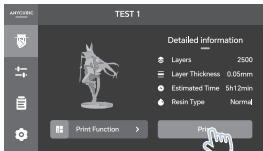
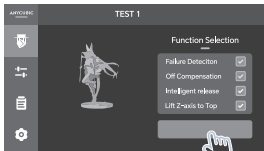
• Print USB drive file

The included USB drive provides normal, fast and high speed mode slice files that can be used for print test. The R_E_R_F file is to find out the optimal exposure parameters for different resins. For more instructions, please refer to the user manual on the USB drive.

1. Insert the USB drive to the right USB port. Then, select a file to print and set the print functions.



2. When the setting is finished, start the printing.

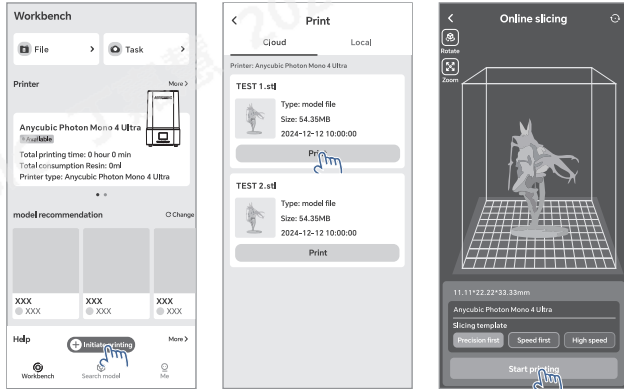


Attention:

High speed mode(sliced file) requires high speed resin! Otherwise, the print may fail.

• Start printing from Anycubic App

Follow the initial setup steps to connect to the cloud, and then initiate printing from Anycubic App.



• Start printing from Anycubic Workshop

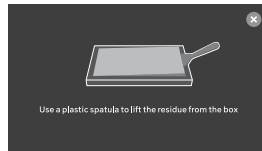
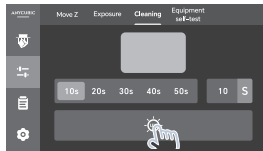
Run the installer in the USB drive to install Anycubic Workshop slicing software. Then, log in and bind your printer. Once connected to the cloud, you can start printing from the software.

For details, refer to the instructions of Anycubic Workshop in the USB drive.

04 Resin Recycling

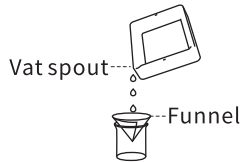
When the printing is finished, please process and recycle the resin in time.

1. Enable the vat cleaning function when the resin is partially cured to avoid the damage to the LCD screen and the printer.



Remove resin sheet by plastic scraper

2. If there is any remaining resin, please pour it out through a vat spout and filter it with a funnel.



3. If you do not use the 3D printer for a long time, please clean the resin vat timely and store the resin in an airtight container away from light.

05 Attention

- 1. It is recommended that use the USB drive we provide. If you are using your own USB drive, please ensure that it is formatted to FAT/FAT 32 and has a memory size of less than 64G.
To ensure proper file reading, please put print files in the root directory of USB drive.**
- 2. In case of emergency, please immediately cut off the power of 3D printer and then contact our technical support.**
- 3. UV light is harmful to the eyes; please avoid direct contact. When operating, wear protective equipment such as anti-UV goggles and gloves.**
- 4. Be cautious when using the scraper, and make sure to orient the sharp parts of printer and tools away from people.**
- 5. Keep Anycubic 3D printer and its accessories out of the reach of children.**
- 6. Do not expose Anycubic 3D printer to water or rain.**
- 7. Do not disassemble Anycubic 3D printer, please contact technical support if you have any questions.**

Radio interference

WARNING: This device complies with Part 15 of the FCC Rules. Operation is subject to the following two conditions: (1) This device may not cause harmful interference, and (2) this device must accept any interference received, including interference that may cause undesired operation.

CAUTION: Changes or modifications not expressly approved by the party responsible for compliance could void the user's authority to operate the equipment.

NOTE: This equipment has been tested and found to comply with the limits for a Class B digital device, pursuant to Part 15 of the FCC Rules. These limits are designed to provide reasonable protection against harmful interference in a residential installation. This equipment generates, uses, and can radiate radio frequency energy. If not installed and used in accordance with the instructions, it may cause harmful interference to radio communications. However, there is no guarantee that interference will not occur in a particular installation. If this equipment does cause harmful interference to radio or television reception, which can be determined by turning the equipment off and on, the user is encouraged to try to correct the interference by one more of the following measures:

- Reorient or relocate the receiving antenna.
- Increase the distance between the equipment and receiver.
- Connect the equipment to an outlet on a circuit different from that to which the receiver is connected.
- Consult the dealer or an experienced radio/TV technician for help.

To maintain compliance with FCC's RF Exposure guidelines. This equipment should be installed and operated with minimum distance between 20cm the radiator your body: Use only the supplied antenna.



Name: APEX CE SPECIALISTS LIMITED
Add: 89 Princess Street, Manchester, M1 4HT, UK
Contact: Wells
Tel: + 441616371080
E-mail: info@apex-ce.com



Name: Apex CE Specialists GmbH
Add: Habichtweg 1 41468 Neuss Germany
Contact: Wells Yan
Tel: +353212066339
E-mail: info@apex-ce.com

Thank you for purchasing Anycubic products! For detailed user manual and software installation, please refer to user manual from the USB drive or visit www.anycubic.com and download. If you need any help, please contact technical support at support.anycubic.com/en.



214-240359

FCC-ID:2AXYK-MONO4ULTRA
CMIIT ID:24J44VY80436



M02010074